

REVISED: 5/13/10 - RLOWE  
 PLOTTED BY: RLOWE ON 5/14/2010  
 PLOT STYLE: 11x17.ctb  
 PLOT SCALE: 1:1.01  
 H:\Projects\Addison\2002102\PHASE1\Sheet\Sheet-As-Built\2002102c36\_SISew.dwg

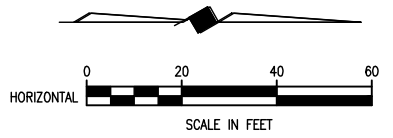
**WARNING POWER**  
 ONCOR ELECTRICAL CONDUIT  
 CALL 1-800-DIG-TESS  
 72 HOURS PRIOR TO  
 EXCAVATION IN VICINITY  
 OF PROJECT

**WARNING**  
 ONCOR GAS LINE  
 CALL 1-800-DIG-TESS  
 72 HOURS PRIOR TO  
 EXCAVATION IN VICINITY  
 OF PROJECT

**WARNING TELEVISION BURIED CABLE**  
 CALL 1-800-DIG-TESS  
 72 HOURS PRIOR TO  
 EXCAVATION IN VICINITY  
 OF PROJECT

**WARNING S.W. BELL BURIED TELEPHONE CABLE**  
 CALL 1-800-DIG-TESS  
 72 HOURS PRIOR TO  
 EXCAVATION IN VICINITY  
 OF PROJECT

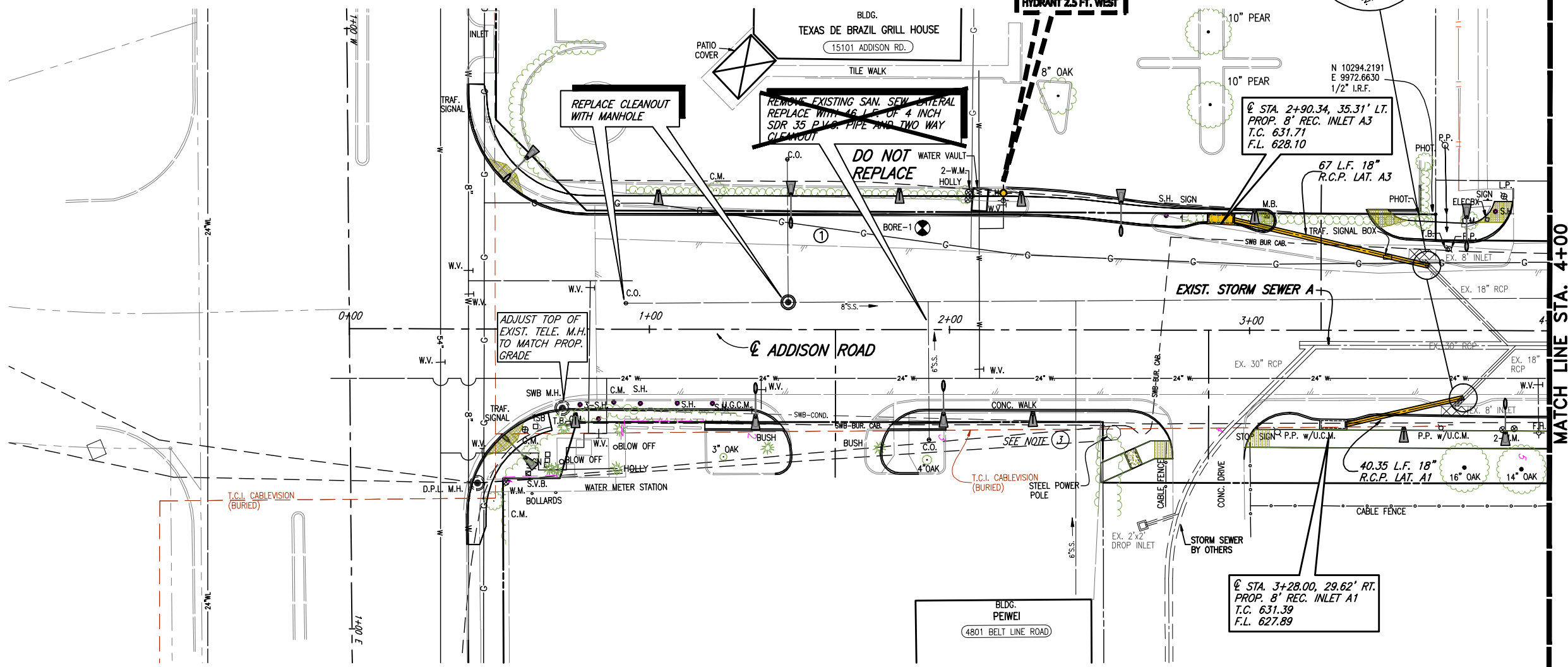
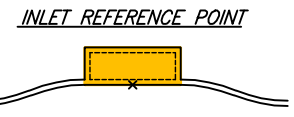
**CALL US BEFORE YOU DIG**



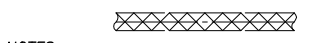
B.M.#19 "□" CUT IN CENTER OF INLET 150 FEET SOUTH OF BELT LINE RD., EAST OF INWOOD RD. ELEV. 630.59

T.B.M. AR-1 "□" CUT IN TOP OF VAULT NORTHEAST CORNER OF ADDISON RD. AND BELT LINE RD. ELEV. 634.80

T.B.M. AR-2 "□" CUT IN CENTER OF INLET EAST SIDE OF ADDISON RD., @ STA. 9+87, 52 FEET RT. ELEV. 628.79

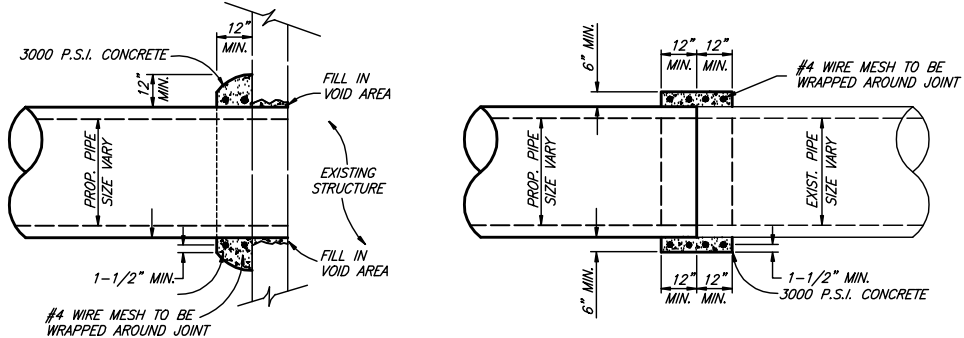


**EXISTING STORM SEWER PIPE REMOVAL**



- NOTES:
- CONNECTING TO EXISTING STORM SEWER & REMOVAL OF EXISTING STORM SEWER PIPE, INLETS AND OTHER APPURTENANCES IS SUBSIDIARY TO PROPOSED STORM SEWER SYSTEM INSTALLATION.
  - USED 1978 ADDISON ROAD AND KELLER SPRINGS CONSTRUCTION PLANS TO SHOW APPROXIMATE LOCATION AND DEPTH OF EXISTING STORM SEWER SHOWN IN THE PLANS, ALONG WITH LOCATING AND MEASURING THE DEPTH OF EXISTING STORM SEWER STRUCTURES.
  - POSITIVE FLOW FROM EXIST. FLUME SHALL BE MAINTAINED.

These plans and related specifications were prepared for construction of this specific project only. Reuse of these documents is not permitted without written authorization of Birkhoff, Hendricks, & Conway, L.L.P.



**DETAIL OF PIPE CONNECTION W/ EXISTING PIPE OR STRUCTURE**

INSIDE JOINT SHALL BE CONCRETE MORTAR IF PIPE SIZES ARE DIFFERENT

This record drawing is a compilation of the sealed engineering drawing for this project; modified by addenda, change orders and information furnished by the contractor. The information shown on the record drawings that was provided by the contractor or others not associated with the design engineer cannot be verified for accuracy or completeness. This original sealed drawings are on file at the offices of Birkhoff, Hendricks & Carter, L.L.P.  
 BY J.W.B. DATE 05/04/2010

THESE DOCUMENTS ARE FOR BIDDING, CONSTRUCTION, AND PERMIT PURPOSES.  
 DATE: 3/22/07



**TOWN OF ADDISON, TEXAS**

**ADDISON ROAD IMPROVEMENTS**  
 BELT LINE ROAD TO ARAPAHO ROAD PHASE I  
 STORM SEWER PLAN - STA. 0+00 TO STA. 4+00

**BIRKHOFF, HENDRICKS & CONWAY L. L. P.**  
 CONSULTING ENGINEERS  
 Dallas, Texas

DESIGNED BY: J.W.B. PROJECT: 2002 102 SHEET NO. 36  
 DRAWN BY: R.J.L. DATE: SEPTEMBER 2006 OF 68 SHEETS

① FIELD CHANGE NO. 1 MARCH 22, 2007