

REVISED: 5/13/10 - RLOWE PLOTTED BY: RLOWE ON 5/14/2010 PLOT STYLE: 1:1x17.ctb

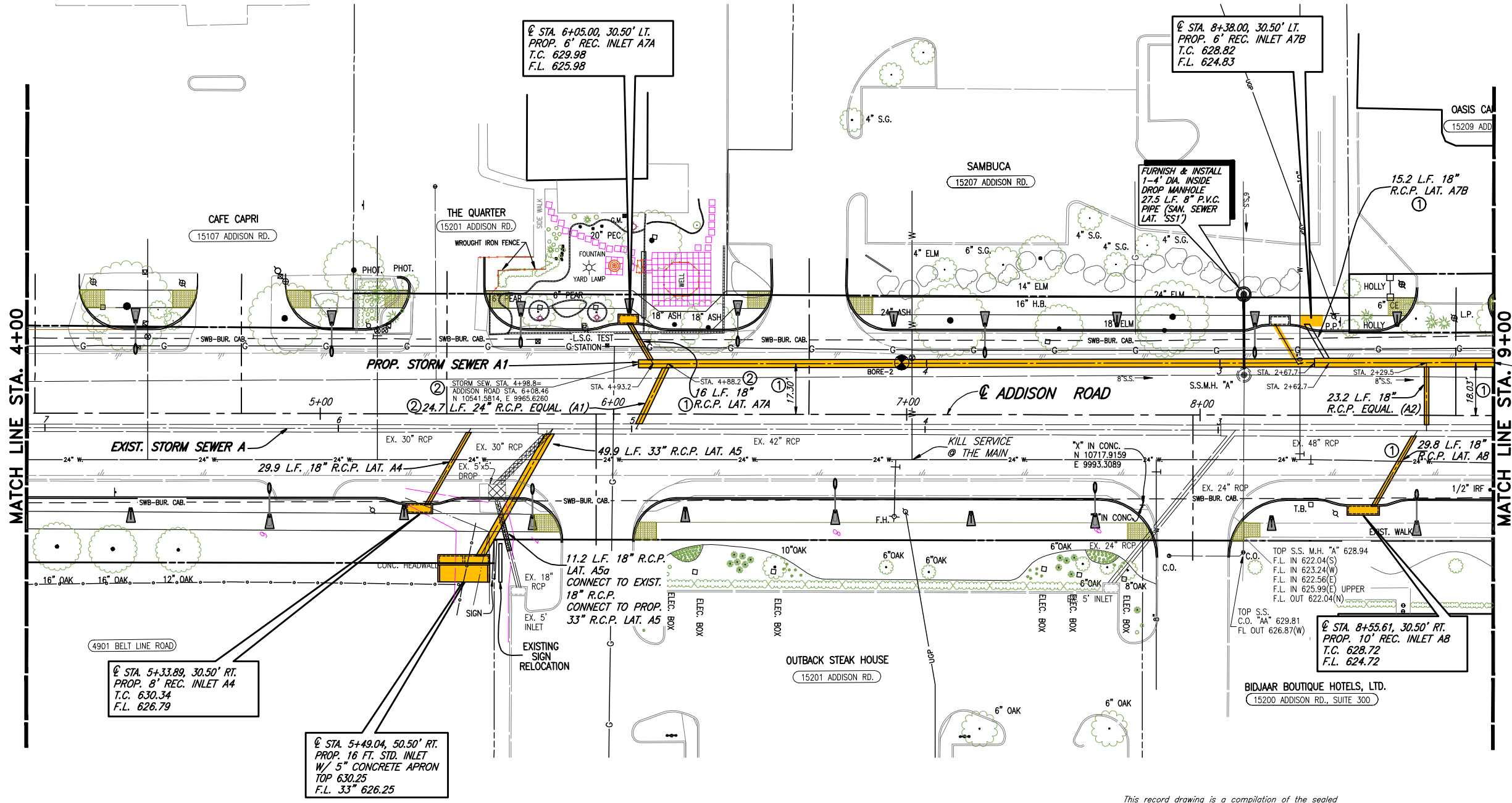
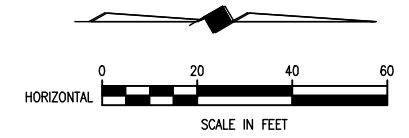
WARNING POWER
ONCOR ELECTRICAL CONDUIT
CALL 1-800-DIG-TESS
72 HOURS PRIOR TO
EXCAVATION IN VICINITY
OF PROJECT

WARNING TELEVISION
ONCOR GAS LINE
CALL 1-800-DIG-TESS
72 HOURS PRIOR TO
EXCAVATION IN VICINITY
OF PROJECT

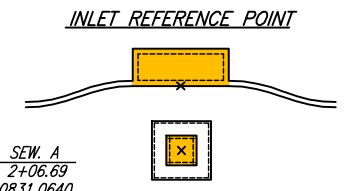
WARNING BURIED CABLE
S.W. BELL BURIED
TELEPHONE CABLE
CALL 1-800-DIG-TESS
72 HOURS PRIOR TO
EXCAVATION IN VICINITY
OF PROJECT

WARNING S.W. BELL BURIED TELEPHONE CABLE
CALL 1-800-DIG-TESS
72 HOURS PRIOR TO
EXCAVATION IN VICINITY
OF PROJECT

1-800-DIG-TESS
CALL US BEFORE YOU DIG



B.M.#19 "□" CUT IN CENTER OF INLET 150 FEET SOUTH OF BELT LINE RD., EAST OF INWOOD RD. ELEV. 630.59
T.B.M. AR-1 "□" CUT IN TOP OF VAULT NORTHEAST CORNER OF ADDISON RD. AND BELT LINE RD. ELEV. 634.80
T.B.M. AR-2 "□" CUT IN CENTER OF INLET EAST SIDE OF ADDISON RD., @ STA. 9+87, 52 FEET RT. ELEV. 628.79



STM. SEW. A
STA. 2+06.69
N 10831.0640
E 9931.0274

EXISTING STORM SEWER PIPE REMOVAL
XXXXXXXXXX

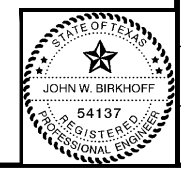
- NOTES:
- CONNECTING TO EXISTING STORM SEWER & REMOVAL OF EXISTING STORM SEWER PIPE, INLETS AND OTHER APPURTENANCES IS SUBSIDIARY TO PROPOSED STORM SEWER SYSTEM INSTALLATION.
 - USED 1978 ADDISON ROAD AND KELLER SPRINGS CONSTRUCTION PLANS TO SHOW APPROXIMATE LOCATION AND DEPTH OF EXISTING STORM SEWER SHOWN IN THE PLANS, ALONG WITH LOCATING AND MEASURING THE DEPTH OF EXISTING STORM SEWER STRUCTURES.

This record drawing is a compilation of the sealed engineering drawing for this project; modified by addenda, change orders and information furnished by the contractor. The information shown on the record drawings that was provided by the contractor or others not associated with the design engineer cannot be verified for accuracy or completeness. This original sealed drawings are on file at the offices of Birkhoff, Hendricks & Carter, L.L.P.
BY J.W.B. DATE 05/04/2010

These plans and related specifications were prepared for construction of this specific project only. Reuse of these documents is not permitted without written authorization of Birkhoff, Hendricks, & Conway, L.L.P.

- ② FIELD CHANGE NO. 2 MARCH 27, 2007
-SHORTEN LINE A BY 20.2 FEET.
-SHIFT EQUALIZER LATERAL (A1) 25.6 FEET NORTH
- ① FIELD CHANGE NO. 1 MARCH 22, 2007

THESE DOCUMENTS ARE FOR BIDDING, CONSTRUCTION, AND PERMIT PURPOSES.
John W. Birkhoff
DATE: 3/27/07



TOWN OF ADDISON, TEXAS
ADDISON ROAD IMPROVEMENTS
BELT LINE ROAD TO ARAPAHO ROAD PHASE I
STORM SEWER PLAN - STA. 4+00 TO STA. 9+00
BIRKHOFF, HENDRICKS & CONWAY L. L. P.
CONSULTING ENGINEERS
Dallas, Texas

DESIGNED BY: J.W.B.	PROJECT: 2002 102	SHEET NO. 37
DRAWN BY: R.J.L.	DATE: SEPTEMBER 2006	OF 68 SHEETS