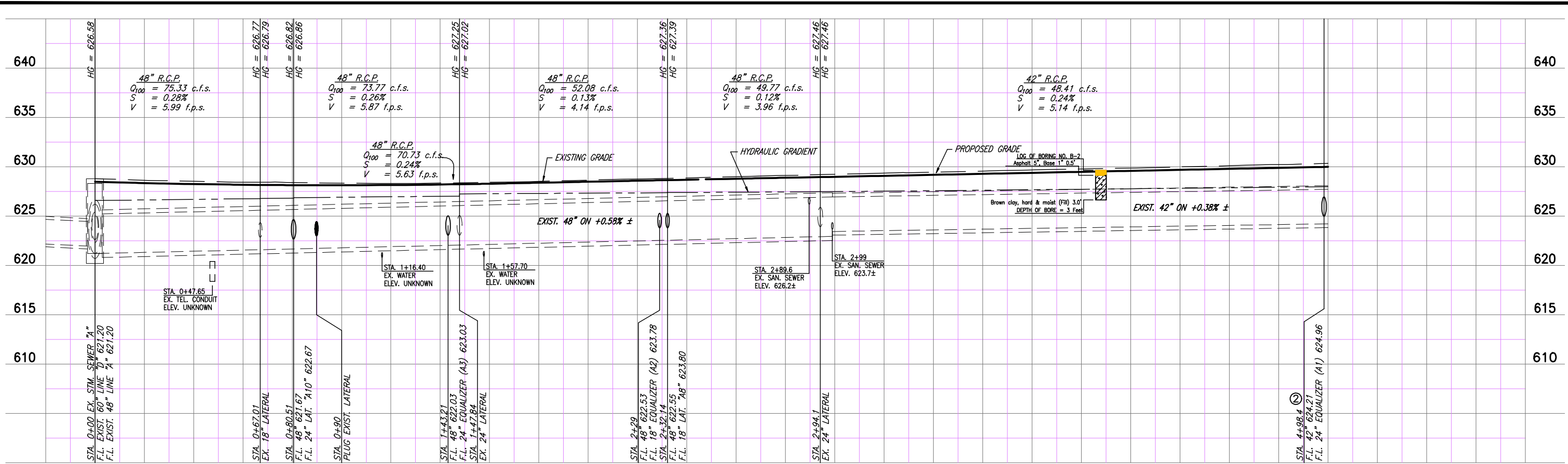


11/17/2010

1:1.0101

H:\Projects\Addison\2002102\PHASE1\Sheets-As-Built\2002102C40_SISewer.dwg

REVISD: 5/6/10 - RLOWE



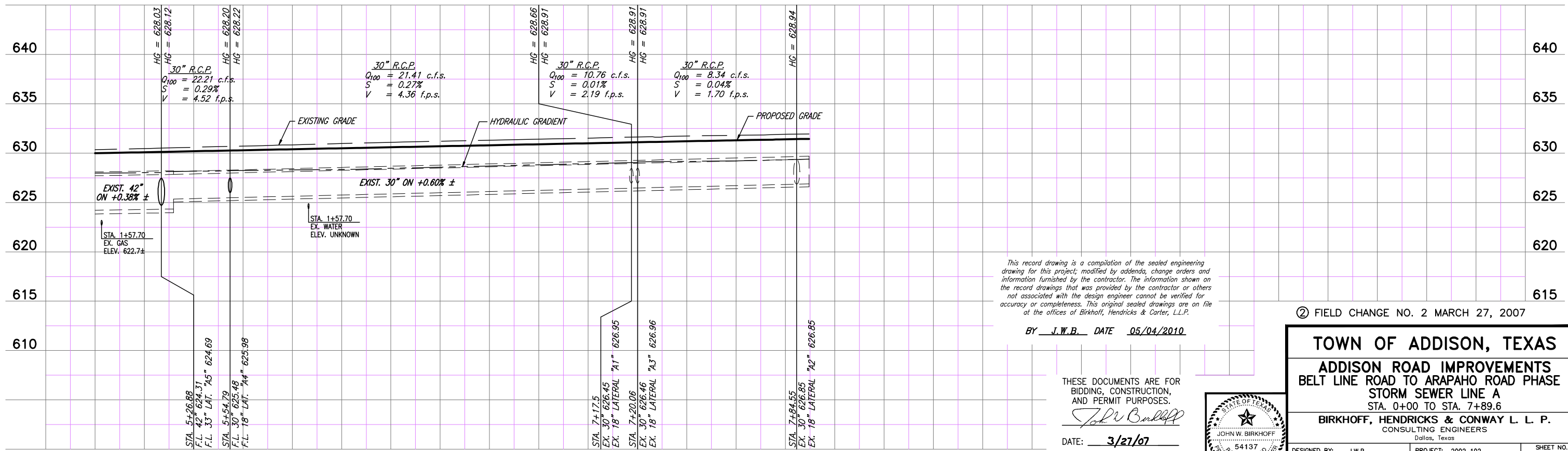
EXISTING STORM SEWER LINE A ②

B.M.#19 "□" CUT IN CENTER OF INLET 150 FEET SOUTH OF BELT LINE RD., EAST OF INWOOD RD. ELEV. 630.59

T.B.M. AR-1 "□" CUT IN TOP OF VAULT NORTHEAST CORNER OF ADDISON RD. AND BELT LINE RD. ELEV. 634.80

T.B.M. AR-2 "□" CUT IN CENTER OF INLET EAST SIDE OF ADDISON RD., & STA. 9+87, 52 FEET RT. ELEV. 628.79

These plans and related specifications were prepared for construction of this specific project only. Reuse of these documents is not permitted without written authorization of Birkhoff, Hendricks, & Conway, L.L.P.



EXISTING STORM SEWER LINE A ⑧

This record drawing is a compilation of the sealed engineering drawing for this project, modified by addenda, change orders and information furnished by the contractor. The information shown on the record drawings that was provided by the contractor or others not associated with the design engineer cannot be verified for accuracy or completeness. This original sealed drawings are on file at the offices of Birkhoff, Hendricks & Carter, L.L.P.

BY J.W.B. DATE 05/04/2010

THESE DOCUMENTS ARE FOR BIDDING, CONSTRUCTION, AND PERMIT PURPOSES.

DATE: 3/27/07

② FIELD CHANGE NO. 2 MARCH 27, 2007



TOWN OF ADDISON, TEXAS
ADDISON ROAD IMPROVEMENTS
BELT LINE ROAD TO ARAPAHO ROAD PHASE I
STORM SEWER LINE A
 STA. 0+00 TO STA. 7+89.6

BIRKHOFF, HENDRICKS & CONWAY L. L. P.
 CONSULTING ENGINEERS
 Dallas, Texas

DESIGNED BY: J.W.B. PROJECT: 2002 102 SHEET NO. 40
 DRAWN BY: R.J.L. DATE: SEPTEMBER 2006 OF 68 SHEETS