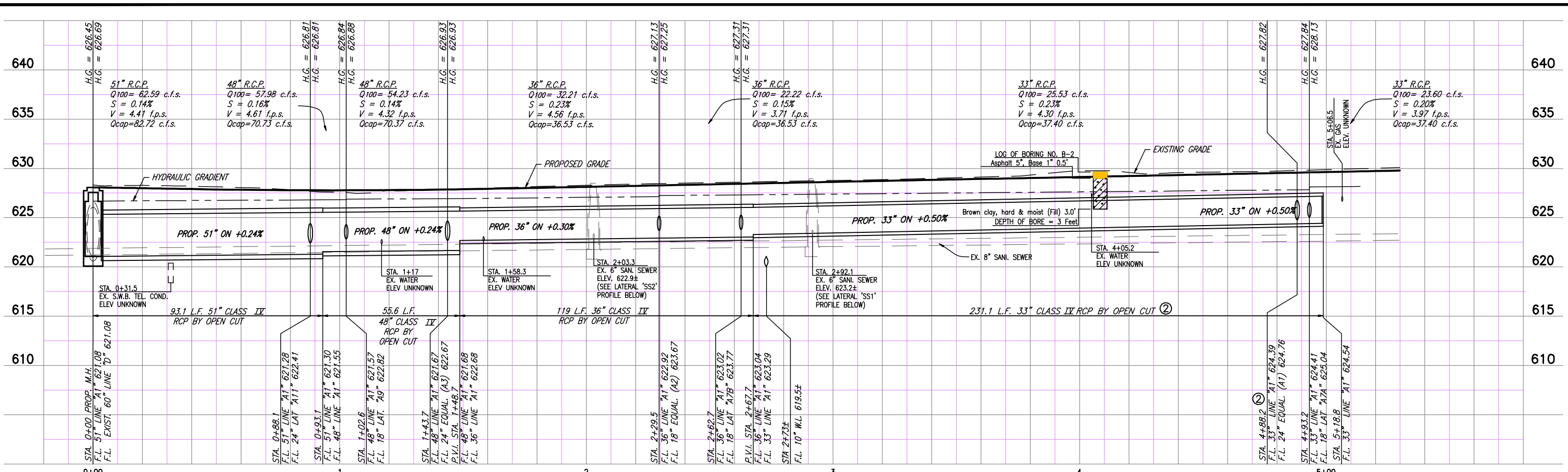


REVISION: 5/6/10 - RLOWE
 PLOTTED BY: RLOWE ON 5/14/2010
 PLOT STYLE: 11x17.ctb
 PLOT SCALE: 1:1,010
 H:\Projects\Addison\2002\102\PHASE1\SSHEETS-As-Built\2002\102041_SISew.dwg
 SHEET: 02041

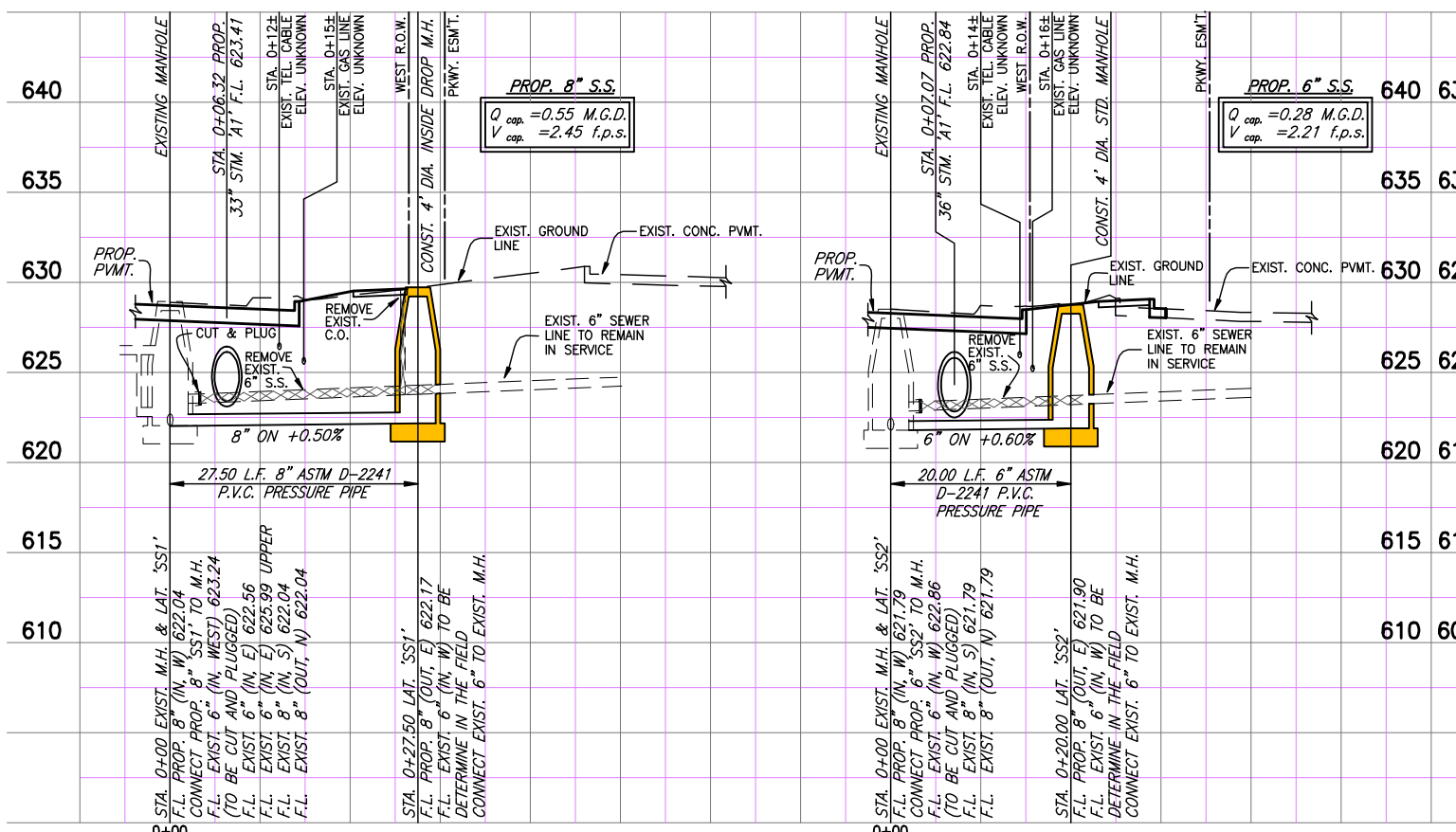


PROPOSED STORM SEWER LINE A1 ①②

SCALE: 1" = 20' HORIZ.
1" = 5' VERT.

T.B.M. AR-1 "□" CUT IN TOP OF VAULT NORTHEAST CORNER OF ADDISON RD. AND BELT LINE RD. ELEV. 634.80
 T.B.M. AR-2 "□" CUT IN CENTER OF INLET EAST SIDE OF ADDISON RD., @ STA. 9+87, 52 FEET RT. ELEV. 628.79

These plans and related specifications were prepared for construction of this specific project only. Reuse of these documents is not permitted without written authorization of Birkhoff, Hendricks, & Conway, L.L.P.

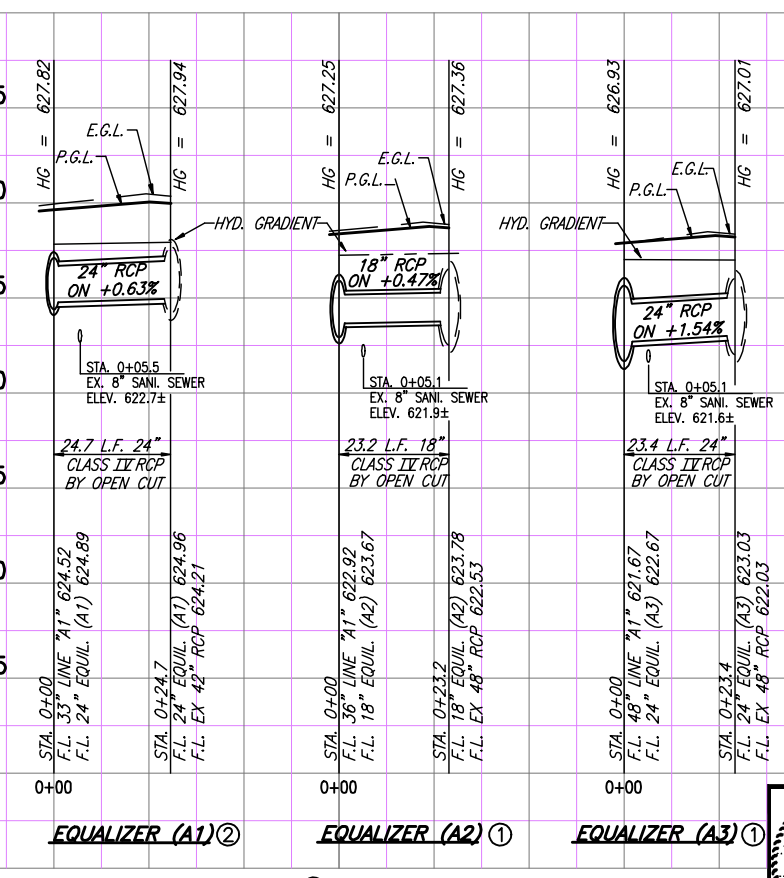


8" SANITARY SEWER LATERAL 'SS1' ①

6" SANITARY SEWER LATERAL 'SS2' ①

SCALE: 1" = 10' HORIZ.
1" = 5' VERT.

SCALE: 1" = 10' HORIZ.
1" = 5' VERT.



EQUALIZER (A1) ②

EQUALIZER (A2) ①

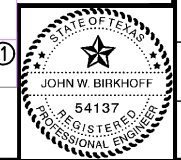
EQUALIZER (A3) ①

② FIELD CHANGE NO. 2 MARCH 27, 2007
 ① FIELD CHANGE NO. 1 MARCH 22, 2007

This record drawing is a compilation of the sealed engineering drawing for this project; modified by addenda, change orders and information furnished by the contractor. The information shown on the record drawings that was provided by the contractor or others not associated with the design engineer cannot be verified for accuracy or completeness. This original sealed drawings are on file at the offices of Birkhoff, Hendricks & Carter, L.L.P.

BY J.W.B. DATE 05/04/2010

THESE DOCUMENTS ARE FOR BIDDING, CONSTRUCTION, AND PERMIT PURPOSES.
John W. Birkhoff
 DATE: 3/27/07



TOWN OF ADDISON, TEXAS

**ADDISON ROAD IMPROVEMENTS
 BELT LINE ROAD TO ARAPAHO ROAD PHASE I
 STORM SEWER LINE A1/SAN. SEW. 'SS1' & 'SS2'
 STA. 0+00 TO STA. 5+17.75**

BIRKHOFF, HENDRICKS & CONWAY L. L. P.
 CONSULTING ENGINEERS
 Dallas, Texas

DESIGNED BY: J.W.B.	PROJECT: 2002 102	SHEET NO. 41
DRAWN BY: R.J.L.	DATE: MAY 2005	OF 68 SHEETS