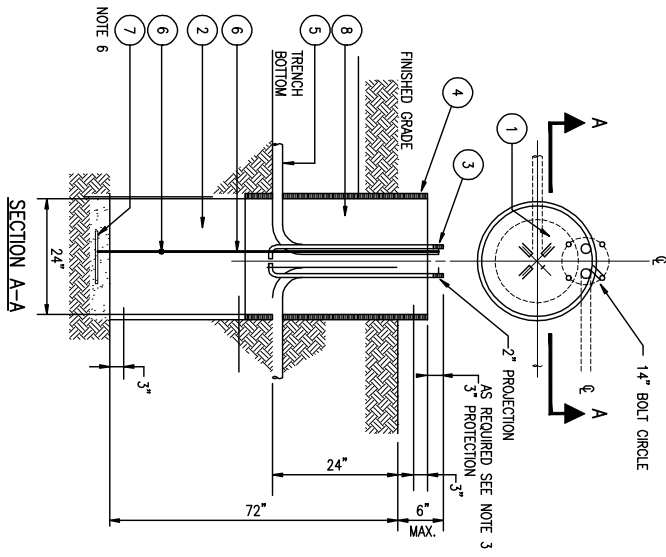


MODIFICATIONS TO ELECTRICAL SHEETS

Contractor shall implement these modifications to the Electrical Sheets and include such cost in the appropriate bid items.

- A. Sheet No. 63 (Drawing E-1): Roadway Lighting - Part "A"
 1. Add an additional Utility Service/Detail 2/E-5 for a total of two (2) Utility Services. One service will serve Roadway Lighting exclusively and the other service will serve Pedestrian and Irrigation Systems.
 2. Currently a single feeder containing 2 #10, #10G, 3/4" C, is shown from the single service to each pullbox/light fixture. Provide an additional feeder of 2 #10, #10G, 2" C, to also loop through each pull box. One circuit will serve Roadway Lighting exclusively while the other feeder will serve Pedestrian and Irrigation Systems.
 3. Change the conduit size to 2-inch.
- B. Sheet No. 64 (Drawing E-2): Roadway Lighting - Part "B"
 1. Currently a single feeder containing 2 #10, #10G, 3/4" C, is shown from the single service to each pullbox/light fixture. Provide an additional feeder of 2 #10, #10G, 2" C, to also loop through each pull box. One circuit will serve Roadway Lighting exclusively while the other feeder will serve Pedestrian and Irrigation Systems.
 2. Change the conduit size to 2-inch.
- C. Sheet No. 65 (Drawing E-3): Roadway Lighting - Part "C"
 1. Currently a single feeder containing 2 #10, #10G, 3/4" C, is shown from the single service to each pullbox/light fixture. Provide an additional feeder of 2 #10, #10G, 2" C, to also loop through each pull box. One circuit will serve Roadway Lighting exclusively while the other feeder will serve Pedestrian and Irrigation Systems.
 2. Change the conduit size to 2-inch.
- D. Sheet No. 66 (Drawing E-4): Roadway Lighting - Part "D"
 1. Add an additional Utility Service/Detail 2/E-5 for a total of two (2) Utility Services. One service will serve Roadway Lighting exclusively and the other service will serve Pedestrian and Irrigation Systems.
 2. Currently a single feeder containing 2 #10, #10G, 3/4" C, is shown from the single service to each pullbox/light fixture. Provide an additional feeder of 2 #10, #10G, 2" C, to also loop through each pull box. One circuit will serve Roadway Lighting exclusively while the other feeder will serve Pedestrian and Irrigation Systems.
 3. Change the conduit size to 2-inch.

- E. Sheet No. 66 (Drawing E-5): Details.
 1. Modify detail 3/E-5 height currently indicated for the pole as 38'-0" to 17'-0".
 2. Detail (3/E-5) Fixture SAA add the following:
 "For combination roadway/pedestrian type SA fixture, the light fixture and obstruction light will both be served from the pedestrian lighting circuit and be controlled by the obstruction light photo cell."
- F. Sheet No. 67 (Drawing E-6):
 1. The roadway light fixture SA will be served from the roadway lighting circuit and be controlled by the photo cell mounted on top of the roadway fixture.
 2. Add the description "photo cell" to the leader line on the detail for fixture SB to control the fixture.
- G. Sheet No. 68 (Drawing E-7): Schedules
 1. Modify Light Fixture Schedule note 4. Note should read "Similar to "SA" except 17-foot maximum height pole".
 2. Add the following:
 "The poles shall be steel and the color of the top coats shall be selected by the Town of Addison. The manufacturer of the fixtures is Lumec-Schneider of Canada, local representative, 214-658-9000."
- H. Locations of light standards shown on Electrical Sheets are shown schematically. Place light standards to locations as shown on coordinate layout plans, make field adjustment as required and approved by the Town.



ITEM	DESCRIPTION
1	#3 REBAR, 18 IN. DIA. HOOP, 3 IN. OVERLAP
2	#5 REBAR, STRAIGHT, 60 IN. LONG, 3" COVER
3	ANCHOR BOLT, GALV, 1" W/25" & 30" POLES & 1/4" W/40" POLES
4	CONCRETE FOUNDATION TUBE, 24 IN. DIA.
5	CONDUIT, PVC OR PEC (NOT IN FOUNDATION ANN)
6	WIRE, #5 COPPER, SOLID (SEE NOTE 6)
7	GROUND, POLE BOLT WIRE COIL (SEE NOTE 6)
8	CONCRETE (SEE NOTE 1)

STREET LIGHT BASE

- NOTE:
1. CONCRETE TO BE MIN. 3000 PSI AT 28 DAYS, (5 SACK) MAX. TOP OF FOUNDATION TO BE TROWELED TO A FLAT AND LEVEL SURFACE. AVOID EXCESSIVE TROWELING. CONCRETE TO SET A MIN. OF 7 DAYS BEFORE POLE INSTALLATION.
 2. REBAR HOOPS ARE TIED BEGINNING 3' BELOW TOP OF CONCRETE FORM AND ARE REPEATED AT APPROXIMATE 1' INTERVALS TO BOTTOM OF FOUNDATION.
 3. 1" ANCHOR BOLTS TO BE USED WITH 25' & 30' SQUARE AND ROUND POLES.
 4. CONCRETE FORM, OF SONOTUBE TO EXTEND TO BOTTOM OF TRENCH OR AS NEEDED.
 5. PROVIDE MIN. 24" GROUND WIRE PIGTAIL OUT OF CONCRETE FOR CONNECTION TO POLE.
 6. A MIN. OF 12" OF BARE #5 SD CU WIRE TO BE PLACED IN BOTTOM OF HOLE AND COVERED WITH 2" OF DIRT.
 7. IF SOIL HAS BEEN DISTURBED, EXTEND FOUNDATION BY DEPTH OF DISTURBED SOIL.
 8. NOT APPLICABLE FOR POLE HEIGHT GREATER THAN 40'.

This record drawing is a compilation of the sealed engineering drawing for this project, modified by addenda, change orders and information furnished by the contractor. The information shown on the record drawings that was provided by the contractor or others not associated with the design engineer cannot be verified for accuracy, or the completeness of their standards & practices. The design engineer's office is Birkhoff, Hendricks & Conway, L.L.P. BY J.W.B. DATE 05/04/2010

THESE DOCUMENTS ARE FOR BIDDING, CONSTRUCTION, AND PERMIT PURPOSES.

J.W.B.

DATE: 10/3/10

These plans and related specifications were prepared for the specific project only. Reuse of these documents is not permitted without the written approval of Birkhoff, Hendricks & Conway, L.L.P.

TOWN OF ADDISON, TEXAS

ADDISON ROAD IMPROVEMENTS
BELT LINE ROAD TO ARAPAHO ROAD PHASE I
ELECTRICAL MODIFICATION NOTES

BIRKHOFF, HENDRICKS & CONWAY, L.L.P.
 CONSULTING ENGINEERS
 Dallas, Texas

DESIGNED BY: <u>G.C.</u>	PROJECT: <u>2002_102</u>	SHEET NO. <u>E-0</u>
DRAWN BY: <u>B.H. & C.</u>	DATE: <u>SEPTEMBER 2006</u>	OF <u>68</u> SHEETS