

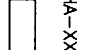
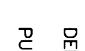
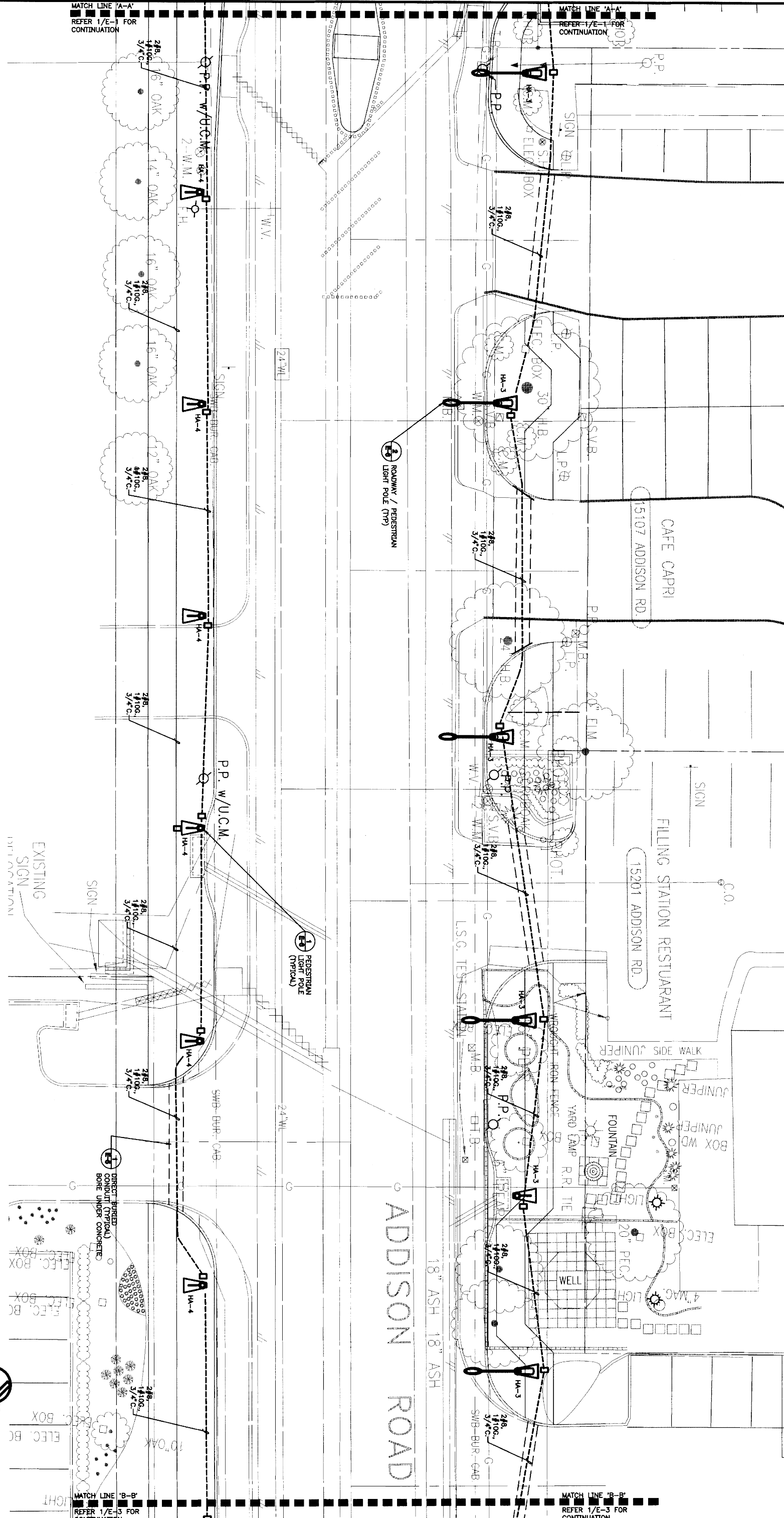


MATCH LINE 'A-A' REFER 1/E-3 FOR CONTINUATION

-  SA: TYPICAL
-  SB: TYPICAL
-  HA-XX DENOTES CIRCUIT NUMBER
-  PULLBOX. REFER TO DRAWING 5-2, DETAIL 2

1 ROADWAY LIGHTING - PART B-C

SCALE: 1"=10'-0"



MATCH LINE 'B-B' REFER 1/E-3 FOR CONTINUATION

This record drawing is a compilation of the sealed engineering drawing for this project, modified by addenda, engineering change orders, and field notes. The information shown on this drawing is the latest information provided by the contractor or others not associated with the design engineer. This original sealed drawing is on file at the offices of Birkhoff, Hendricks & Conway, L.L.P.
 BY J.W.B. DATE 05/04/2010

REVISION
 ELECTRICAL VOLTAGE CHANGES - OCTOBER 24, 2007



TOWN OF ADDISON, TEXAS

ADDISON ROAD IMPROVEMENTS
BELT LINE ROAD TO APARAHO ROAD PHASE I
ADDISON ROAD LANDSCAPE/LIGHTING

BIRKHOFF, HENDRICKS & CONWAY L.L.P.
 CONSULTING ENGINEERS

DESIGNED BY: <u>J.A.M.</u>	PROJECT: <u>ADD. IMP.</u>	SHEET NO. <u>E-2 (4)</u>
DRAWN BY: <u>J.A.C.</u>	DATE: <u>OCTOBER 24, 2007</u>	OF <u>4</u> SHEETS

Drawn