

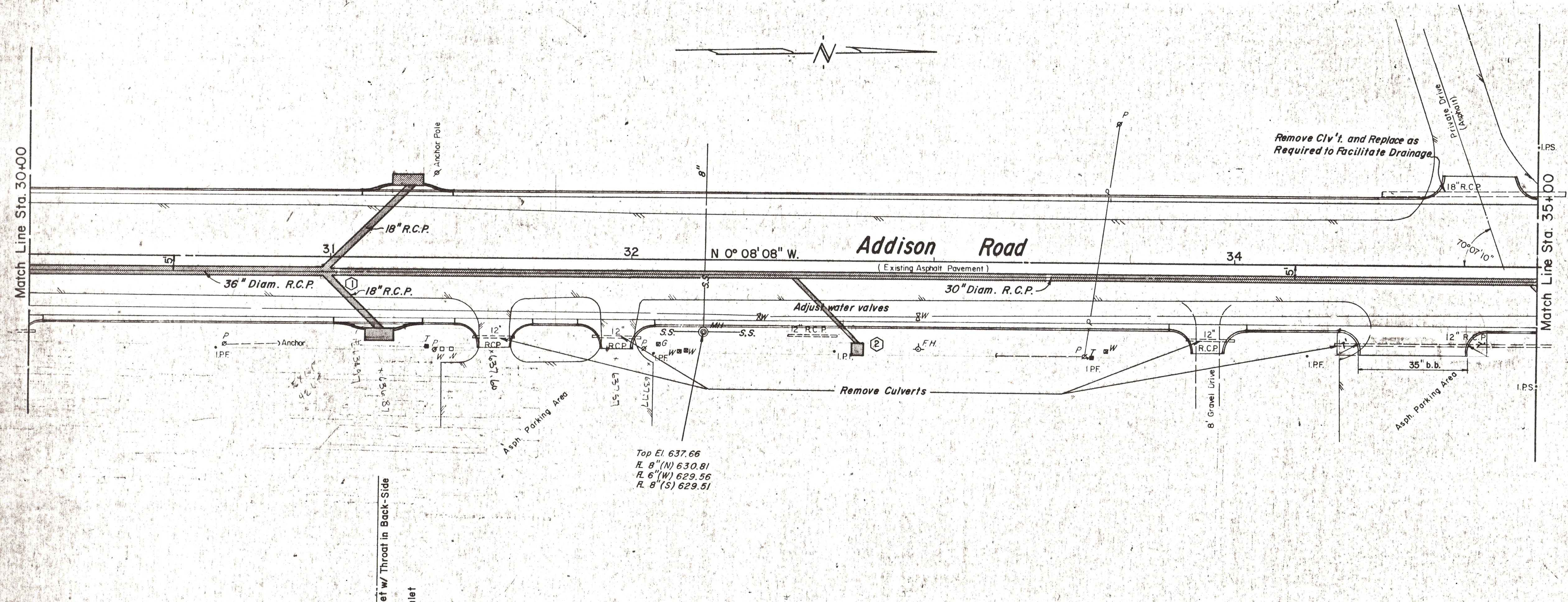
ESTIMATED QUANTITIES		UNIT	QUANTITY
30	30' R.C.P.	L.F.	400
29	36' R.C.P.	L.F.	100
32	18' R.C.P.	L.F.	130
19	Recessed Curb-Type Inlet	EA.	2
36	ADJUST WATER VALVES	EA.	2
34	ADJUST M.H.	EA.	1
1	REMOVE CONC.	EA.	5

- LEGEND**
- Bench Mark
 - ⊕ Hub and Teak
 - ⊙ Iron Pin
 - ⊙ MONUM. Monument
 - ⊙ G.M. Gas Meter
 - ⊙ G.V. Gas Valve
 - ⊙ G.L. Gas Line
 - ⊙ P.P. Power Pole (typical pole symbol)
 - ⊙ P.L. Power Line
 - ⊙ G.V.A. Guy Wire and Anchor
 - ⊙ T.T. Telephone Cable Box, or Riser
 - ⊙ W.L. Water Line
 - ⊙ W.V. Water Valve
 - ⊙ W.H. Water Hydrant
 - ⊙ W.S. Water Spigot
 - ⊙ M.H. Manhole
 - ⊙ C. Cleanout
 - ⊙ D.I. Drainage Inlet
 - ⊙ S.S. Sanitary Sewer Line
 - ⊙ S.L. Storm Sewer Line
 - ⊙ F.L. Fence Line
 - ⊙ F.D.I. Flow Direction Indicator
 - ⊙ P.R. Property or Right-of-Way Line
 - ⊙ E.L. Easement Line

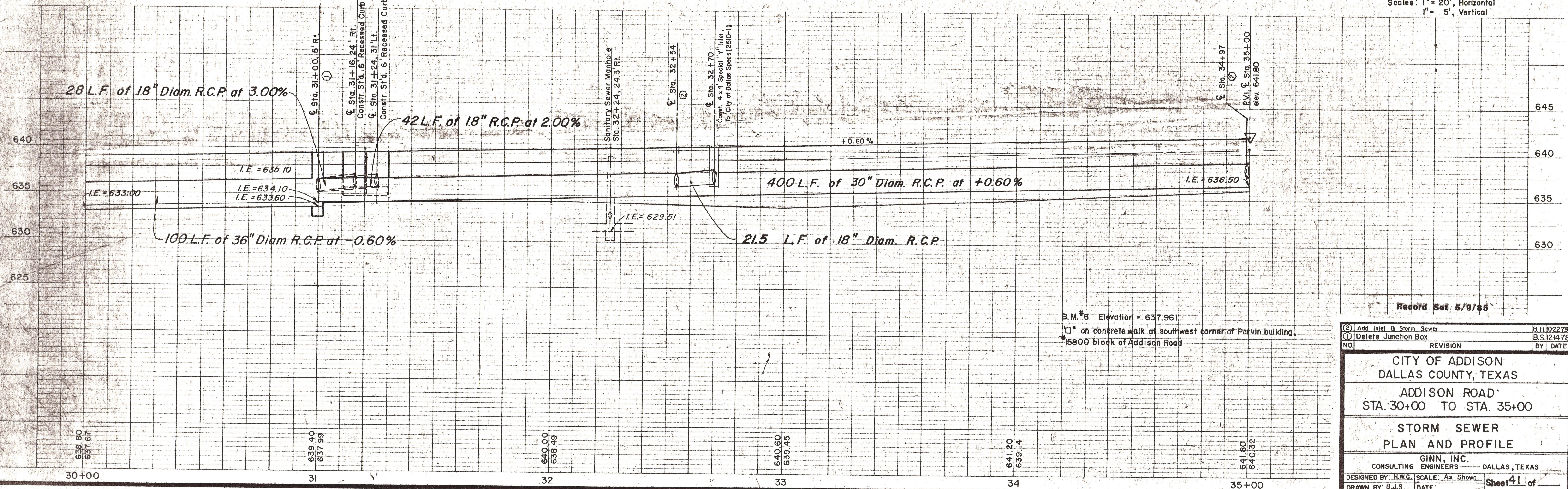
Scales: 1" = 20', Horizontal
1" = 5', Vertical

Match Line Sta. 30+00

Match Line Sta. 35+00



Top El. 637.66
R. 8"(N) 630.81
R. 6"(W) 629.56
R. 8"(S) 629.51



B.M. #6 Elevation = 637.961
□ on concrete walk at southwest corner of Parvin building, 15800 block of Addison Road

Record Set 5/9/85

② Add Inlet to Storm Sewer	B.H. 102279
① Delete Junction Box	B.S. 12476
NO.	REVISION BY DATE
CITY OF ADDISON DALLAS COUNTY, TEXAS	
ADDISON ROAD STA. 30+00 TO STA. 35+00	
STORM SEWER PLAN AND PROFILE	
GINN, INC. CONSULTING ENGINEERS DALLAS, TEXAS	
DESIGNED BY: H.W.G.	SCALE: As Shown
DRAWN BY: E.J.S.	DATE: Sheet 41 of