

Place 2 - Reaches of 48" R.C.P. at -0.50%
(Each Reach 38 L.F. Long). Construct 2 - Std.
T.H.D. CH II Headwalls Ends of
Reaches, As Shown.

Invert Elev. of Dual 48" R.C.P.'s = 633.00
I.E. = 633.19

Grade Area To Drain To Headwall

Constr. Std. T.H.D. CH II Headwall with Extended Height
Sanitary Sewer Manhole
T.E. = 636.5 ±
I.E. = 624.74

S.S.M.H.
T.E. = 636.5 ±
I.E. = 626.34

8" P.V.C. at +0.4%

Sanitary Sewer
Wye Connection
I.E. = 625.70

Addison Road C. Sta. 52+78.17 West
Keller Springs Rd. C. Sta. 1+73.16 West

Note: Warp Pavement To Elevations Shown
With Greater Drop At Gutter Lines

Remove Culvert

36" R.C.P.'s

Construct 2, 36" Manhole Riser Entries on Top
of T.H.D. Box Culvert. Construct Tops to
Side-Slope Grade.

Note: For Quantities East Of This Structure
See Keller Springs Rd. Sheets

Note: See Keller Springs Storm Sewer
Sheets for Rest of Layout and
Profile to the East.

Construct Std. Tex. Hwy. Dept. CH II Headwall

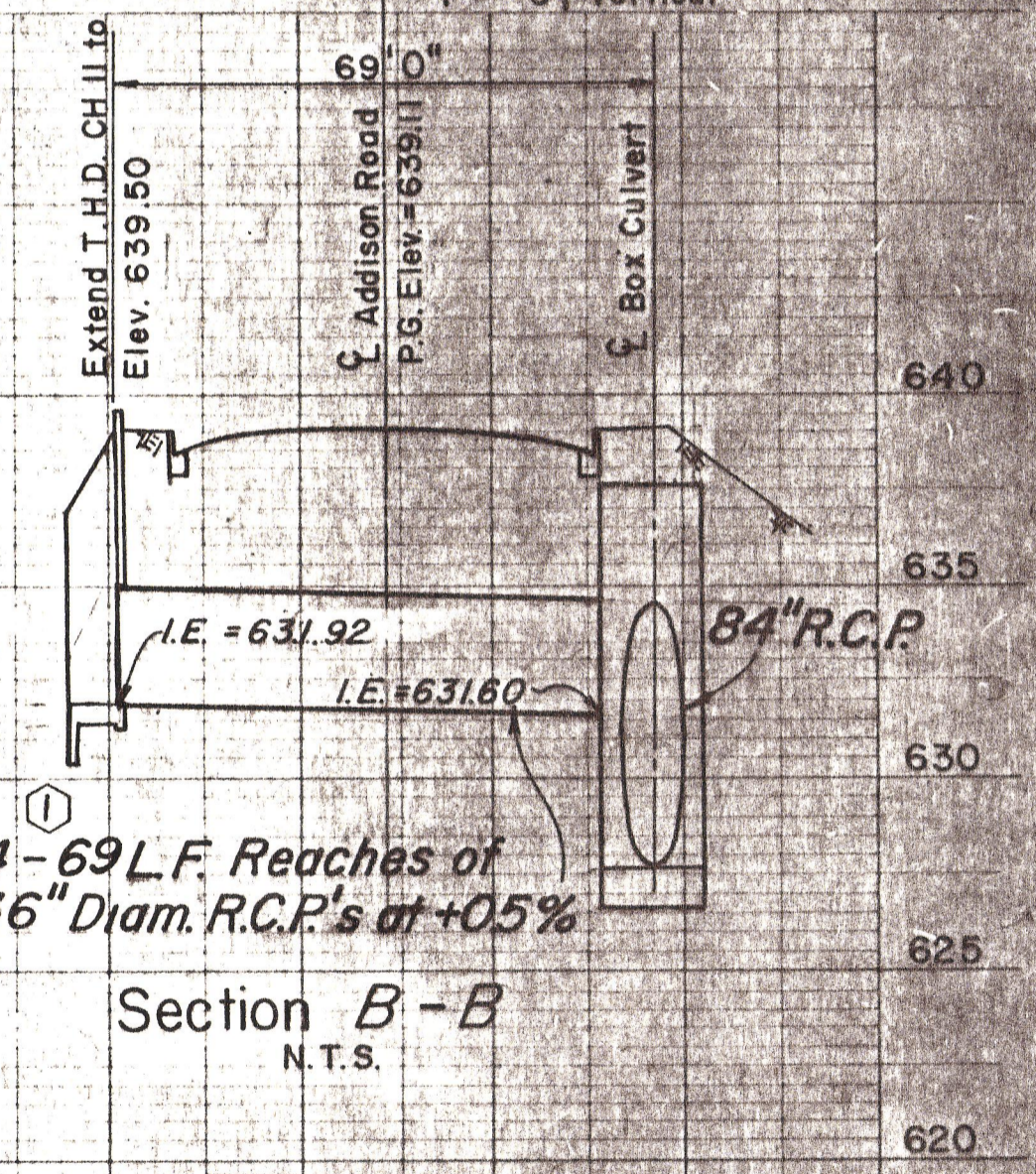
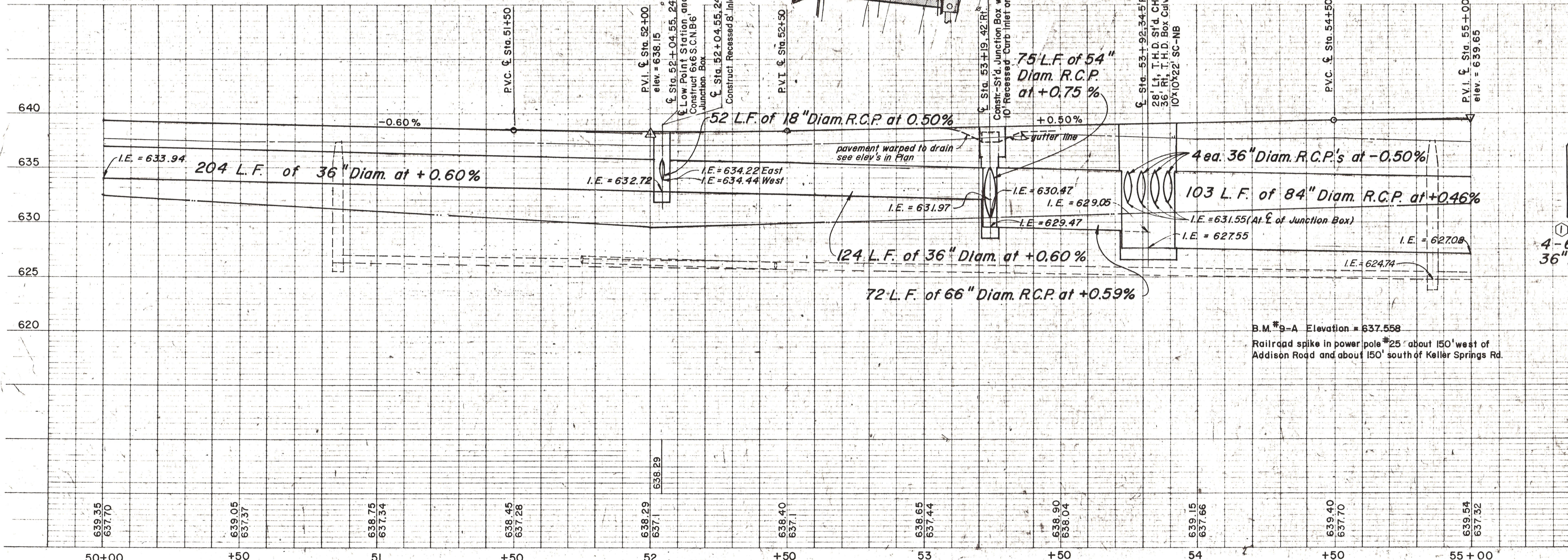
8" P.V.C. Service
Line at +0.4%

ESTIMATED QUANTITIES			
ITEM	DESCRIPTION	UNIT	QUANTITY
32	18" R.C.P.	L.F.	52
29	36" R.C.P.	L.F.	604
27	48" R.C.P.	L.F.	76
24	66" R.C.P.	L.F.	72
23	84" R.C.P.	L.F.	103
19	Recessed Curb - Type Inlet	EA.	3
21	Junction Box	EA.	1
22	T.H.D. Headwalls	EA.	3
34	Adjust Manholes	EA.	2
36	ADJUST VALVE BOXES	EA.	2
I	REMOVE CONC.	EA.	3
13	MISC. CONC.	EA.	10

Note: Storm Sewerage Shown on Keller Springs Rd. are Located
and Quantified on Sheet No. 60

- LEGEND
- Bench Mark
 - ⊕ Hub and Tack
 - ⊙ Iron Pin
 - ⊙ Monument
 - ⊙ Gas Meter
 - ⊙ Gas Valve
 - ⊙ Gas Line
 - ⊙ Power Pole (typical pole symbol)
 - ⊙ Power Line
 - ⊙ Guy Wire and Anchor
 - ⊙ Telephone Cable Box or Pole
 - ⊙ Telephone Line
 - ⊙ Water Meter
 - ⊙ Water Valve
 - ⊙ Water Line
 - ⊙ Fire Hydrant
 - ⊙ Water Sprig
 - ⊙ Manhole
 - ⊙ Cleanout
 - ⊙ Drainage Inlet
 - ⊙ Sanitary Sewer Line
 - ⊙ Storm Sewer Line
 - ⊙ Fence Line
 - ⊙ Flow Direction Indicator
 - ⊙ Property or Right-of-Way Line
 - ⊙ Easement Line

Scales: 1" = 20', Horizontal
1" = 5', Vertical



B.M. #9-A Elevation = 637.558
Railroad spike in power pole #25 about 150' west of
Addison Road and about 150' south of Keller Springs Rd.

NO.	REVISION	BY	DATE
1	Chg. B Inlet To 6x6 Junction Box		S.M. 11-6-79
2	Elev's to Warp Pvmh; Correct Pipe Lengths; MH's		B.S. 12/4/78

CITY OF ADDISON
DALLAS COUNTY, TEXAS

**ADDISON ROAD
STA. 50+00 TO STA. 55+00**

**STORM SEWER
PLAN AND PROFILE**

GINN, INC.
CONSULTING ENGINEERS DALLAS, TEXAS

DESIGNED BY: H.W.G. SCALE: AS SHOWN
DRAWN BY: B.J.S. DATE: Sheet 45 of