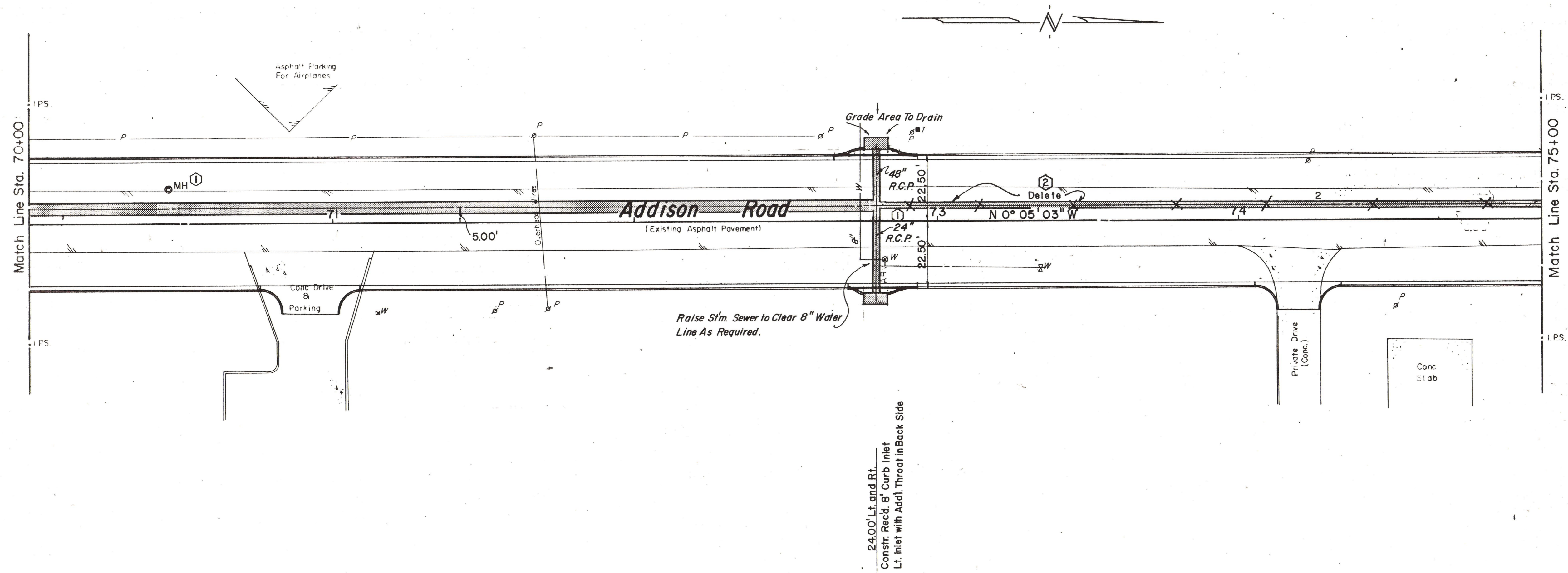


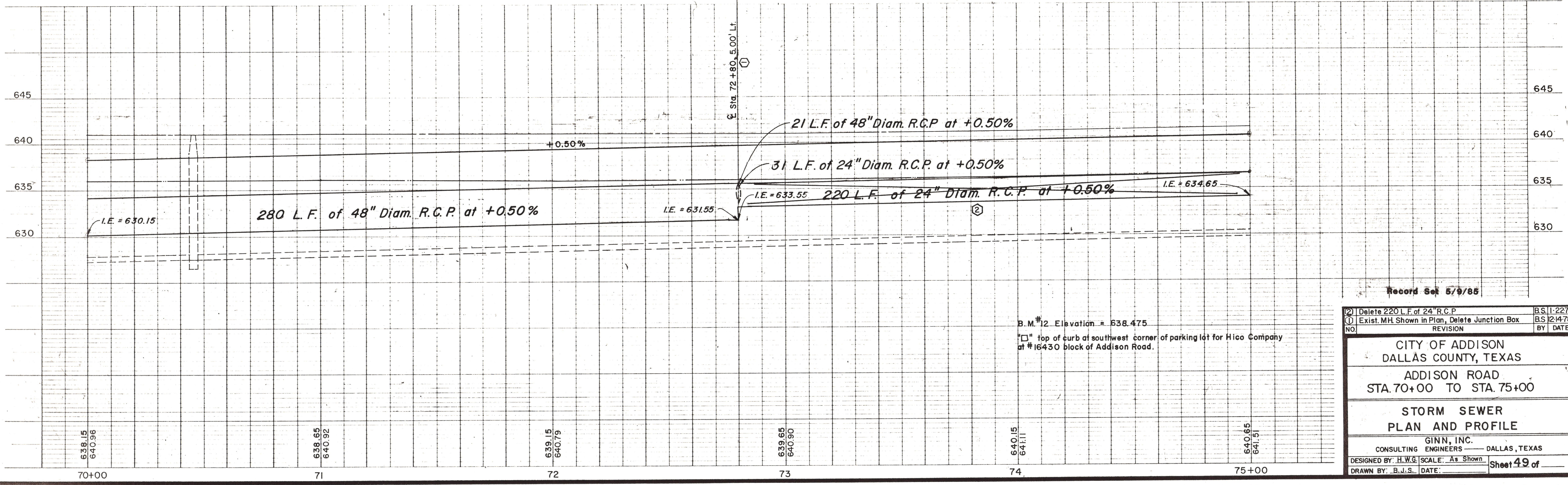
ESTIMATED QUANTITIES			
ITEM	DESCRIPTION	UNIT	QUANTITY
31	24" R.C.P.	L.F.	31
27	48" R.C.P.	L.F.	310
19	Recessed Curb-Type Inlets	EA.	2
1	Remove Conc.	EA.	2
36	Adjust Valve Boxes	EA.	2
34	Adjust M.H.'s	EA.	1



**LEGEND**

- Bench Mark
- ⊕ Hub and Tank
- ⊙ Iron Pin
- ⊙ Monument
- ⊙ Gas Meter
- ⊙ Gas Valve
- ⊙ Power Pole (typical pole symbol)
- ⊙ Power Line
- ⊙ Guy Wire and Anchor
- ⊙ Telephone Cable Box, or Riser
- ⊙ Telephone Line
- ⊙ Water Meter
- ⊙ Water Valve
- ⊙ Water Line
- ⊙ Fire Hydrant
- ⊙ Water Spigot
- ⊙ Manhole
- ⊙ Cleanout
- ⊙ Drainage Inlet
- ⊙ Sanitary Sewer Line
- ⊙ Storm Sewer Line
- ⊙ Fence Line
- ⊙ Flow Direction Indicator
- ⊙ Property or Right-of-Way Line
- ⊙ Easement Line

Scales: 1" = 20', Horizontal  
1" = 5', Vertical



Record Set 5/9/85

② Delete 220 L.F. of 24" R.C.P.	B.S. 11-2275
① Exist. MH Shown in Plan, Delete Junction Box	B.S. 12-1478
NO.	REVISION
BY	DATE

CITY OF ADDISON  
DALLAS COUNTY, TEXAS

ADDISON ROAD  
STA. 70+00 TO STA. 75+00

STORM SEWER  
PLAN AND PROFILE

GINN, INC.  
CONSULTING ENGINEERS — DALLAS, TEXAS

DESIGNED BY: H.W.G. SCALE: As Shown  
DRAWN BY: B.J.S. DATE: \_\_\_\_\_

Sheet 49 of \_\_\_\_\_

B.M. #12 Elevation = 638.475  
"□" top of curb at southwest corner of parking lot for Hico Company at #16430 block of Addison Road.