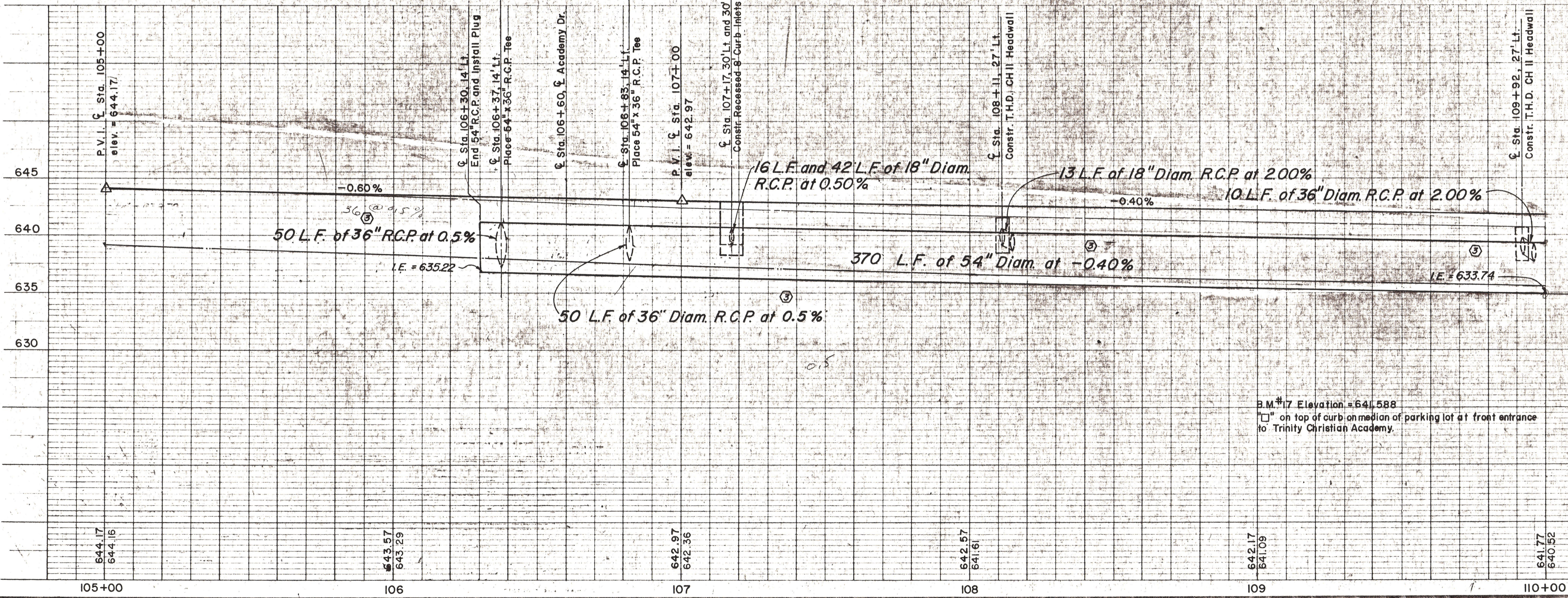
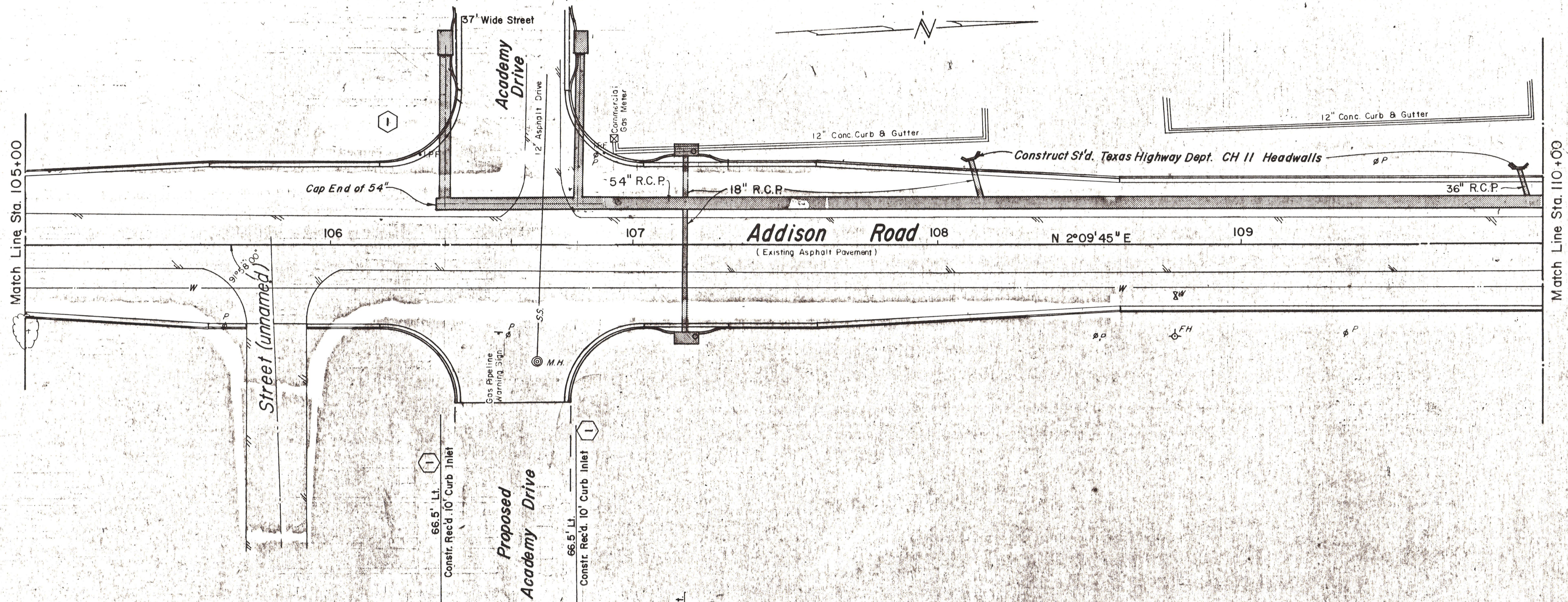


ESTIMATED QUANTITIES		UNIT	QUANTITY
32	18" R.C.P.	L.F.	100
29	36" R.C.P.	L.F.	50
26	54" R.C.P.	L.F.	370
28	42" R.C.P.	L.F.	50
19	Recessed Curb-Type Inlets	EA.	4
22	Headwalls	EA.	2
34	Adjust M.H.'s	EA.	2
36	Adjust Valve Boxes	EA.	2
1	Remove Conc.	EA.	1
13	Misc. Conc.	C.Y.	10

LEGEND

- Bench Mark
- ⊕ Hub and Test
- ⊕ Iron Pin
- ⊕ Monument
- ⊕ Gas Meter
- ⊕ Gas Valve
- ⊕ Power Pole (typical pole symbol)
- ⊕ Power Line
- ⊕ Guy Wire and Anchor
- ⊕ Telephone Cable Box, or Riser
- ⊕ Telephone Line
- ⊕ Water Meter
- ⊕ Water Valve
- ⊕ Water Line
- ⊕ Fire Hydrant
- ⊕ Water Spigot
- ⊕ Manhole
- ⊕ Cleanout
- ⊕ Drainage Inlet
- ⊕ Sanitary Sewer Line
- ⊕ Storm Sewer Line
- ⊕ Fence Line
- ⊕ Flow Direction Indicator
- ⊕ Property or Right-of-Way Line
- ⊕ Easement Line

Scales: 1" = 20', Horizontal
1" = 5', Vertical



⊕	Corrected Elevations & Slope	DB 5-15-75
⊕	Quantity Error Corrected (No Change in Totals)	B.S.F-22-75
⊕	Headwall Note Replaced w/ Correct Inlet Notes	B.S.F-24-75
NO	REVISION	BY DATE

B.M. #17 Elevation = 641.588
 "1" on top of curb on median of parking lot at front entrance to Trinity Christian Academy.

CITY OF ADDISON
DALLAS COUNTY, TEXAS

ADDISON ROAD
STA. 105+00 TO STA. 110+00

STORM SEWER
PLAN AND PROFILE

GINN, INC.
 CONSULTING ENGINEERS - DALLAS, TEXAS

DESIGNED BY: H.W.B. SCALE: As Shown
 DRAWN BY: B.J.S. DATE: _____

Sheet 57 of _____