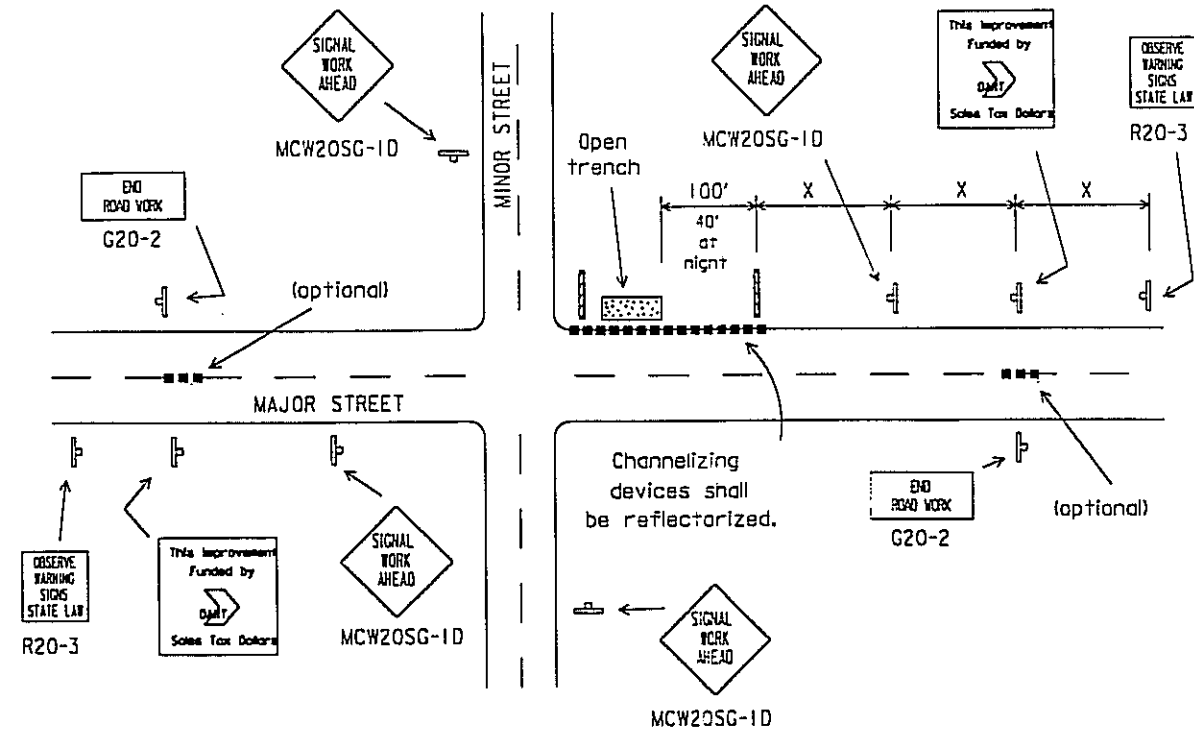
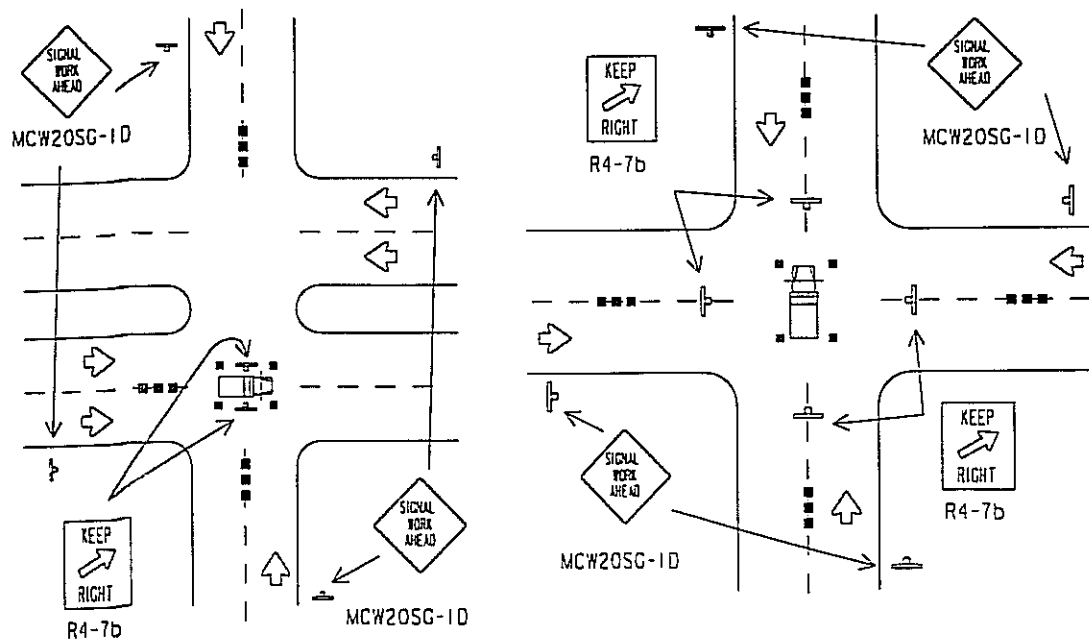


**TYPICAL DETECTOR INSTALLATION**

Nighttime - 1. Channelizing Devices shall be reflectorized.  
2. Barricades shall have Flashing Warning Lights.



**TYPICAL ADVANCE SIGNING**



**TYPICAL HANGING SIGNAL INSTALLATIONS**

Advance warning channelizing devices are optional.

Posted Speed	Formula	Minimum Desirable Taper Lengths			Suggested Maximum Spacing of Device		Minimum Sign Spacing X Distance
		10' Offset	11' Offset	12' Offset	On a Taper	On a Tangent	
30	$L = \frac{WS^2}{60}$	150'	165'	180'	30'	60'-75'	120'
35		205'	225'	245'	35'	70'-90'	160'
40	$L = WS$	265'	295'	320'	40'	80'-100'	240'
45		450'	495'	540'	45'	90'-110'	320'

L=Length of Taper (FT.) W=Width of Offset (FT.) S=Posted Speed (MPH)

▲ The arrow panel may be omitted when stated elsewhere in the plans.

Typical channelizing device is the 28" cone. Plastic drums may be used if approved by the Owner. Metal drums shall NOT be used as a channelizing device or sign support.

Advance signs and barricades shall be in place when signal construction operations are in progress. The contractor may remove advance signs and barricades when no construction operations are underway if permitted elsewhere in the plans. Obstructions or hazards at the work area shall be clearly marked and delineated at all times.

All holes, trenches or other hazardous areas shall be adequately protected by barricades, lights or other protective devices. Trenches shall be covered or surrounded with orange plastic construction fence as directed by the Engineer.

Flagger and MCW20-7a sign may be required according to field conditions. Vehicles parked in roadway shall be equipped with two strabes. High level flags at corners of vehicle may also be used. Work operations that require work vehicle in traveled way 20 minutes or less may use cones, high level flags and strabes as advance warning devices. Cones should only be placed around vehicle. Flaggers may be used on high speed rural intersections.

**BUILT AS PER SPECIFICATIONS AND PLANS BY DURABLE SPECIALTIES INC.**  
PROJECT COORDINATOR *John...*

- Legend
- Heavy Work Vehicle
  - Type I Barricade
  - Channelizing Devices
  - Flashing Arrow Panel



The seal appearing on this document was authorized by Alan P. McNeil, P.E., STPEL on July 8, 1996. Alteration of a sealed document without proper notification to the responsible Engineer is an offense under the Texas Engineering Practice Act.

*Alan P. McNeil*

TOWN OF ADDISON DALLAS COUNTY, TEXAS			
TRAFFIC CONTROL PLAN DETAILS			
SHEET 1 OF 2			
PROJECT NO. 44857			
PARSONS TRANSPORTATION GROUP MEMPHIS - MEMPHIS, TN 38103			
DATE	DATE	DATE	DATE
APR	APR	APR	APR
			7 of 8