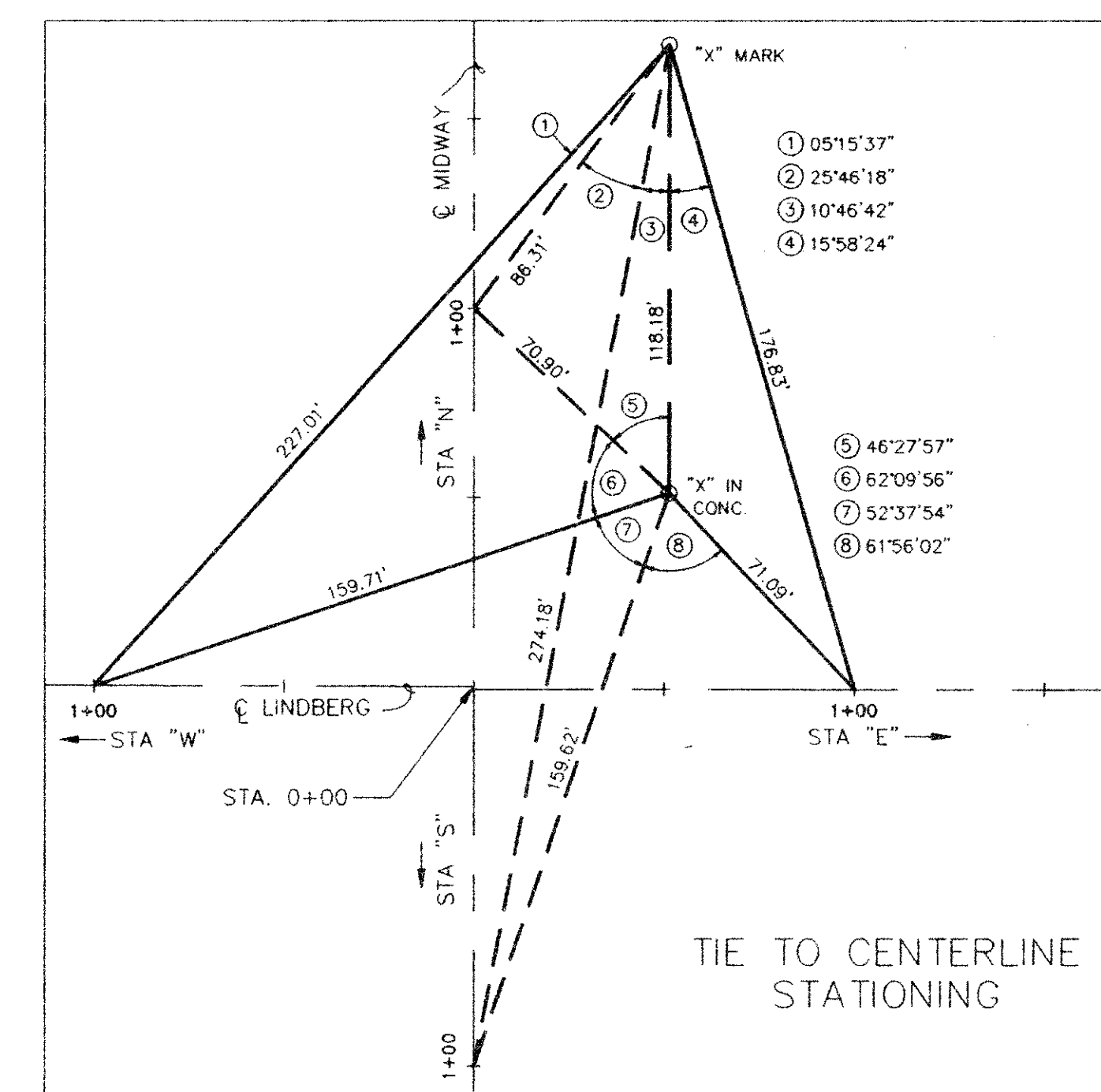
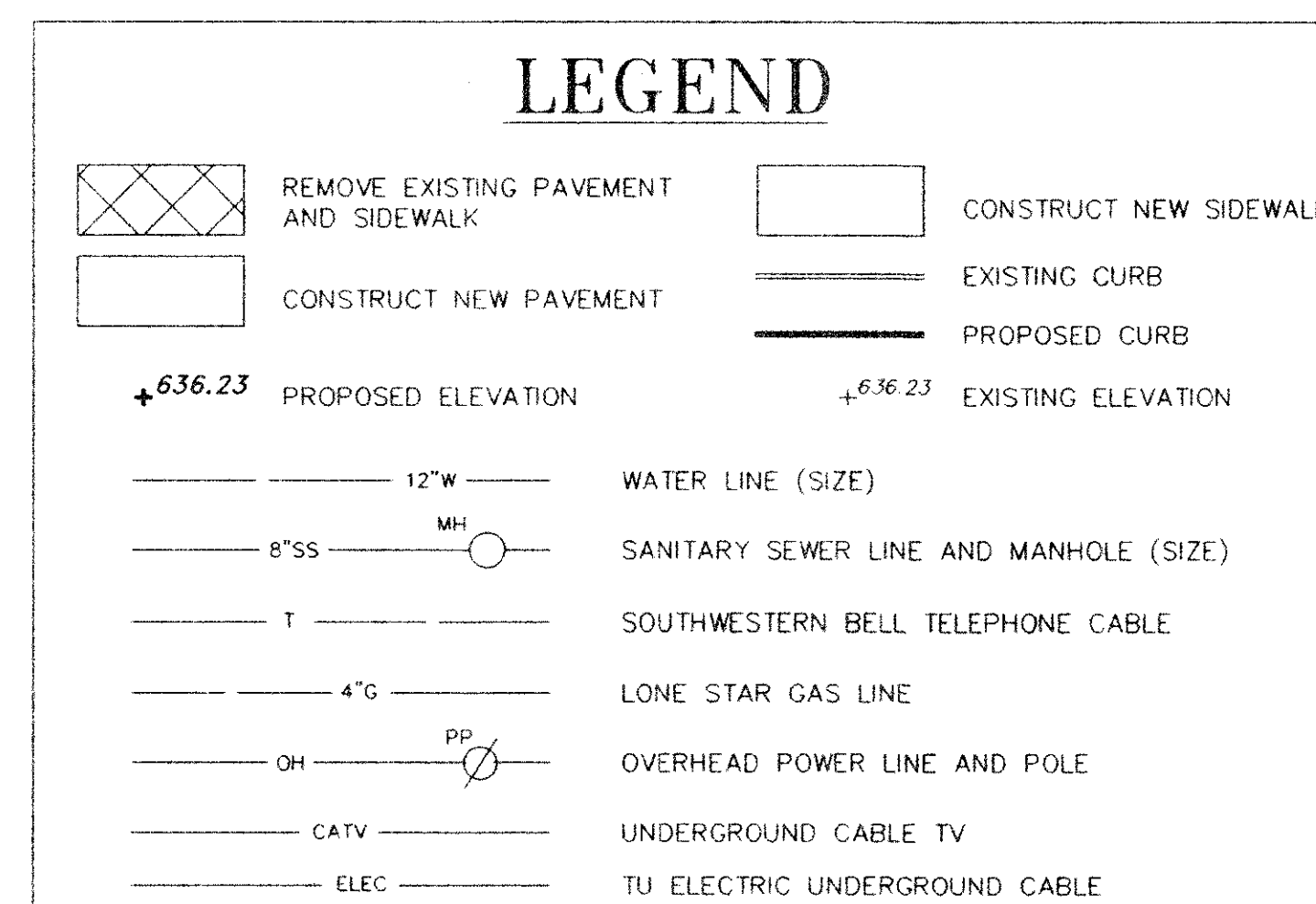


**!! WARNING !!**  
 LOCATION OF EXISTING UTILITIES SHOWN ARE APPROXIMATE! CONTRACTOR SHALL FIELD VERIFY LOCATIONS OF ALL EXISTING UTILITIES PRIOR TO CONSTRUCTION. CONTRACTOR SHALL CONTACT:

LONE STAR GAS CO.	487-3885
SOUTHWESTERN BELL	234-7085
T.U. ELECTRIC	323-8913
STORER CABLE	840-2388
DALLAS WATER UTILITIES	670-5700
ADDISON WATER AND SEWER UTILITIES	450-2870

**NOTES**

- CONTRACTOR SHALL DETERMINE THE LOCATION OF, AND REMOVE AND/OR RELOCATE, ALL AFFECTED SPRINKLER SYSTEMS INCLUDING HEADS, METERS, LINES AND OTHER APPURTENANCES AS DIRECTED BY THE TOWN OF ADDISON. (NO SEPARATE PAY ITEM)
- CONTRACTOR SHALL REMOVE AND/OR RELOCATE ALL EXISTING LANDSCAPING IMPROVEMENTS INCLUDING TREES, SHRUBS, BOULDERS AND STEEL EDGING AS DIRECTED BY THE TOWN OF ADDISON. (NO SEPARATE PAY ITEM)
- CONTRACTOR SHALL MATCH EXISTING PAVEMENT ELEVATION AT SAWCUT LINE.
- ALL DIMENSIONS ARE TO FACE OF CURB UNLESS OTHERWISE NOTED.



NO.	REVISION	BY	DATE

DESIGNED BY: J WALDBAUER  
 DRAWN BY: EH&A  
 CHECKED BY: B GRANTHAM  
 SCALE: 1" = 20'  
 DATE: DECEMBER, 1993  
 FILE: \ADDISON\PROJECT3\MIDLINE

**EH&A** **Espey, Huston & Associates, Inc.**  
 Engineering & Environmental Consultants  
 13800 Montfort Drive, Suite 230  
 Dallas, Texas 75240 (214) 387-0771

**PAVING PLAN**  
 INTERSECTION IMPROVEMENTS  
 MIDWAY ROAD AT LINDBERG DRIVE  
 for  
 THE TOWN OF ADDISON

SHEET NO. **3**  
 OF **31** SHEETS  
 JOB NO. **13921**