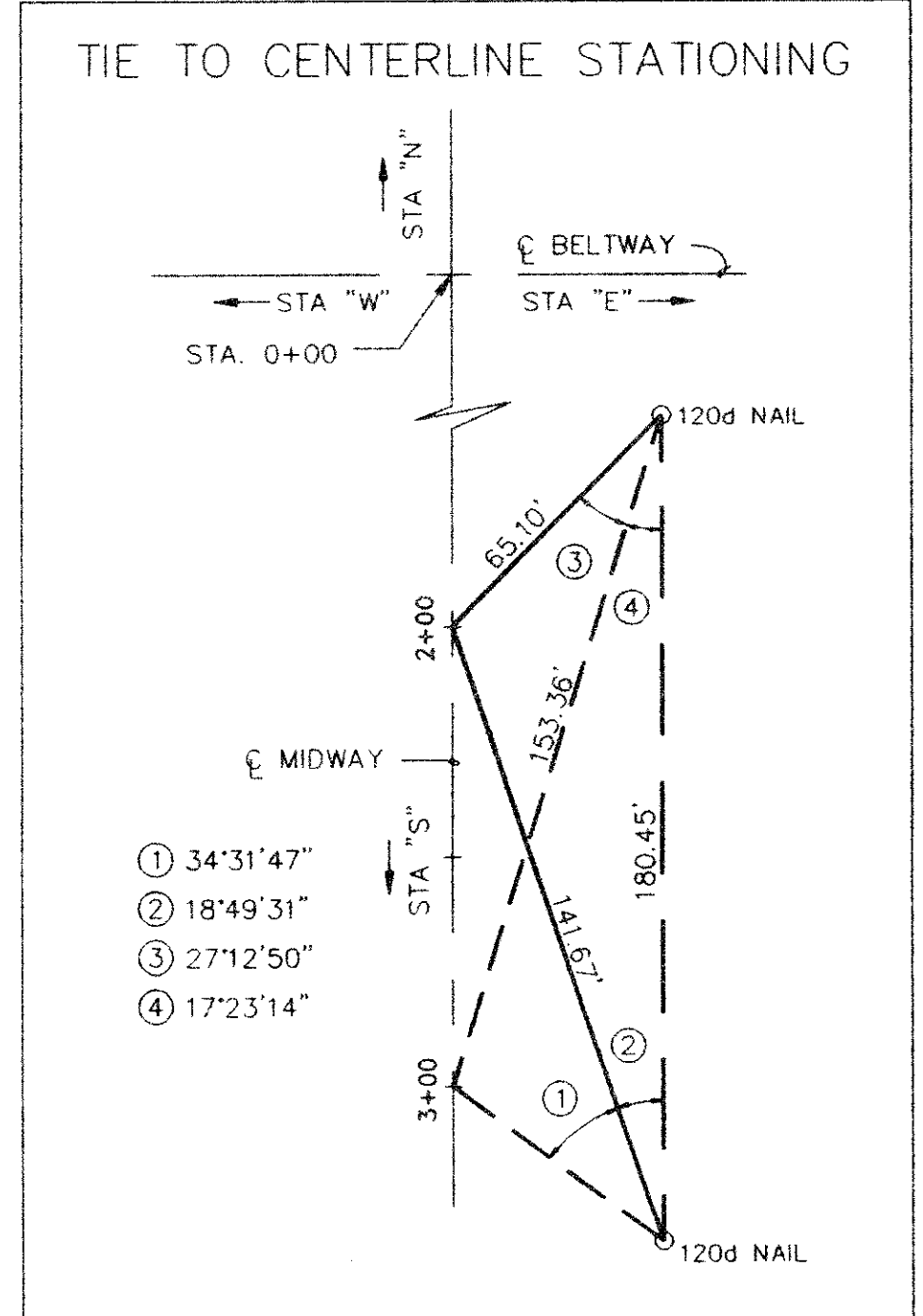
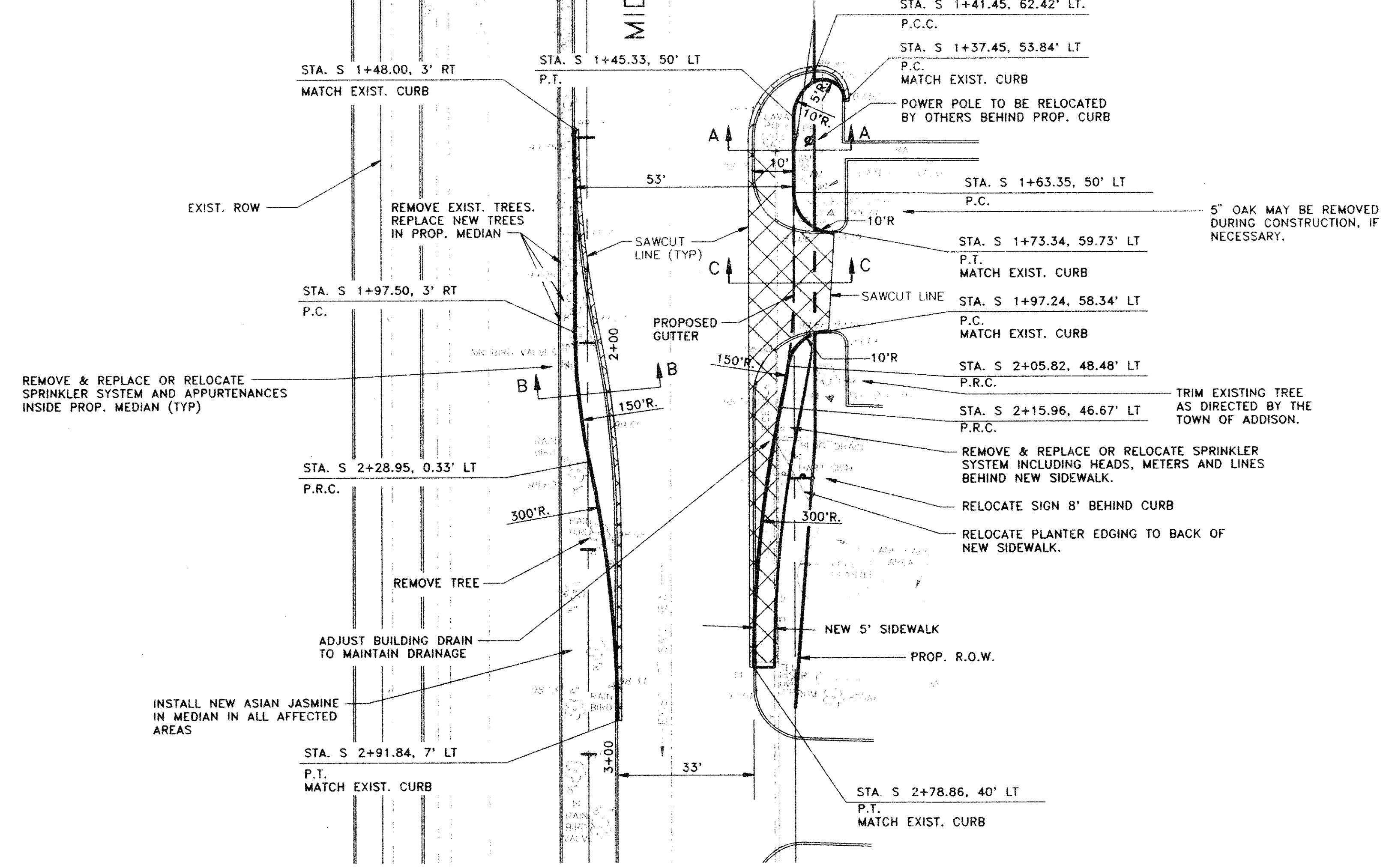


**!! WARNING !!**  
 LOCATION OF EXISTING UTILITIES SHOWN ARE APPROXIMATE! CONTRACTOR SHALL FIELD VERIFY LOCATIONS OF ALL EXISTING UTILITIES PRIOR TO CONSTRUCTION. CONTRACTOR SHALL CONTACT:

LONE STAR GAS CO.	487-3885
SOUTHWESTERN BELL	234-7085
T.U. ELECTRIC	323-8913
STORER CABLE	840-2388
DALLAS WATER UTILITIES	670-5700
ADDITION WATER AND SEWER UTILITIES	450-2870

**LEGEND**

	REMOVE EXISTING PAVEMENT AND SIDEWALK		CONSTRUCT NEW SIDEWALK
	CONSTRUCT NEW PAVEMENT		EXISTING CURB
	PROPOSED ELEVATION		EXISTING ELEVATION
	12" W WATER LINE (SIZE)		8" SS SANITARY SEWER LINE AND MANHOLE (SIZE)
	T SOUTHWESTERN BELL TELEPHONE CABLE		4" G LONE STAR GAS LINE
	OH OVERHEAD POWER LINE AND POLE		CATV UNDERGROUND CABLE TV
	ELEC TU ELECTRIC UNDERGROUND CABLE		



**BENCHMARK**  
 CUT "□" AT BACK OF CURB RETURN/TOP OF CURB AT THE SOUTHEAST CORNER OF BELTWAY DRIVE AND MIDWAY ROAD. ASSUMED ELEV. 100

- NOTES**
- CONTRACTOR SHALL DETERMINE THE LOCATION OF, AND REMOVE AND/OR RELOCATE, ALL AFFECTED SPRINKLER SYSTEMS INCLUDING HEADS, METERS, LINES AND OTHER APPURTENANCES AS DIRECTED BY THE TOWN OF ADDISON. (NO SEPARATE PAY ITEM)
  - CONTRACTOR SHALL REMOVE AND/OR RELOCATE ALL EXISTING LANDSCAPING IMPROVEMENTS INCLUDING TREES, SHRUBS, BOULDERS AND STEEL EDGING AS DIRECTED BY THE TOWN OF ADDISON. (NO SEPARATE PAY ITEM)
  - CONTRACTOR SHALL MATCH EXISTING PAVEMENT ELEVATION AT SAWCUT LINE.
  - ALL DIMENSIONS ARE TO FACE OF CURB UNLESS OTHERWISE NOTED.

NO.	REVISION	BY	DATE

DESIGNED BY: J WALDBAUER  
 DRAWN BY: EH&A  
 CHECKED BY: B GRANTHAM  
 SCALE: 1" = 20'  
 DATE: DECEMBER 1993  
 FILE: \ADDISON\PROJECTS\MIDBELT

**EH&A** **Espey, Huston & Associates, Inc.**  
 Engineering & Environmental Consultants  
 13800 Montfort Drive, Suite 230  
 Dallas, Texas 75240 (214) 387-0771

**PAVING PLAN**  
 INTERSECTION IMPROVEMENTS  
 MIDWAY ROAD AT BELTWAY DRIVE  
 for  
 THE TOWN OF ADDISON

SHEET NO. 4  
 OF 31 SHEETS  
 JOB NO. 13921