

MEDIAN DIMENSION CHART

B	C	D	E	F	G	H	I	J	K	L	M	N
12'	4.00'S	3.80'S	3.20'S	2.19'S	0.78'S	1.00'N	2.78'N	4.19'N	5.20'N	5.80'N	22.56'	1.00'
13'	3.50'S	3.30'S	2.70'S	1.69'S	0.28'S	1.50'N	3.28'N	4.69'N	5.70'N	6.30'N	23.56'	1.00'
14'	3.00'S	2.80'S	2.20'S	1.19'S	0.22'N	2.00'N	3.78'N	5.19'N	6.20'N	6.80'N	22.68'	2.50'
15'	2.50'S	2.30'S	1.70'S	0.69'S	0.72'N	2.50'N	4.28'N	5.69'N	6.70'N	7.30'N	23.71'	2.50'
16'	2.00'S	1.80'S	1.20'S	0.19'S	1.22'N	3.00'N	4.78'N	6.19'N	7.20'N	7.80'N	23.46'	3.50'
17'	1.50'S	1.30'S	0.70'S	0.31'N	1.72'N	3.50'N	5.28'N	6.69'N	7.70'N	8.30'N	24.48'	3.50'
18'	1.00'S	0.80'S	0.20'S	0.81'N	2.22'N	4.00'N	5.78'N	7.19'N	8.20'N	8.80'N	25.44'	3.50'
19'	0.50'S	0.30'S	0.30'N	1.31'N	2.72'N	4.50'N	6.28'N	7.69'N	8.70'N	9.30'N	26.34'	3.50'
20'	0.00'	0.20'N	0.80'N	1.81'N	3.22'N	5.00'N	6.78'N	8.19'N	9.20'N	9.80'N	26.72'	4.00'
21'	0.50'N	0.70'N	1.30'N	2.31'N	3.72'N	5.50'N	7.28'N	8.69'N	9.70'N	10.30'N	27.57'	4.00'
22'	1.00'N	1.20'N	1.80'N	2.81'N	4.22'N	6.00'N	7.78'N	9.19'N	10.20'N	10.80'N	28.39'	4.00'
23'	1.50'N	1.70'N	2.30'N	3.31'N	4.72'N	6.50'N	8.28'N	9.69'N	10.70'N	11.30'N	29.17'	4.00'
24'	2.00'N	2.30'N	2.80'N	3.81'N	5.22'N	7.00'N	8.78'N	10.19'N	11.20'N	11.80'N	29.92'	4.00'

N = NORTH OF CENTERLINE
S = SOUTH OF CENTERLINE

CURVE DATA C3 & C4 FOR 7' A=14'

A	R	T	L	M	N
7'	18°22'52"	50'	8.09'	16.04'	16.45'
8'	20°09'11"		8.89'	17.59'	17.88'
9'	21°47'12"		9.62'	19.01'	19.19'
10'	23°18'41"		10.31'	20.34'	20.39'
11'	24°44'50"		10.97'	21.60'	21.51'
12'	26°06'32"		11.59'	22.78'	22.56'
13'	27°24'27"		12.19'	23.92'	23.56'
14'	28°08'28"		11.15'	21.94'	22.68'

CURVE DATA C1 C2 FOR Δ = 11°28'40"

R = 250'
T = 25.13'
L = 50.08'

CURVE DATA C3 & C4 FOR 12' B=24'

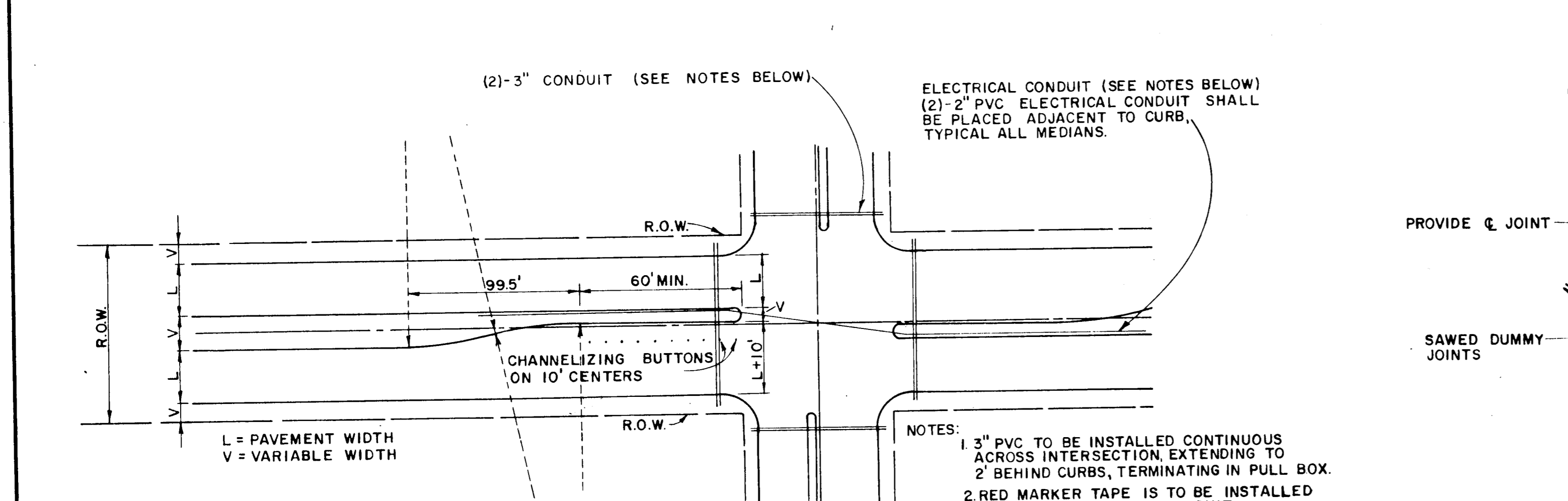
B	Δ	R	T	L
12'	26°06'32"	50.00'	11.59'	22.78'
13'	27°24'27"		12.19'	23.92'
14'	28°08'28"		11.15'	21.94'
15'	26°31'32"		11.79'	23.15'
16'	25°24'53"		11.27'	22.18'
17'	26°48'51"		11.92'	23.40'
18'	28°08'58"		12.54'	24.57'
19'	29°25'43"		13.13'	25.68'
20'	29°35'30"		13.21'	25.82'
21'	30°49'46"		13.79'	26.90'
22'	32°01'26"		14.35'	27.95'
23'	33°10'48"		14.90'	28.96'
24'	34°18'05"		15.43'	29.93'

CURVE DATA C5 FOR 12' B=24'

B	Δ	R	T	L
12'	127°47'32"	1.00'	2.04'	2.23'
13'	125°12'46"	1.00'	1.93'	2.19'
14'	129°43'08"	2.50'	5.33'	5.66'
15'	126°57'31"	2.50'	5.01'	5.54'
16'	129°09'33"	3.50'	7.36'	7.89'
17'	126°21'44"	3.50'	6.92'	7.72'
18'	123°41'38"	3.50'	6.54'	7.56'
19'	120°52'03"	3.50'	6.17'	7.38'
20'	120°48'56"	4.00'	7.04'	8.43'
21'	118°48'56"	4.00'	6.70'	8.26'
22'	115°57'07"	4.00'	6.40'	8.10'
23'	113°38'22"	4.00'	6.12'	7.93'
24'	111°23'48"	4.00'	5.86'	7.78'

CURVE DATA C5 FOR 7' A=14'

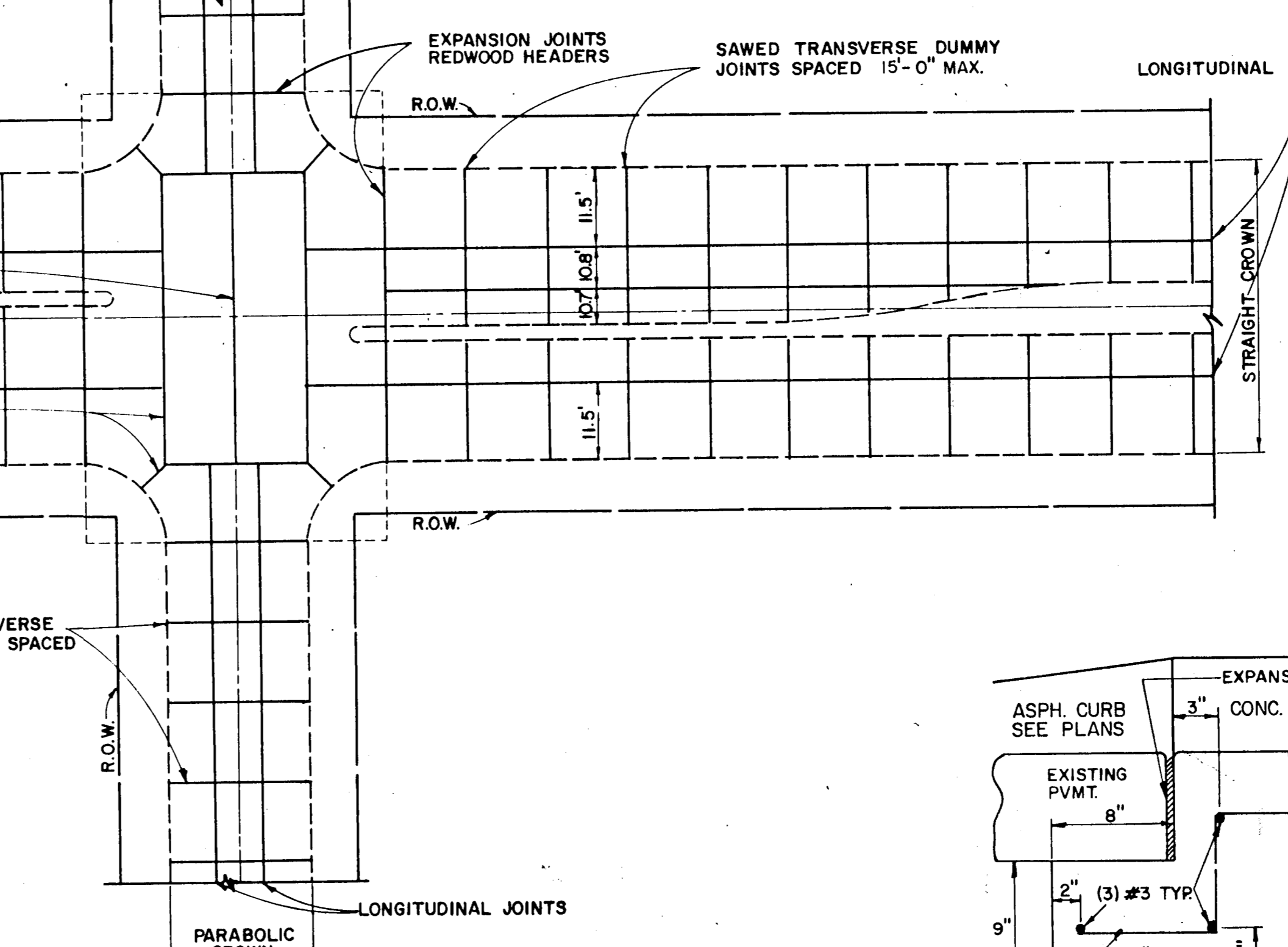
A	R	T	L
7'	143°14'15"	1.00'	3.01'
8'	139°41'38"	1.00'	2.72'
9'	136°25'35"	1.00'	2.50'
10'	133°22'58"	1.00'	2.32'
11'	130°30'20"	1.00'	2.17'
12'	127°47'32"	1.00'	2.04'
13'	125°12'46"	1.00'	1.93'
14'	129°43'08"	2.50'	5.33'



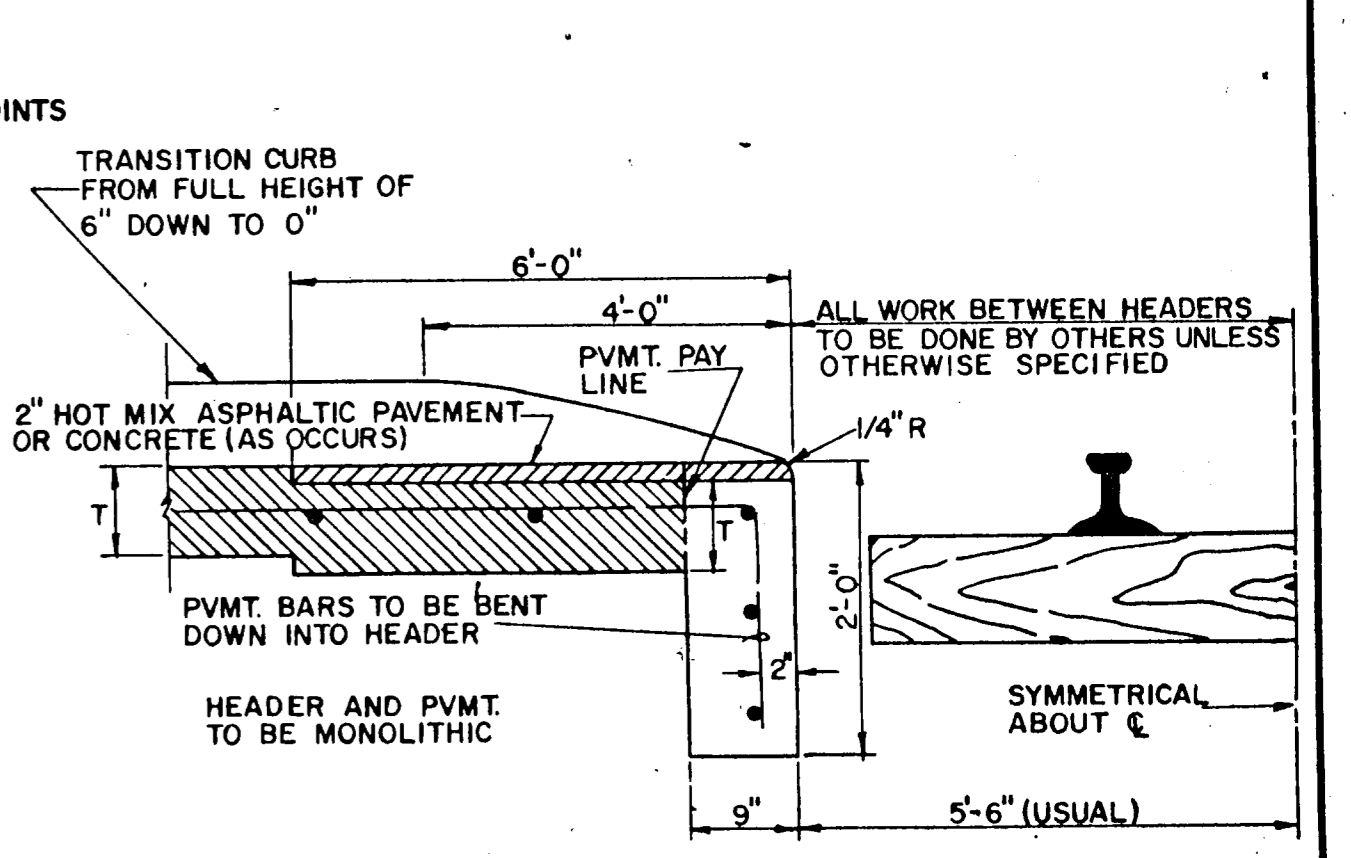
CONDUIT

FOR EXACT LOCATIONS, THIS PROJECT-SEE PLANS

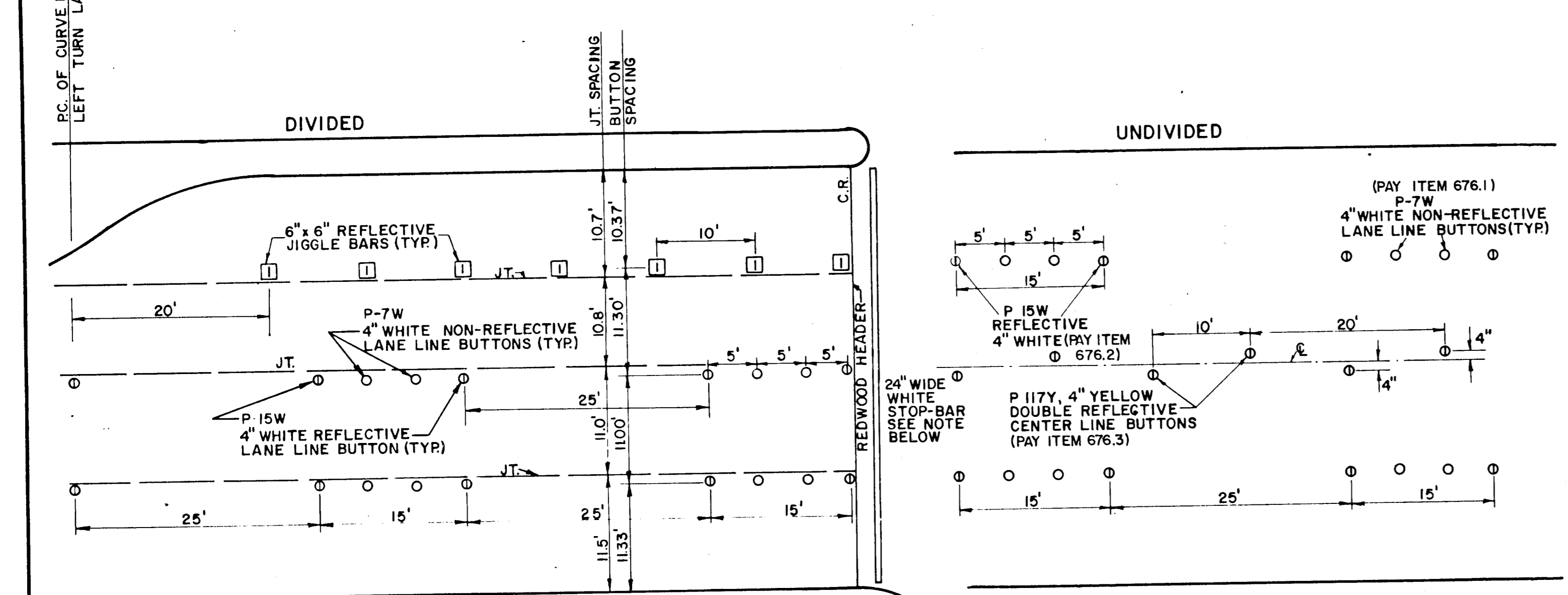
NOTES:
1. 3" PVC TO BE INSTALLED CONTINUOUS ACROSS INTERSECTION EXTENDING TO 2' BEHIND CURBS, TERMINATING IN PULL BOX. ON THE ENDS OF THE CONDUIT.
2. RED MARKER TAPE IS TO BE INSTALLED ON THE ENDS OF THE CONDUIT.
3. THE EXACT LOCATIONS WHERE THE CONDUIT CROSSES UNDER THE PAVING ARE TO BE CHISELED WITH AN "X" AND PAINTED WITH RED PAINT, ON THE CURB OR PAVING.
4. A NYLON CORD SHALL BE PLACED IN ALL CONDUIT UNDER PAVEMENT. THIS CORD SHALL EXTEND A MINIMUM OF 1' FROM THE END OF THE CONDUIT.



SPACING DIAGRAM FOR TRANSVERSE JOINTS



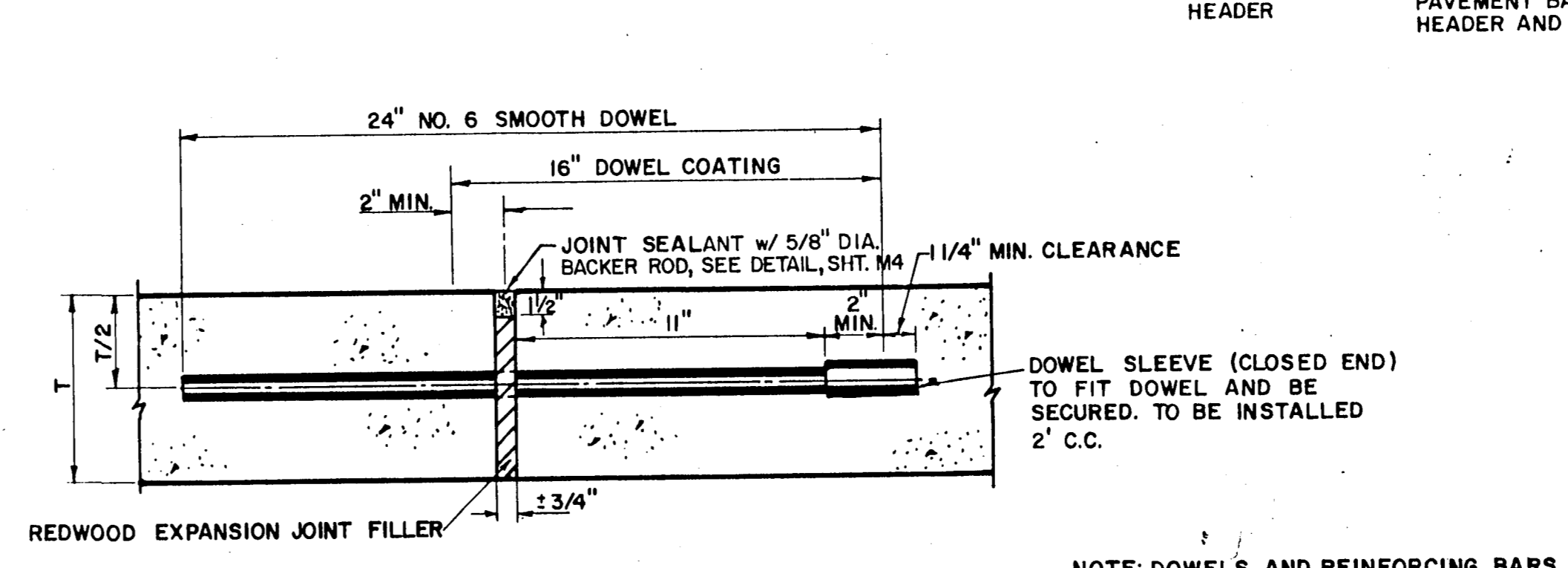
RAIL HEADER



NOTE: STOP-BAR TO BE STAMARK 3M BRAND NO. N360

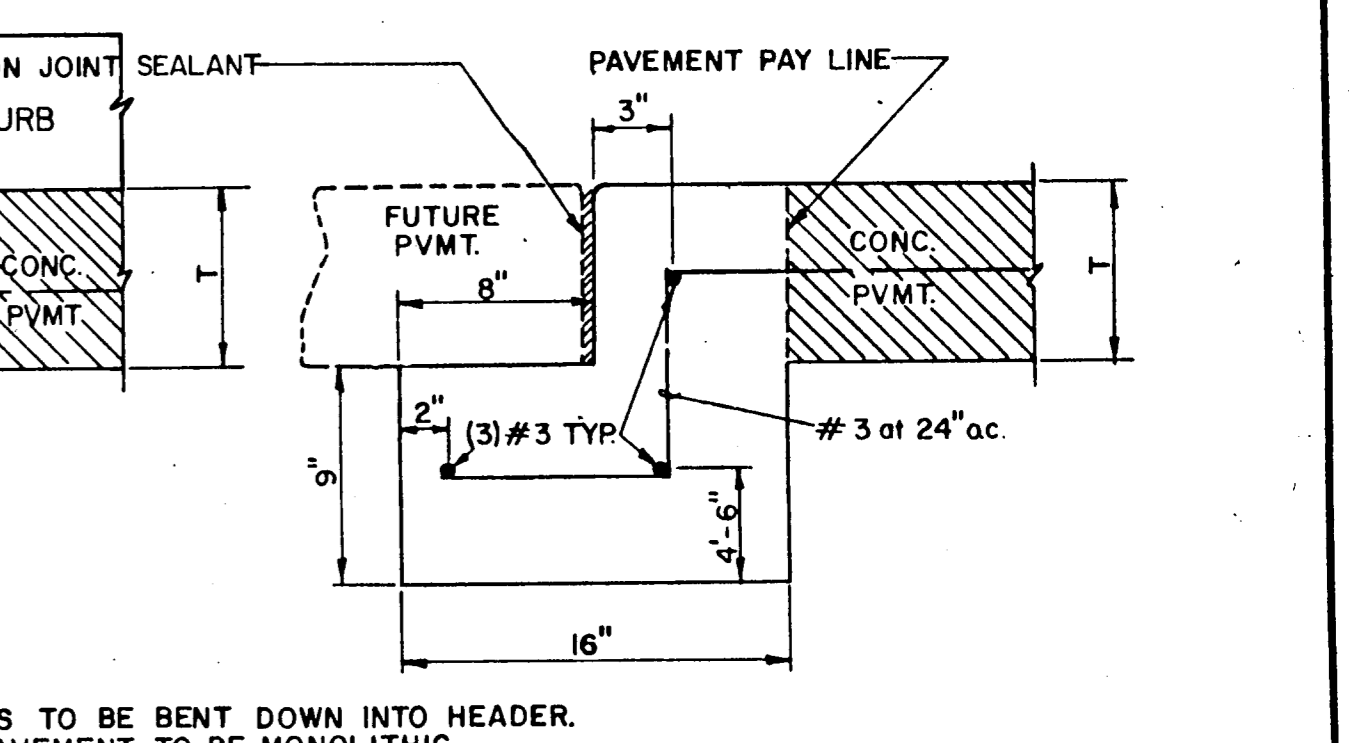
NOTE: BUTTONS TO BE INSTALLED OFF OF JOINTS, WITH MACHINE IMPLEMENTED 2 PART COMPONENT EPOXY

BUTTON DETAILS



TRANSVERSE EXPANSION JOINT

(SPACED 600 FT. MAXIMUM; LOCATE AT INTERSECTIONS)



STREET HEADER

TOWN OF ADDISON, TEXAS
DEPARTMENT OF ENGINEERING

STANDARD CONSTRUCTION DETAILS
PAVING

TURN LANES & JOINTS

Designed -	Drawn -	Date - AUGUST, 1991	Job No. - 90025-5
Approved -	Checked -	Scale -	Sheet D-10 OF