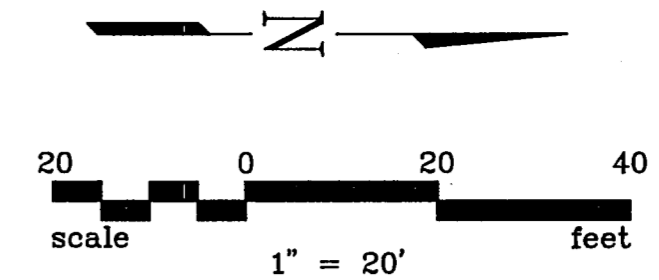
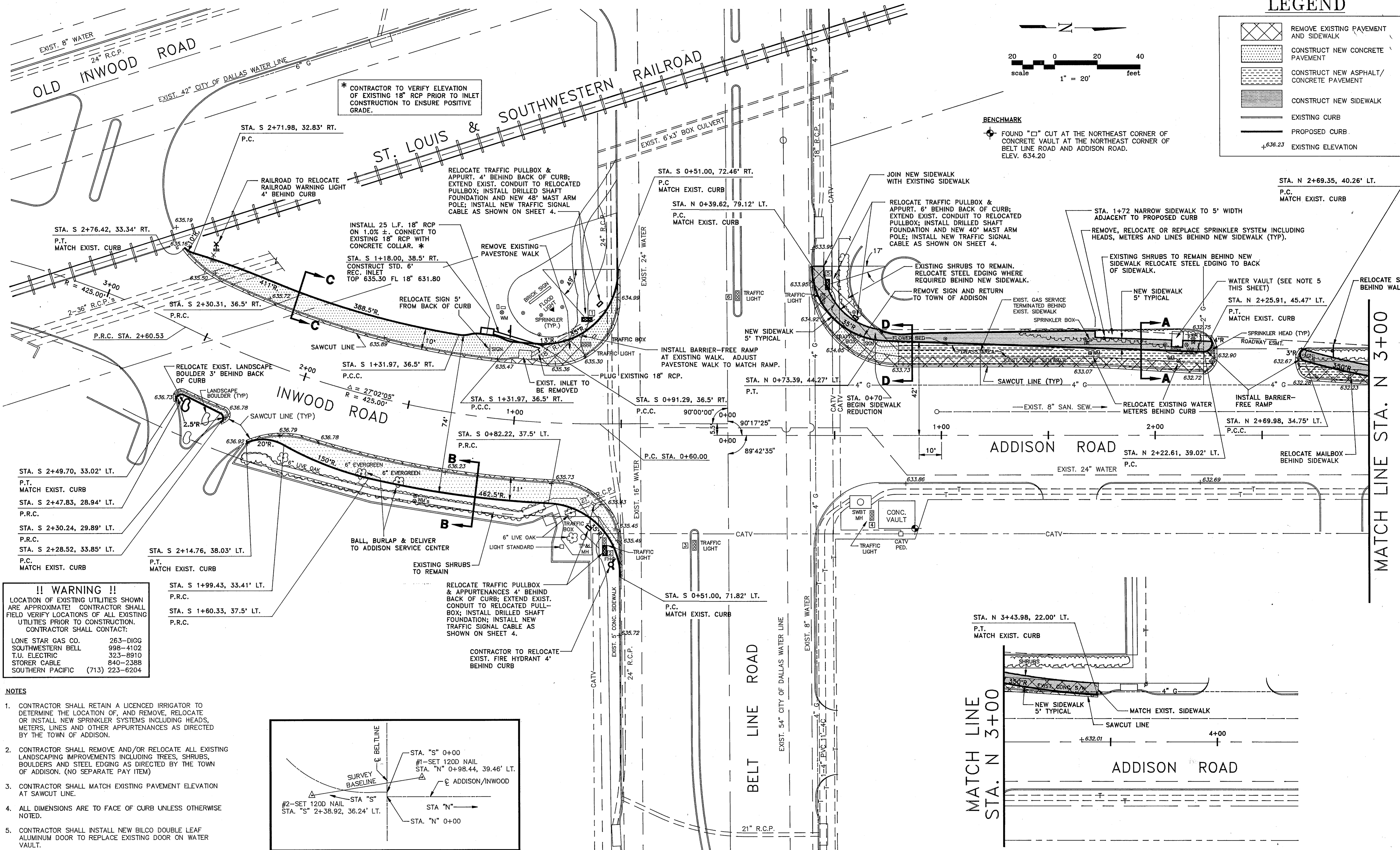


LEGEND

	REMOVE EXISTING PAVEMENT AND SIDEWALK
	CONSTRUCT NEW CONCRETE PAVEMENT
	CONSTRUCT NEW ASPHALT/CONCRETE PAVEMENT
	CONSTRUCT NEW SIDEWALK
	EXISTING CURB
	PROPOSED CURB
	EXISTING ELEVATION



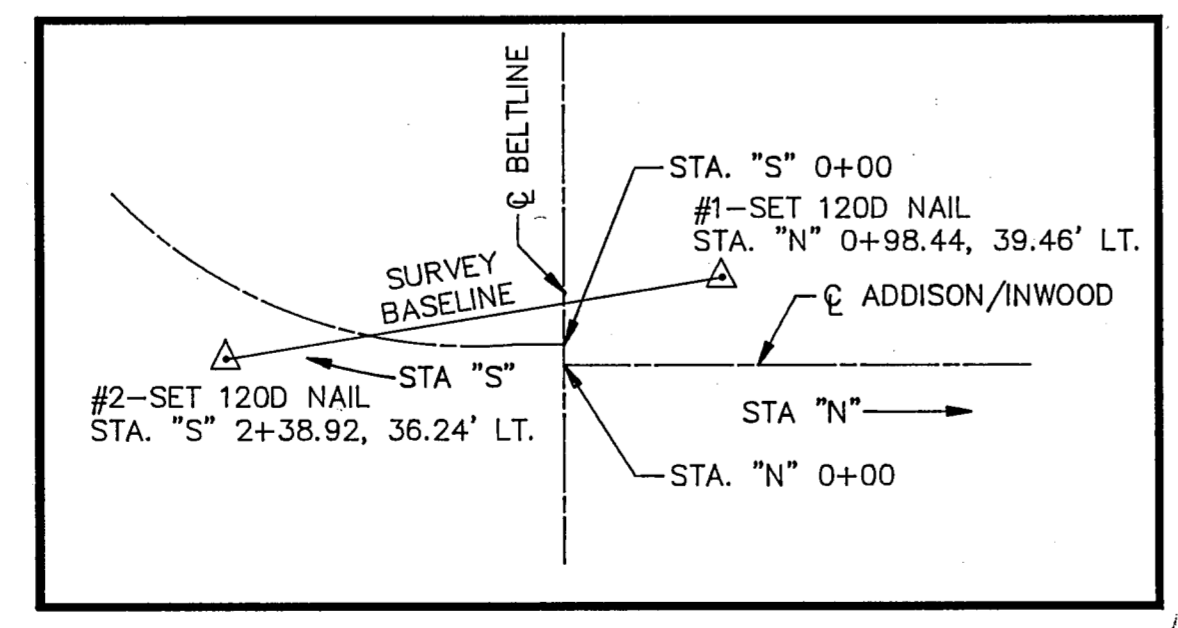
BENCHMARK
 FOUND "C" CUT AT THE NORTHEAST CORNER OF BELT LINE ROAD AND ADDISON ROAD. ELEV. 634.20



!! WARNING !!
 LOCATION OF EXISTING UTILITIES SHOWN ARE APPROXIMATE! CONTRACTOR SHALL FIELD VERIFY LOCATIONS OF ALL EXISTING UTILITIES PRIOR TO CONSTRUCTION. CONTRACTOR SHALL CONTACT:

LONE STAR GAS CO.	263-DIGG
SOUTHWESTERN BELL	998-4102
T.U. ELECTRIC	323-8910
STORER CABLE	840-2388
SOUTHERN PACIFIC	(713) 223-6204

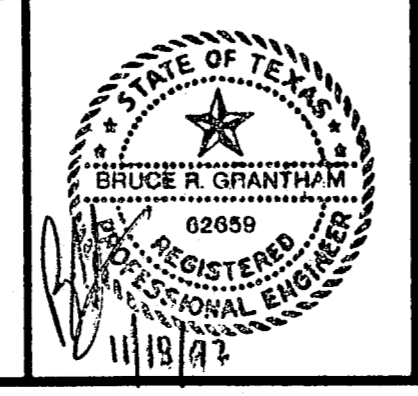
- NOTES**
- CONTRACTOR SHALL RETAIN A LICENCED IRRIGATOR TO DETERMINE THE LOCATION OF, AND REMOVE, RELOCATE OR INSTALL NEW SPRINKLER SYSTEMS INCLUDING HEADS, METERS, LINES AND OTHER APPURTENANCES AS DIRECTED BY THE TOWN OF ADDISON.
 - CONTRACTOR SHALL REMOVE AND/OR RELOCATE ALL EXISTING LANDSCAPING IMPROVEMENTS INCLUDING TREES, SHRUBS, BOULDERS AND STEEL EDGING AS DIRECTED BY THE TOWN OF ADDISON. (NO SEPARATE PAY ITEM)
 - CONTRACTOR SHALL MATCH EXISTING PAVEMENT ELEVATION AT SAWCUT LINE.
 - ALL DIMENSIONS ARE TO FACE OF CURB UNLESS OTHERWISE NOTED.
 - CONTRACTOR SHALL INSTALL NEW BILCO DOUBLE LEAF ALUMINUM DOOR TO REPLACE EXISTING DOOR ON WATER VAULT.
 - REFER TO SHEET 4 FOR ADDITIONAL TRAFFIC SIGNAL DETAILS AND RELOCATION NOTES.



TYPICAL BASIS FOR STATIONING
 NOT TO SCALE

NO.	REVISION	BY	DATE

DESIGNED BY: J. WALDBAUER
 DRAWN BY: EH&A
 CHECKED BY: B. GRANTHAM
 SCALE: 1" = 20'
 DATE: SEPTEMBER 1992
 FILE: \ADDISON\PROJECT\BELTADD



eh ESPEY, HUSTON & ASSOCIATES, INC.
 Engineering & Environmental Consultants
 13800 Montfort Drive Suite 230 Dallas, Texas 75240
 (214) 387-0771

PAVING PLAN
 INTERSECTION IMPROVEMENTS
 ADDISON ROAD AT BELT LINE ROAD
 for
 THE TOWN OF ADDISON

SHEET NO. 3
 OF 31 SHEETS
 JOB NO. 13921