

# CITY OF ADDISON DALLAS COUNTY, TEXAS

## CONSTRUCTION PLANS FOR:

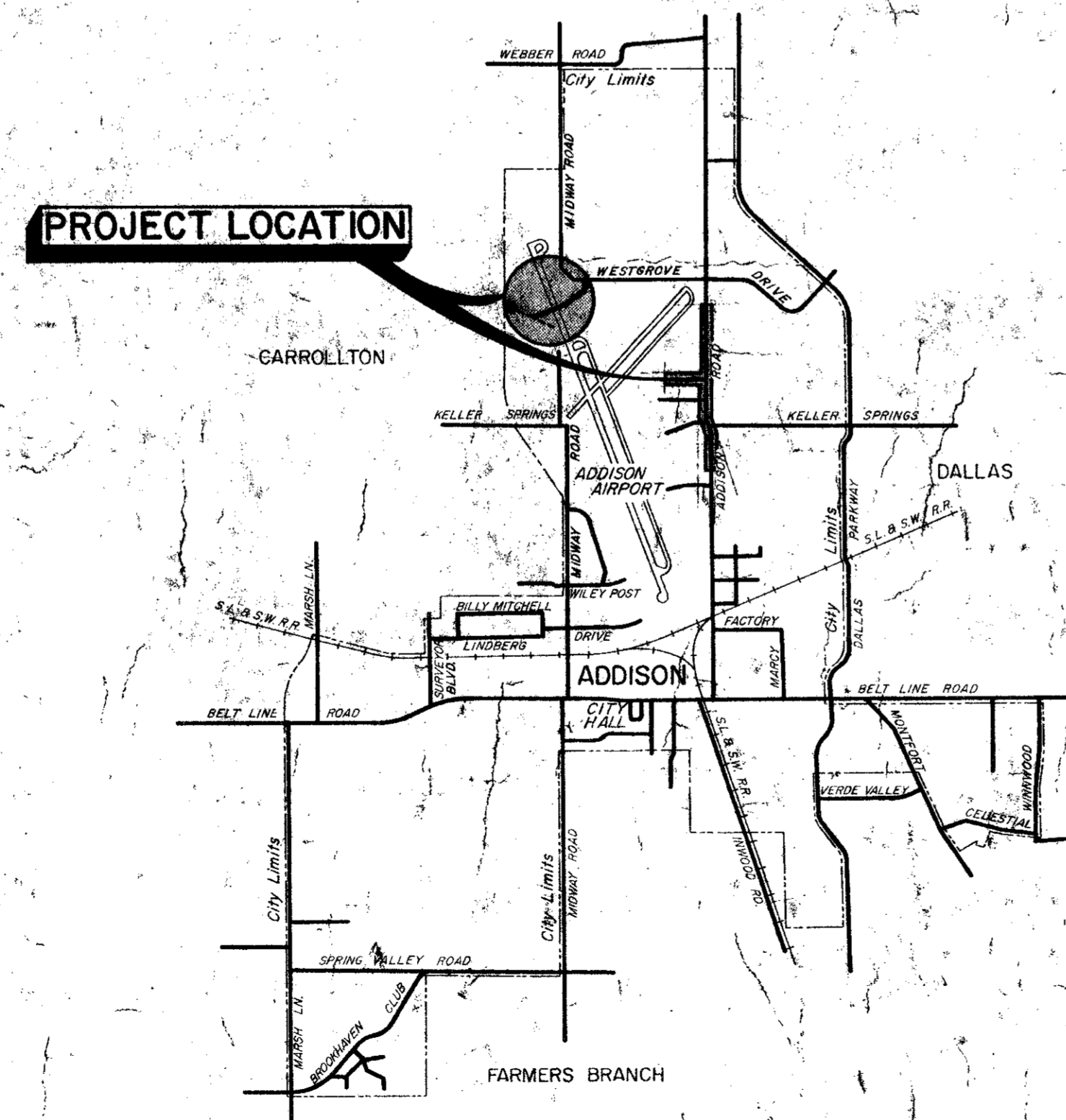
~~DOOLEY ROAD METERING STATION~~

AND

SEWER LINE EXTENSIONS

*Addison Rd*

*Keller Springs to Westgrove*

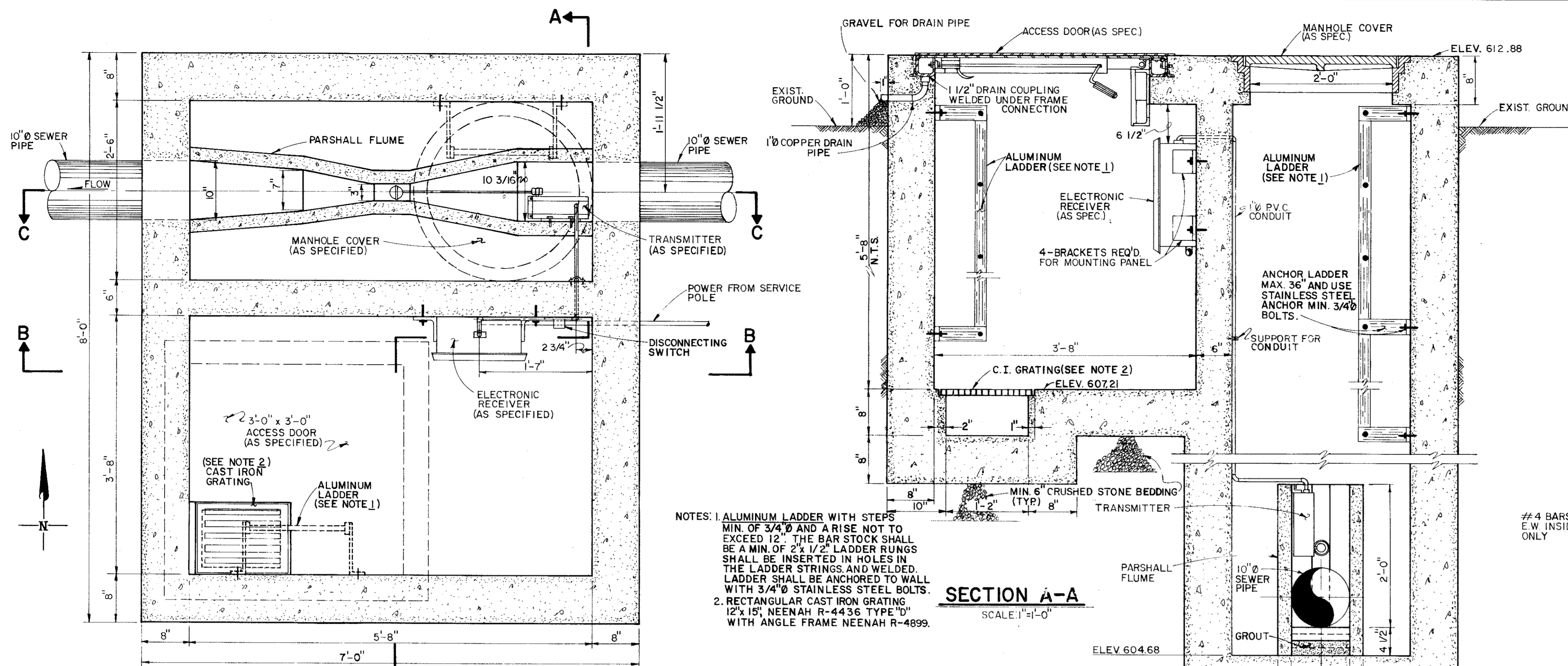


JERRY J. REDDING - MAYOR  
COUNCILMEN:

JOHN B. ALLEN  
RICHARD RODER  
WILLIAM F. SELLMAYER  
JERRY EASON  
TERRY ROBERTS

J. MILLIGAN - CITY ADMINISTRATOR

GINN & STACY, INC.  
CONSULTING ENGINEERS  
DALLAS, TEXAS  
1978



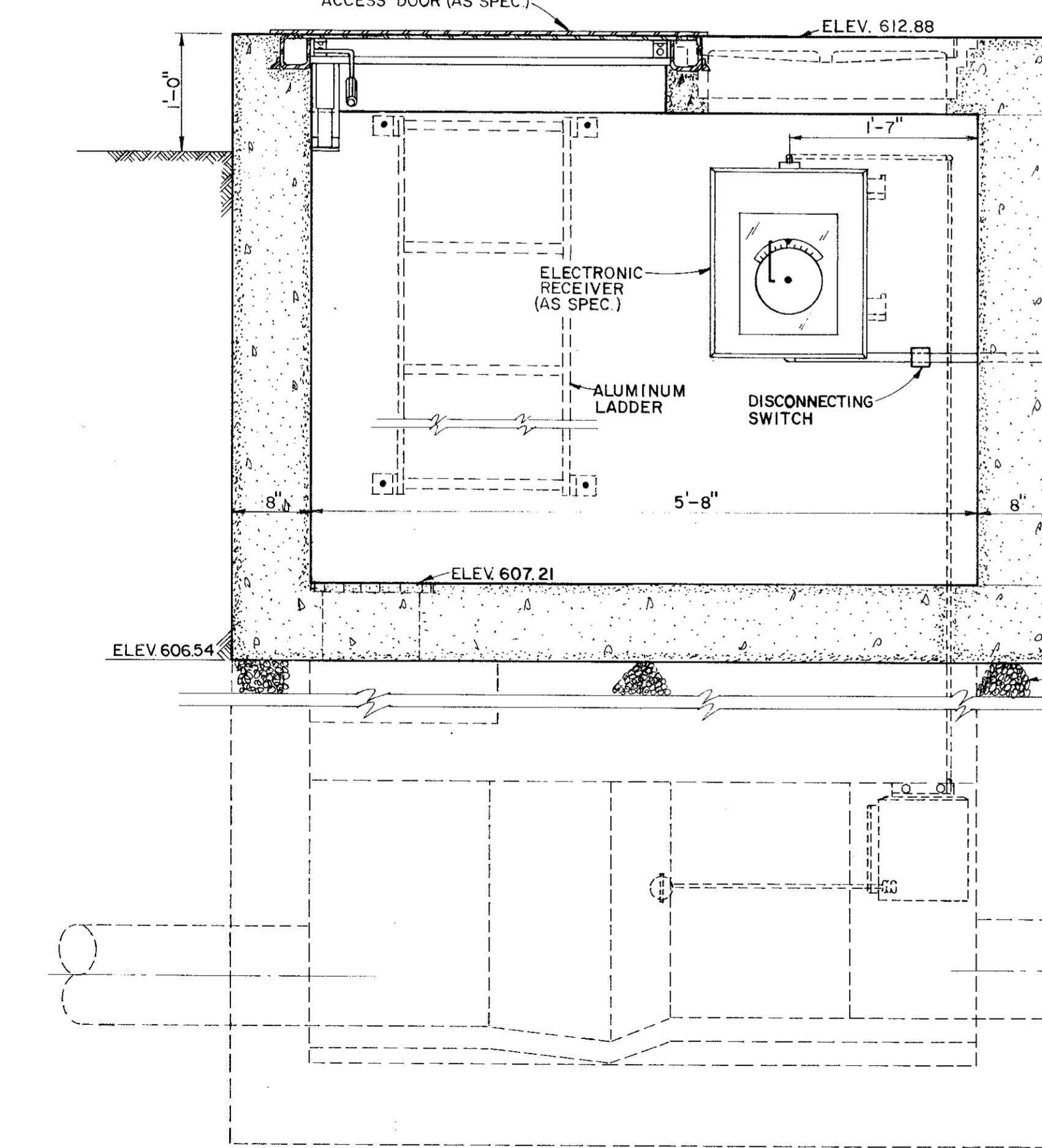
NOTES: 1. ALUMINUM LADDER WITH STEPS MIN. OF 3/4" AND A RISE NOT TO EXCEED 12". THE BAR STOCK SHALL BE A MIN. OF 2" x 1/2". LADDER RINGS SHALL BE INSERTED IN HOLES IN THE LADDER STRINGS AND WELDED. LADDER SHALL BE ANCHORED TO WALL WITH 3/4" STAINLESS STEEL BOLTS.  
 2. RECTANGULAR CAST IRON GRATING 12" x 15", NEENAH R-4436 TYPE "D" WITH ANGLE FRAME NEENAH R-4899.

**SECTION A-A**  
SCALE: 1"=1'-0"

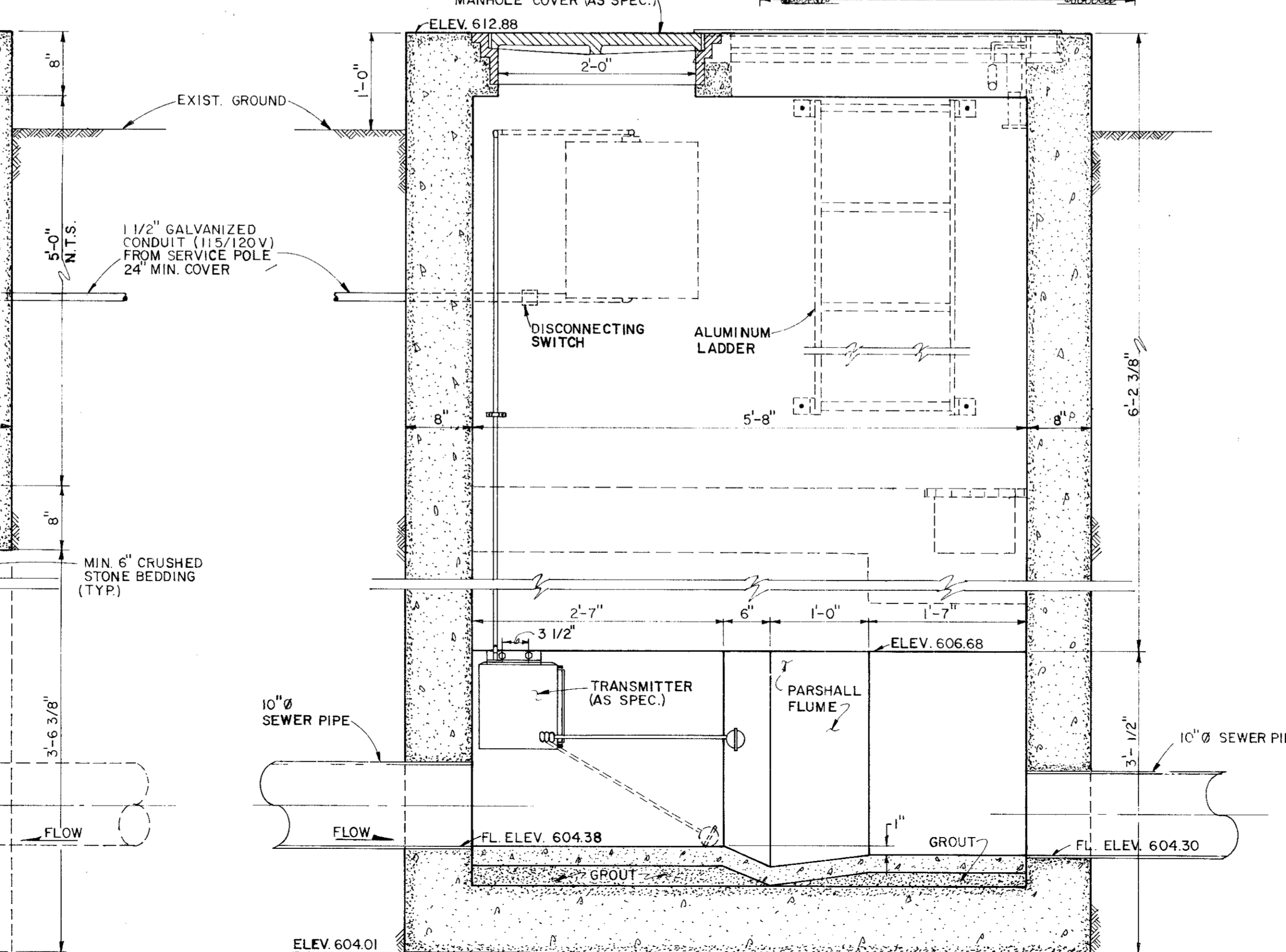


**PLAN**  
SCALE: 1"=1'-0"

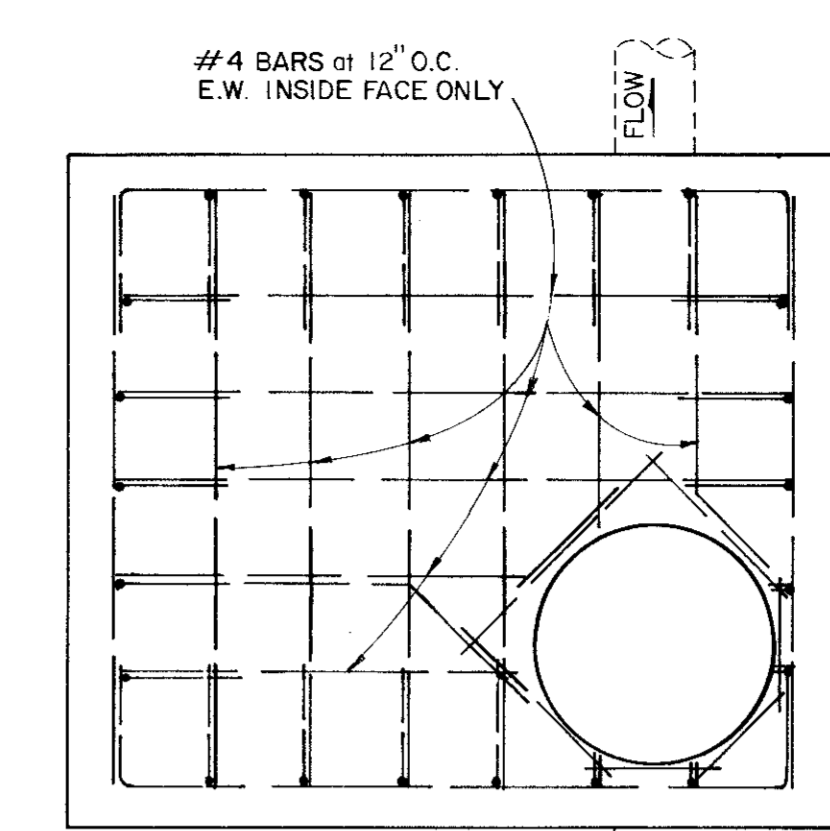
**PROPOSED FLUME HOUSING DETAILS**



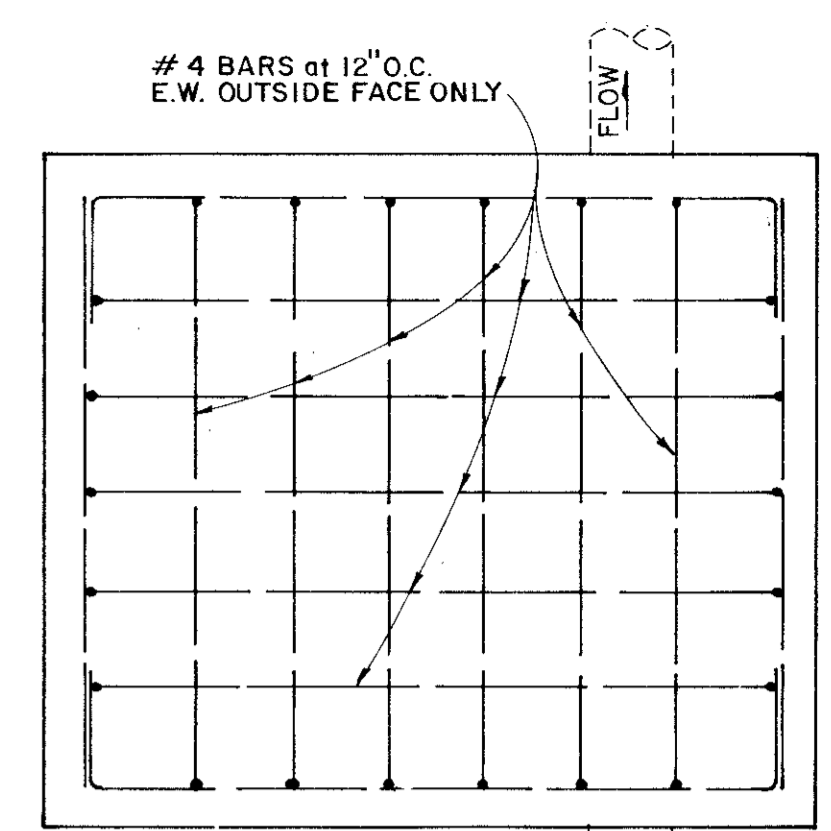
**SECTION B-B**  
SCALE: 1"=1'-0"



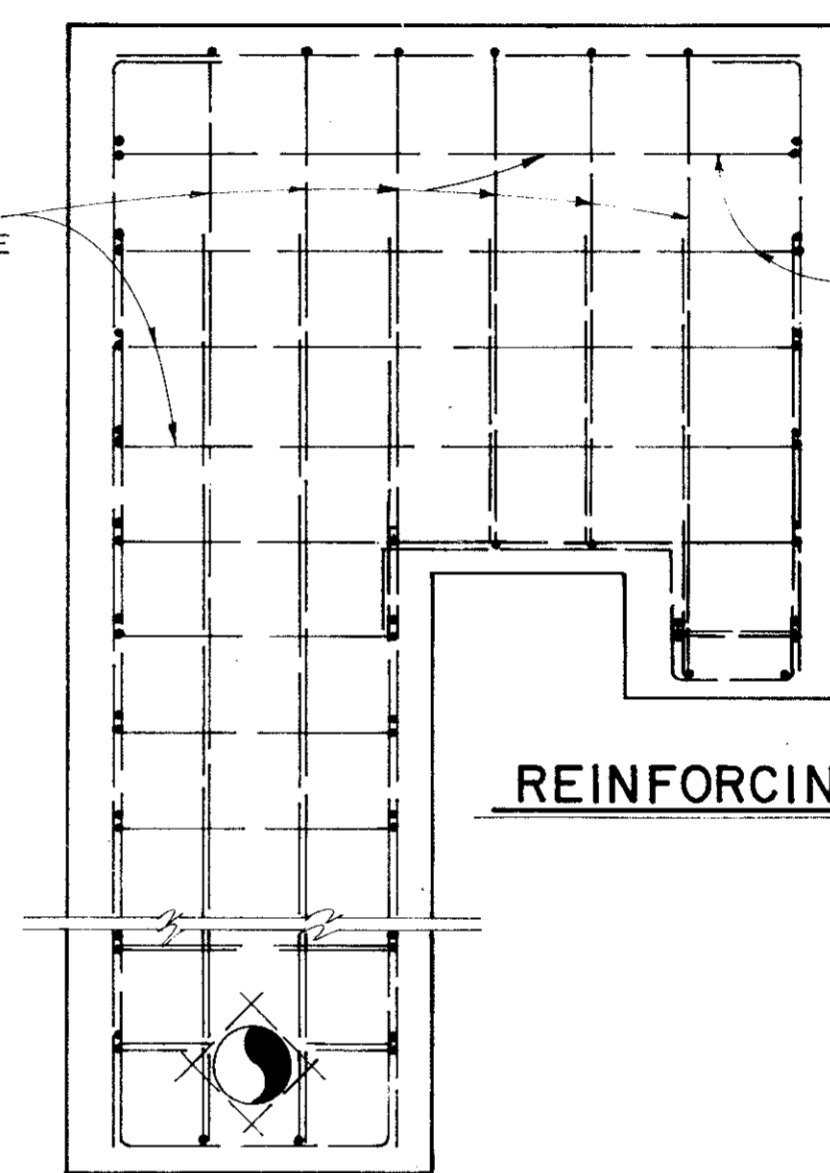
**SECTION C-C**  
SCALE: 1"=1'-0"



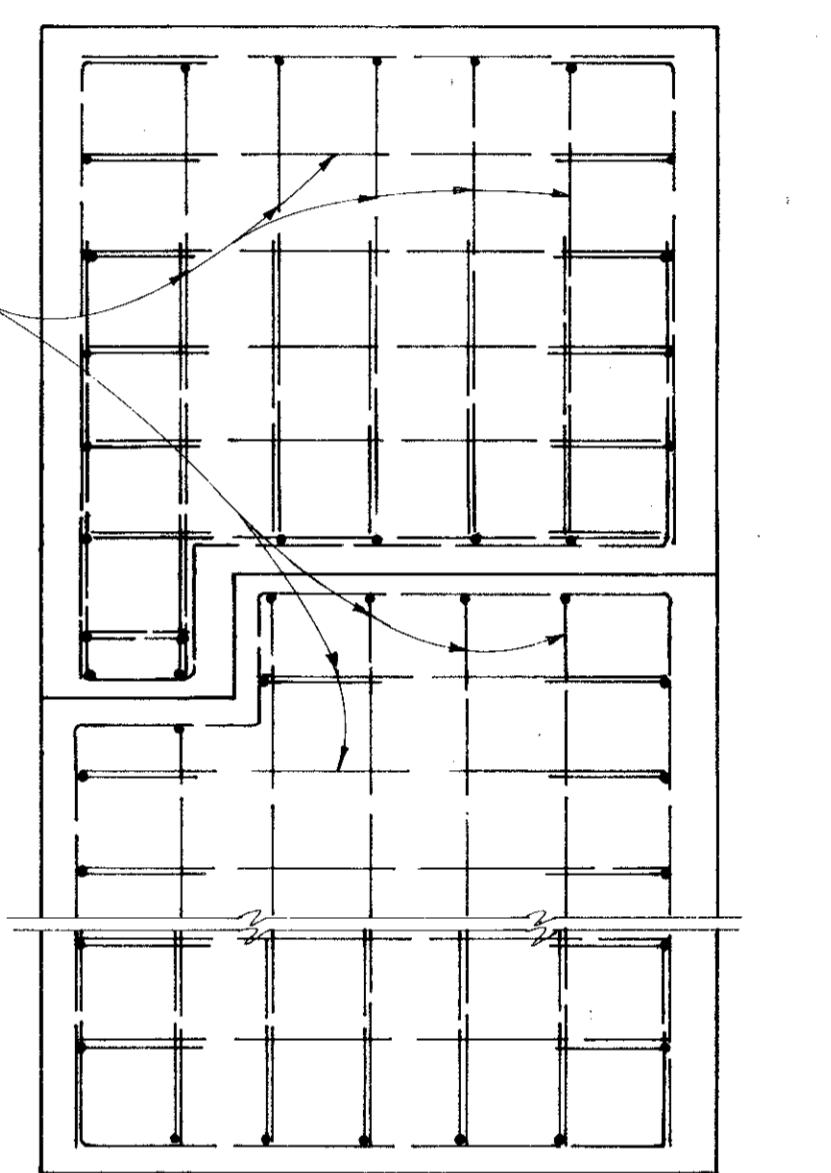
**TOP SLAB**  
SCALE: 1/2"=1'-0"



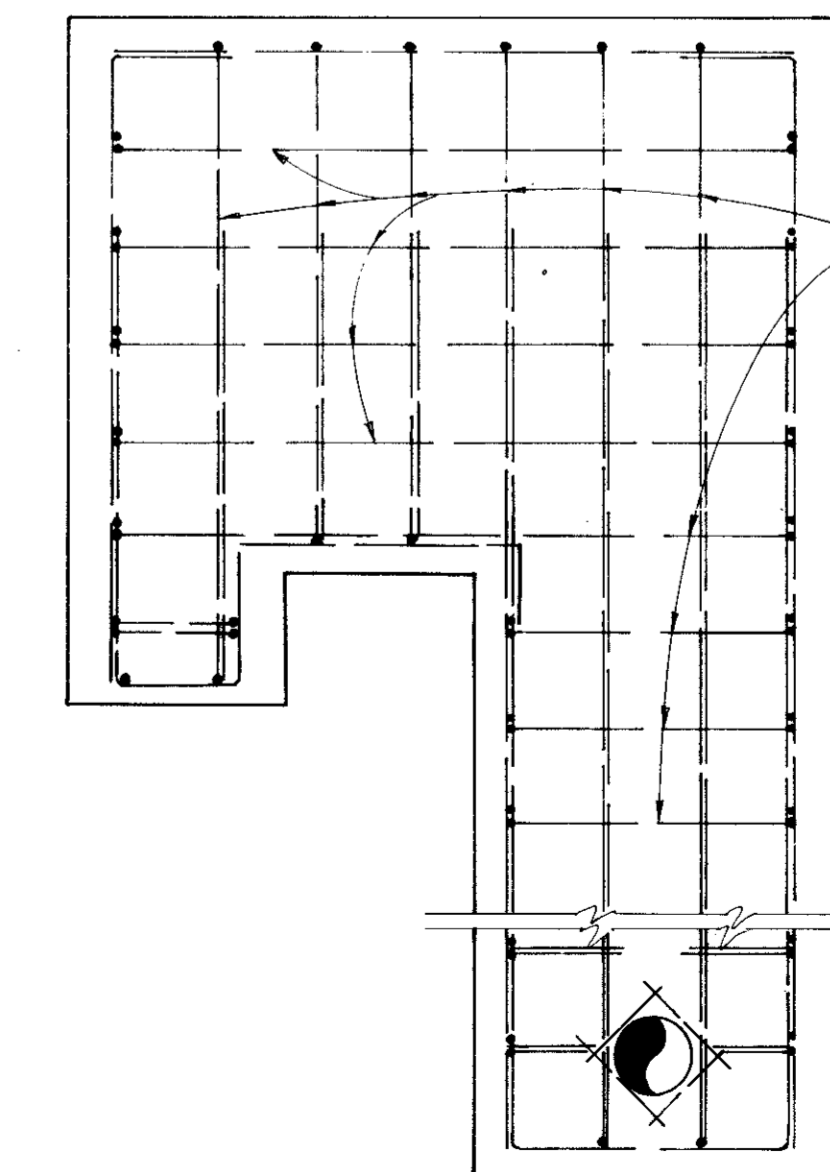
**BOTTOM SLAB**  
SCALE: 1/2"=1'-0"



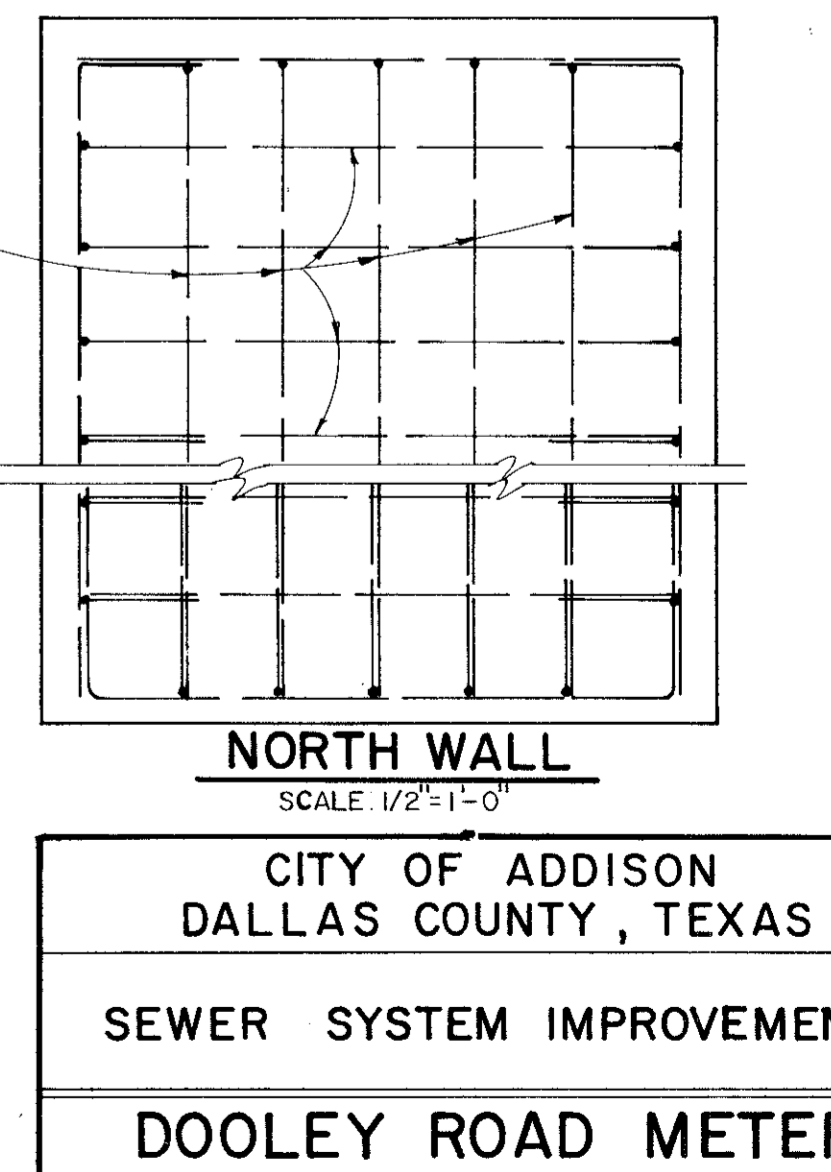
**WEST WALL**  
SCALE: 1/2"=1'-0"



**SOUTH WALL**  
SCALE: 1/2"=1'-0"



**EAST WALL**  
SCALE: 1/2"=1'-0"



**NORTH WALL**  
SCALE: 1/2"=1'-0"



CITY OF ADDISON  
 DALLAS COUNTY, TEXAS  
 SEWER SYSTEM IMPROVEMENTS  
**DOOLEY ROAD METER STATION**  
 GINN & STACY, INC.  
 CONSULTING ENGINEERS - DALLAS, TEXAS  
 DESIGNED BY: J.O.S. SCALE: AS SHOWN  
 DRAWN BY: G.L.H. DATE: 1978

- NOTES: 1. SEWER PIPE TO BE PVC - SDR 35.  
 2. WATER PIPE TO BE PVC - SDR 18.  
 3. CASING PIPE TO BE GALVANIZED CORRUGATED STEEL 16 GAGE AS PER TEXAS HIGHWAY DEPARTMENT SPECIFICATIONS ITEM 460.  
 4. EMBEDMENT FOR SEWER PIPE SHALL BE FULL SAND.

CAUTION: FAA BURIED CABLE  
 CALL 239-5565  
 PRIOR TO ANY DIGGING  
 CONTACT MR. MARTIN OR  
 MR. STRAITON

ESTIMATED QUANTITIES	
10" P.V.C. SEWER DITCH (0'-10')	493 L.F.
MANHOLE (8'-10')	1 EA.
MANHOLE (10'-12')	1 EA.
MANHOLE (12'-14')	1 EA.

DATE: \_\_\_\_\_  
 BY: \_\_\_\_\_  
 CHECKED: \_\_\_\_\_  
 SUPERVISOR: \_\_\_\_\_  
 NOTE BOOK: \_\_\_\_\_  
 ALIGNMENT CHECKED: \_\_\_\_\_  
 R.F. OF WAY CHECKED: \_\_\_\_\_  
 NO. \_\_\_\_\_



CITY OF ADDISON  
 DALLAS COUNTY, TEXAS

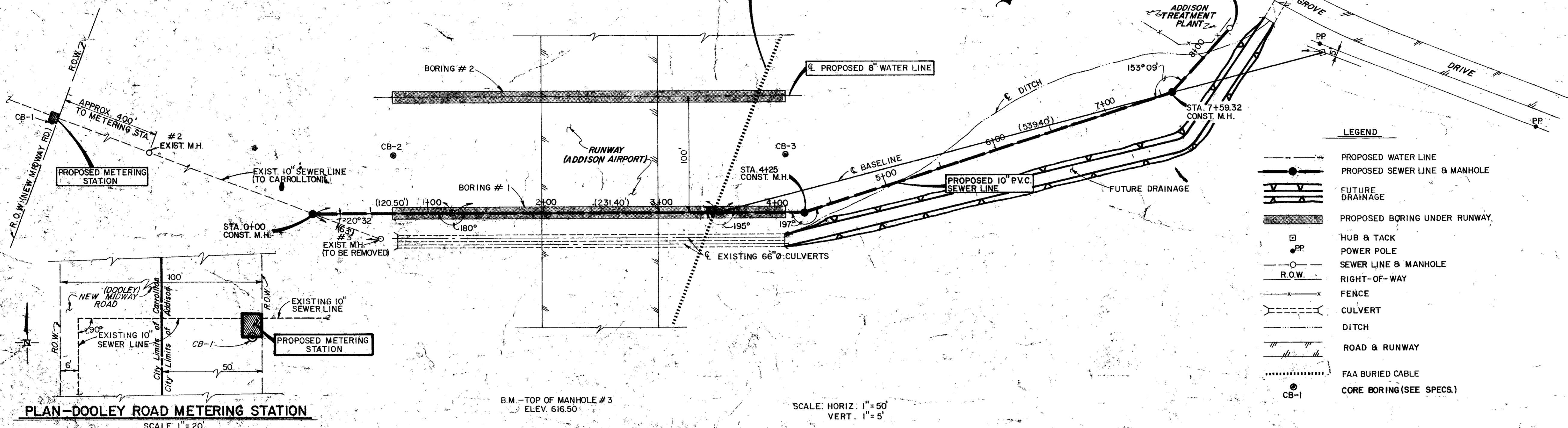
AIRPORT SEWER

PLAN AND PROFILE  
 STA. 0+00 TO STA. 833.32

GINN & STACY, INC.  
 CONSULTING ENGINEERS - DALLAS, TEXAS

DESIGNED BY: HWG SCALE: AS SHOWN  
 DRAWN BY: GLH DATE: APRIL, 1978

Sheet 2 of 9

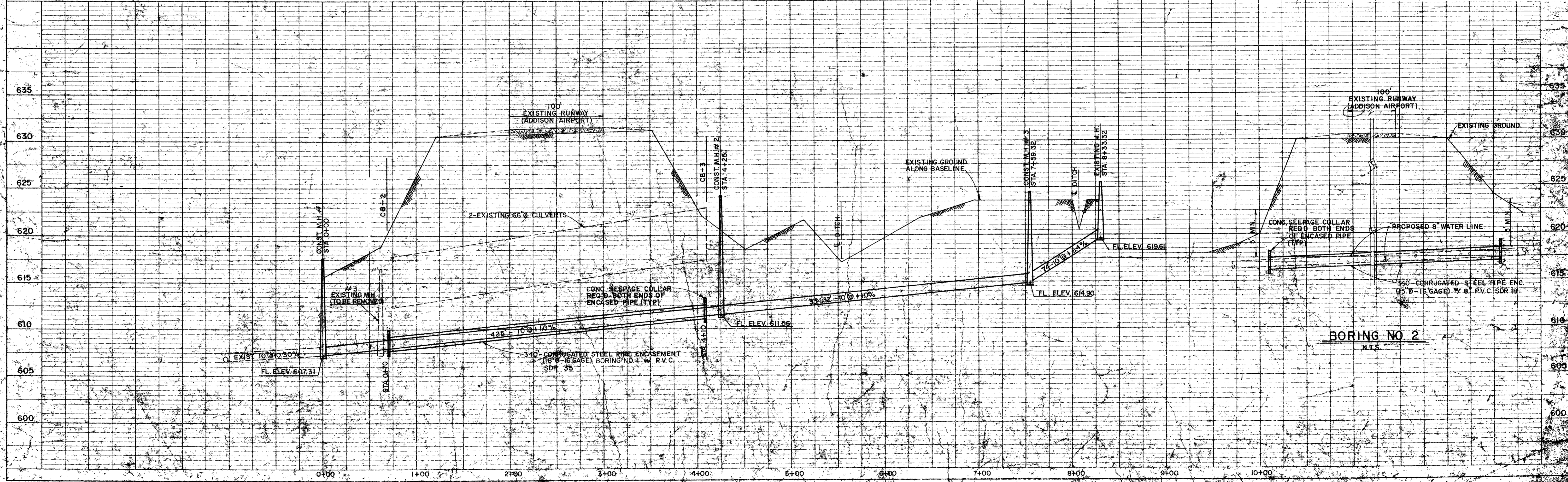


PLAN-DOOLEY ROAD METERING STATION  
 SCALE: 1" = 20'

B.M. - TOP OF MANHOLE #3  
 ELEV. 616.50

SCALE: HORIZ. 1" = 50'  
 VERT. 1" = 5'

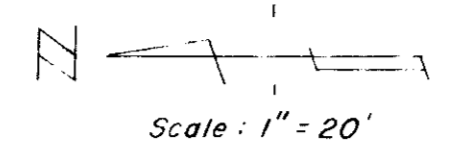
DATE: \_\_\_\_\_  
 BY: \_\_\_\_\_  
 CHECKED: \_\_\_\_\_  
 SUPERVISOR: \_\_\_\_\_  
 NOTE BOOK: \_\_\_\_\_  
 ELEVATION CHECKED: \_\_\_\_\_  
 PROFILE INDICATING CHECKED: \_\_\_\_\_  
 NO. \_\_\_\_\_



BORING NO. 2  
 N.T.S.

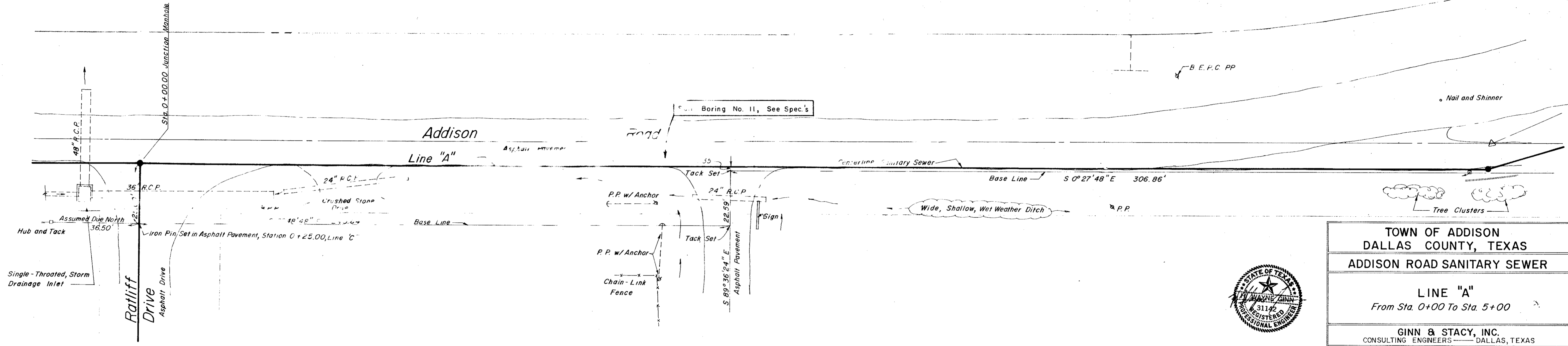
DATE: 6/78  
 BY: S.J.S.  
 SURVEYED: S.J.S.  
 PLOTTED: S.J.S.  
 CHECKED: S.J.S.  
 NOTE BOOK: S.J.S.  
 NO.:

DATE: 6/78  
 BY: S.J.S.  
 SURVEYED: S.J.S.  
 PLOTTED: S.J.S.  
 CHECKED: S.J.S.  
 NOTE BOOK: S.J.S.  
 NO.:



- LEGEND**
- Hub & Tack
  - CORP Monument
  - PP Power Pole
  - WM Water Meter
  - WV Water Valve
  - WH Water Hydrant
  - FH Fire Hydrant
  - GM Gas Meter
  - T Telephone Box
  - Guy Wire
  - IP Iron Pin
  - MB Mail Box
  - Water Line
  - Gas Line
  - Underground Telephone

ESTIMATED QUANTITIES	
8" P.V.C. SEWER (12'-14')	300 L.F.
8" P.V.C. SEWER (14'-16')	260 L.F.
MANHOLE (12-14)	1 EA.
MANHOLE (14-16)	1 EA.
6" P.V.C. SEWER LATERALS	50 L.F.

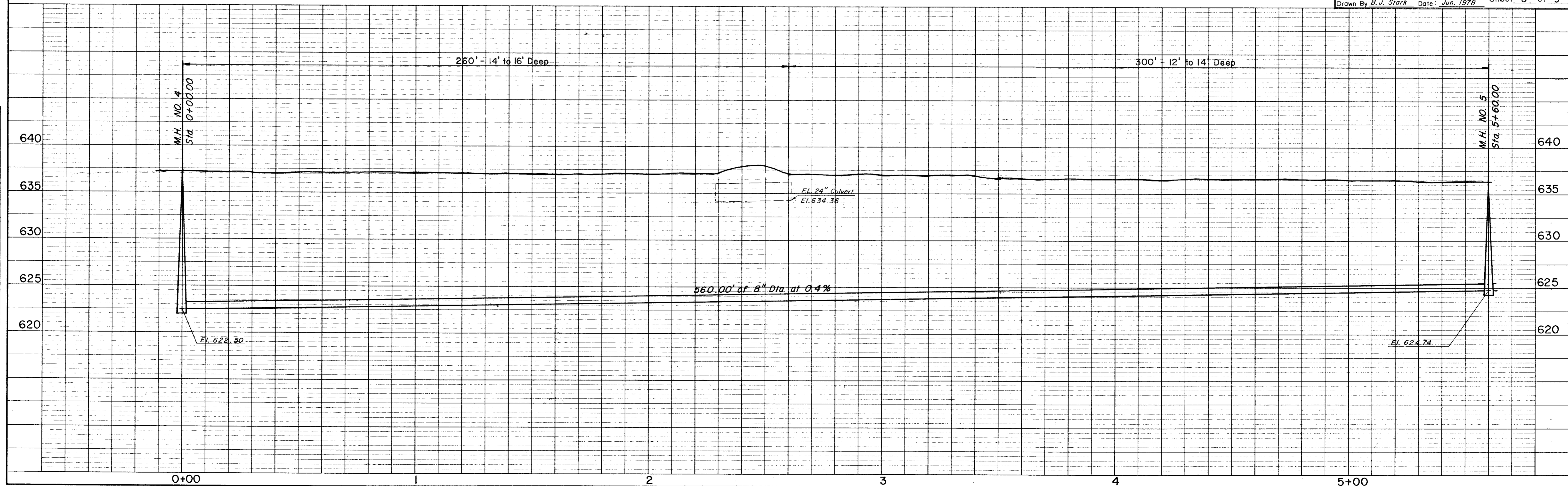


**TOWN OF ADDISON  
 DALLAS COUNTY, TEXAS  
 ADDISON ROAD SANITARY SEWER**

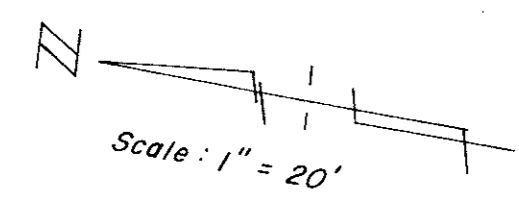
**LINE "A"**  
 From Sta. 0+00 To Sta. 5+00

**GINN & STACY, INC.**  
 CONSULTING ENGINEERS — DALLAS, TEXAS

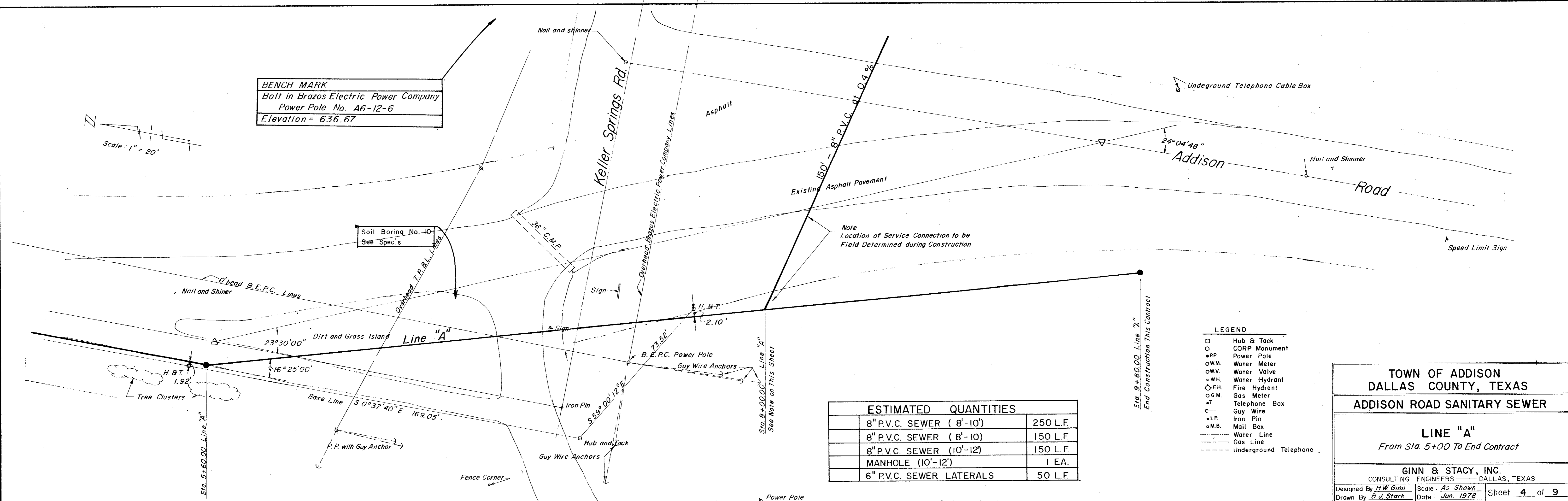
Designed By *H.W. Ginn* Scale: *As Shown* Sheet **3** of **9**  
 Drawn By *B.J. Stark* Date: *Jun. 1978*



**BENCH MARK**  
 Bolt in Brazos Electric Power Company  
 Power Pole No. A6-12-6  
 Elevation = 636.67



**PLAN**  
 SURVEYED BY: [Blank]  
 ROUTED BY: [Blank]  
 CHECKED BY: [Blank]  
 DATE: [Blank]  
 NO. OF WAY CHECKED: [Blank]  
 NO. OF STRUCTURE INDICATIONS CHECKED: [Blank]



ESTIMATED QUANTITIES	
8" P.V.C. SEWER ( 8'-10')	250 L.F.
8" P.V.C. SEWER ( 8'-10)	150 L.F.
8" P.V.C. SEWER (10'-12')	150 L.F.
MANHOLE (10'-12')	1 EA.
6" P.V.C. SEWER LATERALS	50 L.F.

- LEGEND**
- Hub & Tack
  - CORP Monument
  - PP Power Pole
  - W.M. Water Meter
  - W.V. Water Valve
  - W.H. Water Hydrant
  - F.H. Fire Hydrant
  - G.M. Gas Meter
  - ⊕ Telephone Box
  - ⊕ Guy Wire
  - ⊕ Mail Box
  - ⊕ M.B. Mail Box
  - Water Line
  - Gas Line
  - - - - - Underground Telephone

**TOWN OF ADDISON  
 DALLAS COUNTY, TEXAS**

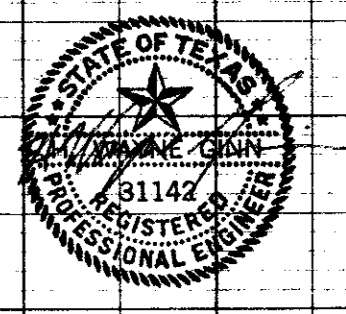
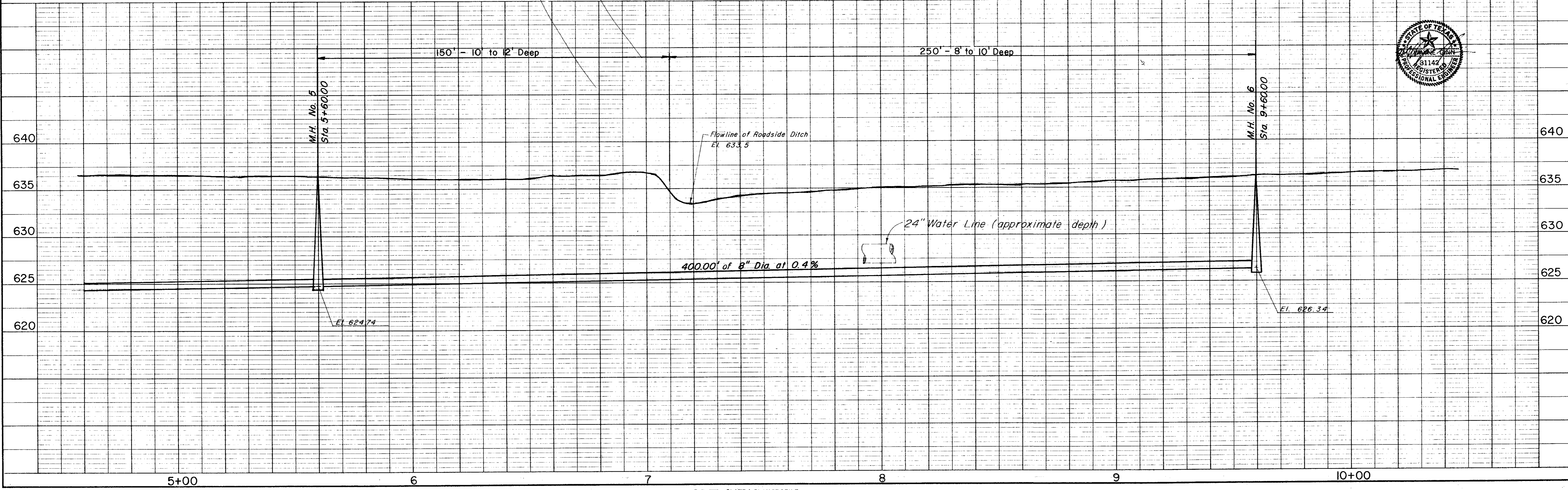
**ADDISON ROAD SANITARY SEWER**

**LINE "A"**  
 From Sta. 5+00 To End Contract

GINN & STACY, INC.  
 CONSULTING ENGINEERS — DALLAS, TEXAS

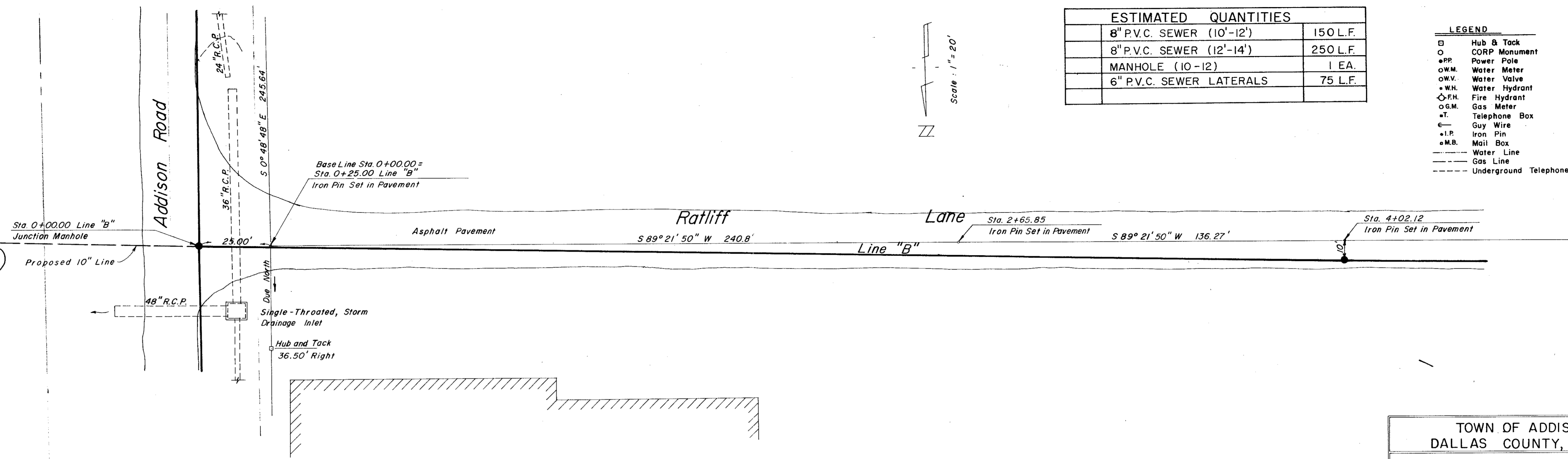
Designed By *H.W. Ginn* Scale: *As Shown* Sheet **4** of **9**  
 Drawn By *B.J. Stark* Date: *Jun. 1978*

**PROFILE**  
 SURVEYED BY: [Blank]  
 ROUTED BY: [Blank]  
 CHECKED BY: [Blank]  
 DATE: [Blank]  
 NO. OF WAY CHECKED: [Blank]  
 NO. OF STRUCTURE INDICATIONS CHECKED: [Blank]



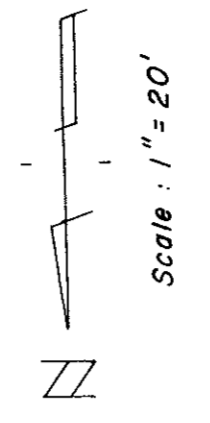
DATE \_\_\_\_\_ BY \_\_\_\_\_  
 SURVEYED \_\_\_\_\_  
 NOTED \_\_\_\_\_  
 PLAN NOTE BOOK No. \_\_\_\_\_  
 CHECKED \_\_\_\_\_  
 FT. OF WAY CHECKED \_\_\_\_\_

Note: Manhole No. 1 to be Field Located on Proposed 10" Line



ESTIMATED QUANTITIES	
8" P.V.C. SEWER (10'-12')	150 L.F.
8" P.V.C. SEWER (12'-14')	250 L.F.
MANHOLE (10-12)	1 EA.
6" P.V.C. SEWER LATERALS	75 L.F.

- LEGEND**
- Hub & Tack
  - CORP Monument
  - P.P. Power Pole
  - W.M. Water Meter
  - W.V. Water Valve
  - W.H. Water Hydrant
  - F.H. Fire Hydrant
  - G.M. Gas Meter
  - T. Telephone Box
  - Guy Wire
  - + I.P. Iron Pin
  - M.B. Mail Box
  - Water Line
  - Gas Line
  - Underground Telephone



TOWN OF ADDISON  
 DALLAS COUNTY, TEXAS  
 ADDISON ROAD SANITARY SEWER  
 LINE "B"  
 From Sta. 0+00 To Sta. 4+00

GINN & STACY, INC.  
 CONSULTING ENGINEERS DALLAS, TEXAS  
 Designed By H.W. Ginn Scale: As Shown  
 Drawn By B.J. Stark Date: Jun. 1978 Sheet 5 of 9

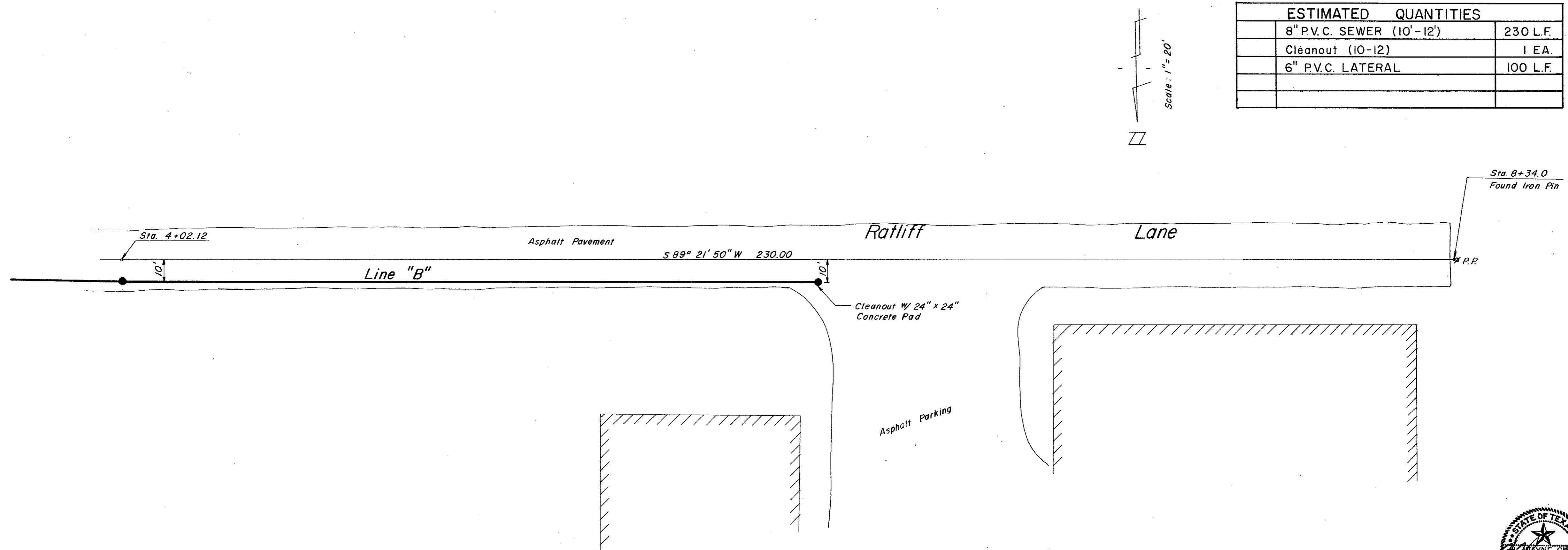
DATE \_\_\_\_\_ BY \_\_\_\_\_  
 SURVEYED \_\_\_\_\_  
 NOTED \_\_\_\_\_  
 PROFILE NOTE BOOK No. \_\_\_\_\_  
 CHECKED \_\_\_\_\_  
 FEET OF WAY CHECKED \_\_\_\_\_



PLAN  
 SURVEYED BY \_\_\_\_\_ DATE \_\_\_\_\_  
 NOTE BOOK NO. \_\_\_\_\_  
 ALIGNED BY \_\_\_\_\_  
 RT. OF WAY CHECKED BY \_\_\_\_\_

ESTIMATED QUANTITIES	
8" P.V.C. SEWER (10'-12')	230 L.F.
Cleanout (10-12)	1 EA.
6" P.V.C. LATERAL	100 L.F.

- LEGEND
- Hub & Tack
  - CORP Monument
  - P.P. Power Pole
  - W.M. Water Meter
  - W.V. Water Valve
  - W.H. Water Hydrant
  - F.H. Fire Hydrant
  - G.M. Gas Meter
  - T. Telephone Box
  - G.W. Guy Wire
  - I.P. Iron Pin
  - M.B. Mail Box
  - Water Line
  - Gas Line
  - - - - - Underground Telephone



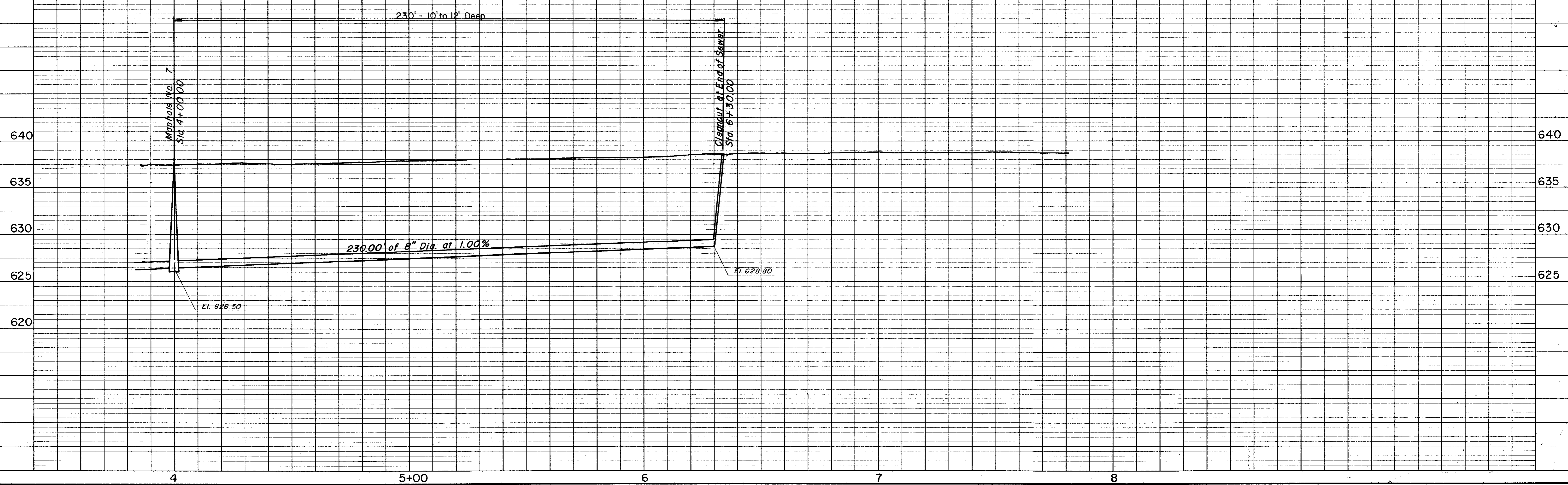
TOWN OF ADDISON  
 DALLAS COUNTY, TEXAS  
 ADDISON ROAD SANITARY SEWER

LINE "B"  
 From Sta. 4+00 To End Contract

GINN & STACY, INC.  
 CONSULTING ENGINEERS - DALLAS, TEXAS

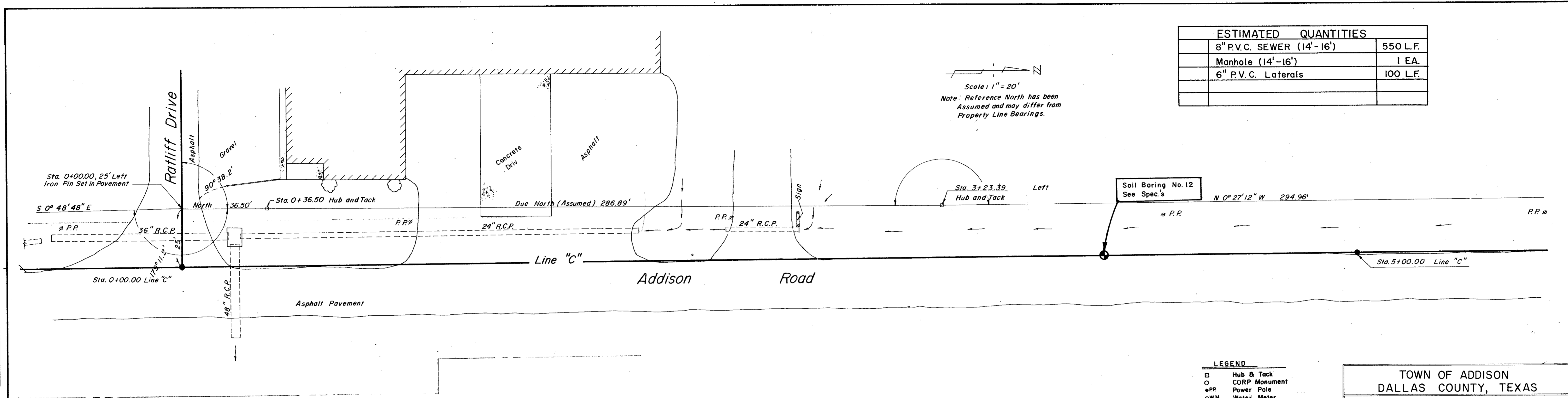
Designed By *H.W. Ginn* Scale: *As Shown*  
 Drawn By *B.J. Stark* Date: *Jun. 1978* Sheet **6** of **9**

PROFILE  
 SURVEYED BY \_\_\_\_\_ DATE \_\_\_\_\_  
 NOTE BOOK NO. \_\_\_\_\_  
 GRADE CHECKED BY \_\_\_\_\_  
 STRUCTURAL NOTATIONS CHECKED BY \_\_\_\_\_



DATE \_\_\_\_\_ BY \_\_\_\_\_  
 SURVEYED \_\_\_\_\_  
 PLANNED \_\_\_\_\_  
 CHECKED \_\_\_\_\_  
 NO. \_\_\_\_\_

DATE \_\_\_\_\_ BY \_\_\_\_\_  
 SURVEYED \_\_\_\_\_  
 PLANNED \_\_\_\_\_  
 CHECKED \_\_\_\_\_  
 NO. \_\_\_\_\_



ESTIMATED QUANTITIES	
8" P.V.C. SEWER (14'-16')	550 L.F.
Manhole (14'-16')	1 EA.
6" P.V.C. Laterals	100 L.F.

- LEGEND**
- Hub & Tack
  - CORP Monument
  - PP Power Pole
  - W.M. Water Meter
  - W.V. Water Valve
  - W.H. Water Hydrant
  - F.H. Fire Hydrant
  - G.M. Gas Meter
  - T. Telephone Box
  - Guy Wire
  - I.P. Iron Pin
  - M.B. Mail Box
  - Water Line
  - Gas Line
  - Underground Telephone

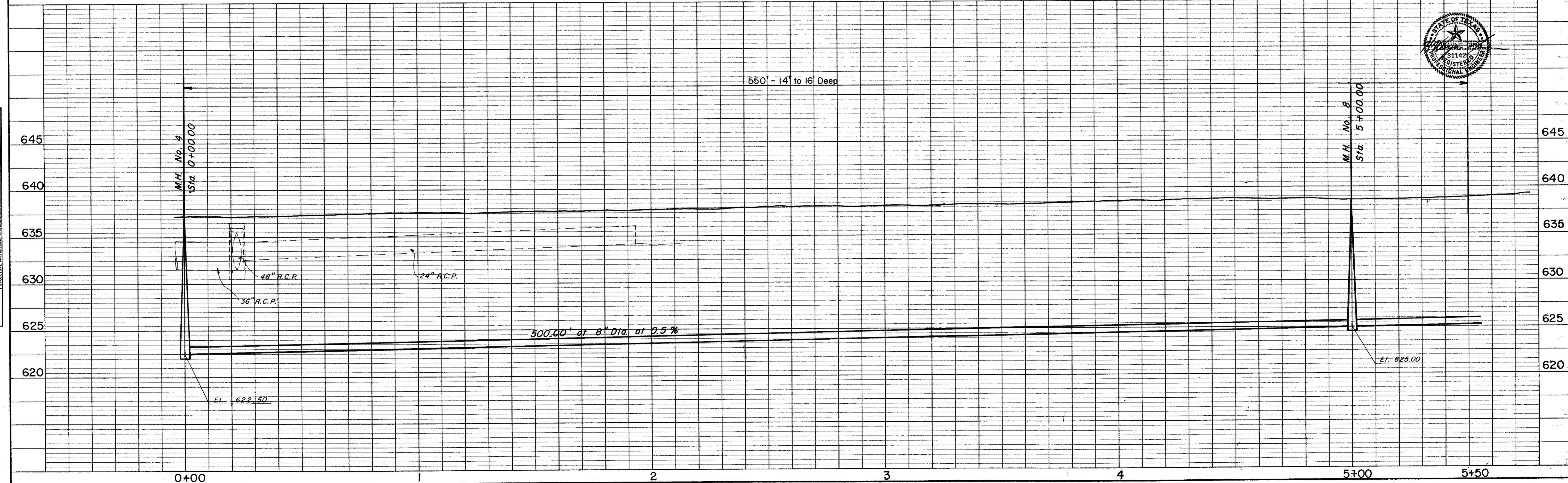
**TOWN OF ADDISON**  
**DALLAS COUNTY, TEXAS**

**ADDISON ROAD SANITARY SEWER**

**LINE "C"**  
 From Sta. 0+00 To Sta. 5+50

**GINN & STACY, INC.**  
 CONSULTING ENGINEERS — DALLAS, TEXAS

Designed By *H.W. Ginn* Scale: *As Shown*  
 Drawn By *B.J. Stark* Date: *Jun. 1978* Sheet **7** of **9**



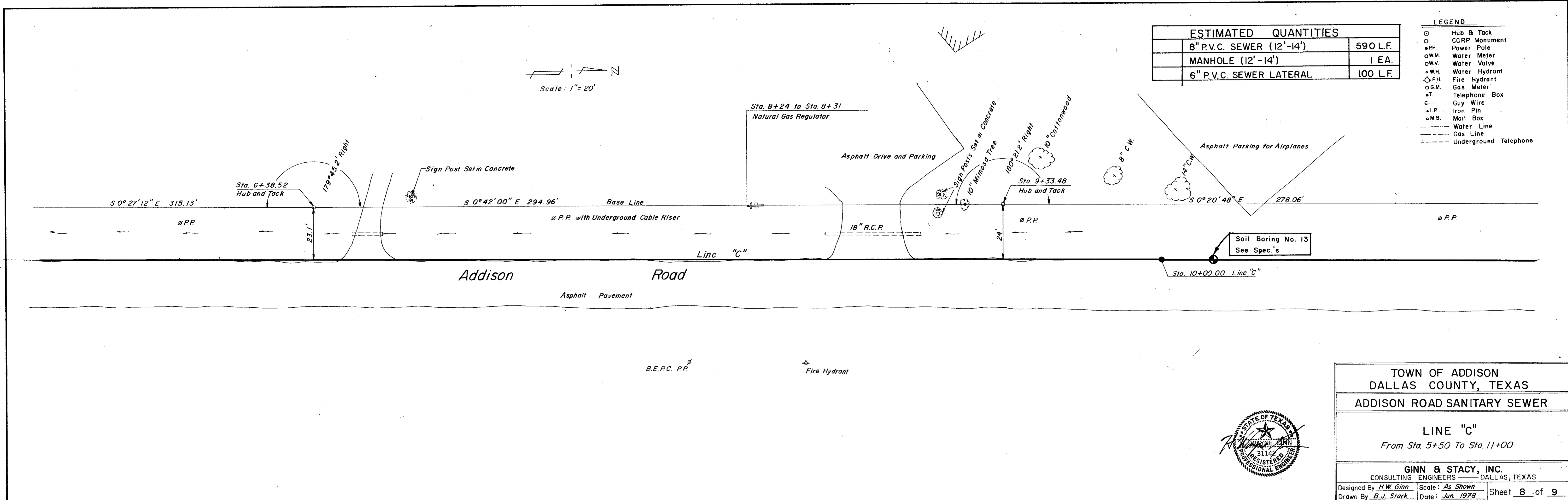


DATE \_\_\_\_\_  
 BY \_\_\_\_\_  
 SURVAYED \_\_\_\_\_  
 NOTE BOOK \_\_\_\_\_  
 ALIGNED CHECKED \_\_\_\_\_  
 BY OF WAY CHECKED \_\_\_\_\_  
 No. \_\_\_\_\_

DATE \_\_\_\_\_  
 BY \_\_\_\_\_  
 SURVAYED \_\_\_\_\_  
 NOTE BOOK \_\_\_\_\_  
 ALIGNED CHECKED \_\_\_\_\_  
 BY OF WAY CHECKED \_\_\_\_\_  
 No. \_\_\_\_\_

ESTIMATED QUANTITIES	
8" P.V.C. SEWER (12'-14')	590 L.F.
MANHOLE (12'-14')	1 EA.
6" P.V.C. SEWER LATERAL	100 L.F.

- LEGEND**
- Hub & Tack
  - CORP Monument
  - P.P. Power Pole
  - W.V. Water Valve
  - W.H. Water Hydrant
  - F.H. Fire Hydrant
  - G.M. Gas Meter
  - T. Telephone Box
  - Guy Wire
  - I.P. Iron Pin
  - M.B. Mail Box
  - Water Line
  - Gas Line
  - Underground Telephone

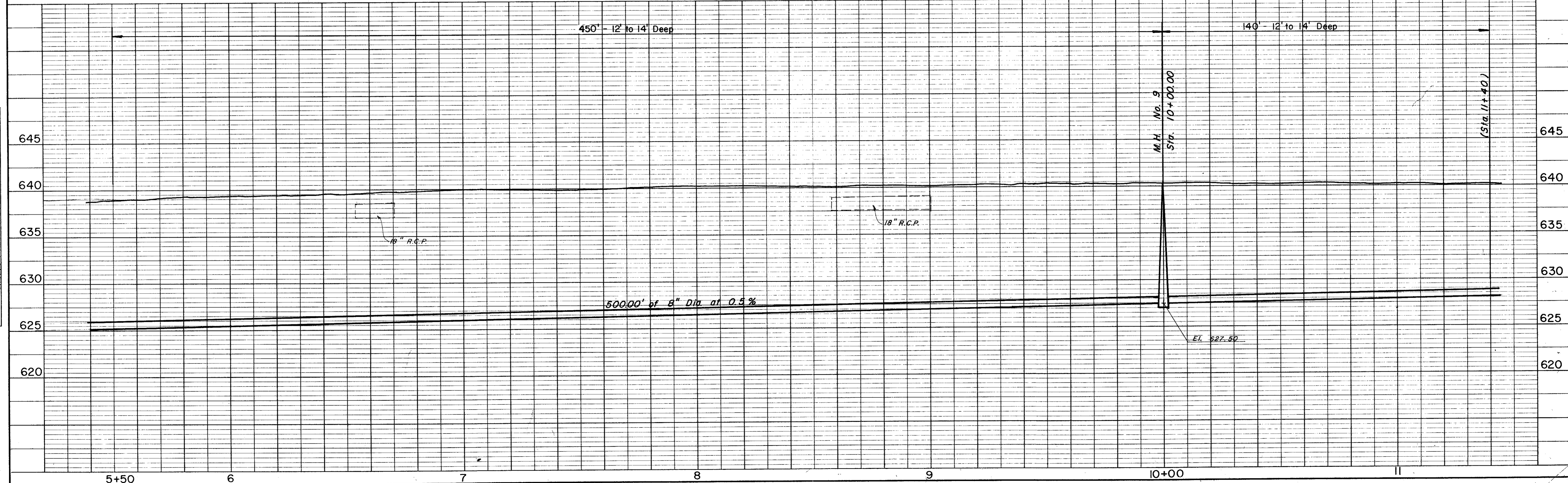


TOWN OF ADDISON  
 DALLAS COUNTY, TEXAS  
 ADDISON ROAD SANITARY SEWER

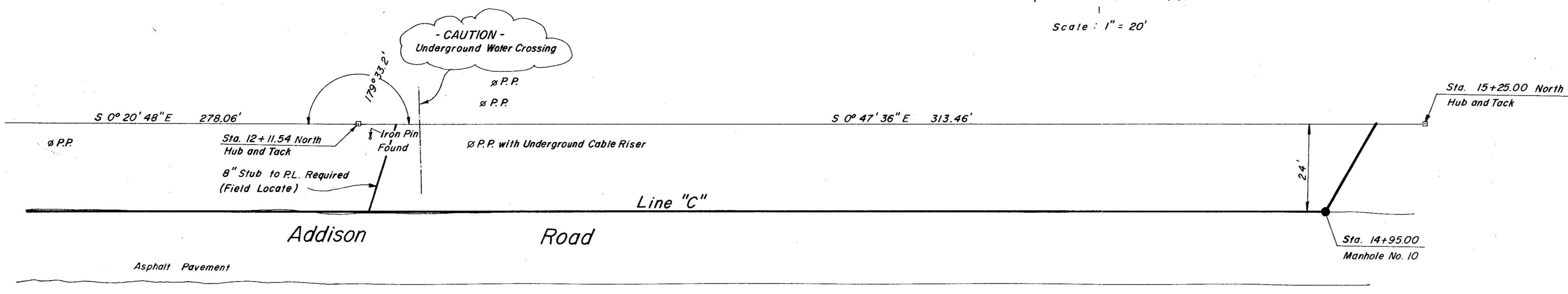
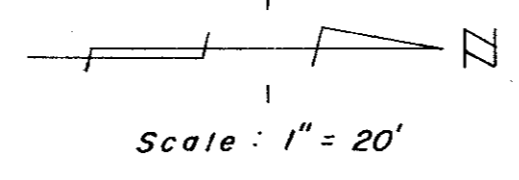
LINE "C"  
 From Sta. 5+50 To Sta. 11+00

GINN & STACY, INC.  
 CONSULTING ENGINEERS DALLAS, TEXAS

Designed By H.W. Ginn Scale: As Shown  
 Drawn By B.J. Stark Date: Jun. 1978 Sheet 8 of 9



ESTIMATED QUANTITIES	
8" P.V.C. SEWER (10'-12")	350 L.F.
8" P.V.C. SEWER (12"-14")	60 L.F.
MANHOLE (10-12)	1 EA.
6" P.V.C. SEWER LATERAL	100 L.F.



DATE \_\_\_\_\_  
 BY \_\_\_\_\_  
 SURVEYED \_\_\_\_\_  
 PLOTTED \_\_\_\_\_  
 NOTE BOOK \_\_\_\_\_  
 NO. \_\_\_\_\_

- LEGEND**
- Hub & Tack
  - CORP Monument
  - P.P. Power Pole
  - W.M. Water Meter
  - W.V. Water Valve
  - W.H. Water Hydrant
  - F.H. Fire Hydrant
  - G.M. Gas Meter
  - T. Telephone Box
  - Guy Wire
  - I.P. Iron Pin
  - M.B. Mail Box
  - Water Line
  - Gas Line
  - - - - - Underground Telephone

TOWN OF ADDISON  
 DALLAS COUNTY, TEXAS

ADDISON ROAD SANITARY SEWER

LINE "C"  
 From Sta. 11+00 To Sta. 16+00

GINN & STACY, INC.  
 CONSULTING ENGINEERS DALLAS, TEXAS

Designed By H. W. Ginn Scale: As Shown Sheet 9 of 9  
 Drawn By B. J. Stark Date: Jun. 1978

DATE \_\_\_\_\_  
 BY \_\_\_\_\_  
 SURVEYED \_\_\_\_\_  
 PLOTTED \_\_\_\_\_  
 NOTE BOOK \_\_\_\_\_  
 NO. \_\_\_\_\_

