

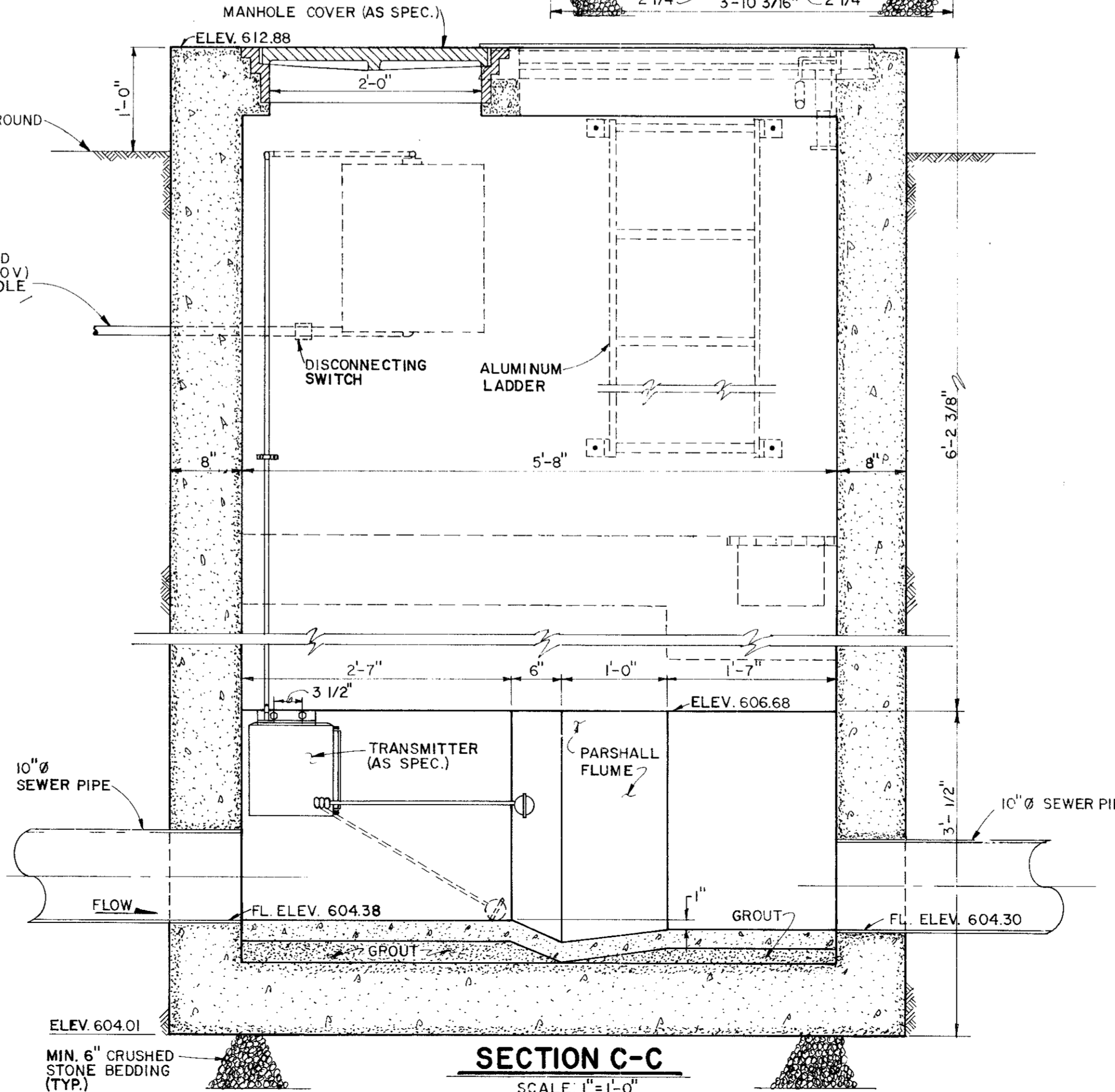
NOTES: 1. ALUMINUM LADDER WITH STEPS MIN. OF 3/4" AND A RISE NOT TO EXCEED 12". THE BAR STOCK SHALL BE A MIN. OF 2" x 1/2" LADDER RINGS SHALL BE INSERTED IN HOLES IN THE LADDER STRINGS AND WELDED. LADDER SHALL BE ANCHORED TO WALL WITH 3/4" STAINLESS STEEL BOLTS.
 2. RECTANGULAR CAST IRON GRATING 12" x 15", NEENAH R-4436 TYPE "D" WITH ANGLE FRAME NEENAH R-4899.

SECTION A-A
SCALE: 1"=1'-0"

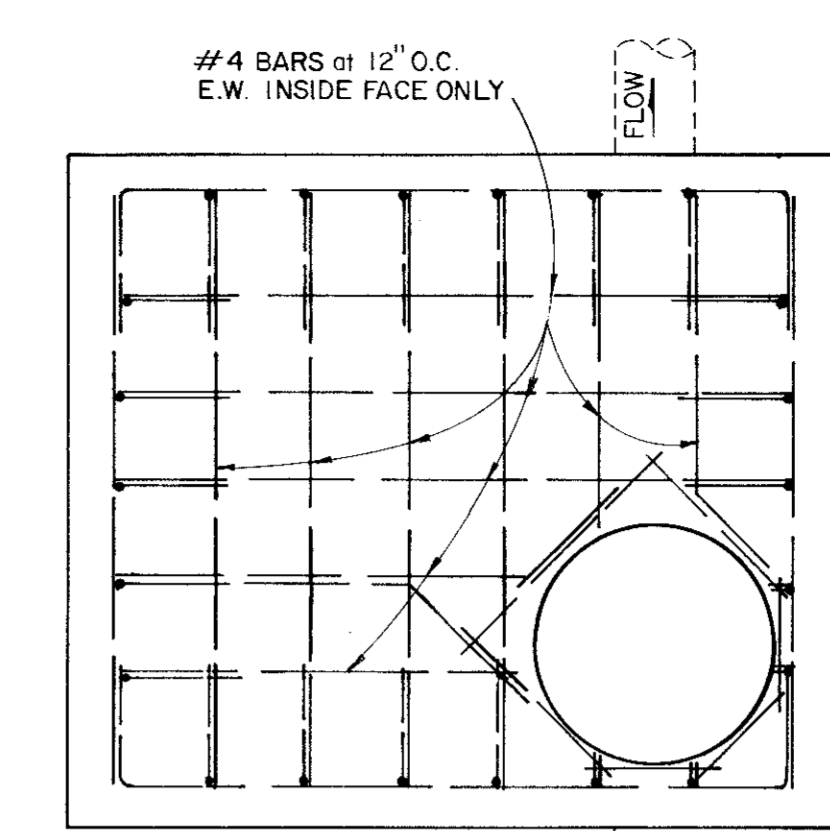


PLAN
SCALE: 1"=1'-0"

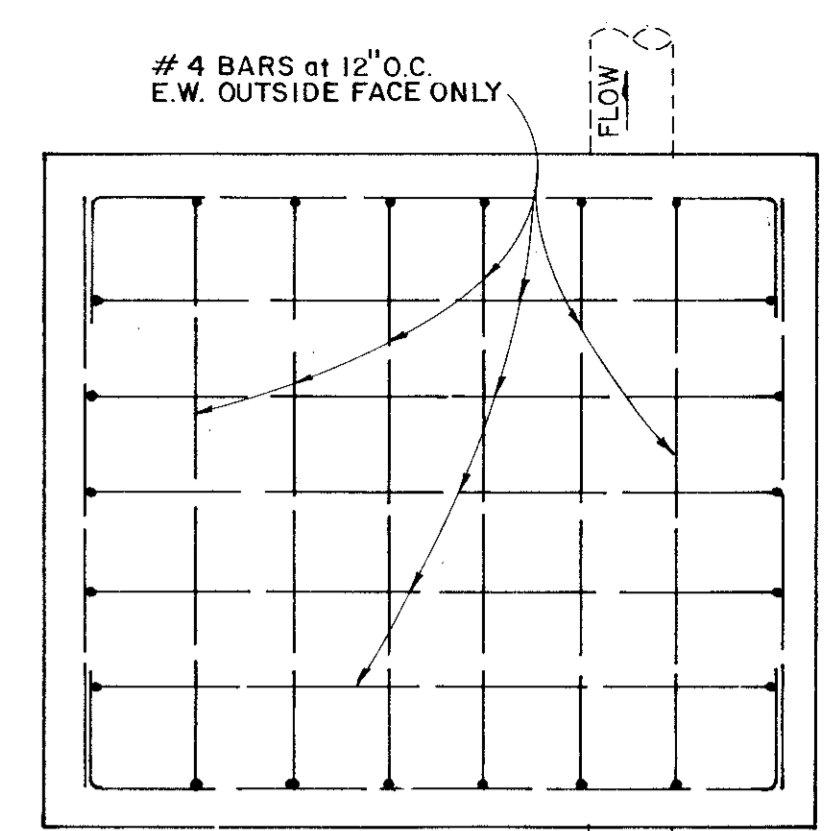
PROPOSED FLUME HOUSING DETAILS



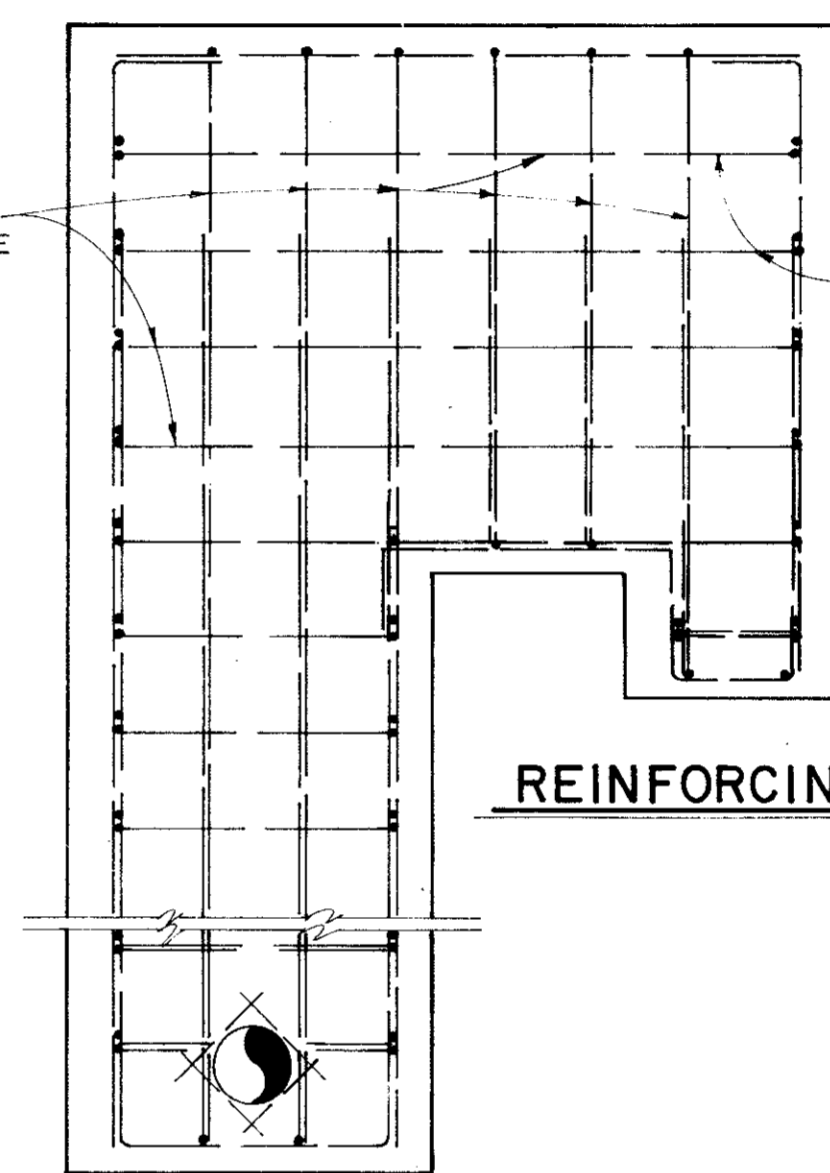
SECTION C-C
SCALE: 1"=1'-0"



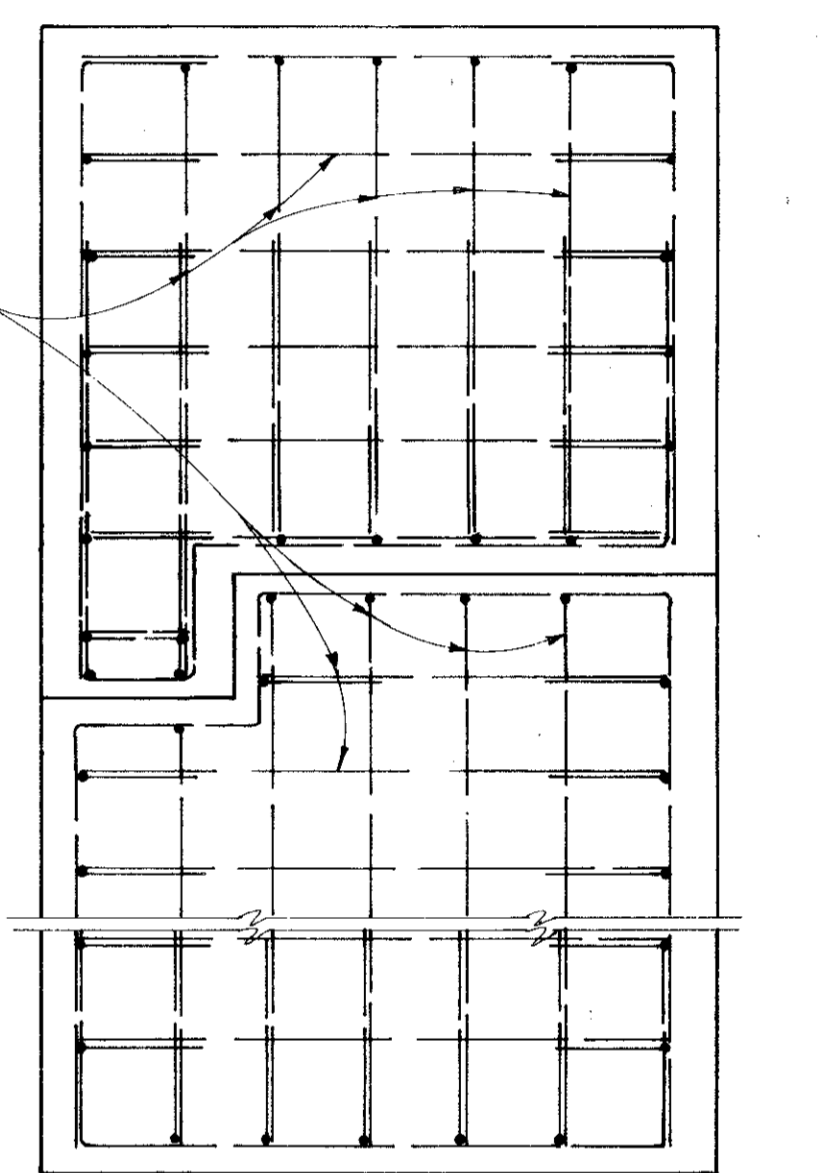
TOP SLAB
SCALE: 1/2"=1'-0"



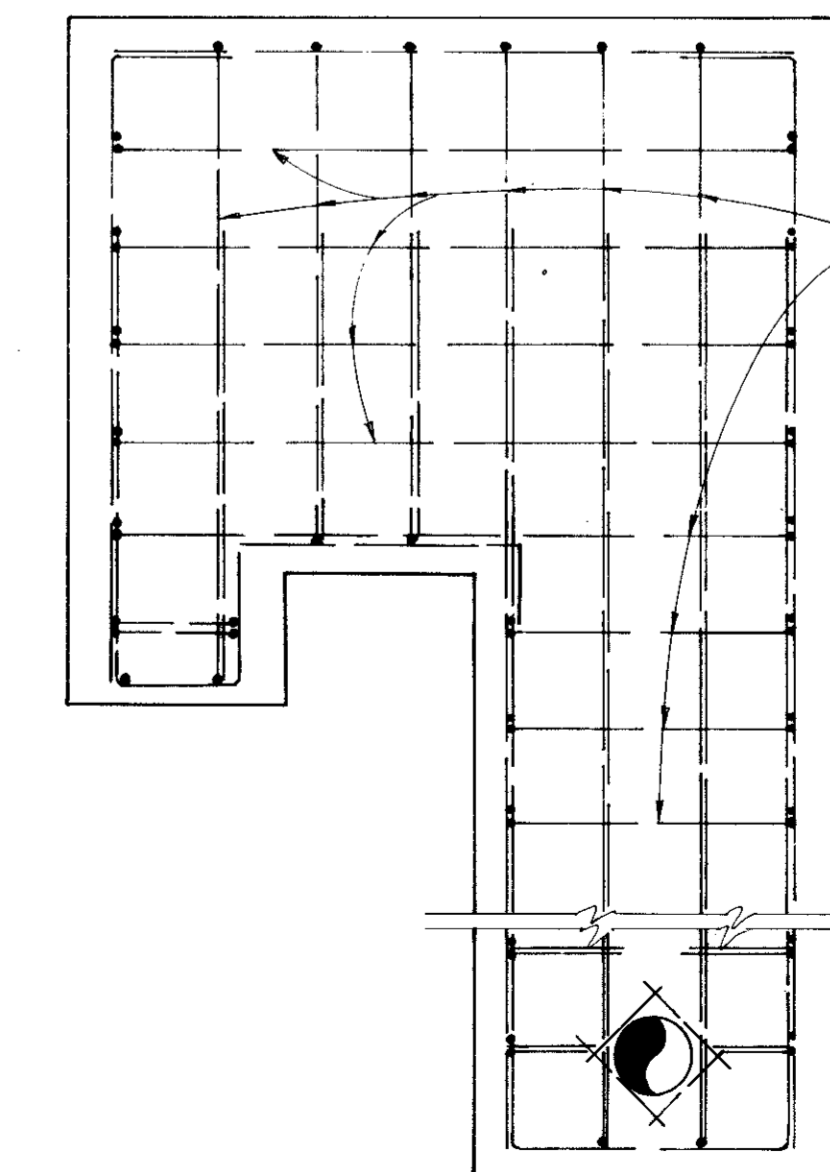
BOTTOM SLAB
SCALE: 1/2"=1'-0"



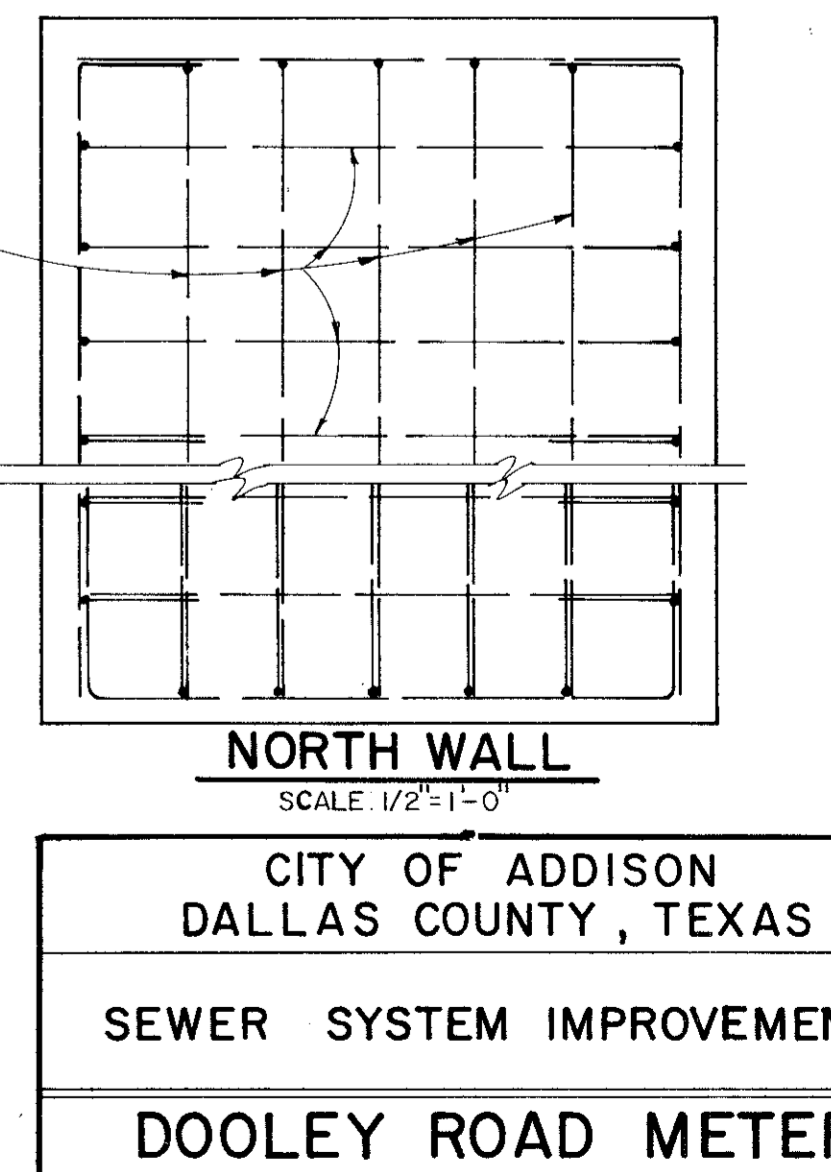
WEST WALL
SCALE: 1/2"=1'-0"



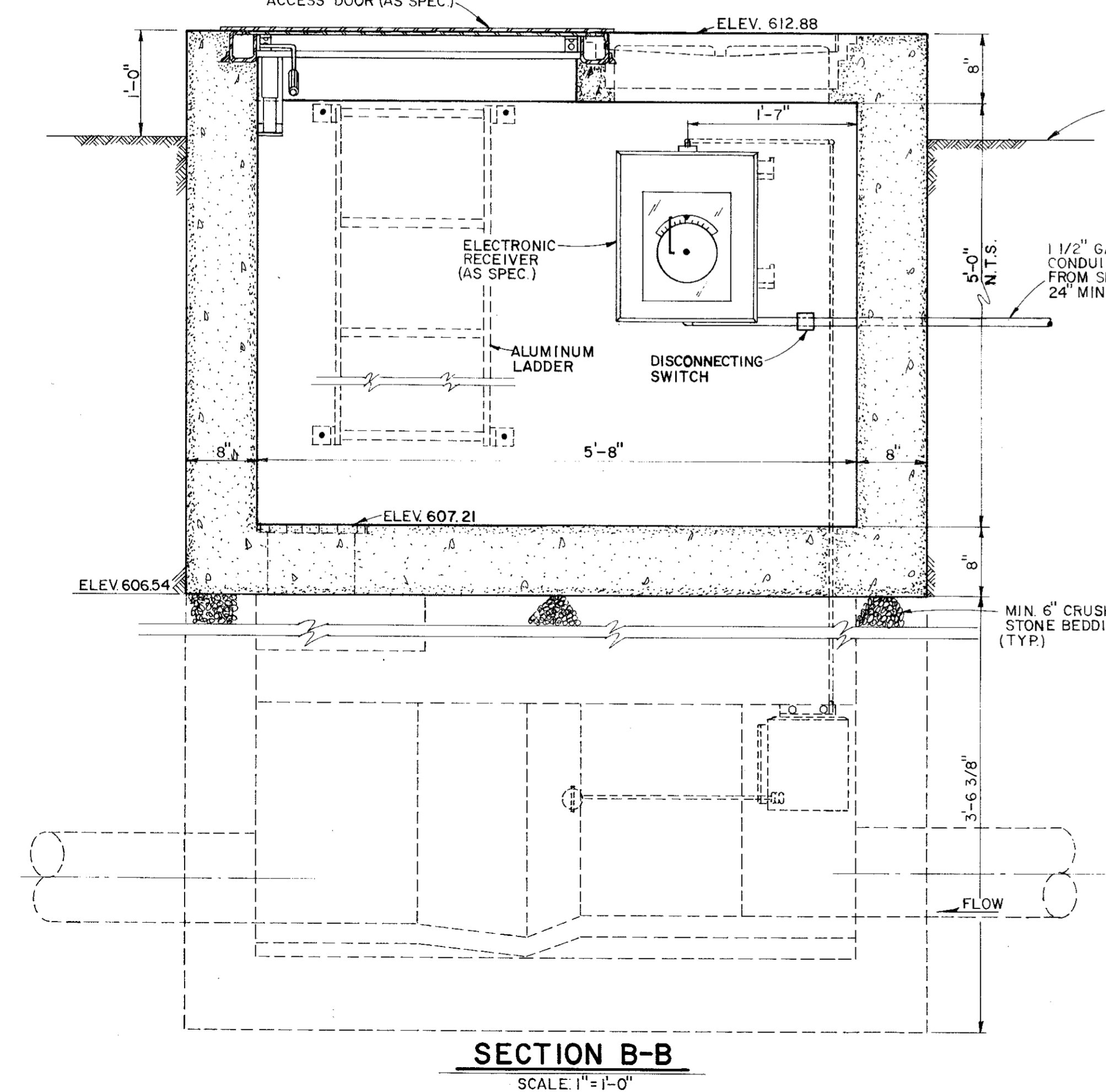
SOUTH WALL
SCALE: 1/2"=1'-0"



EAST WALL
SCALE: 1/2"=1'-0"



NORTH WALL
SCALE: 1/2"=1'-0"



SECTION B-B
SCALE: 1"=1'-0"



CITY OF ADDISON
 DALLAS COUNTY, TEXAS
 SEWER SYSTEM IMPROVEMENTS
DOOLEY ROAD METER STATION
 GINN & STACY, INC.
 CONSULTING ENGINEERS - DALLAS, TEXAS
 DESIGNED BY: J.O.S. SCALE: AS SHOWN
 DRAWN BY: G.L.H. DATE: 1978