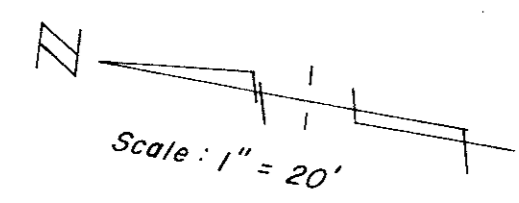
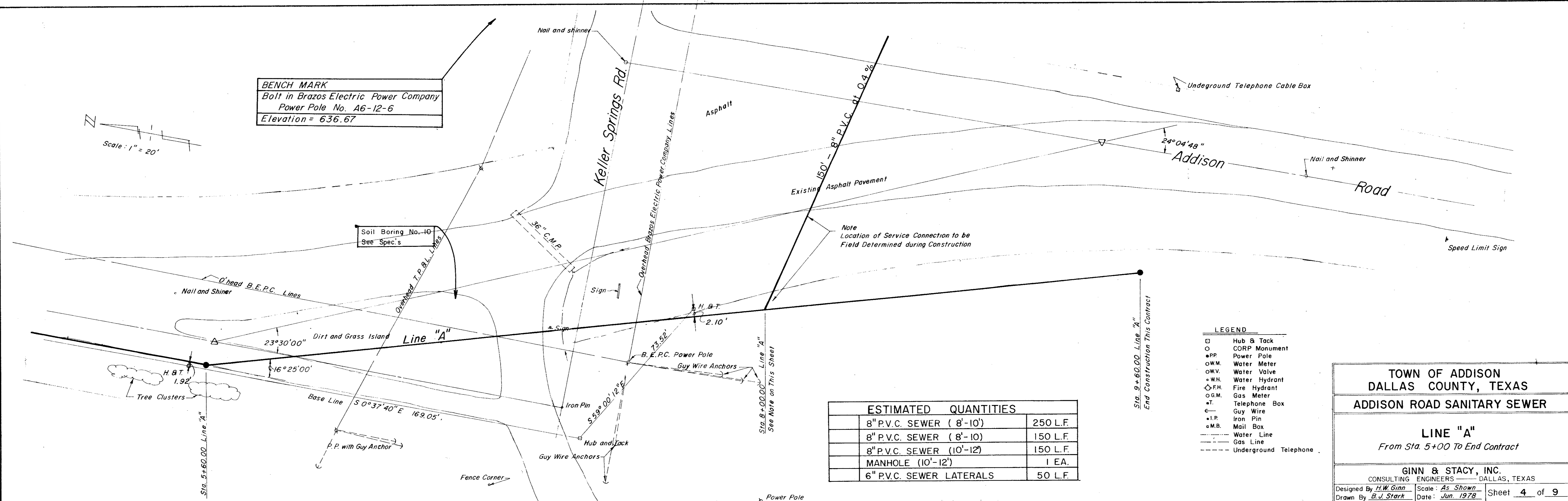


**BENCH MARK**  
 Bolt in Brazos Electric Power Company  
 Power Pole No. A6-12-6  
 Elevation = 636.67



**PLAN**  
 SURVEYED BY: [Blank]  
 ROUTED BY: [Blank]  
 CHECKED BY: [Blank]  
 DATE: [Blank]  
 NO. OF WAY CHECKED: [Blank]  
 NO. [Blank]



ESTIMATED QUANTITIES	
8" P.V.C. SEWER ( 8'-10')	250 L.F.
8" P.V.C. SEWER ( 8'-10)	150 L.F.
8" P.V.C. SEWER (10'-12')	150 L.F.
MANHOLE (10'-12')	1 EA.
6" P.V.C. SEWER LATERALS	50 L.F.

- LEGEND**
- Hub & Tack
  - CORP Monument
  - PP Power Pole
  - W.M. Water Meter
  - W.V. Water Valve
  - W.H. Water Hydrant
  - F.H. Fire Hydrant
  - G.M. Gas Meter
  - ⊕ Telephone Box
  - ⊕ Guy Wire
  - ⊕ Mail Box
  - ⊕ I.P. Iron Pin
  - ⊕ M.B. Mail Box
  - Water Line
  - Gas Line
  - - - - - Underground Telephone

**TOWN OF ADDISON  
 DALLAS COUNTY, TEXAS**

**ADDISON ROAD SANITARY SEWER**

**LINE "A"**  
 From Sta. 5+00 To End Contract

**GINN & STACY, INC.**  
 CONSULTING ENGINEERS — DALLAS, TEXAS

Designed By *H.W. Ginn* Scale: *As Shown* Sheet **4** of **9**  
 Drawn By *B.J. Stark* Date: *Jun. 1978*

**PROFILE**  
 SURVEYED BY: [Blank]  
 ROUTED BY: [Blank]  
 CHECKED BY: [Blank]  
 DATE: [Blank]  
 NO. OF WAY CHECKED: [Blank]  
 NO. [Blank]

