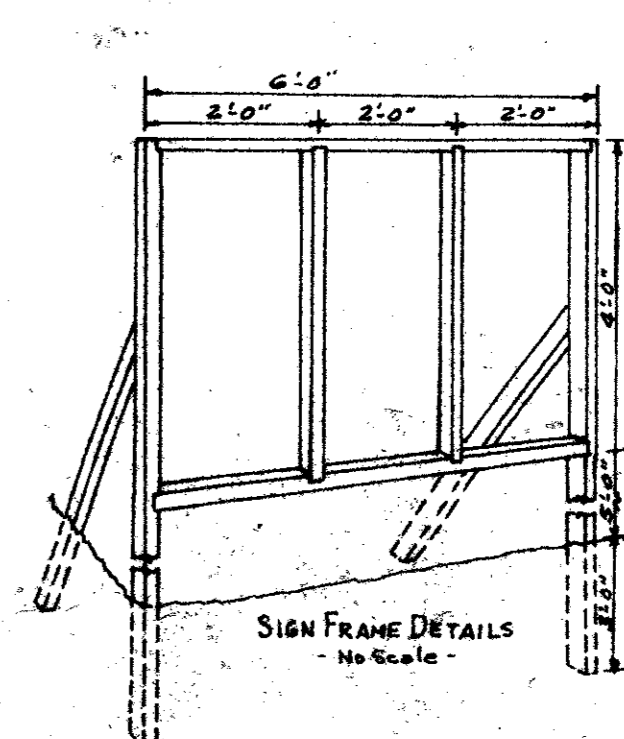


ADDISON, TEXAS - WATER SYSTEM
 HOUSING AND HOME FINANCE AGENCY
PROJECT NO. PFL-V-41-65
 HOMER A. HUNTER ASSOCIATES - ENGINEERS
 DALLAS, TEXAS
CONTRACTORS
 WATER SYSTEM - PUMP STATION - RESERVOIR
 WILKS, DAKE & STEED DROUGHTON & ERICSON ANDERSON TANK CO.
 TYLER, TEXAS DALLAS, TEXAS ARP, TEXAS

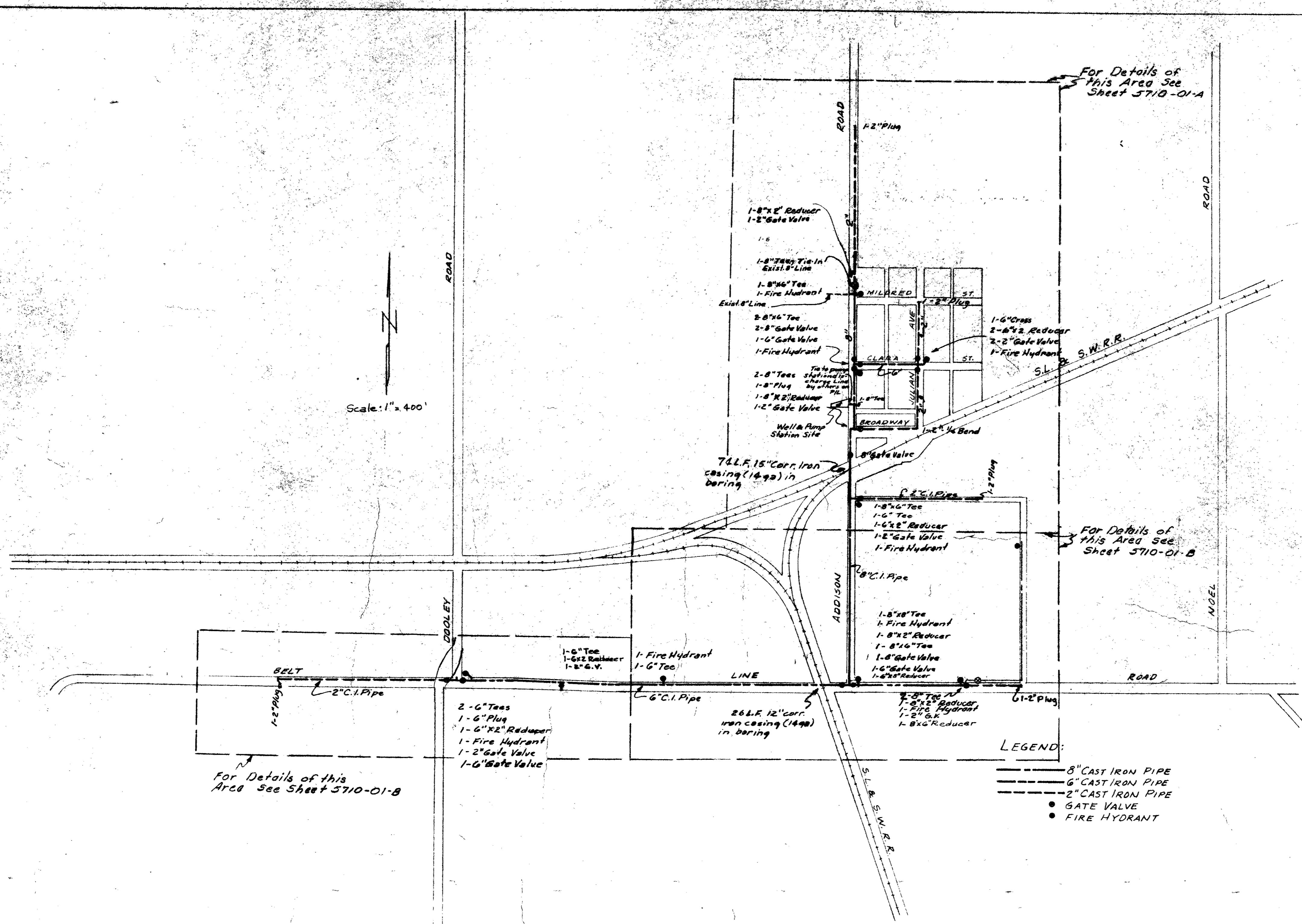


SIGN LAYOUT & MESSAGE
 No Scale

SPECIFICATIONS
 Sign Panel of 1/2" Laminated Duolux Masonite.
 Frame of 2" x 4" Stock.
 Frame to be painted Flat Black.
 Paint background of sign White.
 Paint lettering in Ultra Marine Blue.

NOTE: All paint to be outdoor Type.

DETAILS
PROJECT IDENTIFICATION SIGN



- LEGEND:**
- 8" CAST IRON PIPE
 - 6" CAST IRON PIPE
 - 2" CAST IRON PIPE
 - GATE VALVE
 - FIRE HYDRANT

DRAWINGS & SPECIFICATIONS APPROVED AND IDENTIFIED AS PARTS OF OFFICIAL CONTRACT DOCUMENTS:

CITY OF ADDISON, TEXAS
 ADDISON, TEXAS
 M.W. Morris, Mayor

ENGINEER:
 HOMER A. HUNTER ASSOCIATES
 By: _____

HOUSING AND HOME FINANCE AGENCY
 Office of Regional Administrator
 Region I
 ENGINEERING BRANCH
 By: _____
 REGIONAL COUNCIL
 By: _____

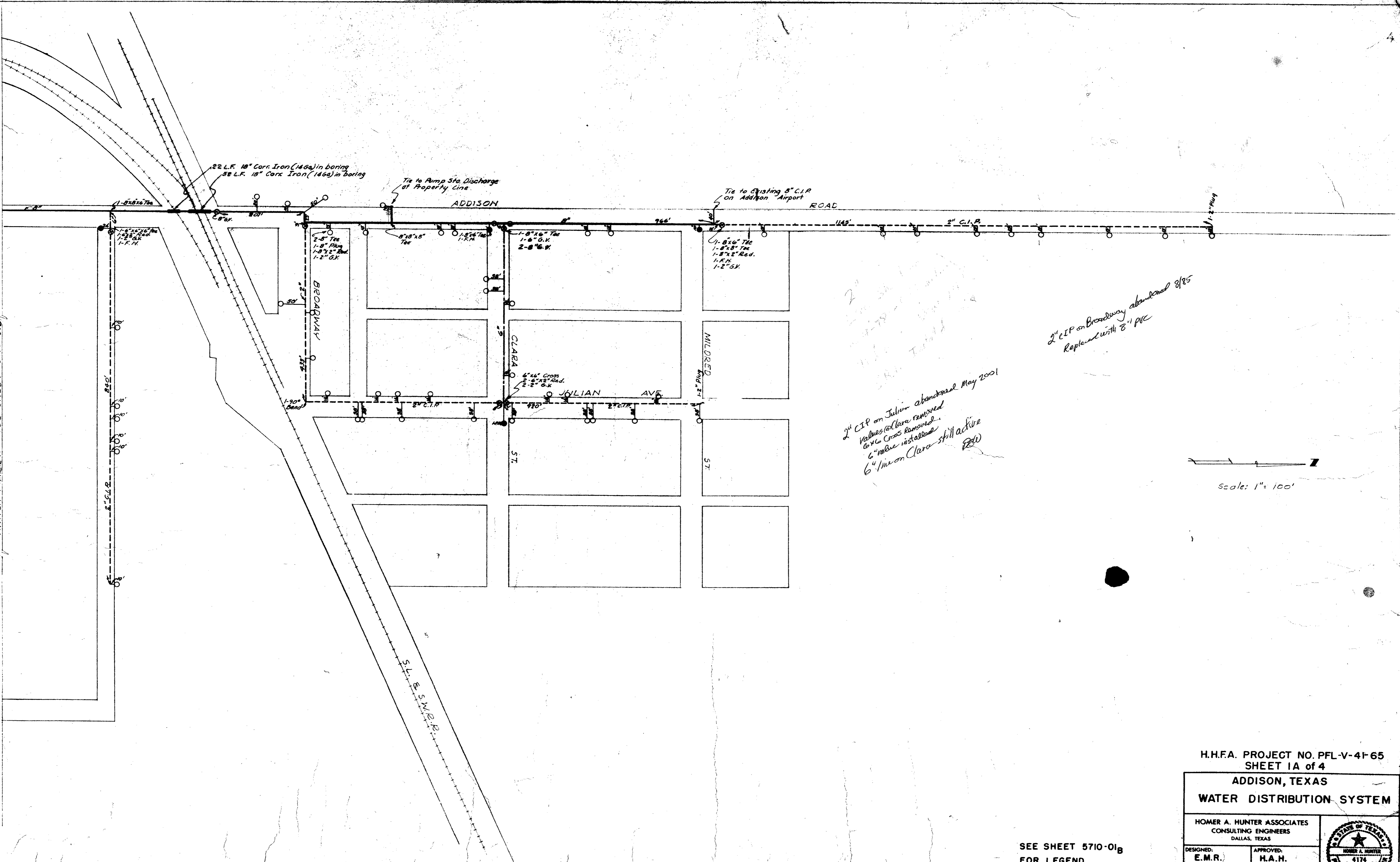
CONTRACTOR:
 _____ (Contractor)
 _____ (City & State)
 By: _____ (Title)

HHA PROJECT NO. PFL-V-41-65
 Sheet 1 of 4

ADDISON, TEXAS	
WATER DISTRIBUTION SYSTEM	
HOMER A. HUNTER ASSOCIATES - CONSULTING ENGINEERS DALLAS, TEXAS	
DESIGNED: E.M.R.	APPROVED: H.A.H.
5710-01	June, 1958 REV. JUD. 1959

ORIGINAL - ADDISON WA Sys.

MATCH MARK A SEE SHEET 5710-01B



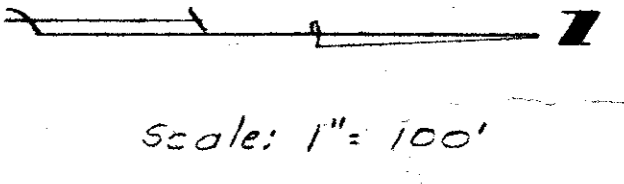
22 L.F. 10" Corc Iron (146a) in boring
38 L.F. 18" Corc Iron (146a) in boring

Tie to Pump Sta. Discharge
of Property Line

Tie to Existing 8" C.I.P.
on Addison Airport
ROAD

2nd CIP on Julian abandoned May 2001
Valves on Clara removed
6" valve installed
6" line on Clara still active
RHW

2" CIP on Broadway abandoned 8/85
Replaced with 8" PVC



H.H.F.A. PROJECT NO. PFL-V-4F-65
SHEET 1A of 4

ADDISON, TEXAS
WATER DISTRIBUTION SYSTEM

HOMER A. HUNTER ASSOCIATES
CONSULTING ENGINEERS
DALLAS, TEXAS

DESIGNED: E.M.R. APPROVED: H.A.H.



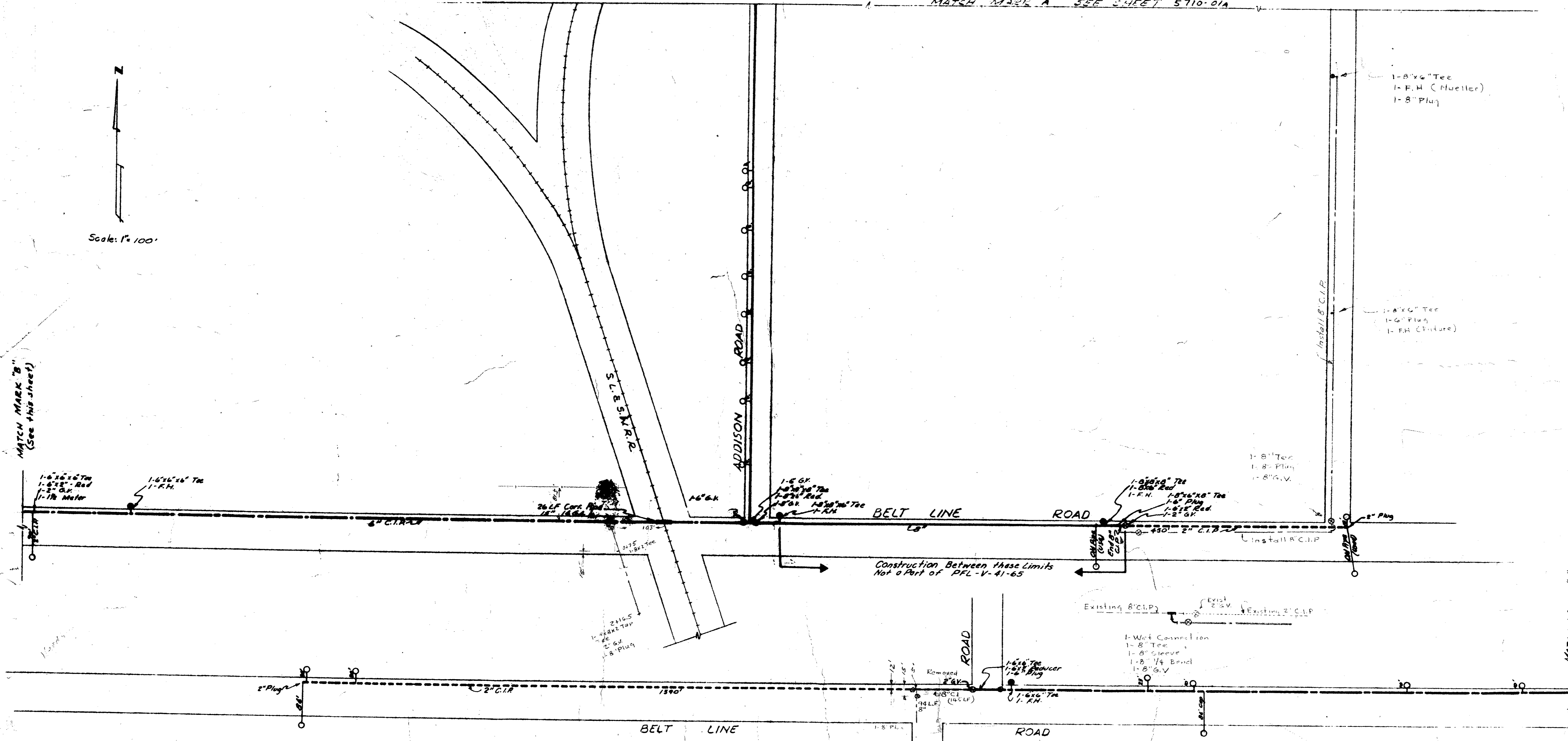
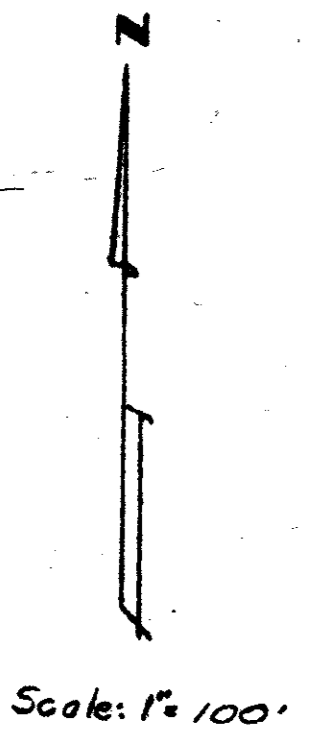
5710-01A REV. JAN. 1959

AS BUILT

SEE SHEET 5710-01B
FOR LEGEND

1132

MATCH MARK 'A' SEE SHEET 5710-01A



MATCH MARK 'B' (See this sheet)

MATCH MARK 'B' (See this sheet)

LEGEND

- 8" CAST IRON PIPE
- 6" CAST IRON PIPE
- 2" CAST IRON PIPE
- ⊕ GATE VALVE
- FIRE HYDRANT
- COPPER SERVICE & METER & DISTANCE - METER TO MAIN

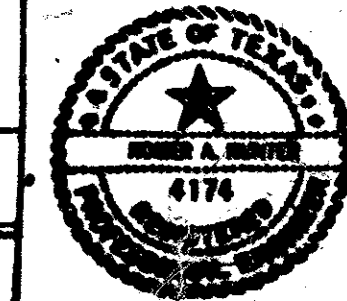
H.H.F.A. PROJECT NO. PFL-V-41-65 SHEET 1B of 4

ADDISON, TEXAS WATER DISTRIBUTION SYSTEM

HOMER A. HUNTER ASSOCIATES CONSULTING ENGINEERS DALLAS, TEXAS

DESIGNED BY: E.M.R. APPROVED BY: H.A.H.

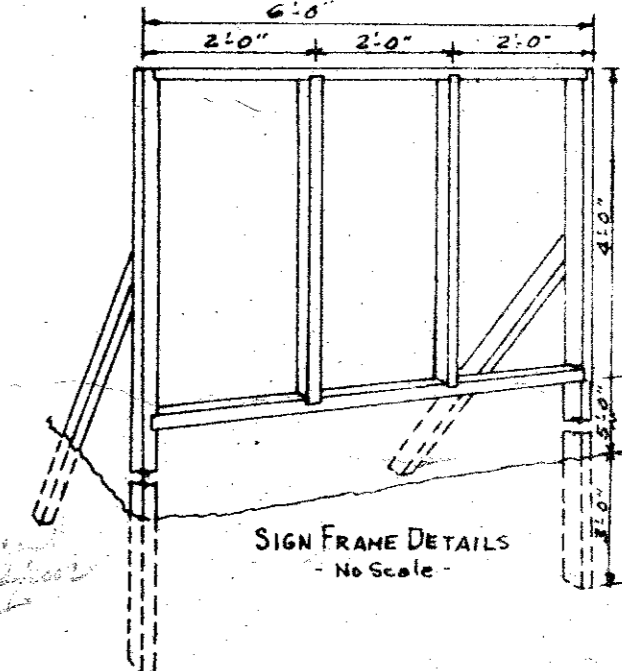
5710-01B REV. JAN. 1969



6'-0"

ADDISON, TEXAS - WATER SYS
HOUSING AND HOME FINANCE AG
PROJECT NO. PFL-V-41-6
HOMER A. HUNTER ASSOCIATES - ENGINEERS
 DALLAS, TEXAS
CONTRACTORS
WATER SYSTEM - PUMP STATION - RESERVOIR
 WILKS, DAKE & STEED BROUGHTON & ERICSON ANDERSON TANK CO.
 TYLER, TEXAS DALLAS, TEXAS ARP, TEXAS

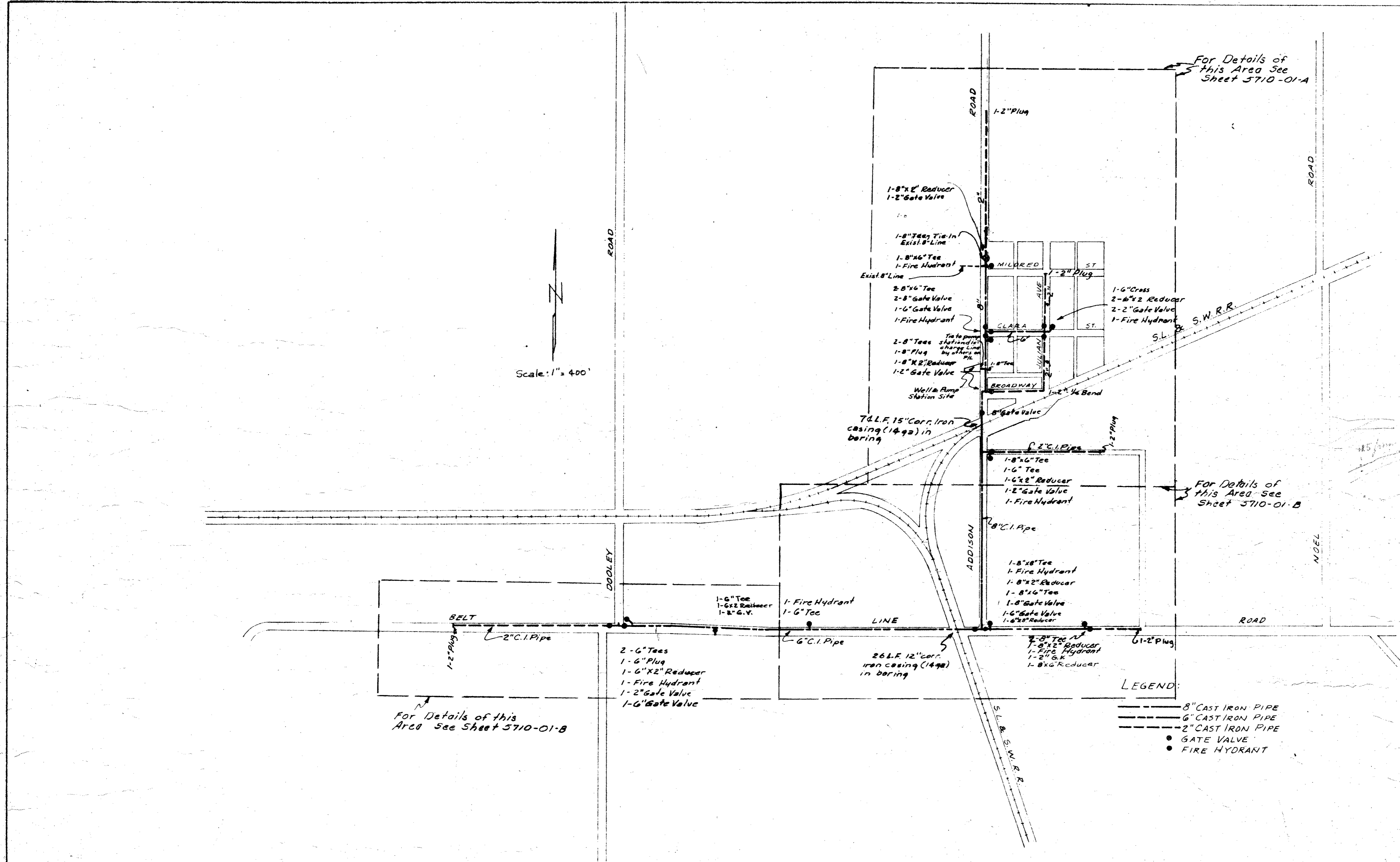
SIGN LAYOUT & MESSAGE
 No Scale



SPECIFICATIONS
 Sign Panel of 1/2" Laminated Duolux Masonite.
 Frame of 2" x 4" Stock.
 Frame to be painted Flat Black.
 Paint background of sign white.
 Paint lettering in Ultra Marine Blue.

NOTE: All paint to be outdoor type.

DETAILS
PROJECT IDENTIFICATION
SIGN



- LEGEND:**
- 8" CAST IRON PIPE
 - 6" CAST IRON PIPE
 - 2" CAST IRON PIPE
 - GATE VALVE
 - FIRE HYDRANT

DRAWINGS & SPECIFICATIONS APPROVED AND IDENTIFIED AS PARTS OF OFFICIAL CONTRACT DOCUMENTS:

CITY OF ADDISON, TEXAS
 ADDISON, TEXAS
 M.W. Morris, Mayor

ENGINEER:
 HOMER A. HUNTER ASSOCIATES
 By: _____

HOUSING AND HOME FINANCE AGENCY
 Office of Regional Administrator
 Region I
 ENGINEERING BRANCH
 By: _____
 REGIONAL COUNCIL
 By: _____

CONTRACTOR:

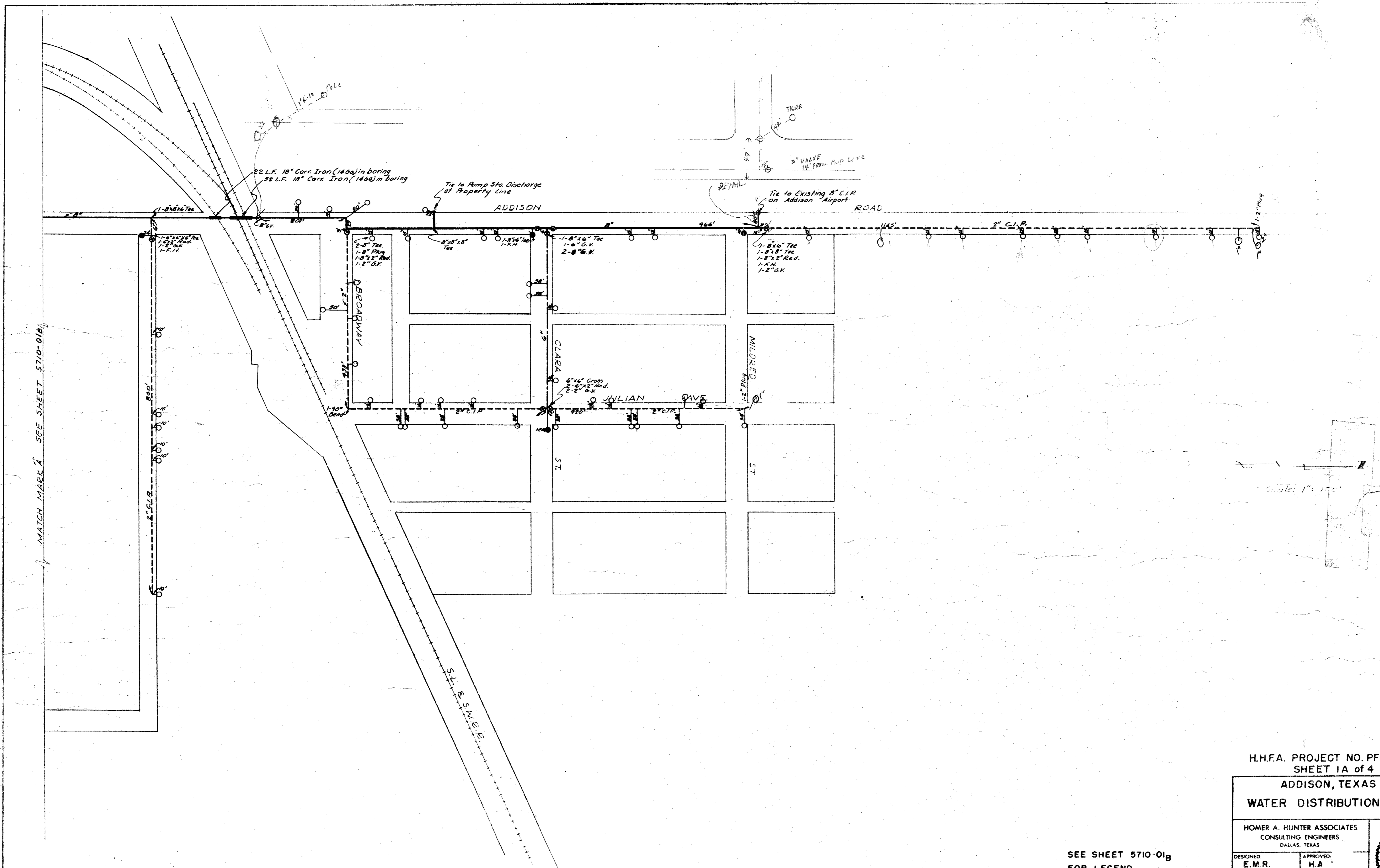
 By: _____

H-HFA PROJECT NO. PFL-V-41-65
 Sheet 1 of 4

ADDISON, TEXAS WATER DISTRIBUTION SYSTEM	
HOMER A. HUNTER ASSOCIATES CONSULTING ENGINEERS DALLAS, TEXAS	
DESIGNED: E.M.R.	APPROVED: Y.A.H.
5710-01	958 459

3

3



MATCH MARK "A" SEE SHEET 5710-01A

22 L.F. 18" Cor. Iron (146a) in boring
 52 L.F. 18" Cor. Iron (146a) in boring

Tie to Pump Sta. Discharge
 at Property Line

Tie to Existing 8" C.I.P.
 on Addison Airport ROAD

BEADWAY

CLARA

MILDRED

JULIAN AVE.

ST

ST

S.L. S.W.E.B.

Scale: 1" = 100'

H.H.F.A. PROJECT NO. PFL-V-4
 SHEET 1A of 4

ADDISON, TEXAS
 WATER DISTRIBUTION SYSTEM

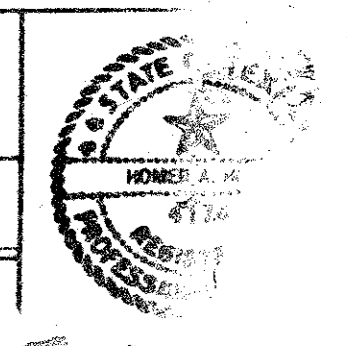
HOMER A. HUNTER ASSOCIATES
 CONSULTING ENGINEERS
 DALLAS, TEXAS

DESIGNED: E.M.R.	APPROVED: H.A.
---------------------	-------------------

5710-01A REV

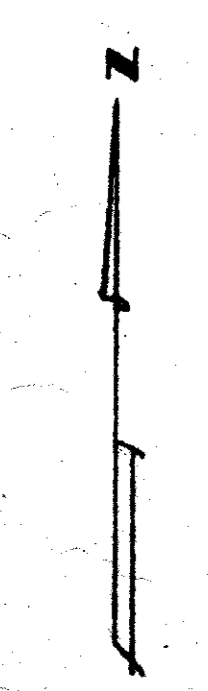
AS B1

SEE SHEET 5710-01B
 FOR LEGEND



5710-01A SHEET 1A of 4

MATCH MARK 'A' SEE SHEET 5710-01A



Scale: 1" = 100'

DR. KNST

MATCH MARK 'B' (See this sheet)

1-6" G.V. Tee
1-6" Red
1-2" G.V.
1-1/2" Meter

1-6" G.V. Tee
1-6" Red
1-2" G.V.

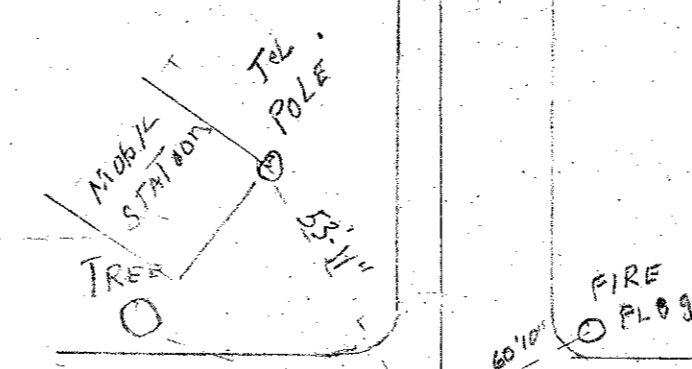
BELT LINE
1" Wood

COX FENCE

S.E. S.W.R.R.

Water Main
15' from P.P.R. Line

ADDISON ROAD



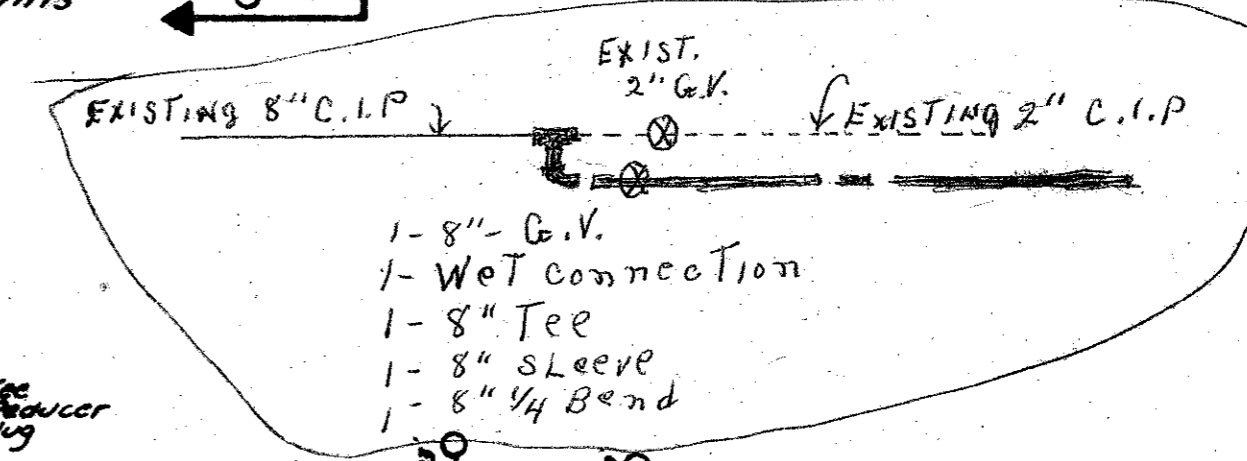
DETAIL OF VALVES

BELT LINE ROAD

ROAD

1-8" Tee
1-8" Plug
1-8" G.V.

Construction Between these Limits
Not a Part of PFL-V-41-65

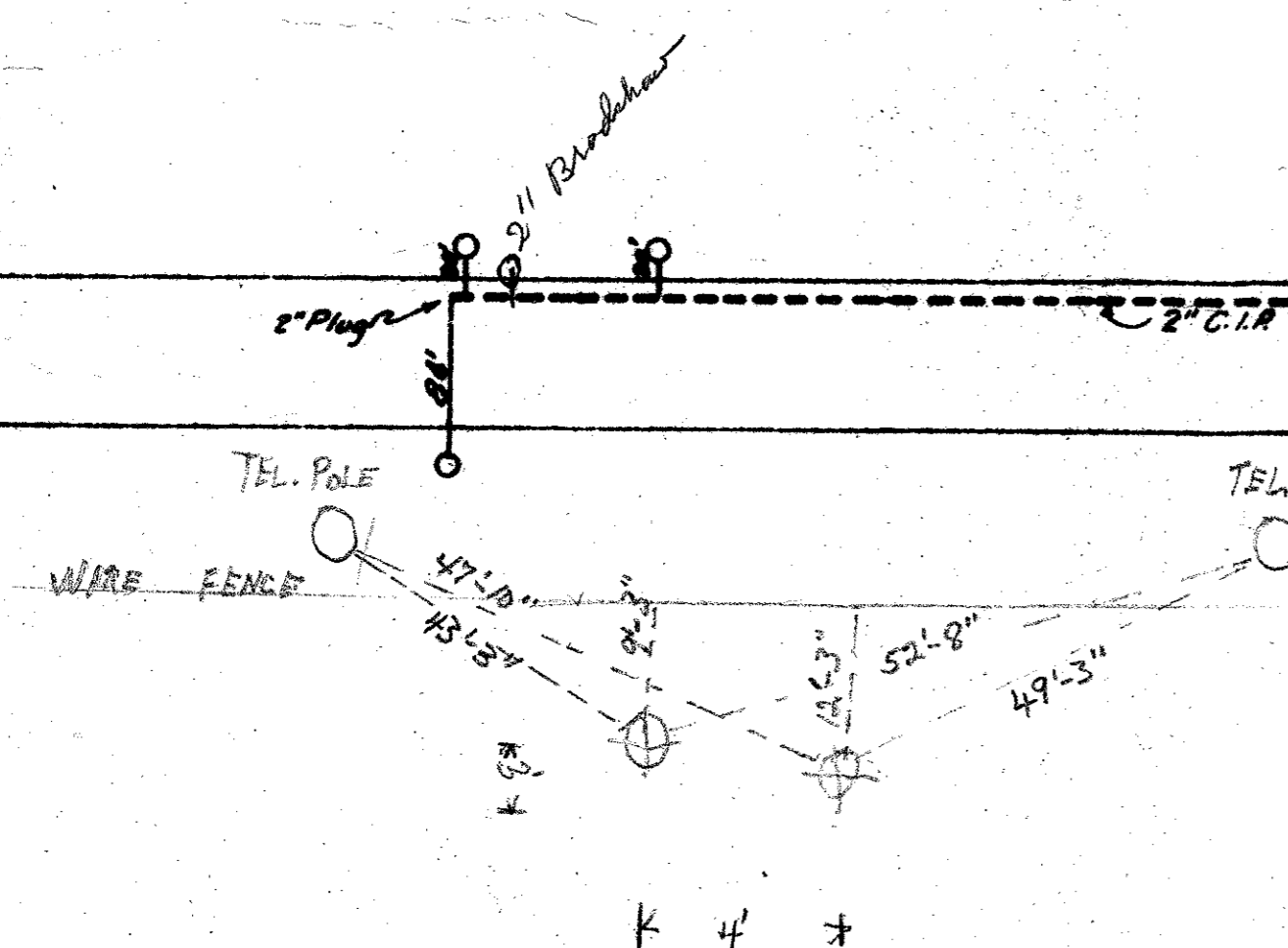


EXISTING 8" C.I.P.

EXIST. 2" G.V.

EXISTING 2" C.I.P.

1-8" G.V.
1- Wet Connection
1-8" Tee
1-8" Sleeve
1-8" 1/4 Band



TEL. POLE

TEL. POLE

BELT LINE

See Detail at Left

2" G.V.

8" C.I.P. Line

DOOLEY

ROAD

ROAD

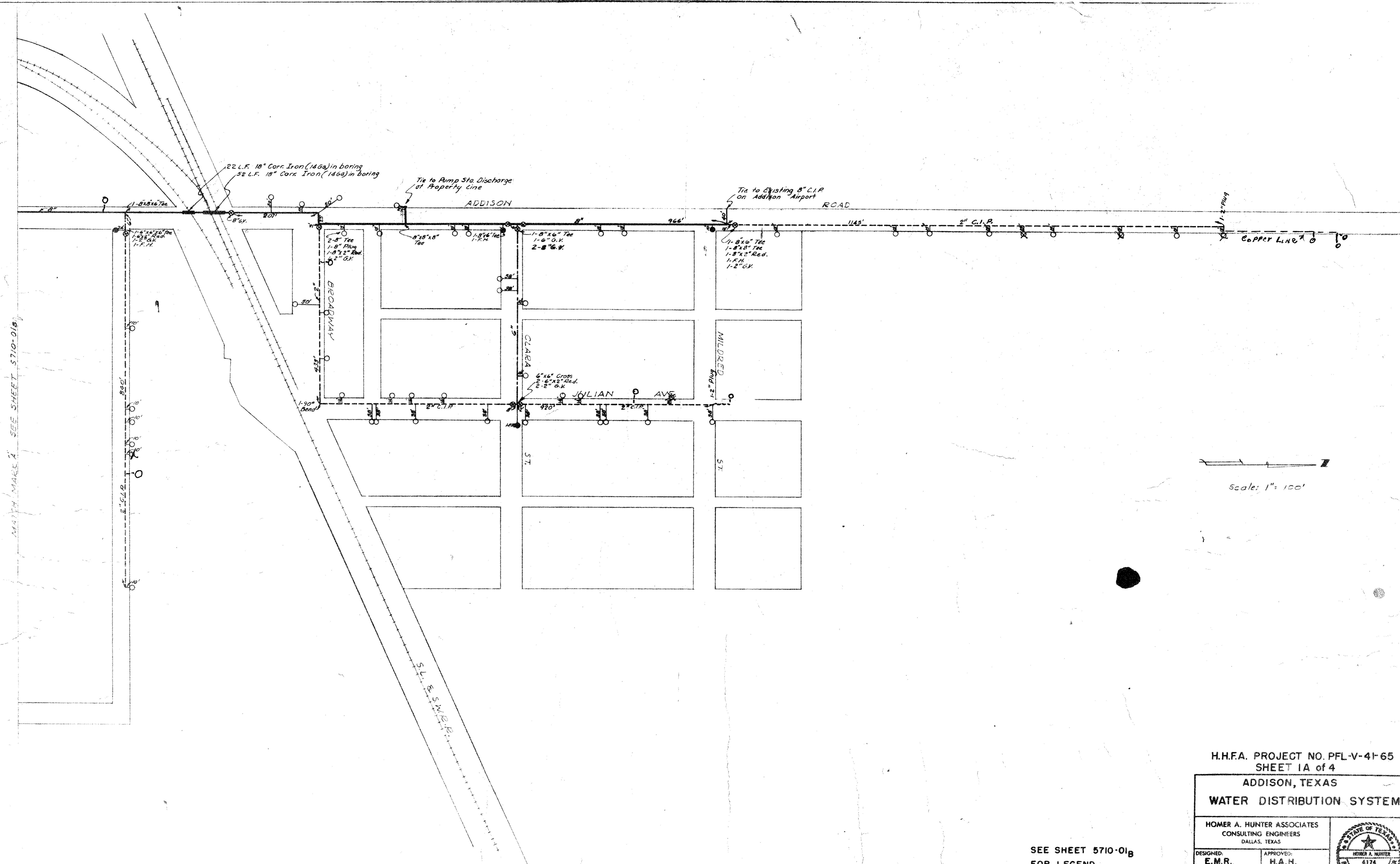
- LEGEND**
- 8" CAST IRON PIPE
 - 6" CAST IRON PIPE
 - 2" CAST IRON PIPE
 - GATE VALVE
 - FIRE HYDRANT
 - COPPER SERVICE & METER & DISTANCE - METER TO MAIN

H.H.F.A. PROJ
SHEE
ADDISON
WATER DIST

HOMER A. HUNTER ASS.
CONSULTING ENGINEER
DALLAS, TEXAS

DESIGNED: E.M.R. APPROVED: H.A.M.

5710-01 REV. JAN. 1959

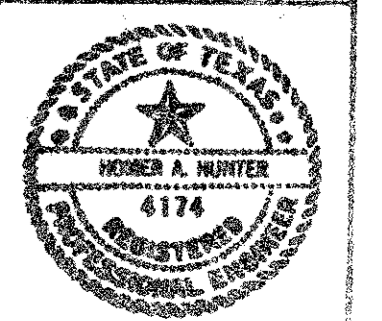


MATCH MAKE A SEE SHEET 5710-01B

Scale: 1" = 100'

SEE SHEET 5710-01B
FOR LEGEND

H.H.F.A. PROJECT NO. PFL-V-41-65 SHEET 1A of 4	
ADDISON, TEXAS	
WATER DISTRIBUTION SYSTEM	
HOMER A. HUNTER ASSOCIATES CONSULTING ENGINEERS DALLAS, TEXAS	
DESIGNED: E.M.R.	APPROVED: H.A.H.
5710-01A REV. JAN. 1959	

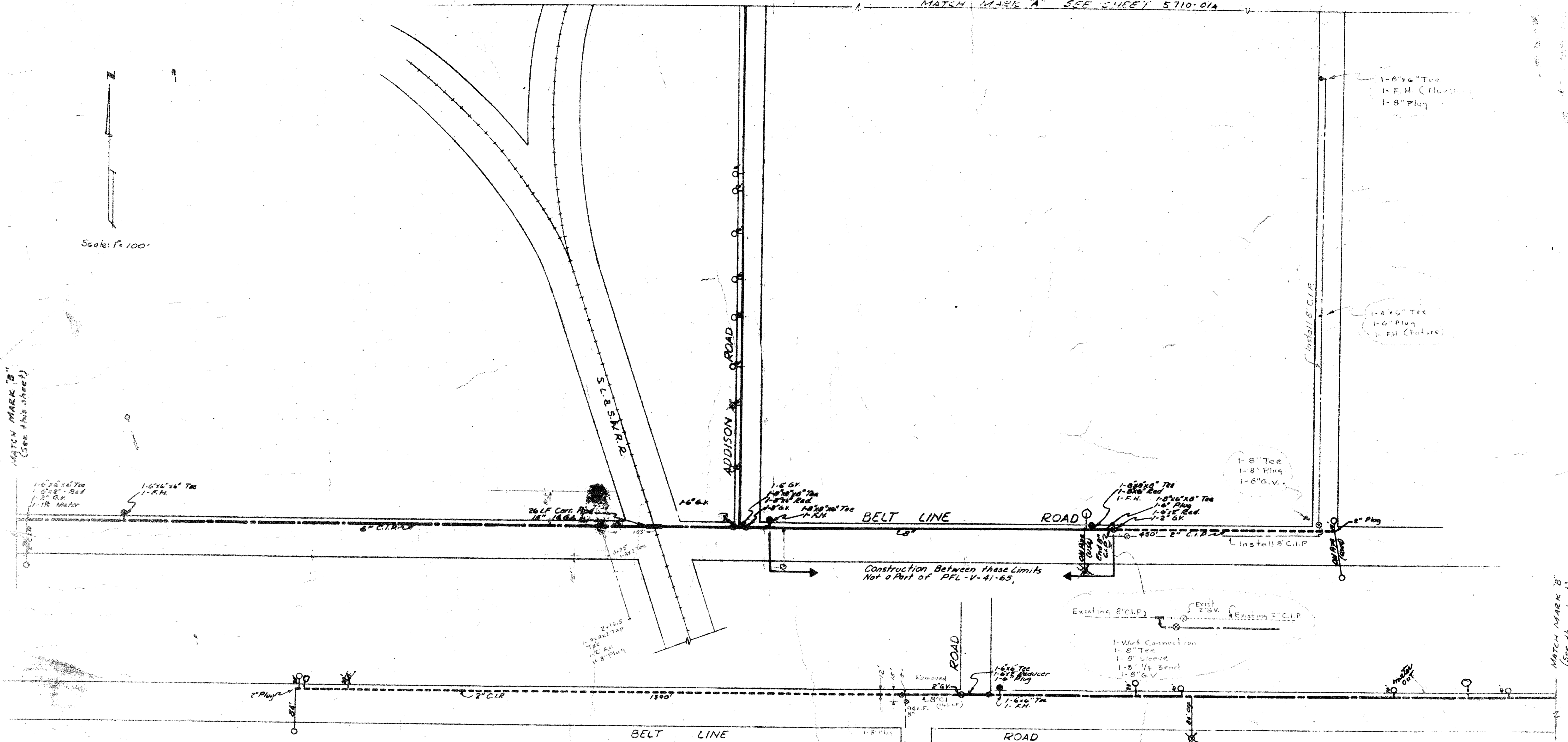


MATCH MARK 'A' SEE SHEET 5710-01A

Scale: 1" = 100'

MATCH MARK 'B' (See this sheet)

MATCH MARK 'B' (See this sheet)



LEGEND

- 8" CAST IRON PIPE
- 6" CAST IRON PIPE
- 2" CAST IRON PIPE
- ⊕ GATE VALVE
- FIRE HYDRANT
- COPPER SERVICE & METER & DISTANCE - METER TO MAIN

H.H.F.A. PROJECT NO. PFL-V-41-65
SHEET 1B of 4

ADDISON, TEXAS
WATER DISTRIBUTION SYSTEM

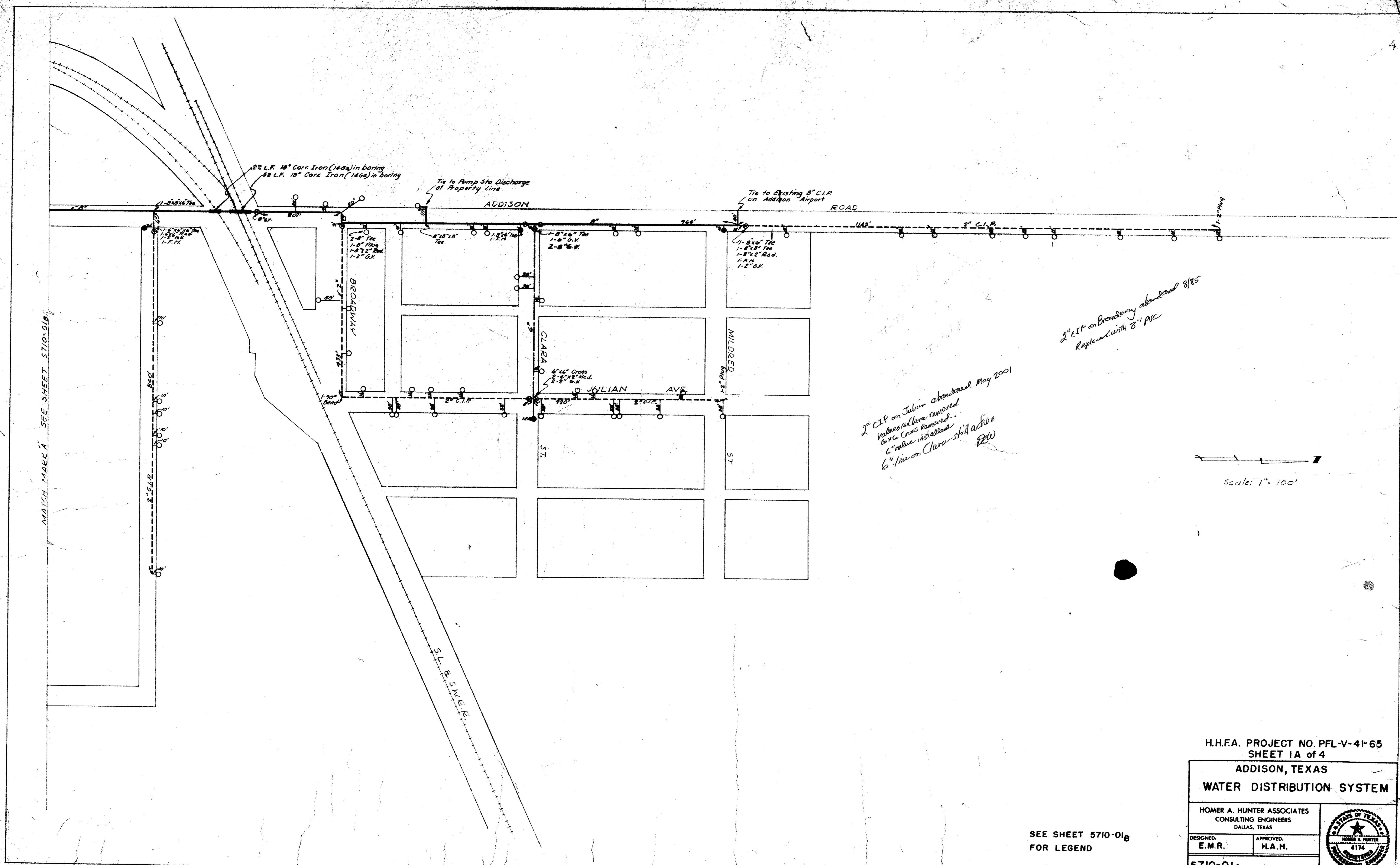
HOMER A. HUNTER ASSOCIATES
CONSULTING ENGINEERS
DALLAS, TEXAS

DESIGNED: E.N.R. APPROVED: H.A.H.



5710-01B REV. JAN. 1959

AS BUILT

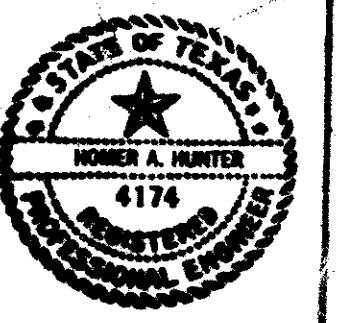


H.H.F.A. PROJECT NO. PFL-V-41-65
 SHEET 1A of 4

ADDISON, TEXAS
 WATER DISTRIBUTION SYSTEM

HOMER A. HUNTER ASSOCIATES
 CONSULTING ENGINEERS
 DALLAS, TEXAS

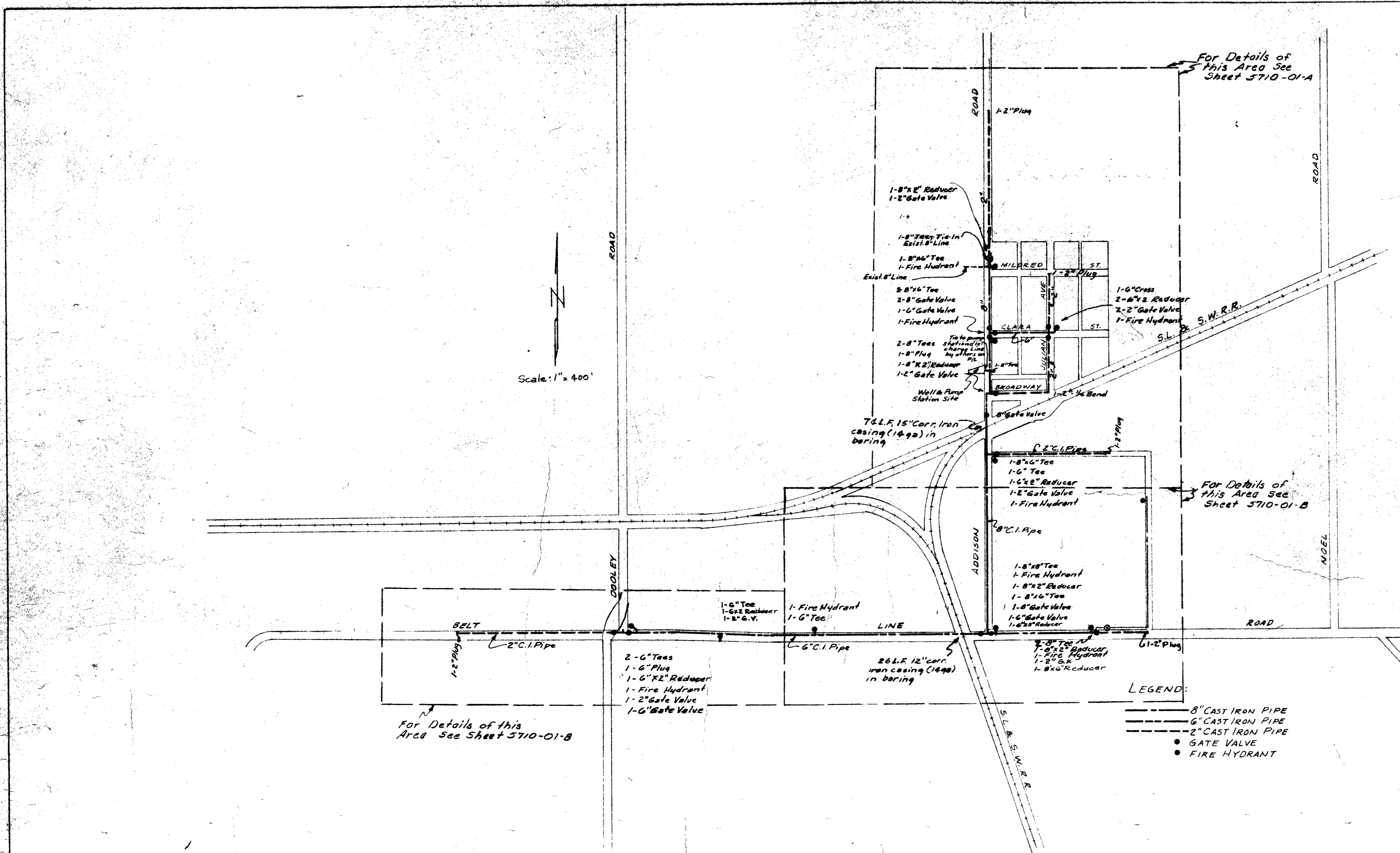
DESIGNED: E.M.R.	APPROVED: H.A.H.
---------------------	---------------------



5710-01A REV. JAN. 1959

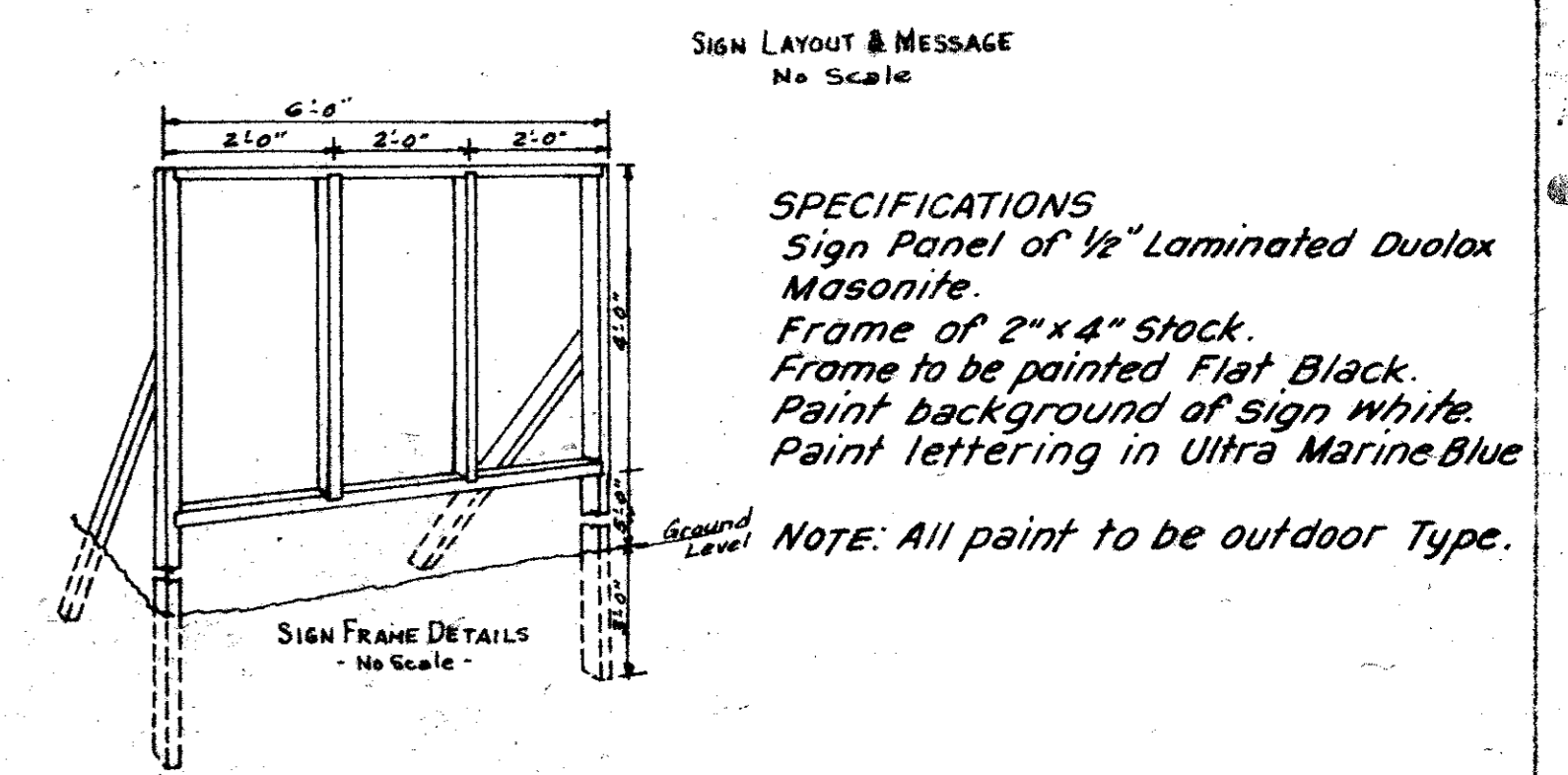
AS BUILT

SEE SHEET 5710-01b
 FOR LEGEND



6'-0"

ADDISON, TEXAS - WATER SYSTEM
HOUSING AND HOME FINANCE AGENCY
PROJECT NO. PFL-V-41-65
HOMER A. HUNTER ASSOCIATES - ENGINEERS
 DALLAS, TEXAS
CONTRACTORS
WATER SYSTEM - PUMP STATION - RESERVOIR
 WILKS, DAKE & STEED BROUGHTON & ERICSON ANDERSON TANK CO.
 TYLER, TEXAS DALLAS, TEXAS ARP, TEXAS



DETAILS
PROJECT IDENTIFICATION
SIGN

DRAWINGS & SPECIFICATIONS APPROVED AND IDENTIFIED AS PARTS OF OFFICIAL CONTRACT DOCUMENTS:

CITY OF ADDISON, TEXAS
 ADDISON, TEXAS
 M.W. Morris, Mayor

HOUSING AND HOME FINANCE AGENCY
 Office of Regional Administrator
 Region I
 ENGINEERING BRANCH
 By: _____
 REGIONAL COUNCIL
 By: _____

ENGINEER:
 HOMER A. HUNTER ASSOCIATES
 By: _____

CONTRACTOR:

 By: _____

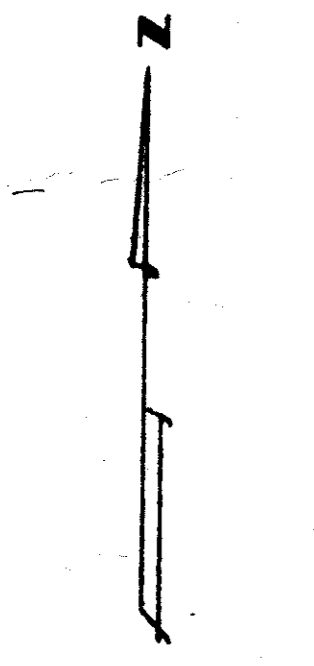
HHA PROJECT NO. PFL-V-41-65
 Sheet 1 of 1

ADDISON, TEXAS
WATER DISTRIBUTION SYSTEM

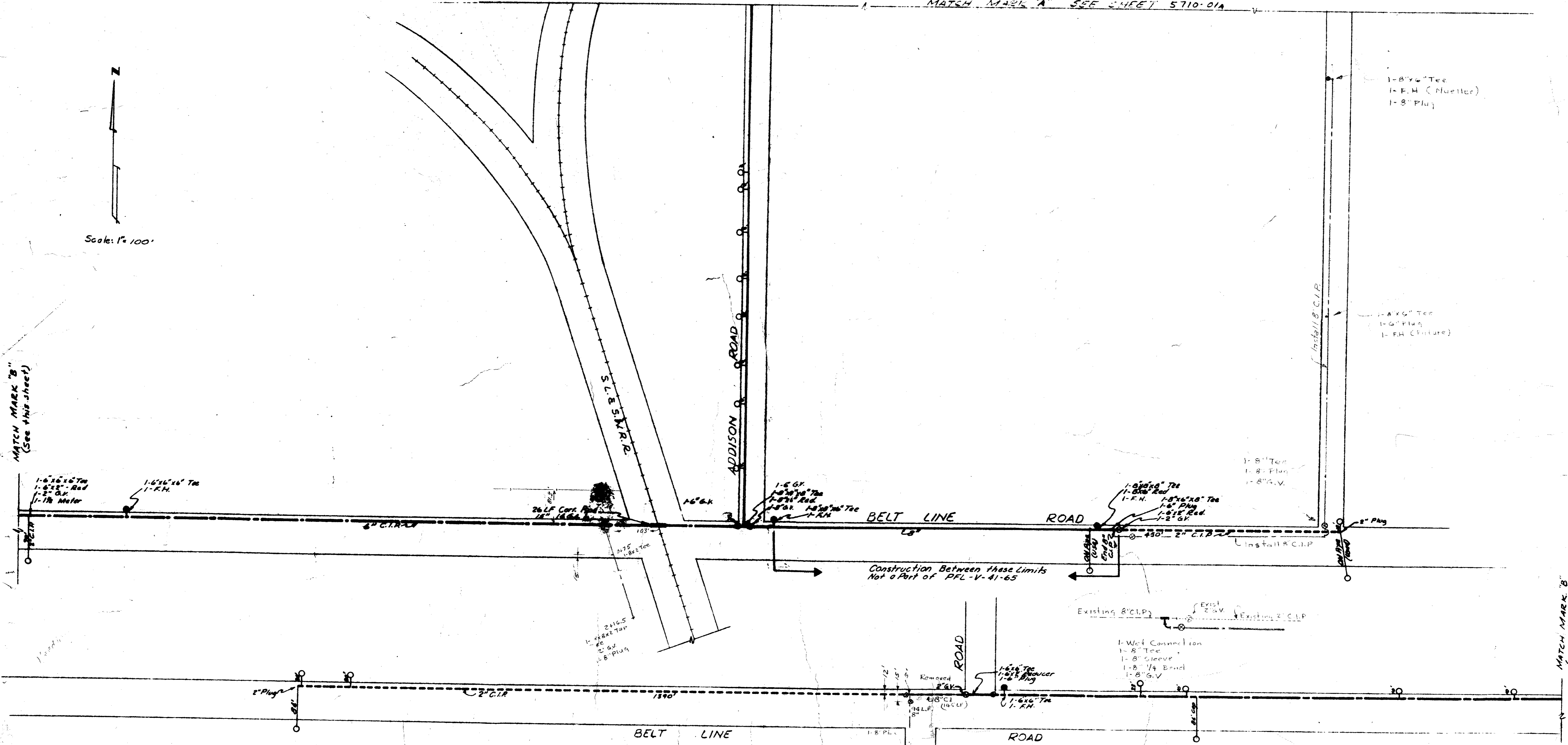
HOMER A. HUNTER ASSOCIATES CONSULTING ENGINEERS DALLAS, TEXAS		
DESIGNED: E.M.R.	APPROVED: H.A.H.	
5710-01		June, 1958 Rev. Jan. 1959

02312

MATCH MARK 'A' SEE SHEET 5710-01A



Scale: 1" = 100'



MATCH MARK 'B' (See this sheet)

MATCH MARK 'B' (See this sheet)

Construction Between these Limits Not a Part of PFL-V-41-65

LEGEND

- 8" CAST IRON PIPE
- - - 6" CAST IRON PIPE
- - - 2" CAST IRON PIPE
- ⊗ GATE VALVE
- FIRE HYDRANT
- ⊖ COPPER SERVICE & METER & DISTANCE - METER TO MAIN

H.H.F.A. PROJECT NO. PFL-V-41-65 SHEET 1B of 4

ADDISON, TEXAS WATER DISTRIBUTION SYSTEM

HOMER A. HUNTER ASSOCIATES CONSULTING ENGINEERS DALLAS, TEXAS

DESIGNED: E.M.R. APPROVED: H.A.H.

5710-01B REV. JAN. 1969

