

ADDISON ROAD PAVEMENT REHABILITATION

(FROM ARAPAHO ROAD TO NORTH TOWN LIMITS)

TOWN OF ADDISON ADDISON, TEXAS

BID NO. 15-31

MAYOR:

Todd Meier

CITY COUNCIL:

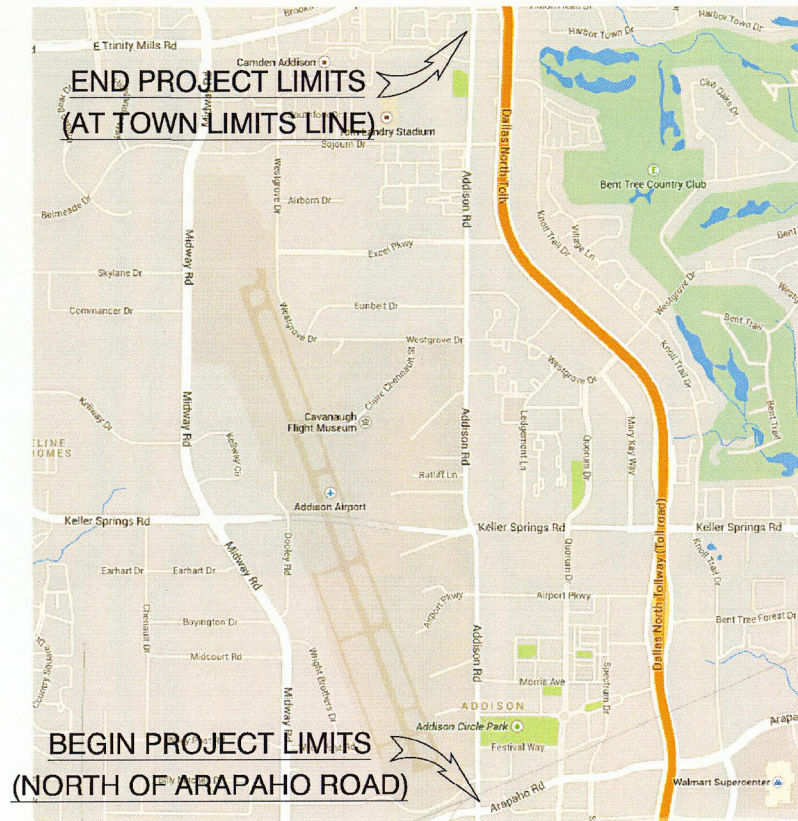
- Blake W. Clemens (Mayor Pro Tem)
- Janelle Moore (Deputy Mayor Pro Tem)
- Bruce Arfsten
- Mary Carpenter
- Chris DeFrancisco
- David Heape

DEPUTY CITY MANAGER:

CHERYL DELANEY

**DIRECTOR OF INFRASTRUCTURE AND
DEVELOPMENT SERVICES:**

LISA PYLES

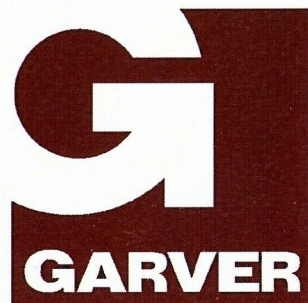


VICINITY MAP

NO SCALE

GARVER PROJECT NO. 14087020
TX ENGINEERING REGISTRATION NO. F-5713

MAY, 2015



3010 Gaylord Parkway
Suite 190
Frisco, TX 75034
(972) 377-7480

SHEET LIST TABLE		
SHEET NUMBER	SHEET TITLE	SHEET DESCRIPTION
01	CV	COVER SHEET
02	G-101	GENERAL NOTES
03	G-102	TYPICAL SECTIONS AND DETAILS
04	G-103	DETAILS
05-17	C-301 TO C-313	PAVEMENT REHABILITATION PLAN SHEET
18-30	PM-401 TO PM-413	PAVEMENT MARKINGS PLAN SHEET
31	TC-01	ALT #1 - TRAFFIC CONTROL NOTES
32-33	TC-02 TO TC-03	ALT #1 - TRAFFIC CONTROL PLAN - PHASE 1 AND PHASE 2
TxDOT RCPM09	TxDOT RCPM09	TxDOT RAILROAD CROSSING PAVEMENT MARKING TYPICAL DETAILS
TxDOT PM1-12	PM(1)-12 PM(2)-12 PM(3)-12 PM(4)-12	TxDOT TYPICAL STANDARD PAVEMENT MARKING DETAILS
TxDOT RCPM09	TxDOT RCPM09	TxDOT RAILROAD CROSSING PAVEMENT MARKING TYPICAL DETAILS
34-40	BL-01 TO BL-07	BORING LOCATIONS AND LOGS



REGISTRATION NO. F-5713



Digitally Signed
05/04/2015

REV.	DATE	DESCRIPTION

TOWN OF ADDISON
 ADDISON, TX
ADDISON ROAD PAVEMENT REHABILITATION FROM ARAPAHO ROAD TO NORTH TOWN LIMITS

COVER SHEET

JOB NO.: 14087020
DATE: MAY, 2015
DESIGNED BY: QGS
DRAWN BY: TWM

BAR IS ONE INCH ON ORIGINAL DRAWING
IF NOT ONE INCH ON THIS SHEET, ADJUST SCALES ACCORDINGLY.

DRAWING NUMBER
CV

SHEET NUMBER **01**

4/28/2015 2:15:00 PM
 WORKSPACE\Garver_2012\NGDP\WDC\Projects\2014\14087020 - Addison Rd Pavmt Rehab\Drawings\Alternative 3\ADS_ADR_CS_101.dgn



SM