



REGISTRATION NO. F-5713



Digitally Signed 05/04/2015

REV.	DATE	DESCRIPTION

ADDISON
TOWN OF ADDISON
ADDISON, TX
ADDITION ROAD PAVEMENT REHABILITATION FROM ARAPAHO ROAD TO NORTH TOWN LIMITS

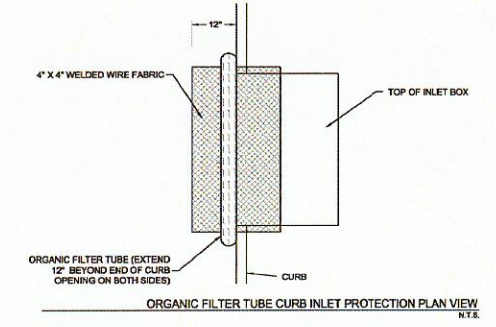
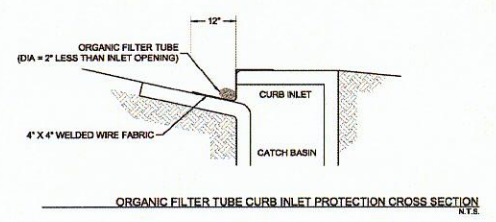
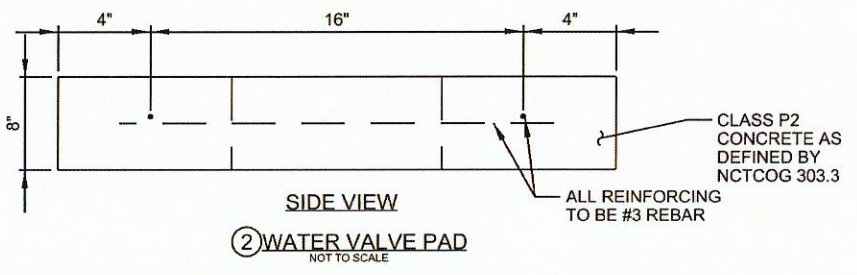
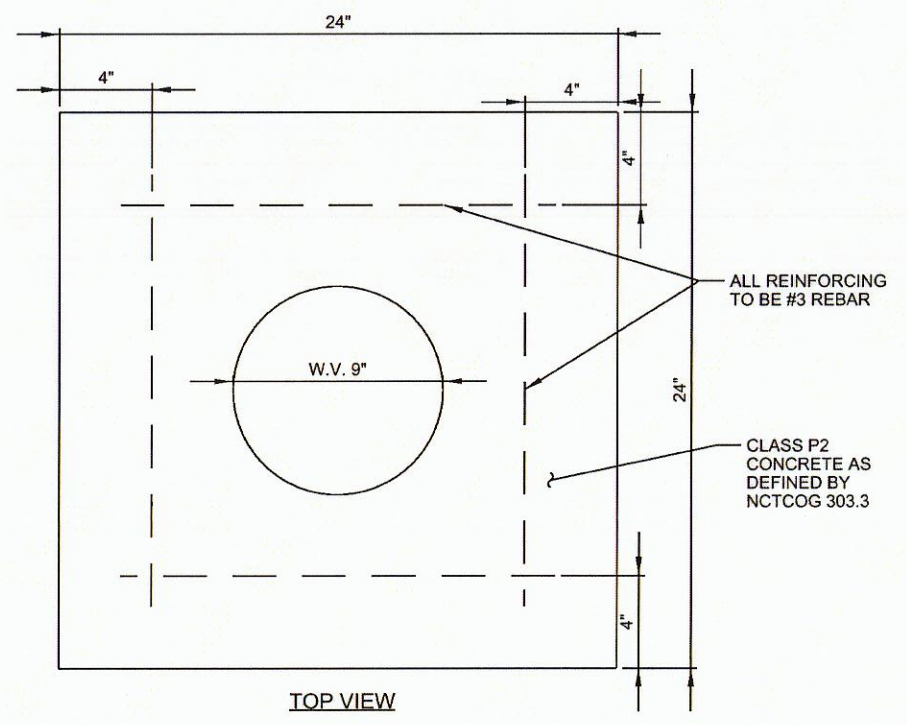
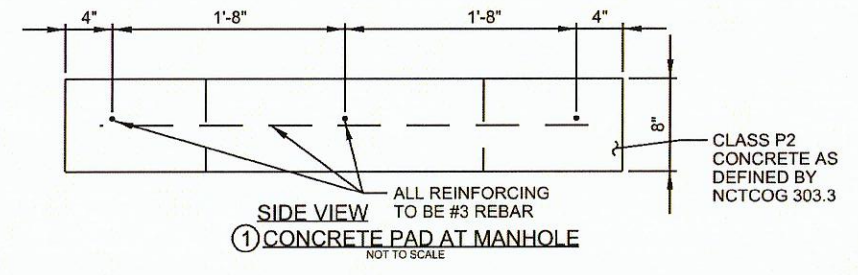
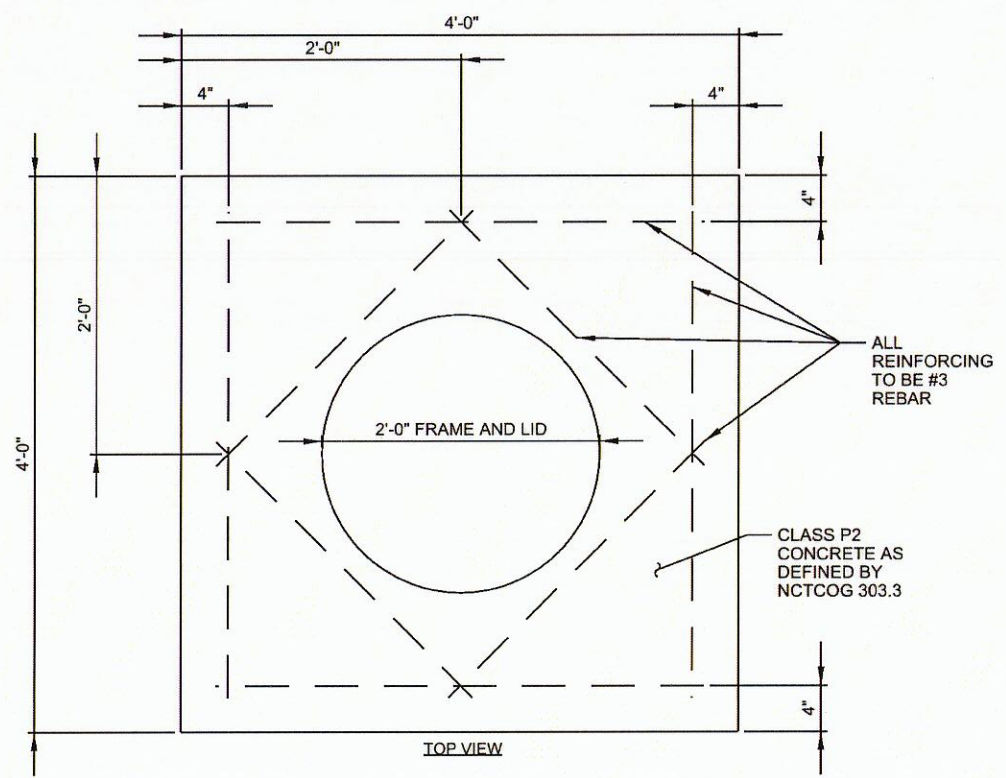
DETAILS

JOB NO.: 14087020
DATE: MAY, 2015
DESIGNED BY: QGS
DRAWN BY: TWM

BAR IS ONE INCH ON ORIGINAL DRAWING
IF NOT ONE INCH ON THIS SHEET, ADJUST SCALES ACCORDINGLY.

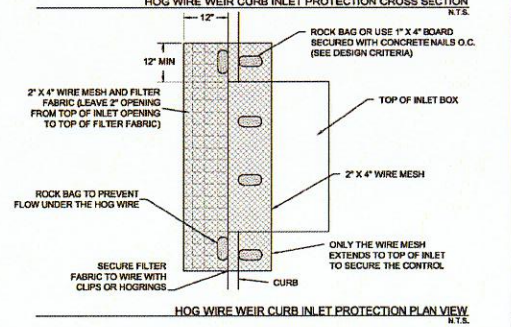
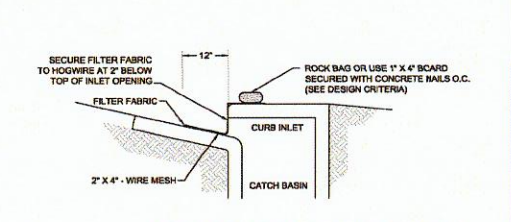
DRAWING NUMBER
G-103

SHEET NUMBER
04



NOTE: THIS CONTROL WILL DECREASE THE CAPACITY OF THE INLET. IT SHALL ONLY BE USED WHEN AN ENGINEER HAS DETERMINED THERE IS ADEQUATE STORAGE OR POSITIVE OVERFLOW.

Figure 3.6 Schematics of Organic Filter Tube Curb Inlet Protection (Source: Modified from City of Plano BMP SP-4)



NOTE: THIS CONTROL WILL DECREASE THE CAPACITY OF THE INLET. IT SHALL ONLY BE USED WHEN AN ENGINEER HAS DETERMINED THERE IS ADEQUATE STORAGE OR POSITIVE OVERFLOW.

Figure 3.7 Schematics of Hog Wire Weir Curb Inlet Protection (Source: Modified from City of Round Rock Detail E-03)

③ INLET PROTECTION DETAIL
NOT TO SCALE

NOTE: CONTRACTOR MAY USE EITHER DETAIL.

4/28/2015 1:57:23 PM
WORKSPACE: Garver_2012
IGDFWD: C:\projects\2014\14087020 - Addison Rd Pavm Rehab\Drawings\Alternative 3\ADS_ADR_TYP_G-103.dgn