

ROADWAY MARKERS SPECIFICATIONS

COLOR OF MARKERS :

- A : YELLOW BODY - AMBER REFLECTOR
- C : WHITE BODY - CRYSTAL REFLECTOR
- R : RED BODY - RED REFLECTOR

REFLECTIVE FACES :

- I : ONE FACE REFLECTORIZED
- II : BOTH FACES REFLECTORIZED

SIZES AND KINDS OF MARKERS :

- 4 : 4 INCH LANE MARKER
- 6 : 6 INCH CHANNEL MARKER OR JIGGLE BAR
- 8 : 8 INCH CHANNEL MARKER

CHANNEL MARKERS :

- 6 or 8 INCHES (ROUND)

JIGGLE BARS :

- 6 INCHES (SQUARE)

EXAMPLES OF ROADWAY MARKERS :

- TYPE II-CR-4 : 4 INCH REFLECTORIZED LANE MARKER, ONE FACE REFLECTS CRYSTAL, ONE FACE REFLECTS RED LIGHT.
- TYPE A-4 : 4 INCH NON-REFLECTIVE YELLOW LANE MARKER
- TYPE I-A-6 : 6 INCH REFLECTORIZED CHANNEL MARKER, ONLY ONE FACE REFLECTS AMBER LIGHT

EPOXY ADHESIVE

TYPE II and II-M :

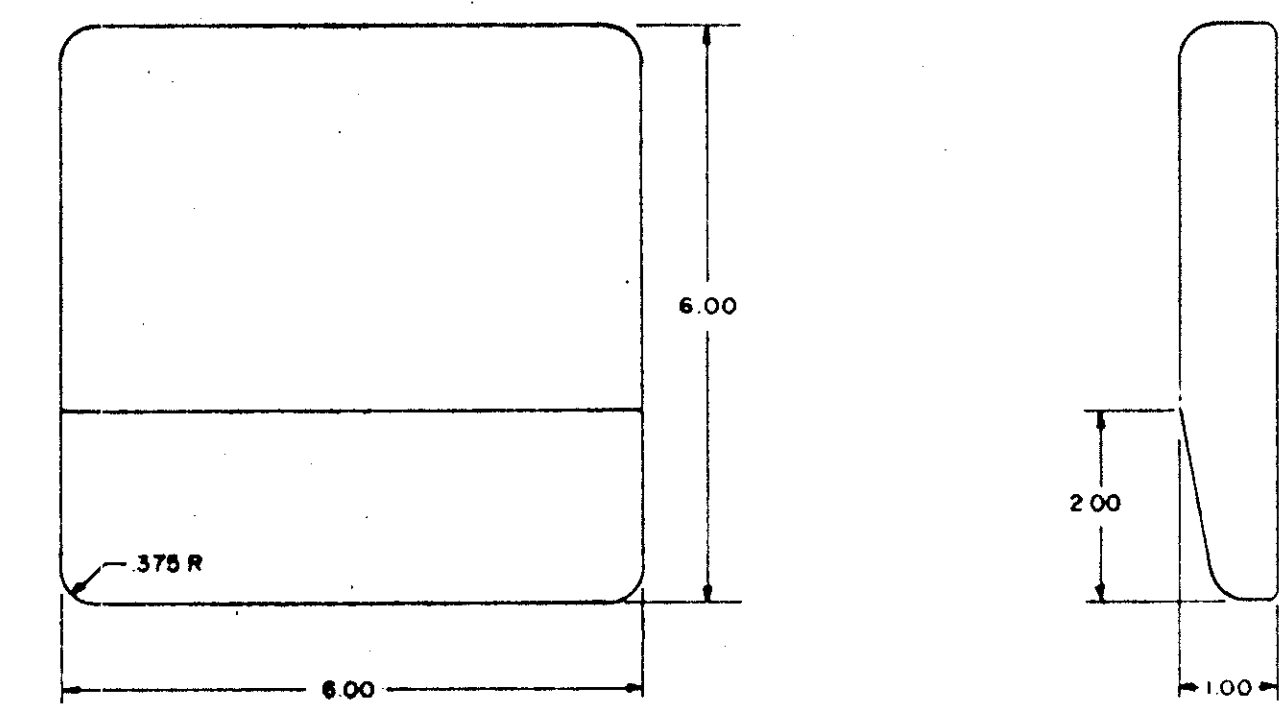
MEDIUM SETTING MARKER ADHESIVE

TYPE III and III-M :

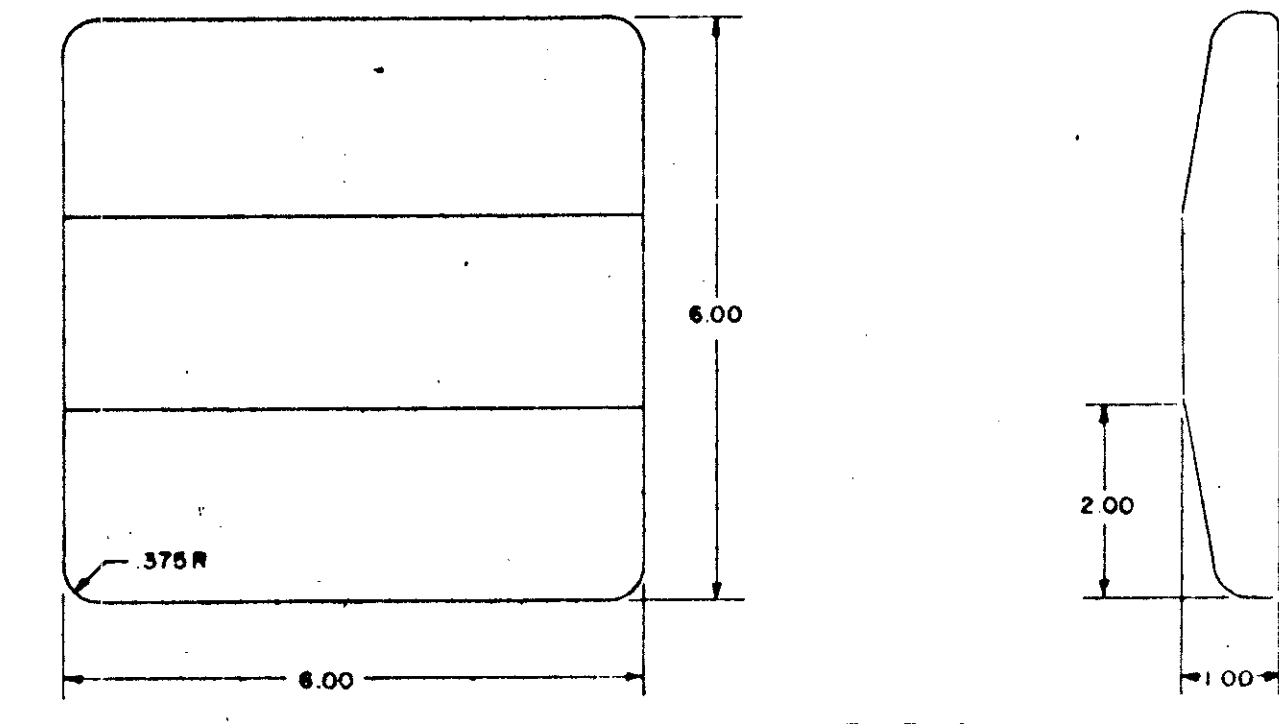
STANDARD SETTING MARKER ADHESIVE

PAVEMENT TEMP., F	APPROXIMATE SET TIME, HOURS	
	TYPE II & II-M	TYPE III & III-M
115	0.5	1
95	1	2
77	2	4
60	4	8
50	-	-

NOTE: ALL EPOXY SHALL BE MACHINE MIXED UNLESS PRIOR WRITTEN APPROVAL IS OBTAINED FROM CITY ENGINEER ALLOWING HAND MIXING.

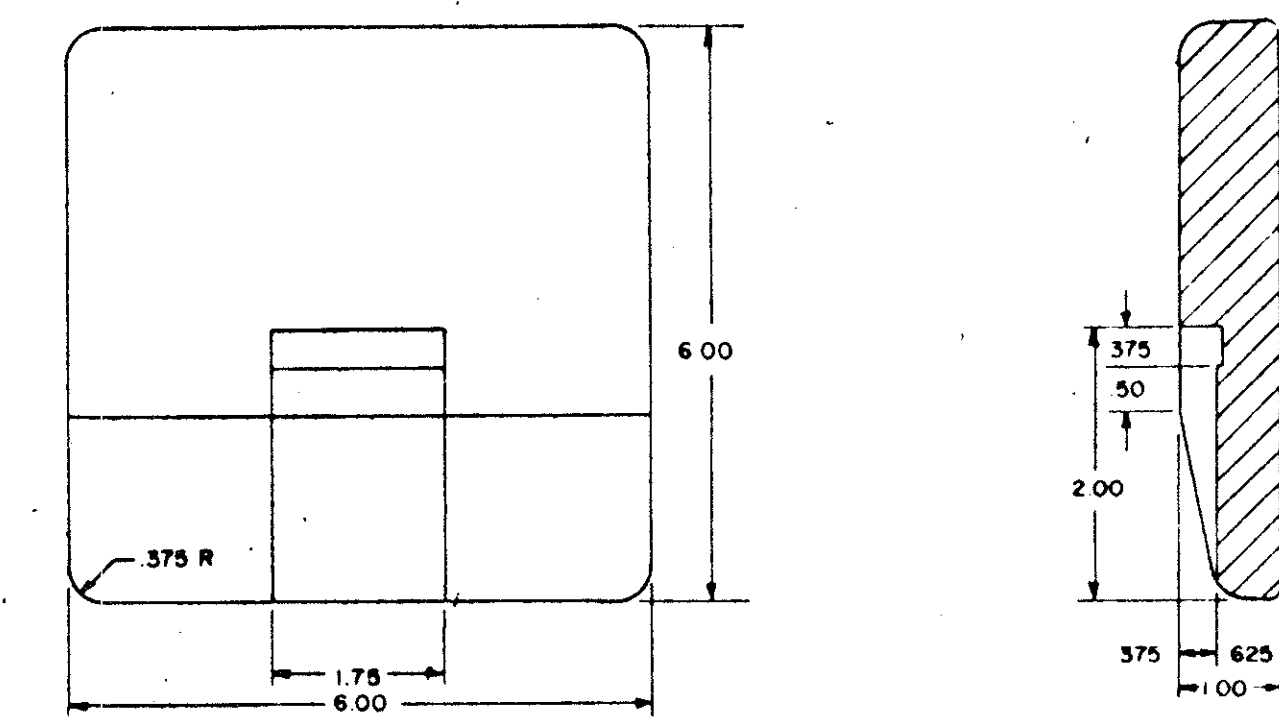


TYPE - 6

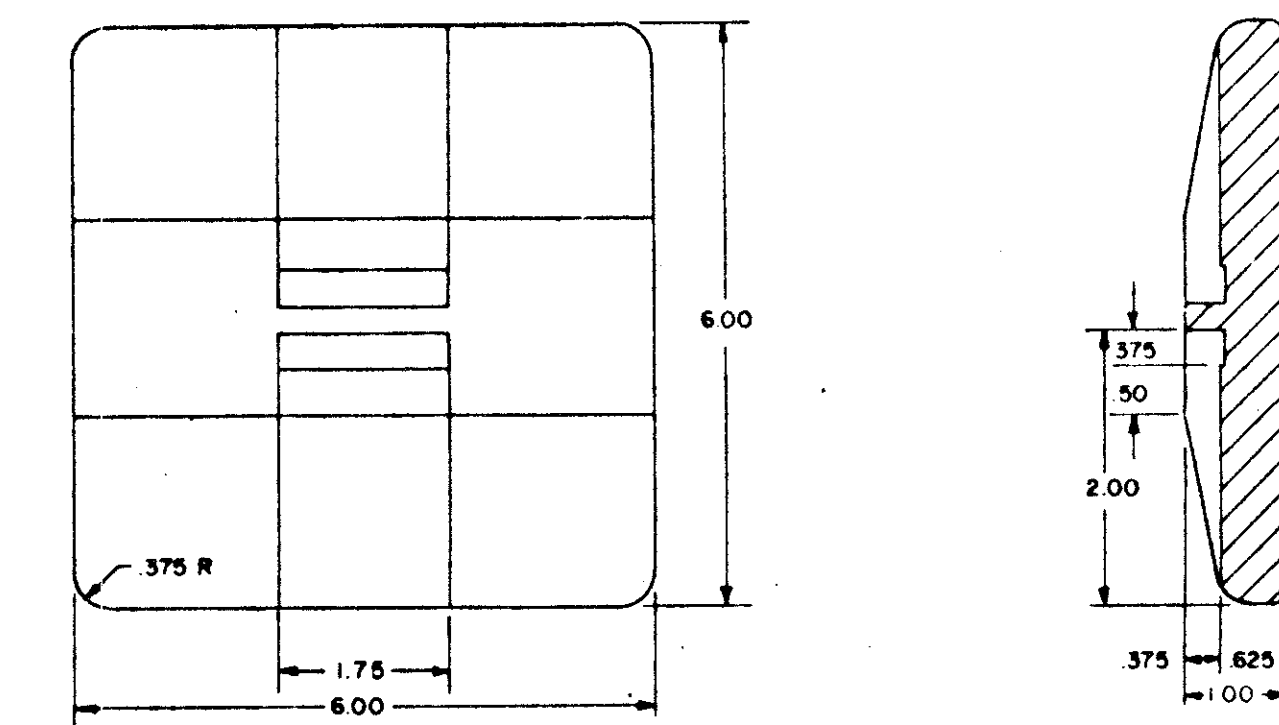


TYPE - 6

NON-REFLECTIVE

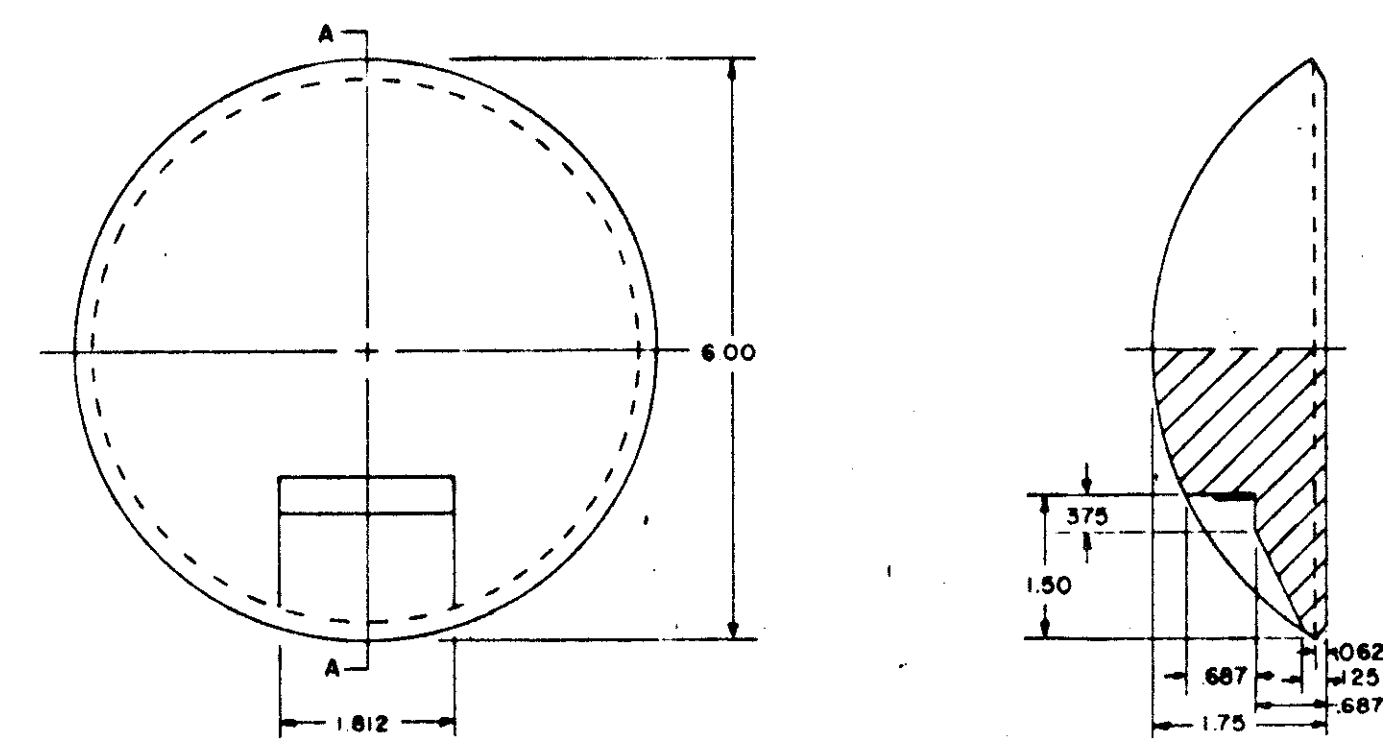


TYPE I - 6

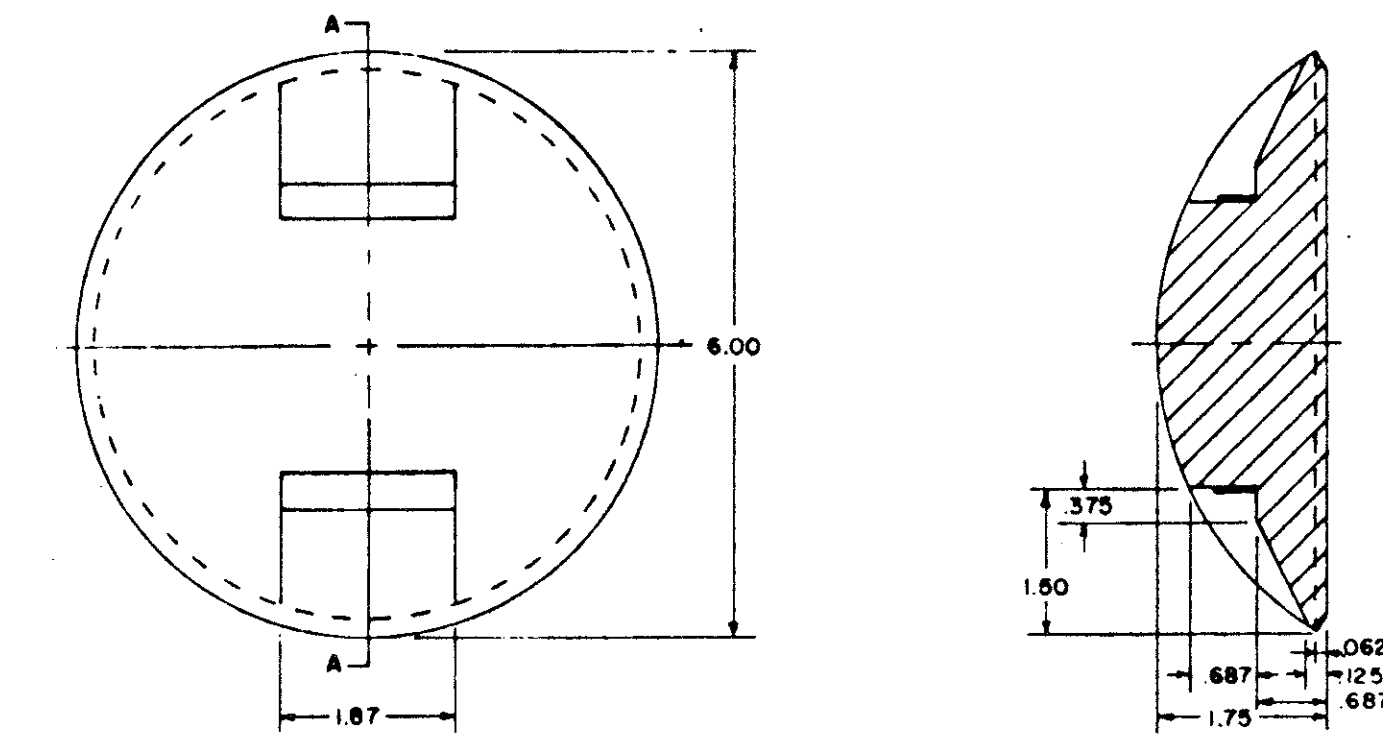


TYPE II - 6

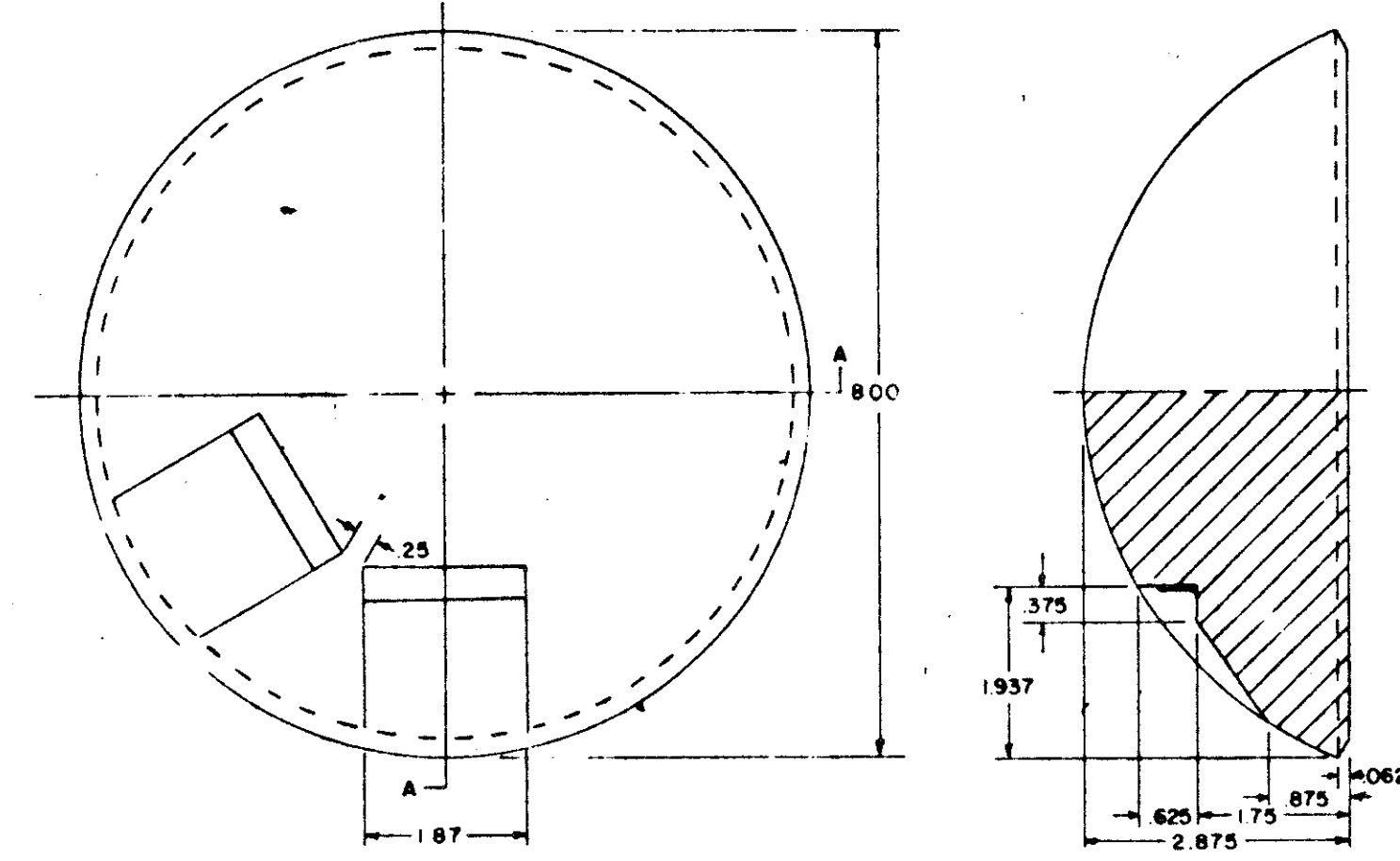
REFLECTIVE JIGGLE BARS



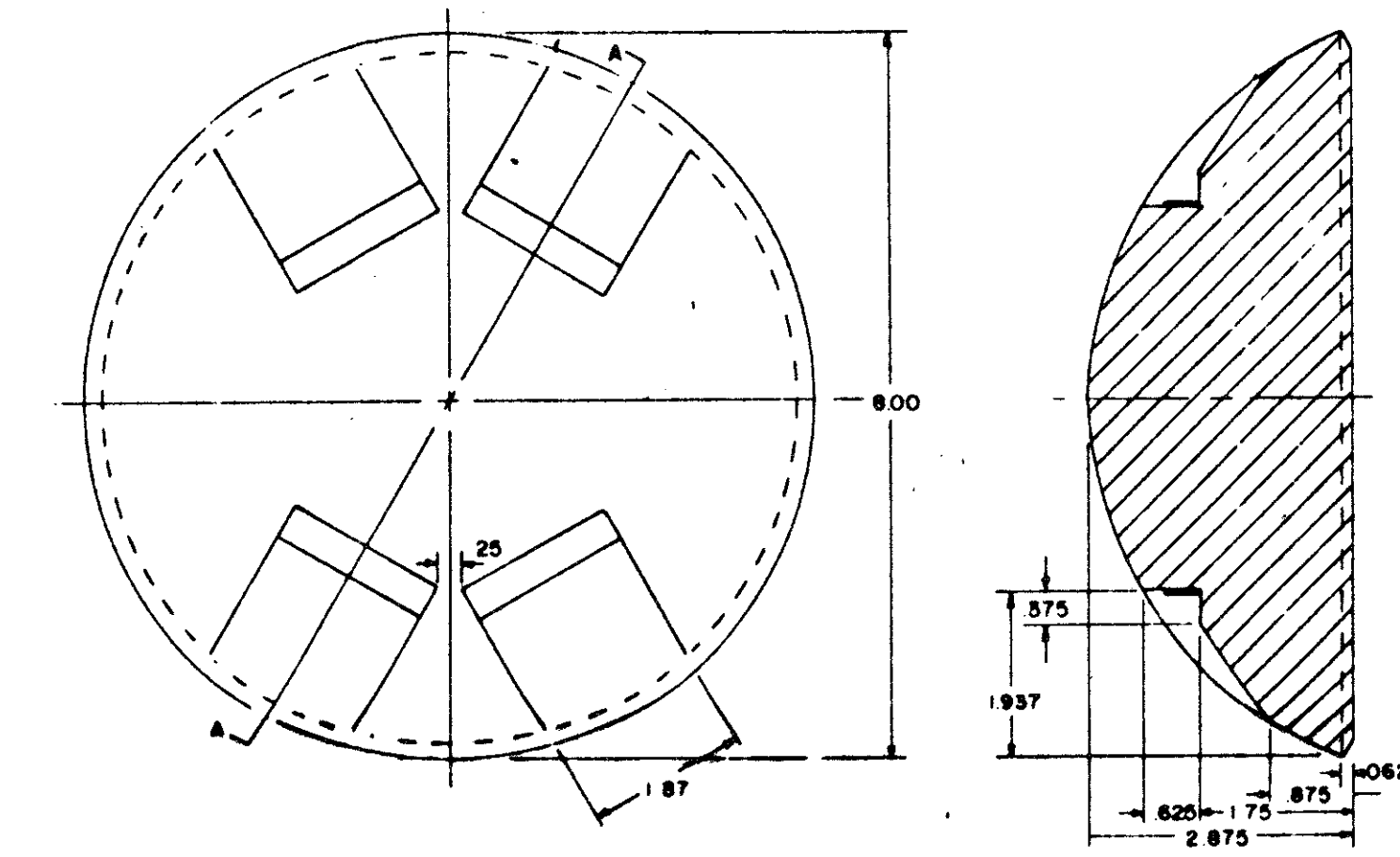
TYPE I - 6



TYPE II - 6

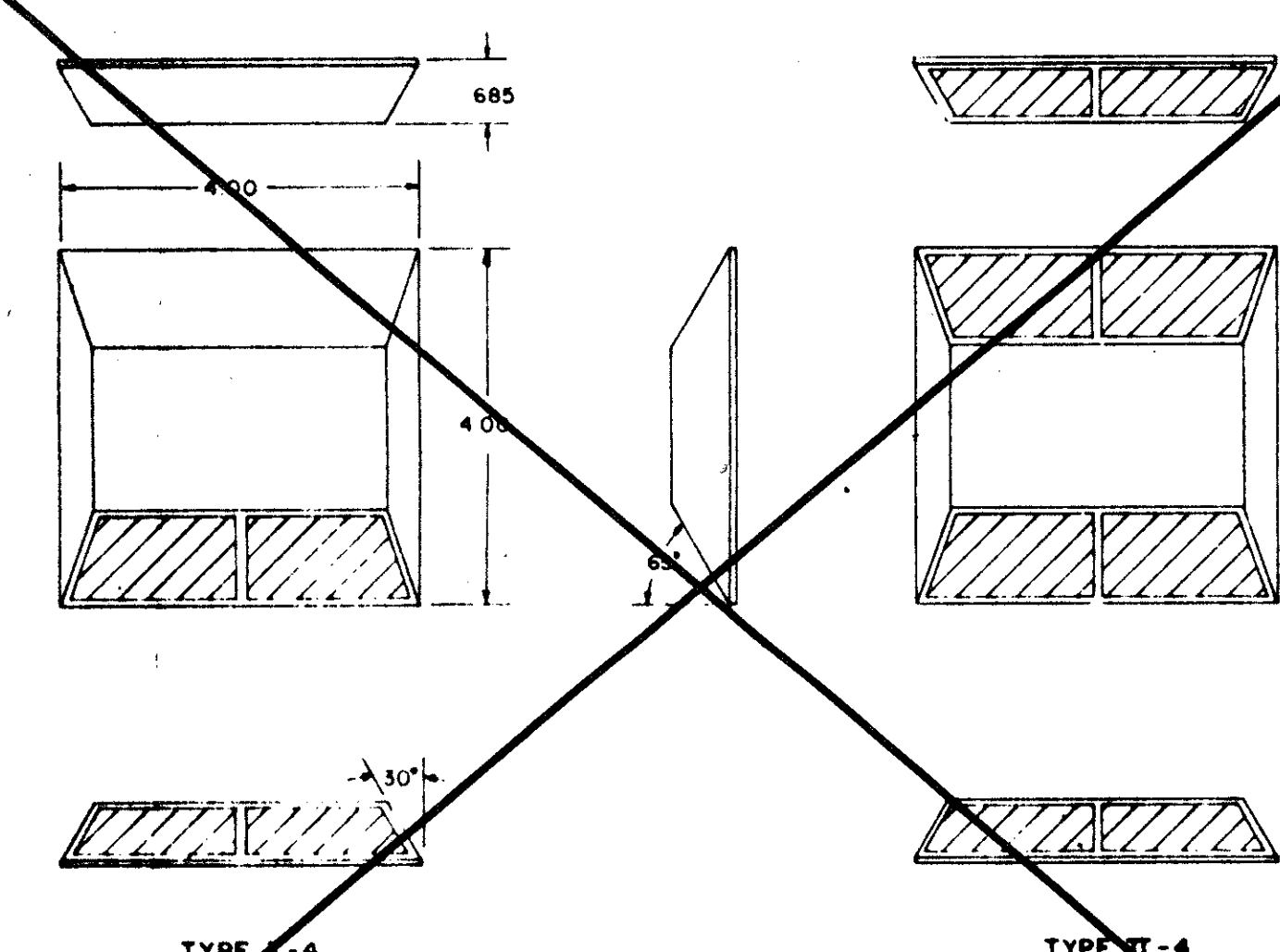


TYPE I - 8



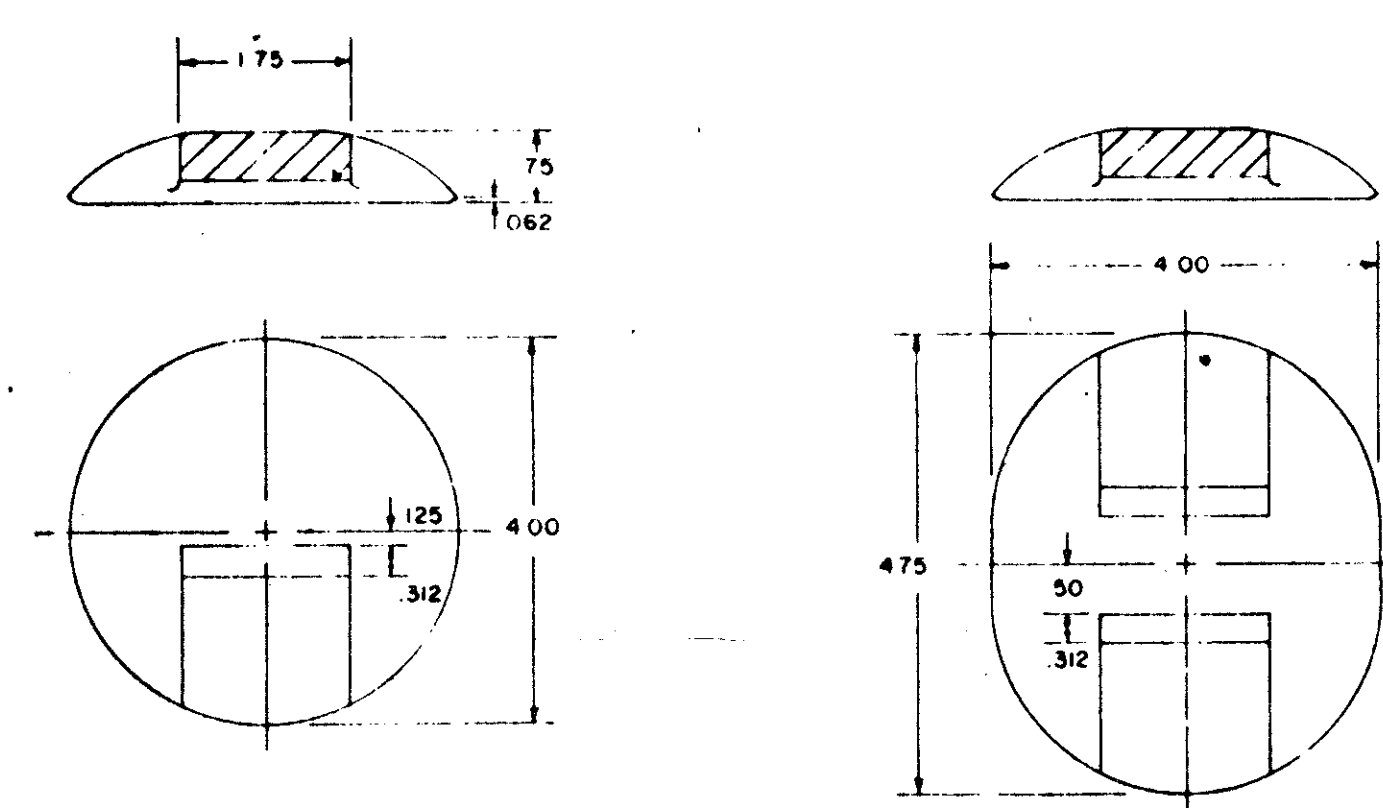
TYPE II - 8

CHANNEL MARKERS



TYPE I - 4

REFLECTIVE
STIMSONITE, RAY-O-LITE OR APPROVED EQUAL LANE MARKERS ARE TO BE USED ON A CONCRETE ROADWAY

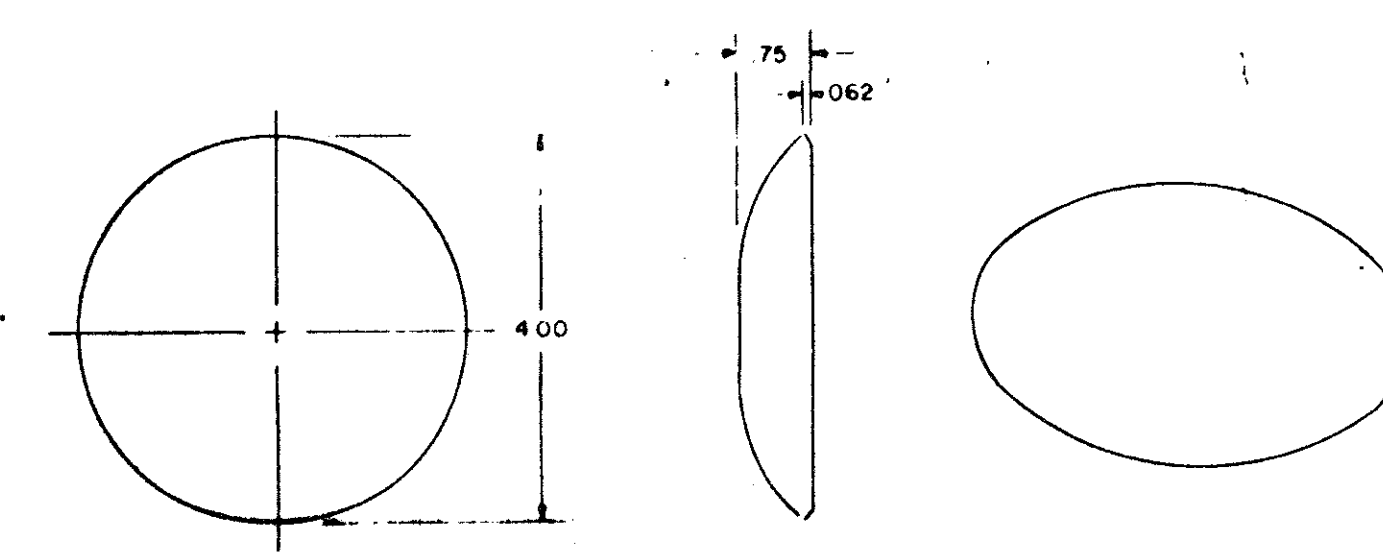


TYPE II - 4



TYPE I - 4

REFLECTIVE
AMERICAN CLAY CERAMIC OR APPROVED EQUAL LANE MARKERS ARE TO BE USED ON A ASPHALT ROADWAY



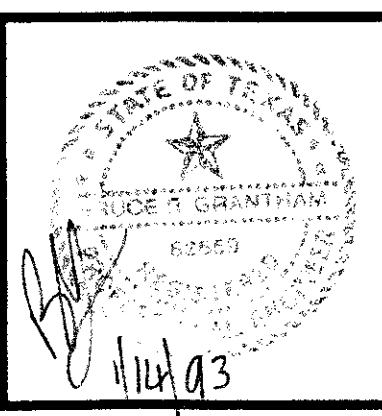
TYPE - 4

NON-REFLECTIVE
AMERICAN CLAY CERAMIC OR APPROVED EQUAL LANE MARKERS CAN BE USED ON ASPHALT AND CONCRETE ROADWAYS

LANE MARKERS

NO.	REVISION	BY	DATE

DESIGNED BY: _____
 DRAWN BY: _____
 CHECKED BY: _____
 SCALE: _____
 DATE: _____



ESPEY, HUSTON & ASSOCIATES, INC.
 Engineering & Environmental Consultants
 13800 Montfort Drive Suite 230 Dallas, Texas 75240
 (214) 387-0771

PAVEMENT MARKING DETAILS
 RAILROAD CROSSING IMPROVEMENTS AND
 TRACK REALIGNMENT FOR ADDISON ROAD
 for
 THE TOWN OF ADDISON

SHEET NO. 13
 OF 15 SHEETS
 JOB NO. 14163