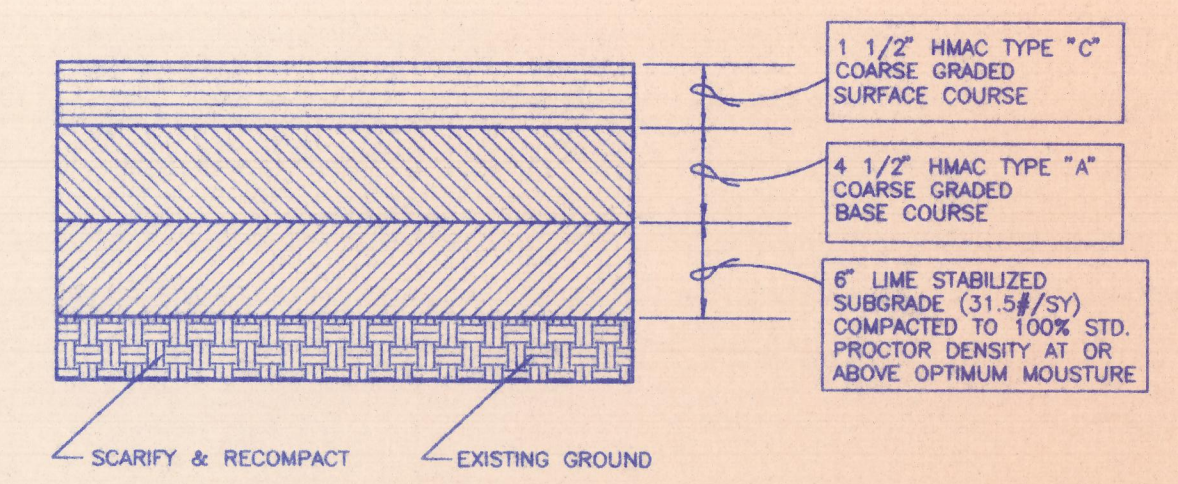
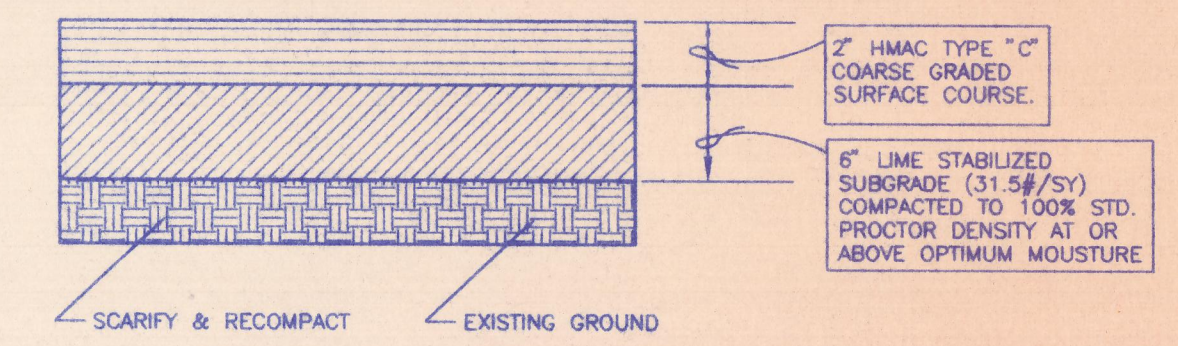


**CONCRETE PAVEMENT SECTION**  
(TRUCK DOCKS & DUMPSTER PADS)  
N.T.S.

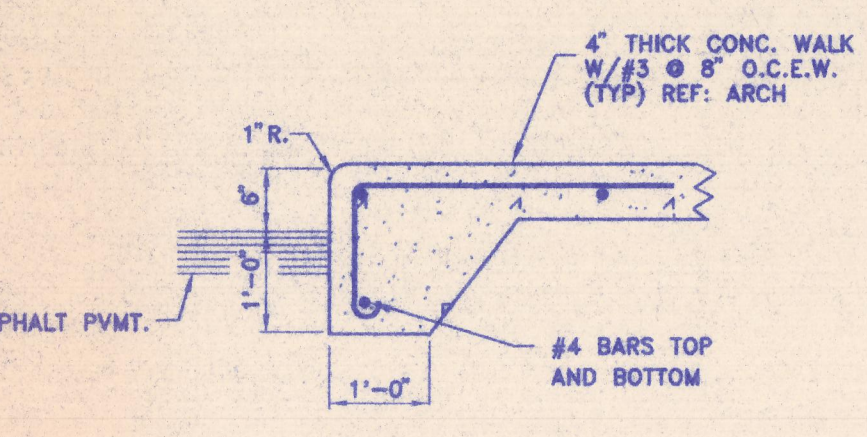
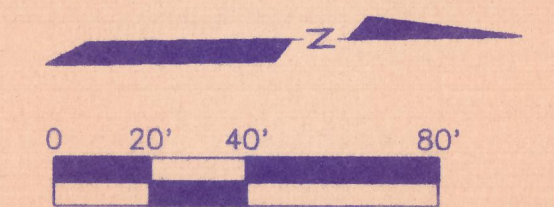


**HEAVY DUTY ASPHALT PAVEMENT SECTION**  
N.T.S.

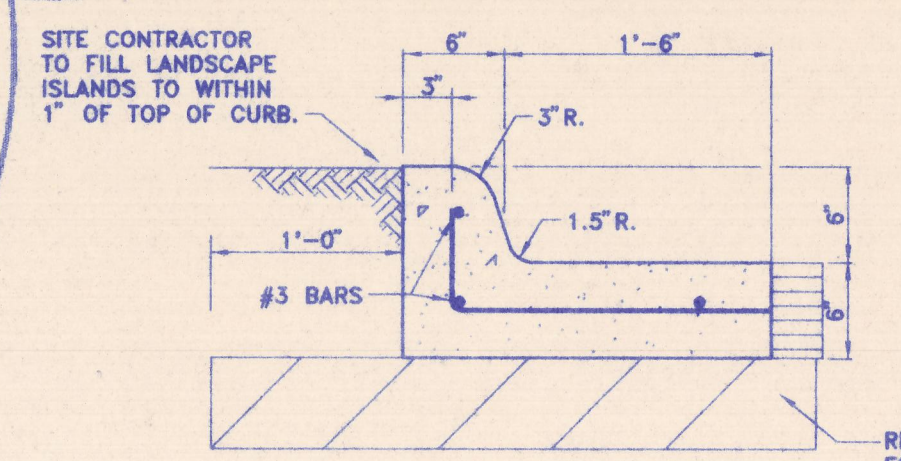


**LIGHT DUTY ASPHALT PAVEMENT SECTION**  
N.T.S.

- LEGEND**
- REMOVE EXISTING PAVEMENT
  - HEAVY DUTY ASPHALT PAVING
  - LIGHT DUTY ASPHALT PAVING
  - 7" REINF. CONCRETE PAVING
  - 1" ASPHALT OVERLAY

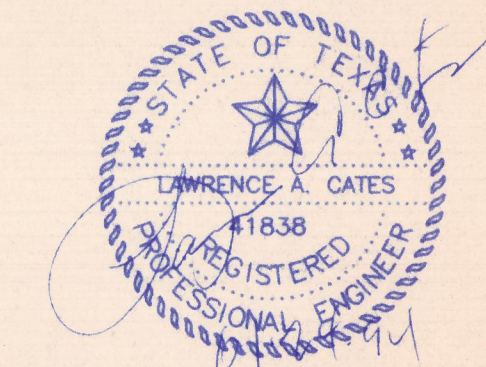


**0.2 TURN DOWN SIDEWALK DETAIL**  
N.T.S.



**0.1 MONOLITHIC CURB DETAIL**  
N.T.S. (W/ASPHALT)

THE SEAL APPEARING ON THIS DOCUMENT WAS AUTHORIZED BY LAWRENCE A. CATES, P.E. 41838 ON 01/21/94



1	6/28/94	ADDED DUMPSTER PAD WEST SIDE OF BABY SUPERSTORES
2	5/12/94	ADDED BABY SUPERSTORES
3	7/24/94	ADDED 1" ASP. OVERLAY
4	2/07/94	REV. LIMITS OF SITE CONSTR. ADDED CONC. PAD @ COMPU-SA CORNER
REV	DATE	REVISIONS

PAVING PLAN						
COMP USA						
ADDISON TOWN CENTER						
TOWN OF ADDISON, TEXAS						
LAWRENCE A. CATES & ASSOC. CONSULTING ENGINEERS DALLAS, TEXAS						
DESIGN	DRAWN	DATE	SCALE	NOTES	FILE	NO.
LAC	LAC	1/21/94	1"=40'	D.P.	93059 PAVPLAN.DWG	C-4

C:\DWG5\940448-B-PAVPLAN Thu Jun 9 11:18:12 1994