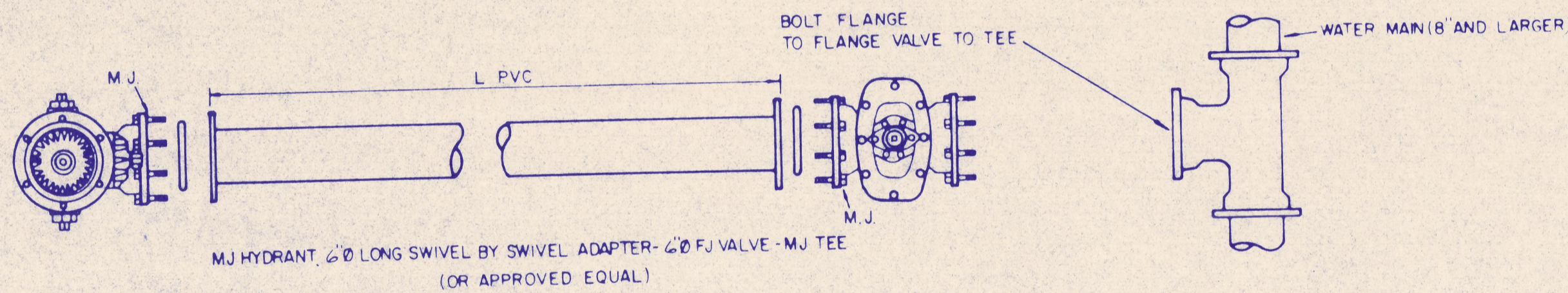
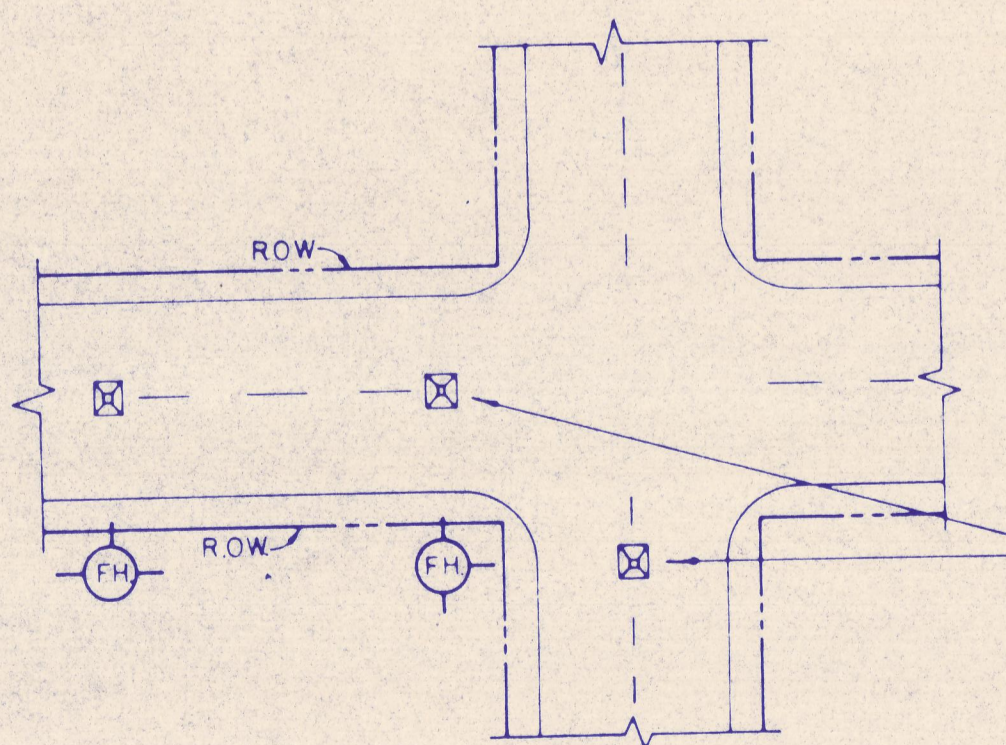


**GATE VALVES AND VALVE BOXES.**

- GATE VALVES SHALL BE IRON BODY, BRONZE OR BRASS MOUNTED, NON-RISING STEM, PARALLEL SEAT TYPE VALVES SHALL BE OF EQUAL OR GREATER PRESSURE CLASS THAN THE PIPING IN WHICH THEY ARE TO BE INSTALLED.
- VALVE BOXES SHALL BE CAST IRON AND SHALL BE OF SUFFICIENT LENGTH AND DIAMETER TO OPERATE ALL VALVES BURIED IN THE GROUND COVERS SHALL BE MARKED "WATER" THE BOXES SHALL REST ON THE VALVE AND BE ADJUSTED SO THAT THE COVER MAY BE SET FLUSH WITH THE FINISHED GRADE.

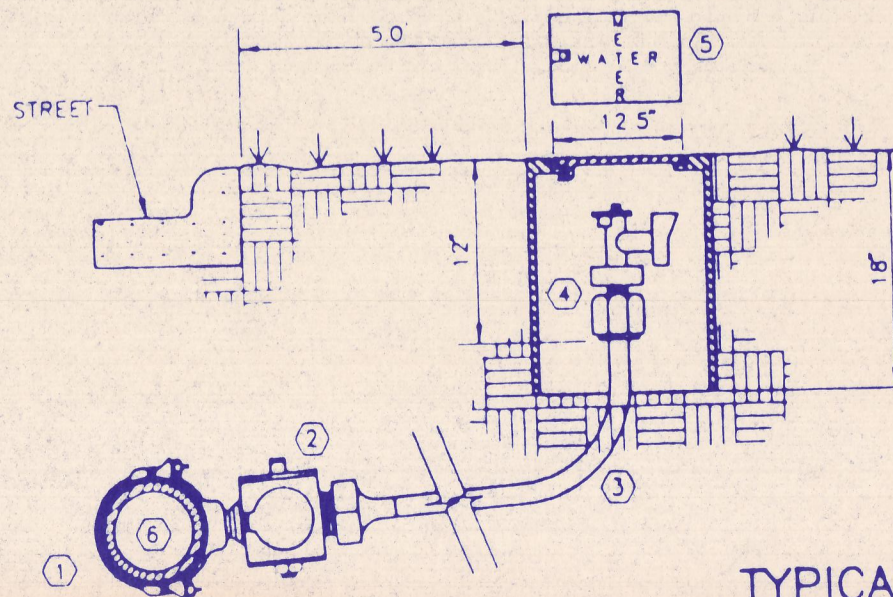


**TYPICAL FIRE HYDRANT INSTALLATION**

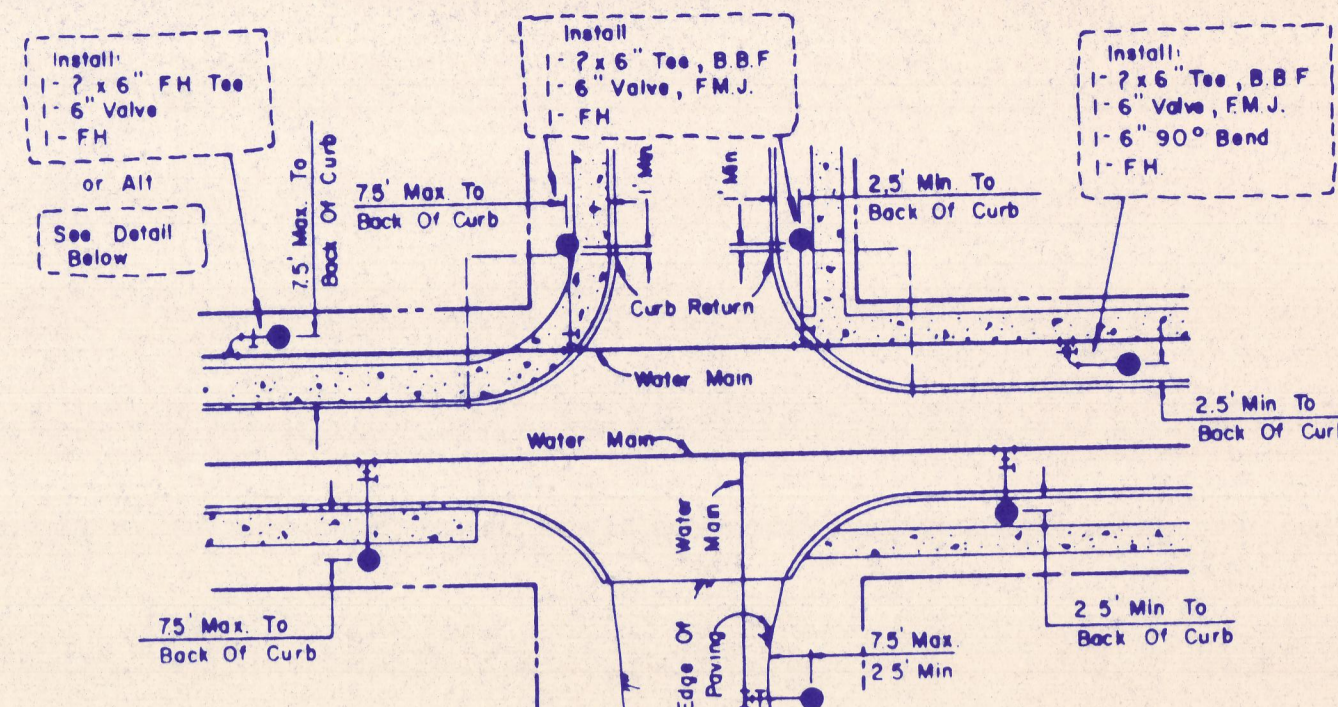


**TYPICAL FIRE HYDRANT REFLECTOR INSTALLATION**

A BLUE STIMSONITE FIRE-LITE REFLECTOR (OR APPROVED EQUAL) TO BE PLACED IN THE CENTER OF STREET OPPOSITE FIRE HYDRANTS THE INSTALLATION OF THIS REFLECTOR SHALL BE AS PRESCRIBED BY THE MANUFACTURER.



**TYPICAL WATER SERVICE DETAIL**

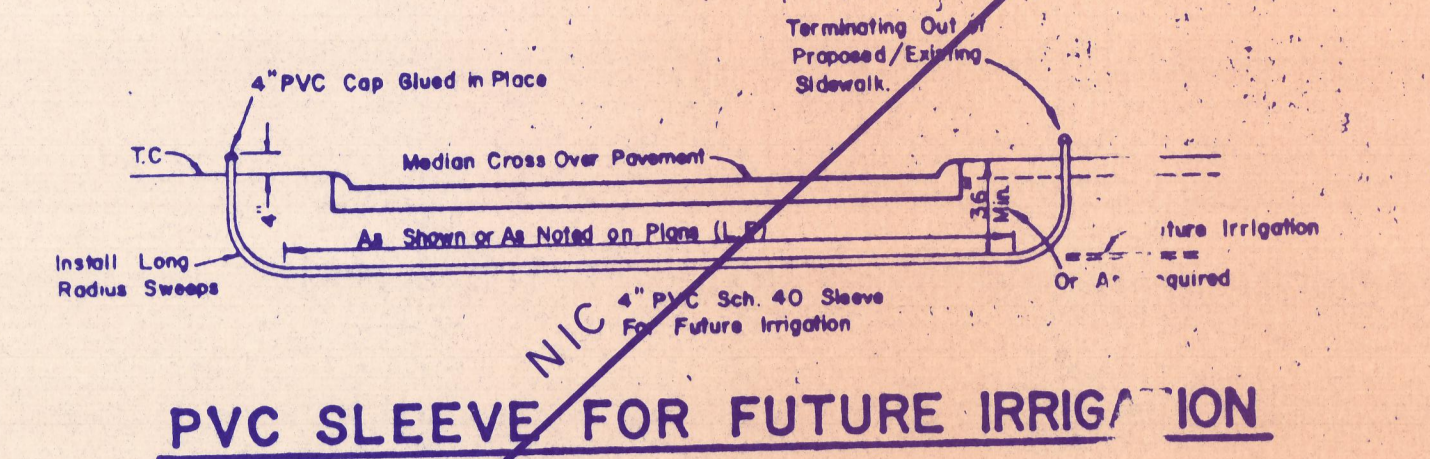


**ELEVATION VIEW OF FIRE HYDRANT**

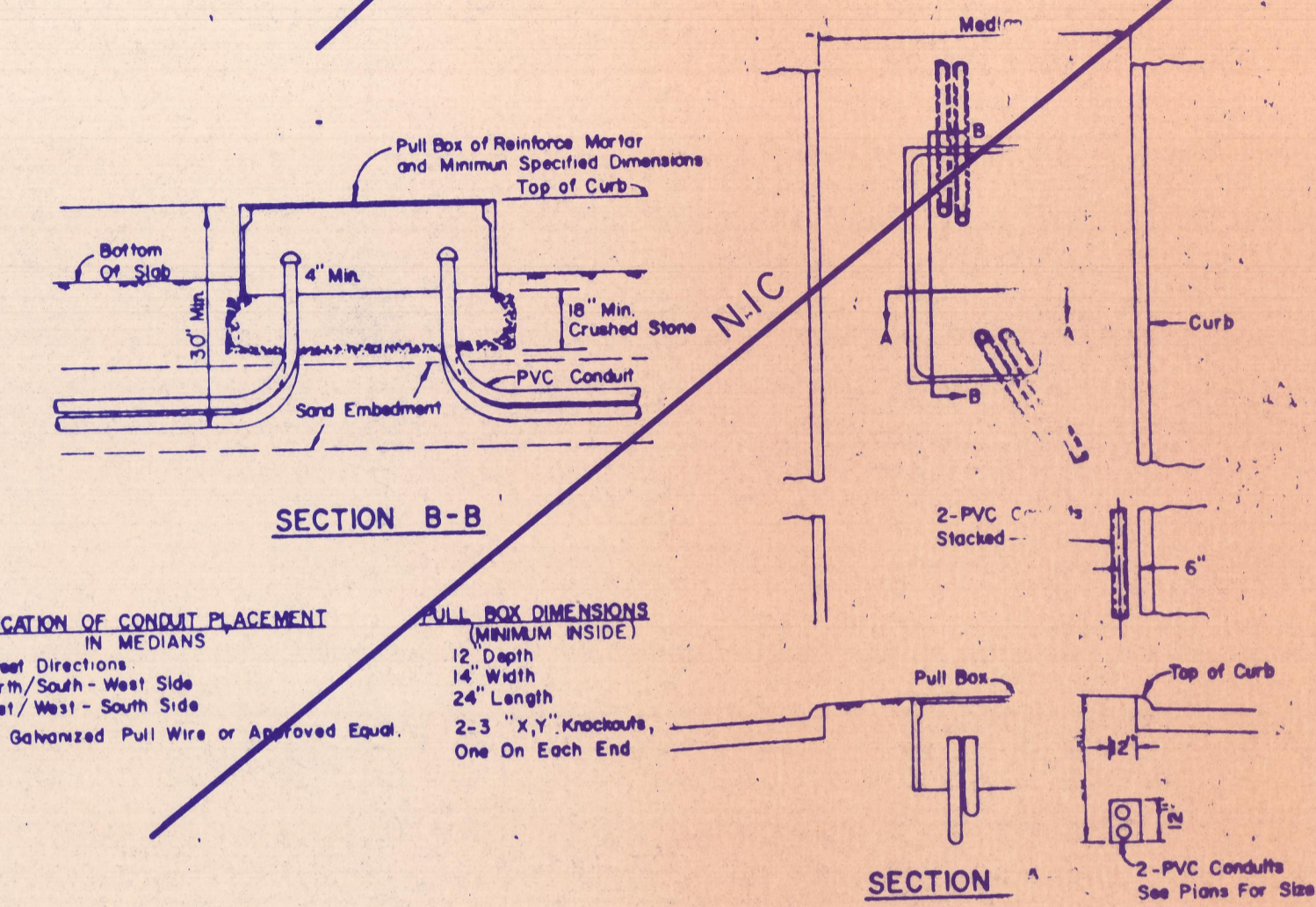
**GENERAL NOTES**

- 6" OF FH BARREL SHALL BE NOT LESS THAN 60" OR MORE THAN 90" FROM BACK OF CURB OR EDGE OF PAVEMENT.
- DO NOT SET FH IN AN EXISTING OR PROPOSED SIDEWALK, UNLESS OTHERWISE NOTED.
- ALL FH TEES SHALL BE M.J. WITH ANCHORING ON THE BRANCH WITH M.J., M.J. & VALVE.
- SET FH ON THE LOT LINE EXTENDED WHEN POSSIBLE.
- ON PRIVATE CONTRACT, THE DEVELOPER/ENGINEER WILL STATE LOCATION & GRADE.
- NEVER PLACE FH WHERE FIRE TRUCK COULD NOT PARK BESIDE IT.

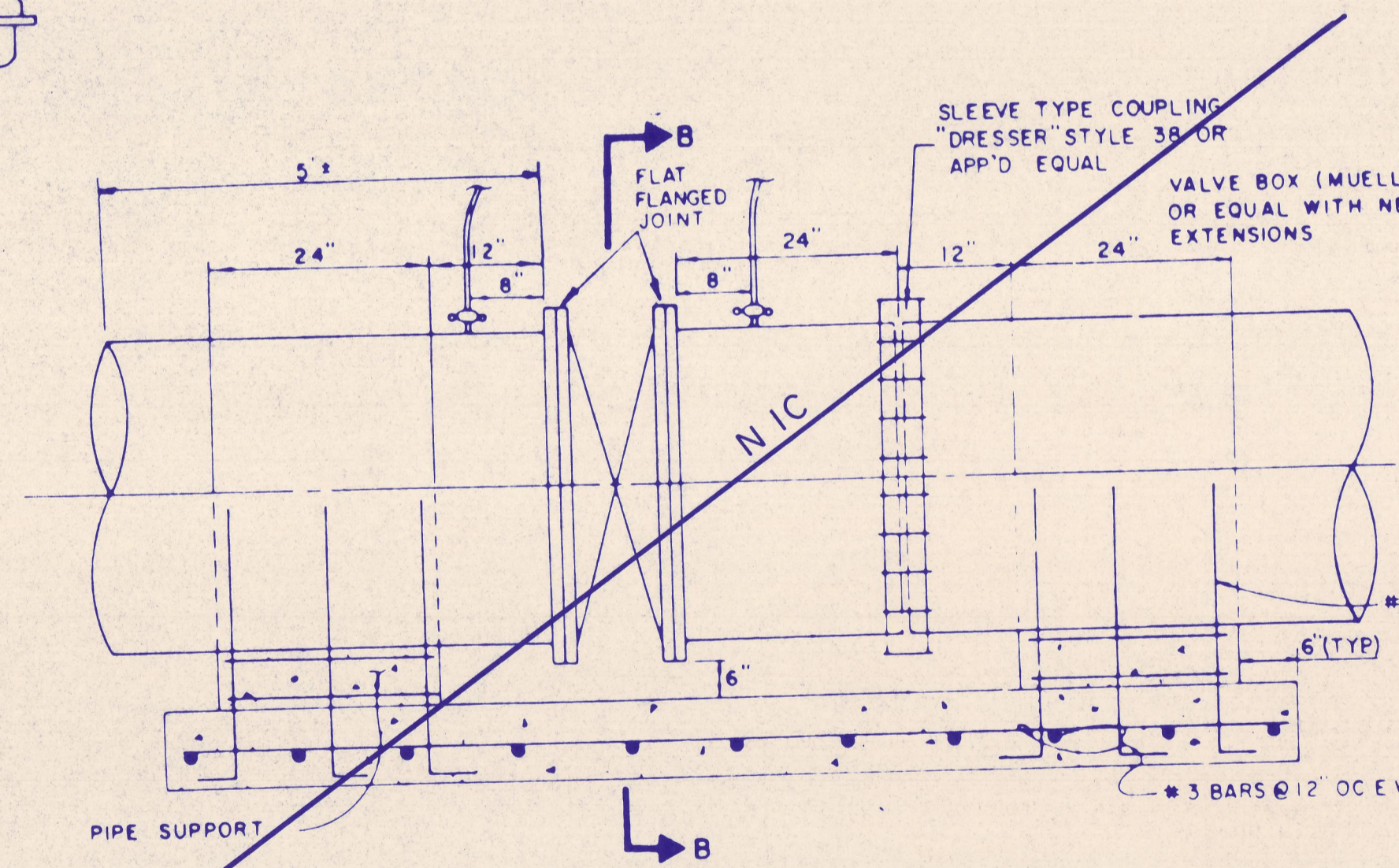
When No Curb Or Gutter Exists, Set FH On Front Slope Of Ditch With E Of Nozzle Equal To The Crown Of The Road.



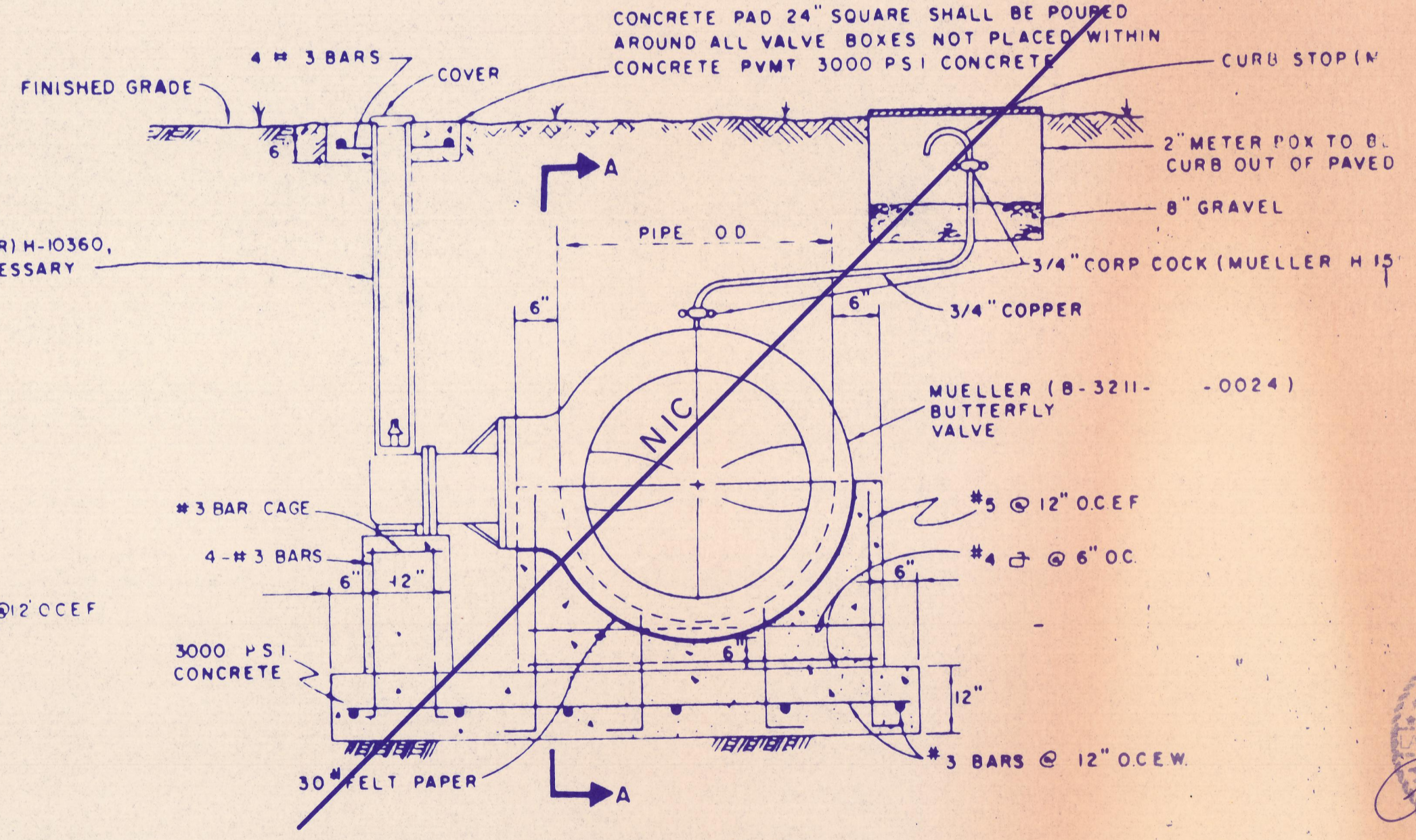
**PVC SLEEVE FOR FUTURE IRRIGATION**



**PULL BOX & CONDUIT DETAIL**



**BUTTERFLY VALVE DETAIL**



**SECTION B-B**

TOWN OF ADDISON, TEXAS			
DEPARTMENT OF ENGINEERING			
STANDARD CONSTRUCTION DETAILS			
WATER			
FIRE HYDRANTS, PULL BOXES AND VALVES			
Designed -	Drawn -	Date -	File No. -
Approved -	Checked -	Scale -	Sheet - SD 5

