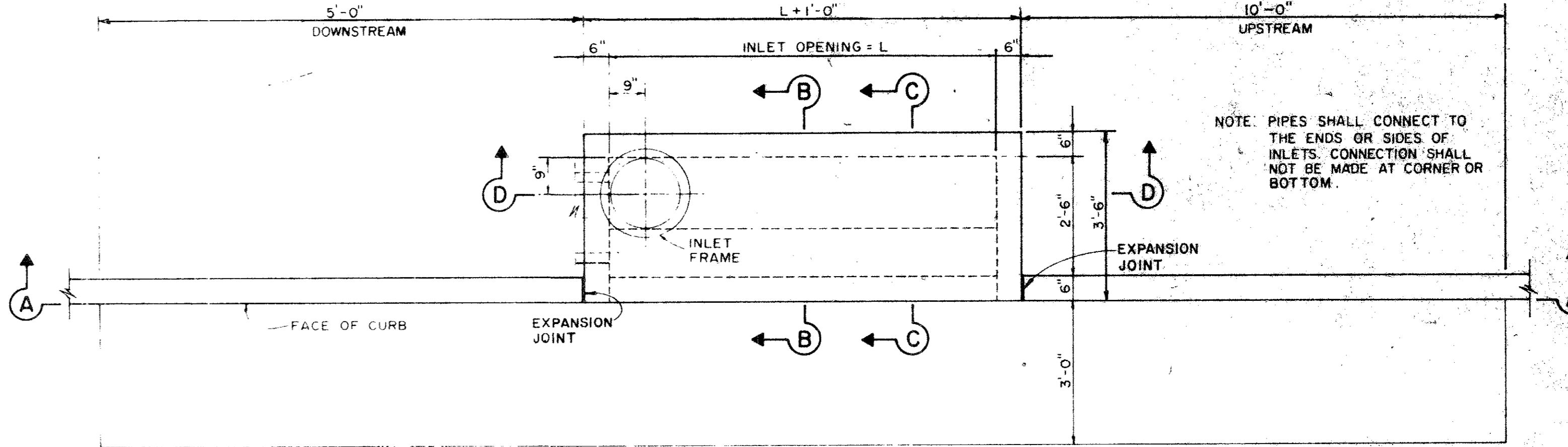
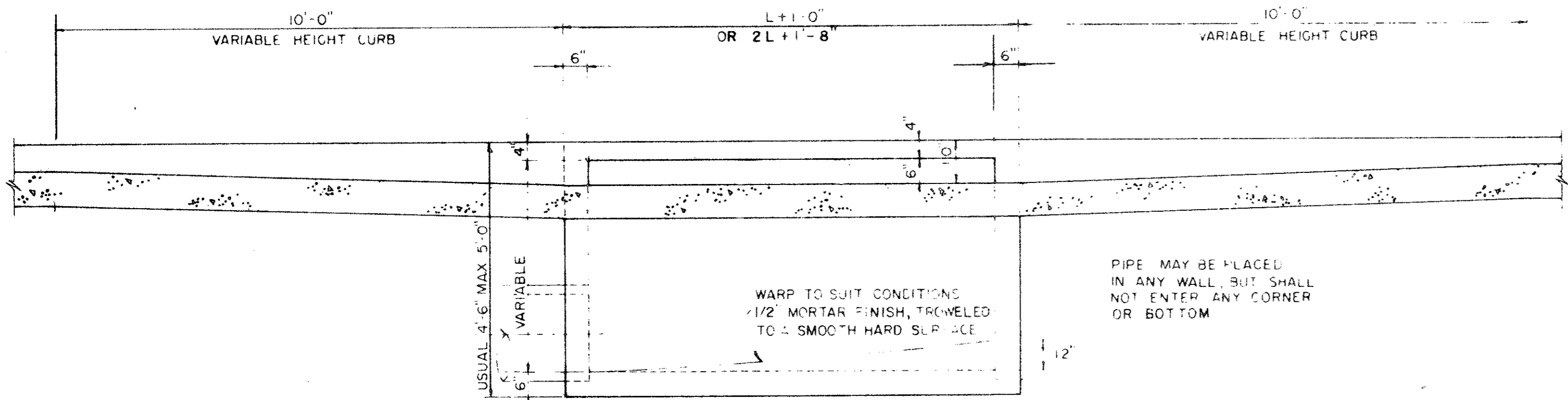


PLAN - RECESSED INLET



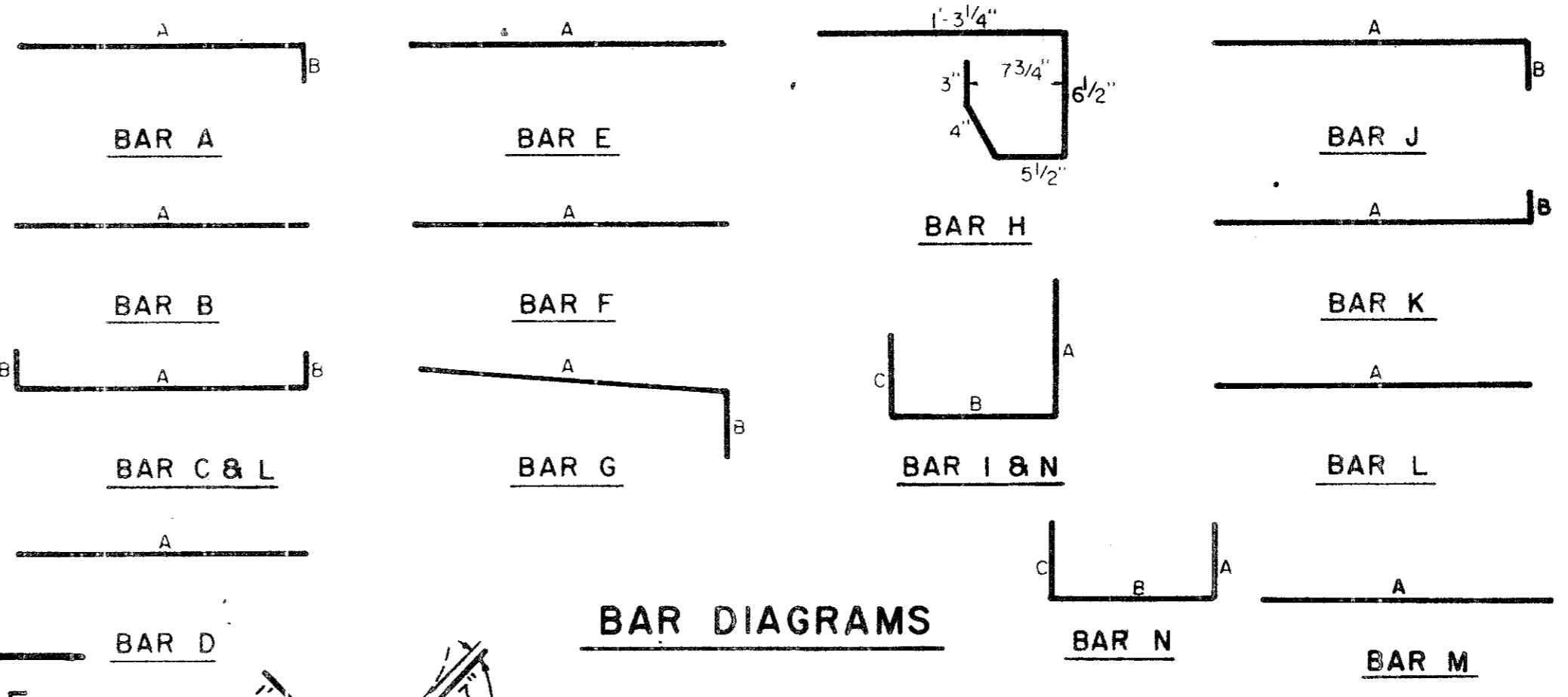
PLAN - STANDARD INLET

NOTE: PIPES SHALL CONNECT TO THE ENDS OR SIDES OF INLETS. CONNECTION SHALL NOT BE MADE AT CORNER OR BOTTOM.



SECTION A-A-RECESSED AND STANDARD INLETS

4, 6, 8 AND 10 FOOT INLETS



BAR DIAGRAMS

REINFORCING STEEL SCHEDULE

DIMENSIONS SHOWN ARE FOR MAXIMUM SIZE INLETS

INLET LENGTH	BAR TYPE	BAR DIA. (1/8 IN.)	NO. REQ'D	BAR DIMENSIONS		
				A	B	C
4	A	3	6	3'-2"	0'-3"	-
	B	3	1	2'-10"	-	-
	C	4	15	4'-8"	0'-6"	-
	D	4	5	4'-8"	-	-
	F	4	1	3'-2"	-	-
	G	3	5	2'-0"	1'-3"	-
6	H	3	3	*	*	*
	N	3	3	3'-2"	3'-2"	3'-2"
	A	3	9	3'-2"	0'-3"	-
	B	3	1	4'-10"	-	-
	C	4	15	6'-8"	0'-6"	-
	D	4	5	4'-8"	-	-
8	F	4	1	3'-2"	-	-
	G	3	5	2'-0"	1'-3"	-
	H	3	3	*	*	*
	N	3	3	3'-2"	3'-2"	3'-2"
	A	3	12	3'-2"	0'-3"	-
	B	3	1	6'-10"	-	-
10	C	4	15	8'-8"	0'-6"	-
	D	4	5	4'-8"	-	-
	F	4	1	3'-2"	-	-
	G	3	5	2'-0"	1'-3"	-
	H	3	15	*	*	*
	I	4	8	4'-8"	3'-2"	3'-2"
L	4	5	4'-3"	-	-	

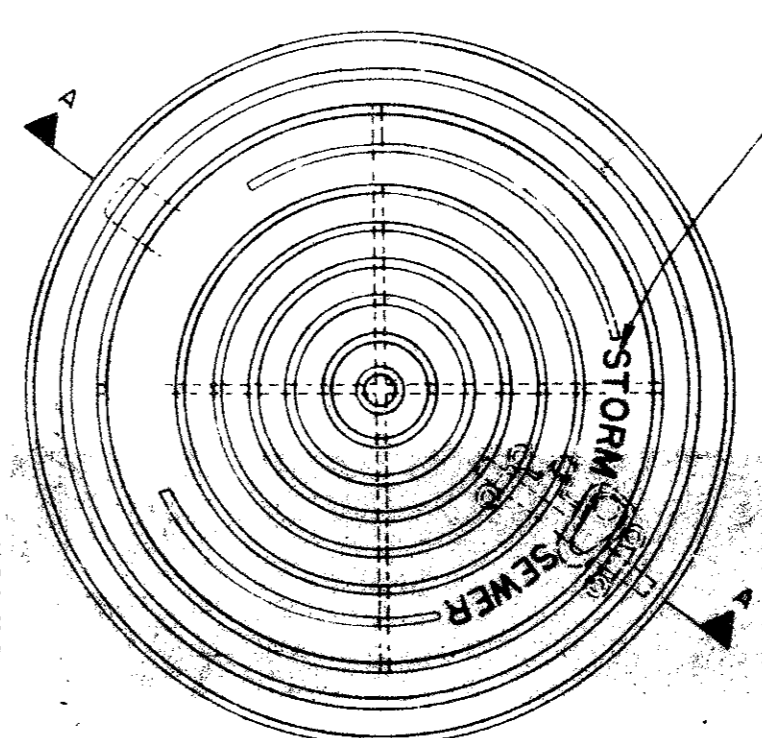
REINFORCING STEEL SCHEDULE

DOUBLE INLETS

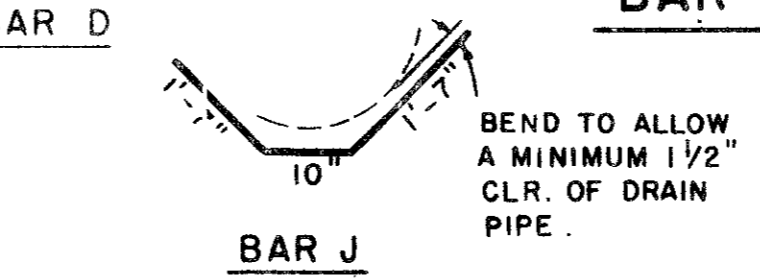
DIMENSIONS SHOWN ARE FOR MAXIMUM SIZE INLETS

INLET LENGTH	BAR TYPE	BAR DIA. (1/8 IN.)	NO. REQ'D	BAR DIMENSIONS		
				A	B	C
6 FT.	A	3	15	3'-2"	0'-6"	-
	B	3	2	11'-6"	-	-
	C	4	16	13'-4"	0'-6"	-
	D	4	9	4'-8"	-	-
	E	5	6	13'-4"	-	-
	F	4	5	1'-2"	-	-
	G	3	12	2'-0"	1'-3"	-
	H	3	26	*	*	*
	I	4	12	4'-8"	3'-2"	3'-2"
	J	5	1	*	*	*
	K	5	6	3'-2"	0'-6"	-
	L	4	11	3'-2"	0'-6"	-
	M	4	2	3'-0"	4'-8"	-
	N	4	2	4'-8"	3'-2"	4'-8"
7 FT.	A	3	17	3'-2"	0'-6"	-
	B	3	2	15'-6"	-	-
	C	4	16	17'-4"	0'-6"	-
	D	4	9	4'-8"	-	-
	E	5	6	15'-4"	-	-
	F	4	5	1'-2"	-	-
	G	3	15	2'-0"	1'-3"	-
	H	3	32	*	*	*
	I	4	14	4'-8"	3'-2"	3'-2"
	J	5	1	*	*	*
	K	5	6	3'-2"	0'-6"	-
	L	4	11	3'-2"	0'-6"	-
	M	4	2	3'-0"	4'-8"	-
	N	4	2	4'-8"	3'-2"	4'-8"
8 FT.	A	3	19	3'-2"	0'-6"	-
	B	3	2	15'-6"	-	-
	C	4	16	17'-4"	0'-6"	-
	D	4	9	4'-8"	-	-
	E	5	6	17'-4"	-	-
	F	4	5	1'-2"	-	-
	G	3	12	2'-0"	1'-3"	-
	H	3	26	*	*	*
	I	4	16	4'-8"	3'-2"	3'-2"
	J	5	1	*	*	*
	K	5	6	3'-2"	0'-6"	-
	L	4	11	3'-2"	0'-6"	-
	M	4	2	3'-0"	4'-8"	-
	N	4	2	4'-8"	3'-2"	4'-8"
10 FT.	A	3	23	3'-2"	0'-6"	-
	B	3	2	15'-6"	-	-
	C	4	16	21'-4"	0'-6"	-
	D	4	9	4'-8"	-	-
	E	5	6	21'-4"	-	-
	F	4	5	1'-2"	-	-
	G	3	15	2'-0"	1'-3"	-
	H	3	32	*	*	*
	I	4	20	4'-8"	3'-2"	3'-2"
	J	5	1	*	*	*
	K	5	6	3'-2"	0'-6"	-
	L	4	11	3'-2"	0'-6"	-
	M	4	2	3'-0"	4'-8"	-
	N	4	2	4'-8"	3'-2"	4'-8"

*SEE DIAGRAM FOR DIMENSIONS
**FIELD CUT AS REQ'D TO ACCOMMODATE DRAIN PIPE.
12', 14', 16 AND 20' INLETS



PLAN OF FRAME



BAR D BAR J

BEND TO ALLOW A MINIMUM 1/2" CLR. OF DRAIN PIPE.

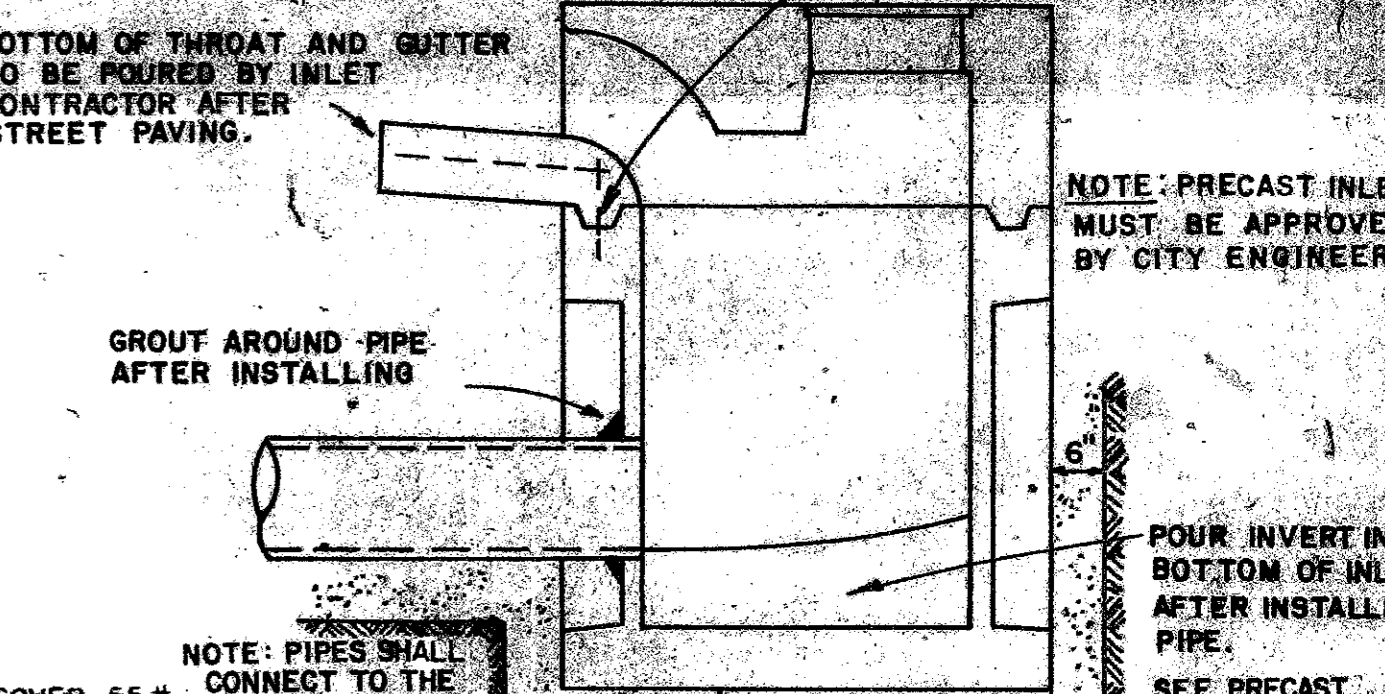
NOTES FOR PRECAST INLET

- THE FLOOR OF THE EXCAVATION MUST PROVIDE FIRM, LEVEL BED FOR THE BASE SECTION TO REST UPON.
- A MINIMUM OF 6" OF 1" DIAMETER (MAXIMUM) ROCK OR GRAVEL SHALL BE USED TO PREPARE THE BEDDING TO FINAL GRADE OR IN LIEU OF THIS THAT AT LEAST 6" OF 2 SACK CEMENT STABILIZED SAND BE USED TO PREPARE THE BEDDING TO GRADE. CEMENT STABILIZED SAND TO BE ALLOWED TO SET BY KEEPING HOLE PUMPED DRY.

AFTER CASTING HAS BEEN INSTALLED ON THE BEDDING, THE BACKFILL MATERIAL, WHICH IS PREPARED AND PLACED IN BOUES, IN ACCORDANCE WITH SPECIFICATIONS AND OTHER DETAILS WHICH SHOULD BE OBTAINED FROM THE CONTRACTOR, SHALL BE COMMERCE IN LIEU OF 30 MORE THAN 12". THE MATERIAL USED FOR BACKFILL SHOULD BE OF A TYPE SUITABLE TO OBTAIN THE DENSITY REQUIREMENTS FOR THE SPECIFIC JOB.

*SEE DIAGRAM FOR DIMENSIONS 4, 6, 8 AND 10' INLETS

1/2" DOWELS 12" LONG TO BE INSERTED IN HOLES PROVIDED



BOTTOM OF THROAT AND GUTTER TO BE POURED BY INLET CONTRACTOR AFTER STREET PAVING.

NOTE: PRECAST INLETS MUST BE APPROVED BY CITY ENGINEER.

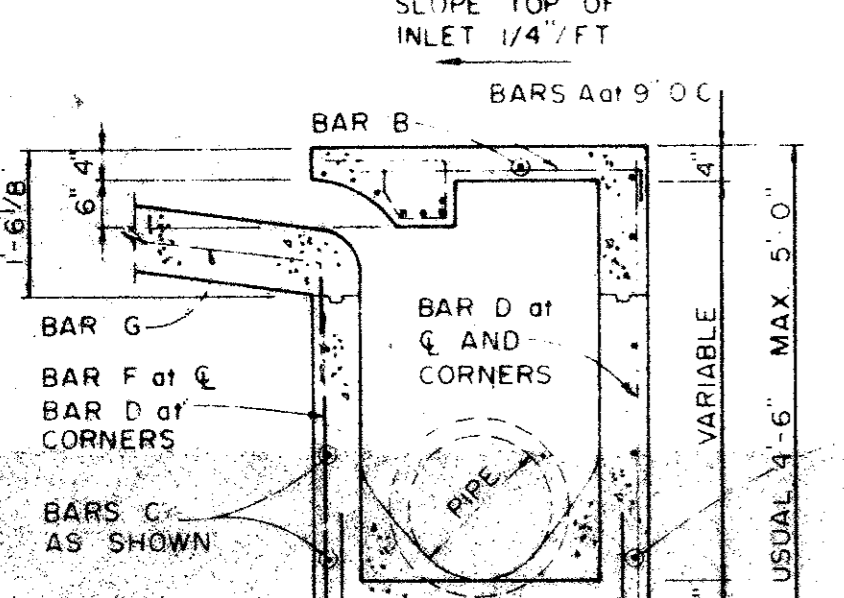
GROUT AROUND PIPE AFTER INSTALLING

NOTE: PIPES SHALL CONNECT TO THE ENDS OR SIDES OF INLETS. CONNECTION NOT TO BE MADE AT CORNER OR BOTTOM.

COVER 55# RING, 45# NOT TO BE MADE AT CORNER OR BOTTOM.

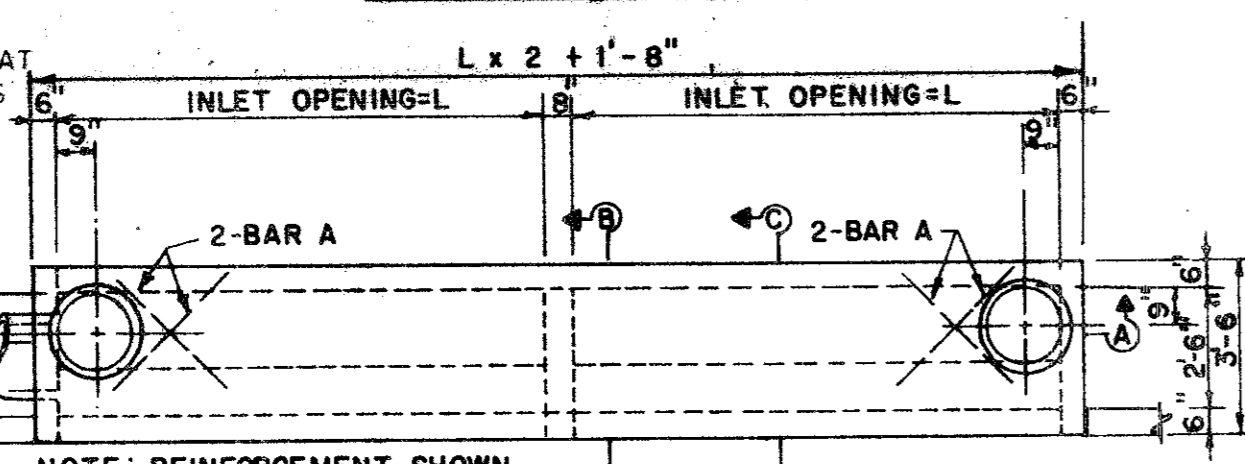
INSTALLATION DRAWING FOR PRECAST 5' & 10' CURB INLETS

NO.	REVISION	BY	DATE
TOWN OF ADDISON			
DEPARTMENT OF ENGINEERING			
STANDARD CONSTRUCTION DETAILS			
STORM DRAINAGE			
CURB INLETS			
DATE:			



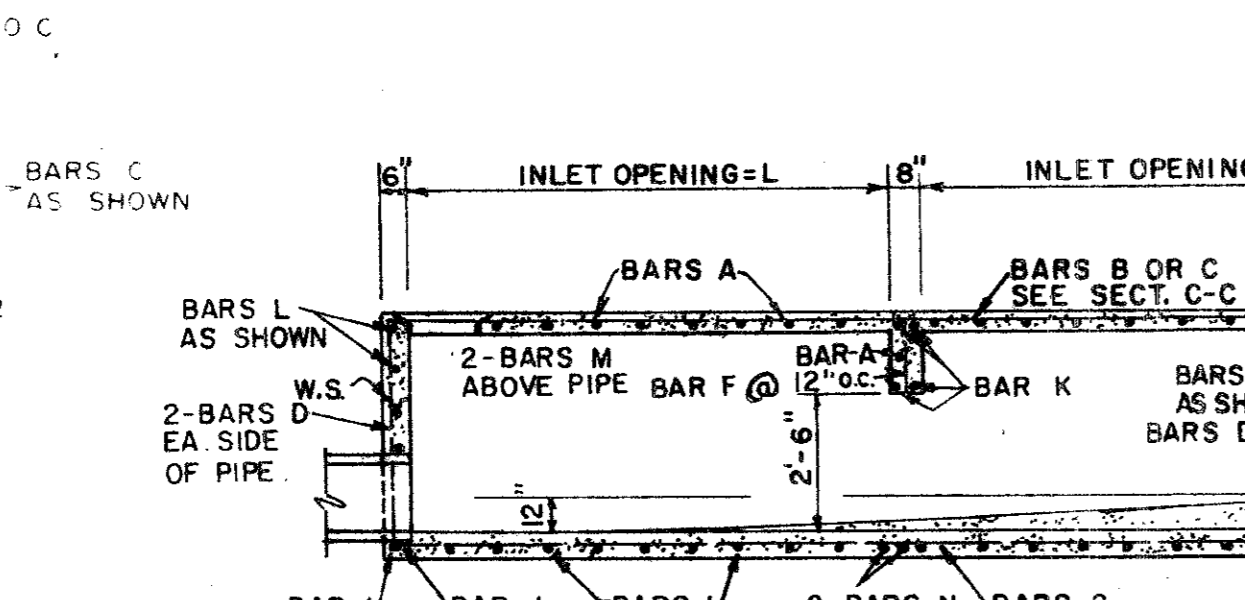
SECTION B-B 4, 6, 8 AND 10 FT. INLETS

SECTION B-B 12, 14, 16 AND 20 FOOT INLETS

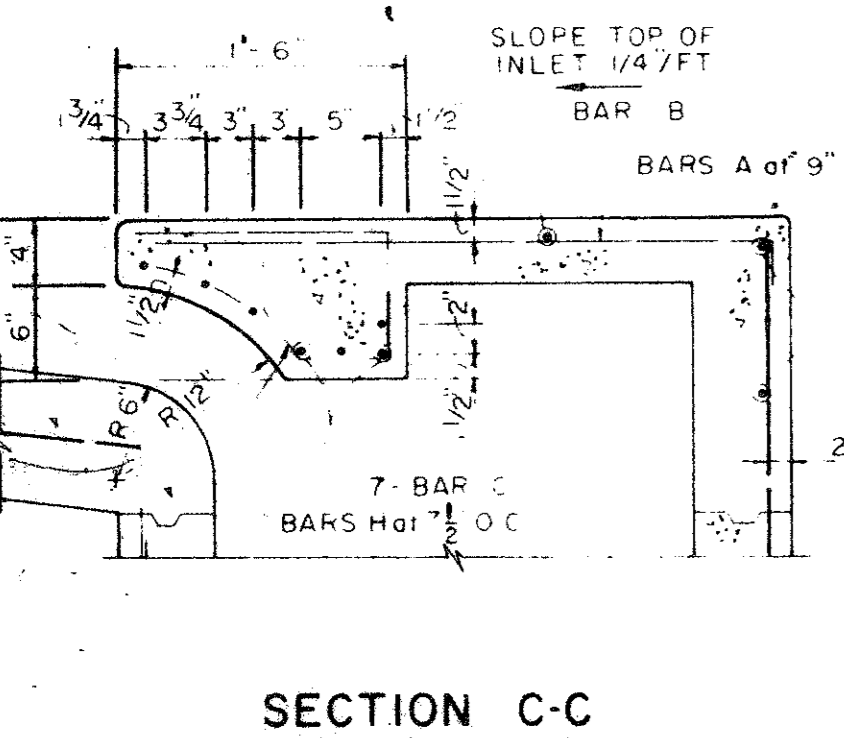


NOTE: REINFORCEMENT SHOWN IS ADDITIONAL FOR SPECIAL CONDITION, FOR REMAINDER OF REINF. SEE SECTIONS.

PLAN 12, 14, 16, AND 20 FOOT INLETS



SECTION A-A 12, 14, 16 AND 20 FOOT INLETS



SECTION C-C 4, 6, 8 AND 10 FOOT INLETS

SECTION C-C 4, 6, 8 AND 10 FOOT INLETS