

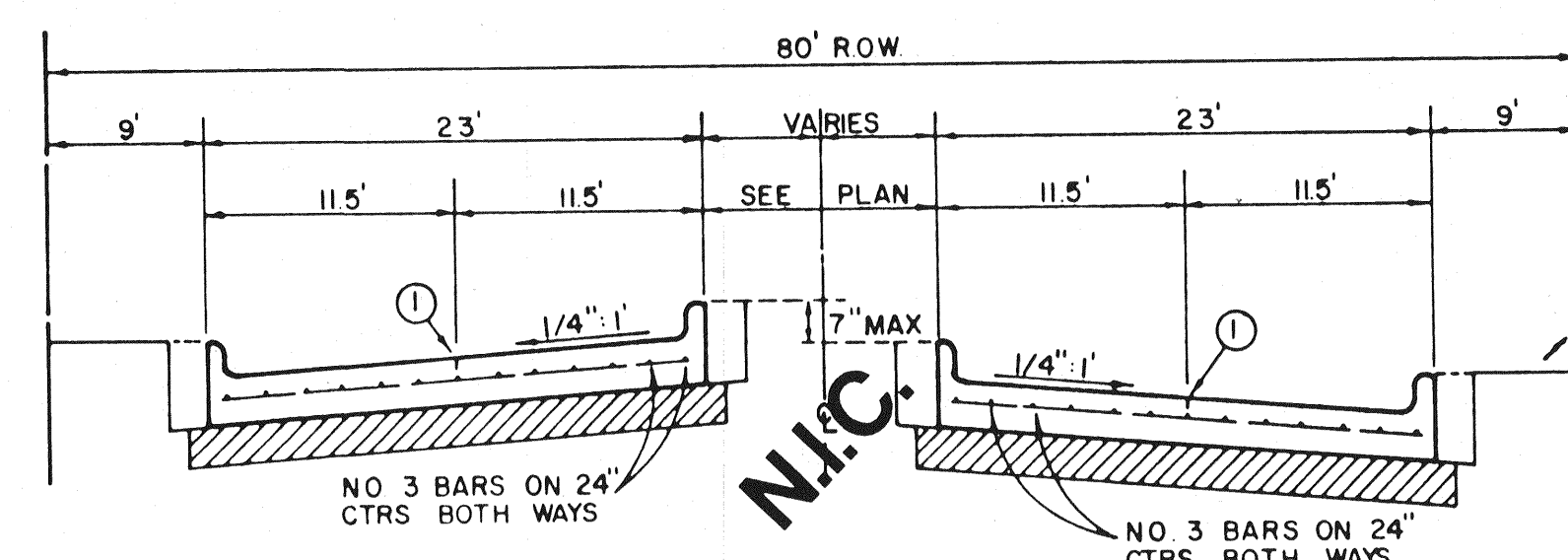
REGULAR SECTION

NOTE: BACKFILL NOT A SEPARATE PAY ITEM. INCIDENTAL TO CONST. MATERIAL ACQUIRED FROM EXCAVATION MAY BE USED IF APPROVED BY ENGR.

NOTE: ALL TYPICAL NOTES SHOWN THIS DETAIL SHALL APPLY TO ALL DETAILS THIS SHEET UNLESS OTHERWISE INDICATED.

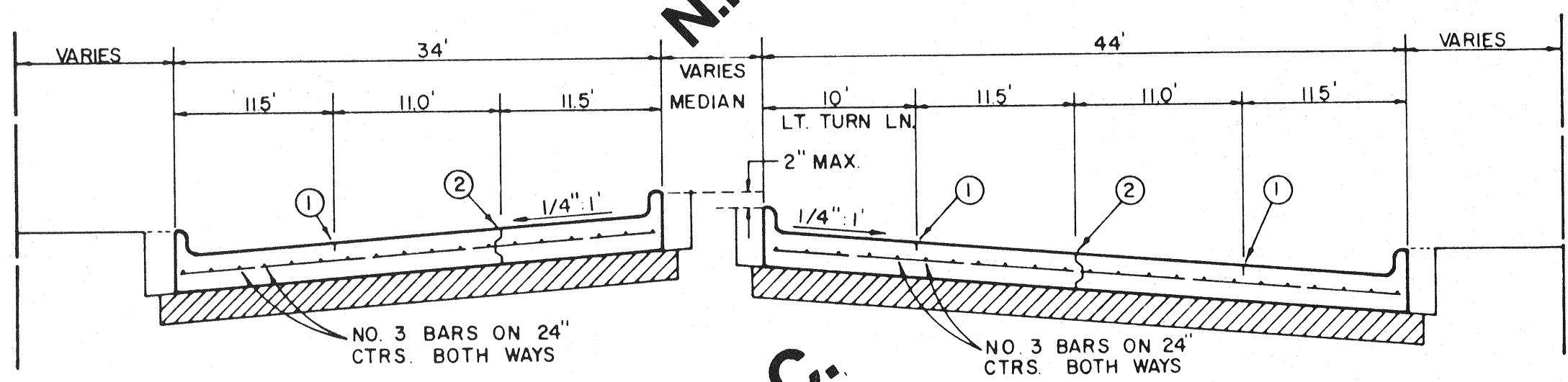
SEE NOTE "C" GENERAL NOTES, TYP ALL DETAILS THIS SHEET.

LIMITS OF EXCAVATION TYP ALL DETAILS THIS SHEET.



REGULAR SECTION

N.I.C.

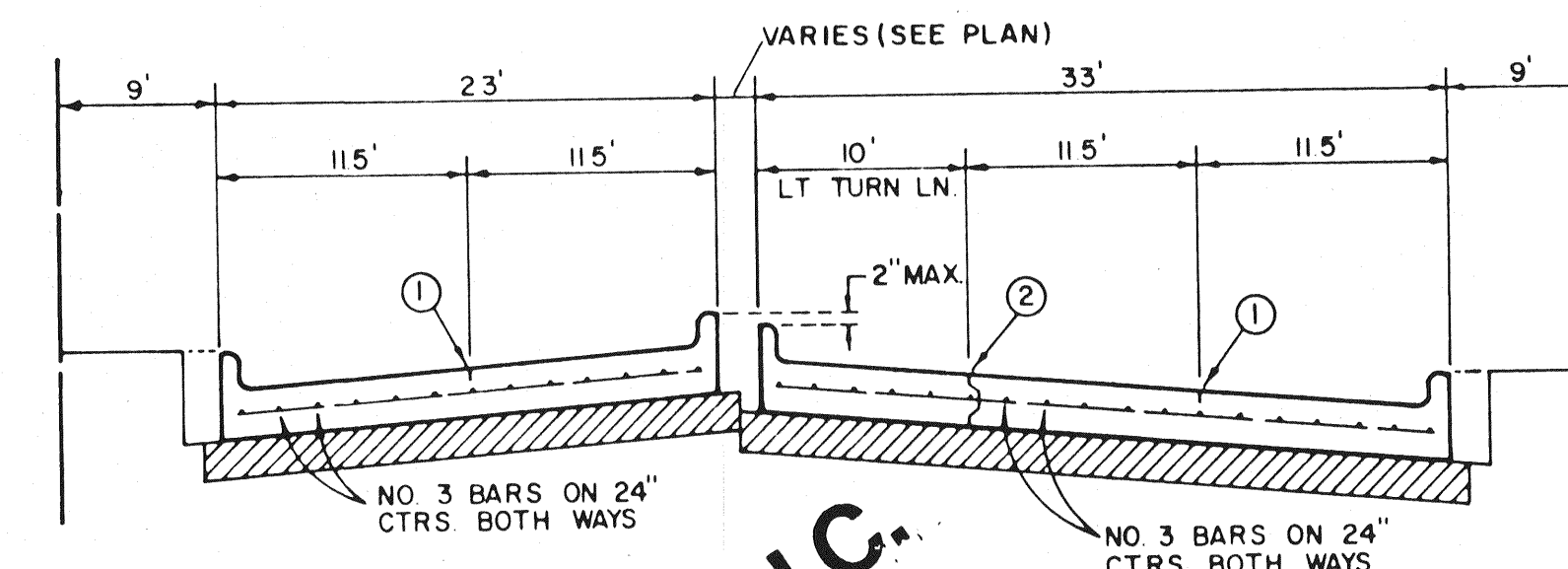


LEFT TURN SECTION

MAJOR ARTERIAL

N.I.C.

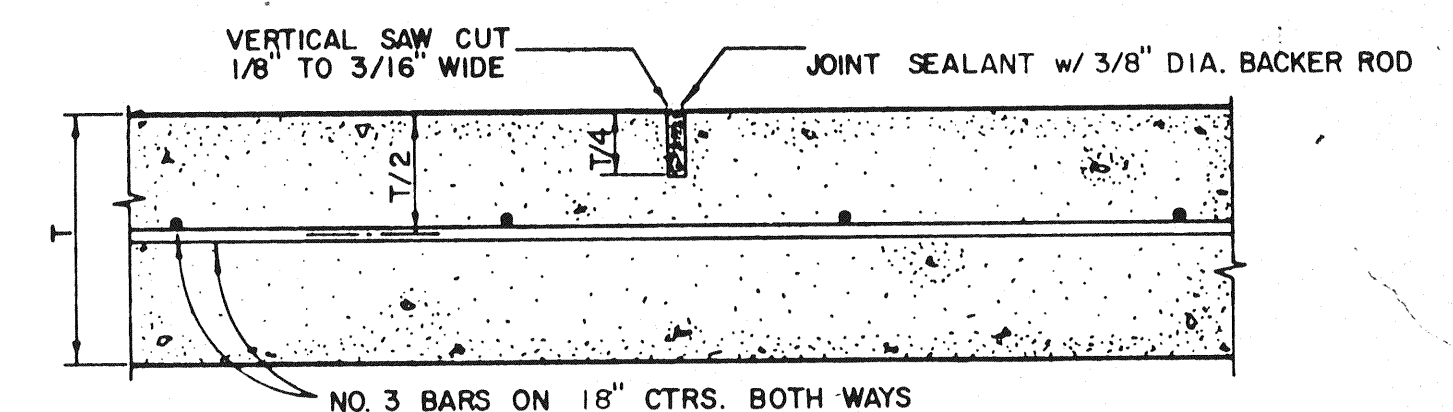
N.I.C.



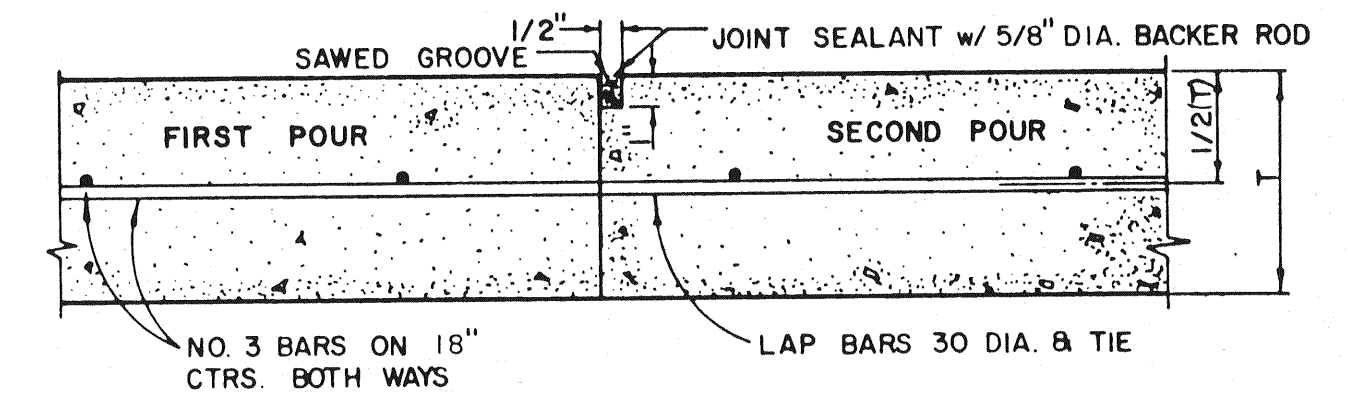
LEFT TURN SECTION

MINOR ARTERIAL

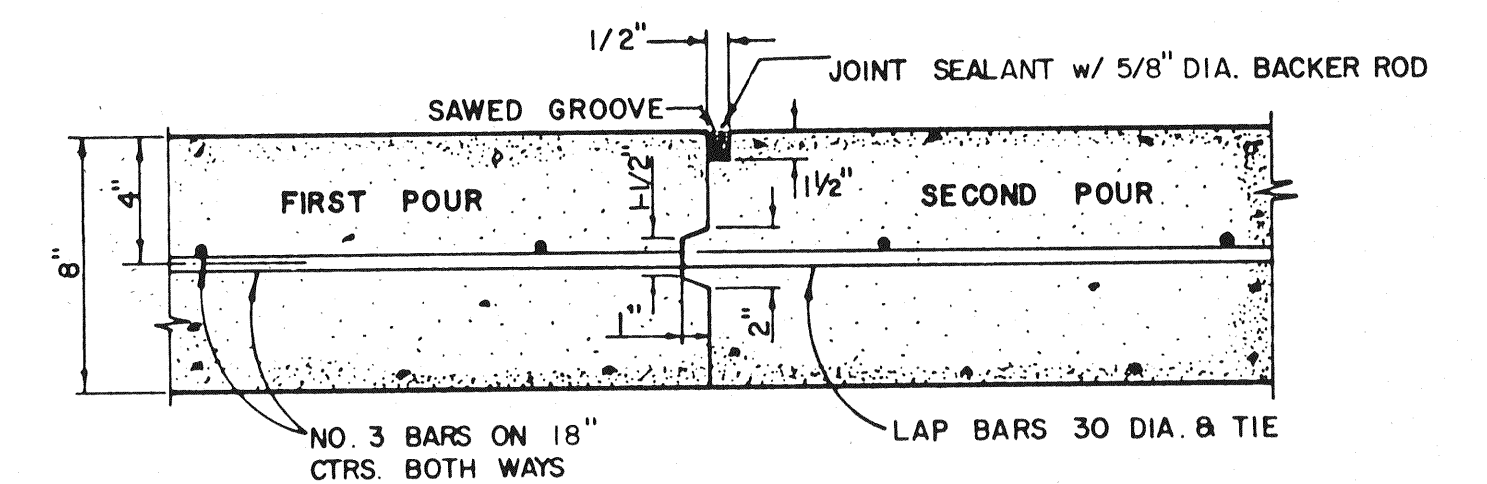
N.I.C.



SAWED DUMMY JOINT



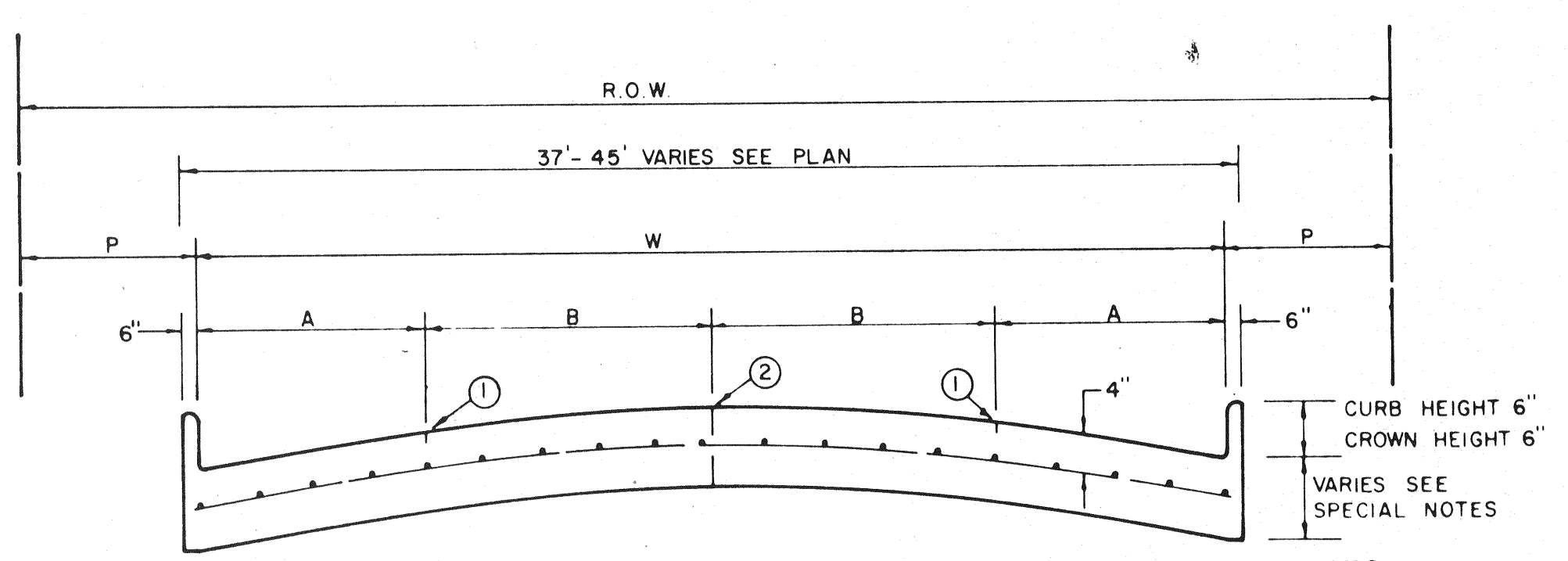
CONSTRUCTION JOINT FOR 6 INCH PAVEMENT



CONSTRUCTION JOINT FOR 8 INCH PAVEMENT

GENERAL NOTES

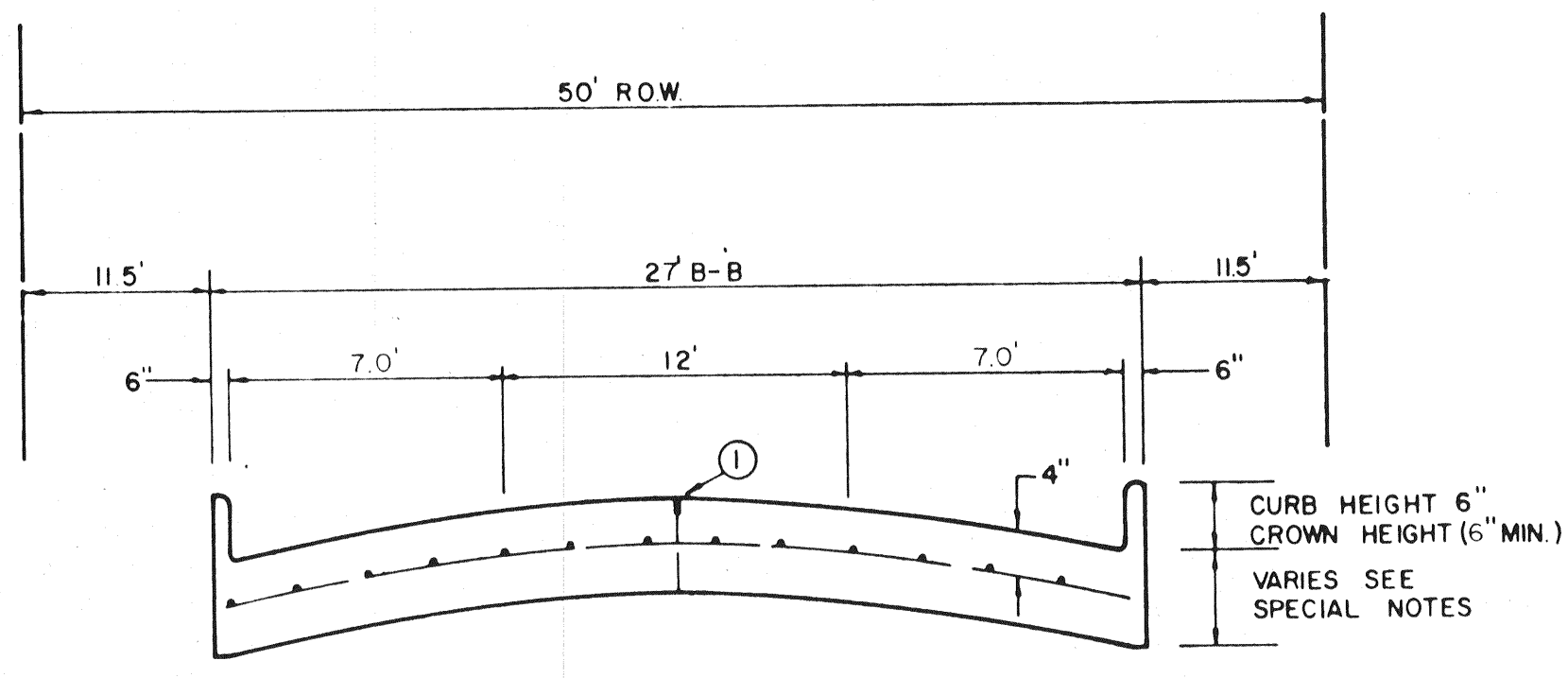
- A. GENERAL PAVEMENT THICKNESS FOR STREETS SHALL BE AS SPECIFIED BELOW IN SPECIAL NOTES.
- B. STANDARD SPECIFICATIONS REINFORCED CONCRETE PAVEMENTS
  1. ALL CURBS SHALL BE PLACED INTEGRAL WITH PAVEMENT
  2. CURBS SHALL MEET THE SAME COMPRESSIVE STRENGTH AS SPECIFIED FOR THE CONCRETE PAVEMENT
  3. DETAIL AND ARRANGEMENT OF JOINTS, ALL TYPES, SHALL BE AS SHOWN ON THE STANDARD CONSTRUCTION DETAILS, OR AS APPROVED BY ENGINEER.
  4. BAR LAPS SHALL BE 30 DIAMETERS.
- C. BAR CHAIRS OR AN APPROVED SUPPORTING DEVICE SHALL BE FURNISHED.



FOUR MOVING LANES OR TWO MOVING LANES/TWO PARKING LANES

STREET TYPE	STREET WIDTH (W)	A	B	ROW WIDTH	P
COLLECTOR	36'	8'	10'	60'	11.5'
COLLECTOR	40'	8' OR 10'	10' OR 12'	60'	9.5'
COLLECTOR	44'	11'	11'	65'	10.0'

COLLECTOR STREET



ONE MOVING LANE / TWO PARKING LANES

LOCAL STREET

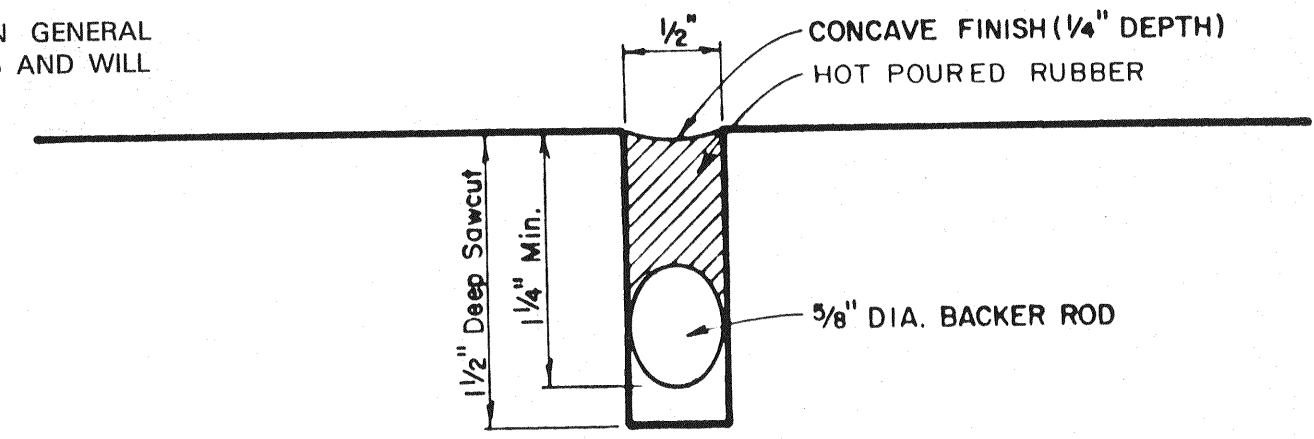
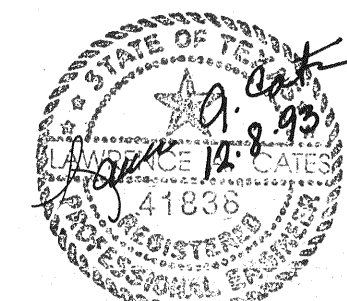
\* FULL WIDTH PAVEMENT OF 36' WIDTH STREETS IS ALLOWED WHERE APPROVED BY THE ENGINEER

REINFORCED CONCRETE PAVEMENT

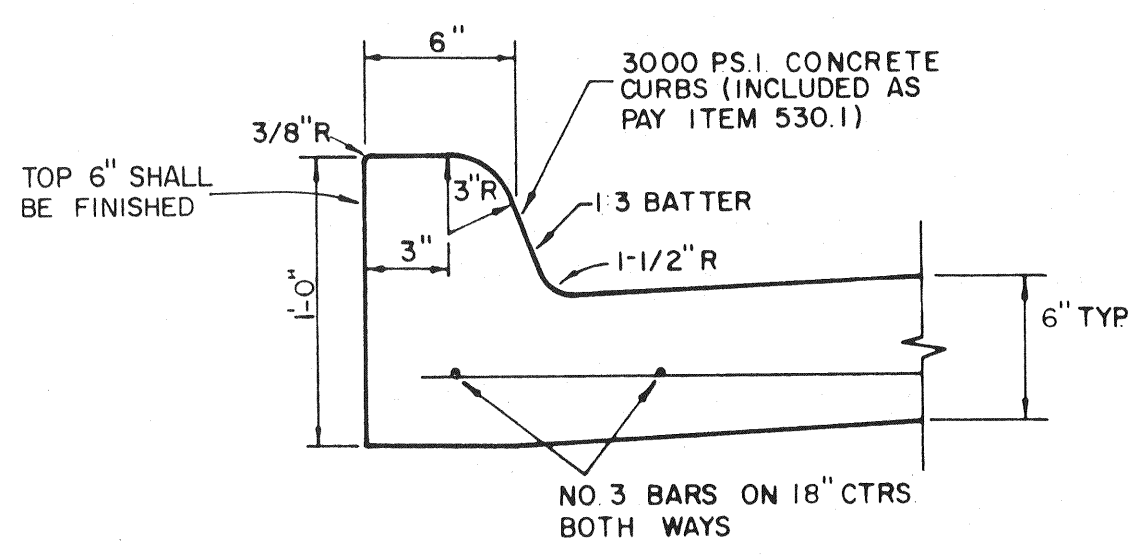
ALL REINFORCING BARS SHALL BE NO. 3 TRANSVERSE BARS TO BE SPACED ON 1'-6" CENTERS, LONGITUDINAL BARS TO BE SPACED ON 1'-6" EXCEPT WHERE NOTED.  
 UNDIVIDED STREETS - PROVIDE 4" DBL - REF YELLOW & BUTTON P-117-Y PATTERNS TO BE ESTABLISHED BY ENGINEER SEE DETAIL SHEET  
 ① SAWED LONGITUDINAL DUMMY JOINT  
 ② CONSTRUCTION JOINT (FULL WIDTH PVM'T IS ALLOWED WHERE APPROVED BY ENGINEER)  
 ③ FINISH SHALL BE TRANSVERSE WITH TRAFFIC LANES AND SHALL BE STEEL TINED BROOM FINISH.

AS-BUILTS

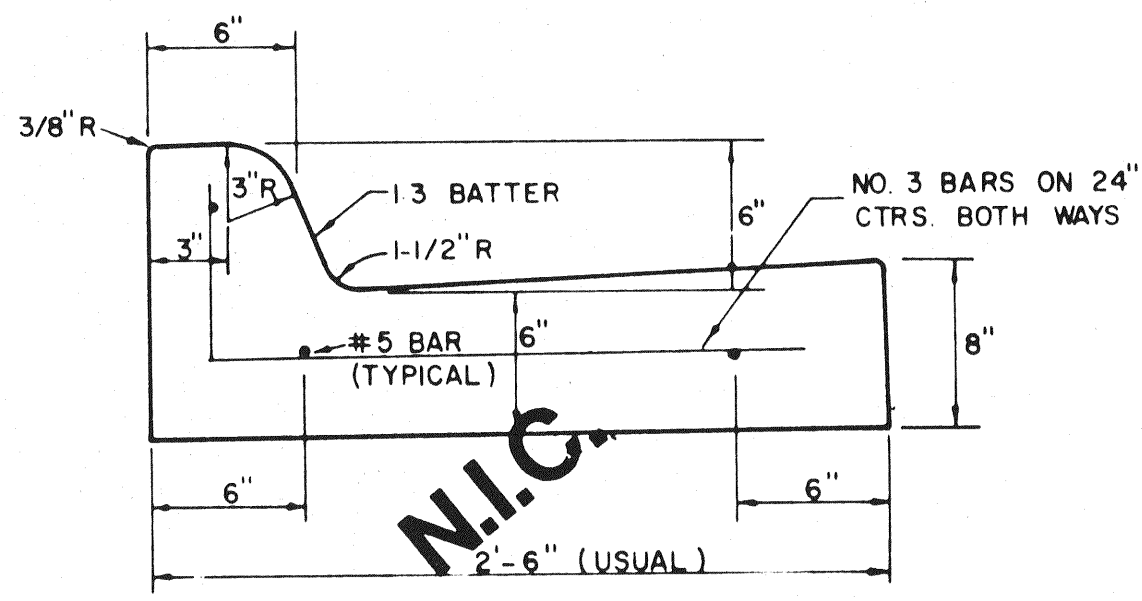
I CERTIFY THIS PROJECT WAS CONSTRUCTED IN GENERAL CONFORMANCE WITH THESE CONSTRUCTION PLANS AND WILL FUNCTION AS DESIGNED.



TYPICAL JOINT DETAIL

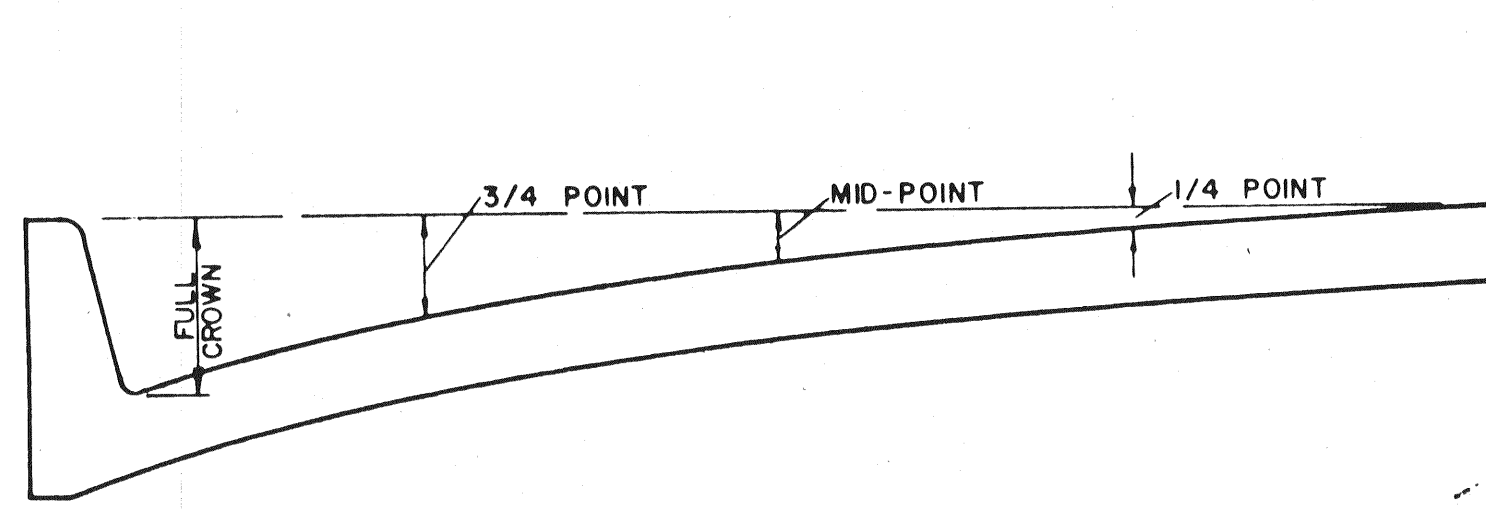


STANDARD CURB



SEPARATE CURB AND GUTTER

N.I.C.

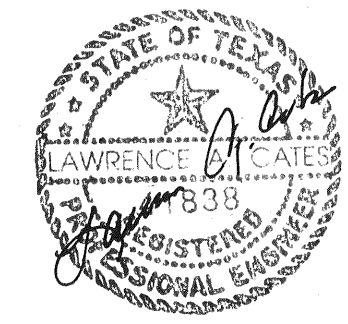


ROADWAY WIDTH (W)	TOTAL CROWN HEIGHT	3/4 POINT	MID-POINT	1/4 POINT
26'	6"	3 - 3/8"	1 - 1/2"	3/8"
36'	6"	3 - 3/8"	1 - 1/2"	3/8"
44'	6"	3 - 3/8"	1 - 1/2"	3/8"
48'	6"	3 - 3/8"	1 - 1/2"	3/8"

TABLE OF CROWN HEIGHTS AND ORDINATES FOR VARIOUS PARABOLIC SECTIONS

TOWN OF ADDISON, TEXAS  
 DEPARTMENT OF ENGINEERING  
**STANDARD CONSTRUCTION DETAILS PAVING**  
**STREET CROWNS & JOINTS**

Designed -	Drawn -	Date -	Job No. -
Approved -	Checked -	Scale -	Sheet SD-1



May 14, 1963