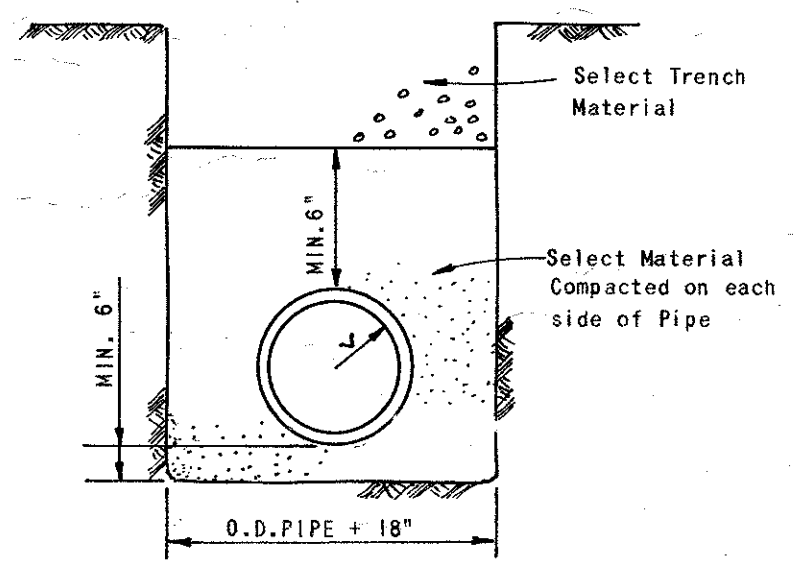
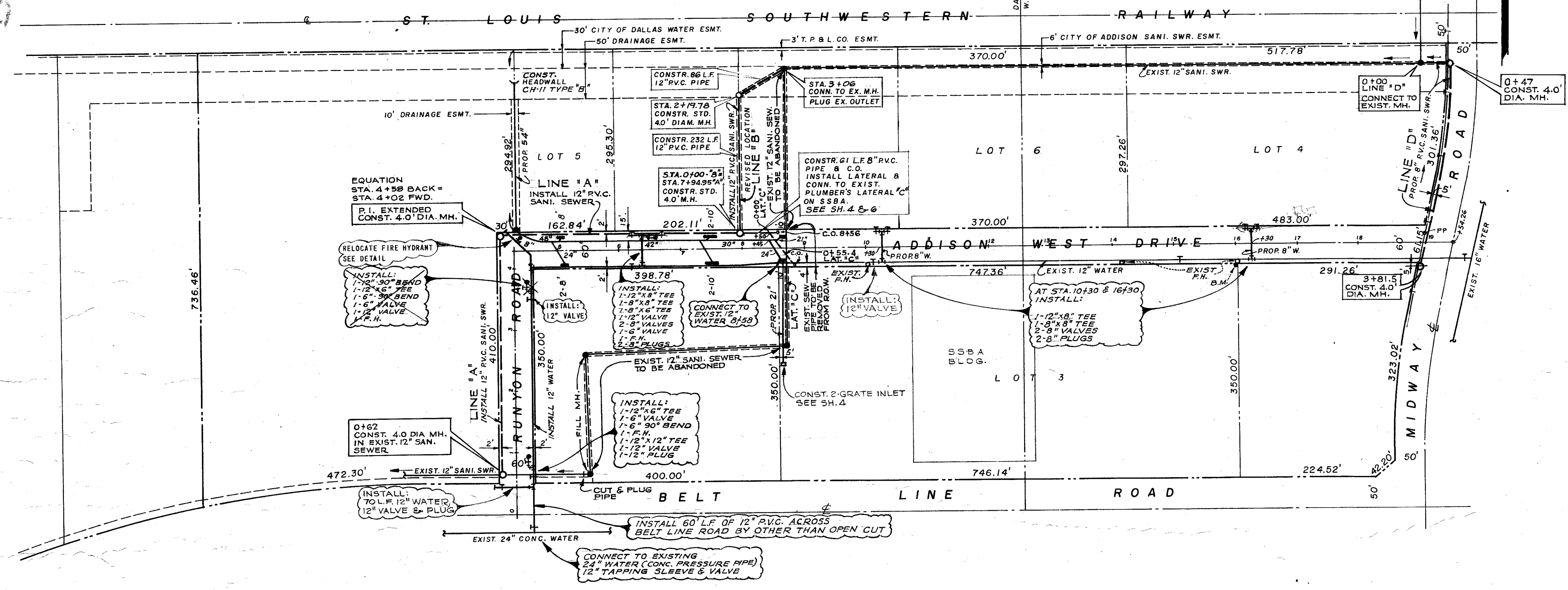
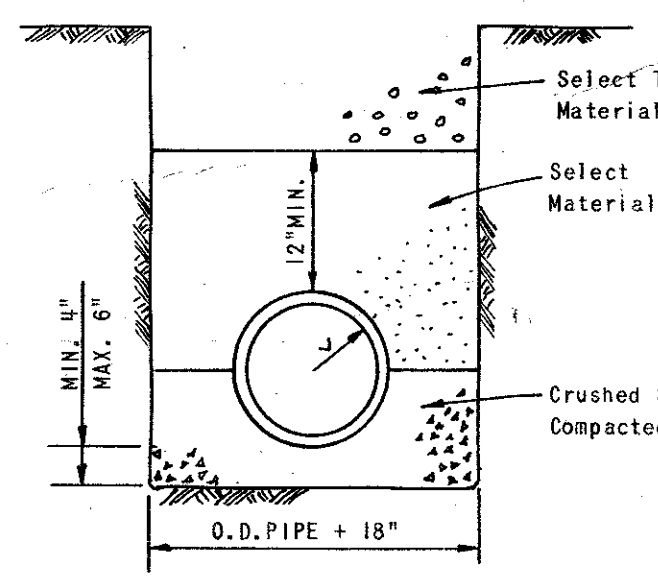


B2-1

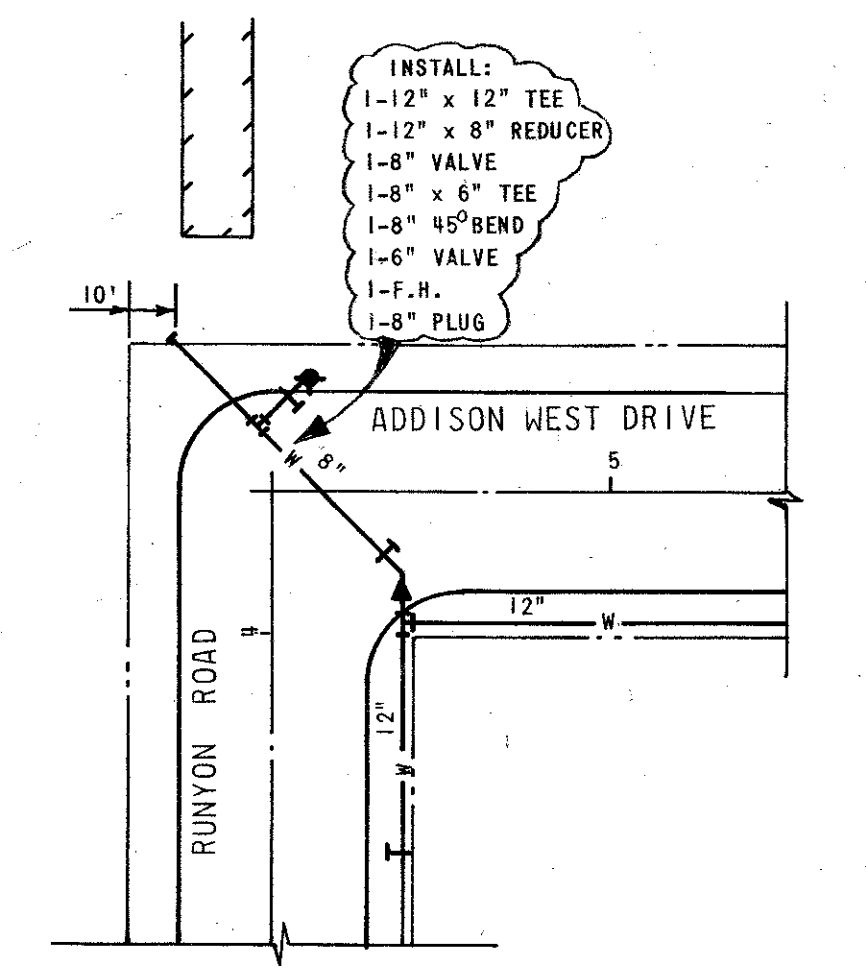
DAVID MYERS SURVEY - ABST. NO. 923
W. H. WITT SURVEY - ABST. NO. 1609



WATER & SANI. SWR. PIPE EMBEDMENT DETAILS



STORM SEWER PIPE EMBEDMENT DETAILS



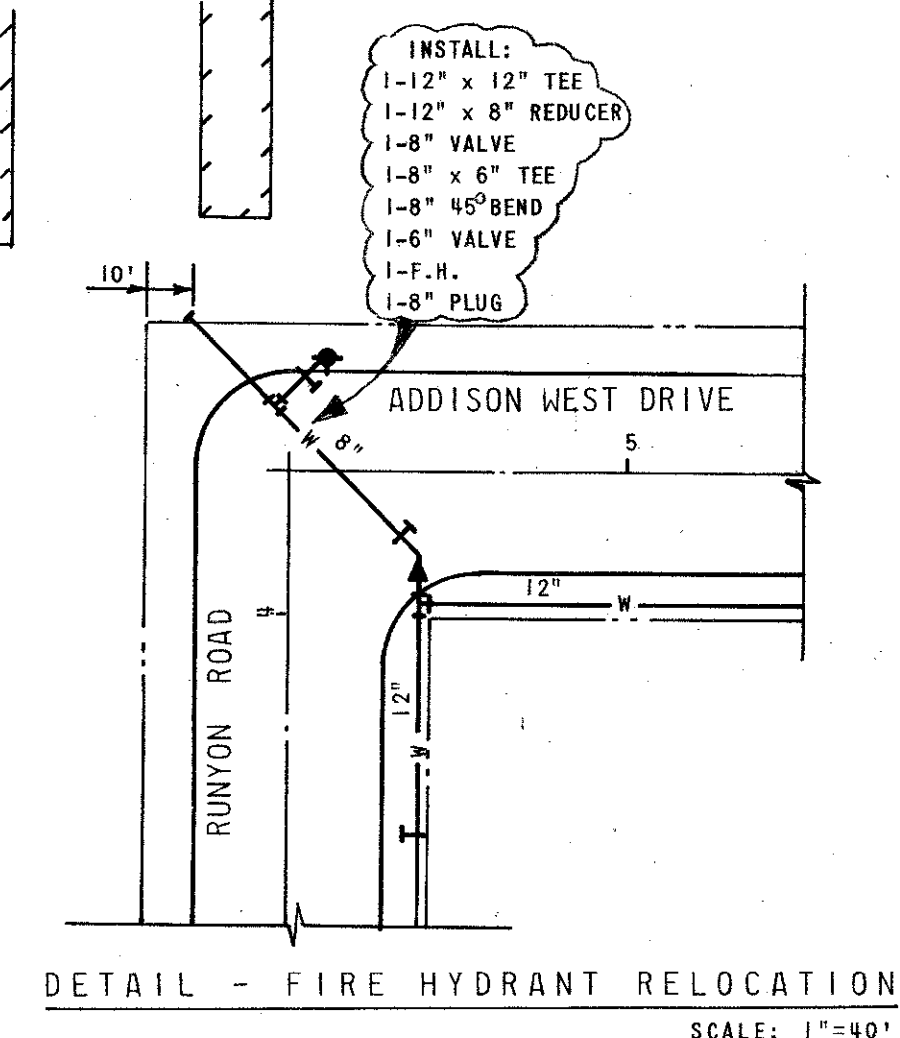
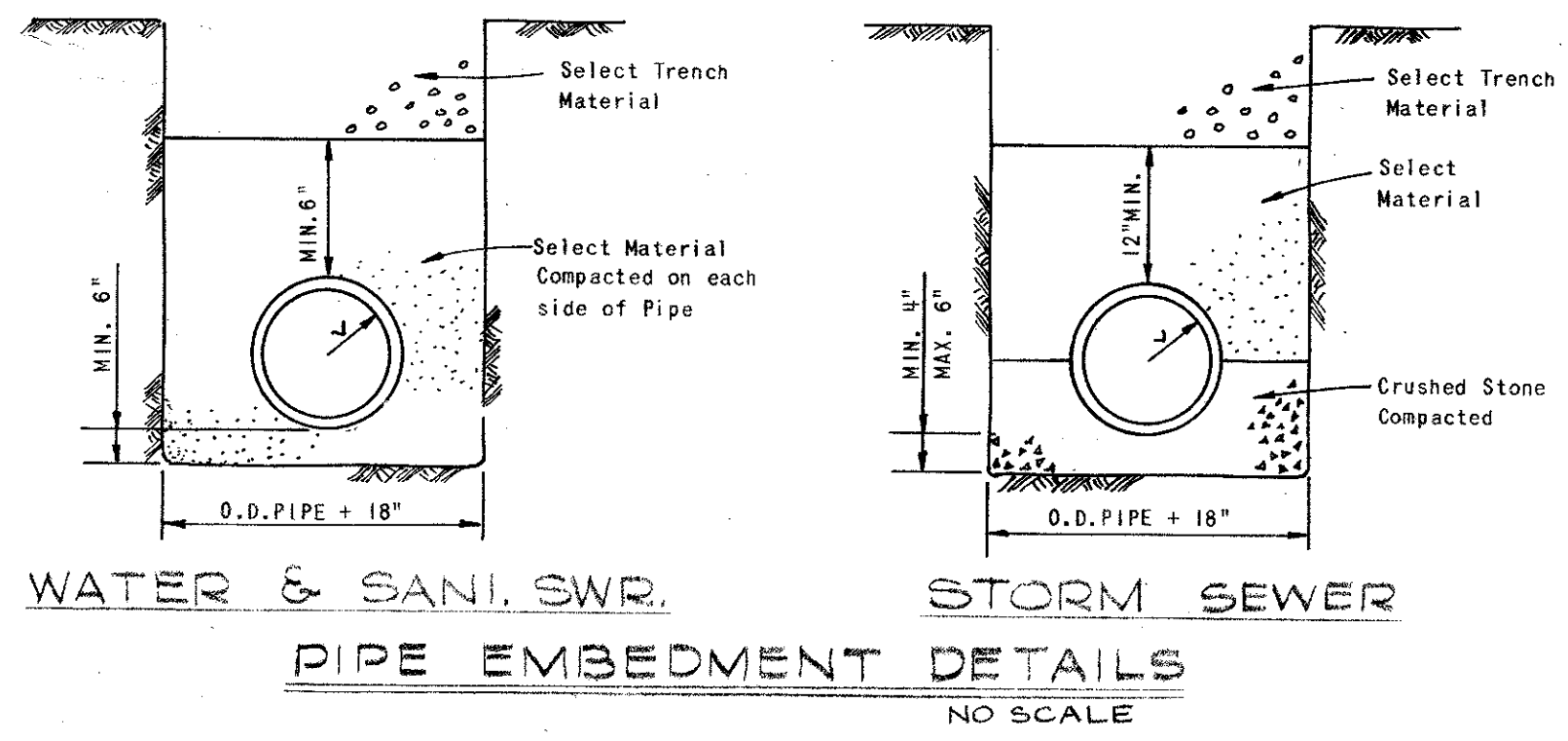
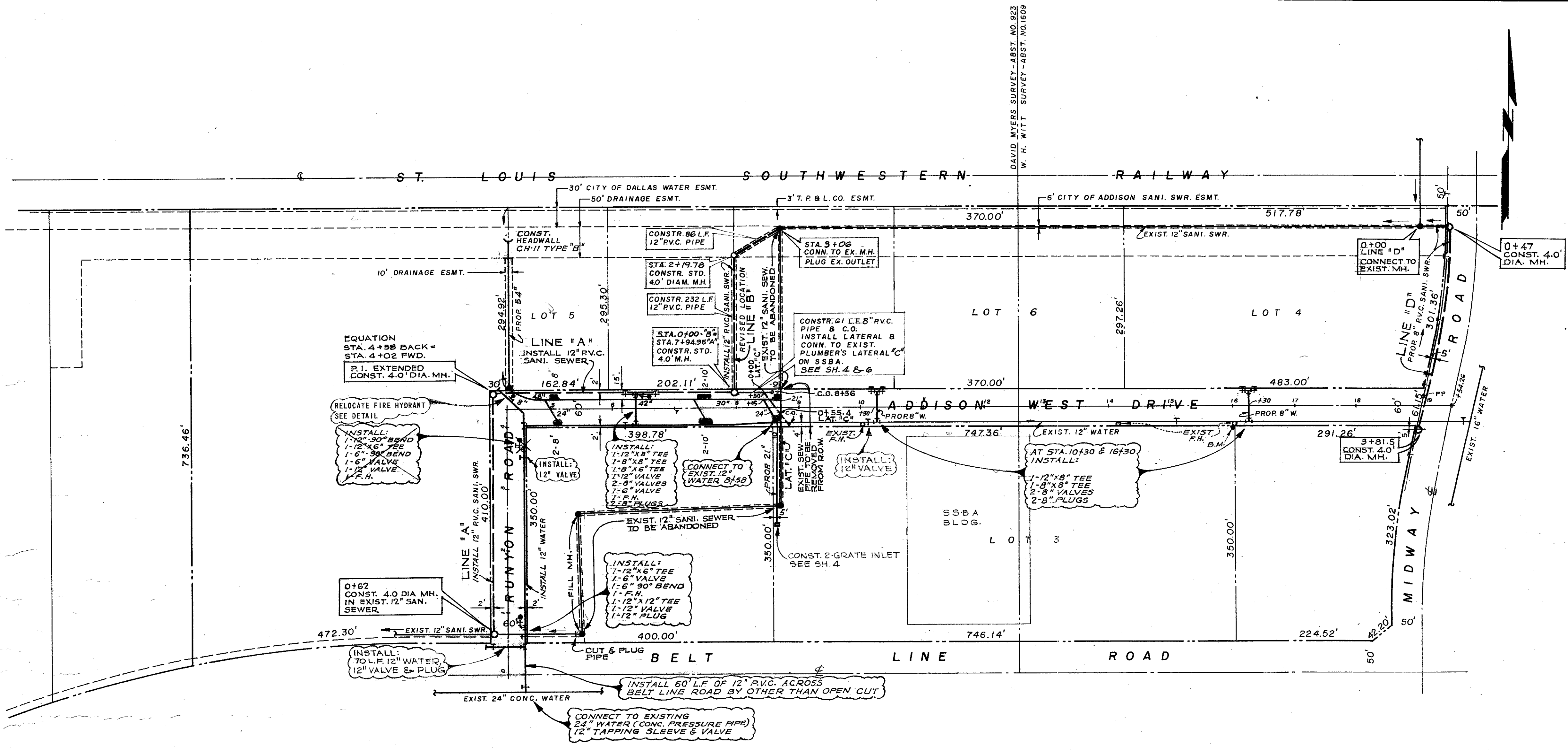
DETAIL - FIRE HYDRANT RELOCATION

BENCH MARK: TOP OF CURB NORTHEAST CORNER OF CONCRETE PARKING LOT. ON SSBA PROPERTY. ELEV. 615.74.

SUBDIVISION: ADDISON WEST INDUSTRIAL PARK
 DESIGNED: Powell & Powell, Engineers Date: _____
 R.O.W. APPROVED: _____ Date: _____
 ENGINEER OF DESIGN: Water Utilities Department Date: _____
 CONTRACT NO. _____

REVISED JUNE 6, 1979 TO SHOW RELOCATION OF FIRE HYDRANT.
REVISED: MAY 1, 1979

5 6
CITY OF ADDISON, TEXAS ADDISON WEST INDUSTRIAL PARK WATER - SANITARY SEWER
WATER UTILITIES DEPARTMENT
SCALE: 1" = 100'
POWELL & POWELL, ENGINEERS 430 ONE LEMMON PARK NORTH DALLAS, TEXAS DWG. NO. S-641.3
FEBRUARY, 1979 DALLAS, TEXAS 2908-79-1-1.1

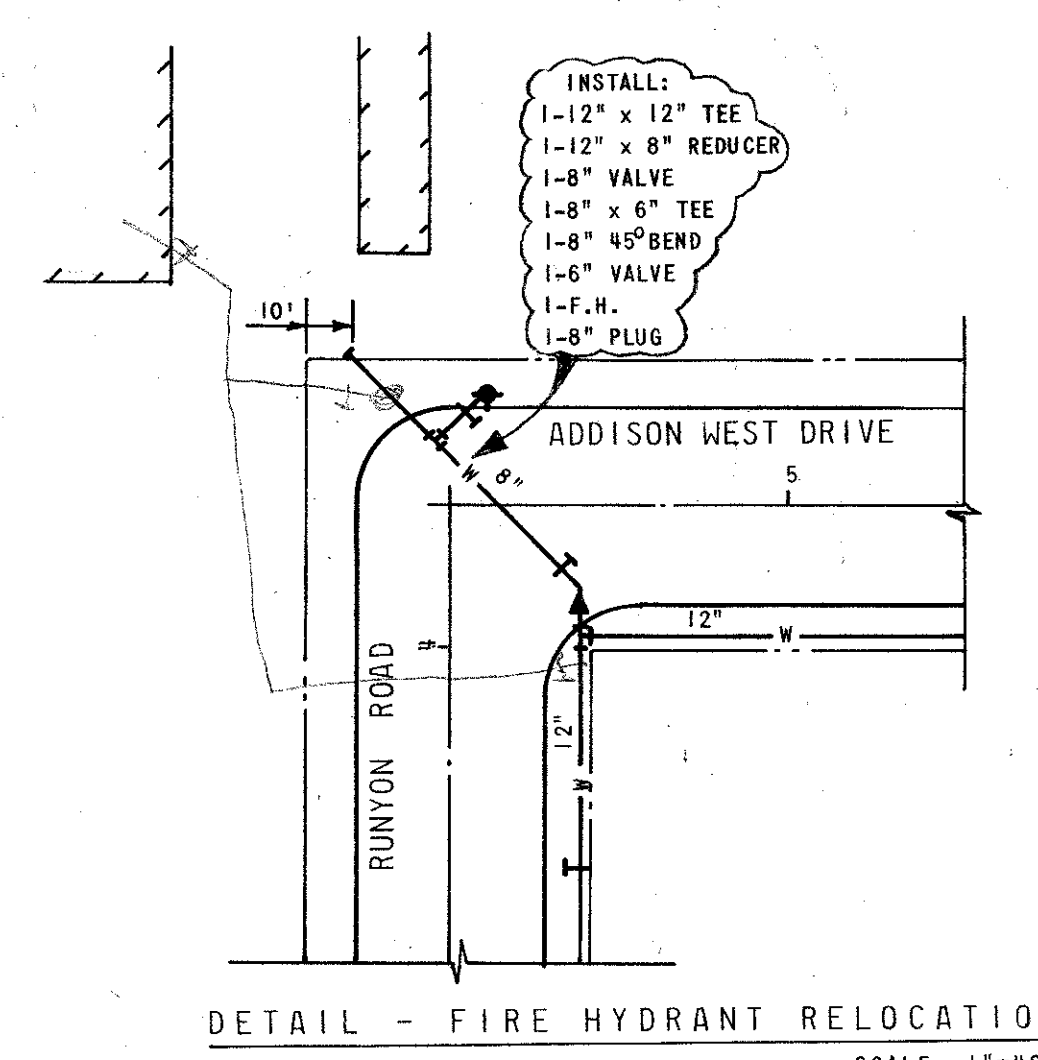
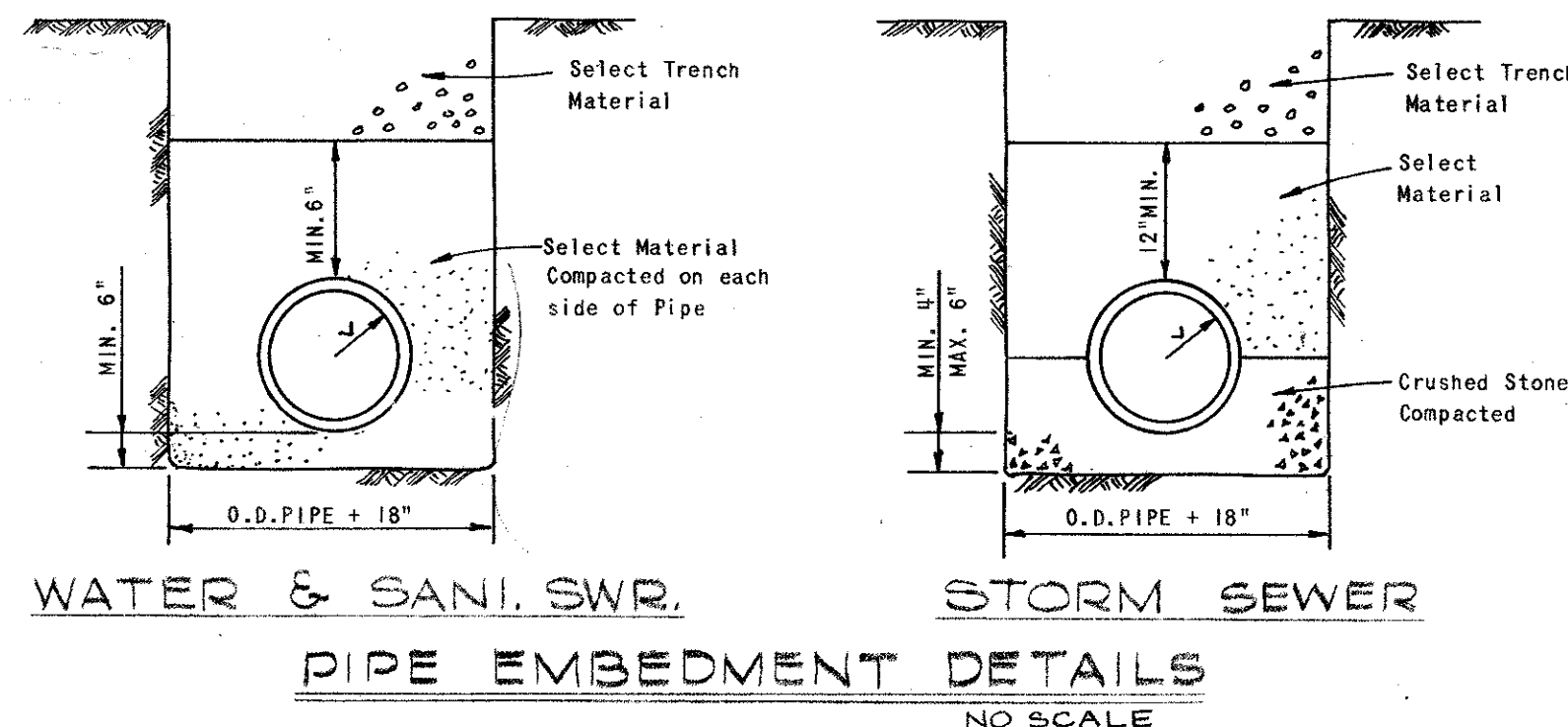
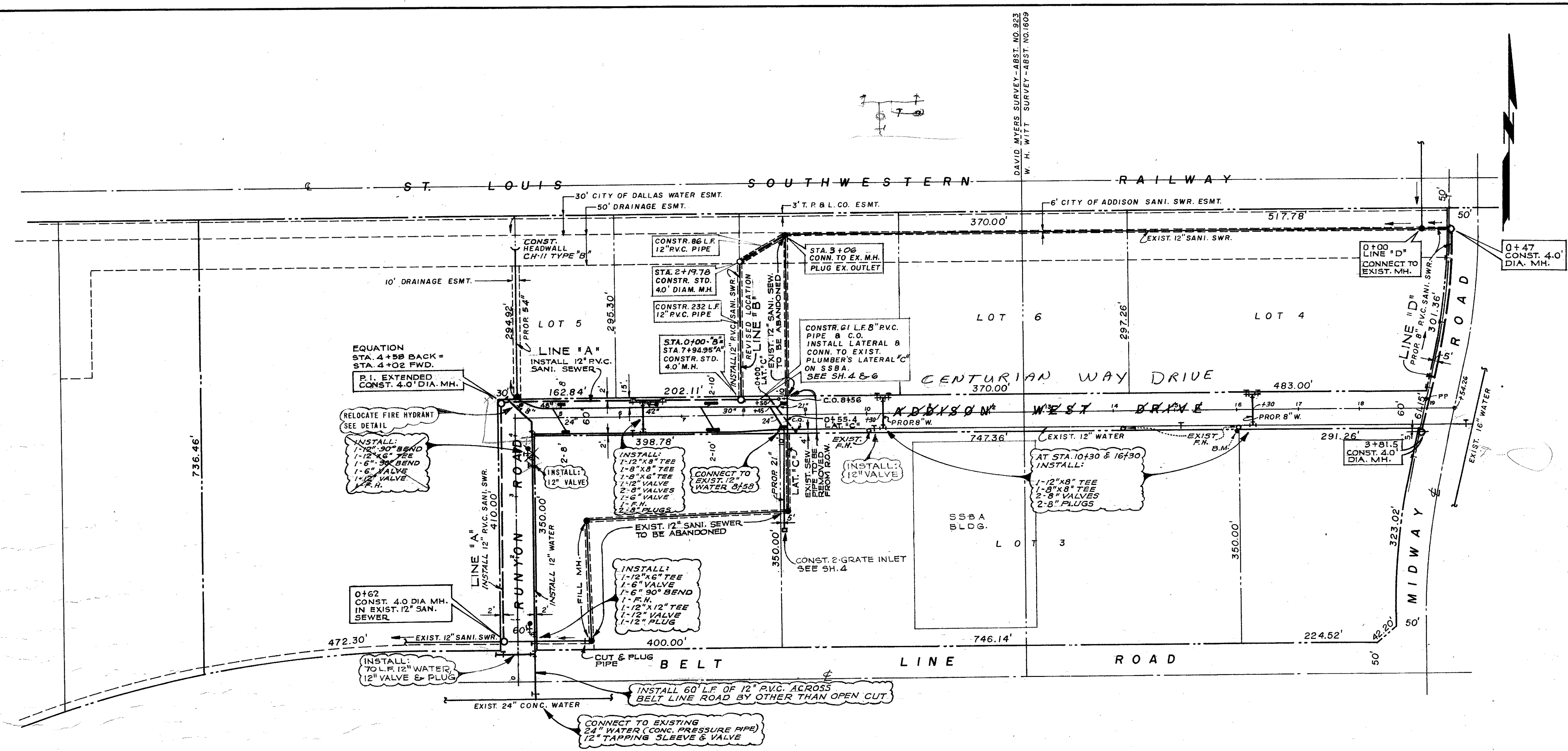


SUBDIVISION: ADDISON WEST INDUSTRIAL PARK
 DESIGNED: Powell & Powell, Engineers Date: _____
 R.O.W. APPROVED: _____ Date: _____
 ENGINEER OF DESIGN: _____ Date: _____
 CONTRACT NO. _____

REVISED JUNE 6, 1979 TO SHOW RELOCATION OF FIRE HYDRANT.
 REVISED: MAY 1, 1979

BENCH MARK: TOP OF CURB NORTHEAST CORNER OF CONCRETE PARKING LOT, ON SSSA PROPERTY. ELEV. 615.74.

CITY OF ADDISON, TEXAS ADDISON WEST INDUSTRIAL PARK	
WATER - SANITARY SEWER	
WATER UTILITIES DEPARTMENT	
SCALE: 1"=100'	
POWELL & POWELL, ENGINEERS 430 ONE LEMMON PARK NORTH DALLAS, TEXAS DWG. NO. S-6413	FEBRUARY, 1979 DALLAS, TEXAS 2908-78-1-1.1



SUBDIVISION: ADDISON WEST INDUSTRIAL PARK
 DESIGNED: Powell & Powell, Engineers Date: _____
 R.O.W. APPROVED: _____ Date: _____
 ENGINEER OF DESIGN: _____ Date: _____
 Water Utilities Department
 CONTRACT NO. _____

REVISED JUNE 6, 1979 TO SHOW RELOCATION OF FIRE HYDRANT.
 REVISED: MAY 1, 1979

BENCH MARK: TOP OF CURB NORTHEAST CORNER OF CONCRETE PARKING LOT. ON SSBA PROPERTY. ELEV. 615.74.

CITY OF ADDISON, TEXAS ADDISON WEST INDUSTRIAL PARK WATER - SANITARY SEWER WATER UTILITIES DEPARTMENT
SCALE: 1" = 100' POWELL & POWELL, ENGINEERS 430 ONE LEMON PARK NORTH DALLAS, TEXAS DWG. NO. S-641.3
FEBRUARY, 1979 2908-79-1-1.1

5
6