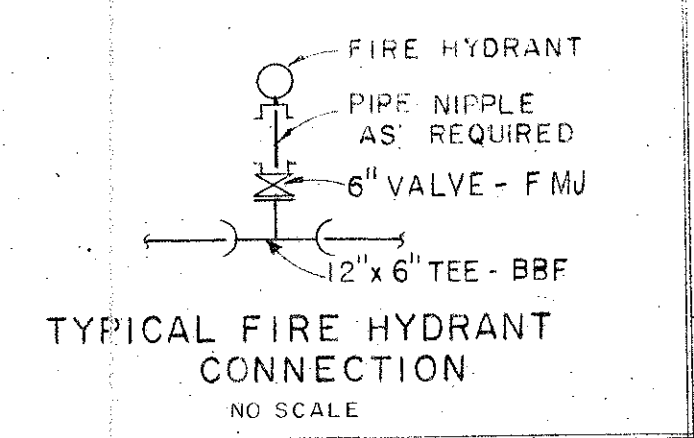


Revised 11-9-70  
3-18-71  
3-12-71 Grade & water  
4-19-71 As built

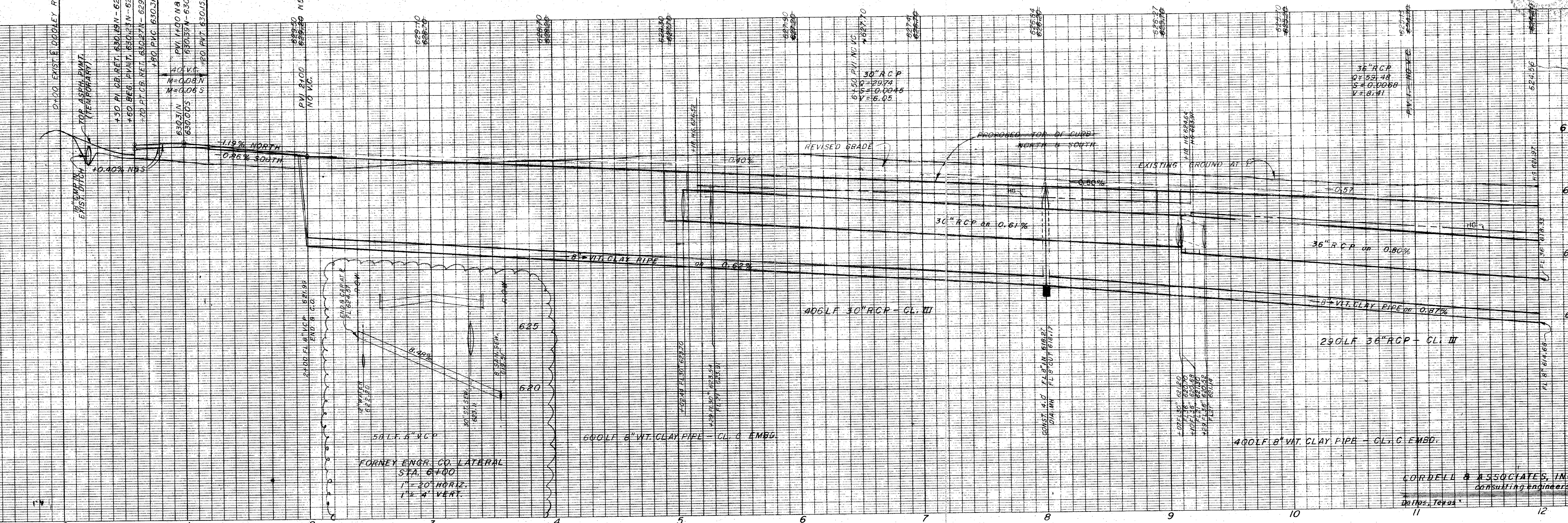
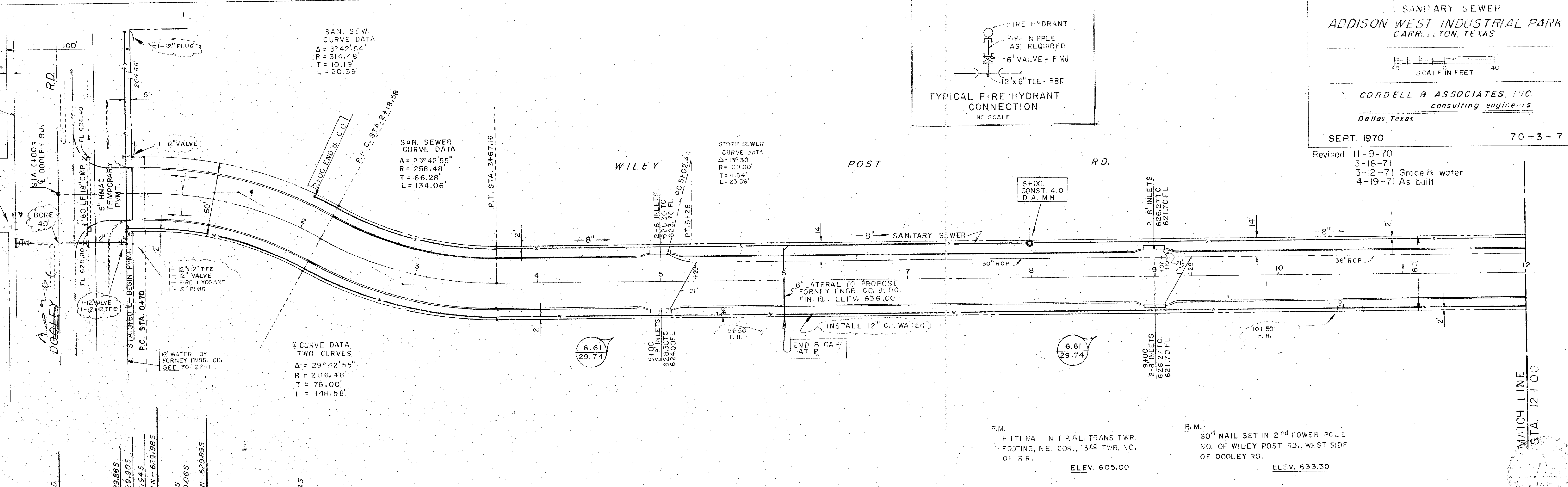


SAN. SEW. CURVE DATA  
 $\Delta = 39^{\circ}42'54''$   
 $R = 314.48'$   
 $T = 10.19'$   
 $L = 20.39'$

SAN. SEW. CURVE DATA  
 $\Delta = 29^{\circ}42'55''$   
 $R = 258.48'$   
 $T = 66.28'$   
 $L = 134.06'$

STORM SEWER CURVE DATA  
 $\Delta = 13^{\circ}30'$   
 $R = 100.00'$   
 $T = 11.84'$   
 $L = 23.56'$

CURVE DATA TWO CURVES  
 $\Delta = 29^{\circ}42'55''$   
 $R = 258.48'$   
 $T = 76.00'$   
 $L = 148.58'$



ADDISON WEST INDUSTRIAL PARK — WILEY POST RD. —

ENGINE DIETZEN CO.  
REPRINTED  
STATE OF TEXAS

ON 100% AND 20% MADE IN U.S.A.  
PRINTED IN U.S.A.

**CORDELL & ASSOCIATES, INC.**  
consulting engineers  
Dallas, Texas





**CORDELL & ASSOCIATES, INC.**  
consulting engineers  
Dallas Texas

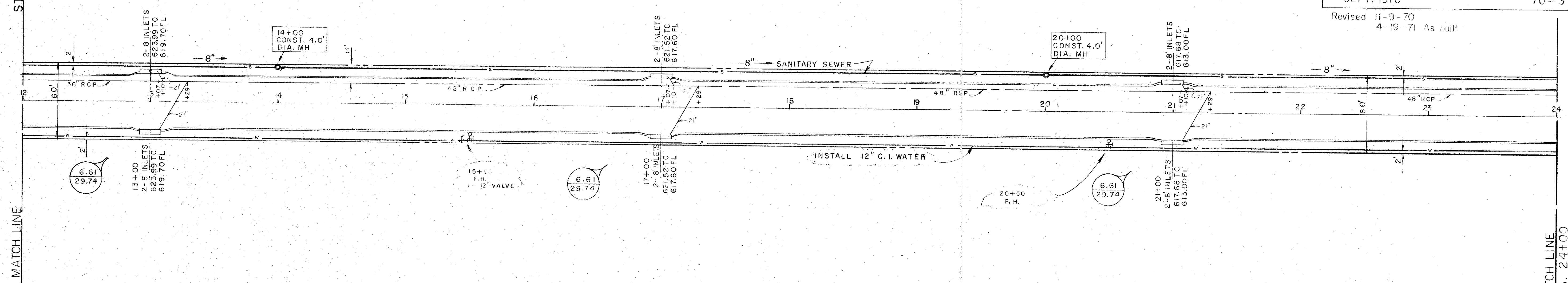
SEPT. 1970 70-3-8

Revised 11-9-70  
4-19-71 As built

WILEY POST ROAD

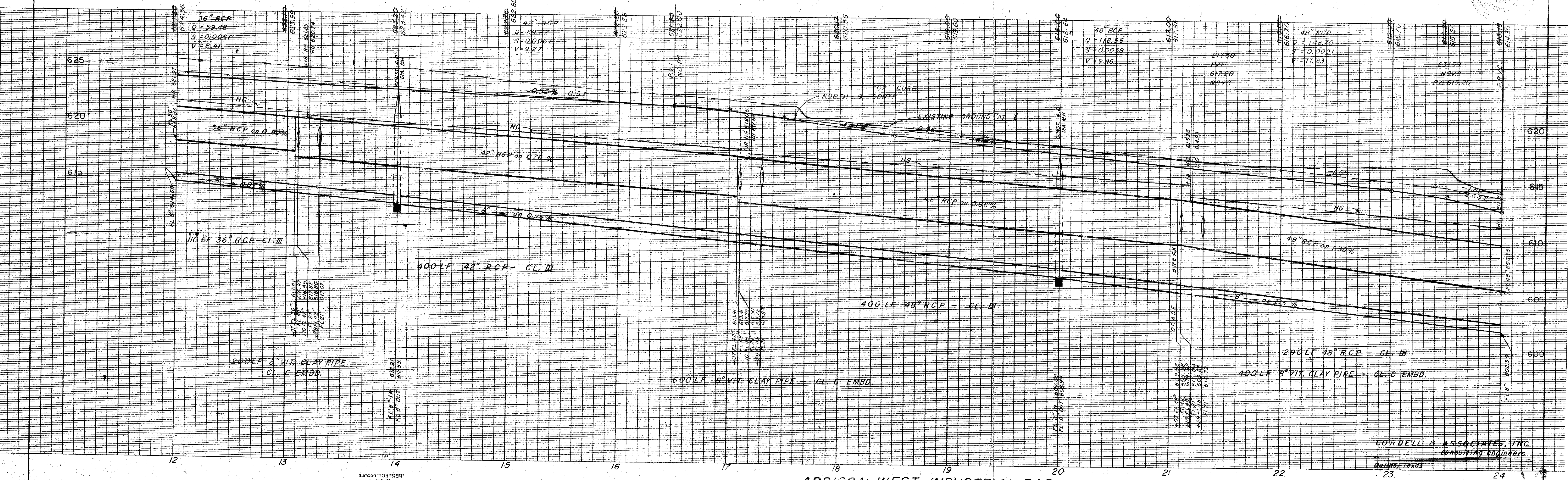
STA. 12+00  
MATCH LINE

MATCH LINE  
STA. 24+00



B.M. HILT NAIL IN T.R. & L. TRANS. TWR. FOOTING, NE. COR., 3RD TWR. HO. OF RR. ELEV. 605.00

B.M. 60" NAIL SET IN 2" POWER POLE NO. OF WILEY POST RD., WEST SIDE OF DOOLEY RD. ELEV. 633.30



— ADDISON WEST INDUSTRIAL PARK — WILEY POST RD. —

**CORDELL & ASSOCIATES, INC.**  
consulting engineers  
Dallas, Texas

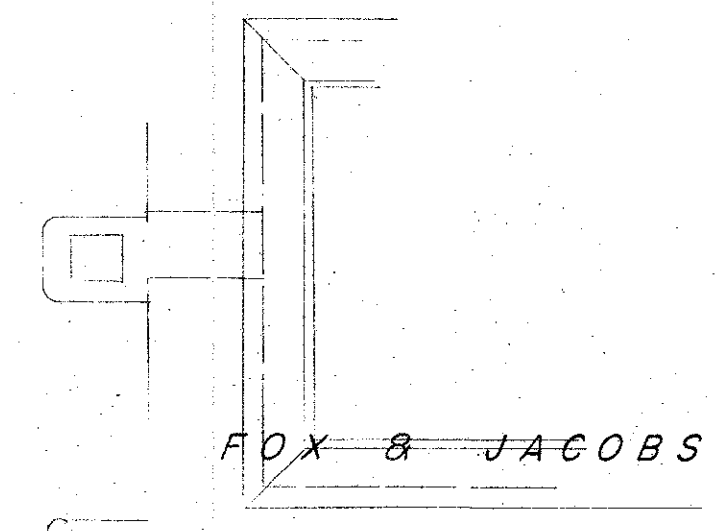
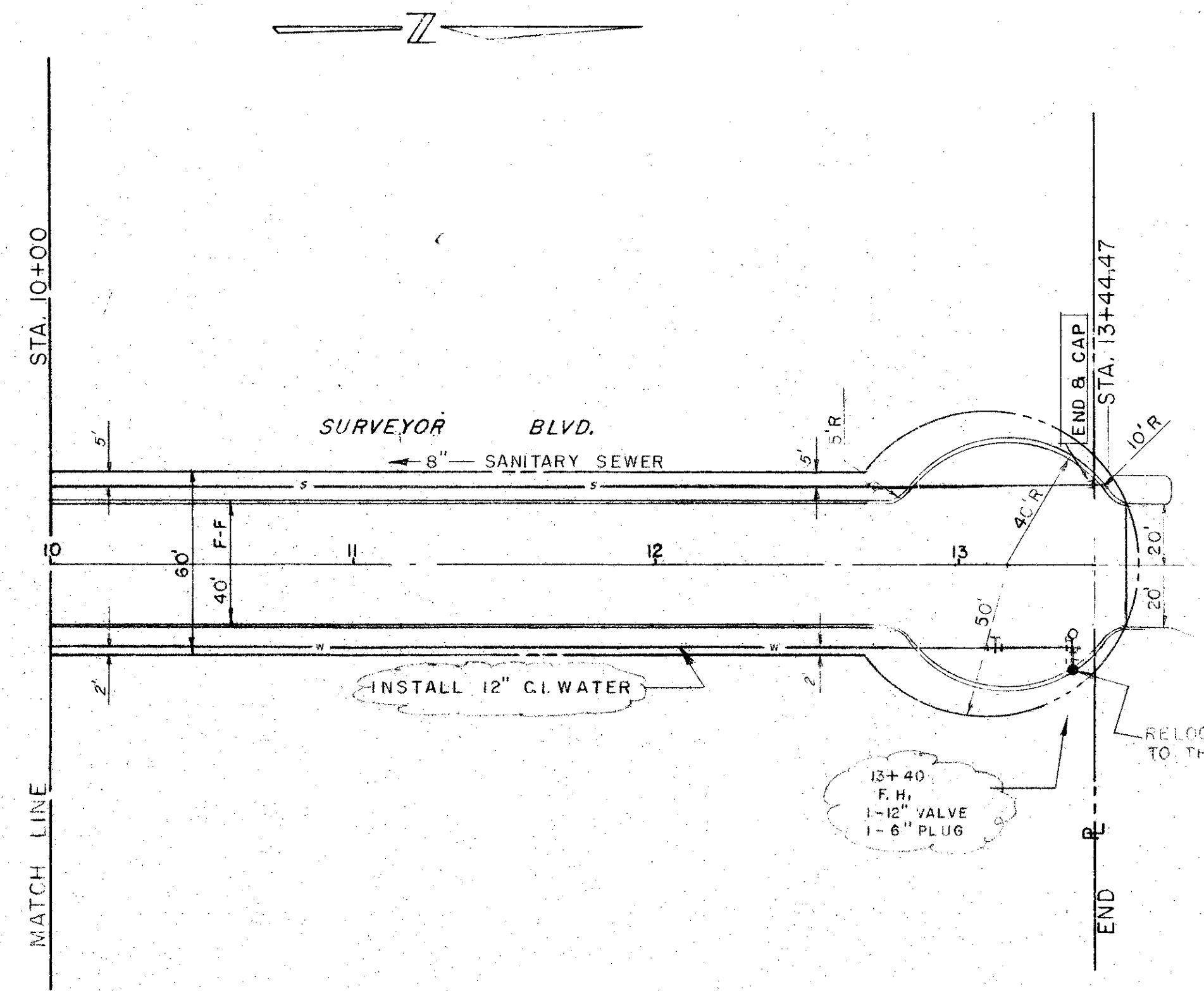
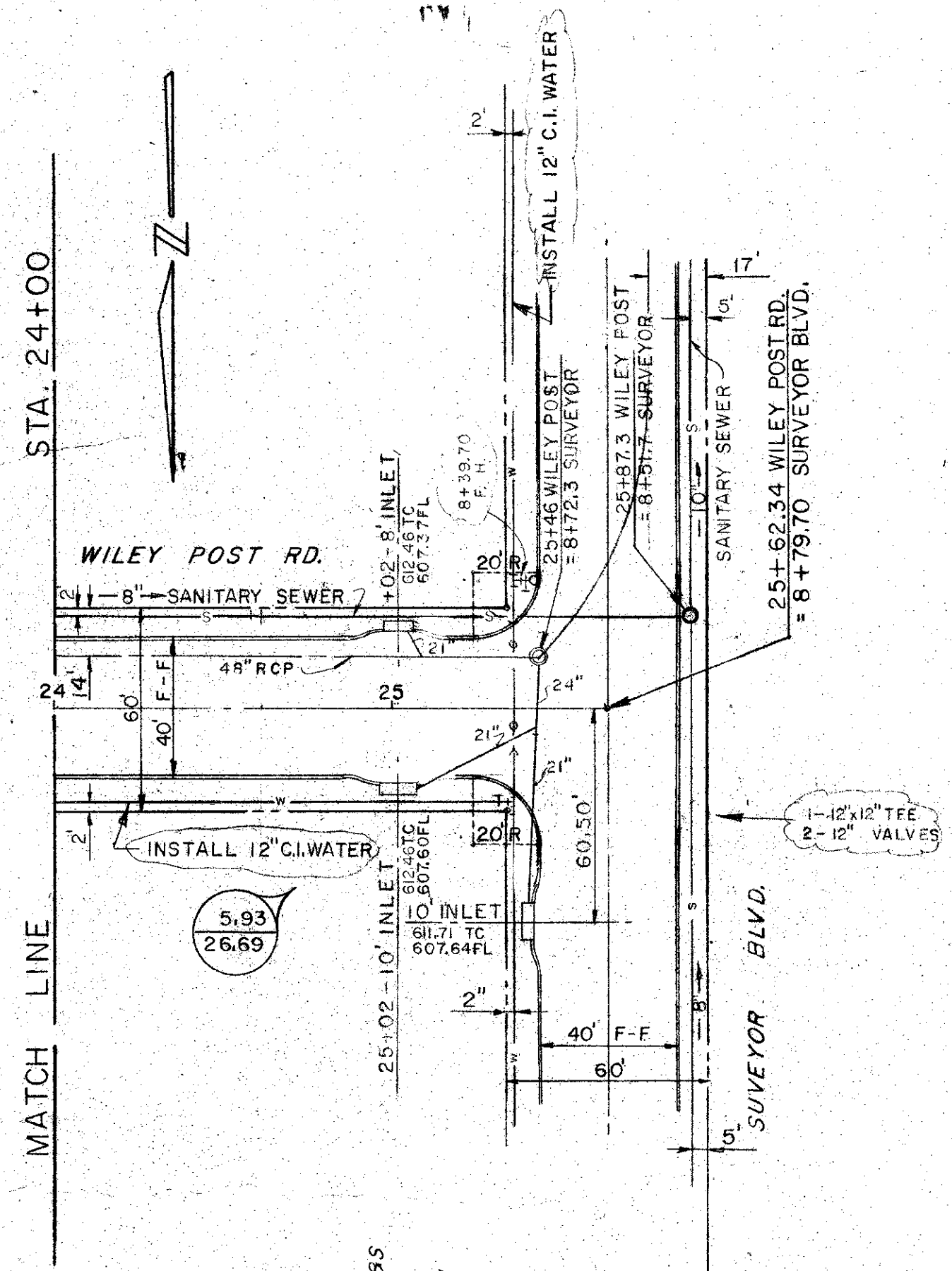




CORDELL & ASSOCIATES, INC.  
consulting engineers  
Dallas, Texas

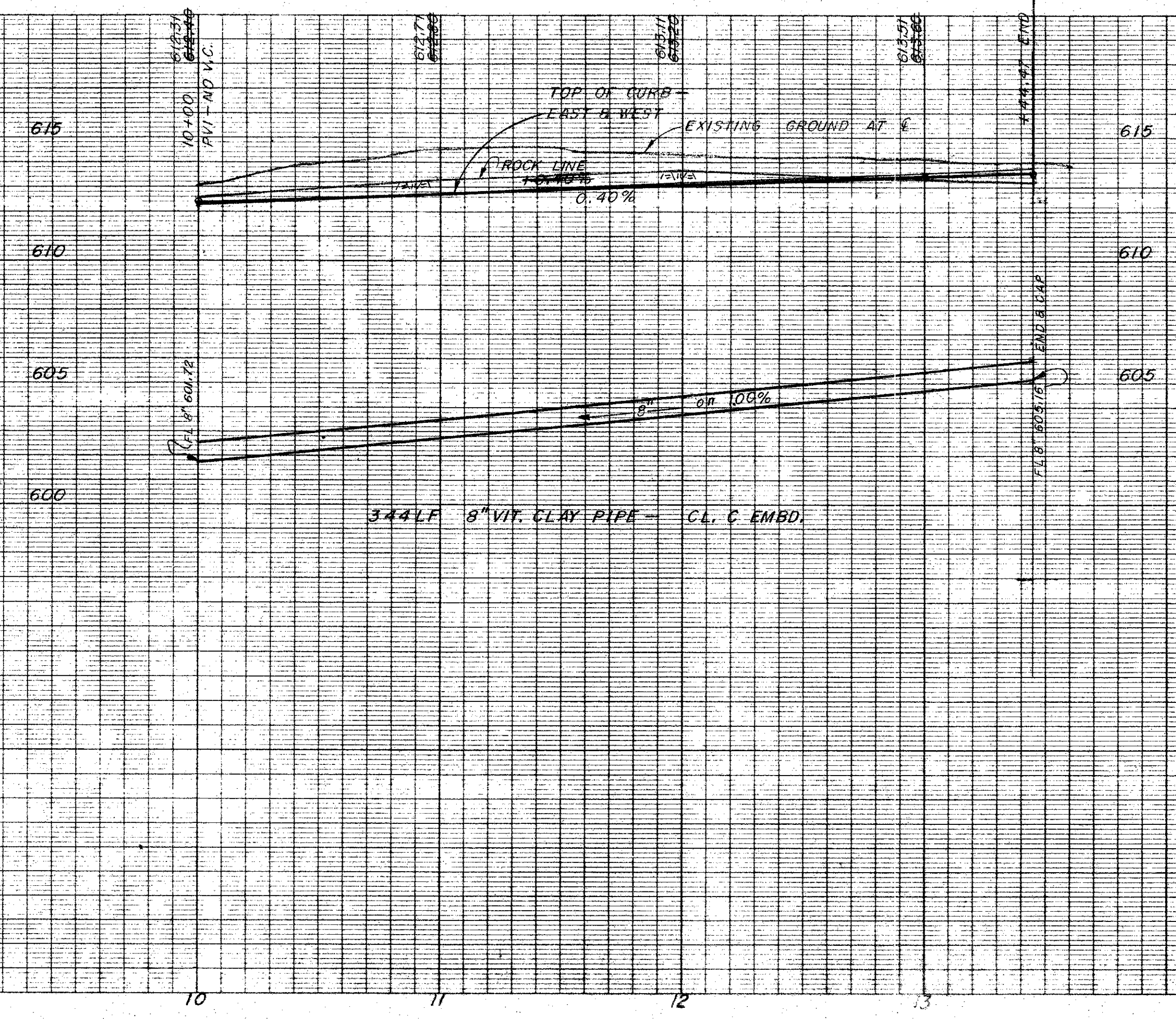
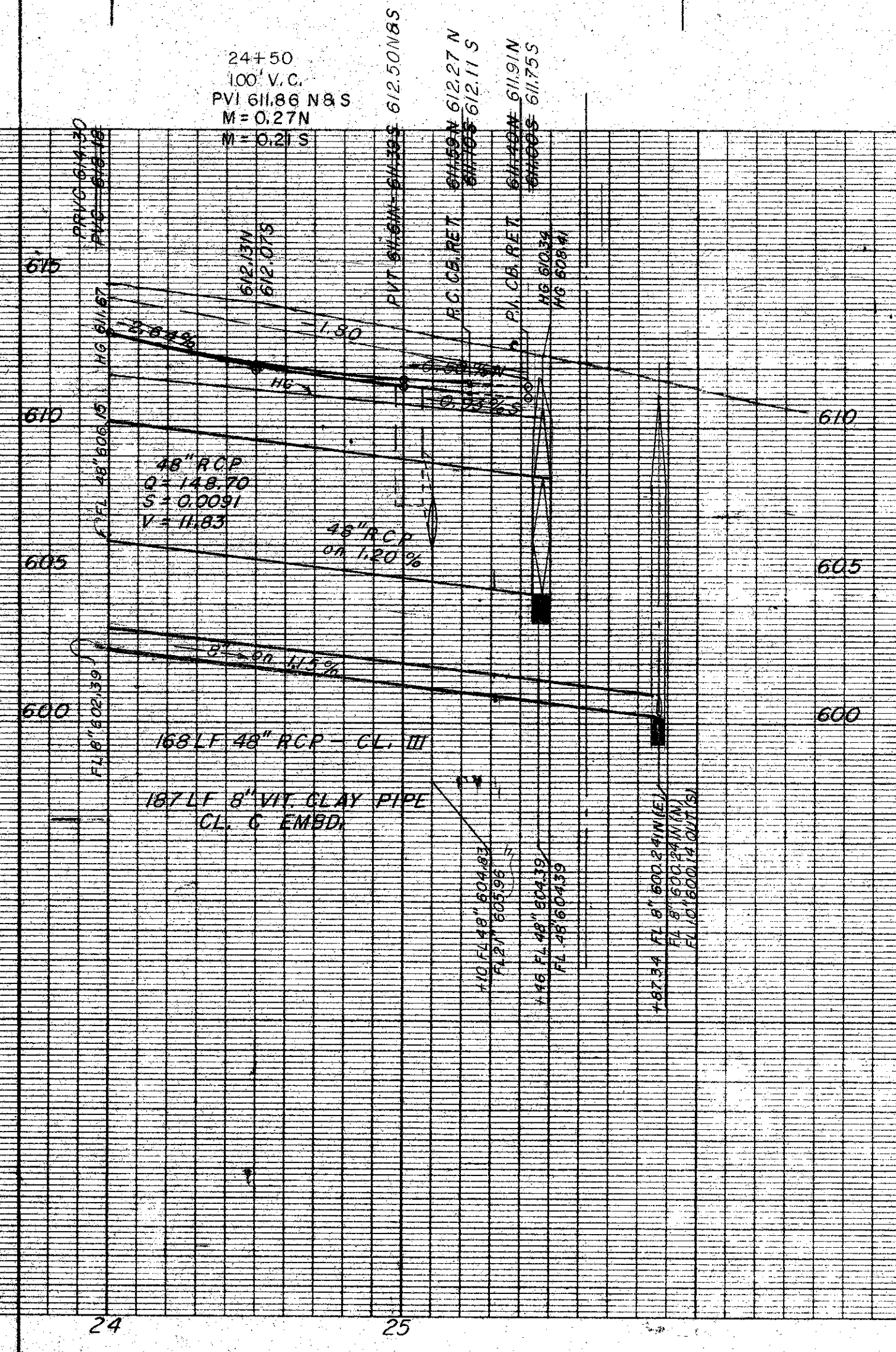
SEPT. 1970 70-3-9

Revised 11-9-70  
2-26-71  
3-1-71 Grade  
4-19-71 As built



B.M. MULTI NAIL IN T.R. & L. TRANS. TWR. FOOTING, NE. COR., 3RD TWR. NO. OF RR. ELEV. 605.00

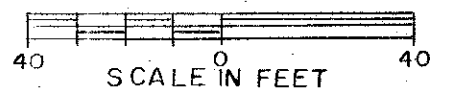
B.M. 60d NAIL SET IN 2ND POWER POLE NO. OF WILEY POST RD., WEST SIDE OF DOOLEY RD. ELEV. 633.30



CORDELL & ASSOCIATES, INC.  
consulting engineers  
Dallas, Texas



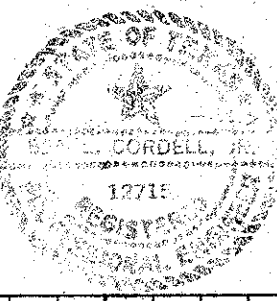
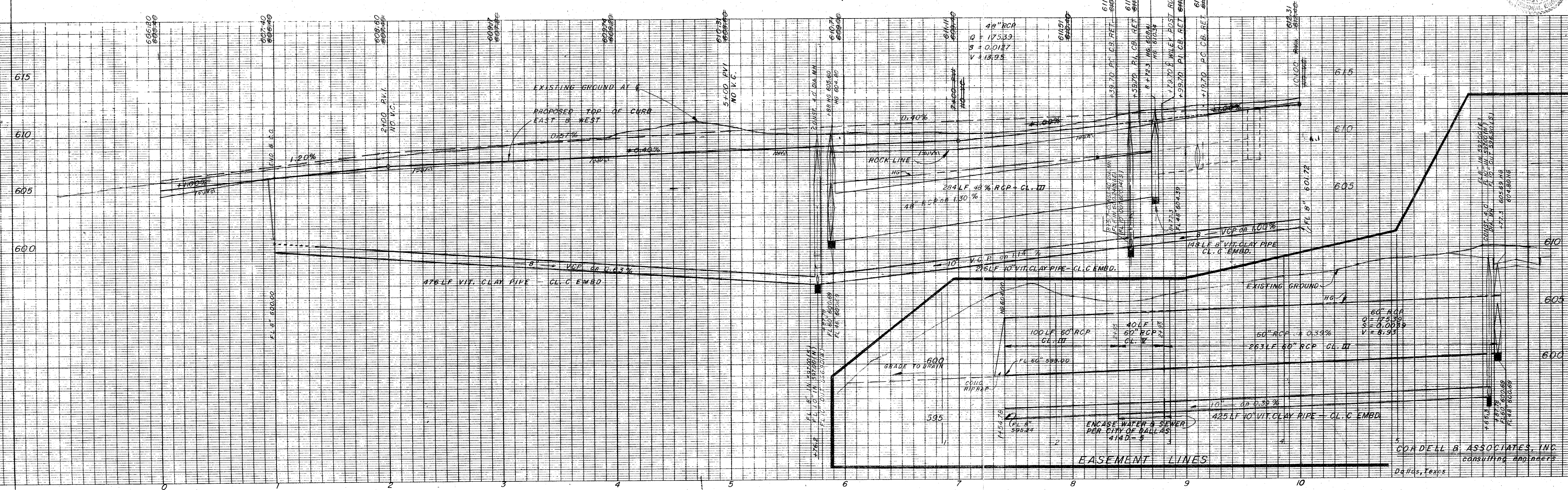
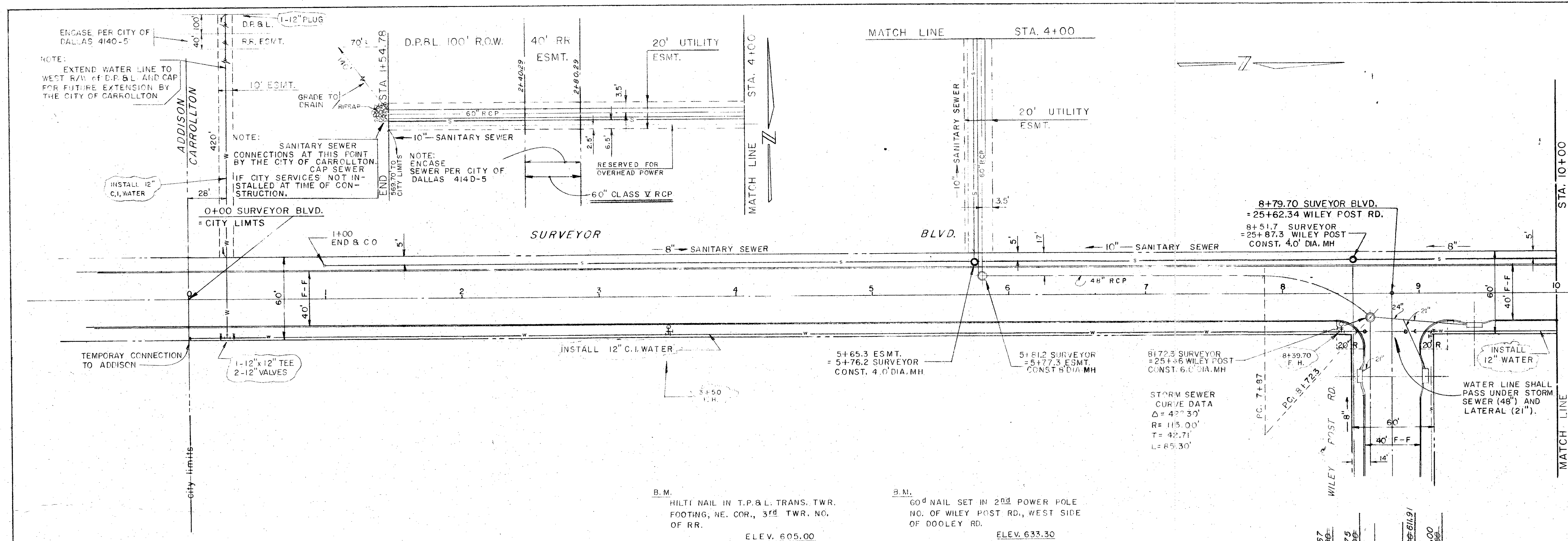
PAVING, STORM SEWER, WATER  
& SANITARY SEWER  
ADDISON WEST INDUSTRIAL PARK  
CARROLLTON, TEXAS



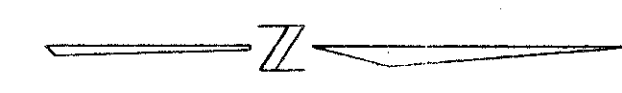
CORDELL & ASSOCIATES, INC.  
consulting engineers  
Dallas, Texas

SEPT. 1970 70-3-10

Revised 11-9-70  
11-18-70  
3-1-71 Grade  
4-19-71 As built



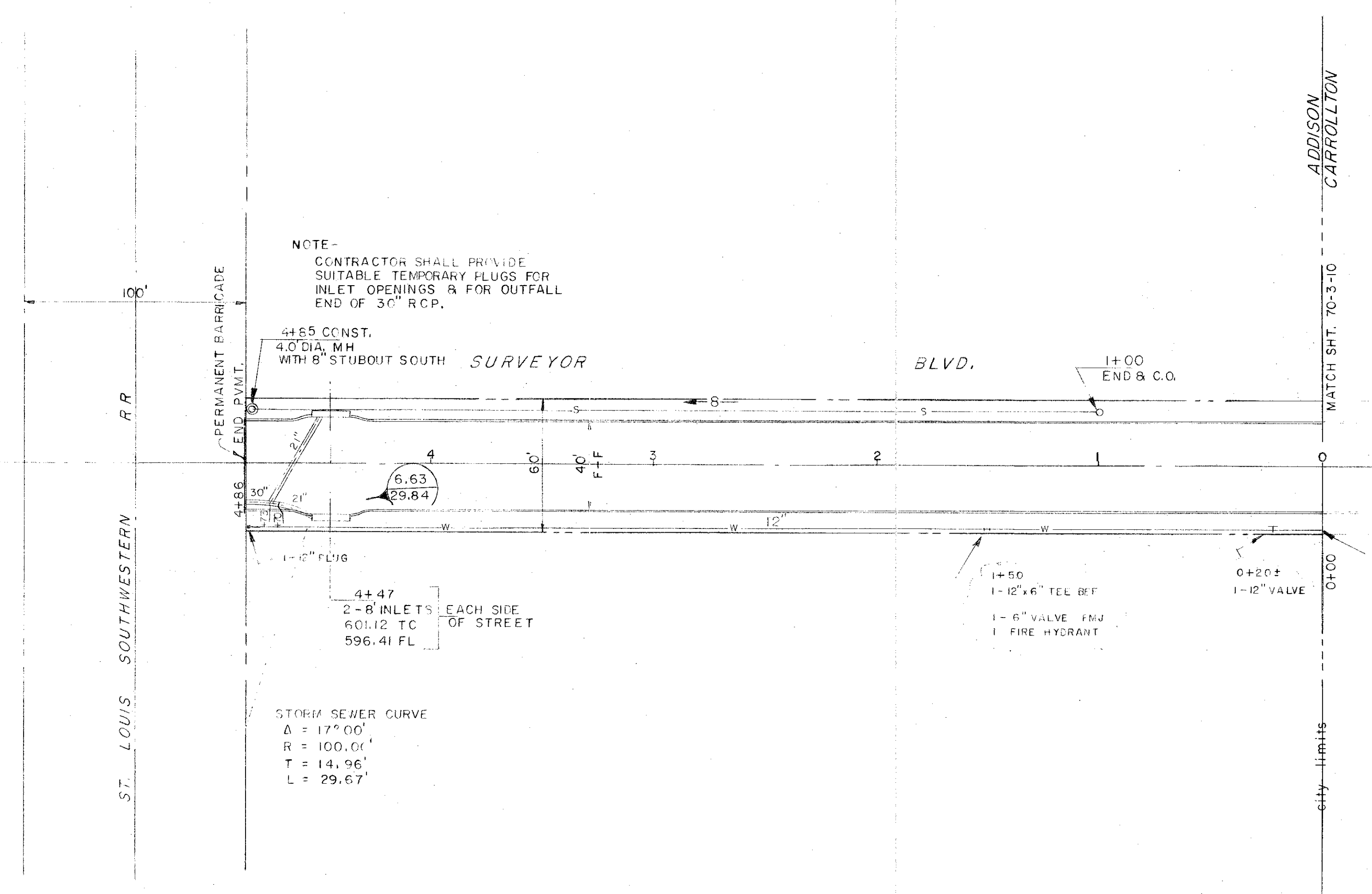




ALL WORK SHALL CONFORM TO APPLICABLE CITY OF CARROLLTON STANDARDS AND SPECIFICATIONS.

Revised 3-1-71 Grade  
4-19-71 As built

2000



NOTE-  
CONTRACTOR SHALL PROVIDE SUITABLE TEMPORARY PLUGS FOR INLET OPENINGS & FOR OUTFALL END OF 30\"/>

4x85 CONST. 4.0' DIA. MH WITH 6' STUBOUT SOUTH SURVEYOR

4+47  
2-8\"/>

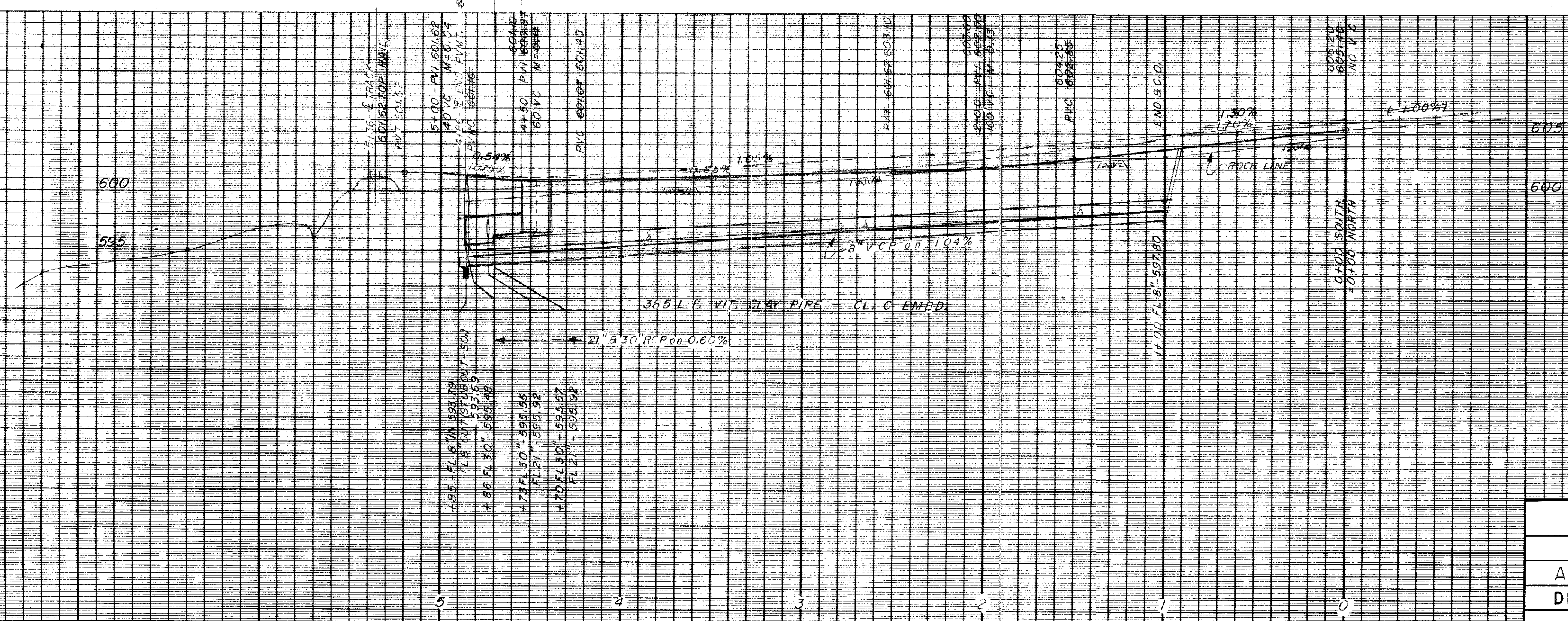
STORM SEWER CURVE  
Δ = 17° 00'  
R = 100.01'  
T = 14.96'  
L = 29.67'

TEMPORARY CONNECTION  
CONNECT TO 12\"/>

15 LF 30\"/>

11.96  
PVI  
60+3.25  
K0VC

B.M.  
HILTI NAIL IN T.P.&L. TRANS. TWR. FOOTING, NE. COR., 3rd TWR. NO. OF R.R.  
ELEV. 605.00



PAVING, STORM SEWER, WATER  
AND SANITARY SEWER  
ADDISON WEST INDUSTRIAL PARK  
DEPARTMENT OF PUBLIC WORKS  
CITY OF ADDISON, TEXAS

CORDELL & ASSOCIATES, INC.  
consulting engineers  
Dallas, Texas 70-3-17

DESIGN	DRAWN	DATE	SCALE	NOTES	FILE	NO.
		SF.P.T. 1970	H. 1"=30' V. 1"=6"			

2  
2