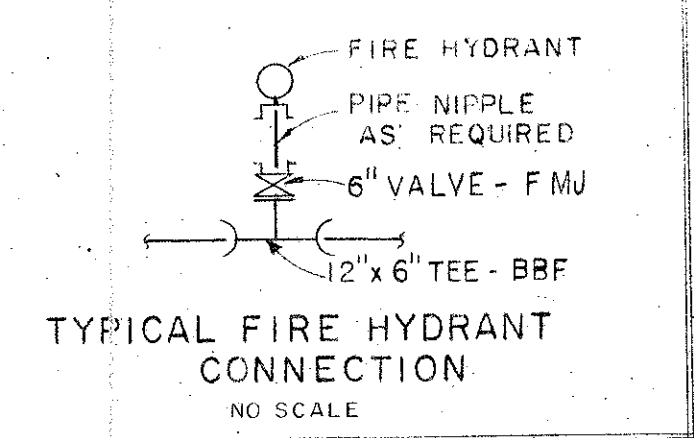


Revised 11-9-70
3-18-71
3-12-71 Grade & water
4-19-71 As built

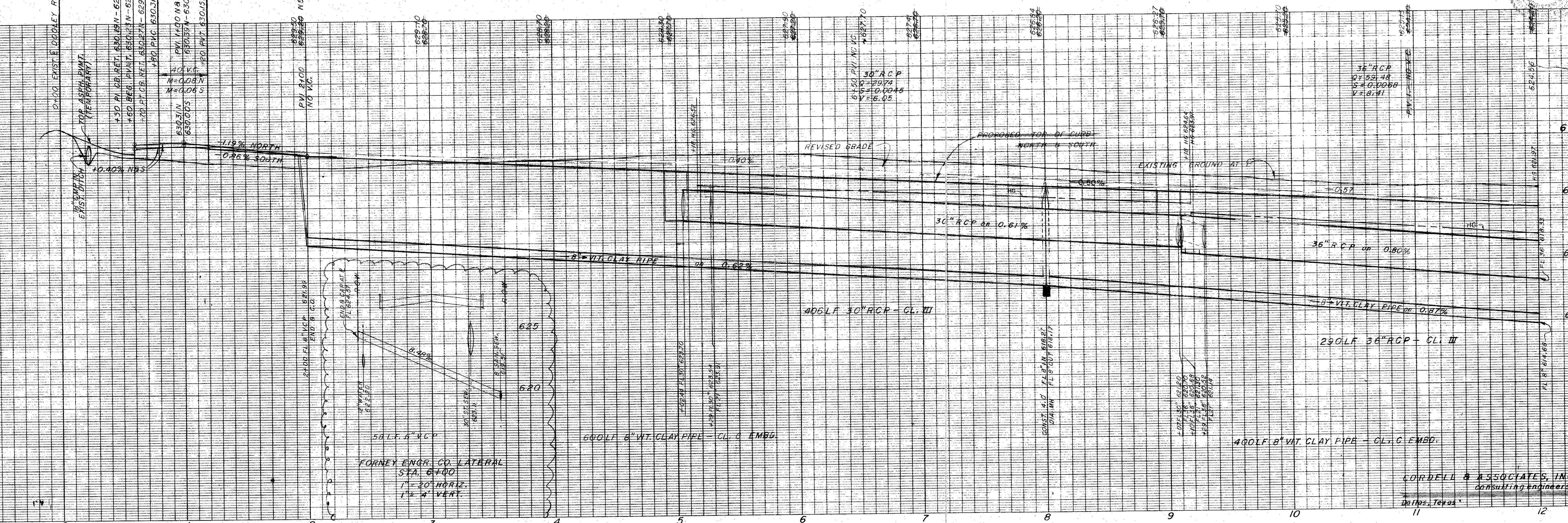
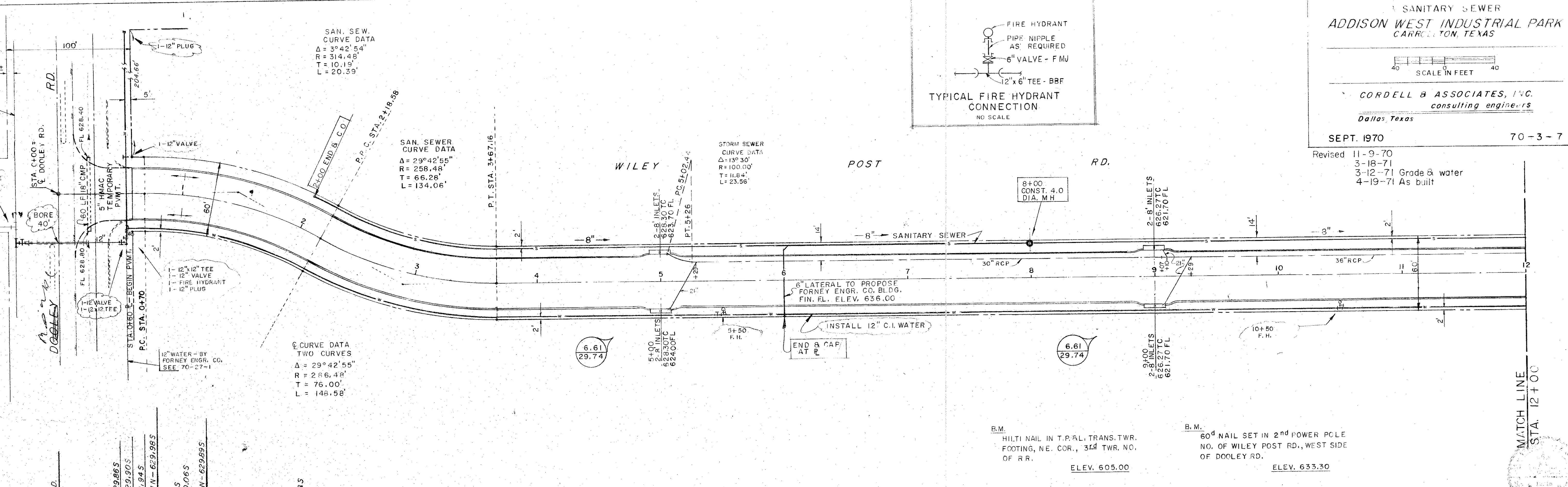


SAN. SEW. CURVE DATA
 $\Delta = 39^{\circ}42'54''$
 $R = 314.48'$
 $T = 10.19'$
 $L = 20.39'$

SAN. SEW. CURVE DATA
 $\Delta = 29^{\circ}42'55''$
 $R = 258.48'$
 $T = 66.28'$
 $L = 134.06'$

STORM SEWER CURVE DATA
 $\Delta = 13^{\circ}30'$
 $R = 100.00'$
 $T = 11.84'$
 $L = 23.56'$

CURVE DATA TWO CURVES
 $\Delta = 29^{\circ}42'55''$
 $R = 258.48'$
 $T = 76.00'$
 $L = 148.58'$



ENGINEER: CORDELL & ASSOCIATES, INC. CONSULTING ENGINEERS, DALLAS, TEXAS