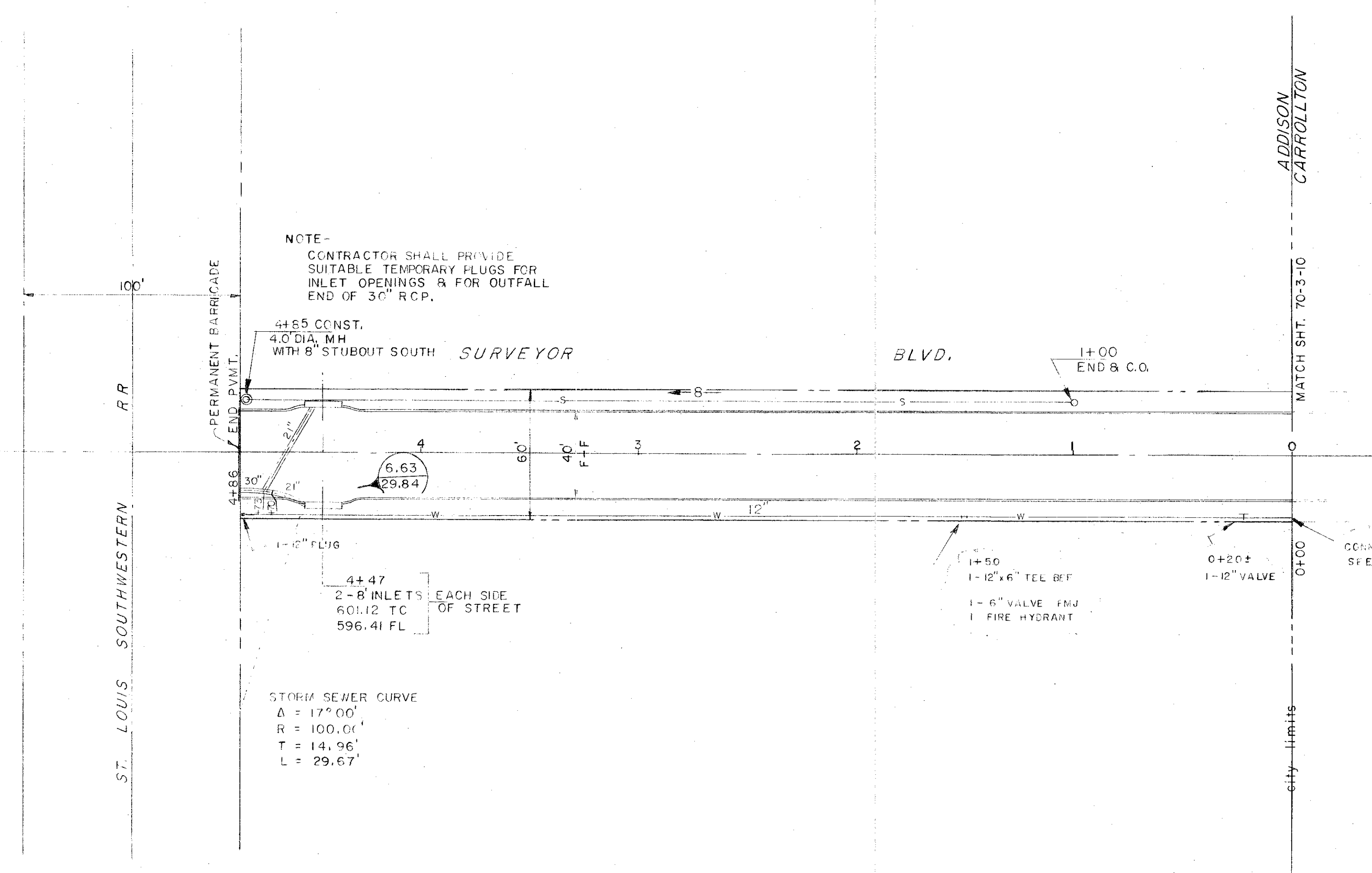


ALL WORK SHALL CONFORM TO APPLICABLE CITY OF CARROLLTON STANDARDS AND SPECIFICATIONS.

Revised 3-1-71 Grade
4-19-71 As built

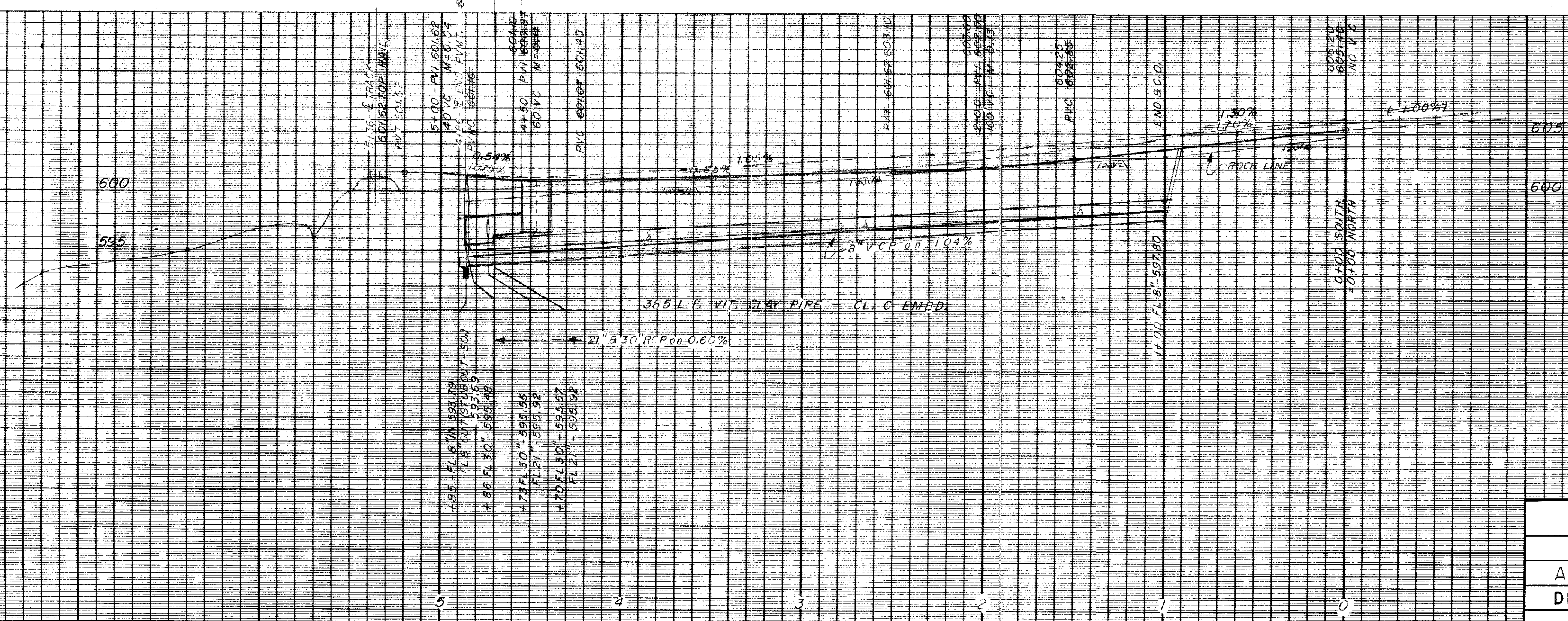
2000



15 LF 30" RCP
CL. III
Q = 29.84
S = 0.0045
V = 6.07

11.96
P.V.
60-3.25
R.D.V.C.

B.M.
HILTI NAIL IN T.P.&L. TRANS. TWR.
FOOTING, NE. COR., 3rd TWR. NO.
OF R.R.
ELEV. 605.00



2
2

PAVING, STORM SEWER, WATER
AND SANITARY SEWER
ADDISON WEST INDUSTRIAL PARK
DEPARTMENT OF PUBLIC WORKS
CITY OF ADDISON, TEXAS

CORDELL & ASSOCIATES, INC.
consulting engineers
Dallas, Texas 70-3-17

DESIGN	DRAWN	DATE	SCALE	NOTES	FILE	NO.
		SF.F.T. 1970	H. 1" = 10' V. 1" = 6"			