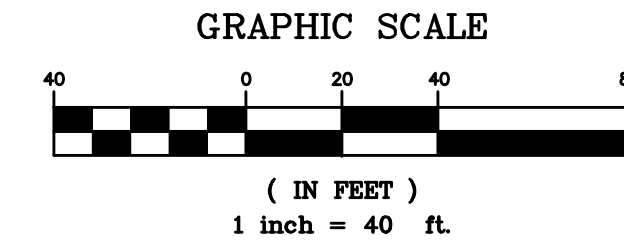
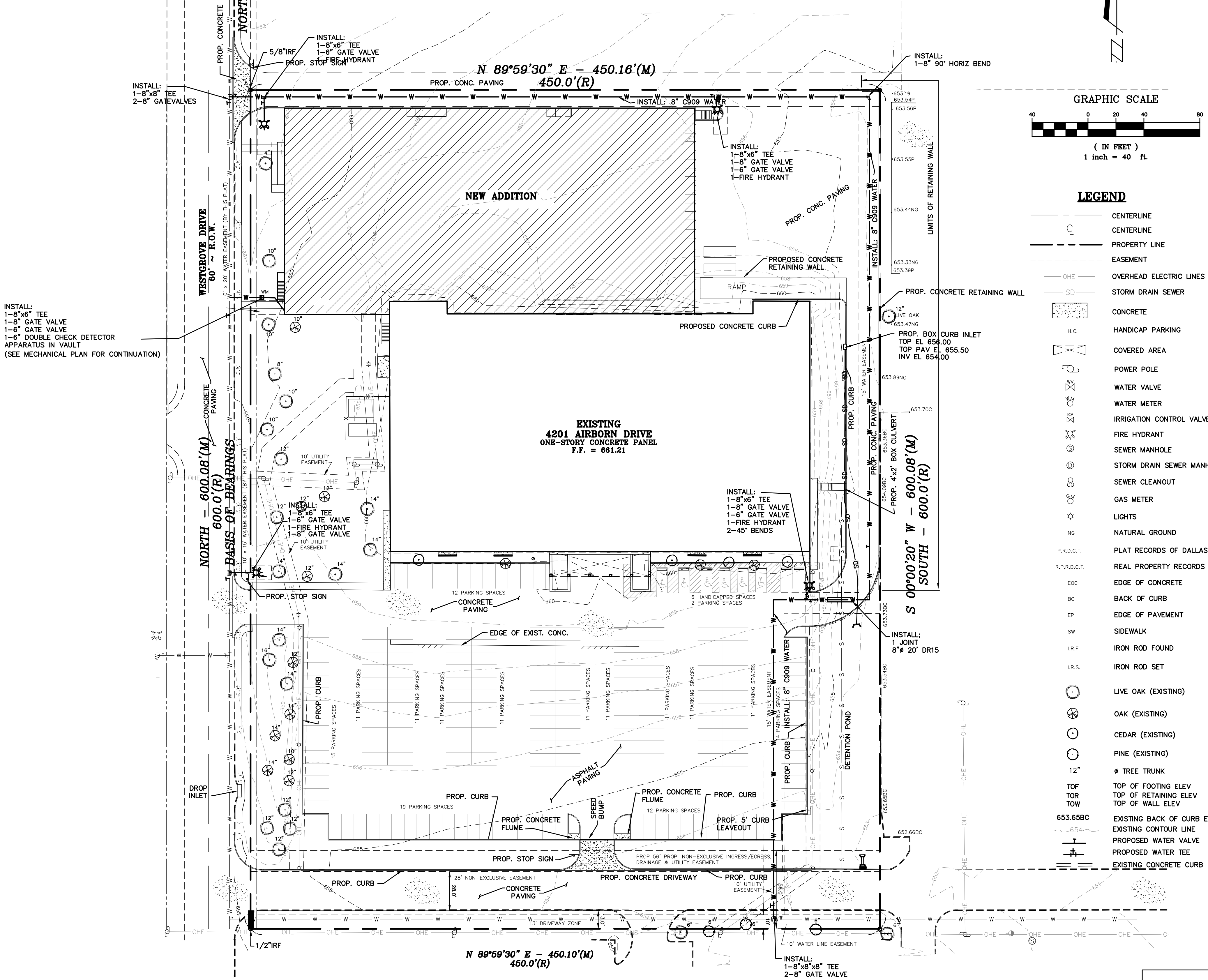


LOT 8, BLOCK A  
CARROLL ESTATES



**LEGEND**

- CENTERLINE
- CENTERLINE
- - - PROPERTY LINE
- - - EASEMENT
- OHE OVERHEAD ELECTRIC LINES
- SD STORM DRAIN SEWER
- CONCRETE
- H.C. HANDICAP PARKING
- COVERED AREA
- POWER POLE
- WATER VALVE
- WATER METER
- IRRIGATION CONTROL VALVE
- FIRE HYDRANT
- SEWER MANHOLE
- STORM DRAIN SEWER MANHOLE
- SEWER CLEANOUT
- GAS METER
- LIGHTS
- NG NATURAL GROUND
- P.R.D.C.T. PLAT RECORDS OF DALLAS COUNTY, TEXAS
- R.P.R.D.C.T. REAL PROPERTY RECORDS OF DALLAS COUNTY, TEXAS
- EOC EDGE OF CONCRETE
- BC BACK OF CURB
- EP EDGE OF PAVEMENT
- SW SIDEWALK
- I.R.F. IRON ROD FOUND
- I.R.S. IRON ROD SET
- LIVE OAK (EXISTING)
- OAK (EXISTING)
- CEDAR (EXISTING)
- PINE (EXISTING)
- 12" TREE TRUNK
- TOP OF FOOTING ELEV
- TOP OF RETAINING ELEV
- TOP OF WALL ELEV
- 653.65BC EXISTING BACK OF CURB ELEV
- 654 EXISTING CONTOUR LINE
- PROPOSED WATER VALVE
- PROPOSED WATER TEE
- EXISTING CONCRETE CURB

**SURVEY CONTROL**

CONTROL MONUMENT FOUND #00A-13  
630' WEST FROM INTERSECTION OF  
ADDISON ROAD & WESTGROVE DRIVE  
THEN 15.7' SOUTH FROM BACK OF CURB,  
5' FROM STREET SIGN & 8' SOUTH TO BACK  
OF CURB OF WEST GROVE ROAD  
US SURVEY FEET  
NAVD 88 ELEVATION 642.09  
MONUMENT: 2" BRASS DISK STAMPED "TXDOT  
00A-13 GPS" STATE PLANE COORDINATES  
NORTHING: 7042028.880  
EASTING: 2479820.516  
DALLAS COUNTY SCALE FACTOR: 1.000136506  
ELEVATIONS ARE NAVD 88 BASED UPON  
TXDOT VRS NETWORK

NOTE:  
FIRE HYDRANTS SHALL BE LOCATED BETWEEN 3' & 6' BEHIND CURB.

**AS BUILT**  
APRIL 30, 2010  
REV:10/4/10



| DATE    | REVISION DESCRIPTION |
|---------|----------------------|
| 6/16/08 | RHT                  |
| 7-3-08  | EASEMENTS            |
| RHT     |                      |
| 8-3-08  | MISCELLANEOUS        |
| RHT     |                      |
| 9-12-08 | MISCELLANEOUS        |
| RHT     |                      |
| 9-26-08 | MISCELLANEOUS        |
| RHT     |                      |

**UTILITY PLAN**  
BEING A REPLAT WESTGROVE AND AIRBORN  
BEING A REPLAT OF BLOCK A, CARROLL ESTATES

TOWN OF ADDISON      DALLAS COUNTY      TEXAS

|               |                 |                      |                |
|---------------|-----------------|----------------------|----------------|
| DATE: 1-9-08  | SCALE: 1" = 40' | FILE NUMBER: 4221AIR | DATA FILE:     |
| DRAWN BY: MGB | CHECKED BY: GKK | FIELD BOOK:          | SHEET 10 OF 14 |

**KISTENMACHER ENGINEERING COMPANY, INC.**  
CONSULTING ENGINEERING • LAND PLANNING • SURVEYING  
1420 GERONIMO DRIVE, SUITE A2 • EL PASO, TEXAS 79925 • 915-778-4475  
6336 GREENVILLE AVE, SUITE C • DALLAS, TEXAS 75206 • 214-234-0011

REVISED: 8/4/09 MISCELLANEOUS  
REVISED: 4/17/09 MISCELLANEOUS  
REVISED: 2/25/09 MISCELLANEOUS  
REVISED: 12/23/08 MISCELLANEOUS  
REVISED: 11/26/08 MISCELLANEOUS  
REVISED: 11/18/08 MISCELLANEOUS