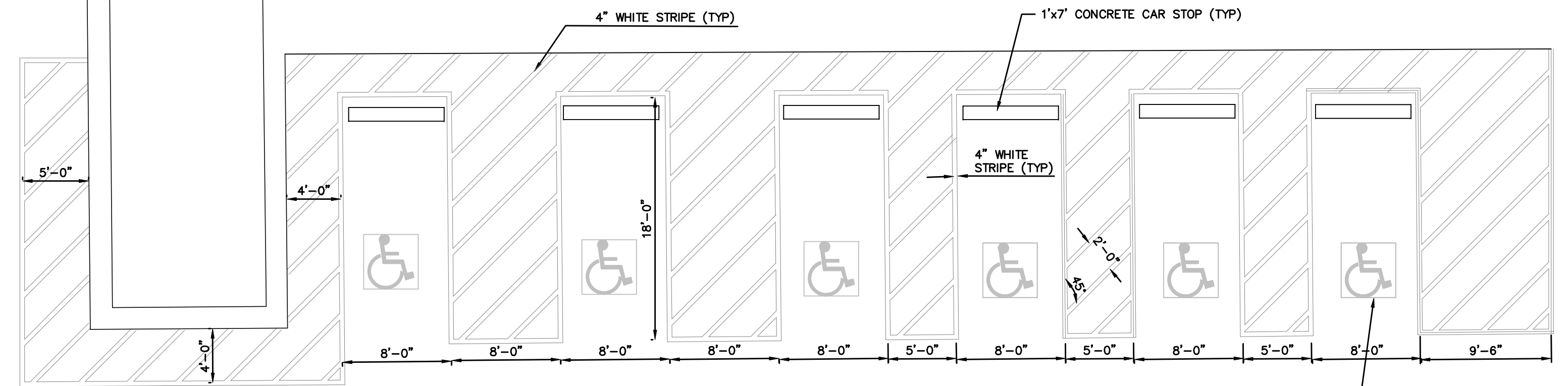
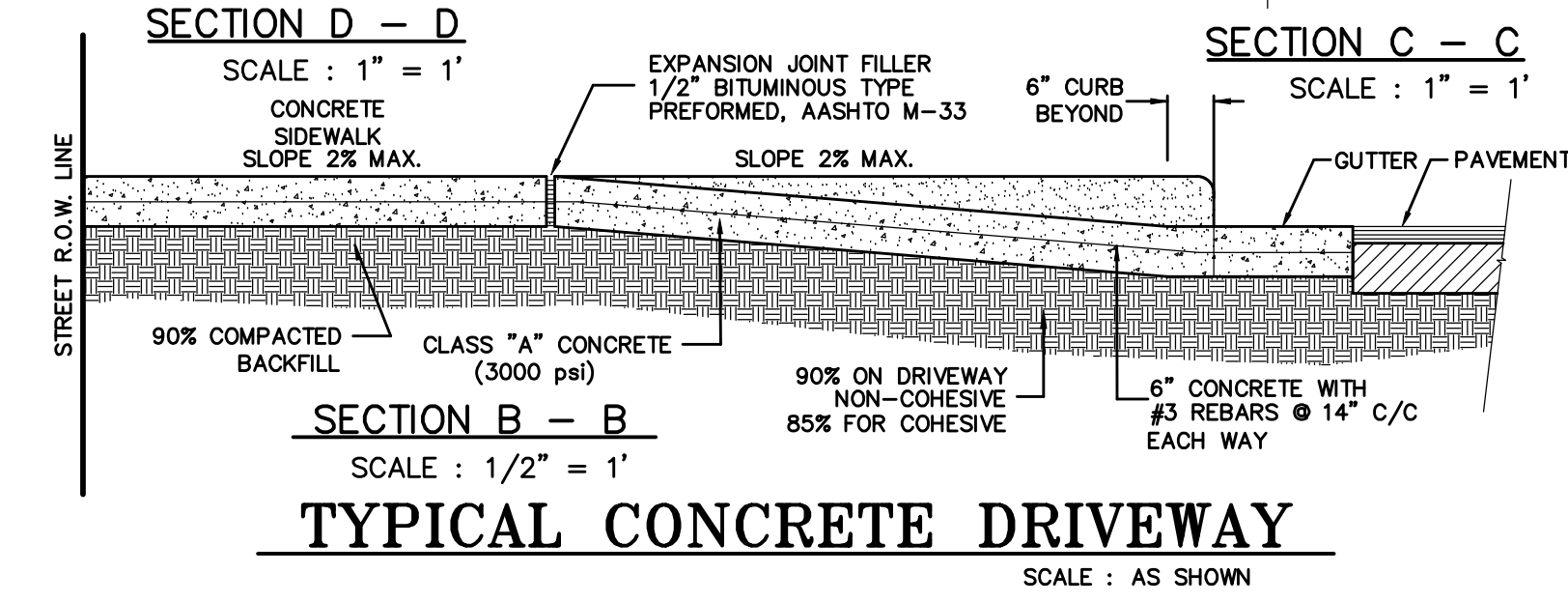


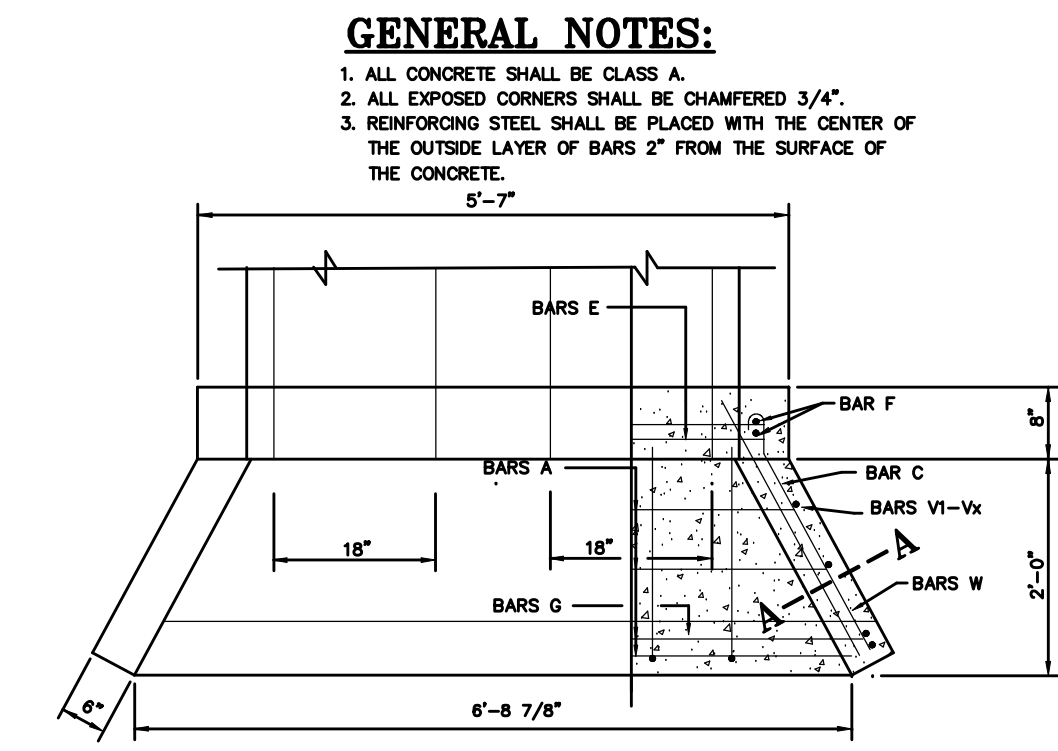
STANDARD CONCRETE CURB
SCALE: 1 1/2" = 1'



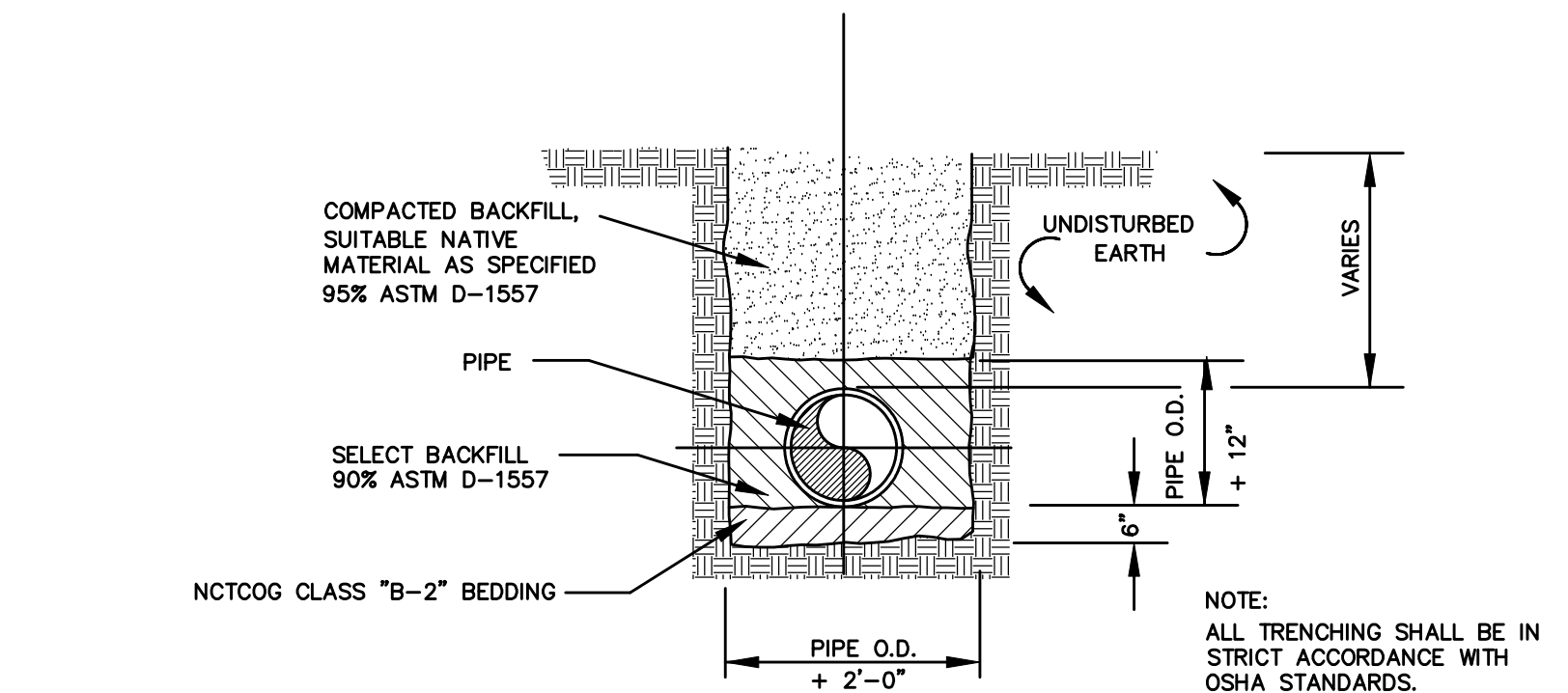
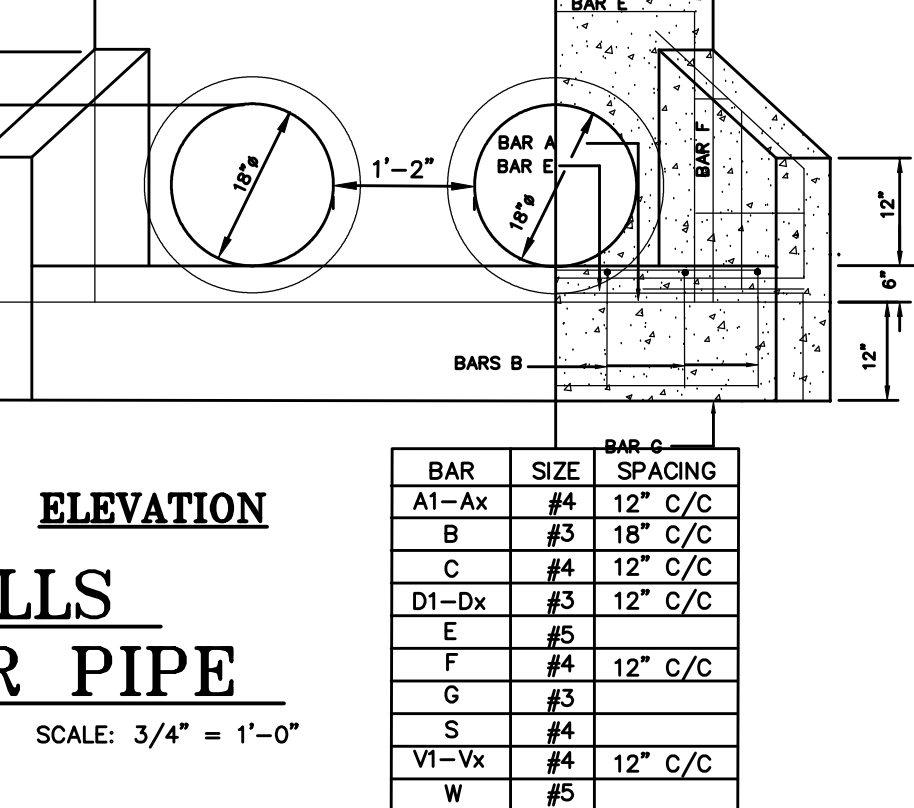
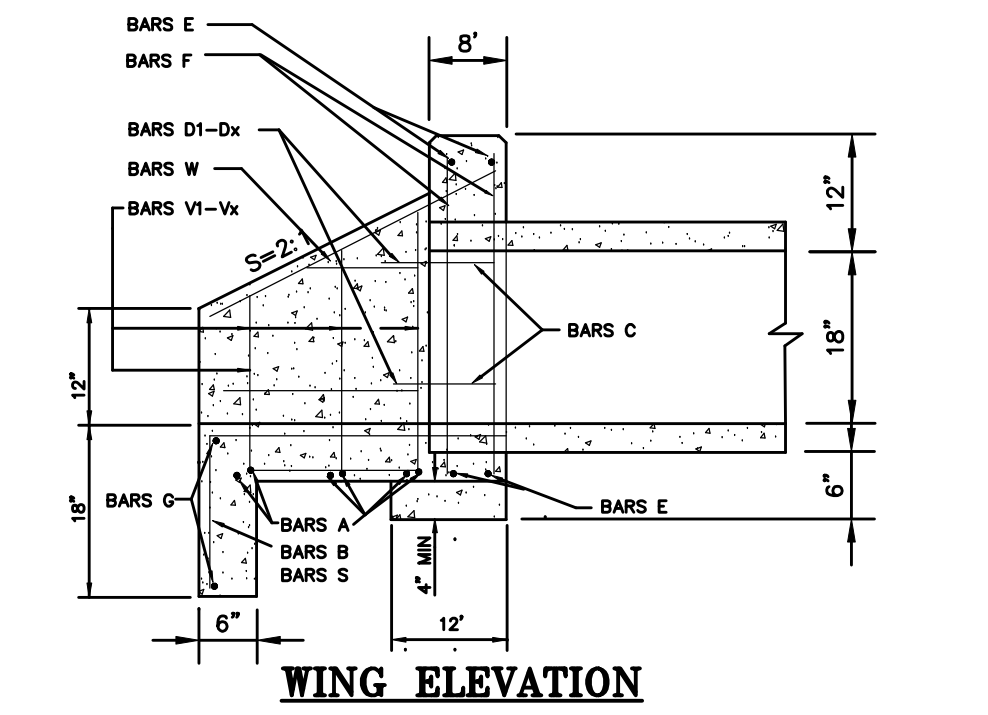
HANDICAPPED PARKING STALL DETAIL
SCALE: 1/8" = 1'



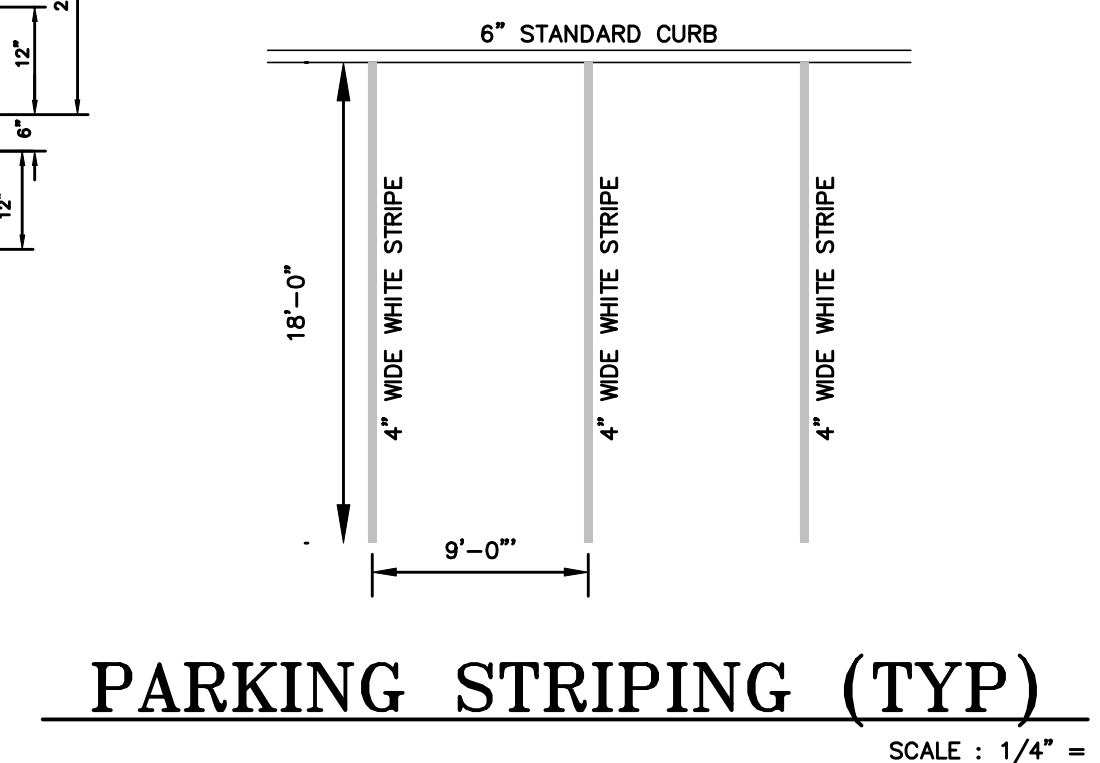
TYPICAL CONCRETE DRIVEWAY
SCALE: AS SHOWN



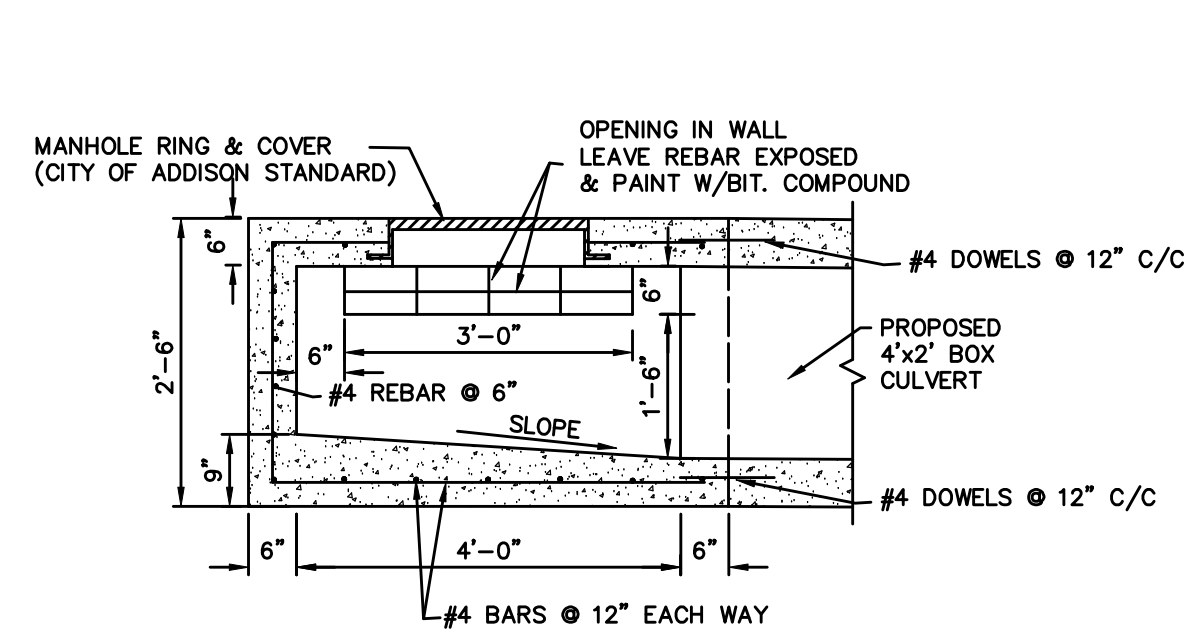
CONCRETE HEADWALLS FOR 2- 18" DIAMETER PIPE
SCALE: 3/4" = 1'-0"



TYPICAL TRENCH AND BACKFILL DETAIL
SCALE: NOT TO SCALE

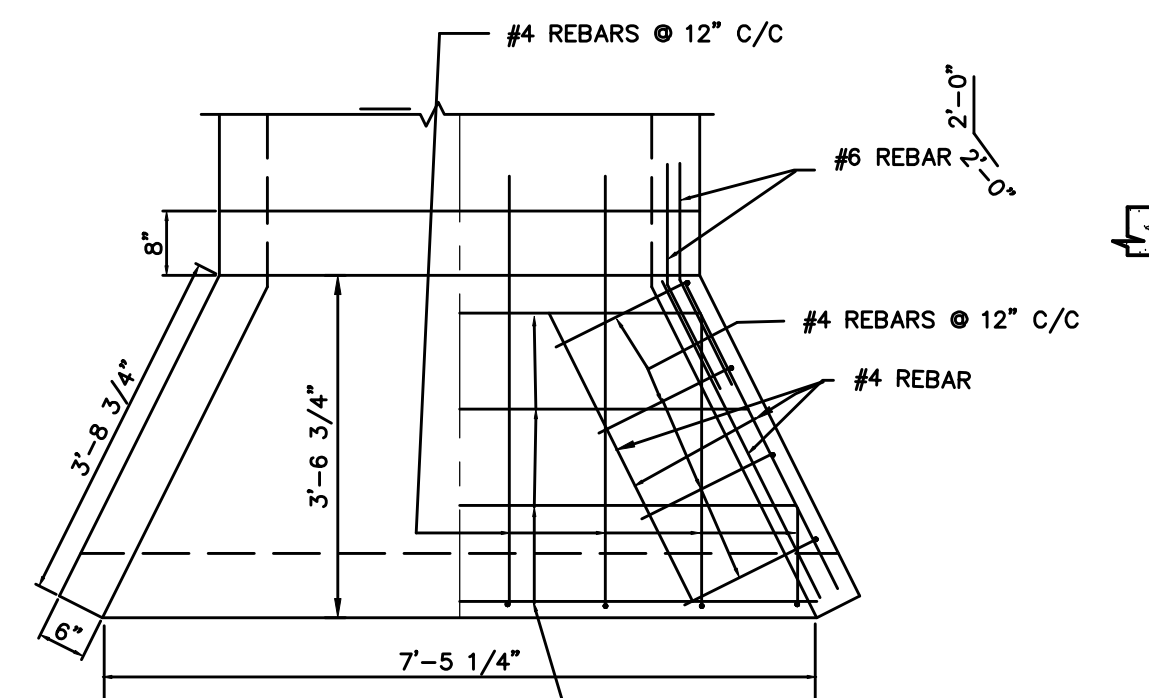


PARKING STRIPING (TYP)
SCALE: 1/4" = 1'



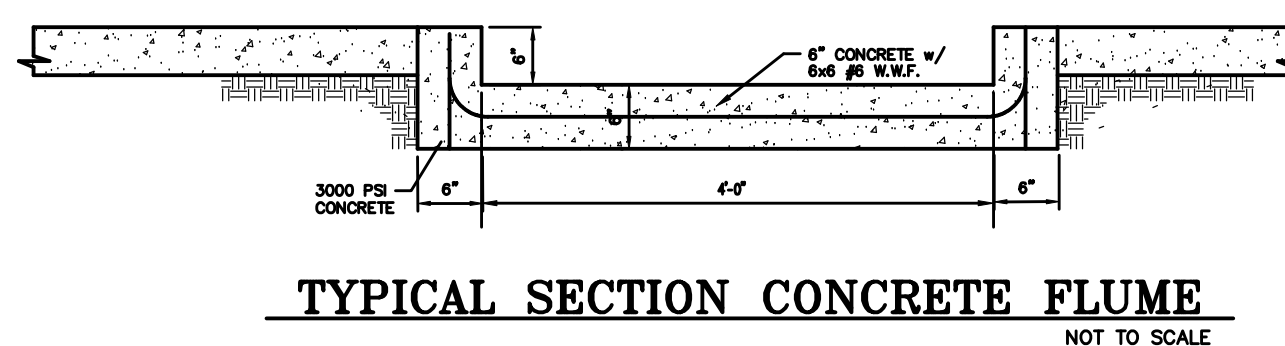
SECTION

PLAN PROPOSED BOX CURB INLET
SCALE: 1/2"=1'-0"

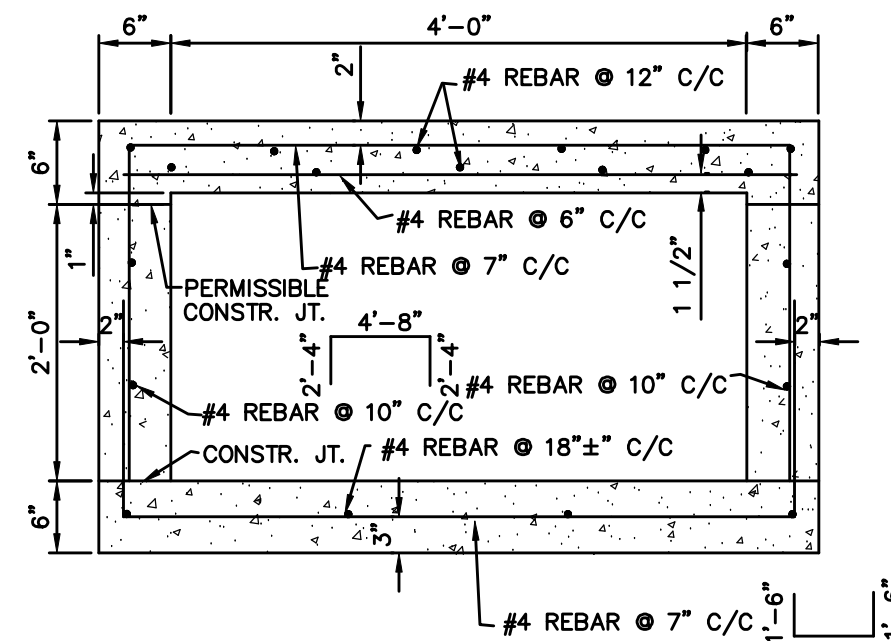


PLAN

SECTION PROPOSED WING WALL
SCALE: 1/2"=1'-0"

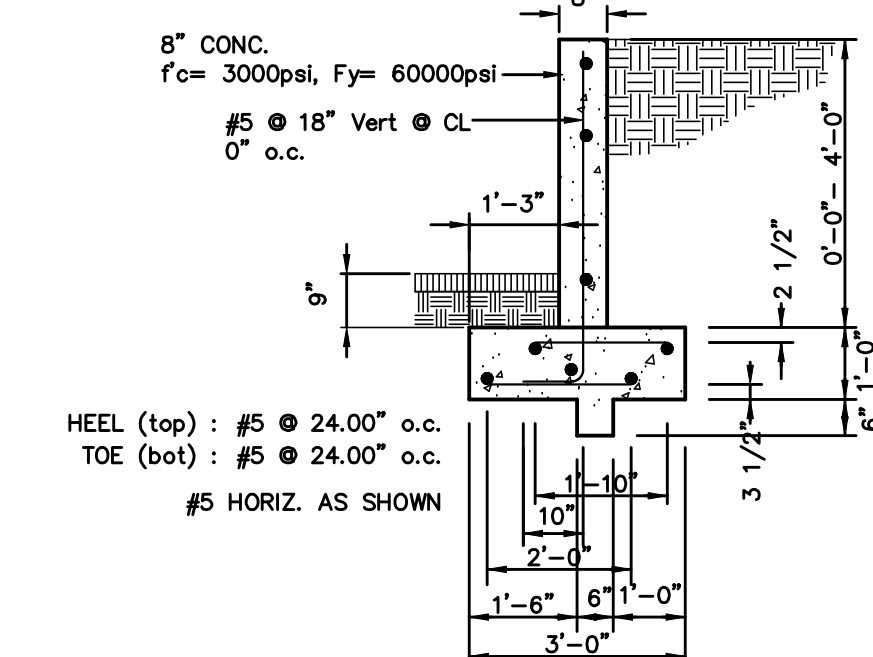


TYPICAL SECTION CONCRETE FLUME
NOT TO SCALE

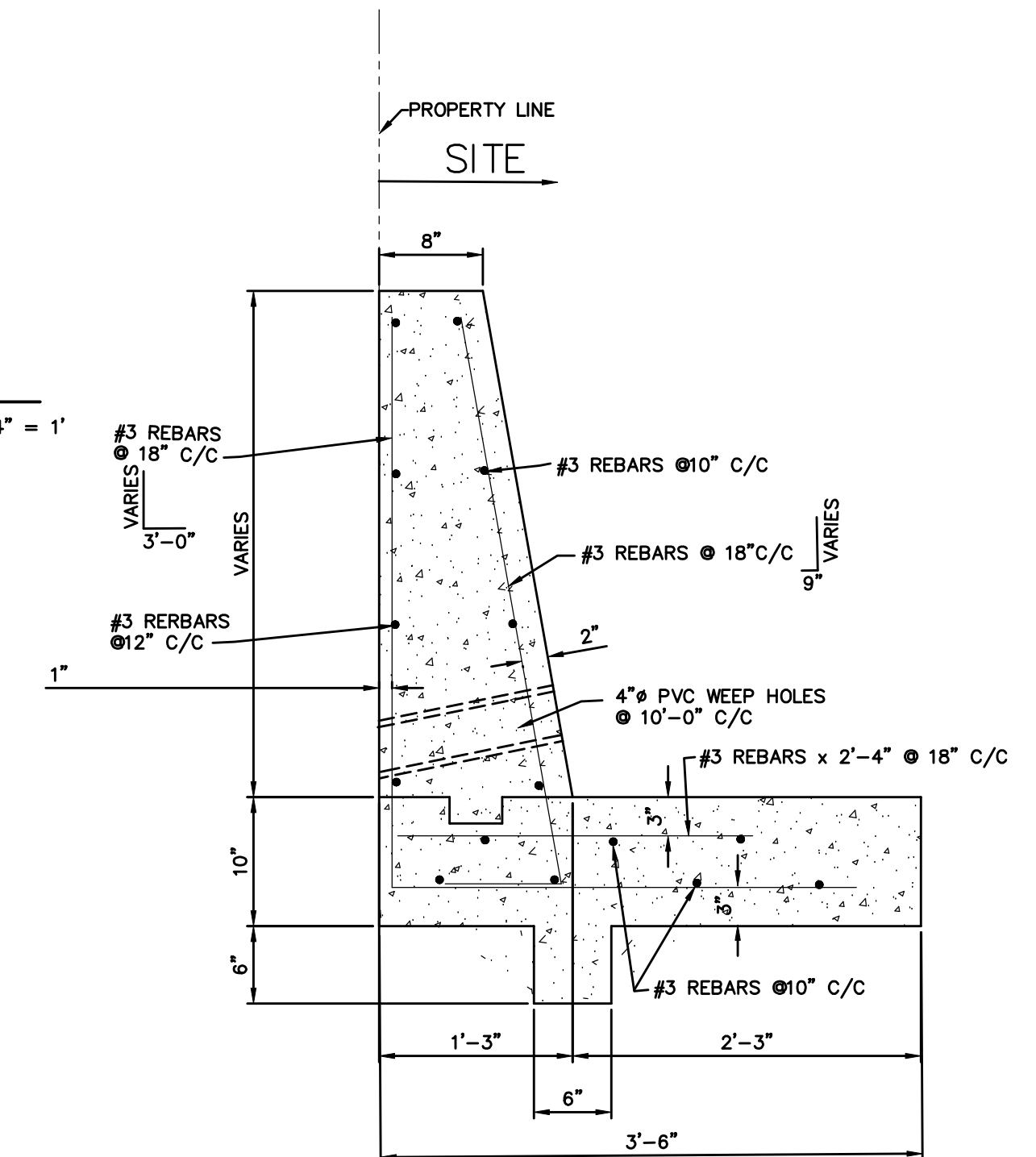


SECTION

PROPOSED BOX CULVERT
SCALE: 3/4"=1'-0"



CONCRETE RETAINING WALL @ RAMP
SCALE: 3/8" = 1'-0"



TYPICAL CONCRETE RETAINING WALL @ PROPERTY LINE
SCALE: 1"=1'-0"

AS BUILT
APRIL 30, 2010



DATE	REVISION DESCRIPTION
8/3/08	RHT
9/26/08	RHT
11/4/08	RHT
11/18/08	RHT
11/26/08	RHT

SITE DETAILS			
BEING A REPLAT WESTGROVE AND AIRBORN BEING A REPLAT OF BLOCK A, CARROLL ESTATES			
TOWN OF ADDISON	DALLAS COUNTY	TEXAS	
DATE: 6/16/08	SCALE: 1" = 30'	FILE NUMBER: 4221AIR	DATA FILE: FIELD BOOK:
k KISTENMACHER ENGINEERING COMPANY, INC.	LAND PLANNING	SURVEYING	DRAWN BY: RHT
CONSULTING ENGINEERING	1420 GERONIMO DRIVE, SUITE A2 • EL PASO, TEXAS 79925 • 915-778-4475	CHECKED BY: GGG	SHEET 11 OF 14

REVISED: 12/23/08