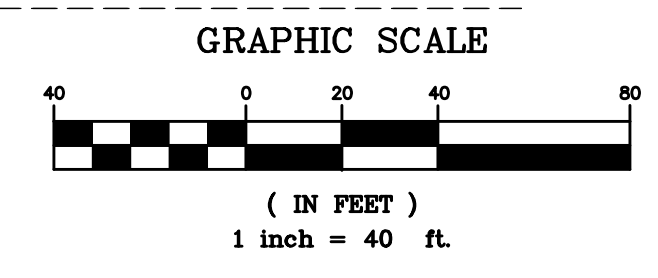
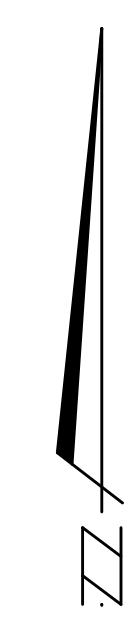
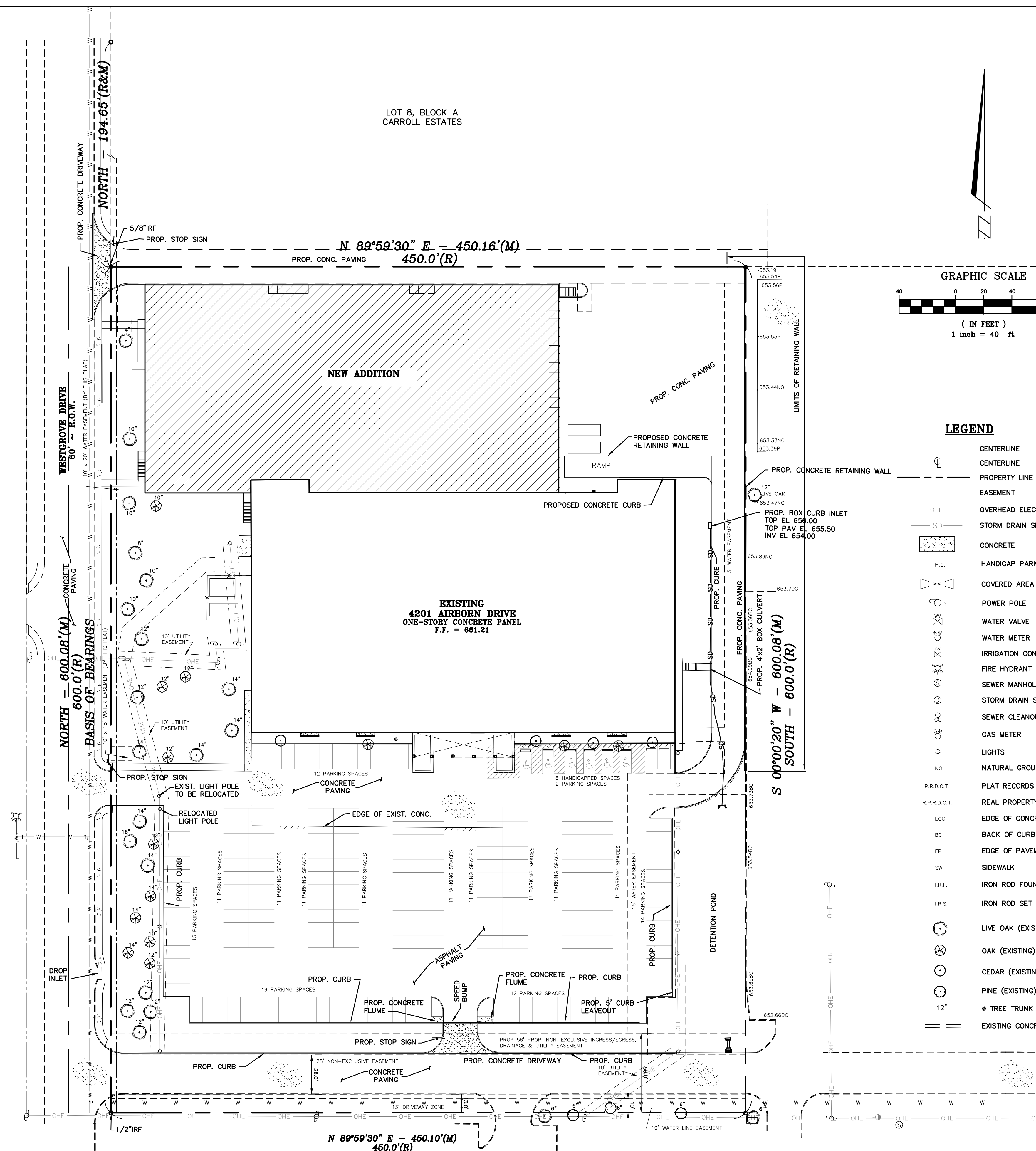


LOT 8, BLOCK A
CARROLL ESTATES



LEGEND

- CENTERLINE
- - - CENTERLINE
- - - PROPERTY LINE
- - - EASEMENT
- OVERHEAD ELECTRIC LINES
- STORM DRAIN SEWER
- CONCRETE
- H.C. HANDICAP PARKING
- COVERED AREA
- POWER POLE
- WATER VALVE
- WATER METER
- IRRIGATION CONTROL VALVE
- FIRE HYDRANT
- SEWER MANHOLE
- STORM DRAIN SEWER MANHOLE
- SEWER CLEANOUT
- GAS METER
- LIGHTS
- NG NATURAL GROUND
- P.R.D.C.T. PLAT RECORDS OF DALLAS COUNTY, TEXAS
- R.P.R.D.C.T. REAL PROPERTY RECORDS OF DALLAS COUNTY, TEXAS
- EOC EDGE OF CONCRETE
- BC BACK OF CURB
- EP EDGE OF PAVEMENT
- SW SIDEWALK
- I.R.F. IRON ROD FOUND
- I.R.S. IRON ROD SET
- LIVE OAK (EXISTING)
- OAK (EXISTING)
- CEDAR (EXISTING)
- PINE (EXISTING)
- φ TREE TRUNK
- EXISTING CONCRETE CURB

PARKING NOTE

PARKING SPACES	173
HANDICAPPED SPACES	6
TOTAL	179

SURVEY CONTROL

CONTROL MONUMENT FOUND #COA-13
630' WEST FROM INTERSECTION OF
ADDISON ROAD & WESTGROVE DRIVE
THEN 15.7' SOUTH FROM BACK OF CURB,
5' FROM STREET SIGN & 8' SOUTH TO BACK
OF CURB OF WEST GROVE ROAD
US SURVEY FEET
NAVD 88 ELEVATION 642.09
MONUMENT: 2" BRASS DISK STAMPED "TXDOT
COA-13 GPS" STATE PLANE COORDINATES
NORTHING: 7042028.880
EASTING: 247920.516
DALLAS COUNTY SCALE FACTOR: 1.000136506
ELEVATIONS ARE NAVD 88 BASED UPON
TXDOT VRS NETWORK

ACCESSIBLE PEDESTRIAN ROUTES ON PUBLIC RIGHTS-OF-WAY AND PRIVATE PROPERTY SHALL COMPLY WITH AMERICANS WITH DISABILITIES ACT ACCESSIBILITY GUIDELINES (ADAAG) AND TEXAS ACCESSIBILITY STANDARDS (TAS). DESIGN AND CONSTRUCTION OF ALL CURB RAMPS ON PUBLIC RIGHTS-OF-WAY SHALL BE IN ACCORDANCE WITH TEXAS DEPARTMENT OF TRANSPORTATION STANDARD DETAIL PED-05, SHEETS 1 THROUGH 4.

AS BUILT
APRIL 30, 2010

REV:10/4/10



DATE	REVISION DESCRIPTION
1-2-08	TOPO ADDED
4-14-08	PARKING ADDED
6-16-08	DIMENSIONS
7-3-08	EASEMENTS
8-3-08	MISCELLANEOUS

SITE PLAN
REPLAT WESTGROVE AND AIRBORN
BEING A REPLAT OF BLOCK A, CARROLL ESTATES

TOWN OF ADDISON DALLAS COUNTY TEXAS

DATE: 1-9-08	SCALE: 1" = 40'	FILE NUMBER: 4221AIR	DATA FILE:
DRAWN BY: MGB	CHECKED BY: GGG	FIELD BOOK:	SHEET 3 OF 14

REVISED: 4/17/09 MISCELLANEOUS
REVISED: 2/25/09 MISCELLANEOUS
REVISED: 12/23/08 MISCELLANEOUS
REVISED: 11/26/08 MISCELLANEOUS
REVISED: 11/18/08 MISCELLANEOUS
REVISED: 9/26/08 MISCELLANEOUS