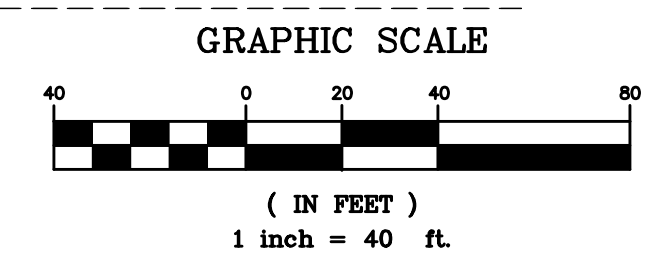
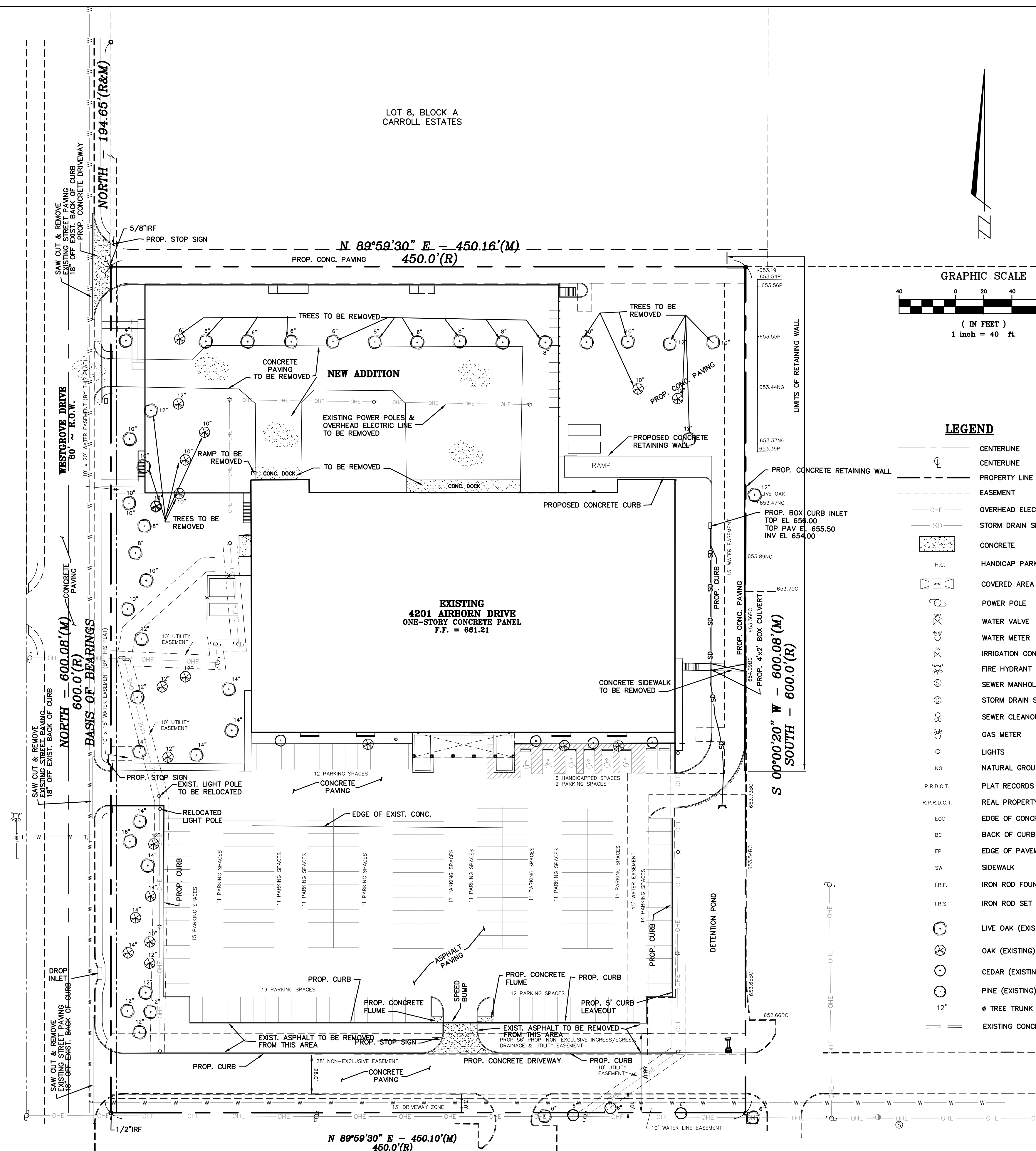


LOT 8, BLOCK A
CARROLL ESTATES



LEGEND

- CENTERLINE
- - - CENTERLINE
- - - PROPERTY LINE
- - - EASEMENT
- OHE — OVERHEAD ELECTRIC LINES
- SD — STORM DRAIN SEWER
- CONCRETE
- H.C. HANDICAP PARKING
- COVERED AREA
- POWER POLE
- WATER VALVE
- WATER METER
- IRRIGATION CONTROL VALVE
- FIRE HYDRANT
- SEWER MANHOLE
- STORM DRAIN SEWER MANHOLE
- SEWER CLEANOUT
- GAS METER
- LIGHTS
- NG NATURAL GROUND
- P.R.D.C.T. PLAT RECORDS OF DALLAS COUNTY, TEXAS
- R.P.R.D.C.T. REAL PROPERTY RECORDS OF DALLAS COUNTY, TEXAS
- EOC EDGE OF CONCRETE
- BC BACK OF CURB
- EP EDGE OF PAVEMENT
- SW SIDEWALK
- I.R.F. IRON ROD FOUND
- I.R.S. IRON ROD SET
- LIVE OAK (EXISTING)
- OAK (EXISTING)
- CEDAR (EXISTING)
- PINE (EXISTING)
- TREE TRUNK
- == EXISTING CONCRETE CURB

SURVEY CONTROL

CONTROL MONUMENT #COA-13
630' WEST FROM INTERSECTION OF
ADDISON ROAD & WESTGROVE DRIVE
THEN 15.7' SOUTH FROM BACK OF CURB,
5' FROM STREET SIGN & 8' SOUTH TO BACK
OF CURB OF WEST GROVE ROAD
US SURVEY FEET
NAVD 88 ELEVATION 642.09
MONUMENT: 2" BRASS DISK STAMPED "TXDOT
COA-13 GPS" STATE PLANE COORDINATES
NORTHING: 7042028.880
EASTING: 2479820.516
DALLAS COUNTY SCALE FACTOR: 1.000136506
ELEVATIONS ARE NAVD 88 BASED UPON
TXDOT VRS NETWORK

AS BUILT
APRIL 30, 2010

REV:10/4/10



DATE:	REVISION DESCRIPTION
7-3-08	EASEMENTS
8-3-08	MISCELLANEOUS
9-26-08	MISCELLANEOUS
11-26-08	MISCELLANEOUS
12-23-08	MISCELLANEOUS

DEMOLITION PLAN
REPLAT WESTGROVE AND AIRBORN
BEING A REPLAT OF BLOCK A, CARROLL ESTATES

TOWN OF ADDISON DALLAS COUNTY TEXAS

DATE: 6/16/08	SCALE: 1" = 40'	FILE NUMBER: 4221AIR	DATA FILE:
DRAWN BY: MGB	CHECKED BY: GCK	SHEET 4	OF 14

REVISED: 4/17/09 MISCELLANEOUS
REVISED: 2/25/09 MISCELLANEOUS