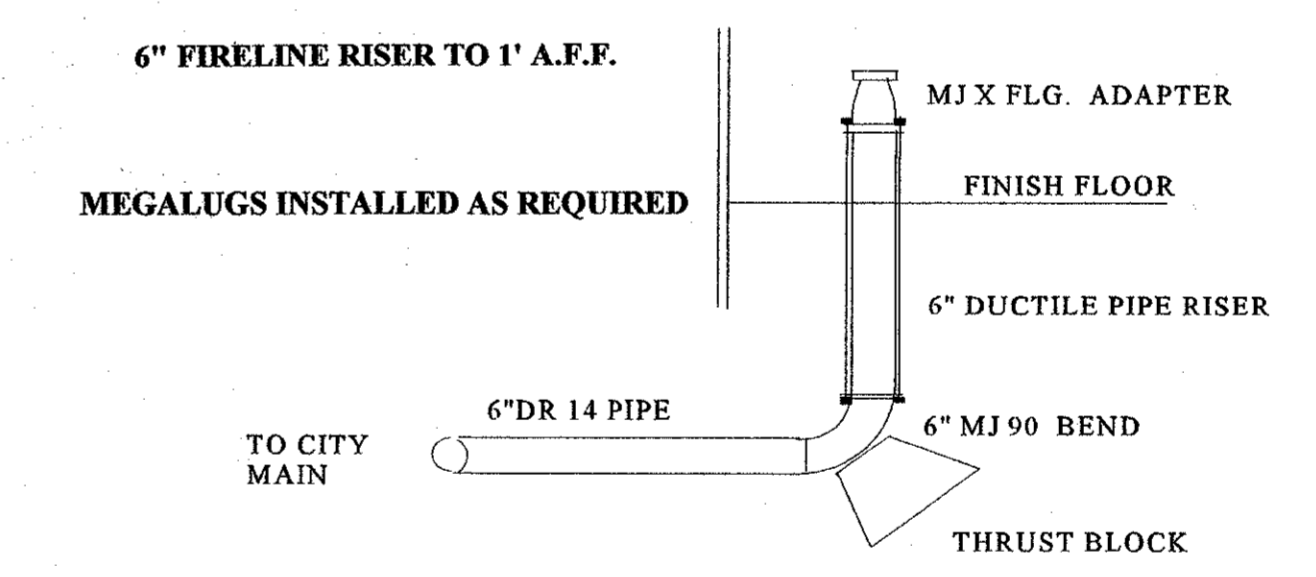


UNDERGROUND FIRE LINE GENERAL NOTES

1. ALL UNDERGROUND MATERIALS AND INSTALLATION TO CONFORM TO N.F.P.A. #24 AND THE TOWN OF ADDISON.
2. ALL PIPE SHALL BE C-900 DR 14 PVC, FIRE RISER INTO BUILDING SHALL BE DUCTILE IRON PIPE, ALL EXPOSED NUTS, BOLTS AND PIPE SHALL BE TAR COATED, POLY WRAP FITTINGS AND DUCTILE PIPE.
3. EMBEDMENT, TRENCH BACKFILL AND CONCRETE THRUST BLOCKS SHALL CONFORM TO N.F.P.A. #24, THE TOWN OF ADDISON AND NTCOG SPECIFICATIONS.
4. ALL NEW UNDERGROUND PIPING TO BE HYDROSTATICALLY TESTED AT 200 PSIG FOR A MINIMUM OF 2 HOURS.
5. ALL NEW UNDERGROUND TO BE FLUSHED IN ACCORDANCE WITH N.F.P.A. #24.
6. ALL PIPING SHALL BE U.L. LISTED FOR FIRE PROTECTION.



Riser detail

1 SITE PLAN
 SCALE: 1/16" = 1'-0"

CONSTRUCTION SET
 ISSUED BY
 TOWN OF ADDISON
 PUBLIC WORKS DEPARTMENT
 NAME: *Ken Chubb* DATE: 11/14/02

SOUTHERN SCR-0372 MECHANICAL PLUMBING INC 400 SOUTH ASTON SUNNYVALE, TEXAS 75182 972-226-2460 FAX 972-226-2480		F1
TITLE: UNDERGROUND FIRE LINE		
RME # 0454 HERBERT G WEINSTEIN <i>Herbert G Weinstein</i>		
PROJECT: START INTERNATIONAL 4720 AIRBORN DRIVE ADDISON, TEXAS 75001 LOT 3R, BLOCK A SOJOURN PLAZA ADDITION DALLAS COUNTY		
REVISIONS		
DATE: November 13, 2002	BY: EWS	JOB # 795
BUILDING PERMIT # 5924		

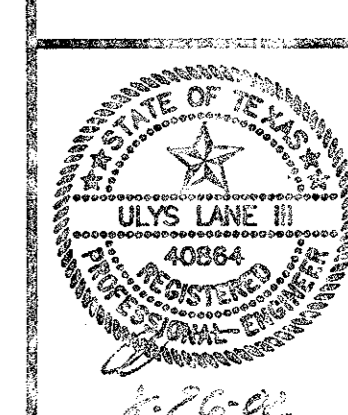
Start International
 Airborn Drive
 Addison, Texas

11-29

PREPARED BY:
WIA WIER & ASSOCIATES, INC.
 ENGINEERS, SURVEYORS, LAND PLANNERS &
 430 WEST RICE STREET, SUITE 1700, HOUSTON, TEXAS 77056 (713) 791-7700
 (713) 791-7700 FAX (713) 791-7700

START INTERNATIONAL
 SOJOURN PLAZA
 ADDITION
 LOT 3R, BLOCK A

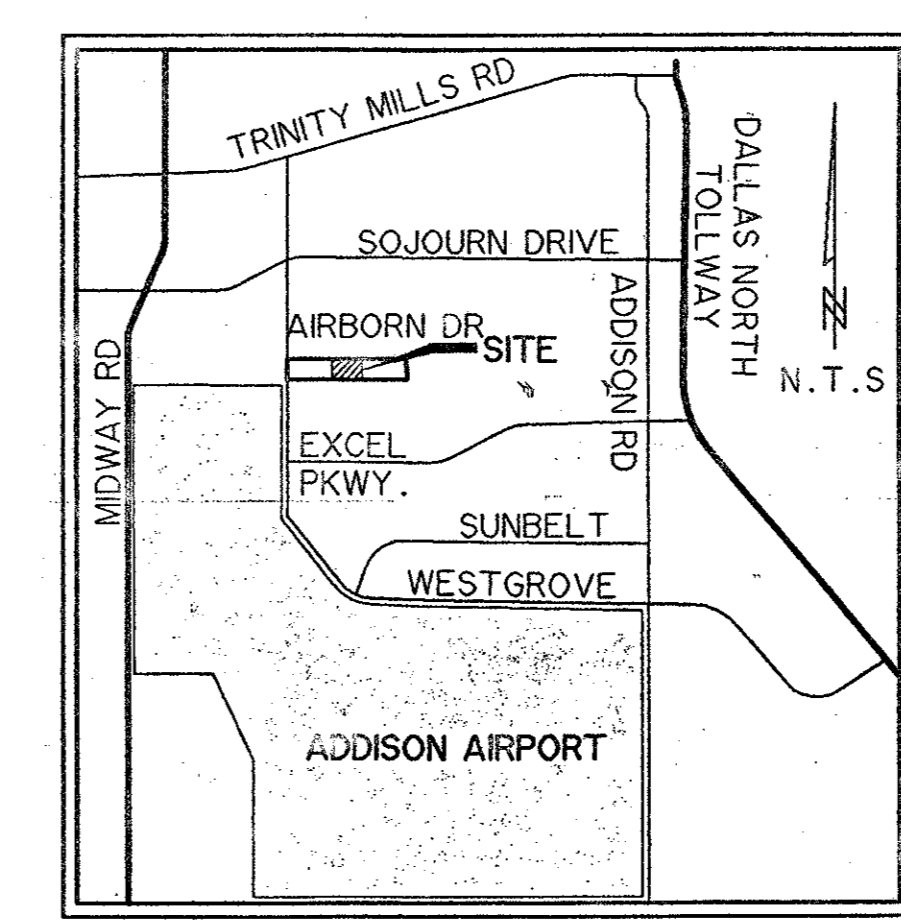
DRAINAGE AREA
 MAP



SHEET NO.
 4

4720 AIRBORN Const-Set.

11-29



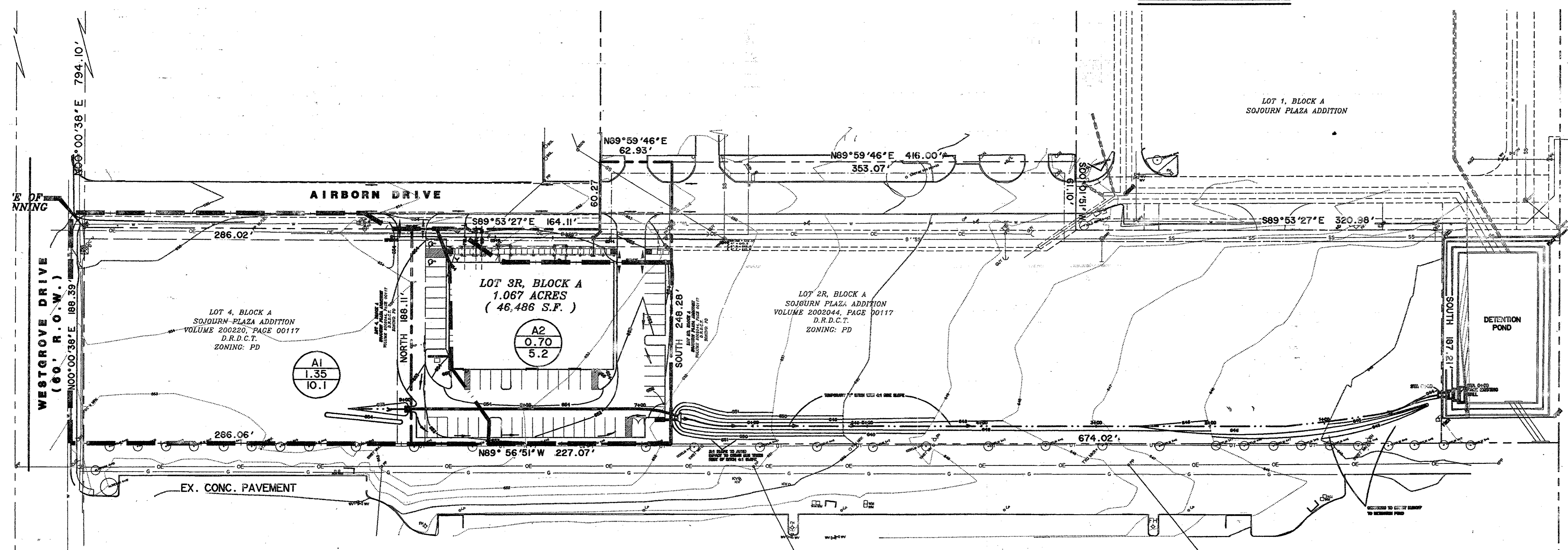
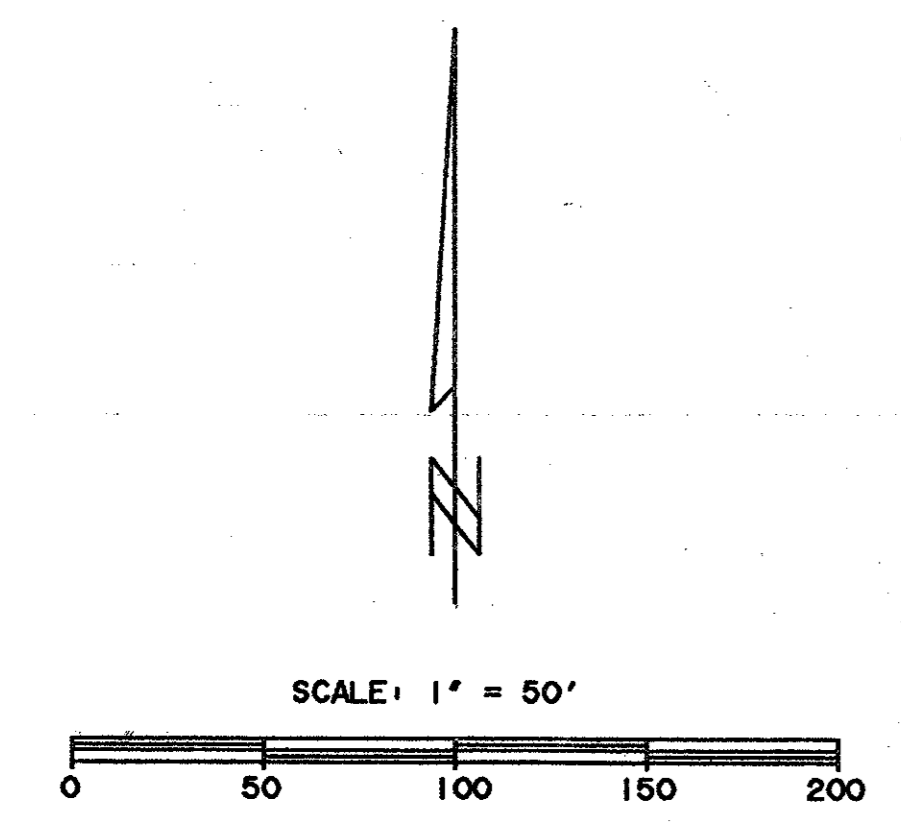
VICINITY MAP

LEGEND	
	PROPOSED INLET
	PROPOSED CONTOUR
	EX. CONTOUR LINE
	DRAINAGE AREA DIVIDE
	DRAINAGE AREA SUBDIVIDE
	DRAINAGE AREA DESIGNATION
	AREA IN ACRES
	100 YR. FLOW (C.F.S.)

CAUTION !!!
UNDERGROUND UTILITIES

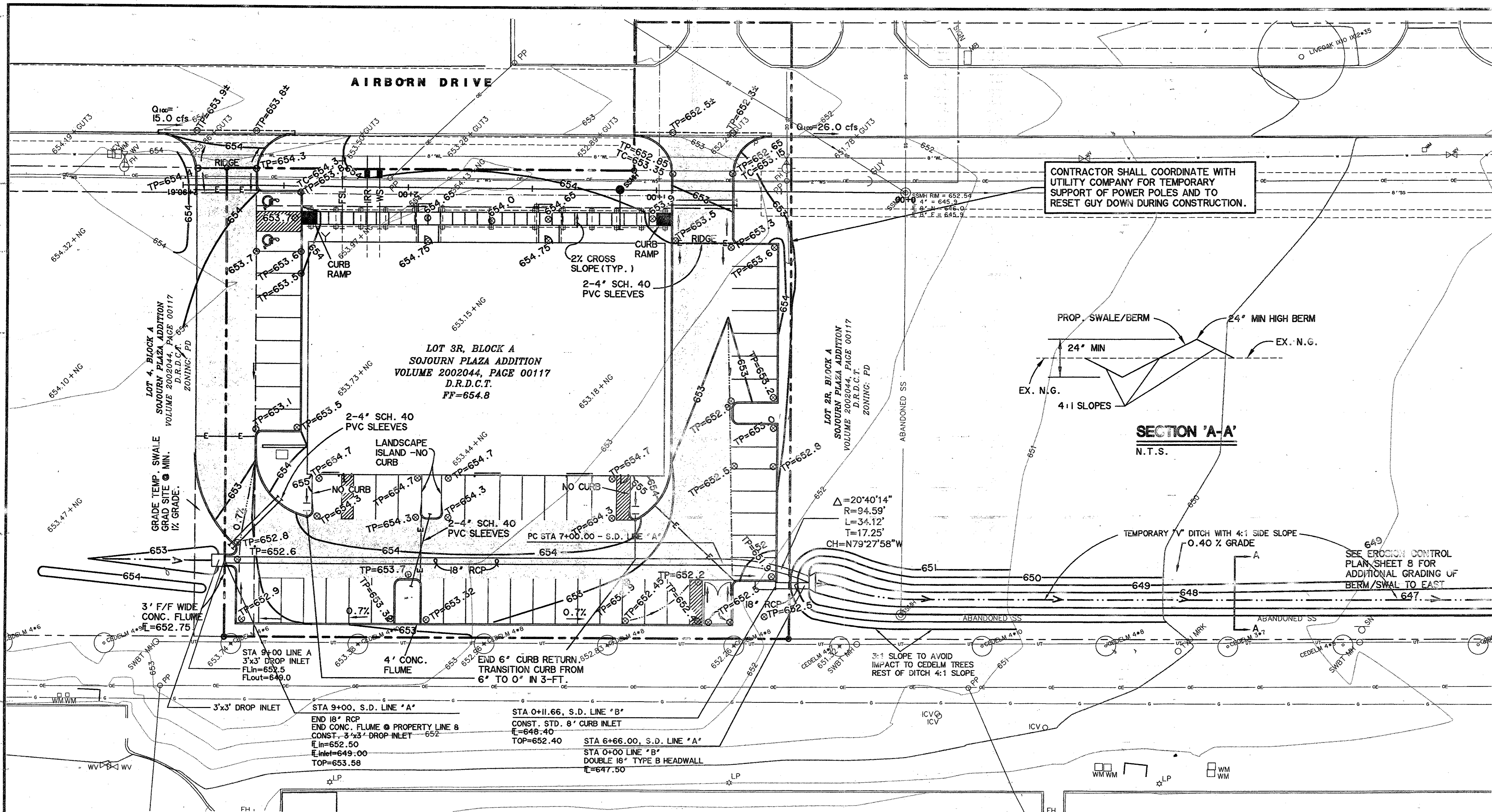
EXISTING UTILITIES AND UNDERGROUND FACILITIES INDICATED ON THESE PLANS HAVE BEEN LOCATED FROM REFERENCE INFORMATION SUPPLIED BY VARIOUS OWNERS OF THE FACILITIES. THE ENGINEER DOES NOT ACCEPT THE RESPONSIBILITY FOR THE UTILITY LOCATIONS SHOWN, IT SHALL BE THE RESPONSIBILITY OF THE CONTRACTOR TO VERIFY BOTH HORIZONTALLY AND VERTICALLY THE LOCATION OF ALL EXISTING UTILITIES AND UNDERGROUND FACILITIES PRIOR TO CONSTRUCTION, TO TAKE NECESSARY PRECAUTIONS IN ORDER TO PROTECT ALL FACILITIES ENCOUNTERED, AND TO NOTIFY THE ENGINEER PROMPTLY OF ALL CONFLICTS OF THE WORK WITH EXISTING FACILITIES. THE CONTRACTOR SHALL PRESERVE AND PROTECT ALL EXISTING UTILITIES FROM DAMAGE DURING CONSTRUCTION. ANY DAMAGE BY THE CONTRACTOR TO EXISTING UTILITIES SHALL BE REPAIRED BY THE CONTRACTOR AT HIS EXPENSE. CONTACT ALL POSSIBLE UTILITY AND UNDERGROUND FACILITY OWNERS.

- * BENCH MARKS*
- R.R. SPIKE SOUTH SIDE 2ND P.P. NORTH SIDE AIRBORN DR. EAST OF INT. OF AIRBORN BORN AND WESTGROVE. ELEV. 655.28
 - *X* CUT NORTHWEST CORNER *Y* INLET JUST SOUTHEAST OF THE SOUTHEAST CORNER OF LOT 2, BLOCK A. ELEV. 642.21

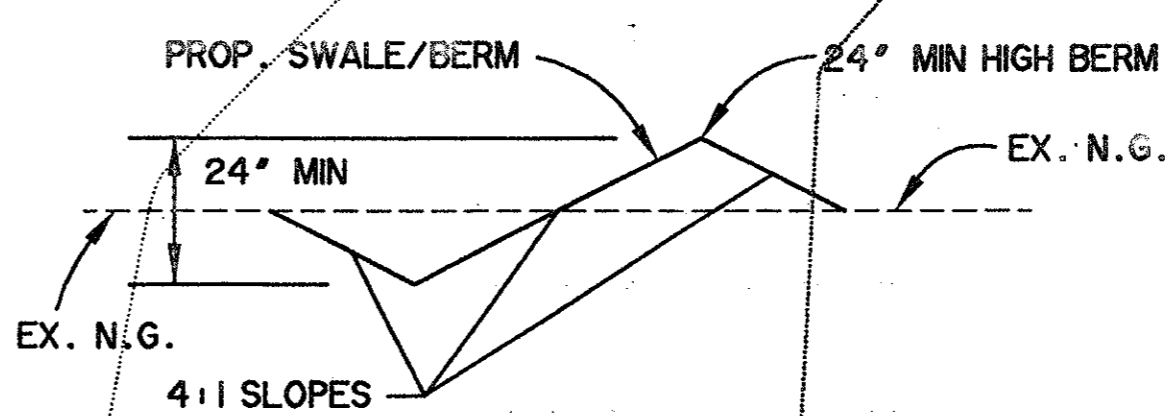


DESIGN POINT	DESIGNATION AREA	TOTAL AREA (ACRES)	INCREMENTAL AREAS		TOTAL CA	TC	I ₁₀₀	Q ₁₀₀	COMMENTS
			COMMERCIAL C=0.85	UNDEVELOPED C=0.40					
	A1	1.35	1.35		1.15	10	8.74	10.1	3' DROP INLET
	A2	0.70	0.70		0.60	10	8.74	5.2	6' CURB INLET

TIME 16:20 FILE: DAMAP.Dwg



CONTRACTOR SHALL COORDINATE WITH UTILITY COMPANY FOR TEMPORARY SUPPORT OF POWER POLES AND TO RESET GUY DOWN DURING CONSTRUCTION.

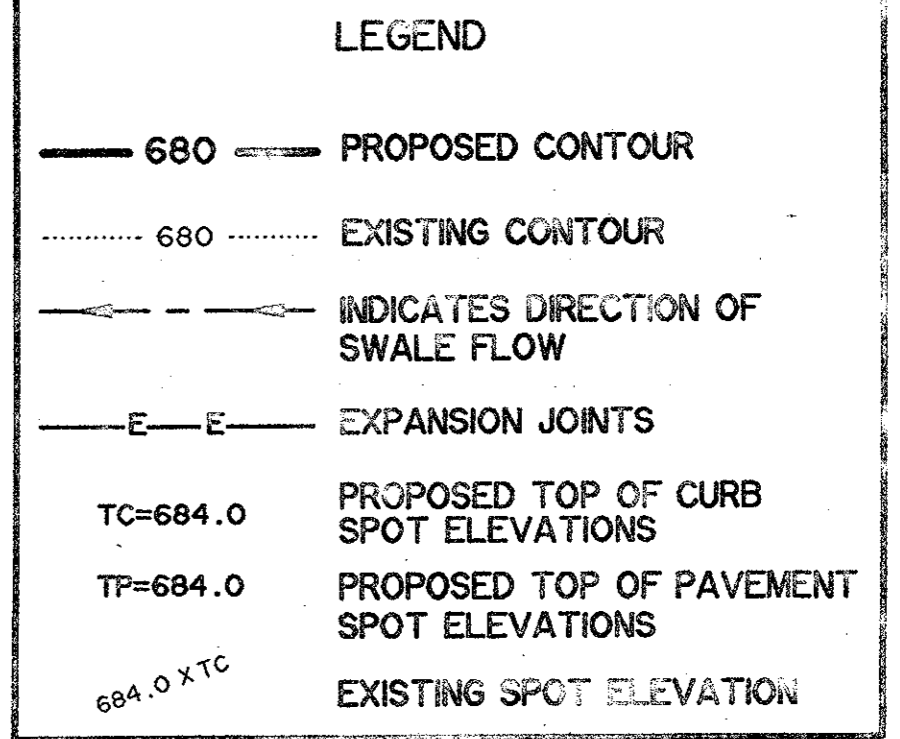
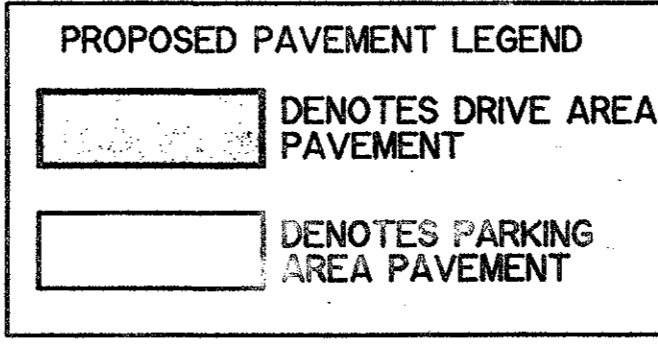


SECTION 'A-A'
N.T.S.

CAUTION !!!
UNDERGROUND UTILITIES

EXISTING UTILITIES AND UNDERGROUND FACILITIES INDICATED ON THESE PLANS HAVE BEEN LOCATED FROM REFERENCE INFORMATION SUPPLIED BY VARIOUS OWNERS OF THE FACILITIES. THE ENGINEER DOES NOT ACCEPT THE RESPONSIBILITY FOR THE UTILITY LOCATIONS SHOWN, IT SHALL BE THE RESPONSIBILITY OF THE CONTRACTOR TO VERIFY BOTH HORIZONTALLY AND VERTICALLY THE LOCATION OF ALL EXISTING UTILITIES AND UNDERGROUND FACILITIES PRIOR TO CONSTRUCTION, TO TAKE NECESSARY PRECAUTIONS IN ORDER TO PROTECT ALL FACILITIES ENCOUNTERED, AND TO NOTIFY THE ENGINEER PROMPTLY OF ALL CONFLICTS OF THE WORK WITH EXISTING FACILITIES. THE CONTRACTOR SHALL PRESERVE AND PROTECT ALL EXISTING UTILITIES FROM DAMAGE DURING CONSTRUCTION. ANY DAMAGE BY THE CONTRACTOR TO EXISTING UTILITIES SHALL BE REPAIRED BY THE CONTRACTOR AT HIS EXPENSE. CONTACT ALL POSSIBLE UTILITY AND UNDERGROUND FACILITY OWNERS.

- * BENCH MARKS ***
- R.R. SPIKE SOUTH SIDE 2ND P.P. NORTH SIDE AIR BORN DR. EAST OF INT. OF AIRBORN BORN AND WESTGROVE.
ELEV. 655.28
 - "X" CUT NORTHWEST CORNER "Y" INLET JUST SOUTHEAST OF THE SOUTHEAST CORNER OF LOT 2, BLOCK A.
ELEV. 642.21



* SEE GRADING & DRAINAGE NOTES SHEET 6 FOR FOUNDATION CONSTRUCTION NOTES.
* SEE DRAINAGE AREA MAP SHEET 4 FOR DRAINAGE CALCULATIONS.
SEE EROSION CONTROL SHEETS FOR EROSION CONTROL NOTES AND DEVICES.

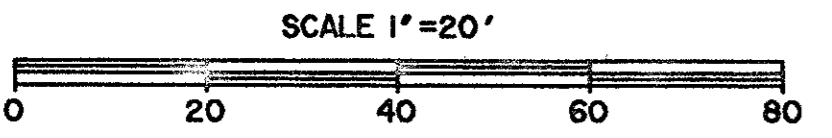
PREPARED BY:
VIA WIER & ASSOCIATES, INC.
ENGINEERS SURVEYORS LAND PLANNERS
4300 BELTWAY PL. SUITE 130 ARLINGTON, TEXAS 76010 METRO (817) 467-7700
8721 30th STREET FRISSCO, TEXAS METRO (414) 937-8100
www.via-wier.com

START INTERNATIONAL
SOJOURN PLAZA ADDITION
LOT 3R, BLOCK A

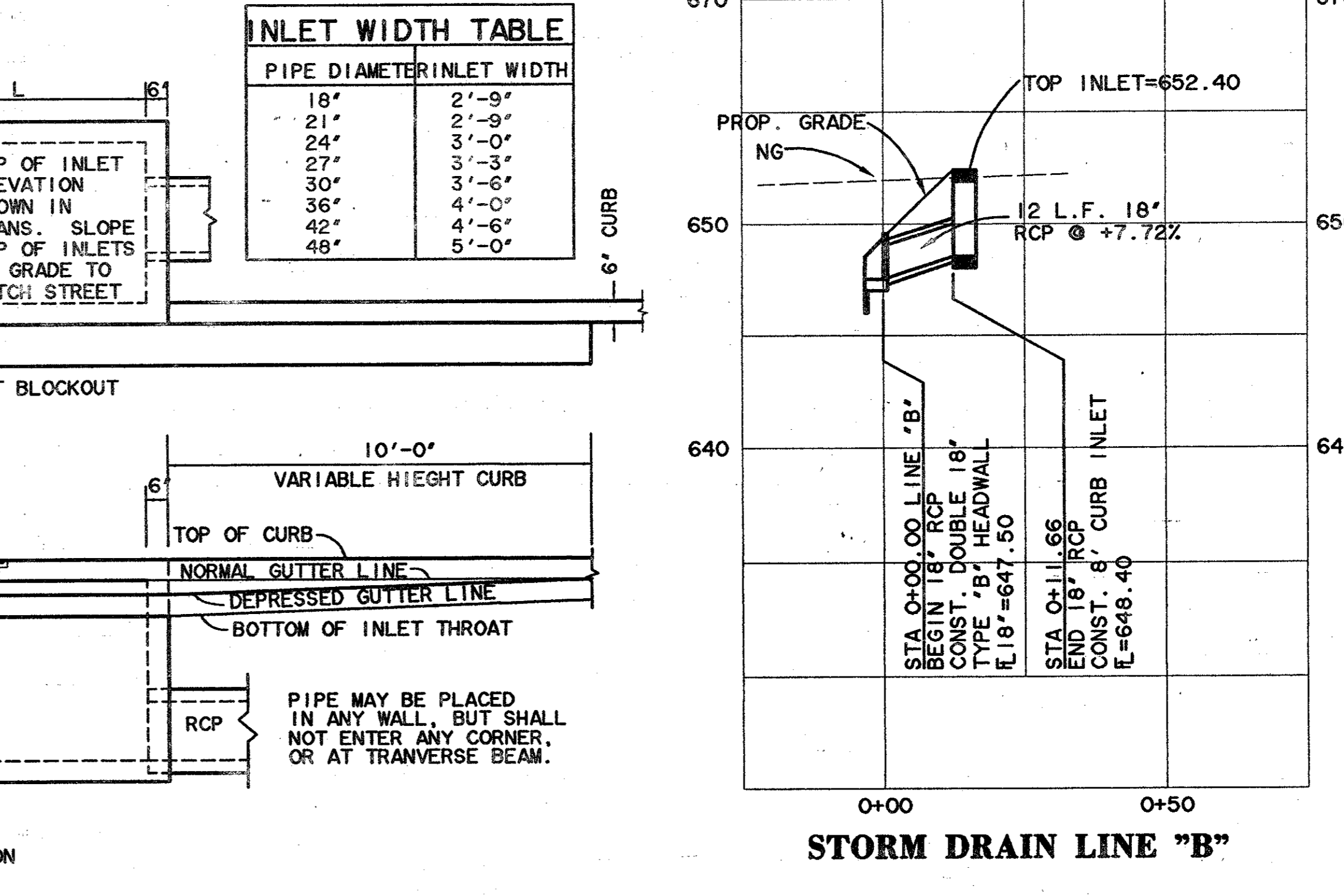
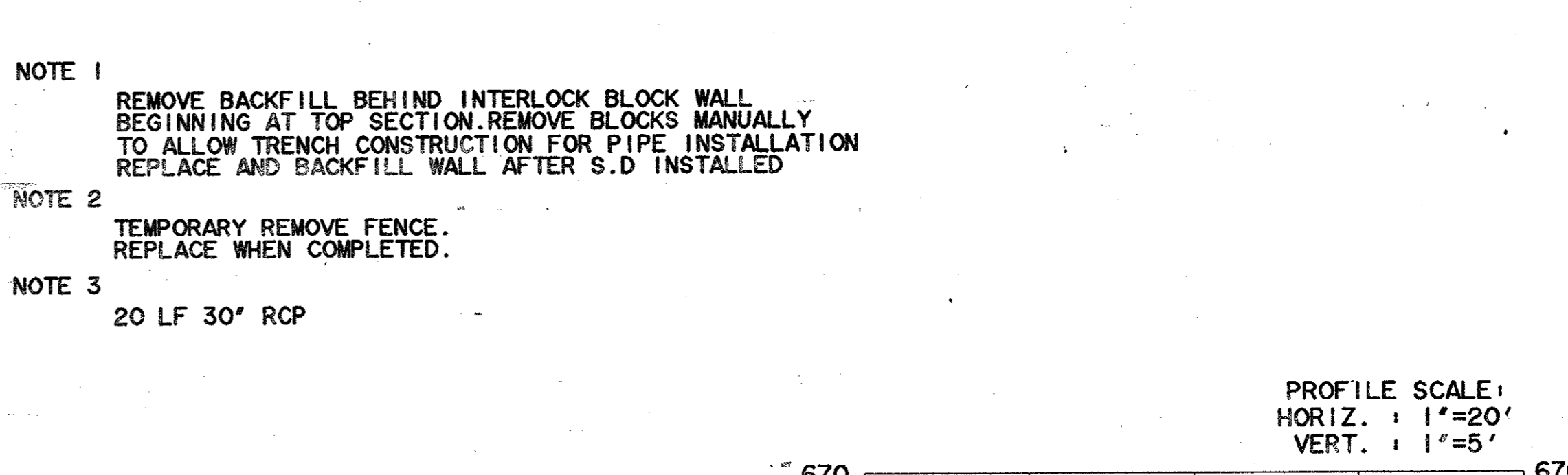
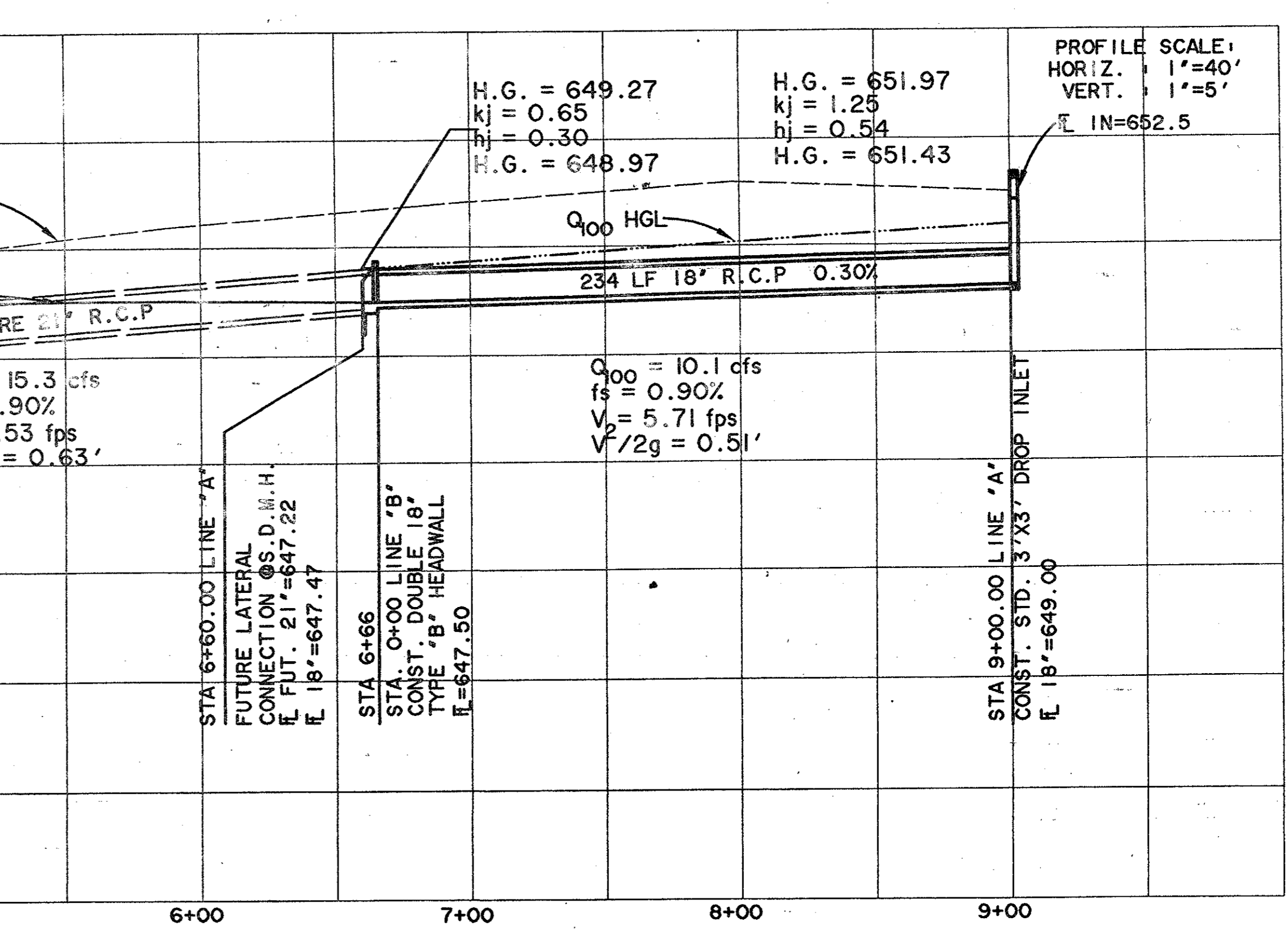
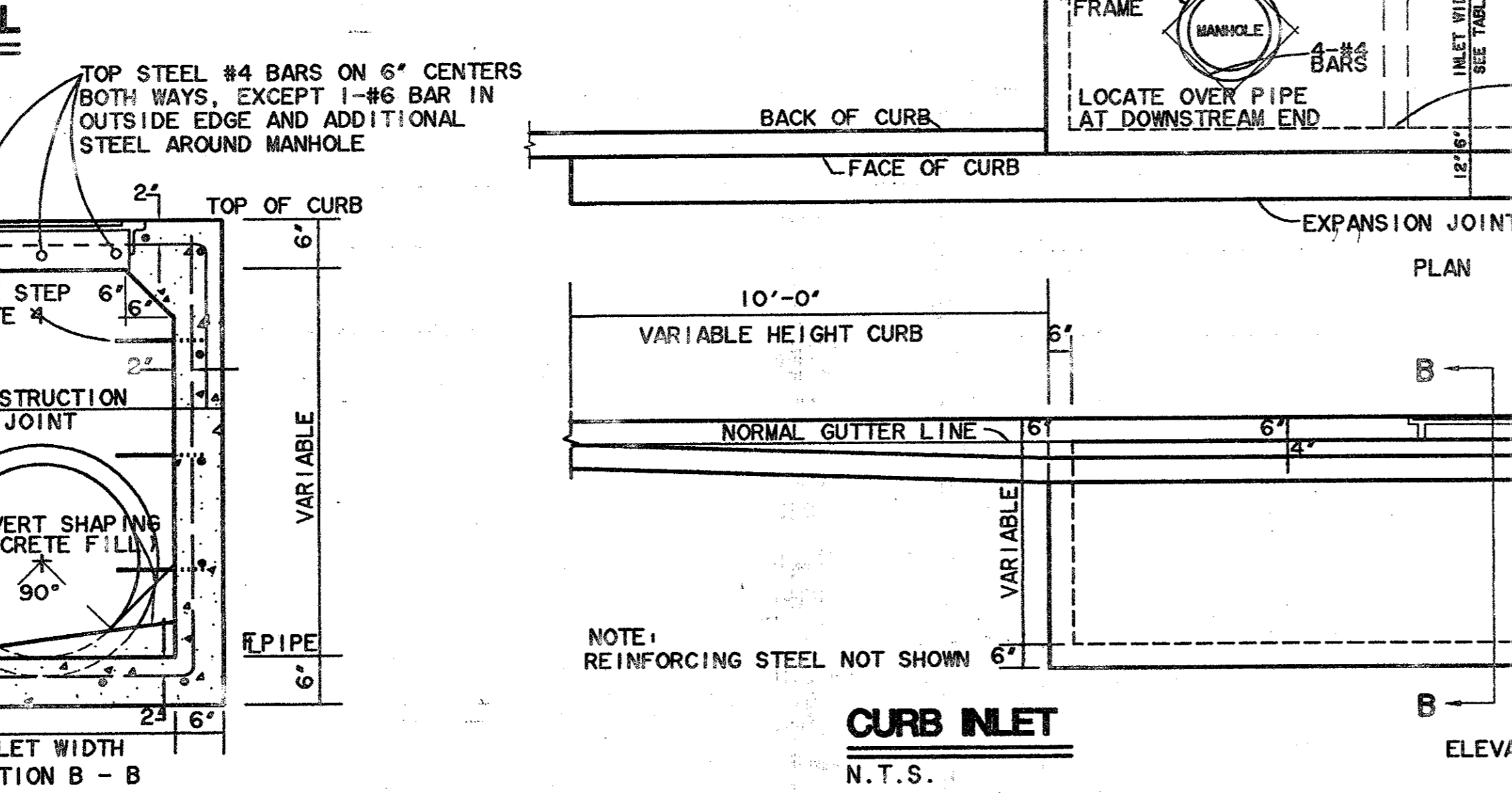
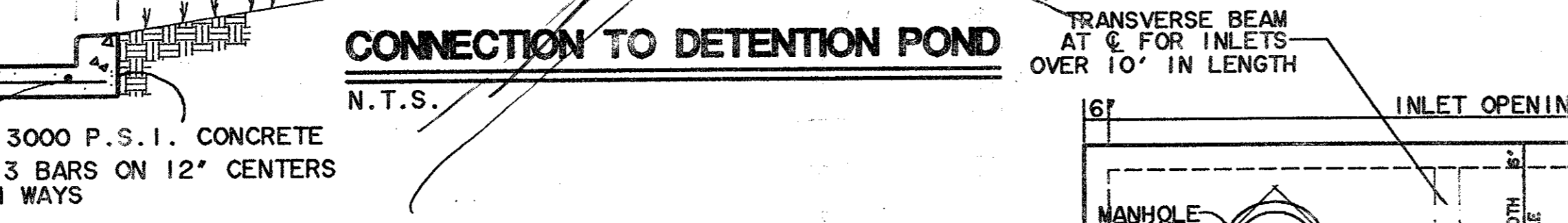
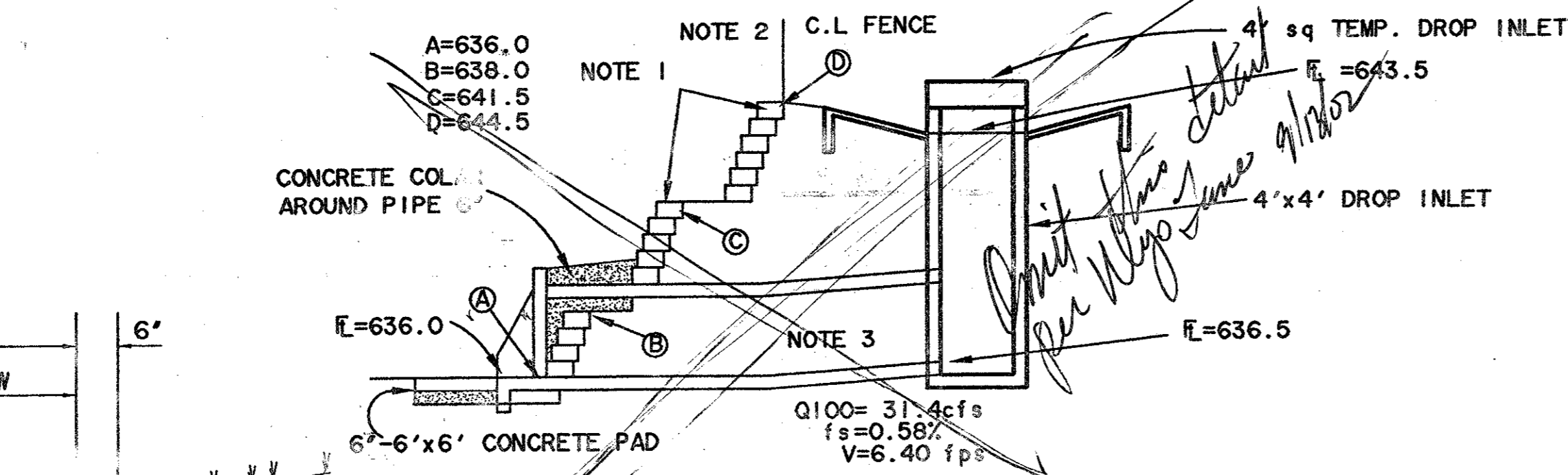
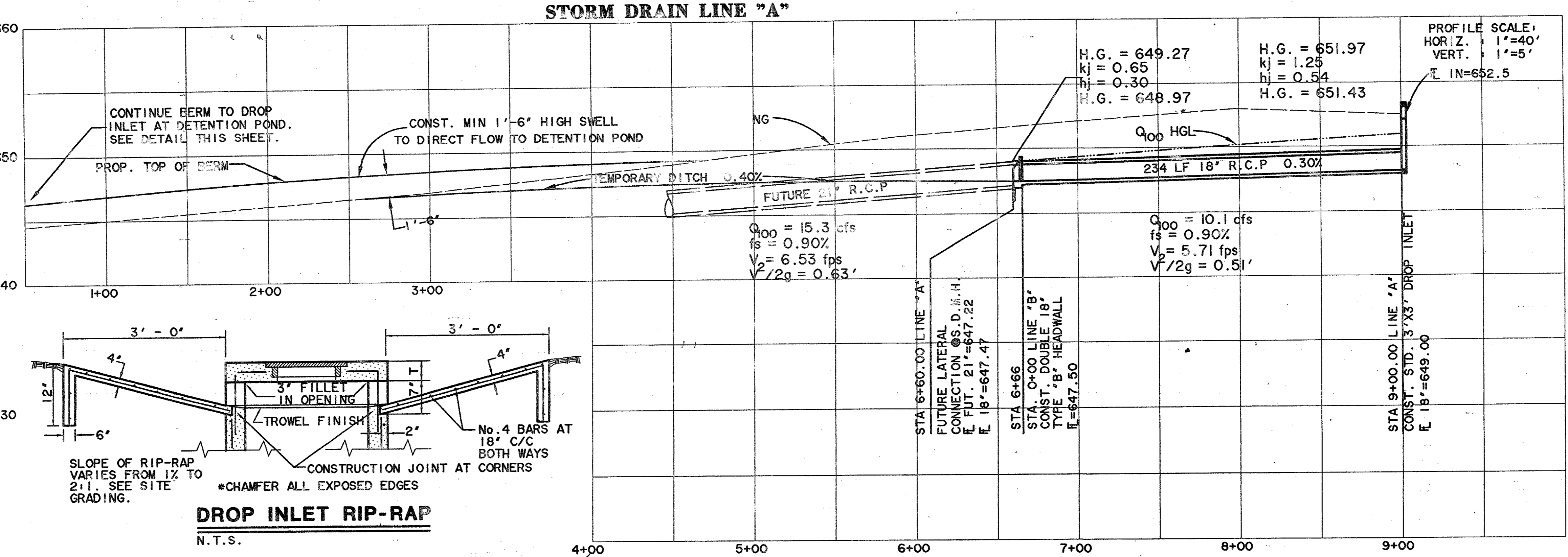
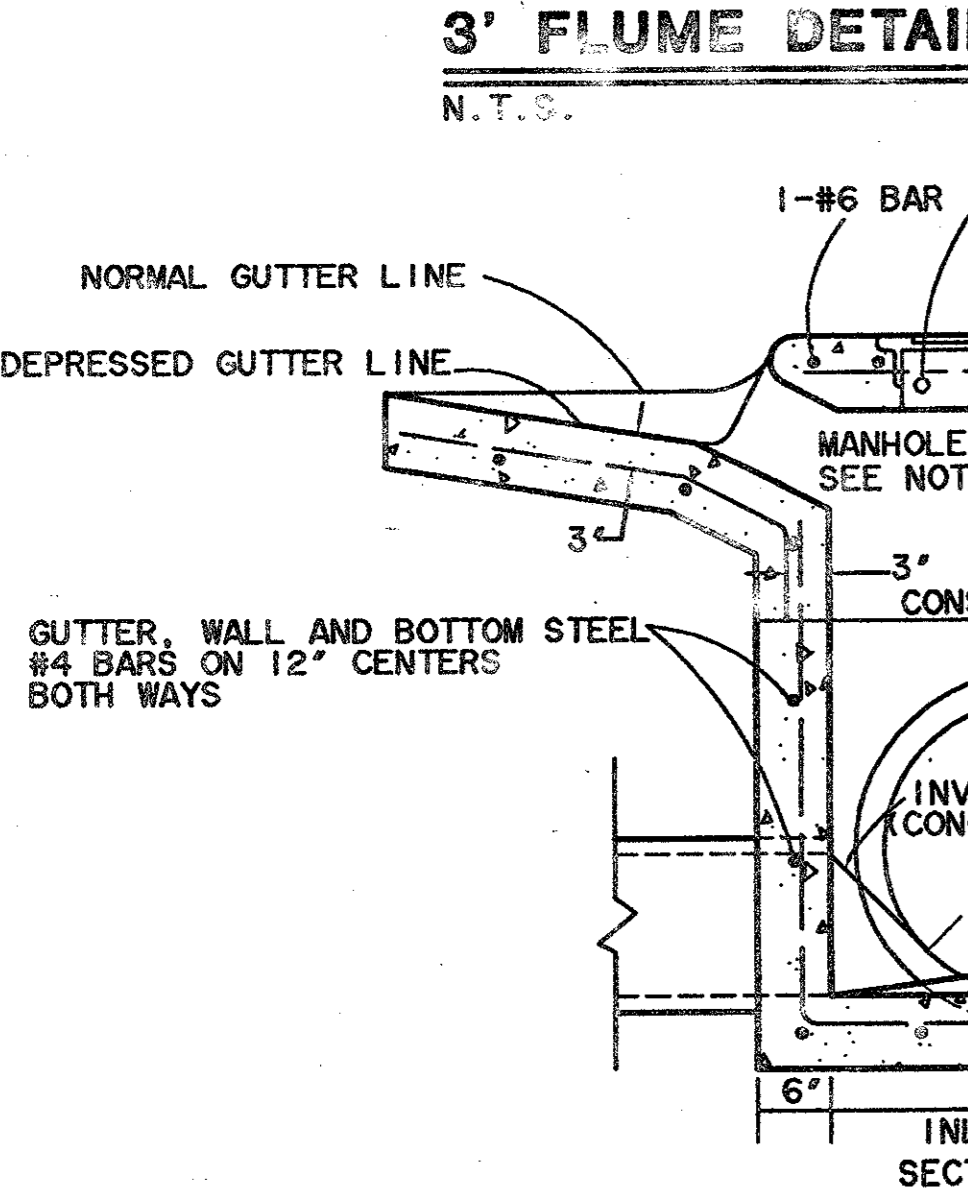
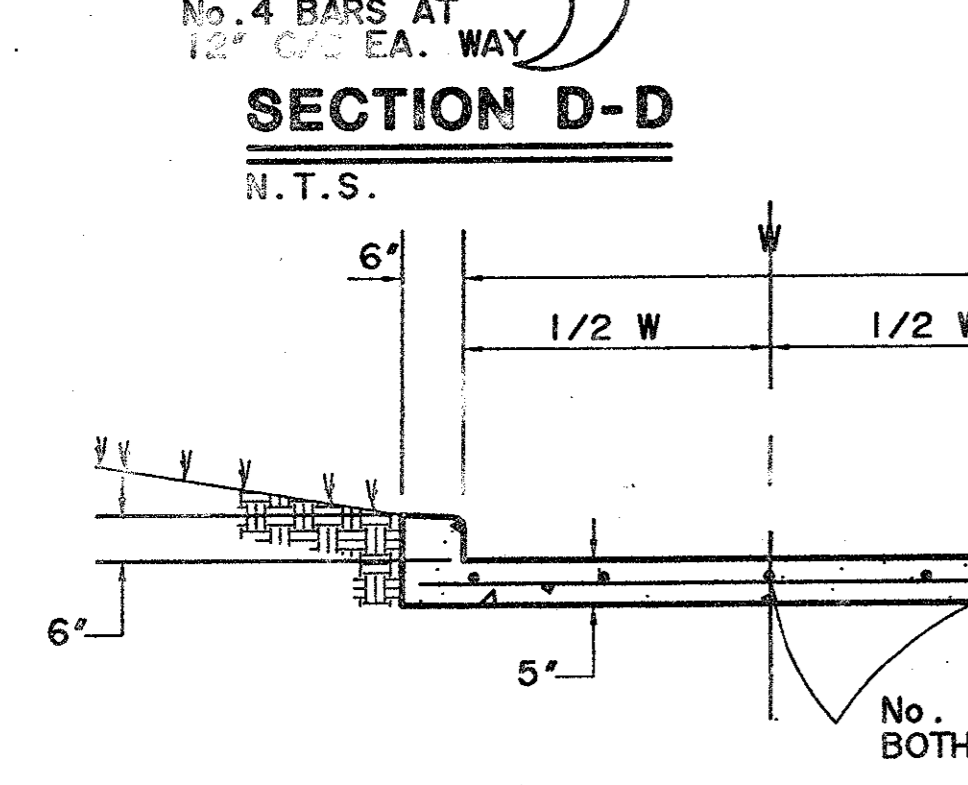
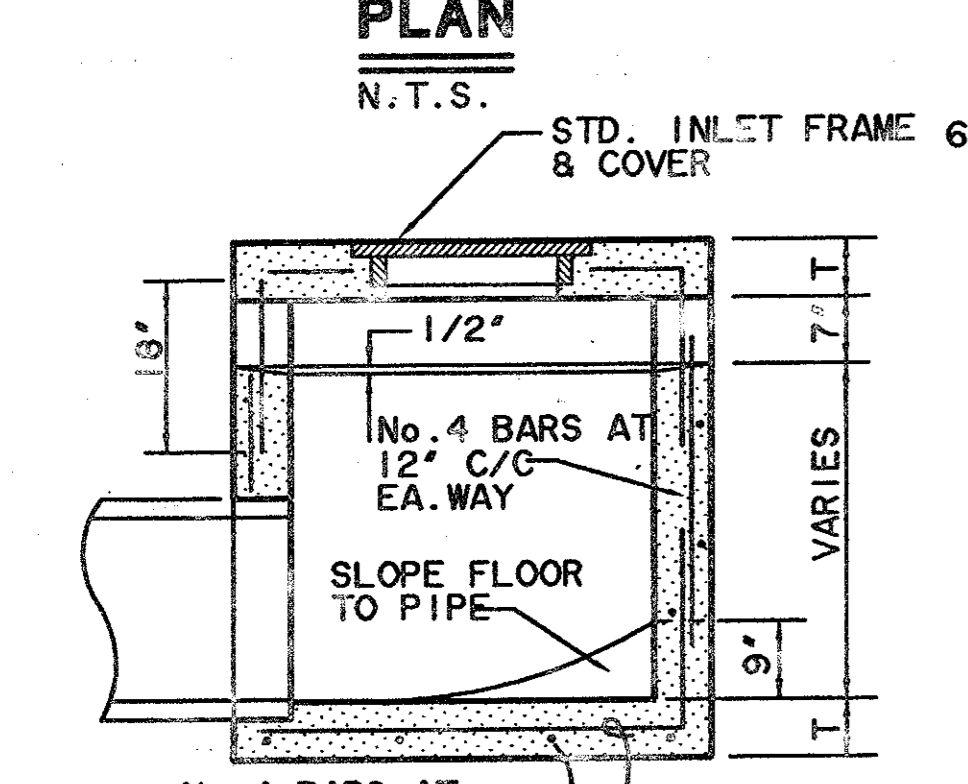
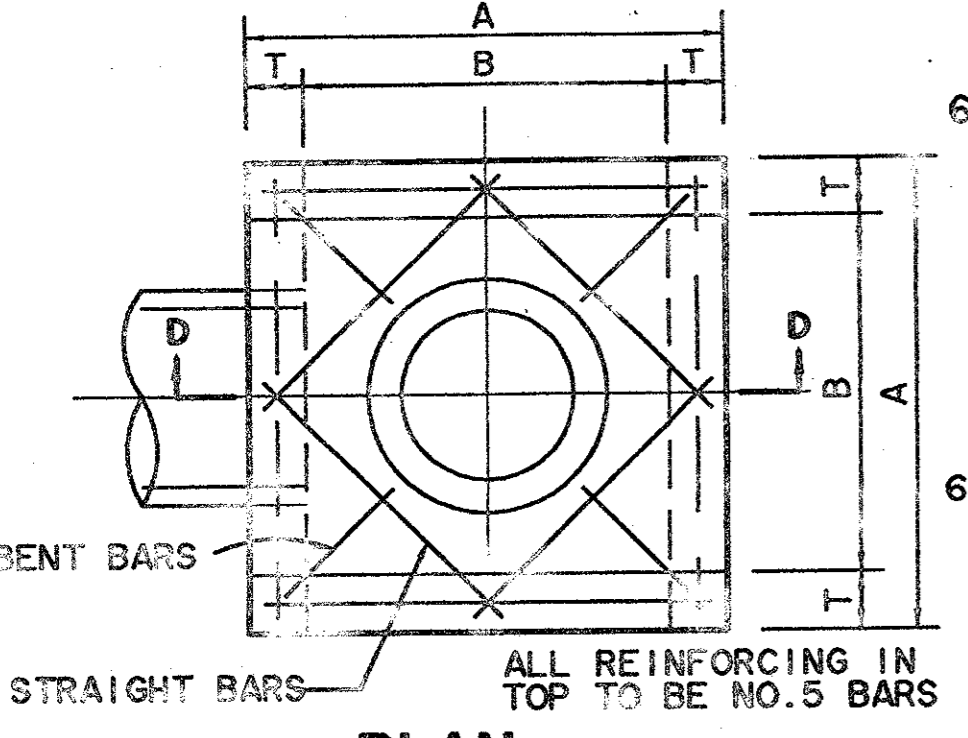
GRADING & DRAINAGE PLAN

STATE OF TEXAS
JULY 15, 1984
COPYRIGHT ©
WIER & ASSOCIATES, INC.
LAST SHEET FILED
DATE 08-12-2002
WAW 01055
SHEET NO. 5

TIME 17:39 FILE: 1.Grade.dwg



DIMENSIONS FOR DROP INLET			
INLET SIZE	A	B	T
2' X 2'	36"	24"	6"
3' X 3'	48"	36"	6"
4' X 4'	60"	48"	6"

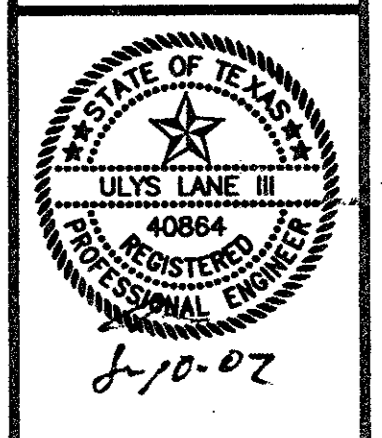


PREPARED BY:
WIER & ASSOCIATES, INC.
 ENGINEERS SURVEYORS LAND PLANNERS
 4300 BELWAY PLACE SUITE 130 ARLINGTON, TEXAS 76010 METRO (817)467-7700
 8721 5th STREET FRODO, TEXAS METRO (214)397-8800
 www.wierassociates.com

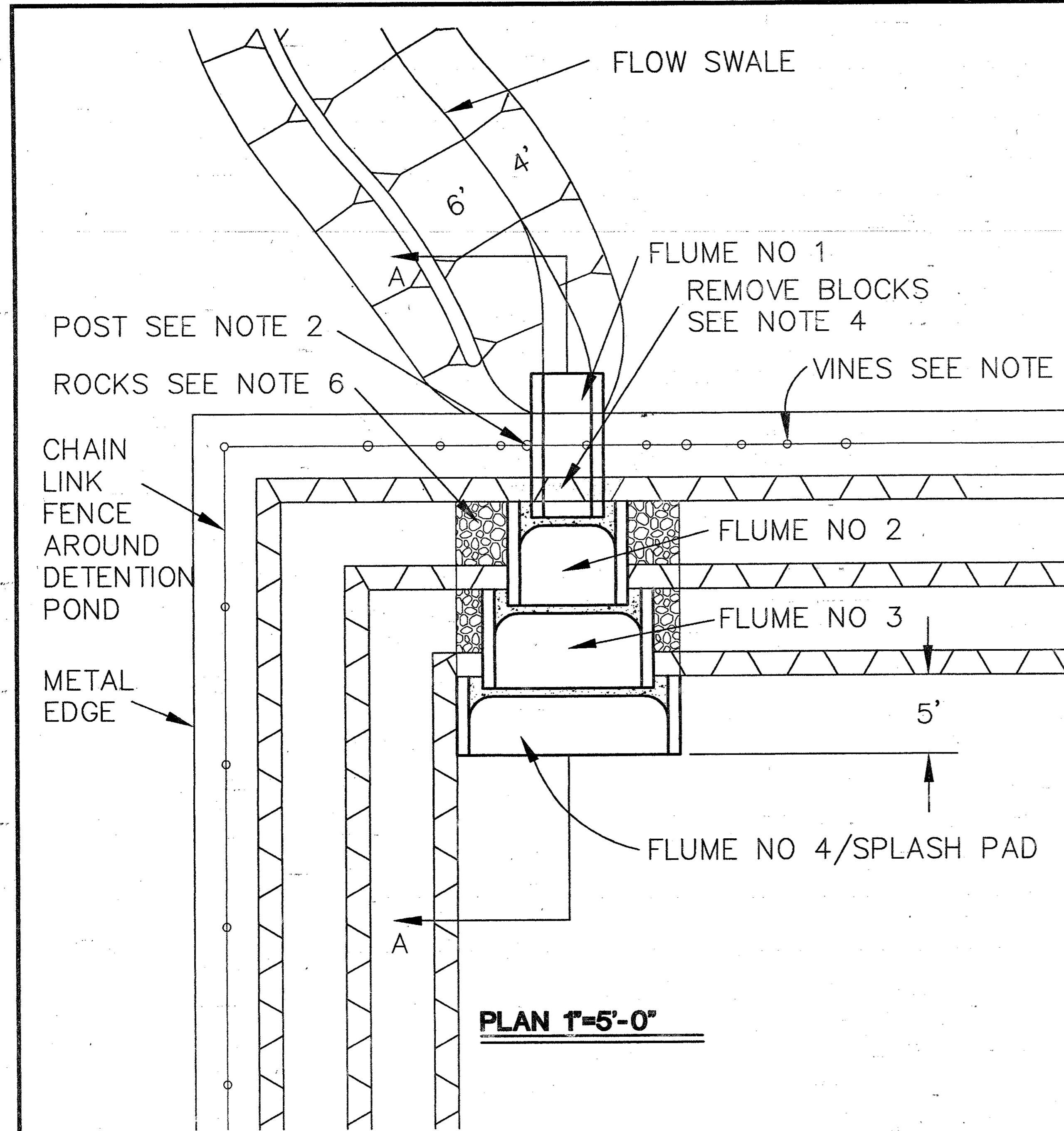
NO.	DATE	DESCRIPTION	BY

START INTERNATIONAL
 SOJOURN PLAZA
 ADDITION
 LOT 3R, BLOCK A

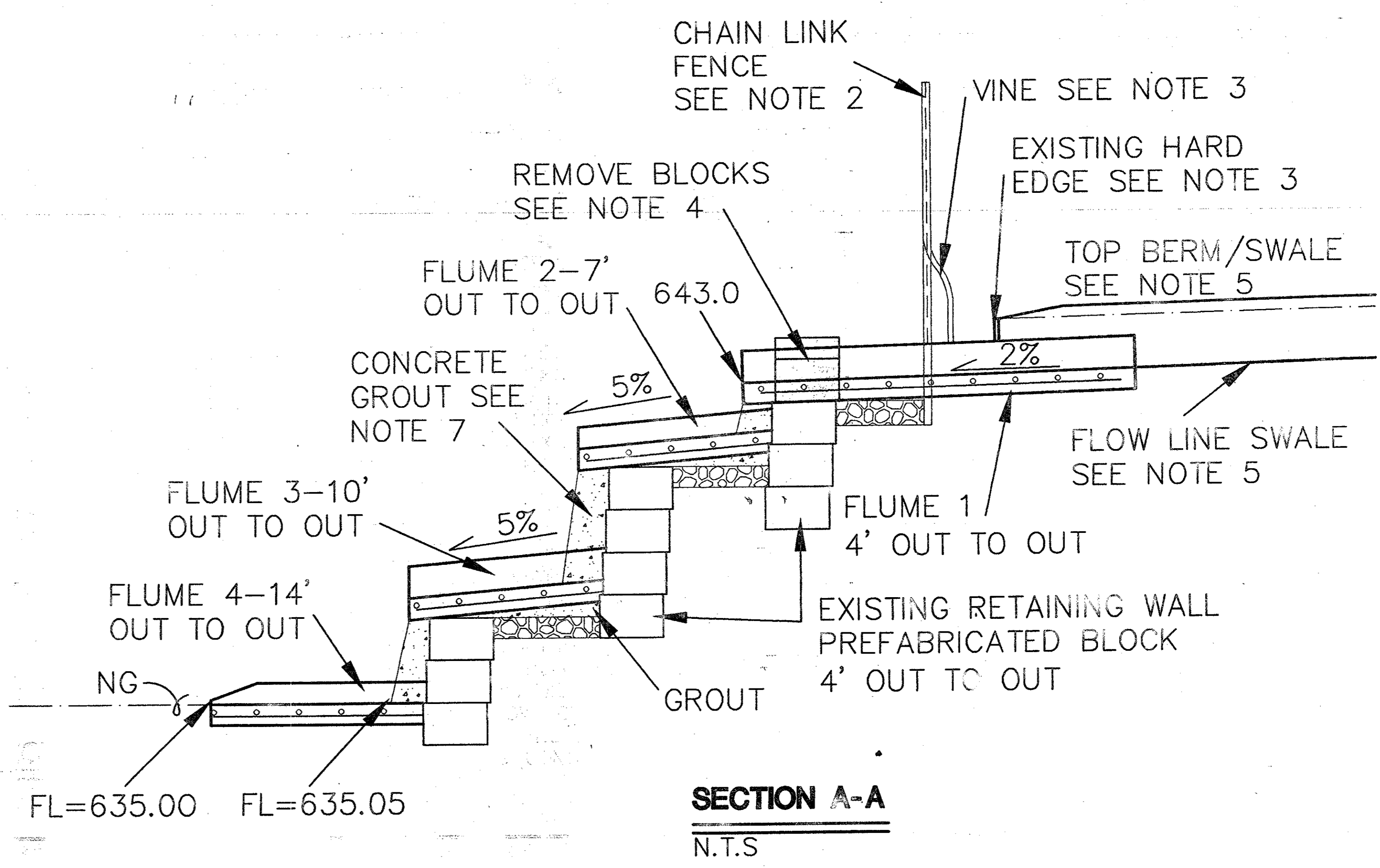
STORM DRAIN
 PROFILES AND DETAILS



COPYRIGHT ©
 WIER & ASSOCIATES, INC.
 LAST SHEET EDIT
 DATE 06/06/02
 WA# 01095
 SHEET NO. 7



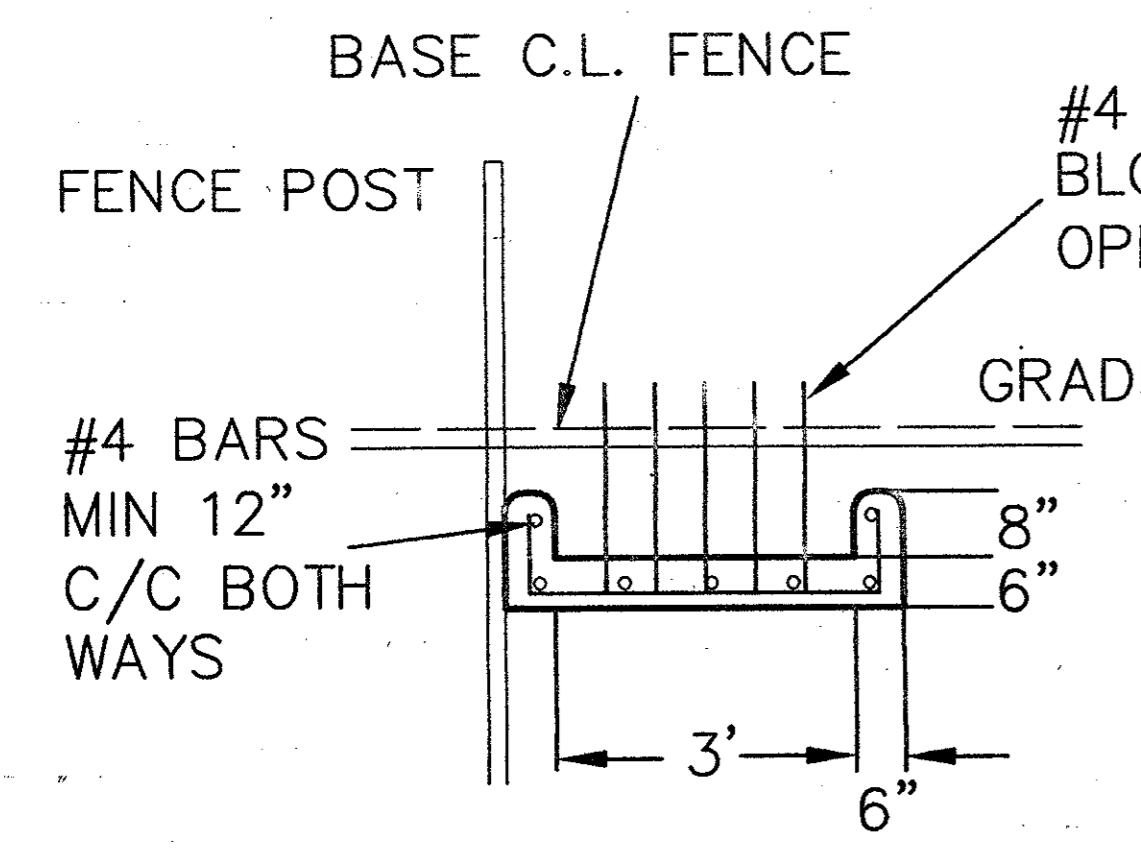
PLAN 1'-5'-0"



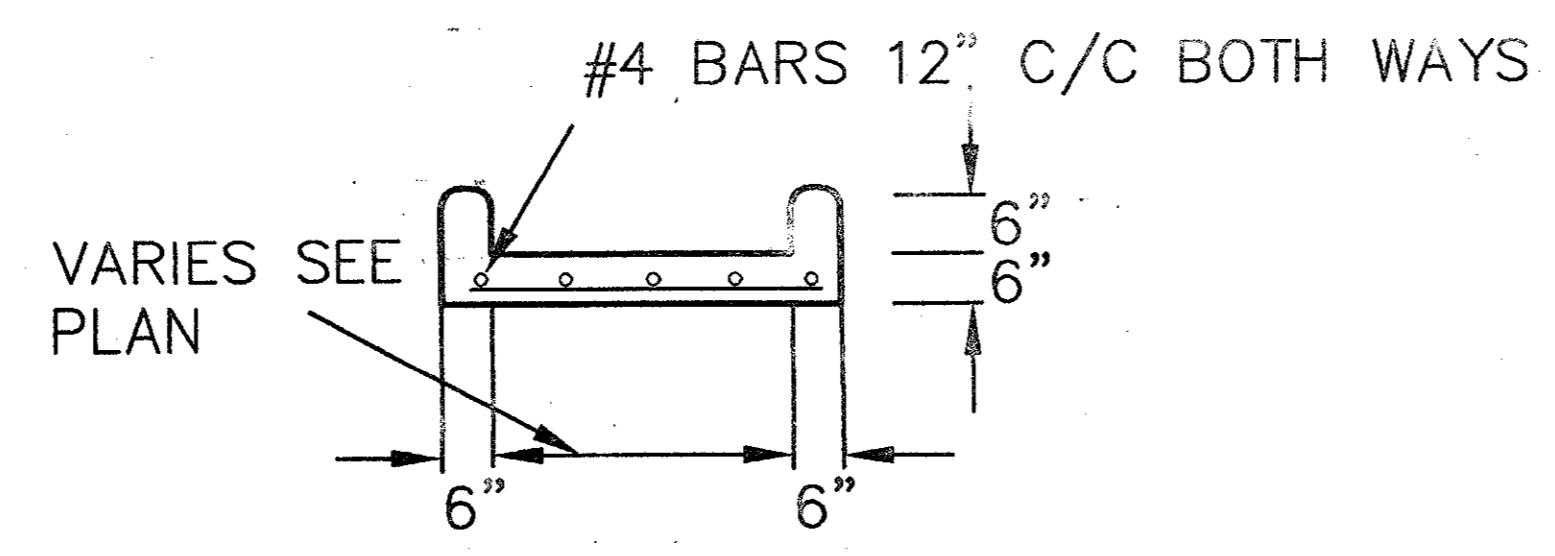
SECTION A-A
N.T.S

DROP FLUME INTO EXISTING DETENTION POND NOTES

1. DO NOT DISTURB EXISTING LANDSCAPING BEYOND OUTSIDE OF FLUME NO. HAND WORK ALL EXCAVATION AND REMOVAL OF ITEMS. CONSTRUCT FLUMES FROM DOWNHILL TO UPHILL AND PLACE CONCRETE AND ALL WORK WITHOUT REMOVING EXISTING CHAIN LINK FENCE. PLACE CONCRETE SHUT UNDER FENCE AFTER REMOVAL OF UPPER WALL BLOCKS AND MOVE BY HAND.
2. PLACE SOUTH OUTSIDE FLUME NO. 1 BUTTING UP TO EXISTING CHAIN LINK FENCE POST.
3. REMOVE MAXIMUM ONE VINE AT ENTRY OF FLUME NO. INTO EXISTING DETENTION POND. CUT OUT AND REMOVE METAL LANDSCAPE HARD EDGE FLUSH WITHOUT OF FLUME. DO NOT DISTURB EXISTING LANDSCAPING BEYOND OUTSIDE OF FLUME NO. 1 FORM. HAND WORK ALL EXCAVATION AND REMOVAL OF ITEMS.
4. REMOVE EXISTING CONCRETE PRECAST BLOCKS AT TOP FLUME AND DELIVER TO TOWN OF ADDISON TO SALVAGE. REMOVE TOP CAP AND FIRST BLOCK AS REQUIRED TO INSTALL FLUME. CONCRETE GROUT BETWEEN BLOCKS AND OUTSIDE OF FLUME.
5. EXTEND EARTHEN BERM/SWALE UP TO METAL HARD EDGE. CONSTRUCT BERM/SWALE BY COMBINATION OF CUTTING AND FILLING TO MINIMIZE IMPACT TO APPEARANCE OF OFFSITE PROPERTY.
6. REINSTALL CRUSHED STONE BASE AT EDGE OF FLUMES AND ADD TO AS REQUIRED TO FILL VOIDS.
7. PLACE CONCRETE GROUT ON FACE OF BLOCKS BENEATH FLUMES AND WIDEN GROUT WIDTH AROUND OUTSIDE EDGES TO CUP AND DIRECT FLOW TOWARD CENTER OF FLUMES.
8. ALL CONCRETE FOR FLUMES AND GROUT TO BE MINIMUM 4,200 PSI CONCRETE WITH MINIMUM 6 SACK CEMENT PER CUBIC YARD.



FLUME NO 1 SECTION
N.T.S



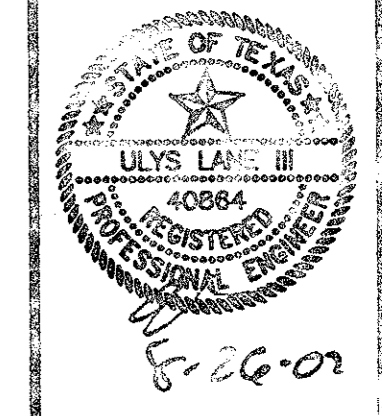
FLUME NO 2,3 AND 4 SECTION
N.T.S

PREPARED BY:
VIVA WIEH & ASSOCIATES, INC.
 ENGINEERS SURVEYORS LAND PLANNERS
 400 BELLEVUE PLACE SUITE 130 DALLAS, TEXAS 75246 MEMO (07/10)-770
 8721 S. SHEET ROAD, TEXAS MEMO (04/07)-802
 www.vivawieh.com

NO.	DESCRIPTION	BY

START INTERNATIONAL
 SOJOURN PLAZA
 ADDITION
 LOT 3R, BLOCK A

FLUME DETAIL
 ANI SECTIONS



COPYRIGHT ©
 VIVA WIEH & ASSOCIATES
 LAST SHEET EDIT
 DATE 08-26-2002
 WAF 01025
 SHEET NO.
 7A

FILE: FlumeDetail.dwg
 TIME: 09:29

