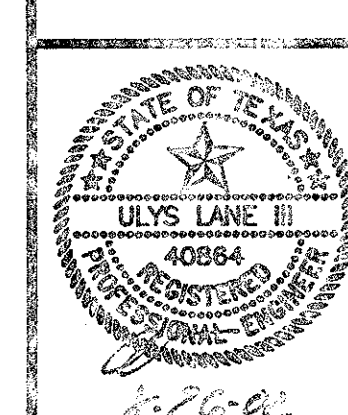


11-29

PREPARED BY:
WIA WIER & ASSOCIATES, INC.
 ENGINEERS, SURVEYORS, LAND PLANNERS &
 430 WEST RICE STREET, SUITE 1700, HOUSTON, TEXAS 77056 (713) 791-7700
 (713) 791-7700 FAX (713) 791-7700

START INTERNATIONAL
 SOJOURN PLAZA
 ADDITION
 LOT 3R, BLOCK A

DRAINAGE AREA
 MAP



SHEET NO.
 4

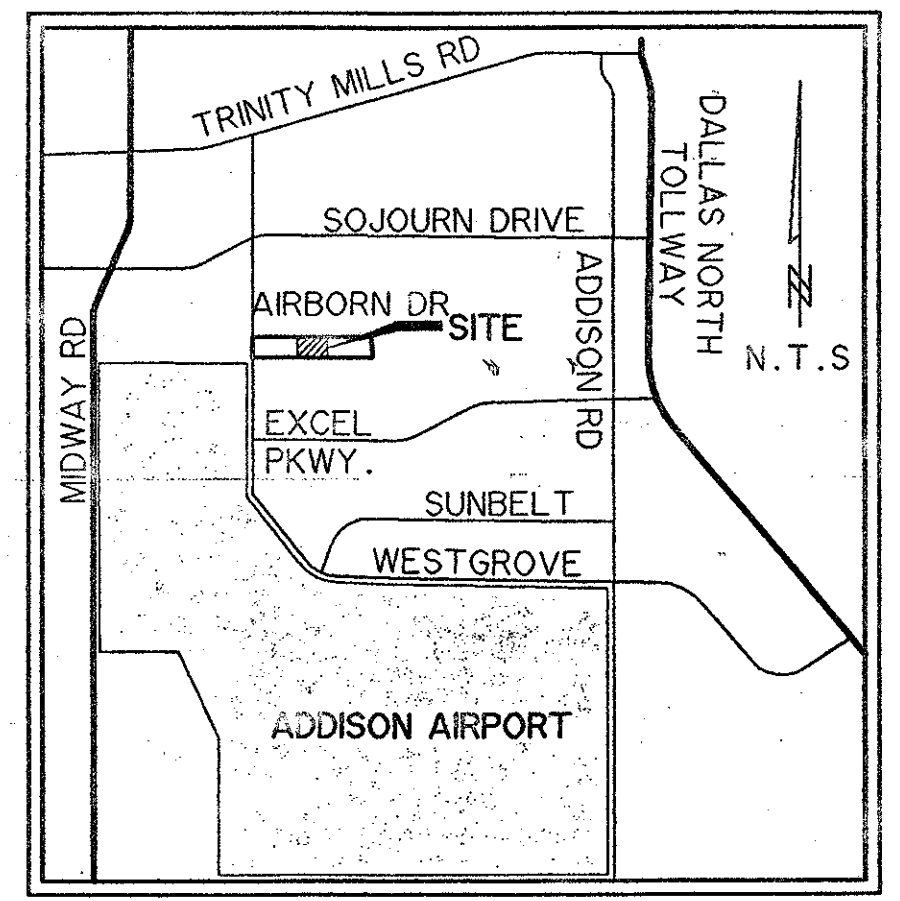
4720 AIRBORN Const-Set.

11-29

CAUTION !!!
UNDERGROUND UTILITIES

EXISTING UTILITIES AND UNDERGROUND FACILITIES INDICATED ON THESE PLANS HAVE BEEN LOCATED FROM REFERENCE INFORMATION SUPPLIED BY VARIOUS OWNERS OF THE FACILITIES. THE ENGINEER DOES NOT ACCEPT THE RESPONSIBILITY FOR THE UTILITY LOCATIONS SHOWN, IT SHALL BE THE RESPONSIBILITY OF THE CONTRACTOR TO VERIFY BOTH HORIZONTALLY AND VERTICALLY THE LOCATION OF ALL EXISTING UTILITIES AND UNDERGROUND FACILITIES PRIOR TO CONSTRUCTION, TO TAKE NECESSARY PRECAUTIONS IN ORDER TO PROTECT ALL FACILITIES ENCOUNTERED, AND TO NOTIFY THE ENGINEER PROMPTLY OF ALL CONFLICTS OF THE WORK WITH EXISTING FACILITIES. THE CONTRACTOR SHALL PRESERVE AND PROTECT ALL EXISTING UTILITIES FROM DAMAGE DURING CONSTRUCTION. ANY DAMAGE BY THE CONTRACTOR TO EXISTING UTILITIES SHALL BE REPAIRED BY THE CONTRACTOR AT HIS EXPENSE. CONTACT ALL POSSIBLE UTILITY AND UNDERGROUND FACILITY OWNERS.

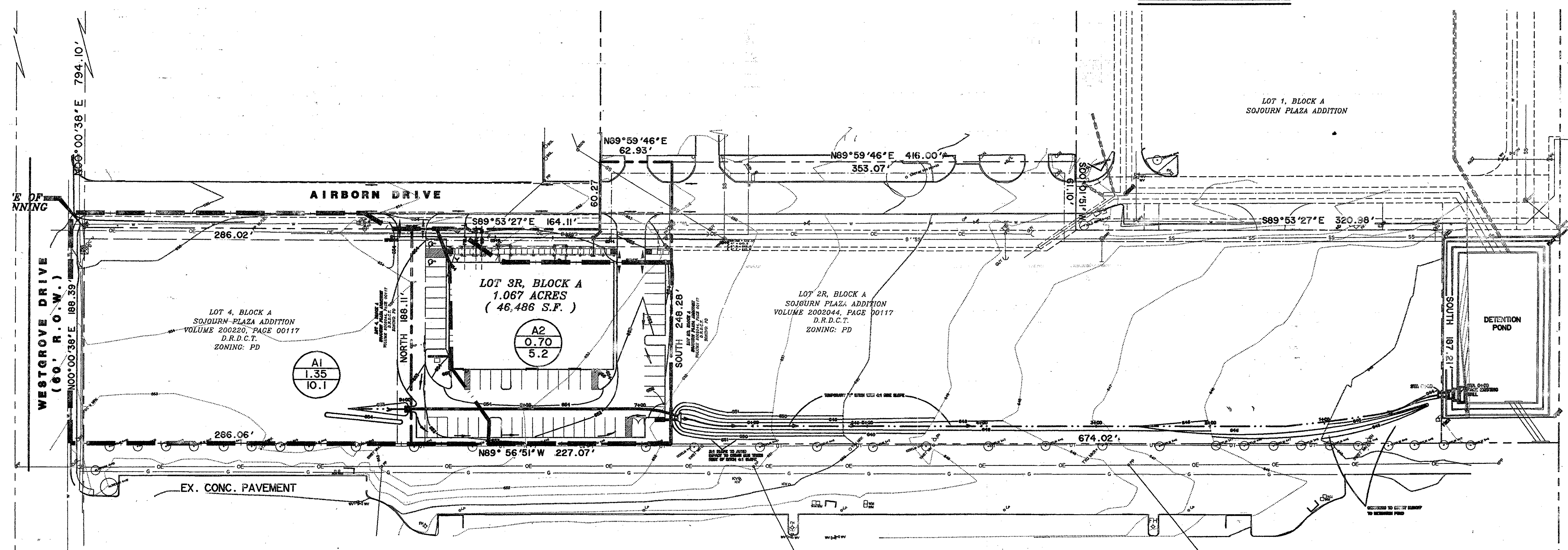
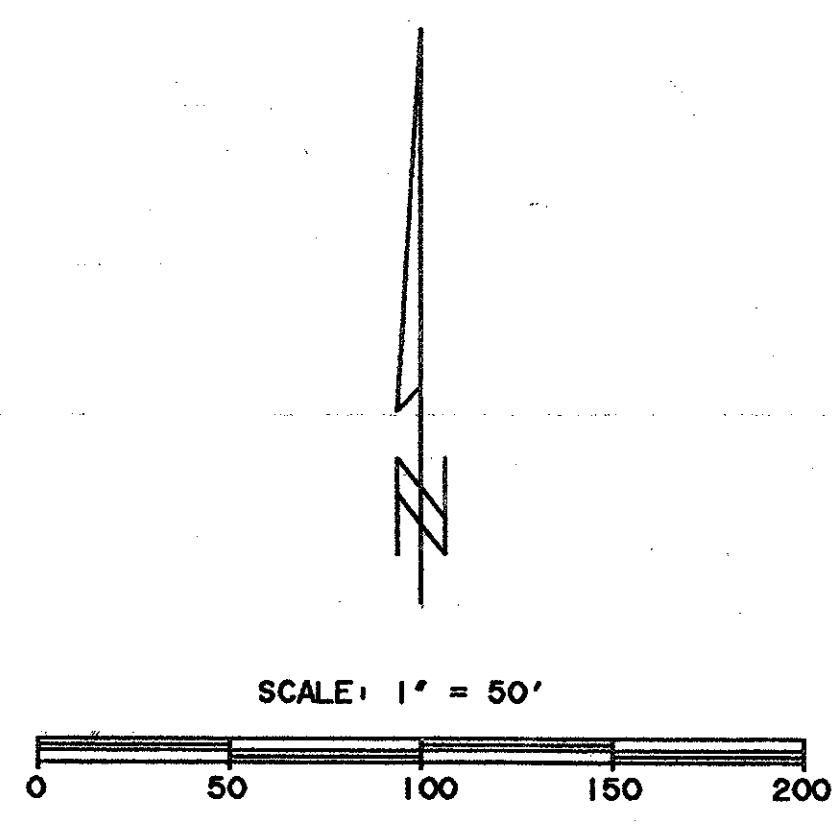
- * BENCH MARKS*
1. R.R. SPIKE SOUTH SIDE 2ND P.P. NORTH SIDE AIRBORN DR. EAST OF INT. OF AIRBORN BORN AND WESTGROVE. ELEV. 655.28
 2. *X* CUT NORTHWEST CORNER *Y* INLET JUST SOUTHEAST OF THE SOUTHEAST CORNER OF LOT 2, BLOCK A. ELEV. 642.21



VICINITY MAP

LEGEND

	PROPOSED INLET
	PROPOSED CONTOUR
	EX. CONTOUR LINE
	DRAINAGE AREA DIVIDE
	DRAINAGE AREA SUBDIVIDE
	DRAINAGE AREA DESIGNATION
	AREA IN ACRES
	100 YR. FLOW (C.F.S.)



DESIGN POINT	DESIGNATION AREA	TOTAL AREA (ACRES)	INCREMENTAL AREAS		TOTAL CA	TC	I ₁₀₀	Q ₁₀₀	COMMENTS
			COMMERCIAL C=0.85	UNDEVELOPED C=0.40					
	A1	1.35	1.35		1.15	10	8.74	10.1	3' DROP INLET
	A2	0.70	0.70		0.60	10	8.74	5.2	6' CURB INLET

TIME 16:20 FILE: DAMAP.Dwg