

| NO. | DATE | DESCRIPTION | BY |
|-----|------|-------------|----|
|     |      |             |    |
|     |      |             |    |
|     |      |             |    |

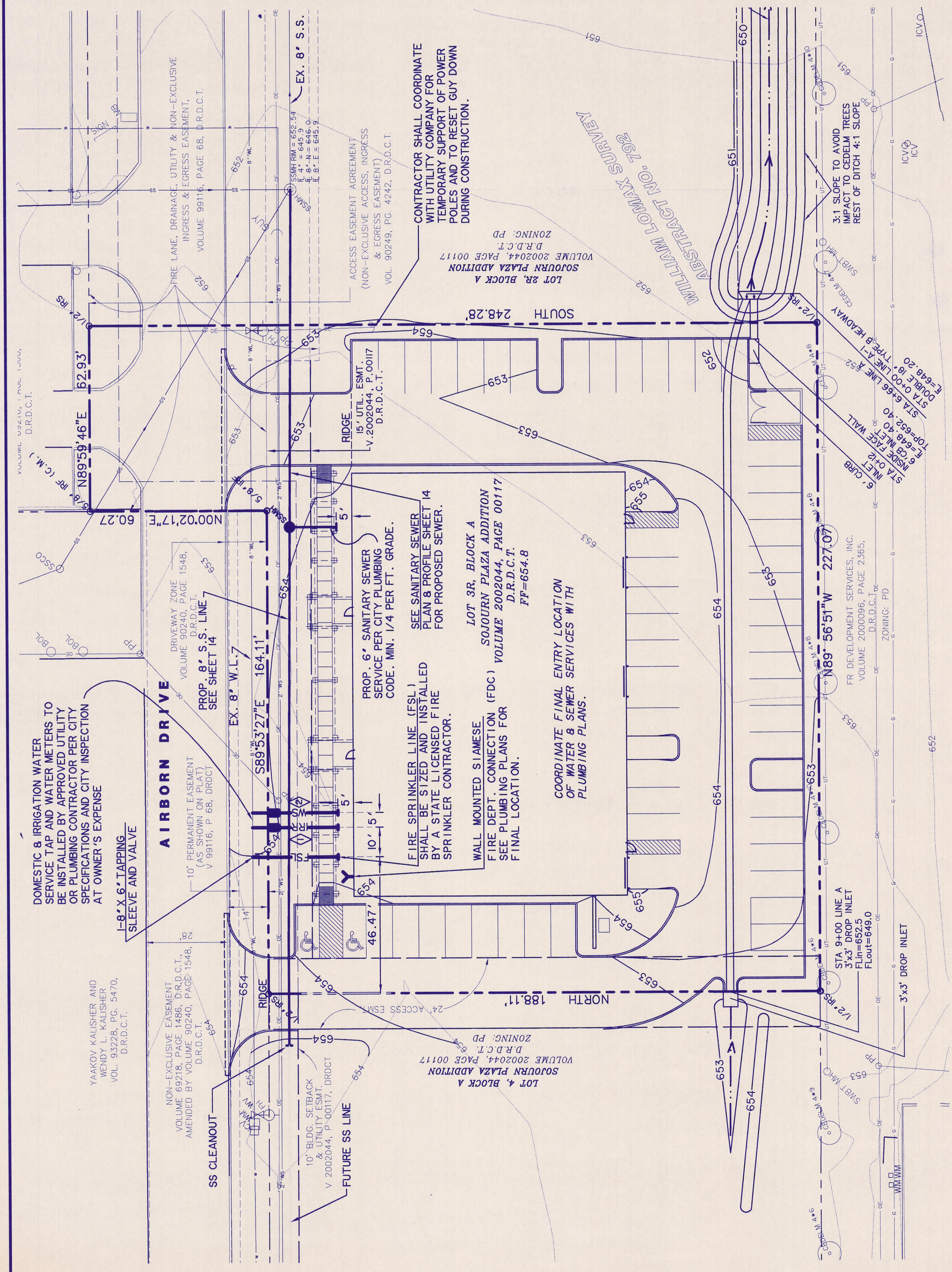
START INTERNATIONAL  
 SOJOURN PLAZA  
 ADDITION  
 LOT 3R, BLOCK A

WATER & SANITARY  
 SEWER LAYOUT

7.10.02

COPYRIGHT © WIER & ASSOCIATES, INC.  
 LAST SHEET  
 DATE 06-24-2002  
 W.A.# 01695

**SHEET NO. 13**



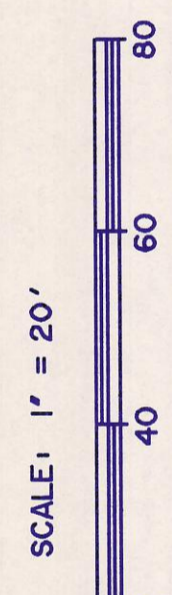
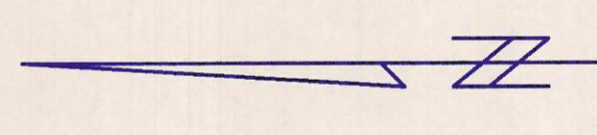
**LEGEND**

Y SSMH  
 FDC- FIRE DEPARTMENT CONNECTION  
 SANITARY SEWER MANHOLE

- \* BENCH MARKS\*
1. R.R. SPIKE SOUTH SIDE 2ND P.P., NORTH SIDE AIRBORN DR. EAST OF INT. OF AIRBORN BORN AND WEST GROVE. ELEV. 655.28
  2. \* X \* CUT NORTHWEST CORNER \* Y \* INLET JUST SOUTHEAST OF THE SOUTHEAST CORNER OF LOT 2, BLOCK A. ELEV. 642.21

**WATER METER SCHEDULE**

| ID. | TYPE       | SIZE | QTY. | SAN SEWER |
|-----|------------|------|------|-----------|
|     | DOMESTIC   | 2"   | 1    | 6"        |
|     | IRRIGATION | 1"   | 1    | N.A.      |



**CAUTION !!!**  
 UNDERGROUND UTILITIES

EXISTING UTILITIES AND UNDERGROUND FACILITIES INDICATED ON THESE PLANS HAVE BEEN LOCATED FROM REFERENCE INFORMATION SUPPLIED BY VARIOUS OWNERS OF THE FACILITIES. THE ENGINEER DOES NOT ACCEPT THE RESPONSIBILITY FOR THE UTILITY LOCATIONS SHOWN, IT SHALL BE THE RESPONSIBILITY OF THE CONTRACTOR TO VERIFY BOTH HORIZONTALLY AND VERTICALLY THE LOCATION OF ALL EXISTING UTILITIES AND UNDERGROUND FACILITIES PRIOR TO CONSTRUCTION, TO TAKE NECESSARY PRECAUTIONS IN ORDER TO PROTECT ALL FACILITIES ENCOUNTERED, AND TO NOTIFY THE ENGINEER PROMPTLY OF ALL CONFLICTS OF THE WORK WITH EXISTING FACILITIES. THE CONTRACTOR SHALL PRESERVE AND PROTECT ALL EXISTING UTILITIES FROM DAMAGE DURING CONSTRUCTION. ANY DAMAGE BY THE CONTRACTOR TO EXISTING UTILITIES SHALL BE REPAIRED BY THE CONTRACTOR AT HIS EXPENSE. CONTACT ALL POSSIBLE UTILITY AND UNDERGROUND FACILITY OWNERS.

DOMESTIC & IRRIGATION WATER SERVICE TAP AND WATER METERS TO BE INSTALLED BY APPROVED UTILITY OR PLUMBING CONTRACTOR PER CITY SPECIFICATIONS AND CITY INSPECTION AT OWNER'S EXPENSE

YAAKOV KAUSHER AND WENDY L. KAUSHER  
 VOL. 93228, PG. 5470,  
 D.R.D.C.T.

**AIRBORN DRIVE**  
 DRIVEWAY ZONE VOLUME 90240, PAGE 1548, D.R.D.C.T.  
 PROP. 8" S.S. LINE SEE SHEET 14

10' PERMANENT EASEMENT (AS SHOWN ON P. 68, DRDCT) V. 99116, P. 68, DRDCT

EX. 8" W.L.7

SS CLEANOUT

10" BLDG. SETBACK & UTILITY ESMT. V. 2002044, P-00117, DRDCT

15' UTIL. ESMT. V. 2002044, P. 00117 D.R.D.C.T.

CONTRACTOR SHALL COORDINATE WITH UTILITY COMPANY FOR TEMPORARY SUPPORT OF POWER POLES AND TO RESET GUY DOWN DURING CONSTRUCTION.

ACCESS EASEMENT AGREEMENT (NON-EXCLUSIVE ACCESS, INGRESS & EGRESS EASEMENT) VOL. 90249, PG. 4242, D.R.D.C.T.

LOT 2R, BLOCK A SOJOURN PLAZA ADDITION VOLUME 2002044, PAGE 00117 ZONING: PD

WILLIAM LOMAX SURVEY ABSTRACT NO. 792

3:1 SLOPE TO AVOID IMPACT TO CEDEM TREES REST OF DITCH 4:1 SLOPE

FR DEVELOPMENT SERVICES, INC. VOLUME 2000096, PAGE 2365, D.R.D.C.T. ZONING: PD

FR DEPARTMENT SERVICES, INC. VOLUME 2000096, PAGE 2365, D.R.D.C.T. ZONING: PD

FR DEVELOPMENT SERVICES, INC. VOLUME 2000096, PAGE 2365, D.R.D.C.T. ZONING: PD

FR DEVELOPMENT SERVICES, INC. VOLUME 2000096, PAGE 2365, D.R.D.C.T. ZONING: PD

FR DEVELOPMENT SERVICES, INC. VOLUME 2000096, PAGE 2365, D.R.D.C.T. ZONING: PD

FR DEVELOPMENT SERVICES, INC. VOLUME 2000096, PAGE 2365, D.R.D.C.T. ZONING: PD

FR DEVELOPMENT SERVICES, INC. VOLUME 2000096, PAGE 2365, D.R.D.C.T. ZONING: PD

FR DEVELOPMENT SERVICES, INC. VOLUME 2000096, PAGE 2365, D.R.D.C.T. ZONING: PD

FR DEVELOPMENT SERVICES, INC. VOLUME 2000096, PAGE 2365, D.R.D.C.T. ZONING: PD

FR DEVELOPMENT SERVICES, INC. VOLUME 2000096, PAGE 2365, D.R.D.C.T. ZONING: PD

FR DEVELOPMENT SERVICES, INC. VOLUME 2000096, PAGE 2365, D.R.D.C.T. ZONING: PD

FR DEVELOPMENT SERVICES, INC. VOLUME 2000096, PAGE 2365, D.R.D.C.T. ZONING: PD

FR DEVELOPMENT SERVICES, INC. VOLUME 2000096, PAGE 2365, D.R.D.C.T. ZONING: PD

FR DEVELOPMENT SERVICES, INC. VOLUME 2000096, PAGE 2365, D.R.D.C.T. ZONING: PD

FR DEVELOPMENT SERVICES, INC. VOLUME 2000096, PAGE 2365, D.R.D.C.T. ZONING: PD

FR DEVELOPMENT SERVICES, INC. VOLUME 2000096, PAGE 2365, D.R.D.C.T. ZONING: PD