

NO.	DATE	DESCRIPTION	BY

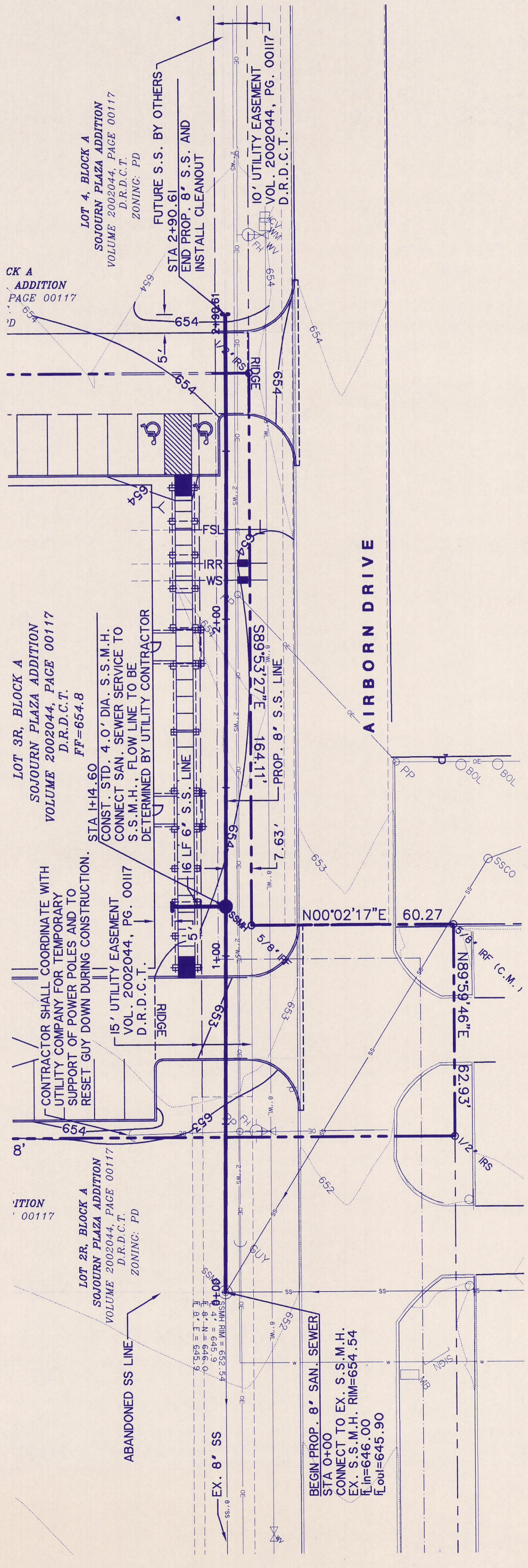
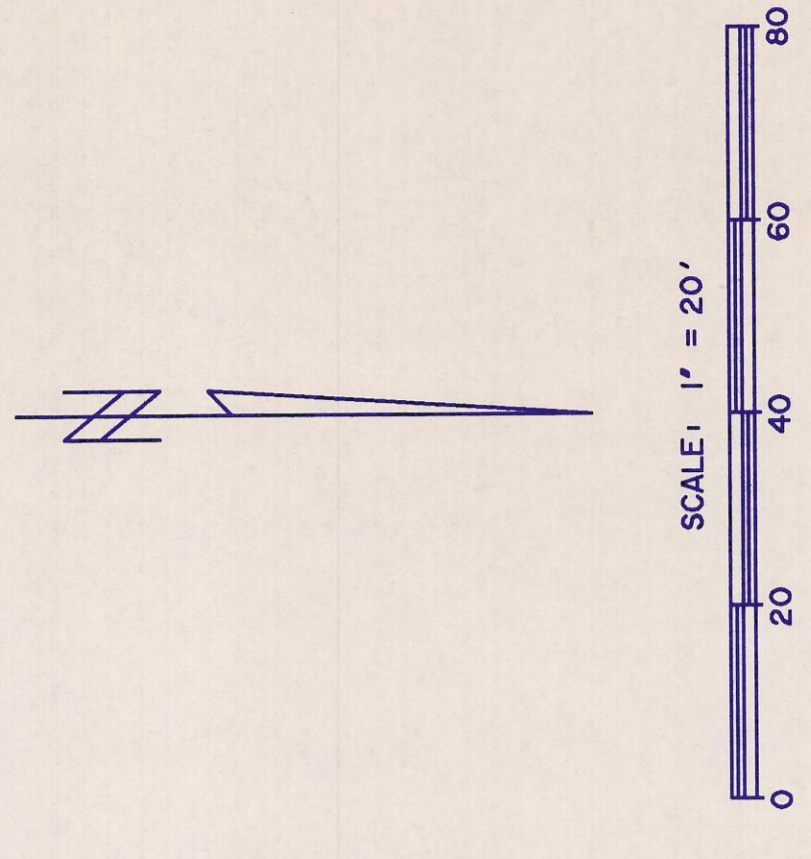
START INTERNATIONAL  
 SOJOURN PLAZA  
 ADDITION  
 LOT 3R, BLOCK A

SANITARY SEWER  
 PLAN & PROFILE



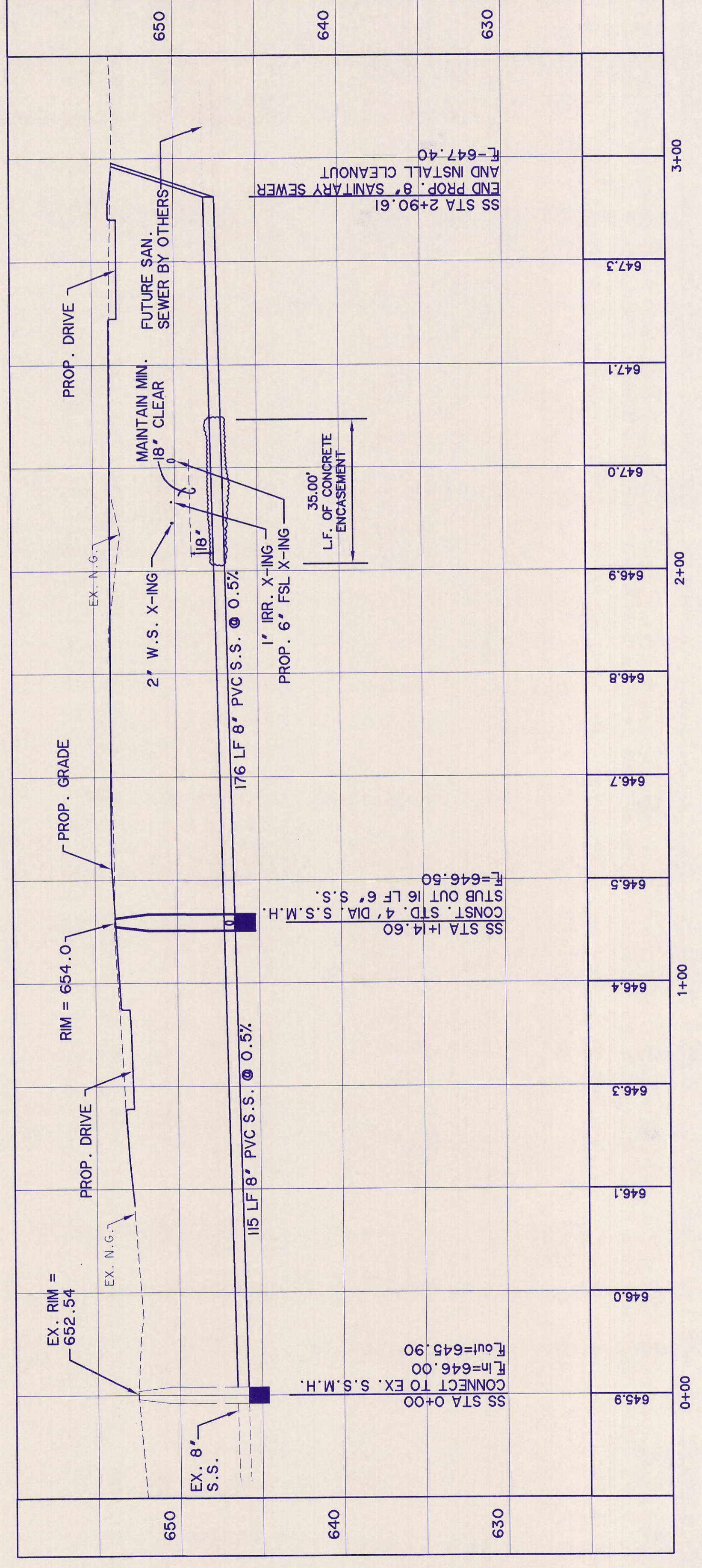
COPYRIGHT ©  
 WIER & ASSOCIATES, INC.  
 DATE: 06-24-2009  
 DRAWING NO.  
 WA # 01095

SHEET NO. 14



PROFILE SCALE:  
 HORIZ. 1" = 20'  
 VERT. 1" = 5'

SANITARY SEWER



- \* BENCH MARKS\*
- R.R. SPIKE SOUTH SIDE 2ND P.P. NORTH SIDE AIRBORN DR. EAST OF INT. OF AIRBORN BORN AND WESTGROVE. ELEV. 655.28
  - \* X\* CUT NORTHWEST CORNER \* Y\* INLET JUST SOUTHEAST OF THE SOUTHEAST CORNER OF LOT 2, BLOCK A. ELEV. 642.21

CAUTION !!!  
 UNDERGROUND UTILITIES

EXISTING UTILITIES AND UNDERGROUND FACILITIES INDICATED ON THESE PLANS HAVE BEEN LOCATED FROM REFERENCE INFORMATION SUPPLIED BY VARIOUS OWNERS OF THE FACILITIES. THE ENGINEER DOES NOT ACCEPT THE RESPONSIBILITY FOR THE UTILITY LOCATIONS SHOWN, IT SHALL BE THE RESPONSIBILITY OF THE CONTRACTOR TO VERIFY BOTH HORIZONTALLY AND VERTICALLY THE LOCATION OF ALL EXISTING UTILITIES AND UNDERGROUND FACILITIES PRIOR TO CONSTRUCTION, TO TAKE NECESSARY PRECAUTIONS IN ORDER TO PROTECT ALL FACILITIES ENCOUNTERED, AND TO NOTIFY THE ENGINEER PROMPTLY OF ALL CONFLICTS OF THE WORK WITH EXISTING UTILITIES. THE CONTRACTOR SHALL PRESERVE AND PROTECT ALL EXISTING UTILITIES FROM DAMAGE DURING CONSTRUCTION. ANY DAMAGE BY THE CONTRACTOR TO EXISTING UTILITIES SHALL BE REPAIRED BY THE CONTRACTOR AT HIS EXPENSE. CONTACT ALL POSSIBLE UTILITY AND UNDERGROUND FACILITY OWNERS.