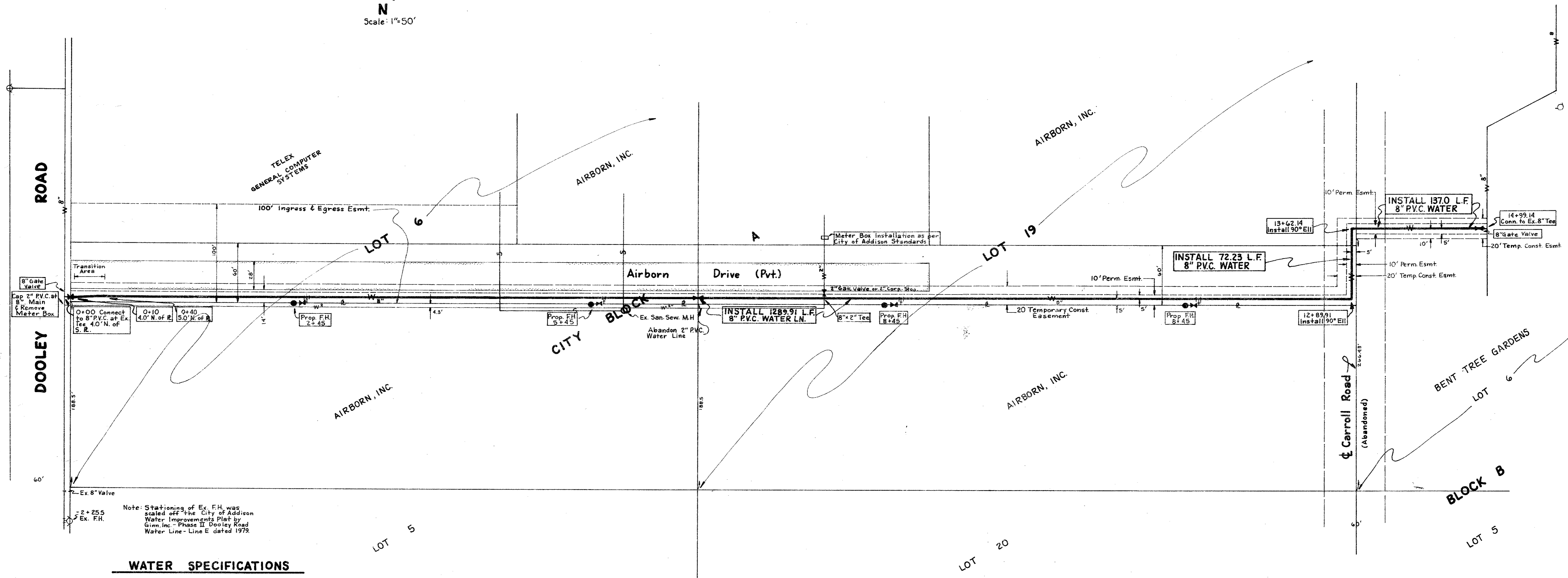
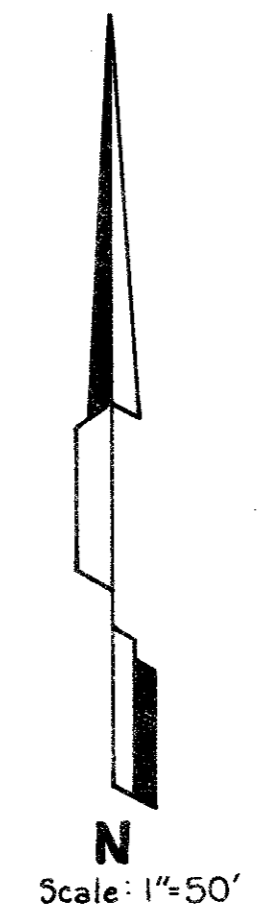


ESTIMATED QUANTITIES			
ITEM	DESCRIPTION	UNIT	QUANTITY
1	8" Gate Valves	Ea.	3
2	90° Ells	Ea.	2
3	Fire Hydrants	Ea.	4
4	8" P.V.C. Water Main	L.F.	1499.14
5	8"x2" Tee	Ea.	1
6	2" Cap	Ea.	1
7	Meter Box (Remove and install only)	Ea.	1
8	2" Gate Valves	Ea.	1



WATER SPECIFICATIONS

1. Fire hydrants shall be Mueller Centurion as per City of Addison Standards, complete with gate valve.
2. The P.V.C. pipe shall be S.D.R.-18, Dimensions Class 150. The pipe shall meet or exceed requirements of A.W.W.A. C-900-75, P.V.C. pipe with cast iron outside dimensions and with rubber ring joints. P.V.C. water pipe shall be listed by Underwriters Laboratories and approved for use in Cities and Towns of Texas by the State Board of Insurance. The rigid P.V.C. pipe shall bear the Seal of Approval (or "N.S.F." mark) of the National Sanitation Foundation Testing Laboratory for potable water pipe. Provisions must be made for contraction and expansion at each joint with a rubber ring, and an integral thickened bell as part of each joint. Pipe and fittings must be assembled with a non-toxic lubricant. Pipe shall be made from approved class 12454-A or B P.V.C. Pipe Compound conforming to A.S.T.M. resin specification D-1784.
3. Joints and fittings - Fittings shall be mechanical joint or rubber ring slip joint cast iron fittings.
4. Pipe bedding material for water pipe shall be sand. Sand shall be placed 6" below the pipe, around the pipe, and 6" above the pipe.
5. A no. 12 coated copper wire or metallic tracer tape equivalent shall be placed in the trench over all water lines.
6. All construction shall be according to latest construction standards of the City of Addison, Texas.

Legend

—	Lot and R.O.W. Lines
—	Existing 8" Water Line
—	Proposed 8" Water Line
—	Abandoned R.O.W. Lines
—	Temporary Const. Esmt.
—	Permanent Easement
—	Existing San. Sewer
—	Ex. 2" Water Line

CITY OF ADDISON
APPROVED
 FOR CONSTRUCTION
 BUILDING DEPARTMENT
 10/21/79



NOTE: CONTRACTOR IS HEREBY INSTRUCTED TO EXERCISE CARE IN MEETING ALL REQUIREMENTS OF BOTH NATIONAL AND LOCAL ORDINANCES APPLICABLE TO THIS PROJECT. APPROVAL OF THESE DRAWINGS SHALL RELIEVE RESPONSIBILITY OR LIABILITY TO SUCH CODES.

BY	DATE
B.G.	10/30/79

CITY OF ADDISON
 DALLAS COUNTY, TEXAS

WATER IMPROVEMENTS
 W.O. 50042

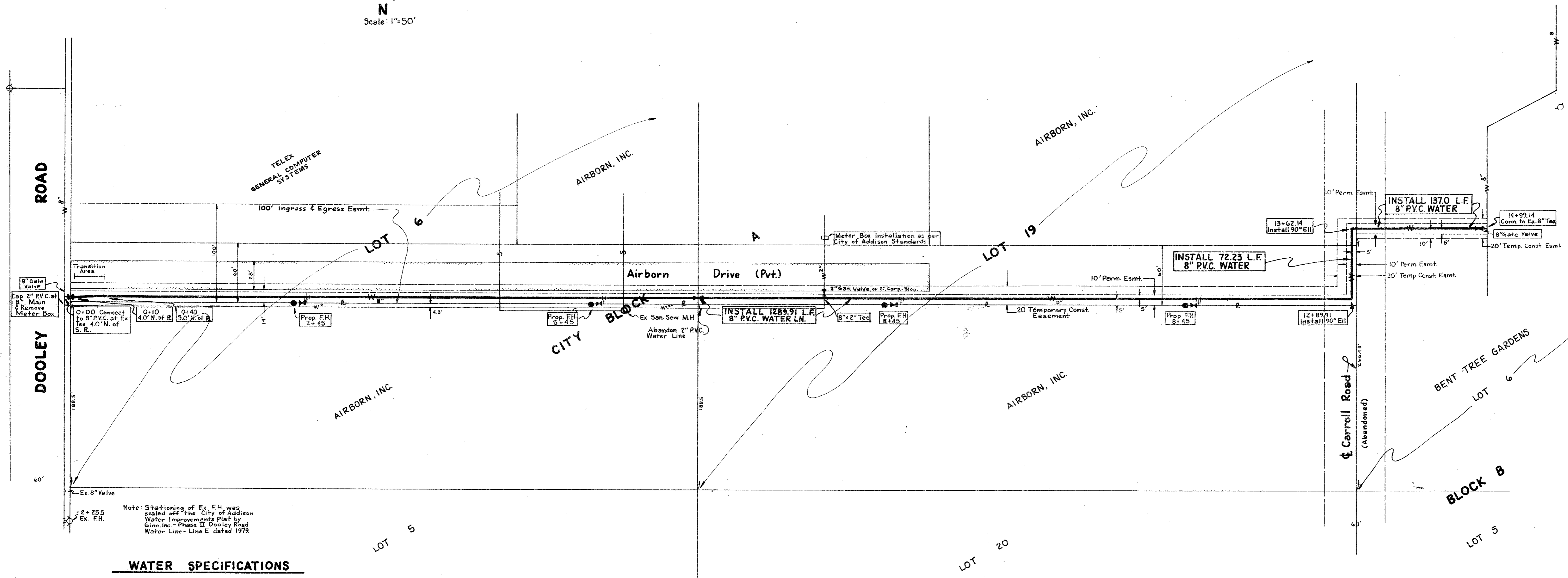
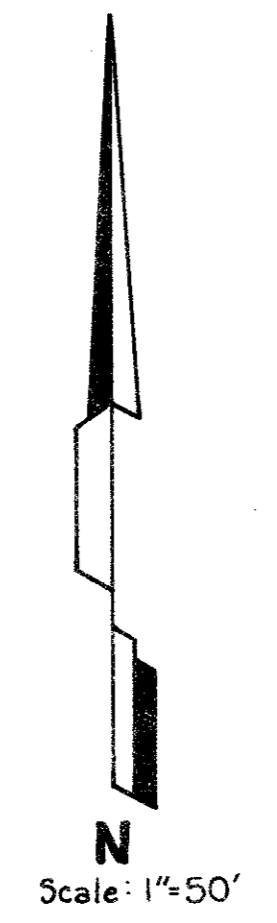
Dooley Road to Bent Tree Gardens

ASSOCIATED ENGINEERS, INC.
 4330 N. CENTRAL EXPY. DALLAS, TEXAS

Designed by: A.A.H. Scale: 1"=50'
 Drawn by: B.A.G. Date: 10/79

Sheet: 1 of 2

ESTIMATED QUANTITIES			
ITEM	DESCRIPTION	UNIT	QUANTITY
1	8" Gate Valves	Ea.	3
2	90° Ells	Ea.	2
3	Fire Hydrants	Ea.	4
4	8" P.V.C. Water Main	L.F.	1499.14
5	8"x2" Tee	Ea.	1
6	2" Cap	Ea.	1
7	Meter Box (Remove and install only)	Ea.	1
8	2" Gate Valves	Ea.	1



Note: Stationing of Ex. F.H. was scaled off the City of Addison Water Improvements Plat by Ginn, Inc. - Phase II Dooley Road Water Line - Line E dated 1979.

WATER SPECIFICATIONS

1. Fire hydrants shall be Mueller Centurion as per City of Addison Standards, complete with gate valve.
2. The P.V.C. pipe shall be S.D.R.-18, Dimensions Class 150. The pipe shall meet or exceed requirements of A.W.W.A. C-900-75, P.V.C. pipe with cast iron outside dimensions and with rubber ring joints. P.V.C. water pipe shall be listed by Underwriters Laboratories and approved for use in Cities and Towns of Texas by the State Board of Insurance. The rigid P.V.C. pipe shall bear the Seal of Approval (or "N.S.F." mark) of the National Sanitation Foundation Testing Laboratory for potable water pipe. Provisions must be made for contraction and expansion at each joint with a rubber ring, and an integral thickened bell as part of each joint. Pipe and fittings must be assembled with a non-toxic lubricant. Pipe shall be made from approved class 12454-A or B P.V.C. Pipe Compound conforming to A.S.T.M. resin specification D-1784.
3. Joints and fittings - Fittings shall be mechanical joint or rubber ring slip joint cast iron fittings.
4. Pipe bedding material for water pipe shall be sand. Sand shall be placed 6" below the pipe, around the pipe, and 6" above the pipe.
5. A no. 12 coated copper wire or metallic tracer tape equivalent shall be placed in the trench over all water lines.
6. All construction shall be according to latest construction standards of the City of Addison, Texas.

Legend

---	Lot and R.O.W. Lines
---	Existing 8" Water Line
---	Proposed 8" Water Line
---	Abandoned R.O.W. Lines
---	Temporary Const. Esmt.
---	Permanent Easement
---	Existing San Sewer
---	Ex. 2" Water Line

CITY OF ADDISON
APPROVED
FOR CONSTRUCTION
BUILDING DEPARTMENT
10/21/79



NOTE: CONTRACTOR IS HEREBY INSTRUCTED TO EXERCISE CARE IN MEETING ALL REQUIREMENTS OF BOTH NATIONAL AND LOCAL ORDINANCES APPLICABLE TO THIS PROJECT. APPROVAL OF THESE DRAWINGS SHALL RELIEVE RESPONSIBILITY OR LIABILITY TO RELIEVE RESPONSIBILITY OR LIABILITY TO SUCH CODES.

BY	DATE
B.G.	10/30/79

**CITY OF ADDISON
DALLAS COUNTY, TEXAS**

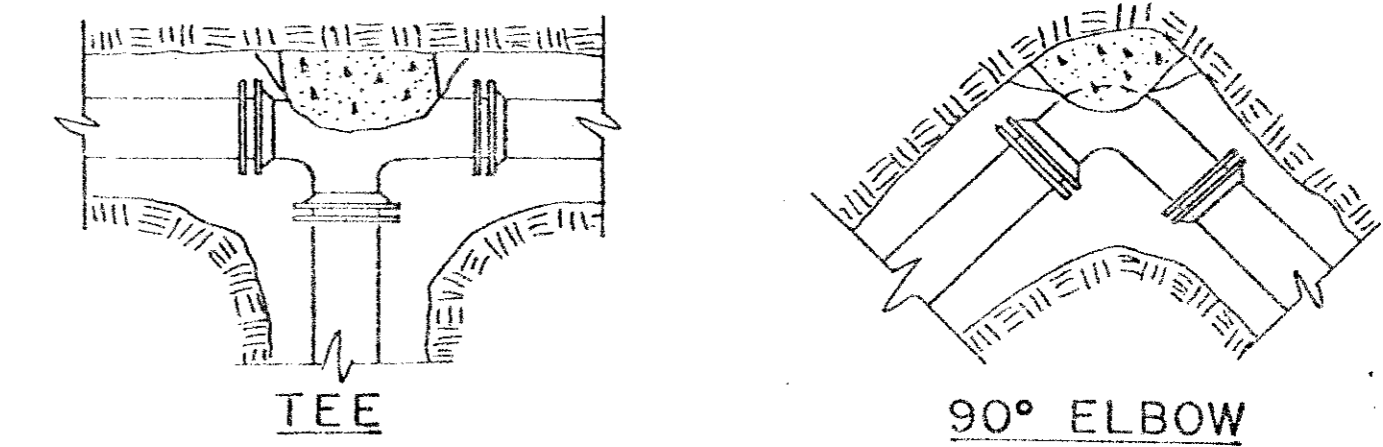
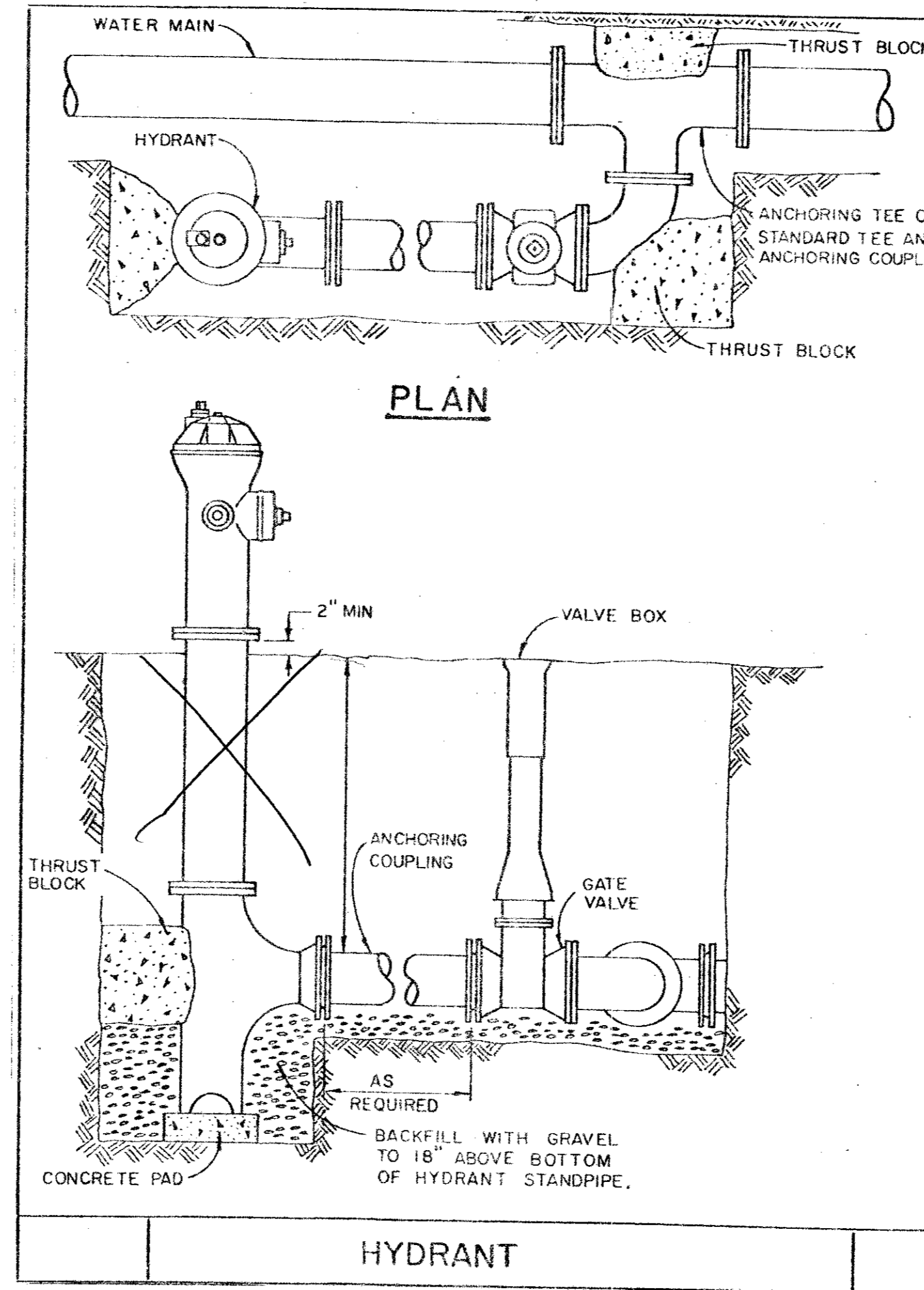
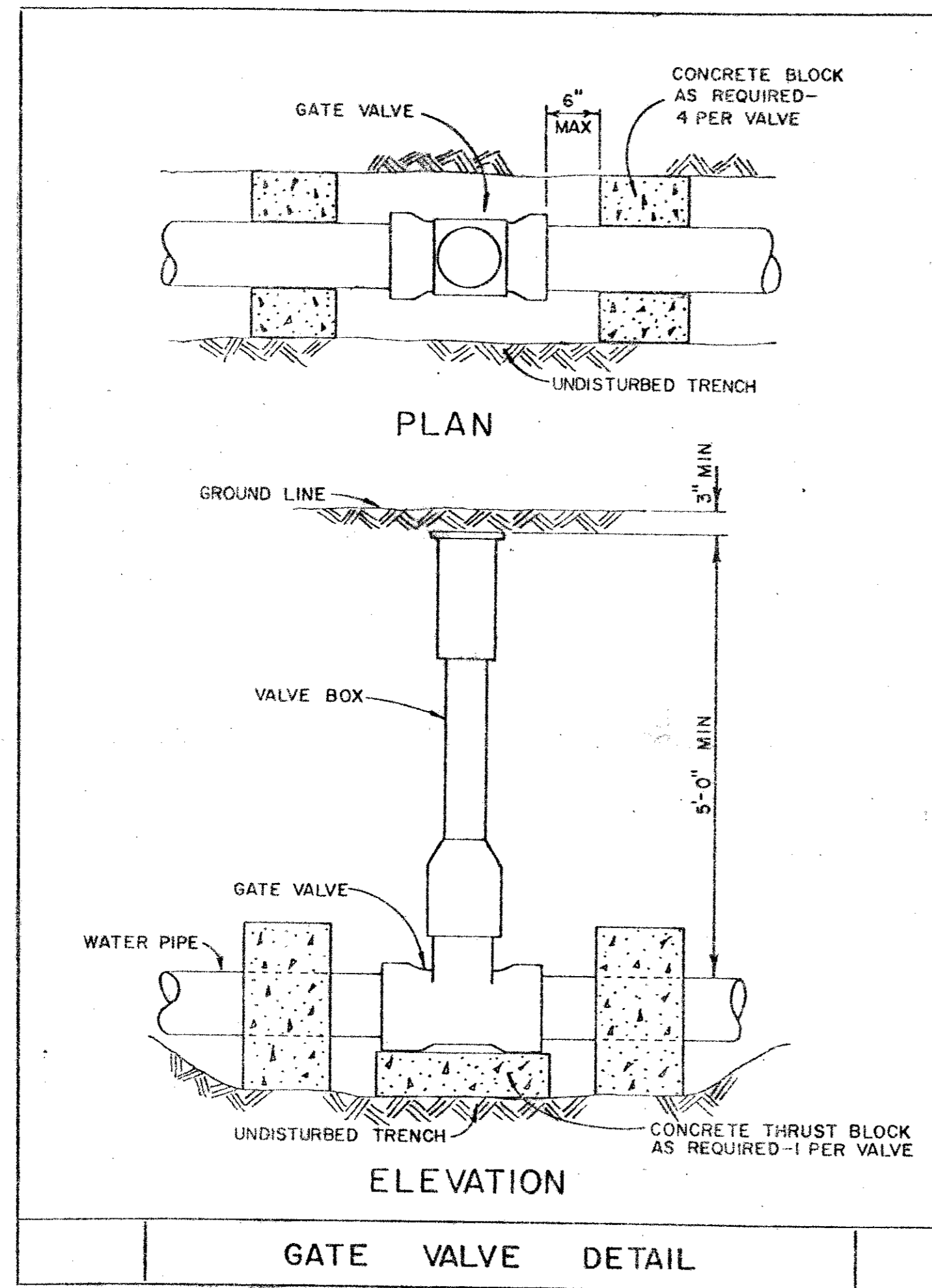
**WATER IMPROVEMENTS
W.O. 50042**

Dooley Road to Bent Tree Gardens

ASSOCIATED ENGINEERS, INC.
4330 N. CENTRAL EXPY. DALLAS, TEXAS

Designed by: A.A.H. Scale: 1"=50'
Drawn by: B.A.G. Date: 10/79

Sheet: 1 of 2



- NOTES**
1. TO DETERMINE BLOCK SIZE SEE TABLE IN SPECIFICATIONS.
 2. ALL BLOCKS TO BEAR AGAINST UNDISTURBED EARTH.
 3. ARROWS INDICATE DIRECTION OF THRUST.
 4. ALL BLOCKS TO MEET CONCRETE SPECIFICATIONS.

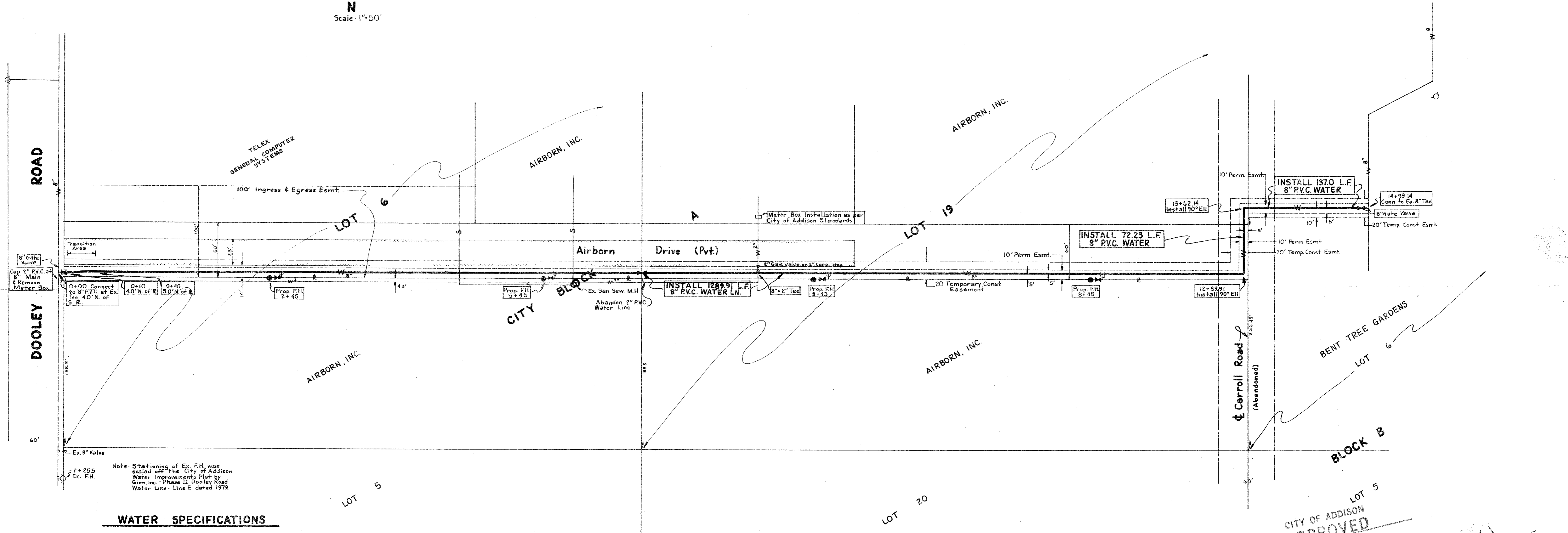
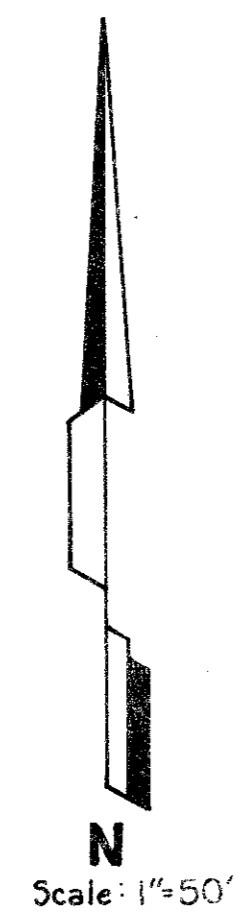
MINIMUM REQUIRED AREA OF THRUST BLOCK (SQUARE FEET)					
PIPE SIZE	TEE DEADENDS	1 1/4° BEND	22 1/2° BEND	45° BEND	90° BEND
8"	3.8	0.8	1.5	2.9	5.3

- DESIGN CRITERIA:**
- 100 P.S.I. WATER PRESSURE
 - 150 P.S.I. TEST PRESSURE
 - 2000 P.S.F. SOIL BEARING (LOOSE SAND, CLAY)
 - 2000 lb. CONCRETE



1. added F.H., change valves, added sh. 2 of 2		
NO.	REVISIONS	BY DATE
CITY OF ADDISON DALLAS COUNTY, TEXAS		
WATER SPECIFICATIONS W.O. 50042		
Dooley Road to Bent Tree Gardens		
ASSOCIATED ENGINEERS, INC. 4330 N. CENTRAL EXPY. DALLAS, TEXAS		
Designed by: A.A.H.	Scale: 1"=50'	Sheet : 2 of 2
Drawn by: B.A.G.	Date: 10/79	

ESTIMATED QUANTITIES			
ITEM	DESCRIPTION	UNIT	QUANTITY
1	8" Gate Valves	Ea.	3
2	90° Ells	Ea.	2
3	Fire Hydrants	Ea.	4
4	8" P.V.C. Water Main	L.F.	1499.14
5	8" x 2" Tee	Ea.	1
6	2" Cap	Ea.	1
7	Meter Box (Remove and install only)	Ea.	1
8	2" Gate Valves	Ea.	1



WATER SPECIFICATIONS

1. Fire hydrants shall be Mueller Centurion as per City of Addison Standards, complete with gate valve.
2. The P.V.C. pipe shall be S.D.R.-18. Dimensions Class 150. The pipe shall meet or exceed requirements of A.W.W.A. C-900-75, P.V.C. pipe with cast iron outside dimensions and with rubber ring joints. P.V.C. water pipe shall be listed by Underwriters Laboratories and approved for use in Cities and Towns of Texas by the State Board of Insurance. The rigid P.V.C. pipe shall bear the Seal of Approval (or "N.S.F." mark) of the National Sanitation Foundation Testing Laboratory for potable water pipe. Provisions must be made for contraction and expansion at each joint with a rubber ring, and an integral thickened bell as part of each joint. Pipe and fittings must be assembled with a non-toxic lubricant. Pipe shall be made from approved class 12454-A or B P.V.C. Pipe Compound conforming to A.S.T.M. resin specification D-1784.
3. Joints and fittings - Fittings shall be mechanical joint or rubber ring slip joint cast iron fittings.
4. Pipe bedding material for water pipe shall be sand. Sand shall be placed 6" below the pipe, around the pipe, and 6" above the pipe.
5. A no. 12 coated copper wire or metallic tracer tape equivalent shall be placed in the trench over all water lines.
6. All construction shall be according to latest construction standards of the City of Addison, Texas.

Legend

---	Lot and R.O.W. Lines
—w—	Existing 8" Water Line
- - -w - - -	Proposed 8" Water Line
---	Abandoned R.O.W. Lines
---	Temporary Const. Esmt.
---	Permanent Easement
-s-	Existing San. Sewer
-w-	Ex. 2" Water Line

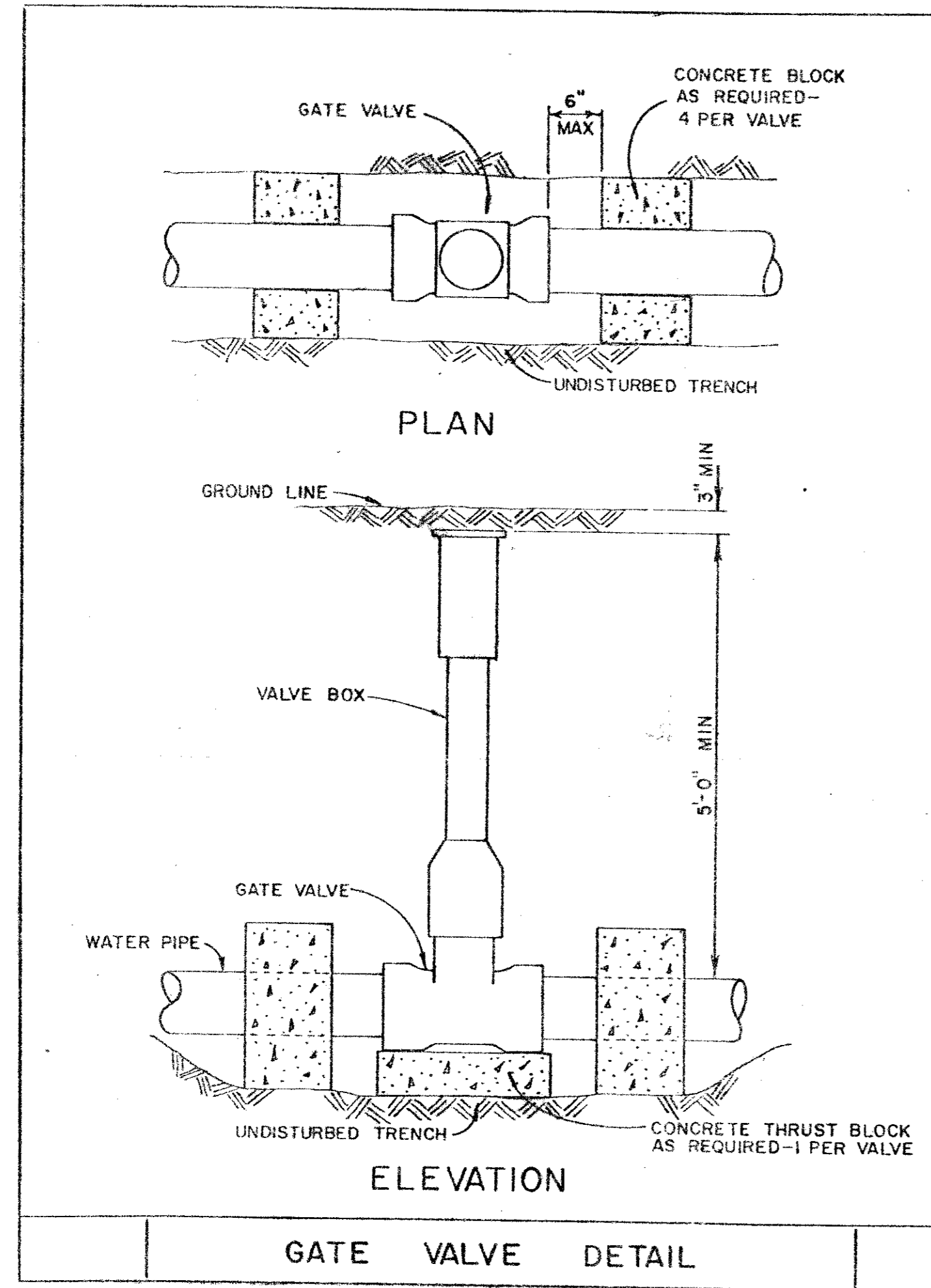
CITY OF ADDISON
APPROVED
 FOR CONSTRUCTION
 BUILDING DEPARTMENT
 DATE: 10/31/79
 NOTE: CONTRACTOR IS HEREBY INSTRUCTED TO EXERCISE CARE IN MEETING OR EXCEEDING ALL REQUIREMENTS OF BOTH NATIONAL AND LOCAL CODES AND/OR ORDINANCES APPLICABLE TO HIS WORK. APPROVAL OF THESE DRAWINGS SHALL NOT BE CONSTRUED TO RELIEVE CONTRACTOR OF HIS RESPONSIBILITY OR LIABILITY TO EACH CLIENT.

NO.	REVISIONS	BY	DATE
1	Added F.H., change valves & added sh. 2. of 2.	B.G.	10/30/79

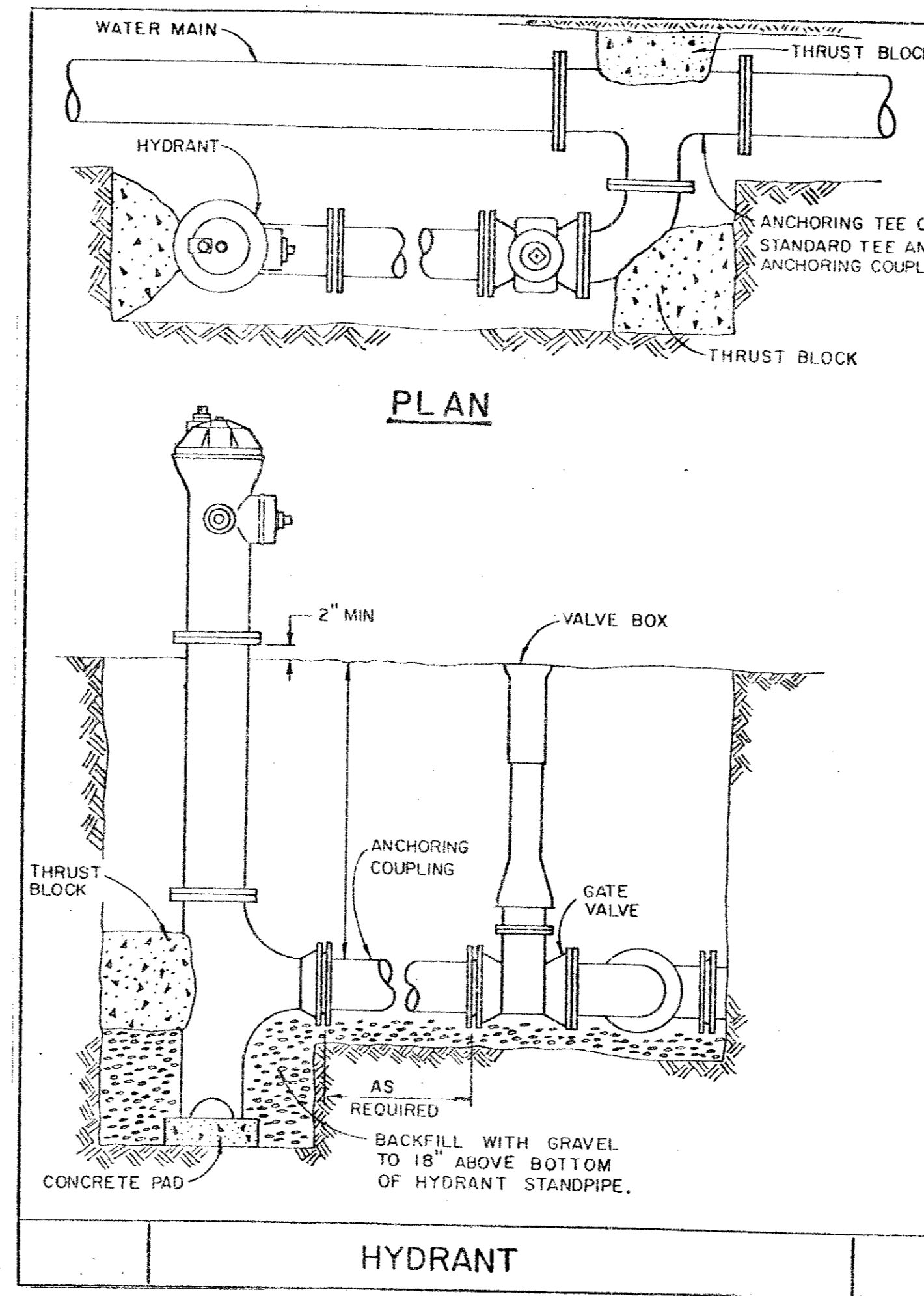
CITY OF ADDISON
DALLAS COUNTY, TEXAS

WATER IMPROVEMENTS
 W.O. 50042

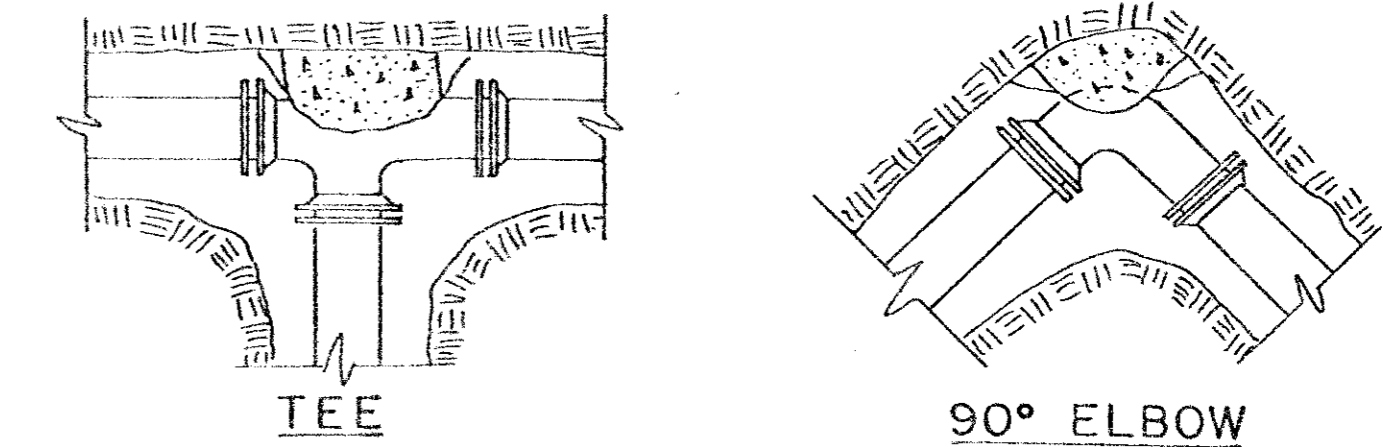
Dooley Road to Bent Tree Gardens
ASSOCIATED ENGINEERS, INC.
 4330 N. CENTRAL EXPY. DALLAS, TEXAS
 Designed by: A.A.H. Scale: 1"=50'
 Drawn by: B.A.G. Date: 10/79 Sheet: 1 of 2



GATE VALVE DETAIL



HYDRANT



NOTES

1. TO DETERMINE BLOCK SIZE SEE TABLE IN SPECIFICATIONS.
2. ALL BLOCKS TO BEAR AGAINST UNDISTURBED EARTH.
3. ARROWS INDICATE DIRECTION OF THRUST.

4. ALL BLOCKS TO MEET CONCRETE SPECIFICATIONS.

THRUST BLOCK DETAILS

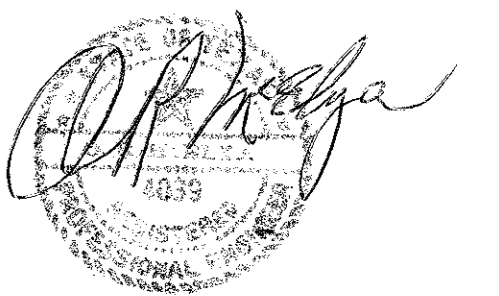
MINIMUM REQUIRED AREA OF THRUST BLOCK (SQUARE FEET)

PIPE SIZE	TEE DEADENDS	1 1/4° BEND	22 1/2° BEND	45° BEND	90° BEND
8"	3.8	0.8	1.5	2.9	5.3

DESIGN CRITERIA:

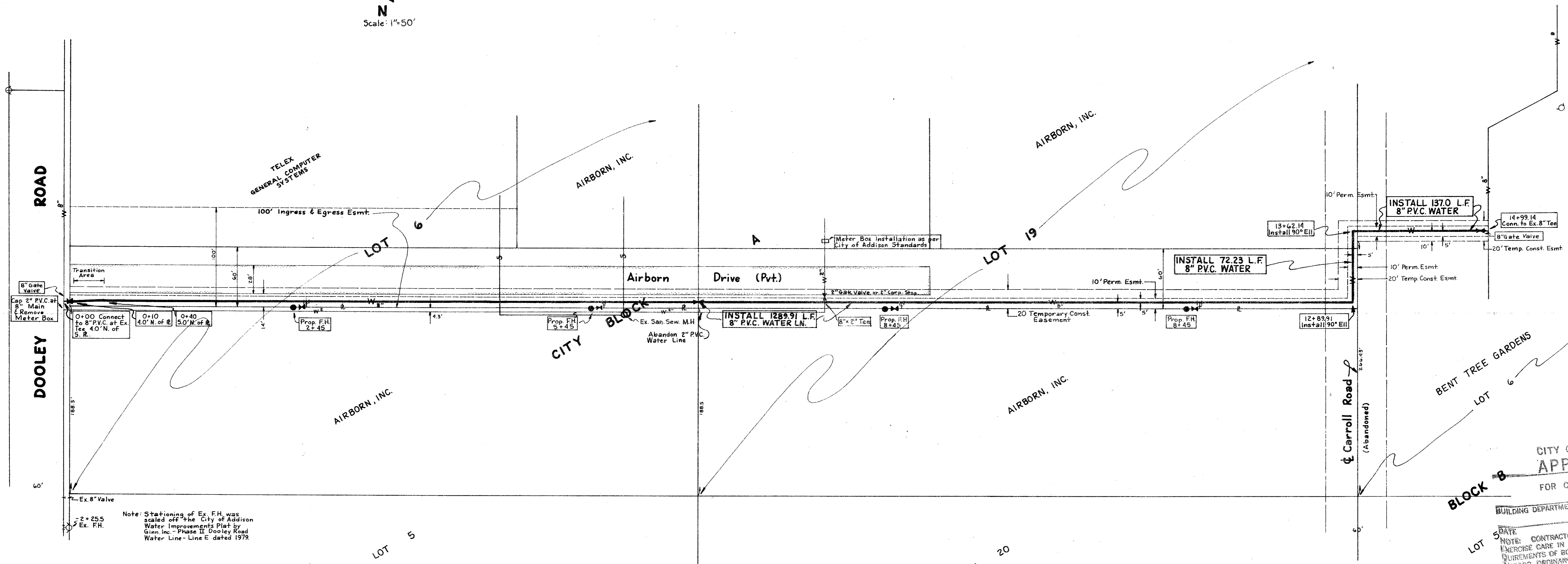
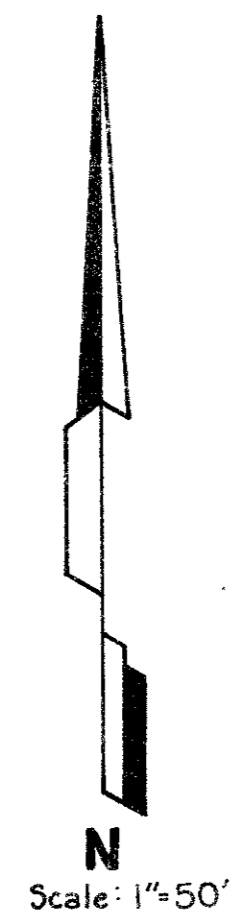
- 100 P.S.I. WATER PRESSURE
- 150 P.S.I. TEST PRESSURE
- 2000 P.S.F. SOIL BEARING (LOOSE SAND, CLAY)
- 2000 LB. CONCRETE

THRUST BLOCKS



1	added F.H., change valves, added sn 2 of 2	
NO.	REVISIONS	BY DATE
CITY OF ADDISON DALLAS COUNTY, TEXAS		
WATER SPECIFICATIONS W.O. 50042		
Dooley Road to Bent Tree Gardens		
ASSOCIATED ENGINEERS, INC. 4330 N. CENTRAL EXPY. DALLAS, TEXAS		
Designed by: A.A.H.	Scale: 1"=50'	
Drawn by: B.A.G.	Date: 10/79	Sheet: 2 of 2

ESTIMATED QUANTITIES			
ITEM	DESCRIPTION	UNIT	QUANTITY
1	8" Gate Valves	Ea.	3
2	90° Ells	Ea.	2
3	Fire Hydrants	Ea.	4
4	8" P.V.C. Water Main	L.F.	1499.14
5	8" x 2" Tee	Ea.	1
6	2" Cap	Ea.	1
7	Meter Box (Remove and install only)	Ea.	1
8	2" Gate Valves	Ea.	1



WATER SPECIFICATIONS

1. Fire hydrants shall be Mueller Centurion as per City of Addison Standards, complete with gate valve.
2. The P.V.C. pipe shall be S.D.R.-18. Dimensions Class 150. The pipe shall meet or exceed requirements of A.W.W.A. C-900-75, P.V.C. pipe with cast iron outside dimensions and with rubber ring joints. P.V.C. water pipe shall be listed by Underwriters Laboratories and approved for use in Cities and Towns of Texas by the State Board of Insurance. The rigid P.V.C. pipe shall bear the Seal of Approval (or "N.S.F." mark) of the National Sanitation Foundation Testing Laboratory for potable water pipe. Provisions must be made for contraction and expansion at each joint with a rubber ring, and an integral thickened bell as part of each joint. Pipe and fittings must be assembled with a non-toxic lubricant. Pipe shall be made from approved class 12454-A or B P.V.C. Pipe Compound conforming to A.S.T.M. resin specification D-1784.
3. Joints and fittings- Fittings shall be mechanical joint or rubber ring slip joint cast iron fittings.
4. Pipe bedding material for water pipe shall be sand. Sand shall be placed 6" below the pipe, around the pipe, and 6" above the pipe.
5. A no. 12 coated copper wire or metallic tracer tape equivalent shall be placed in the trench over all water lines.
6. All construction shall be according to latest construction standards of the City of Addison, Texas.

Legend

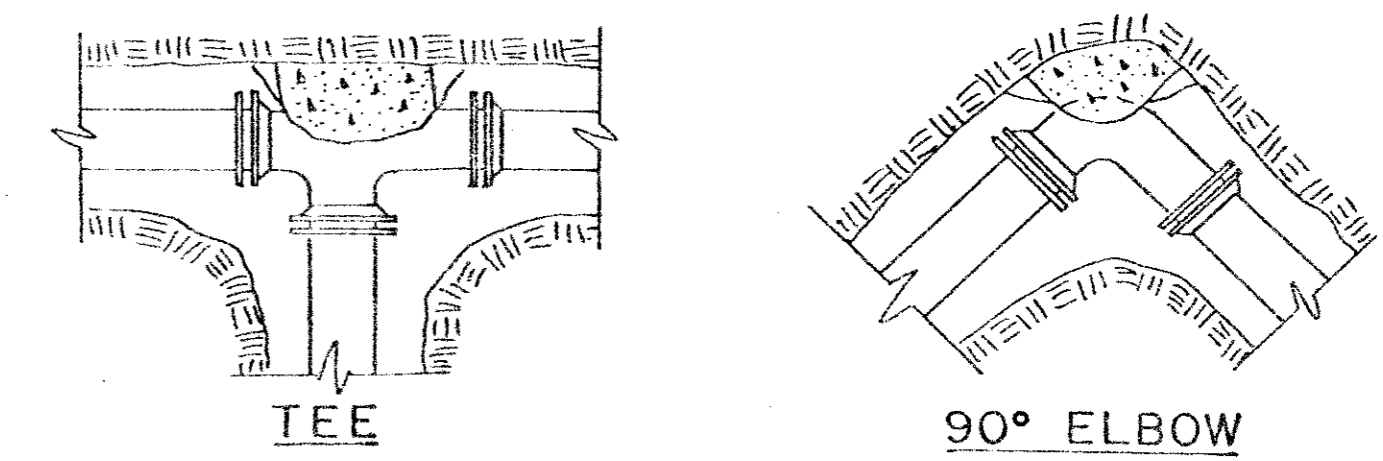
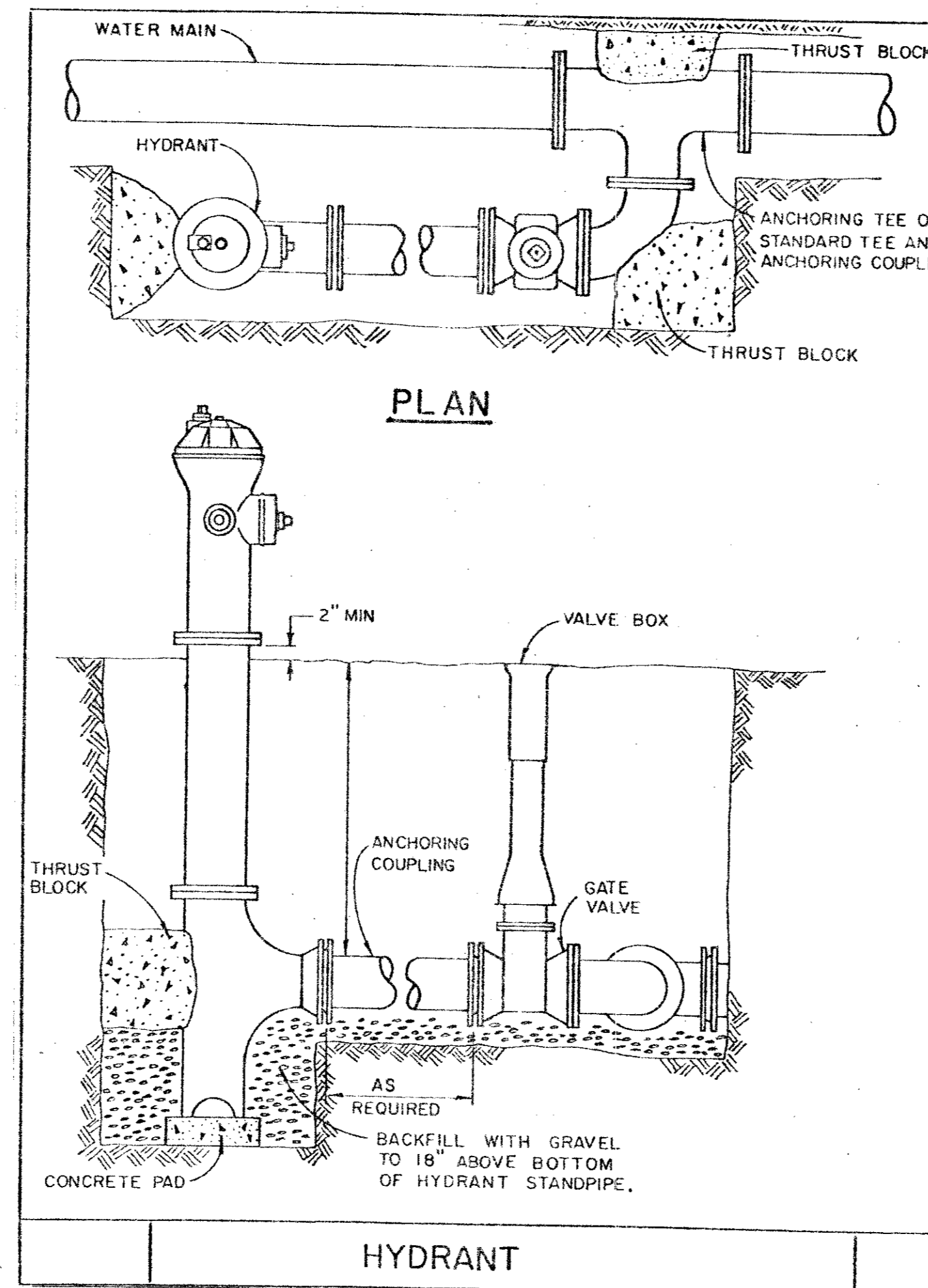
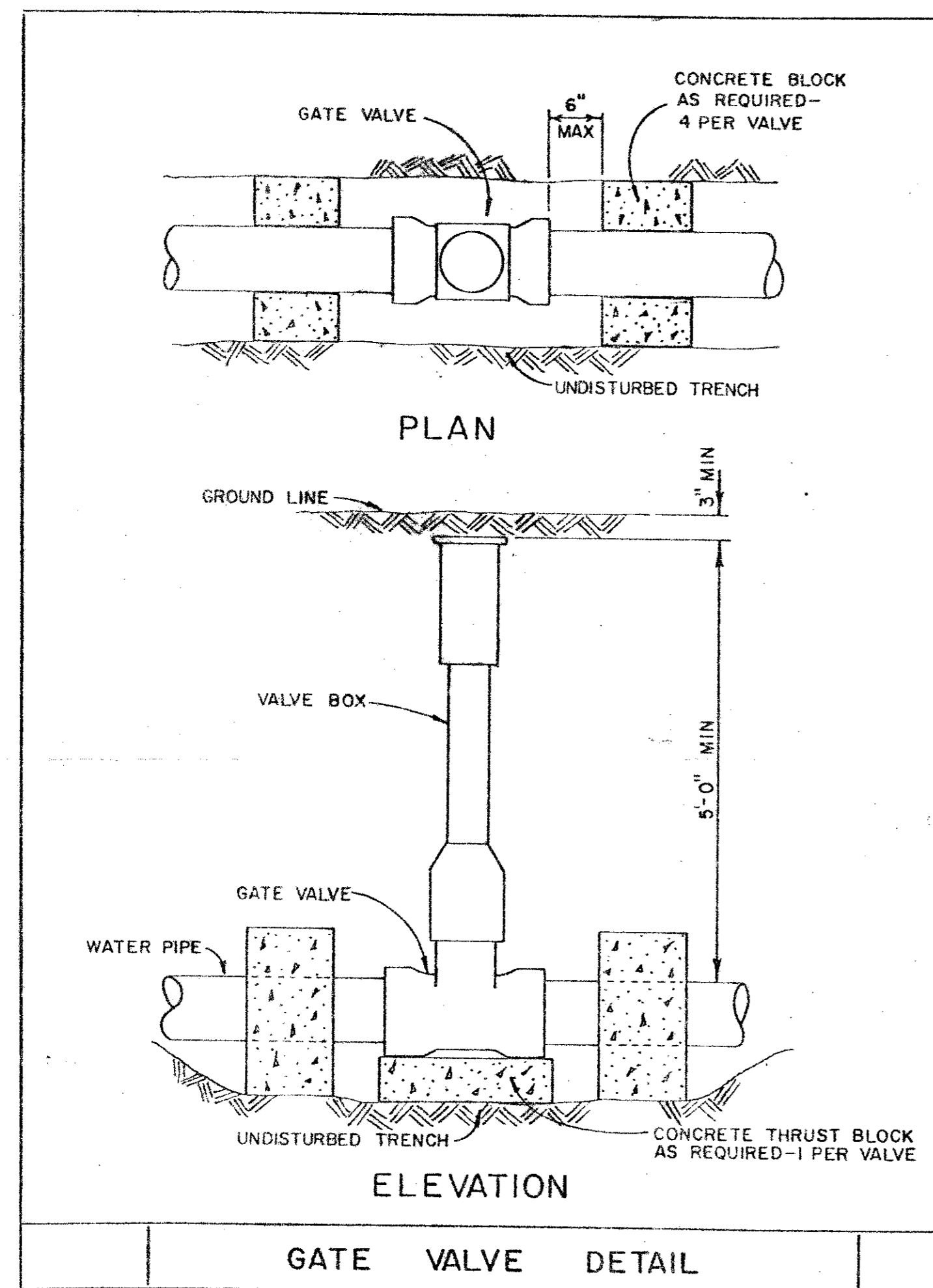
- Lot and R.O.W. Lines
- Existing 8" Water Line
- Proposed 8" Water Line
- Abandoned R.O.W. Lines
- Temporary Const. Esmt.
- Permanent Easement
- Existing San Sewer
- Ex. 2" Water Line

**CITY OF ADDISON
APPROVED
FOR CONSTRUCTION**

BUILDING DEPARTMENT

NOTE: CONTRACTOR IS HEREBY INSTRUCTED TO EXERCISE CARE IN MEETING OR EXCEEDING ALL REQUIREMENTS OF BOTH NATIONAL AND LOCAL CODES AND/OR ORDINANCES APPLICABLE TO HIS WORK. APPROVAL OF THESE DRAWINGS SHALL NOT BE CONSTRUED TO RELIEVE RESPONSIBILITY OR IMPLY VARIANCE TO SUCH CODES.

1	Added F.H., change valves & added sh. 2 of 2	B.G.	10/30/79
NO.	REVISIONS	BY	DATE
CITY OF ADDISON DALLAS COUNTY, TEXAS			
WATER IMPROVEMENTS WO. 50042			
Dooley Road to Bent Tree Gardens			
ASSOCIATED ENGINEERS, INC. 4330 N. CENTRAL EXPY. DALLAS, TEXAS			
Designed by:	A.A.H.	Scale: 1"=50'	Sheet: 1 of 2
Drawn by:	B.A.G.	Date: 10/79	



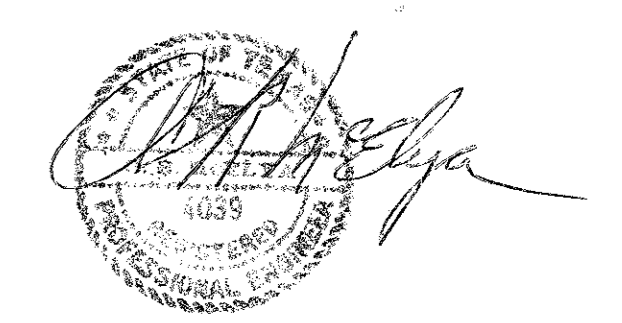
- NOTES**
1. TO DETERMINE BLOCK SIZE SEE TABLE IN SPECIFICATIONS.
 2. ALL BLOCKS TO BEAR AGAINST UNDISTURBED EARTH.
 3. ARROWS INDICATE DIRECTION OF THRUST.
 4. ALL BLOCKS TO MEET CONCRETE SPECIFICATIONS.

THRUST BLOCK DETAILS

MINIMUM REQUIRED AREA OF THRUST BLOCK (SQUARE FEET)					
PIPE SIZE	TEE DEADENDS	1 1/4° BEND	22 1/2° BEND	45° BEND	90° BEND
8"	3.8	0.8	1.5	2.9	5.3

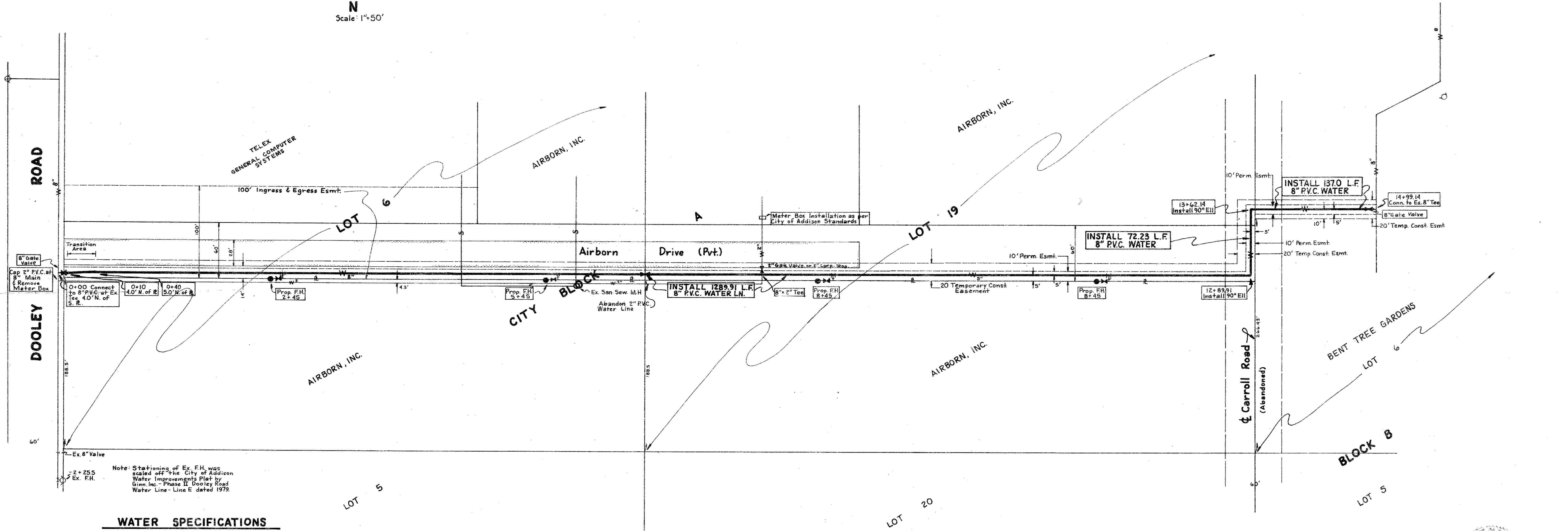
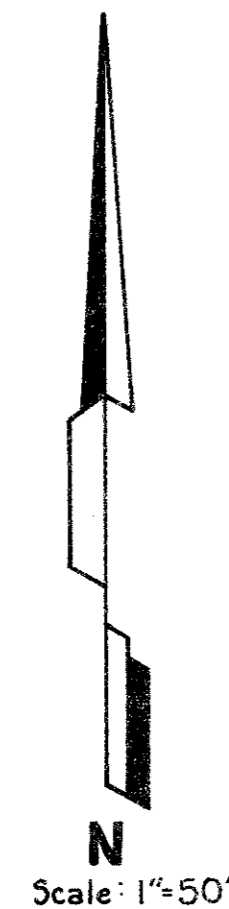
- DESIGN CRITERIA:**
- 100 P.S.I. WATER PRESSURE
 - 150 P.S.I. TEST PRESSURE
 - 2000 P.S.F. SOIL BEARING (LOOSE SAND, CLAY)
 - 2000 LB. CONCRETE

THRUST BLOCKS



1	added F.H., change valves, added sn 2 of 2	
NO.	REVISIONS	BY DATE
CITY OF ADDISON DALLAS COUNTY, TEXAS		
WATER SPECIFICATIONS W.O. 50042		
Dooley Road to Bent Tree Gardens		
ASSOCIATED ENGINEERS, INC. 4330 N. CENTRAL EXPY. DALLAS, TEXAS		
Designed by: A.A.H.	Scale: 1" = 50'	Sheet: 2 of 2
Drawn by: B.A.G.	Date: 10/79	

ESTIMATED QUANTITIES			
ITEM	DESCRIPTION	UNIT	QUANTITY
1	8" Gate Valves	Ea.	3
2	90° Ells	Ea.	2
3	Fire Hydrants	Ea.	4
4	8" P.V.C. Water Main	L.F.	1499.14
5	8" x 2" Tee	Ea.	1
6	2" Cap	Ea.	1
7	2" Meter Box (Remove and install only)	Ea.	1
8	2" Gate Valves	Ea.	1



WATER SPECIFICATIONS

1. Fire hydrants shall be Mueller Centurion as per City of Addison Standards, complete with gate valve.
2. The P.V.C. pipe shall be SDR-18. Dimensions Class 150. The pipe shall meet or exceed requirements of AWWA C-900-75, P.V.C. pipe with cast iron outside dimensions and with rubber ring joints. P.V.C. water pipe shall be listed by Underwriters Laboratories and approved for use in Cities and Towns of Texas by the State Board of Insurance. The rigid P.V.C. pipe shall bear the Seal of Approval (or "N.S.F." mark) of the National Sanitation Foundation Testing Laboratory for potable water pipe. Provisions must be made for contraction and expansion at each joint with a rubber ring, and an integral thickened bell as part of each joint. Pipe and fittings must be assembled with a non-toxic lubricant. Pipe shall be made from approved class 12454-A or B P.V.C. Pipe Compound conforming to A.S.T.M. resin specification D-1784.
3. Joints and fittings - Fittings shall be mechanical joint or rubber ring slip joint cast iron fittings.
4. Pipe bedding material for water pipe shall be sand. Sand shall be placed 6" below the pipe, around the pipe, and 6" above the pipe.
5. A no. 12 coated copper wire or metallic tracer tape equivalent shall be placed in the trench over all water lines.
6. All construction shall be according to latest construction standards of the City of Addison, Texas.

Legend

---	Lot and R.O.W. Lines
—w—	Existing 8" Water Line
—w—	Proposed 8" Water Line
---	Abandoned R.O.W. Lines
---	Temporary Const. Esmt.
---	Permanent Esmt.
-s-	Existing San Sewer
-w-	Ex. 2" Water Line

CITY OF ADDISON
APPROVED
 FOR CONSTRUCTION
D. Price
 BUILDING DEPARTMENT
 DATE: 10/31/72



NOTE: CONTRACTOR IS HEREBY INSTRUCTED TO EXERCISE CARE IN MEETING OR EXCEEDING ALL REQUIREMENTS OF BOTH NATIONAL AND/OR ORDINANCE APPROVED APPROVAL OF THESE DRAWINGS IS REQUIRED TO RELIEVE RESPONSIBILITY TO SUCH CODES.

L. L. Ladd, P.E., change valves & added sh. 2 of 2	6/6, 10/30/72
NO. 1111	REVISIONS
BY DATE	

CITY OF ADDISON
DALLAS COUNTY, TEXAS

WATER IMPROVEMENTS
 W.O. 50042

Dooley Road to Bent Tree Gardens

ASSOCIATED ENGINEERS, INC.
 4330 N. CENTRAL EXPY., DALLAS, TEXAS

Designed by: A.A.H. Scale: 1"=50'
 Drawn by: B.A.G. Date: 10/79

Sheet: 1 of 2

1	added F.H. change valves, added sh. 2 of 2	
REVISIONS		
NO.	BY	DATE
CITY OF ADDISON DALLAS COUNTY, TEXAS WATER SPECIFICATIONS W.O. 50042 Dooley Road to Bent Tree Gardens		
ASSOCIATED ENGINEERS, INC. 4330 N. CENTRAL EXPY. DALLAS, TEXAS		
Designed by: A.H.H. Scale: 1"=50'		
Drawn by: B.A.G. Date: 10/79		
Sheet: 2 of 2		



THRUST BLOCK DETAILS

THRUST BLOCKS

100 P.S.I. WATER PRESSURE
150 P.S.I. TEST PRESSURE
2000 P.S.F. SOIL BEARING (LOOSE SAND, CLAY)
2000 LB. CONCRETE

DESIGN CRITERIA:

PIPE SIZE	8"	3/8	0.8	1.5	2.9	5.3
PIPE DEADENDS	TEE	BEND	1 1/4"	22 1/2"	45° BEND	90° BEND

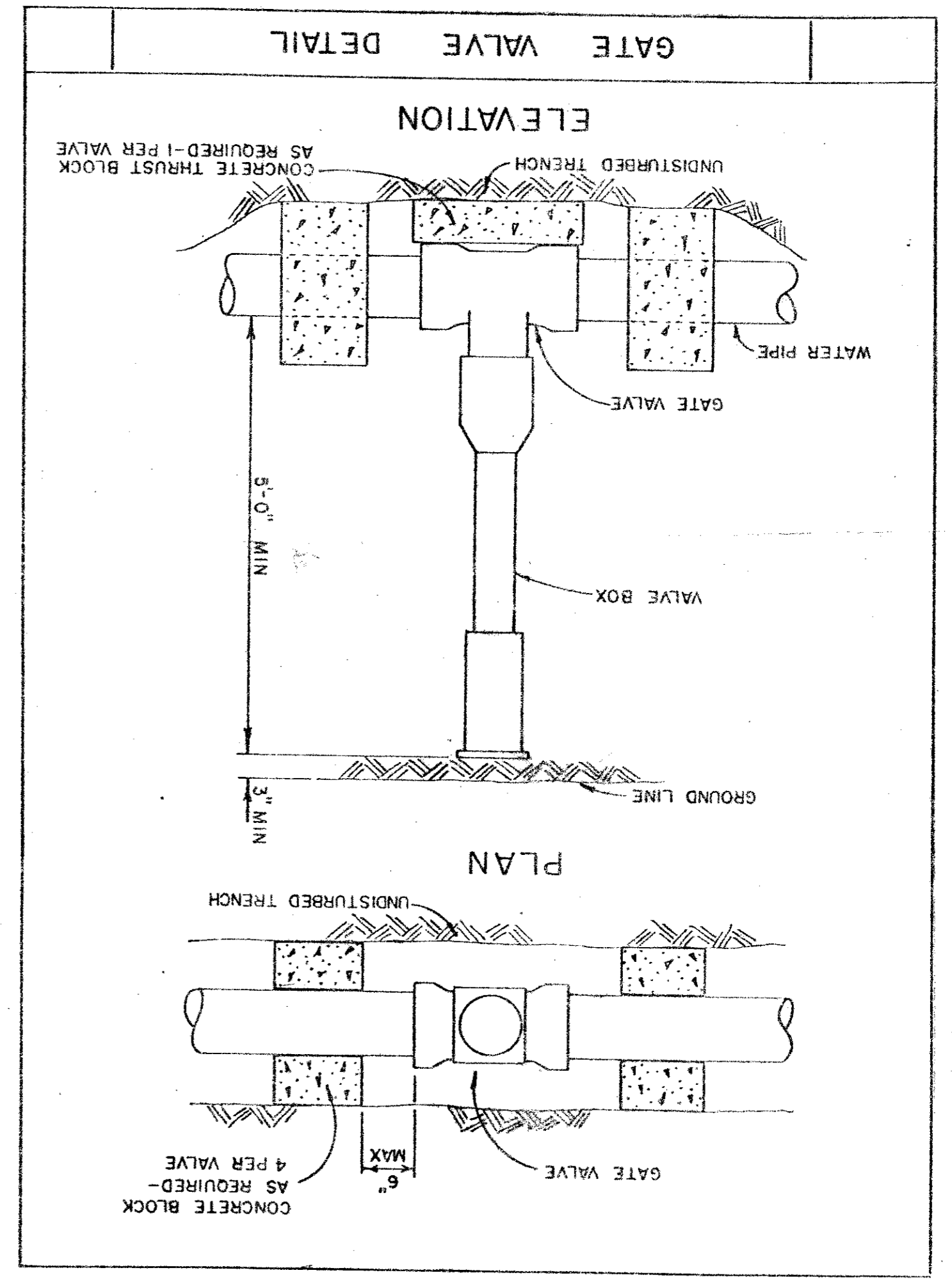
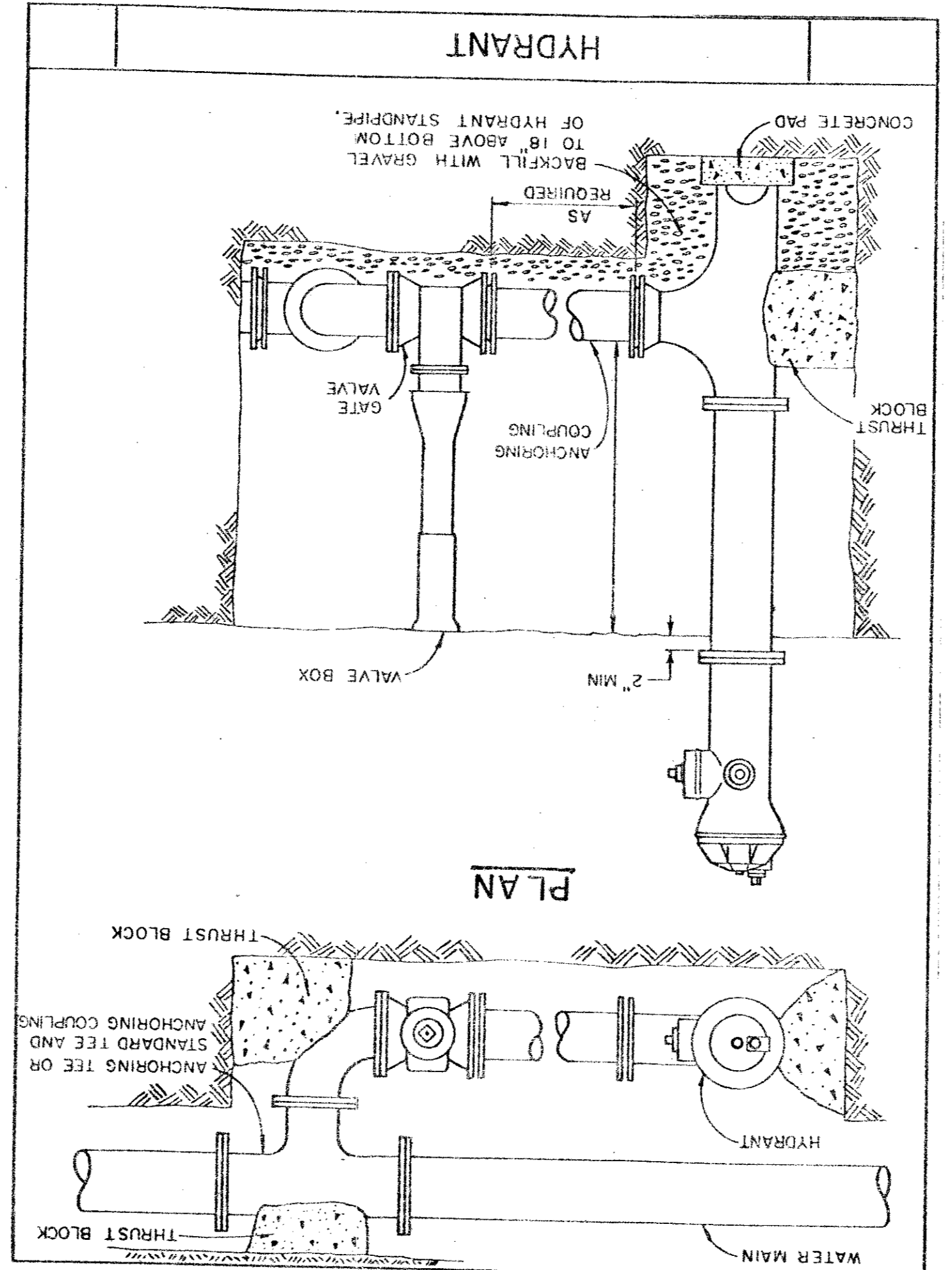
MINIMUM REQUIRED AREA OF THRUST BLOCK
(SQUARE FEET)

NOTES

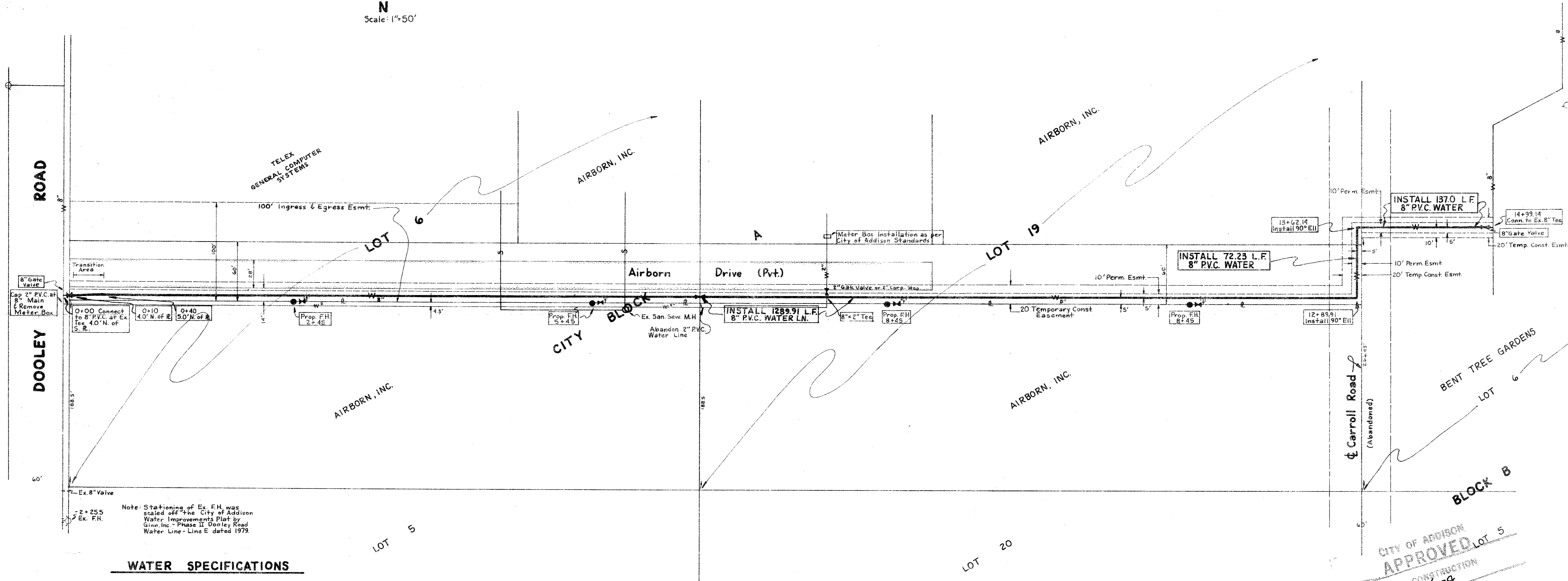
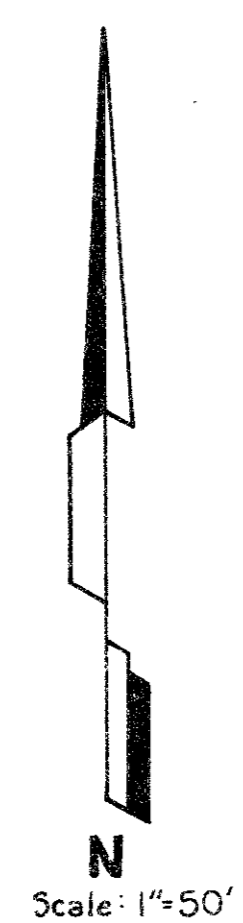
- TO DETERMINE BLOCK SIZE SEE TABLE IN SPECIFICATIONS.
- ALL BLOCKS TO BEAR AGAINST UNDISTURBED EARTH.
- ARROWS INDICATE DIRECTION OF THRUST.
- ALL BLOCKS TO MEET CONCRETE SPECIFICATIONS.

90° ELBOW

TEE



ESTIMATED QUANTITIES			
ITEM	DESCRIPTION	UNIT	QUANTITY
1	8" Gate Valves	Ea.	3
2	90° Ells	Ea.	2
3	Fire Hydrants	Ea.	4
4	8" P.V.C. Water Main	L.F.	1499.14
5	8" x 2" Tee	Ea.	1
6	2" Cap	Ea.	1
7	Meter Box (Remove and install only)	Ea.	1
8	2" Gate Valves	Ea.	1



WATER SPECIFICATIONS

- Fire hydrants shall be Mueller Centurion as per City of Addison Standards, complete with gate valve.
- The P.V.C. pipe shall be S.D.R.-18, Dimensions Class 150. The pipe shall meet or exceed requirements of A.W.W.A. C-900-75, P.V.C. pipe with cast iron outside dimensions and with rubber ring joints. P.V.C. water pipe shall be listed by Underwriters Laboratories and approved for use in Cities and Towns of Texas by the State Board of Insurance. The rigid P.V.C. pipe shall bear the Seal of Approval (or "N.S.F." mark) of the National Sanitation Foundation Testing Laboratory for potable water pipe. Provisions must be made for contraction and expansion at each joint with a rubber ring, and an integral thickened bell as part of each joint. Pipe and fittings must be assembled with a non-toxic lubricant. Pipe shall be made from approved class 12454-A or B P.V.C. Pipe Compound conforming to A.S.T.M. resin specification D-1784.
- Joints and fittings - Fittings shall be mechanical joint or rubber ring slip joint cast iron fittings.
- Pipe bedding material for water pipe shall be sand. Sand shall be placed 6" below the pipe, around the pipe, and 6" above the pipe.
- A no. 12 coated copper wire or metallic tracer tape equivalent shall be placed in the trench over all water lines.
- All construction shall be according to latest construction standards of the City of Addison, Texas.

Legend

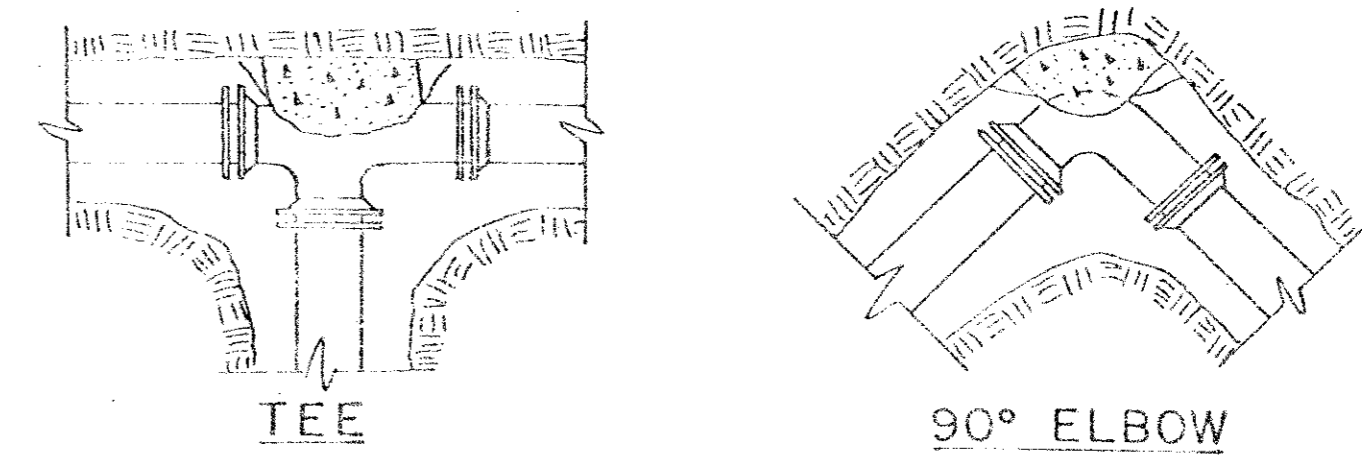
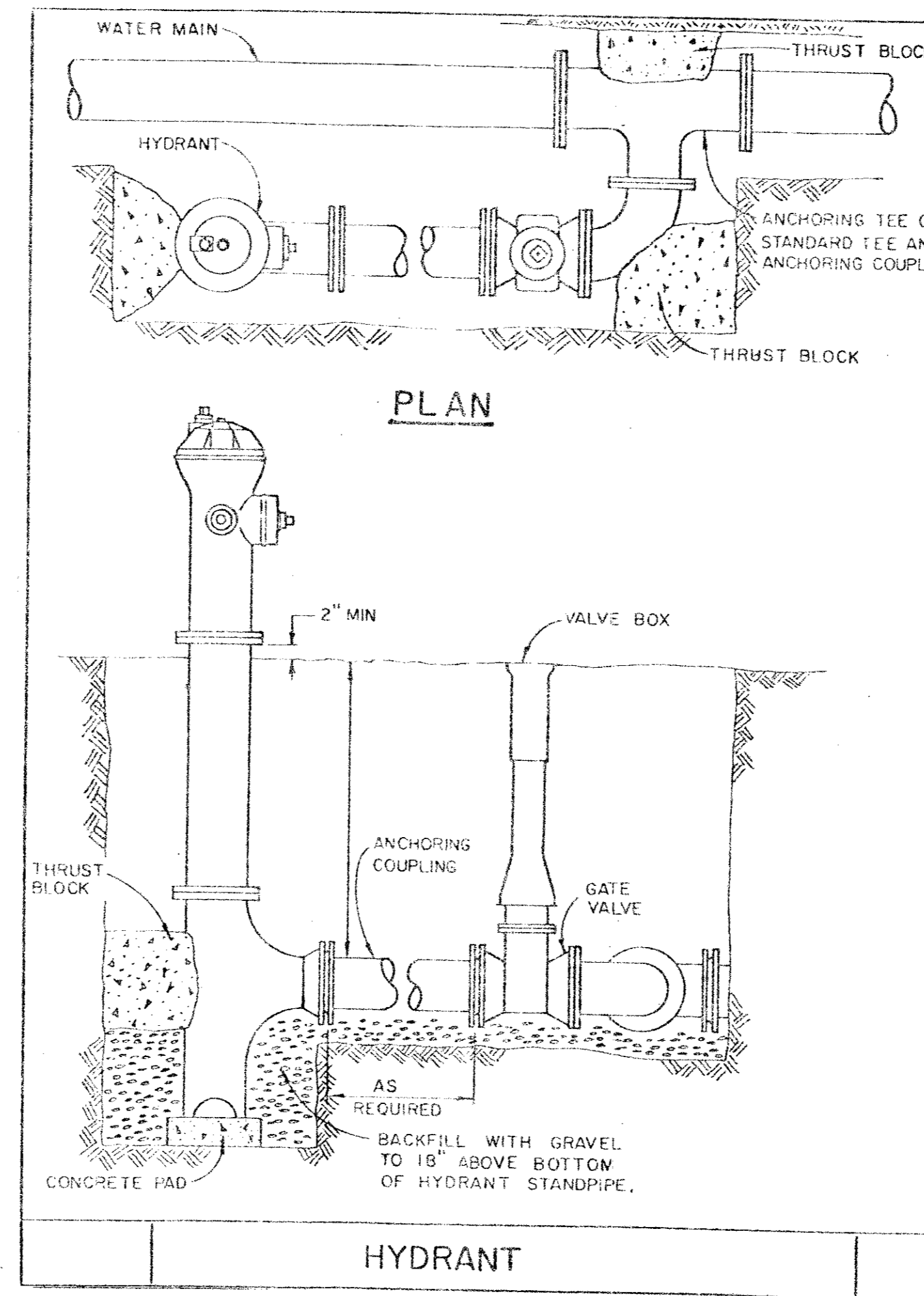
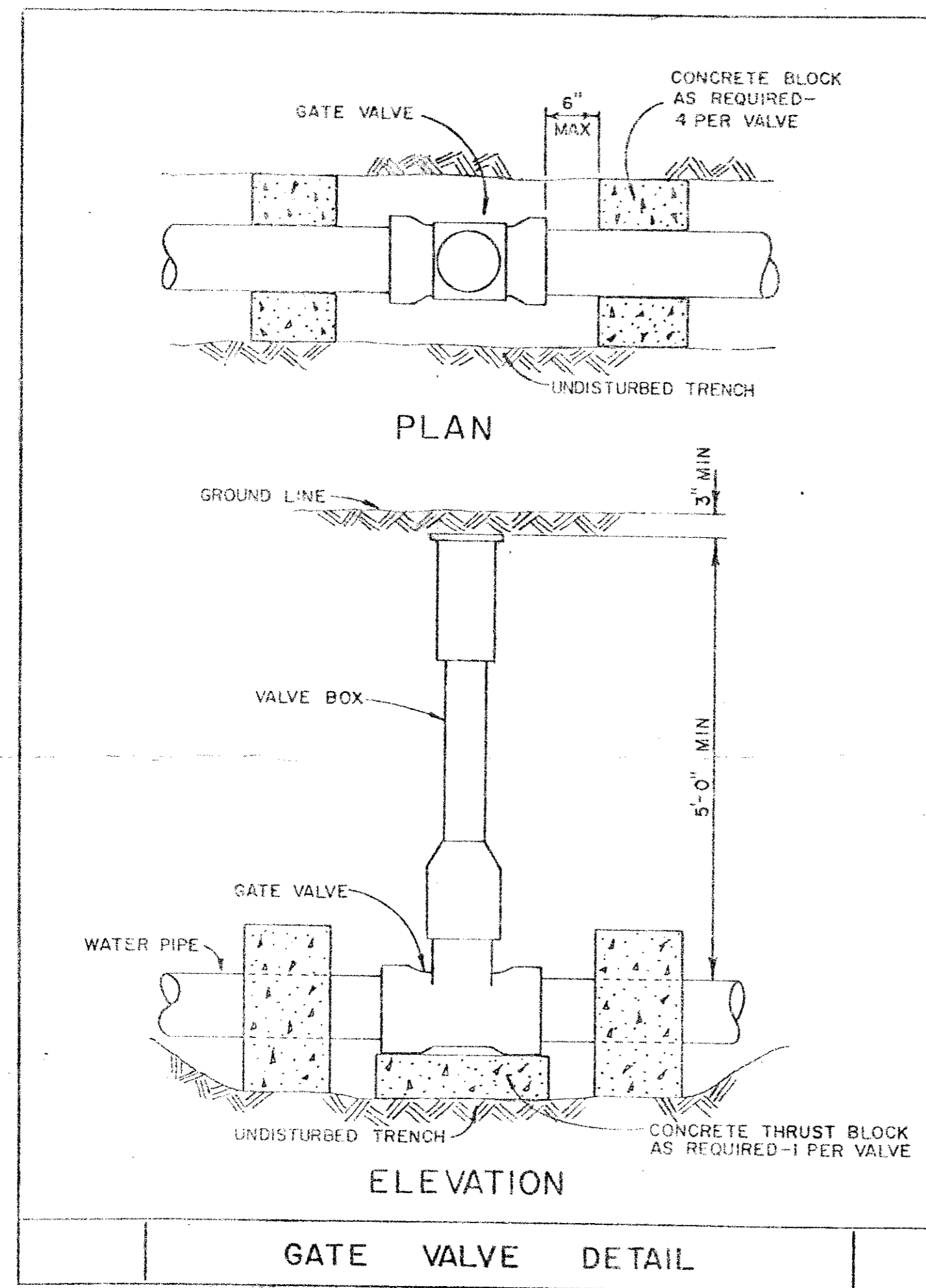
---	Lot and R.O.W. Lines
—w—	Existing 8" Water Line
-w-	Proposed 8" Water Line
---	Abandoned R.O.W. Lines
---	Temporary Const. Esmt.
---	Permanent Easement
S	Existing San Sewer
w	Ex. 2" Water Line

CITY OF ADDISON
APPROVED
 FOR CONSTRUCTION
 10/27/79
[Signature]

NOTE: CONTRACTOR IS HEREBY INSTRUCTED TO EXERCISE CARE IN MEETING OR EXCEEDING ALL REQUIREMENTS OF BOTH NATIONAL AND LOCAL CODES AND FOR CHANGES APPLICABLE TO HIS WORK. APPROVAL OF THESE DRAWINGS SHALL NOT BE CONSTRUED TO RELIEVE RESPONSIBILITY OR IMPLY WARRANTY TO SUCH COLL.

[Signature]

1	Added Ex. Change Valves & added sn. 2 of 2	B.G.	10/27/79
NO	REVISIONS	BY	DATE
CITY OF ADDISON DALLAS COUNTY, TEXAS			
WATER IMPROVEMENTS W.O. 50042			
Dooley Road to Bent Tree Gardens			
ASSOCIATED ENGINEERS, INC. 4330 N. CENTRAL EXPY., DALLAS, TEXAS			
Designed by:	A.A.H.	Scale: 1"=50'	Sheet: 1 of 2
Drawn by:	B.A.G.	Date: 10/79	



- NOTES**
1. TO DETERMINE BLOCK SIZE SEE TABLE IN SPECIFICATIONS.
 2. ALL BLOCKS TO BEAR AGAINST UNDISTURBED EARTH.
 3. ARROWS INDICATE DIRECTION OF THRUST.
 4. ALL BLOCKS TO MEET CONCRETE SPECIFICATIONS.

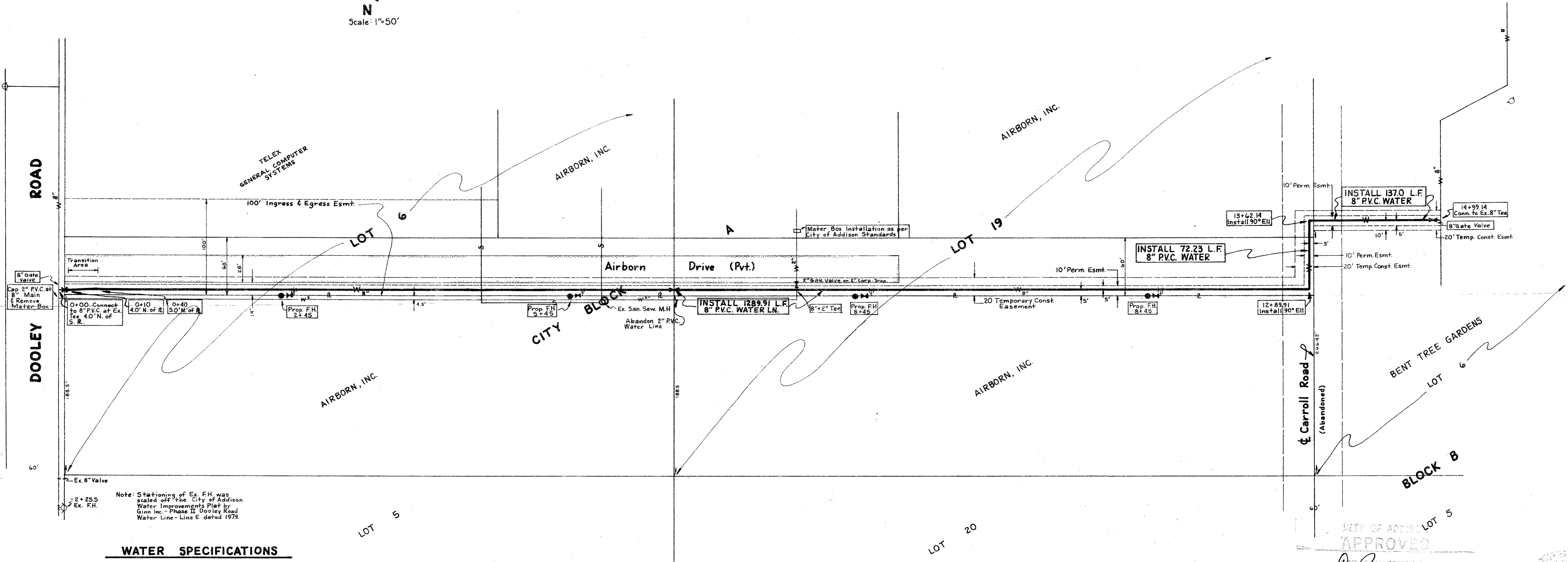
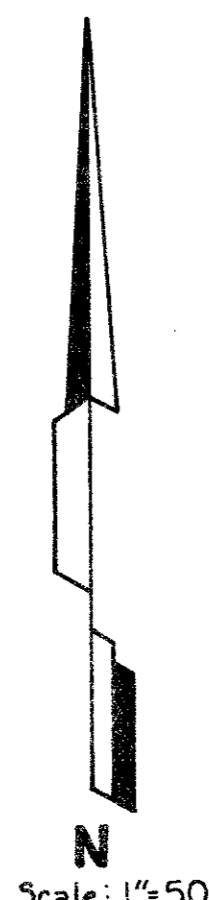
MINIMUM REQUIRED AREA OF THRUST BLOCK (SQUARE FEET)					
PIPE SIZE	TEE DEADENDS	1 1/4° BEND	22 1/2° BEND	45° BEND	90° BEND
8"	3.8	0.8	1.5	2.9	5.3

- DESIGN CRITERIA:**
- 100 P.S.I. WATER PRESSURE
 - 150 P.S.I. TEST PRESSURE
 - 2000 P.S.F. SOIL BEARING (LOOSE SAND, CLAY)
 - 2000 LB. CONCRETE

Handwritten signature

1	added F.H. change valves, added sq. 2 of 2	
NO.	REVISIONS	BY DATE
CITY OF ADDISON DALLAS COUNTY, TEXAS		
WATER SPECIFICATIONS W.O. 50042		
Dooley Road to Bent Tree Gardens		
ASSOCIATED ENGINEERS, INC. 4330 N. CENTRAL EXPY. DALLAS, TEXAS		
Designed by: A.A.H. State 11-20		Sheet: 2 of 2
Drawn by: B.A.G. Date: 10/79		

ESTIMATED QUANTITIES			
ITEM	DESCRIPTION	UNIT	QUANTITY
1	8" Gate Valves	Ea.	3
2	90° Ells	Ea.	2
3	Fire Hydrants	Ea.	4
4	8" P.V.C. Water Main	L.F.	1499.14
5	8"x2" Tee	Ea.	1
6	2" Cap	Ea.	1
7	Meter Box (Remove and install only)	Ea.	1
8	2" Gate Valves	Ea.	1



WATER SPECIFICATIONS

1. Fire hydrants shall be Mueller Centurion as per City of Addison Standards, complete with gate valve.
2. The P.V.C. pipe shall be S.D.R.-18, Dimensions Class 150. The pipe shall meet or exceed requirements of AWWA C-900-75. P.V.C. pipe with cast iron outside dimensions and with rubber ring joints. P.V.C. water pipe shall be listed by Underwriters Laboratories and approved for use in Cities and Towns of Texas by the State Board of Insurance. The rigid P.V.C. pipe shall bear the Seal of Approval (or "N.S.F." mark) of the National Sanitation Foundation Testing Laboratory for potable water pipe. Provisions must be made for contraction and expansion at each joint with a rubber ring, and an integral thickened bell as part of each joint. Pipe and fittings must be assembled with a non-toxic lubricant. Pipe shall be made from approved class 12454-A or B P.V.C. Pipe Compound conforming to A.S.T.M. resin specification D-1784.
3. Joints and fittings- Fittings shall be mechanical joint or rubber ring slip joint cast iron fittings.
4. Pipe bedding material for water pipe shall be sand. Sand shall be placed 6" below the pipe, around the pipe, and 6" above the pipe.
5. A no. 12 coated copper wire or metallic tracer tape equivalent shall be placed in the trench over all water lines.
6. All construction shall be according to latest construction standards of the City of Addison, Texas.

Legend

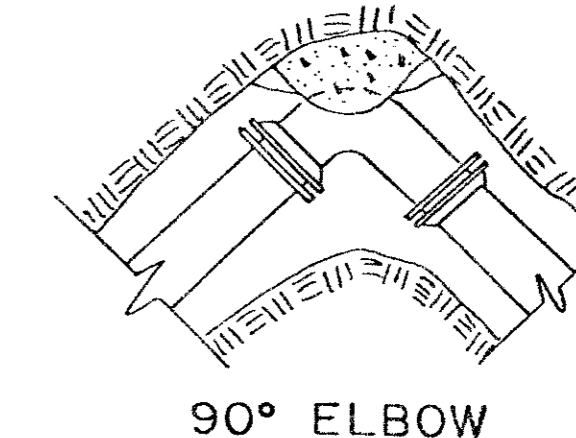
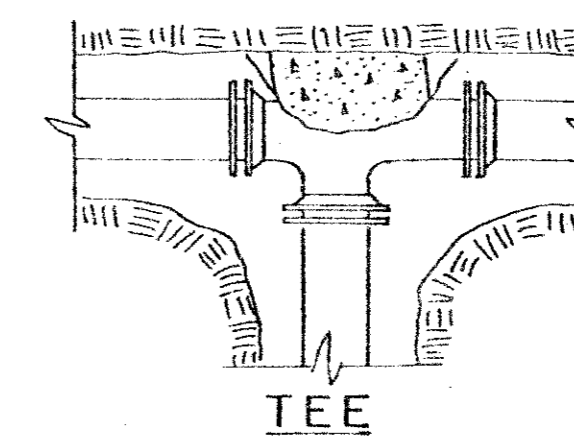
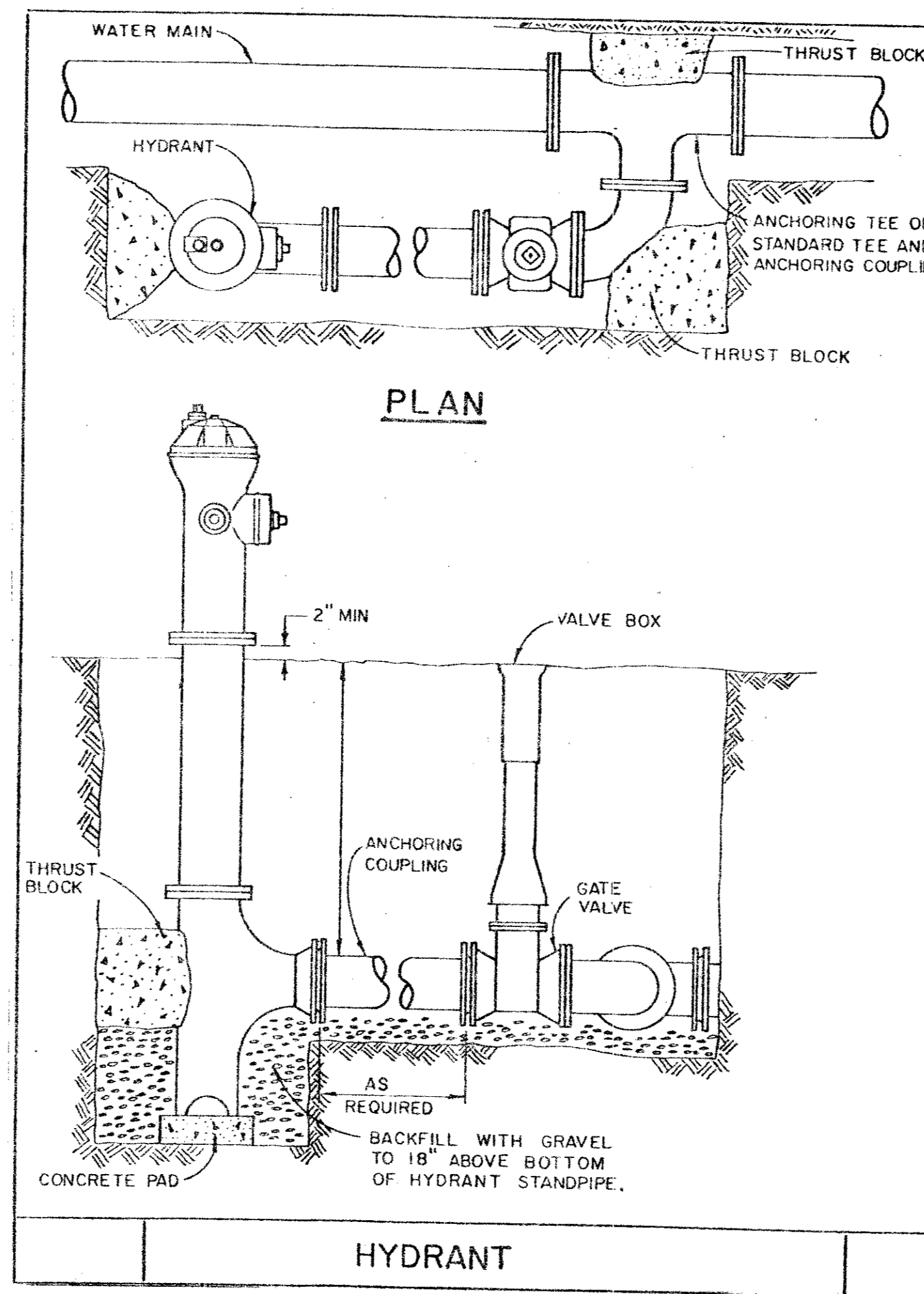
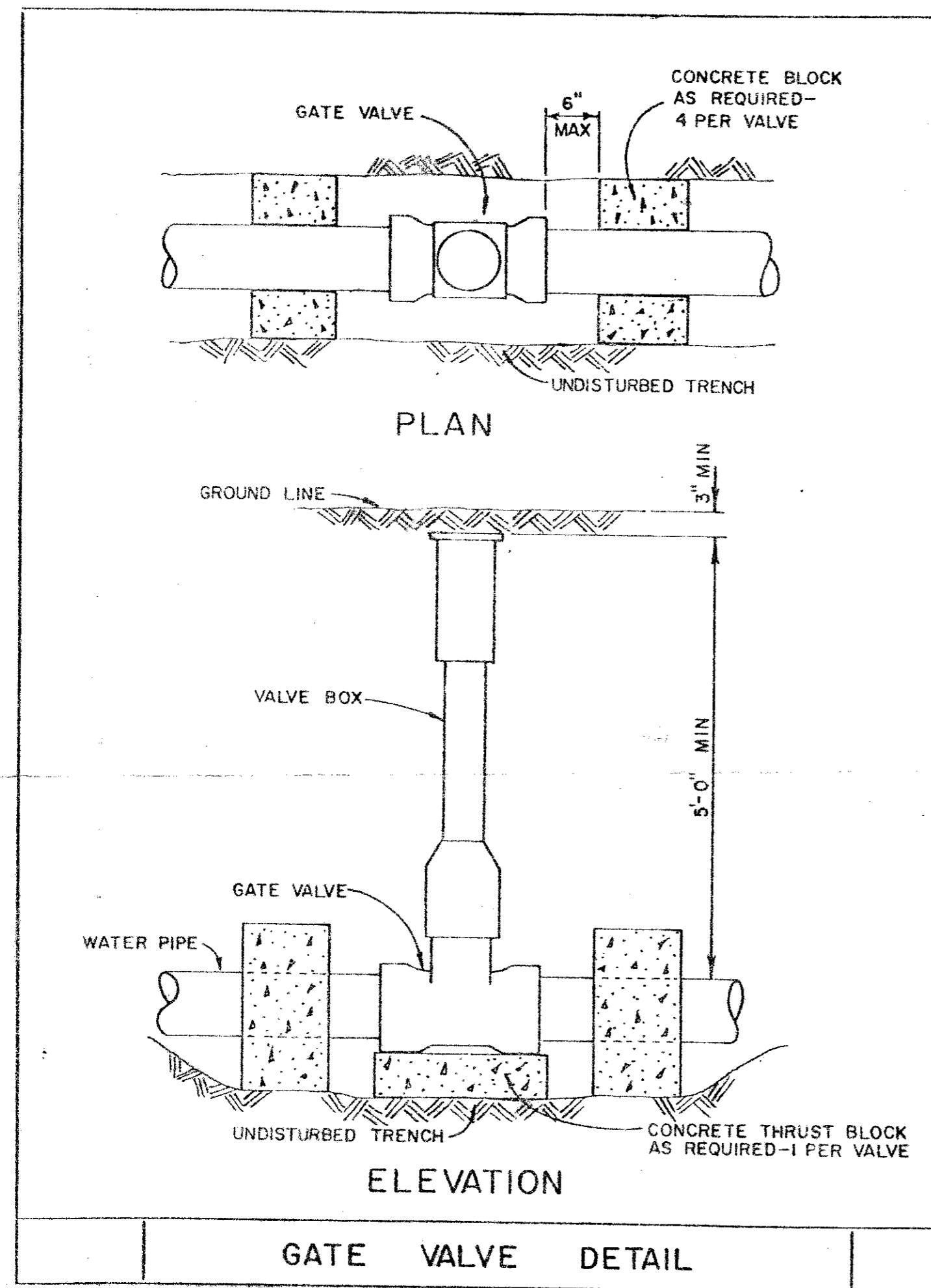
—	Lot and R.O.W. Lines
—	Existing 8" Water Line
—	Proposed 8" Water Line
—	Abandoned R.O.W. Lines
—	Temporary Const. Esmt.
—	Permanent Easement
—	Existing San Sewer
—	Ex. 2" Water Line

CITY OF ADDISON
APPROVED
 BUILDING DEPARTMENT
 DATE: 10/31/79



NOTE: CONTRACTOR IS HEREBY INSTRUCTED TO EXERCISE CARE IN OBTAINING ALL NECESSARY PERMITS, ORDINANCES, AND LOCAL CODES APPLICABLE TO THIS WORK. APPROVAL OF THESE DRAWINGS SHALL NOT BE CONSIDERED TO INCLUDE RESPONSIBILITY OR OBLIGATION TO THE USER.

1	added F.H., change valves & added sh. 2 of 2	B.G.	10/30/79
NO	REVISIONS	BY	DATE
CITY OF ADDISON DALLAS COUNTY, TEXAS			
WATER IMPROVEMENTS W.O. 50042			
Dooley Road to Bent Tree Gardens			
ASSOCIATED ENGINEERS, INC. 4330 N. CENTRAL EXPY. DALLAS, TEXAS			
Designed by:	A.A.H.	Scale: 1"=50'	Sheet: 1 of 2
Drawn by:	B.A.G.	Date: 10/79	



NOTES

1. TO DETERMINE BLOCK SIZE SEE TABLE IN SPECIFICATIONS.
2. ALL BLOCKS TO BEAR AGAINST UNDISTURBED EARTH.
3. ARROWS INDICATE DIRECTION OF THRUST.

4. ALL BLOCKS TO MEET CONCRETE SPECIFICATIONS.

THRUST BLOCK DETAILS

MINIMUM REQUIRED AREA OF THRUST BLOCK (SQUARE FEET)					
PIPE SIZE	TEE DEADENDS	1 1/4° BEND	22 1/2° BEND	45° BEND	90° BEND
8"	3.8	0.8	1.5	2.9	5.3

DESIGN CRITERIA:

- 100 P.S.I. WATER PRESSURE
- 150 P.S.I. TEST PRESSURE
- 2000 P.S.F. SOIL BEARING (LOOSE SAND, CLAY)
- 2000 lb. CONCRETE

THRUST BLOCKS

added F.H. change valves, added sh. 2 of 2		
NO.	REVISIONS	BY DATE
CITY OF ADDISON DALLAS COUNTY, TEXAS		
WATER SPECIFICATIONS W.O. 50042		
Dooley Road to Bent Tree Gardens		
ASSOCIATED ENGINEERS, INC. 4330 N. CENTRAL EXPY. DALLAS, TEXAS		
Designed by: A.A.H.	Scale: 1"=50'	Sheet: 2 of 2
Drawn by: B.A.G.	Date: 10/79	