

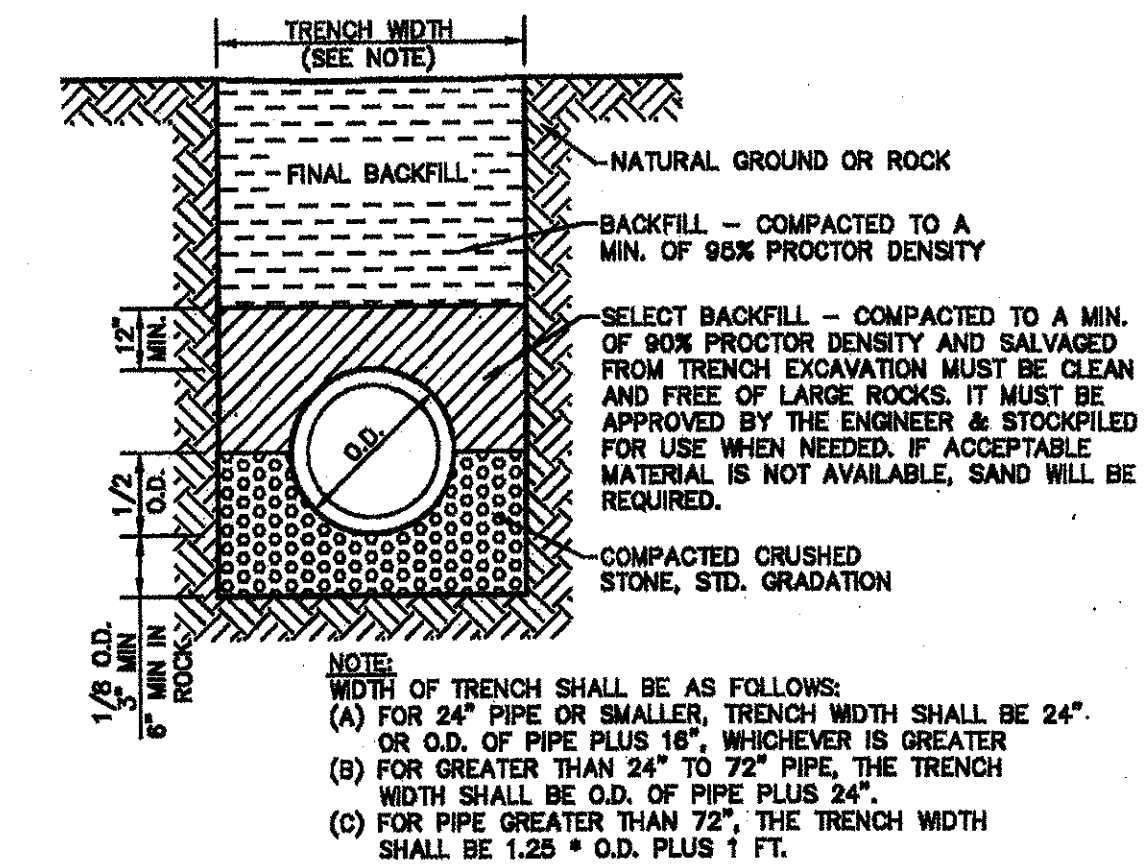
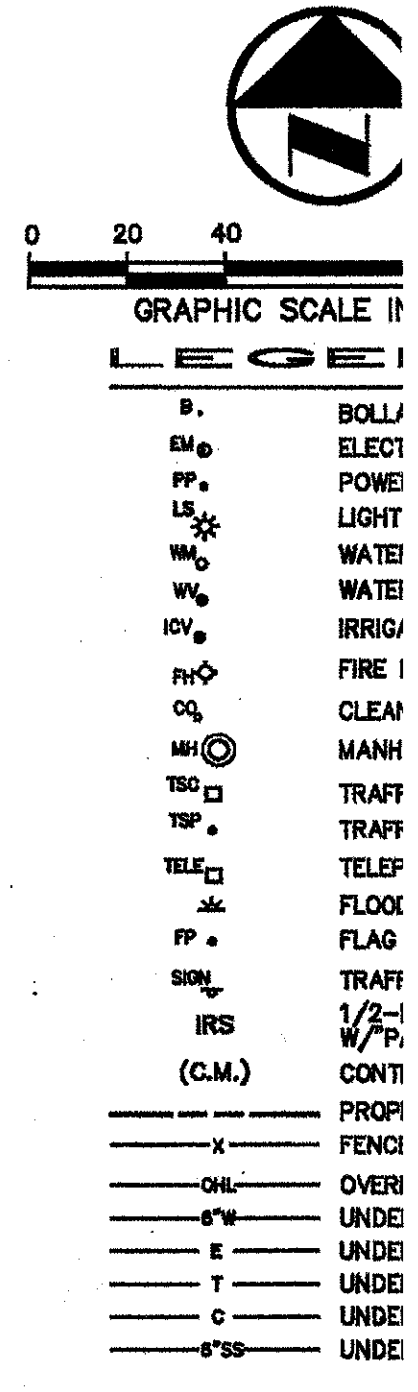
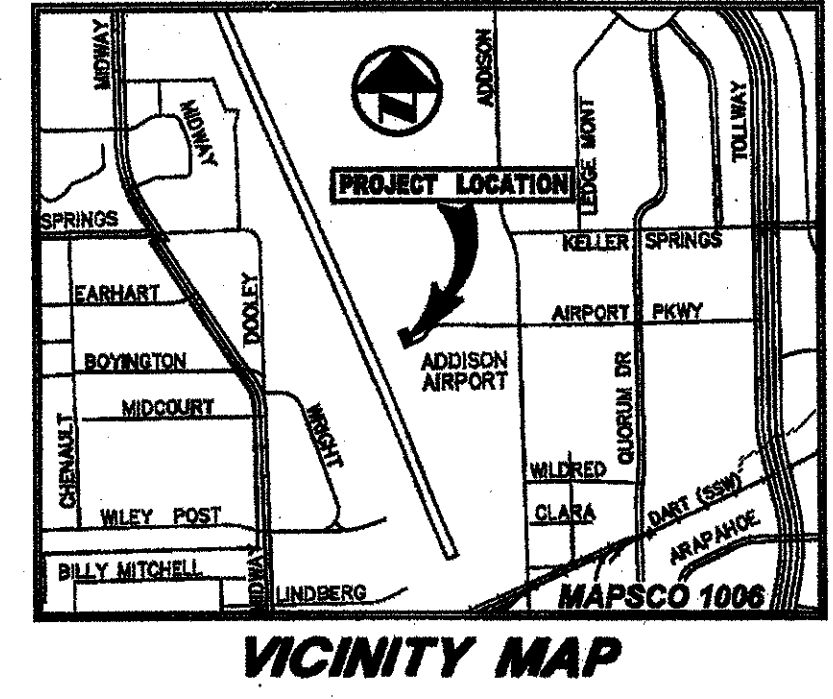
B11-3

4601 Airport Pkwy
FRITO LAY HANGAR 9/03
AS-BUILT Dwg + Utility

CONTROL POINTS

CONTROL POINT	NORTHING	EASTING	ELEVATION	DESCRIPTION
1	7,036,888.078	2,480,245.682	636.30	AA-1
2	7,041,501.126	2,480,144.730	641.92	AA-2
3	7,037,202.352	2,480,632.193	635.03	AA-3
4	7,035,857.888	2,479,444.822	632.41	AA-4
5	7,036,508.863	2,478,102.163	637.40	AA-5
6	7,043,849.891	2,477,497.489	652.28	AA-6
7	7,038,305.132	2,476,531.057	640.77	AS2785
8	7,040,772.188	2,478,253.153	633.02	AH7848
9	7,043,042.482	2,477,532.021	637.40	AH7852
10	7,038,354.488	2,478,875.925	642.02	CS1508

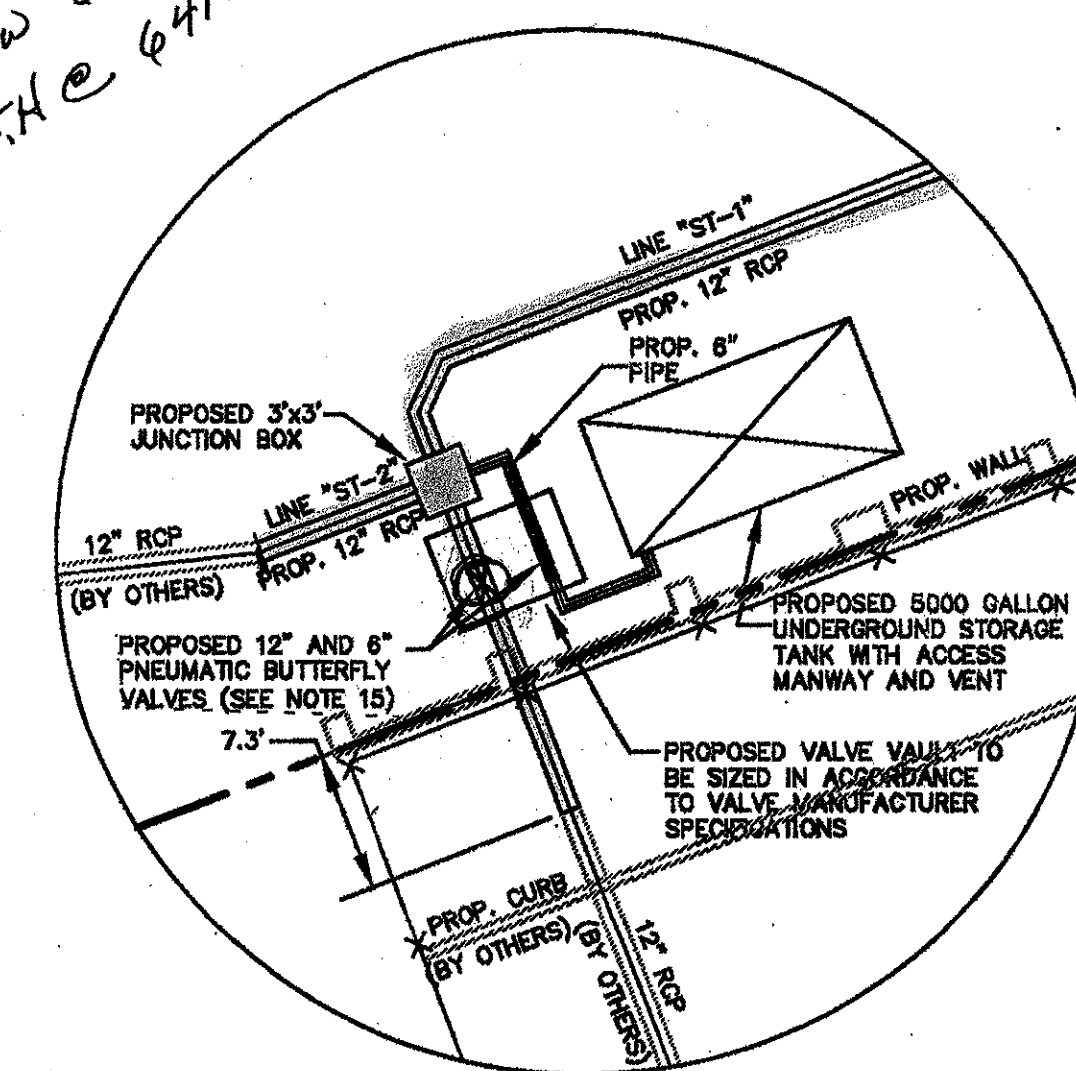
100 YR STORM SEWER CALCULATIONS									
STATION	SIZE	Q (cfs)	V (ft/s)	V ² /2g	S _f	D (ft)	K _s	V ₀ (ft/s)	Q ₀ (cfs)
LINE "ST-1"									
SLOPE @ 0.30%									
STA 0+00 TO STA 0+16.83	12"	8.87	1.95	11.28	1.98	0.0820	---	---	---
STA 0+16.83 TO STA 0+24.16	12"	4.17	1.95	5.31	0.44	0.0137	---	---	---
STA 0+24.16 TO STA 0+36.50	12"	2.09	1.95	2.68	0.11	0.0034	0.91	2.78	---
LINE "ST-2"									
SLOPE @ 1.24%									
STA 0+00 TO STA 0+08.89	12"	4.70	3.97	3.88	0.58	0.0174	---	---	---
LINE "ST-3"									
SLOPE @ 0.70%									
STA 0+00 TO STA 0+39.32	18"	8.59	8.78	4.66	0.37	0.0087	1.20	5.67	---
STA 0+39.32 TO STA 0+52.22	18"	7.54	8.78	4.27	0.28	0.0052	1.07	5.59	---
LINE "ST-4"									
SLOPE @ 0.30%									
STA 0+00 TO STA 0+22.10	18"	4.78	5.78	2.70	0.11	0.0021	1.04	3.84	---
STA 0+22.10 TO STA 0+35.74	18"	2.85	5.78	1.61	0.04	0.0007	0.75	3.25	---



CLASS III REINFORCED CONCRETE PIPE EMBEDMENT
NOT TO SCALE

GRADING AND DRAINAGE GENERAL NOTES

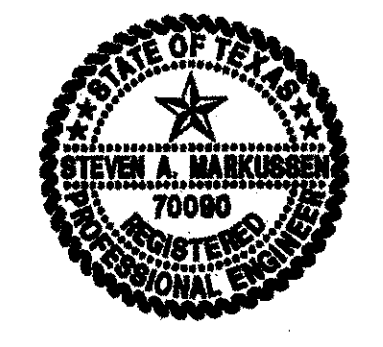
- REFER TO GEOTECHNICAL REPORT FOR REQUIREMENTS REGARDING FILL COMPACTION AND M...
- UNLESS NOTED, ALL FILL IS TO BE COMPACTED TO A MINIMUM OF 90% STANDARD PROCTOR...
- SIDEWALKS AND ACCESSIBLE ROUTES SHALL HAVE A SLOPE NO GREATER THAN 2% AND A GREATER THAN 2% UNLESS NOTED OTHERWISE.
- GRADING OF ALL HANDICAPPED SPACES AND ROUTES TO CONFORM TO STATE, LOCAL AND...
- UNLESS NOTED, STORM DRAIN LINES MAY BE OF THE FOLLOWING MATERIALS:
A. RCP C-78, CLASS III
B. ADS N-12
C. HANGCOR H-Q



VIEW 'A'
SCALE: 1"=10'

DRAINAGE AREA TABLE						
DRAINAGE AREA No.	AREA (acres)	C	To (minutes)	100 YEAR STORM FREQUENCY (inches/hour)	Q (cfs)	COMMENTS
DA #1	0.80	0.90	10	100 YEAR	5.74	4.70 DRAINS TO GRATE INLET (BY OTHERS)
DA #2	0.53	0.90	10	100 YEAR	5.74	4.17 DRAINS TO PROP. GRATE INLETS
DA #3	0.73	0.90	10	100 YEAR	5.74	5.74 DRAINS TO PROP. CURB INLET
DA #4	0.38	0.90	10	100 YEAR	5.74	2.85 DRAINS TO PROP. CURB INLET

AS BUILT



THE SEAL APPEARING ON THIS DOCUMENT WAS AUTHORIZED BY STEVEN A. MARKUSSEN, P.E. 70080 ON 10/13/2003. ALTERATION OF A SEALED DOCUMENT WITHOUT PROPER NOTIFICATION TO THE RESPONSIBLE ENGINEER IS AN OFFENSE UNDER THE TEXAS ENGINEERING PRACTICE ACT.

NO.	DATE	REVISION

Pacheco Koch Const
6350 N CENTRAL EXPWY SUITE 1000 DAL

DRAINAGE P
FRITO LAY (FLNA) CORPO
AIRPORT PARKW
ADDISON AIRP
TOWN OF ADDISON

DESIGN	DRAWN	DATE	SCALE	NOTES
BJM	DRI	SEPT 2003	1"=40'	

BRAD MOSS - 10/23/03
M. VINCIGUERRA - 10/23/03 - 2007 DWG/VISOR - 03-2007 DWDWG

208 CA-1
B11-3