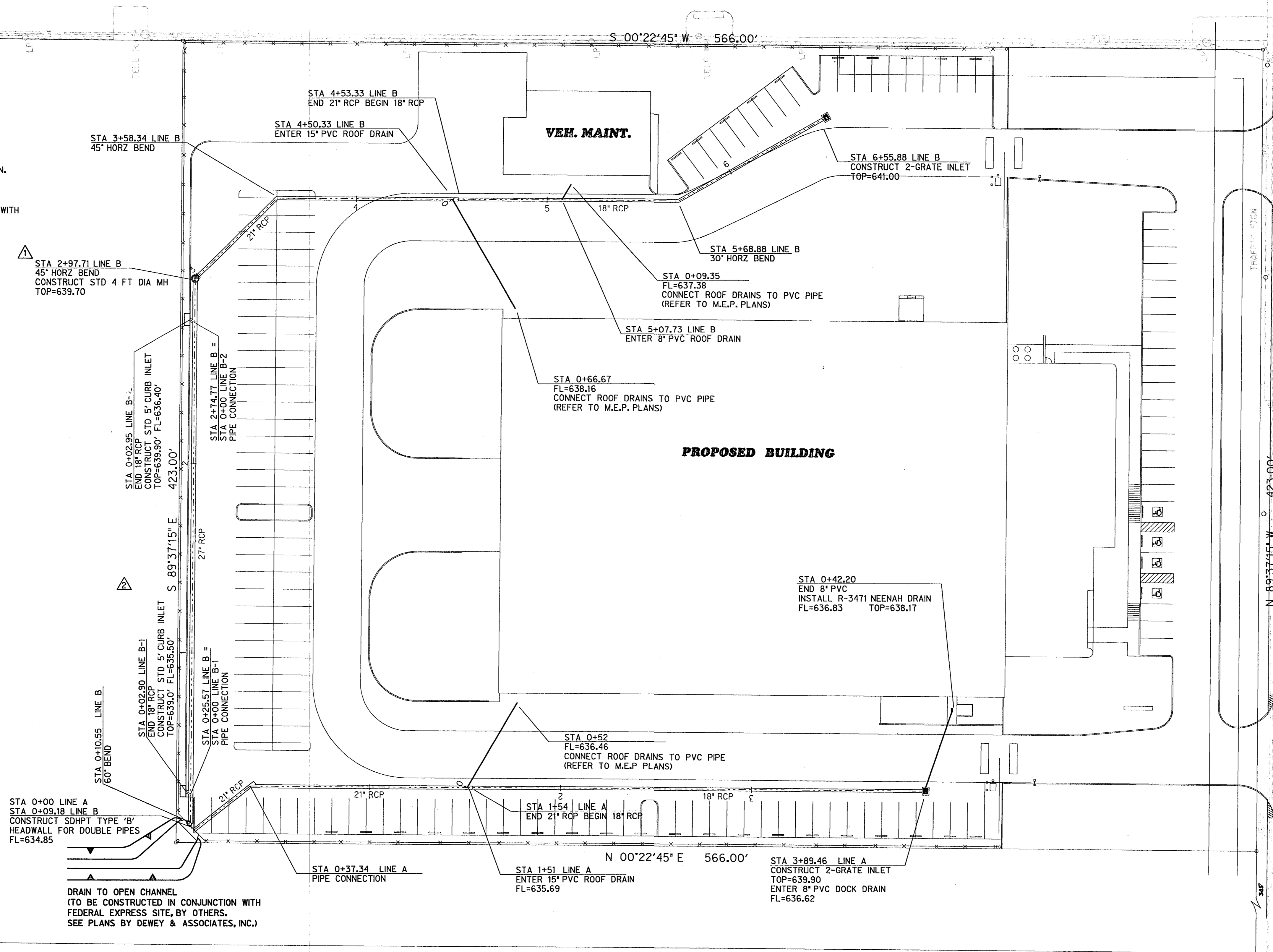


GENERAL NOTES

- 1- ALL EXISTING UTILITIES ARE SHOWN SCHEMATICALLY AND ARE FOR THE CONTRACTOR'S GUIDANCE ONLY. THE CONTRACTOR SHALL VERIFY THE LOCATION, SIZE AND MATERIAL OF ALL UTILITIES EFFECTED BY CONSTRUCTION PRIOR TO BEGINNING CONSTRUCTION. CONTRACTOR SHALL CONTACT ALL EFFECTED UTILITIES 48 HRS PRIOR TO CONSTRUCTION.
- 2- ALL WORK AND MATERIAL SHALL BE IN ACCORDANCE WITH CITY OF ADDISON STANDARD SPECIFICATIONS AND DESIGN STANDARDS, AND STANDARD SPECIFICATIONS FOR PUBLIC WORKS CONSTRUCTION PREPARED BY NORTH CENTRAL TEXAS C.O.G. (LATEST REVISION)
- 3- ALL GRATE INLETS SHALL BE CAST IN PLACE AND TIED TO PAVEMENT. PRE CAST UNITS MAY NOT BE SUBSTITUTED.

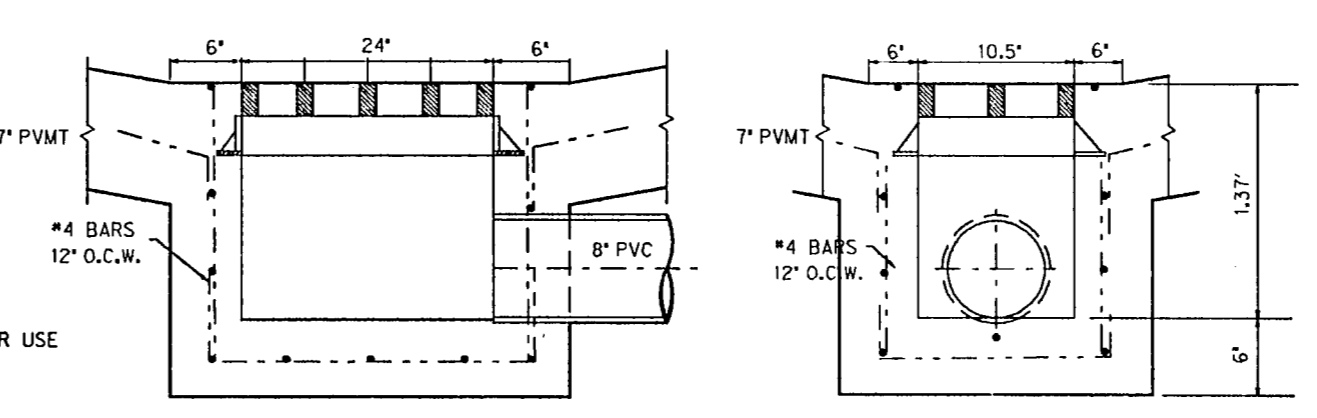


DRAIN TO OPEN CHANNEL
(TO BE CONSTRUCTED IN CONJUNCTION WITH FEDERAL EXPRESS SITE, BY OTHERS. SEE PLANS BY DEWEY & ASSOCIATES, INC.)

"AS BUILT PLANS"

All improvements shown on these plans and placed within the Town of Addison's right-of-way or easement were constructed in compliance to the Town of Addison Standards and Specifications and functions as designed.

TRUCK DOCK DRAIN DETAIL



NOT TO SCALE

STORM SEWER PLAN

ADD STORM SEWER MH-10/26/94
REVISED STORM SEWER LINES A & B-11/11/94

HALFP ASSOCIATES, INC.
ENGINEERS • SCIENTISTS • PLANNERS • SURVEYORS

MUNSON KENNEDY
PARTNERSHIP

DIENNA / SIMPKINS COMPANY
REAL ESTATE DEVELOPMENT

1400 POST OAK BLVD., SUITE 1100
HOUSTON, TEXAS 77056
713/686-1222

62 VAN CITY STATION FACILITY

ADDISON, TEXAS

PROJECT
94/G

DATE
11-11-94

REVISIONS
1

SHEET
STM-1

PAGE
5 OF 49