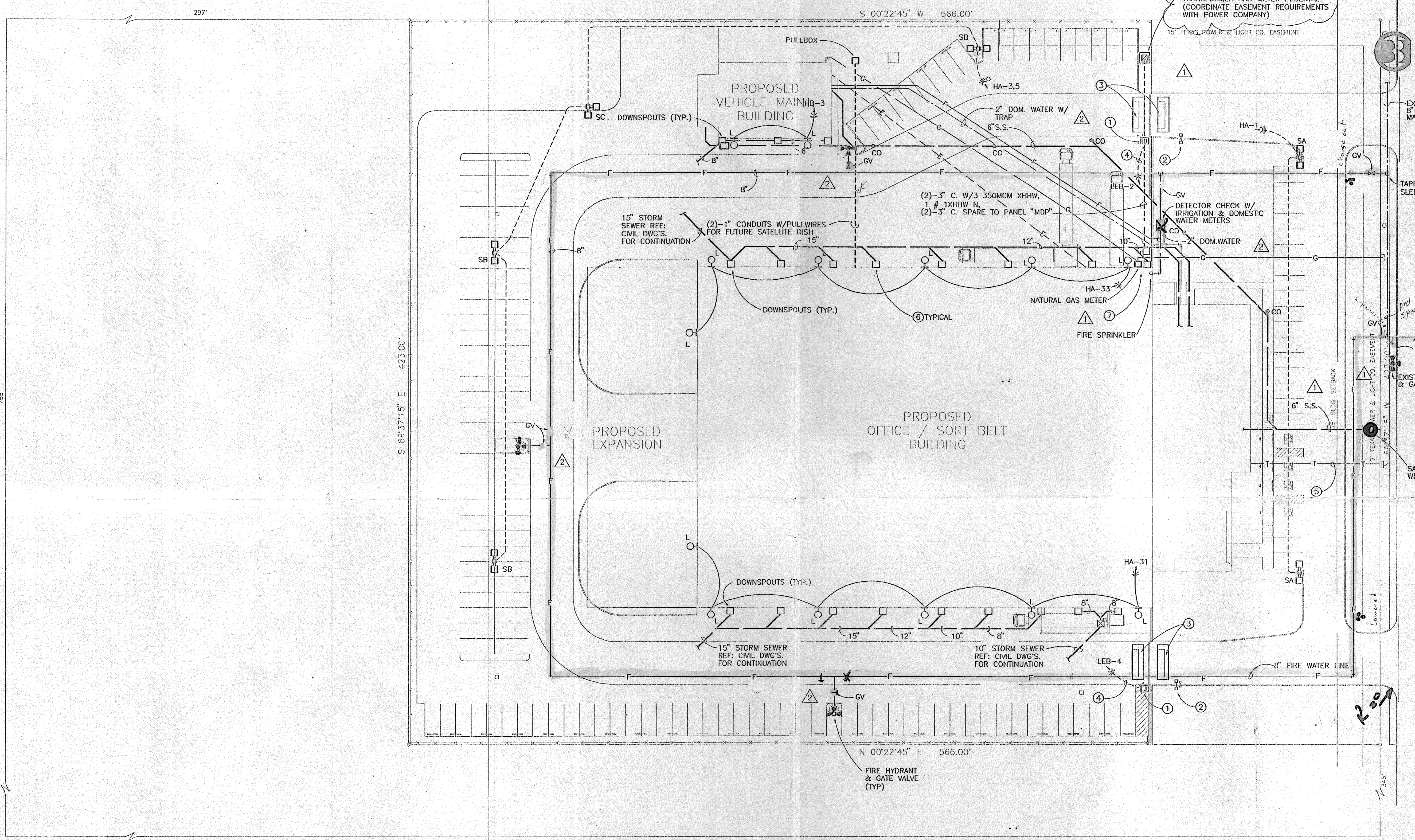


Binkley & Barfield, Inc.
 Consulting Engineers
 1710 Seacrest Drive Houston, Texas 77006

ANNAPOLIS COMPANY
 REAL ESTATE DEVELOPMENT
 1000 OAK BLVD., SUITE 1100
 ANNAPOLIS, MARYLAND 21403
 PHONE: 410-291-1712



POWER SOURCE FROM EXISTING POLE PER CITY CODE.
 PROPOSED POWER CO. PAD MOUNTED TRANSFORMER AND METER PEDESTAL (COORDINATE EASEMENT REQUIREMENTS WITH POWER COMPANY)

Airport Pkwy,
 66 VAN CITY STATION FACILITY

 ADDISON, TEXAS

PLAN NOTES

- ① ELECTRIC GATE OPERATOR WITH WIRING TO DRIVE MOTOR, GATE CONTROLLER, LOOP DETECTORS AND TO REMOTE GATE CONTROLLERS IN OFFICE.
- ② GATE CONTROLLER UNIT WITH UNDERGROUND CONTROL WIRING AND CONDUIT PER MANUFACTURER'S REQUIREMENTS
- ③ UNDERGROUND LOOP DETECTORS WITH CONTROL WIRING AND CONDUIT PER MANUFACTURER'S REQUIREMENTS
- ④ UNDERGROUND POWER FEEDER AND CONDUIT TO PANEL "LEB". PROVIDE GROUND CONDUCTOR FROM DEVICE TO PANEL GROUND BUS.
- ⑤ (2)-3" CONDUITS WITH PULLWIRE, UNDERGROUND FROM BUILDING TELEPHONE TERMINAL BOARD TO SERVICE TERMINATION POINT AS DIRECTED BY TELEPHONE CO.

GENERAL NOTES

- ⑥ INSTALL CATCH BASIN AT BASE OF EACH DOWNSPOUT RE: ARCH DWGS FOR EXACT LOCATIONS.
- ⑦ COORDINATE LOCATION OF GAS METER, ELECTRICAL SERVICE, & ENTRANCE DOOR.
- 1. ALL EXISTING & NEW UTILITY VALVES, FIRE HYDRANTS, ETC., SHALL BE ADJUSTED AS REQUIRED TO MATCH WITH FINISHED GRADES.

SITE PLAN - MEP
 1" = 30'-0"

PROJECT	9/7/G
DATE	9/22/94
REVISIONS	
△	21 OCTOBER 1994
△	04 NOV. 1994
△	09 NOV. 1994
SHEET	MEP-1
PAGE	35 of 49

1545 11/19/94
 5:08pm
 1.0