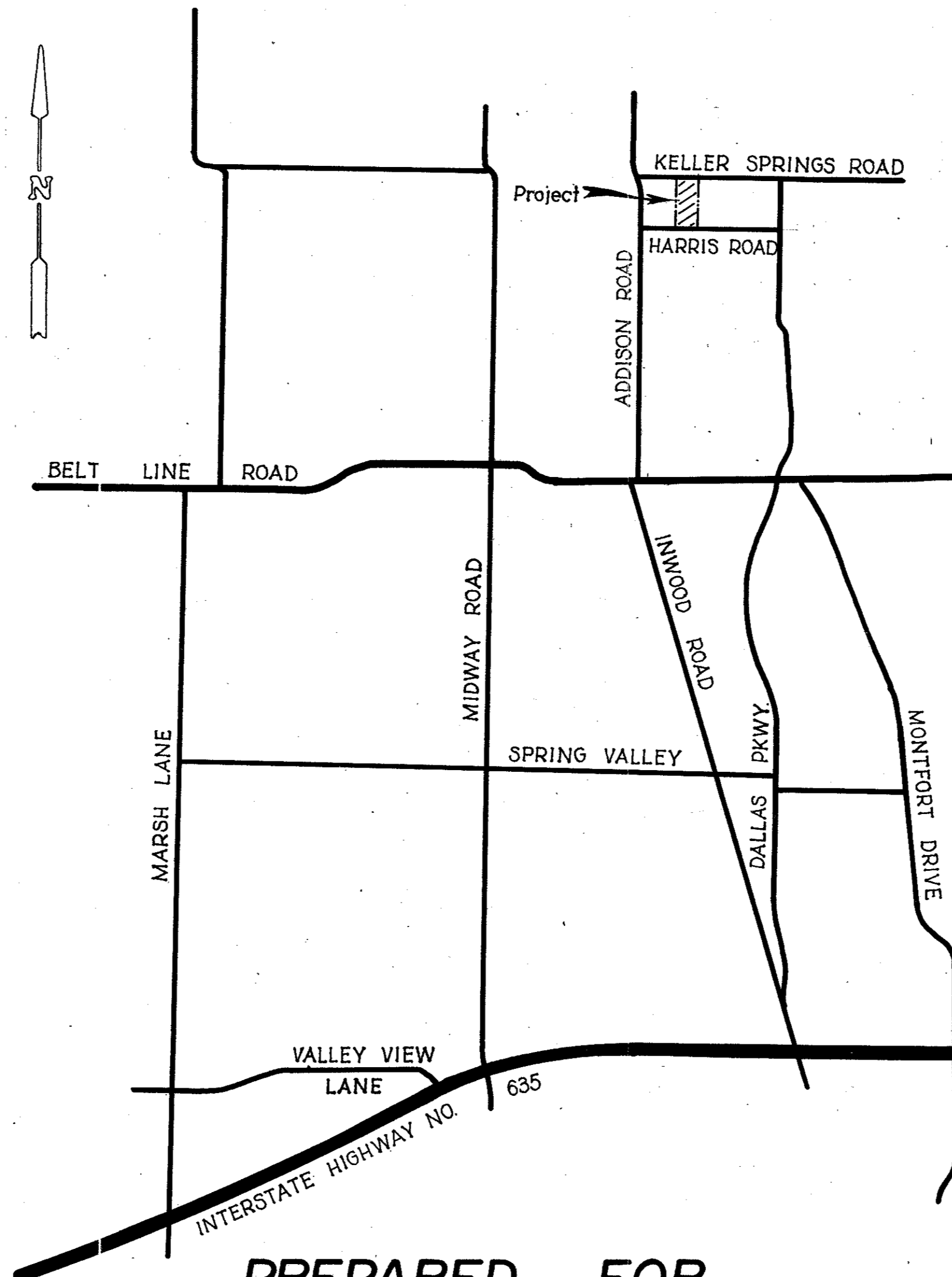


DEVELOPMENT PLANS
FOR
PARKWAY BUSINESS CENTER
CITY OF ADDISON, TEXAS

GENERAL NOTES

1. All street and alley intersections and connections shall be built by the developer.
2. Excavation from streets to be deposited in low areas to allow proper drainage.
3. All existing ditches, except as noted on drainage plans, are to be filled to conform to surrounding terrain.
4. It will be the responsibility of the developer and/or the contractor to protect and maintain to proper line and grade all public utilities, manholes, cleanouts, valve boxes, fire hydrants, etc. during the construction of this project, prior to and after placing permanent pavement.
5. All materials and workmanship shall conform to the City Standards and Specifications.



CITY OF ADDISON
APPROVED
FOR CONSTRUCTION

BUILDING DEPARTMENT

DATE: _____
NOTE: CONTRACTOR IS HEREBY INSTRUCTED TO EXERCISE CARE IN MEETING OR EXCEEDING ALL REQUIREMENTS OF BOTH NATIONAL AND LOCAL CODES AND/OR ORDINANCES APPLICABLE TO HIS WORK. APPROVAL OF THESE DRAWINGS SHALL NOT BE CONSTRUED TO RELIEVE RESPONSIBILITY OR IMPLY VARIANCE TO SUCH CODES.

PREPARED FOR

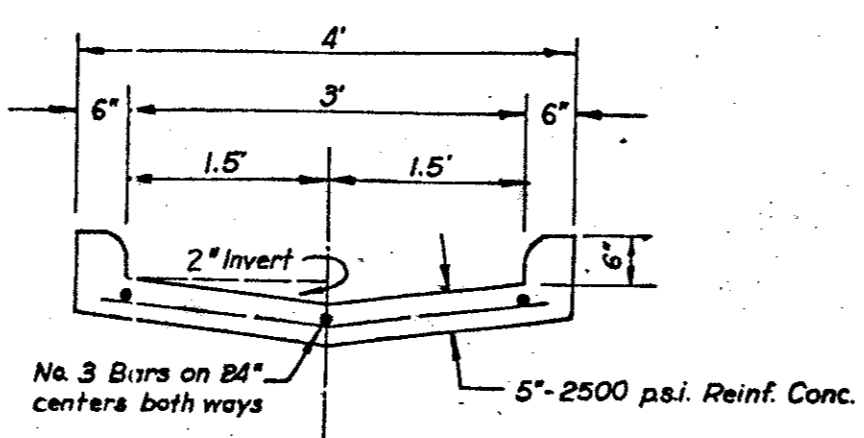
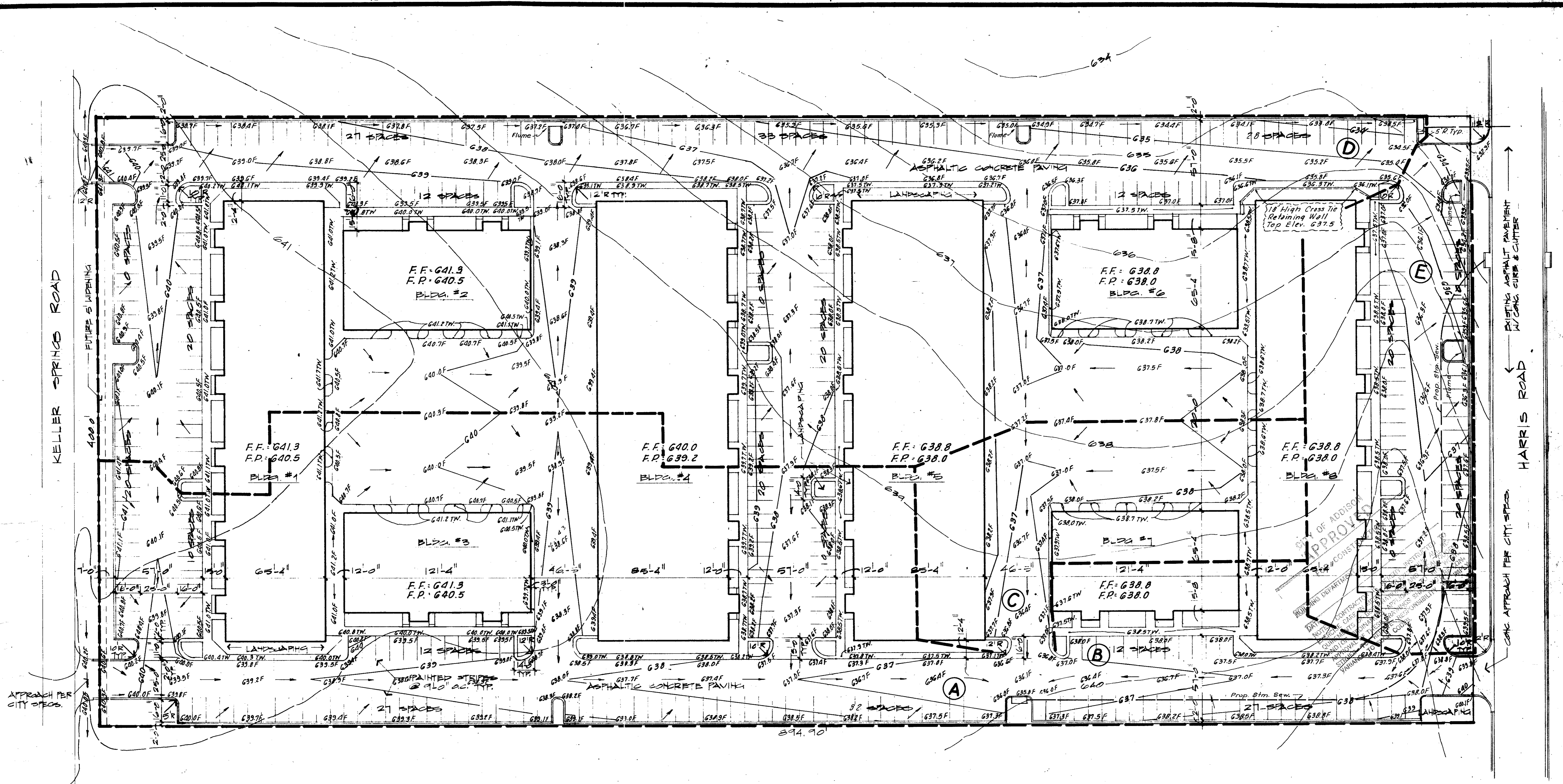
MURRAY PROPERTIES COMPANY

DON A. TIPTON, INC.

CONSULTING ENGINEERS

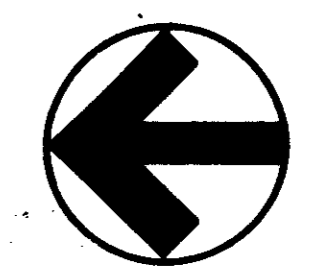
13600 L.B.J. FREEWAY

GARLAND, TEXAS 75041

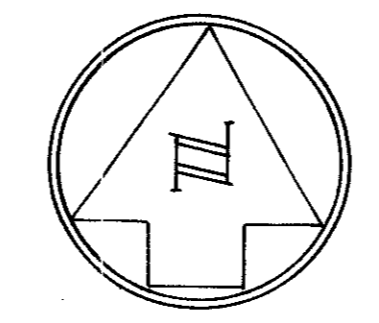
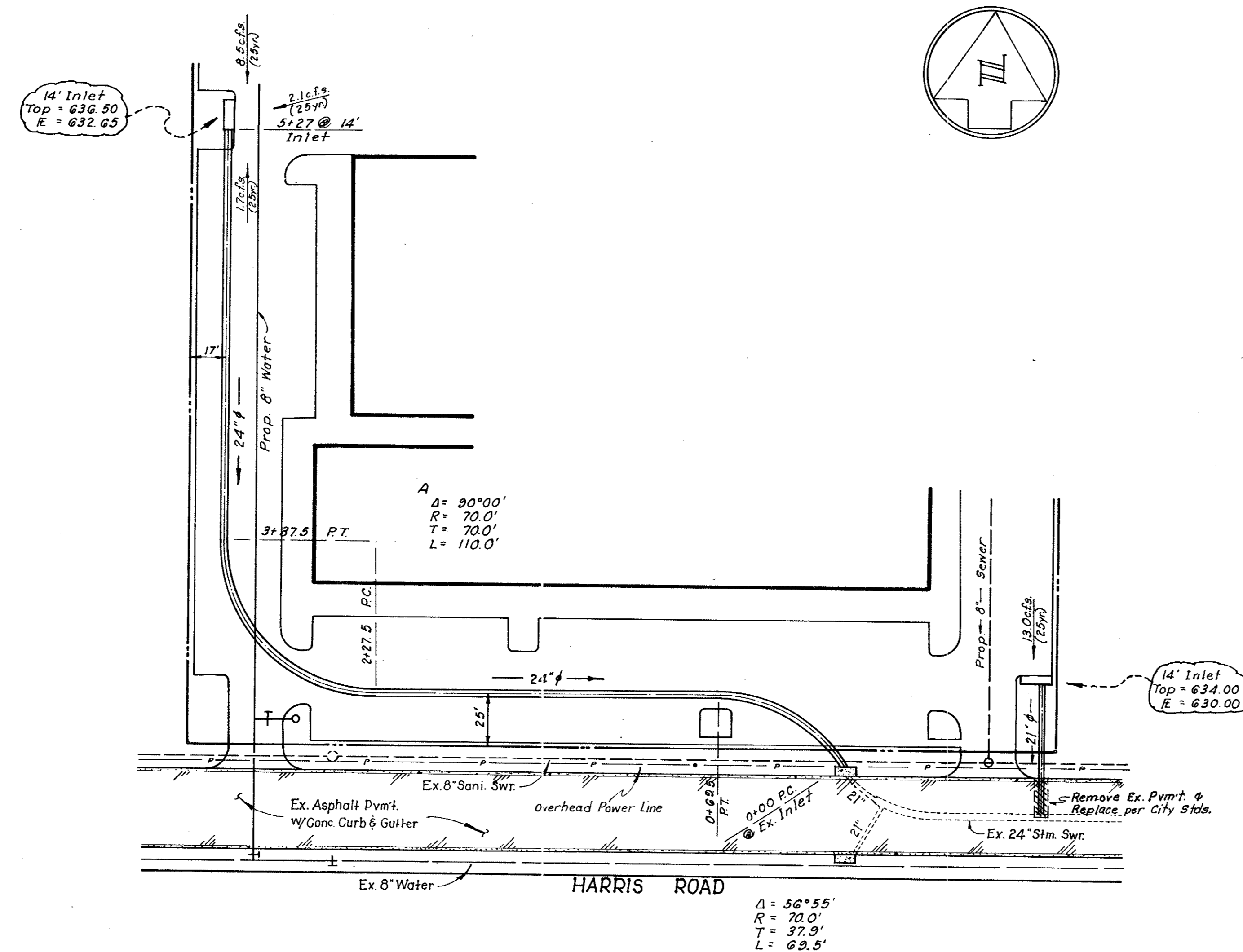


DETAIL OF FLUME
No Scale

AREA	ACRES	"C"	I _{avg} in/hr	R.F. 25yr	Q _{avg} c.f.s.
(A)	2.5	0.6	5.7	3.42	8.5
(B)	0.5	0.6	5.7	3.42	1.7
(C)	0.6	0.6	5.7	3.42	2.1
(D)	3.8	0.6	5.7	3.42	13.0
(E)	0.8	0.6	5.7	3.42	2.7

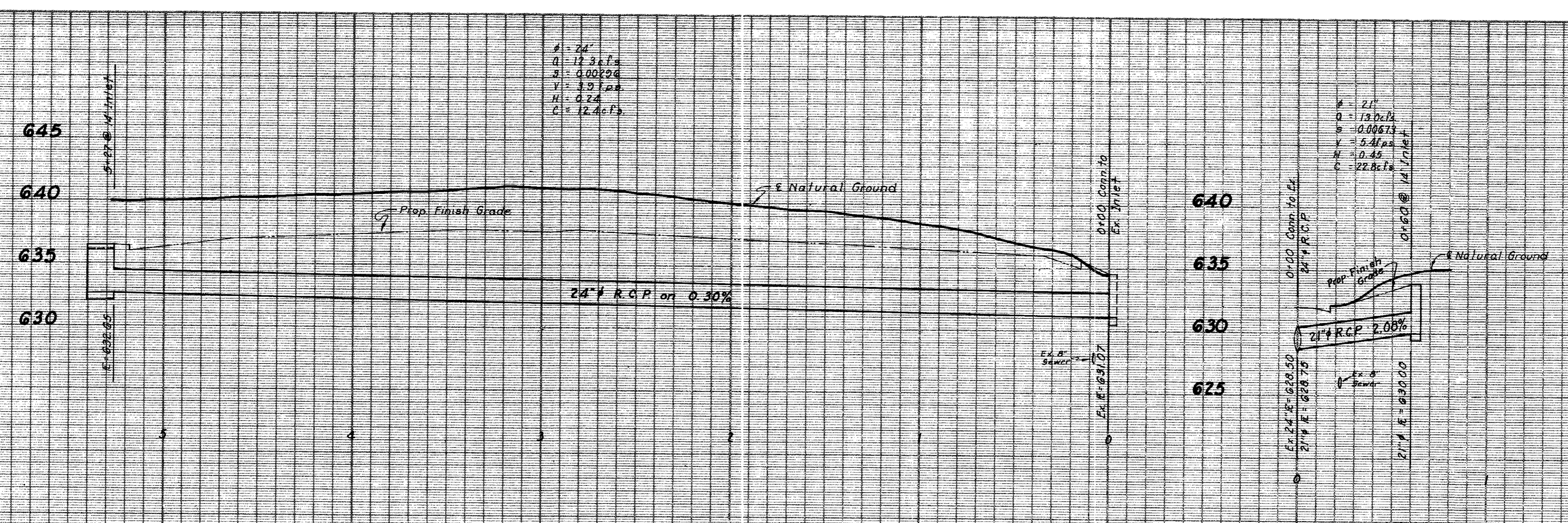


DRAINAGE MAP & GRADING PLAN
 Don A. Tipton, Inc. Consulting Engineers
 13600 L.B.J. Freeway Garland, Texas 75041
 Scale: 1" = 30'
 July 27, 1979



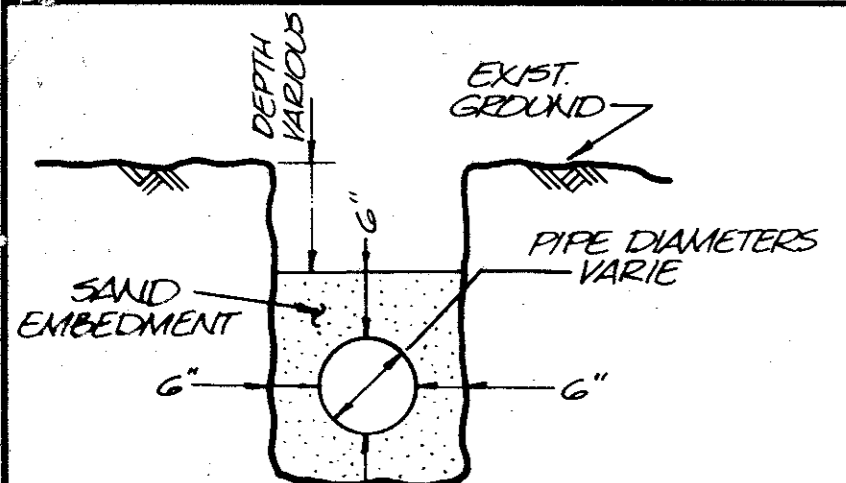
CITY OF ADDISON APPROVED
 FOR CONSTRUCTION

NOTE: It is the responsibility of the Contractor to notify all utility companies and to verify location of all existing utilities prior to the start of construction.

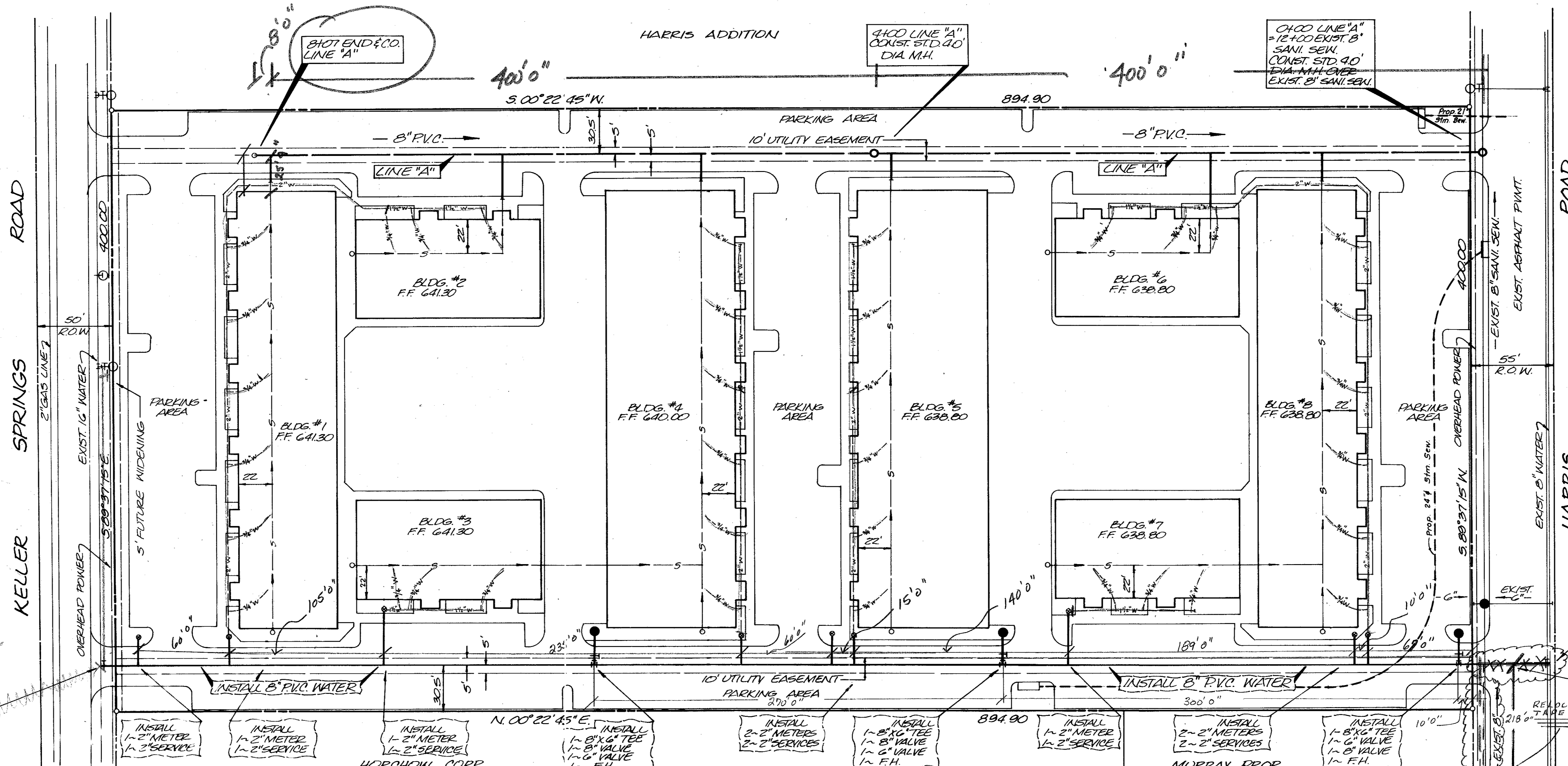


B.M.
 R.R. spike in power pole North side of Harris Rd. 200' East of Addison Rd. Elev = 643.62

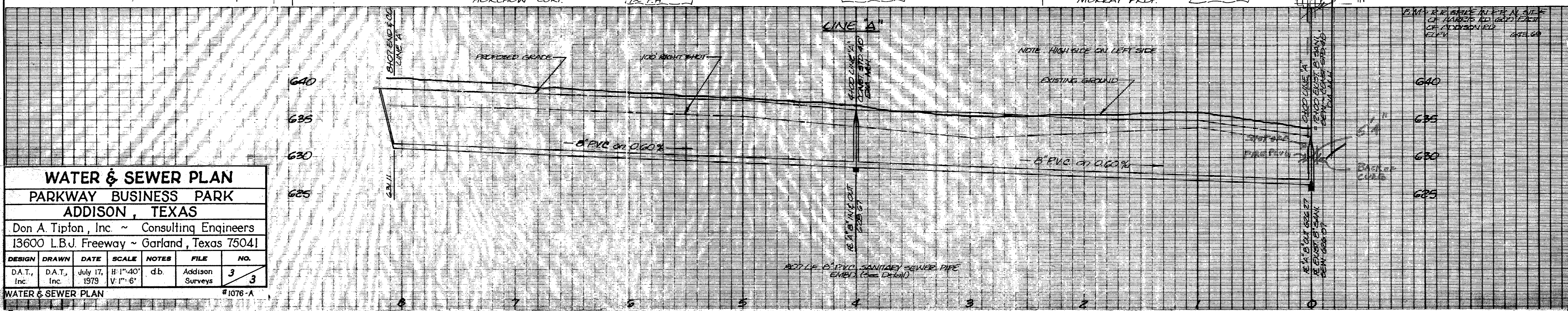
STORM SEWER						
PARKWAY BUSINESS CENTER						
ADDISON, TEXAS						
Don A. Tipton, Inc. ~ Consulting Engineers						
13600 L.B.J. Freeway ~ Garland, Texas 75041						
DESIGN	DRAWN	DATE	SCALE	NOTES	FILE	NO
D.A.T. Inc.	r.o.	July 27, 1979	H. 1"=40' V. 1"=8'	d.b.	Addison Surveys	3 4



TYPICAL WATER & SANITARY SEWER EMBEDMENT DETAIL



- NOTES:
1. Water meters, water mains shall installed by the Contractor, and a part of the General Contract.
 2. All water on side of the water furnished and installed by Plumbing Contractor.
 3. Sanitary sewer main, Line "A", including its manholes and taps, shall be installed by the Site Contractor, and are not part of the General Const Contract.
 4. All sanitary sewer line "building side" of the sewer shall be furnished and installed by the Plumbing Contractor.



WATER & SEWER PLAN						
PARKWAY BUSINESS PARK						
ADDISON, TEXAS						
Don A. Tipton, Inc. ~ Consulting Engineers						
13600 L.B.J. Freeway ~ Garland, Texas 75041						
DESIGN	DRAWN	DATE	SCALE	NOTES	FILE	NO.
D.A.T., Inc.	D.A.T., Inc.	July 17, 1979	H: 1"=40' V: 1"=6'	d.b.	Addison Surveys	3
WATER & SEWER PLAN #1076-A						

Murray Properties Company
 A subsidiary of Murray Financial Corporation
 1010 W. Mockingbird Dallas, Texas (214) 630-7070

REVISED	

PARKWAY BUSINESS CENTER
 4950 KELLER SPRINGS ROAD
 ADDISON, TEXAS

AS BUILT
 JOB NO. 1932
 DATE 8/15/79
 DWN BY MRW
 CHK BY WLN

SHEET NUMBER
12
 OF 13 SHEETS