

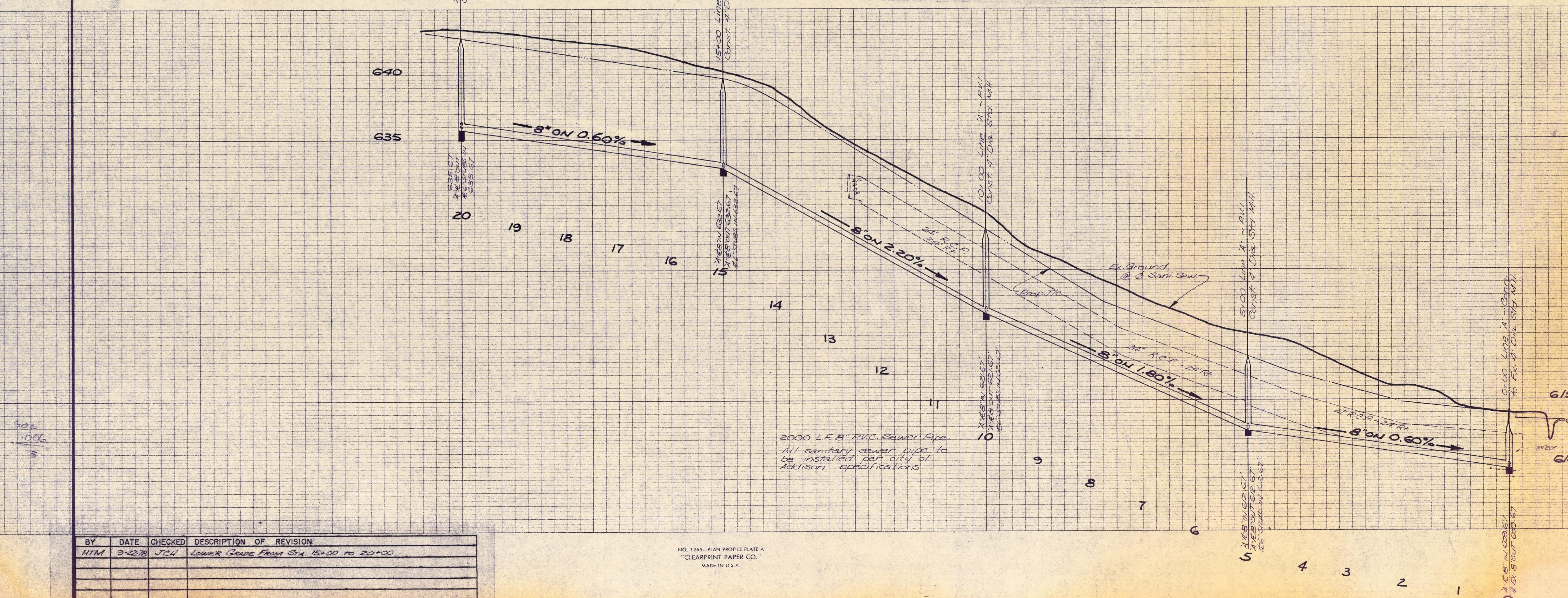
NOTE: All work to be performed in accordance with City of Addison Specifications

NOTE: Water Valve Riser Boxes and Sanitary Sewer Cleanouts shall have a 18" x 18" x 6" concrete pad poured around top.

NOTE: Municipal water main distribution pipe 12" in diameter and less shall be P.V.C. with integral thickened wall bells and shall be a minimum of 150 P.S.I. pressure classification S.D.R. - 18.

NOTE: Number 16 copper plastic locator wire shall be laid on top of P.V.C. water pipe and be connected to all fire hydrants and valves, in accordance with City of Addison specifications. (Alt. - Locator tape may be laid in pipe trench).

NOTE: Water & Sewer line embedment shall be 6" sand cushion on all sides of pipe. Remaining trench shall be backfilled and compacted with "select" material in accordance with City of Addison Specifications.



AS BUILT
AUG. 13, 1979

BENCH MARK: 60d nail in power pole north side of Keller Springs Rd., and 150' more or less east of the centerline intersection of Dallas Hwy. ELEV. 618.92

SANI. SEWER & WATER PLANS
FOR HARRIS ROAD
CITY OF ADDISON
DALLAS COUNTY, TEXAS
THREADGILL - DOWDEY and ASSOCIATES
CONSULTING ENGINEERS DALLAS, TEXAS

DESIGN	DRAWN	CHECKED	DATE	SCALE	JOB	SHEET
J.C.H.	HTM	J.C.H.	6-78	1"=4'V	492-E	3/5

PLATE No.

BY	DATE	CHECKED	DESCRIPTION OF REVISION
HTM	9-22-78	JCH	LOWER GRADE FROM STA. 15+00 TO 20+00

NO. 1265-PLAN PROFILE PLATE A
"CLEARPRINT PAPER CO."
MADE IN U.S.A.