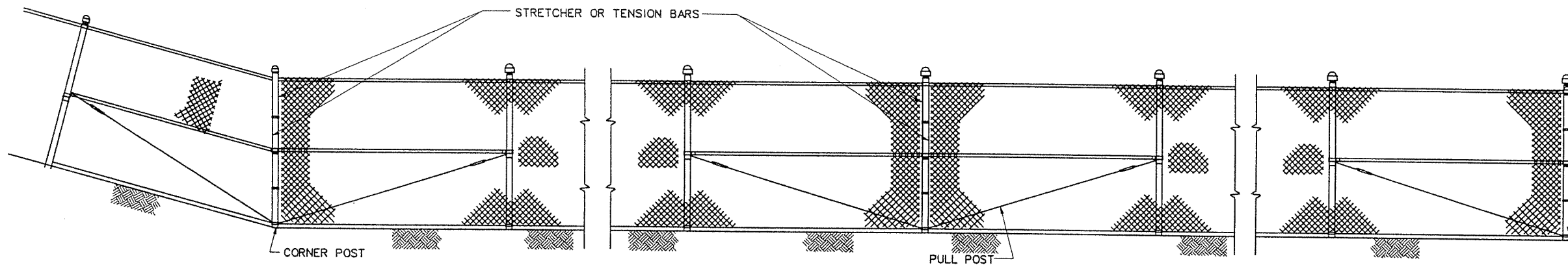


CHAIN-LINK WIRE FENCE WITH EXTENSION ARMS

~~AND BARB WIRE~~
NOT TO SCALE

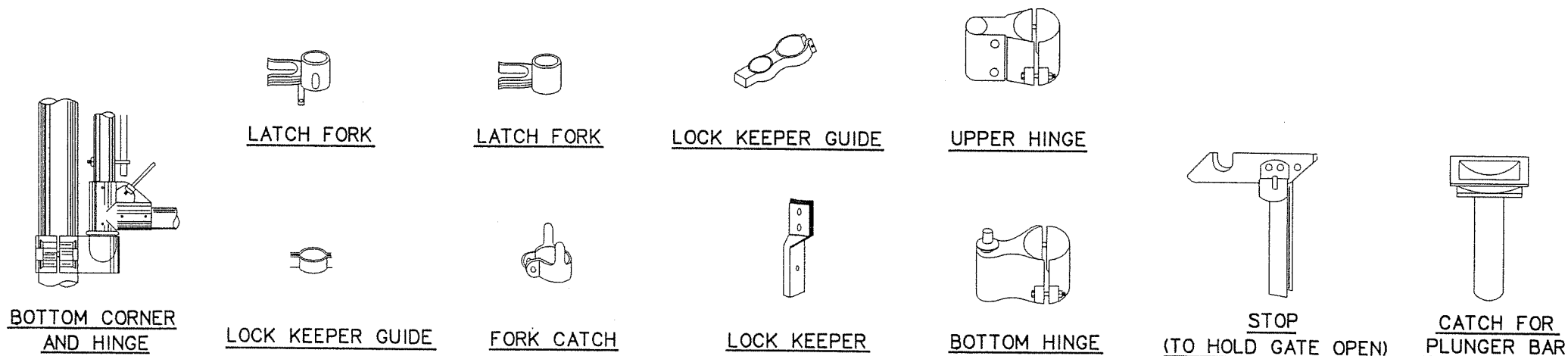
DOUBLE SWING GATE

NOT TO SCALE



METHOD OF BRACING END, CORNER, AND PULL POST

NOT TO SCALE



NOTES:

1. HORIZONTAL BRACE RAILS, TRUSS BRACING AND STRETCHER OR TENSION BARS ATTACHED TO POST BY MEANS OF BANDS, SHALL BE USED FOR END, CORNER, ANGLE, AND INTERMEDIATE BRACE POSTS AND WHERE REQUIRED BY THE ENGINEER.
2. FITTINGS SHOWN ARE SUGGESTED ONLY. SIMILAR DESIGNS MEETING THE APPROVAL OF THE ENGINEER MAY BE USED. ALL FITTINGS TO BE MALLEABLE IRON, CAST IRON, OR PRESSED STEEL.
3. MATERIALS AND CONSTRUCTION SHALL BE IN ACCORDANCE WITH F.A.A. STANDARD SPECIFICATIONS AND THE SPECIAL PROVISIONS OF THIS CONTRACT.

DCT-2003 09:25 39020\Cod\Sheets\apdf08.dgn

NO.	DATE	REVISION	APPROV.	NO.	DATE	REVISION	APPROV.
1.	10/10/03	SHEET ISSUED	JSN				



10/10/03

HNTB ARCHITECTS ENGINEERS PLANNERS
The HNTB Companies

DESIGN CHECK	JSN	PROJECT NO.	39020
DRAWN	JDH		
CHECK	GFS		
DATE	SEPTEMBER 2003		



TOWN OF ADDISON		SHEET
AIRPORT PARKWAY REALIGNMENT		
FENCE DETAILS		