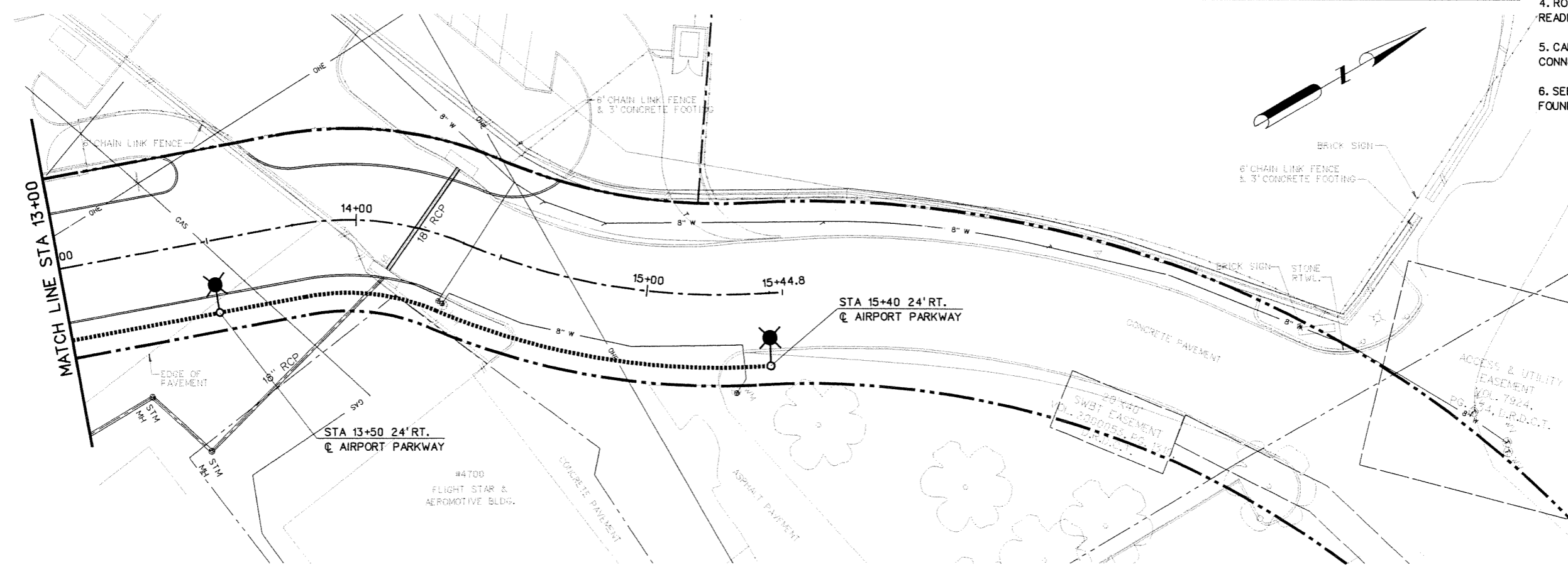
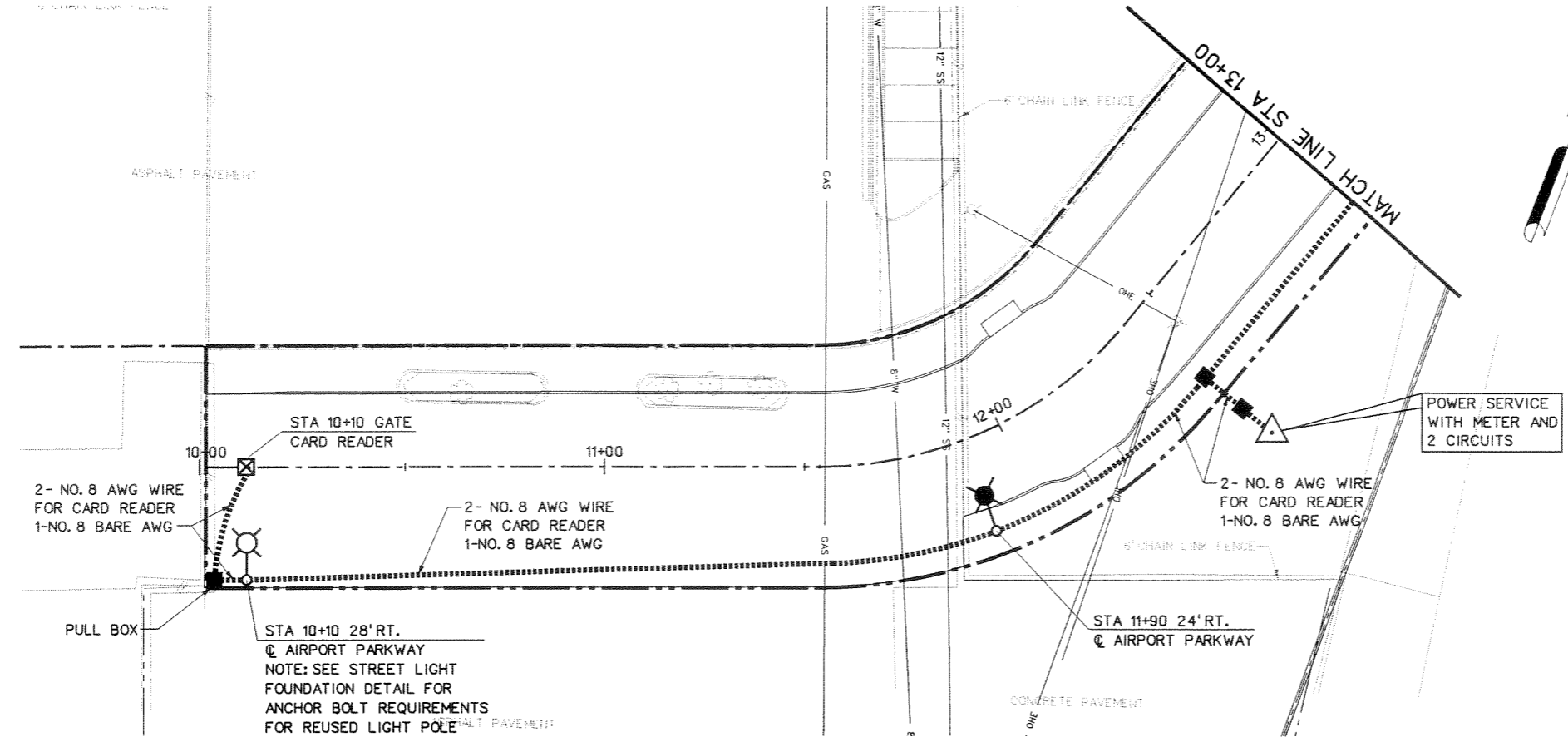


LEGEND

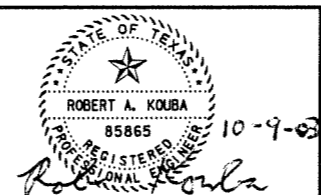
- REUSED STREET LIGHT SUPPLIED BY ADDISON AIRPORT
- STREET STYLE LIGHTING STANDARD - SEE NOTE 1
- CONDUIT, 2" SCH 40 PVC
- GATE CARD READER
- PULL BOX
- POWER SERVICE

- NOTE:
1. CONTRACTOR TO INSTALL POLE FOUNDATION AND CONDUIT. TXU TO INSTALL CIRCUIT CONDUCTORS AND 30-FOOT RECTANGULAR STYLE STREET LIGHTING STANDARDS.
 2. CONTRACTOR TO CONNECT TO EXISTING TXU STUBOUT.
 3. ALL STREET LIGHTING FOUNDATIONS SHALL BE 6-FEET BEHIND CURB.
 4. ROADWAY LIGHTING CIRCUIT AND CARD READER CIRCUIT WILL SHARE 2" CONDUIT.
 5. CARD READER CIRCUIT SHALL NOT BE CONNECTED TO ROADWAY LIGHTING PHOTOCCELL.
 6. SEE SHEET MD-1 FOR STREET LIGHT FOUNDATION DETAIL.



09-OCT-2003 14:23 G:\39020\Cad\Sheets\opri\01.dgn

NO.	DATE	REVISION	APPROV.	NO.	DATE	REVISION	APPROV.
1.	9/30/03	SHEET ISSUED	JSN				



HNTB ARCHITECTS ENGINEERS PLANNERS
The HNTB Companies

DESIGN CHECK JSN
DRAWN CHECK GFS
DATE SEPTEMBER 2003

PROJECT NO. 39020

SCALE



TOWN OF ADDISON
AIRPORT PARKWAY REALIGNMENT

ILLUMINATION PLAN
STA 10+00 TO STA 15+45

TOWN OF ADDISON, TEXAS

SHEET
IL-1