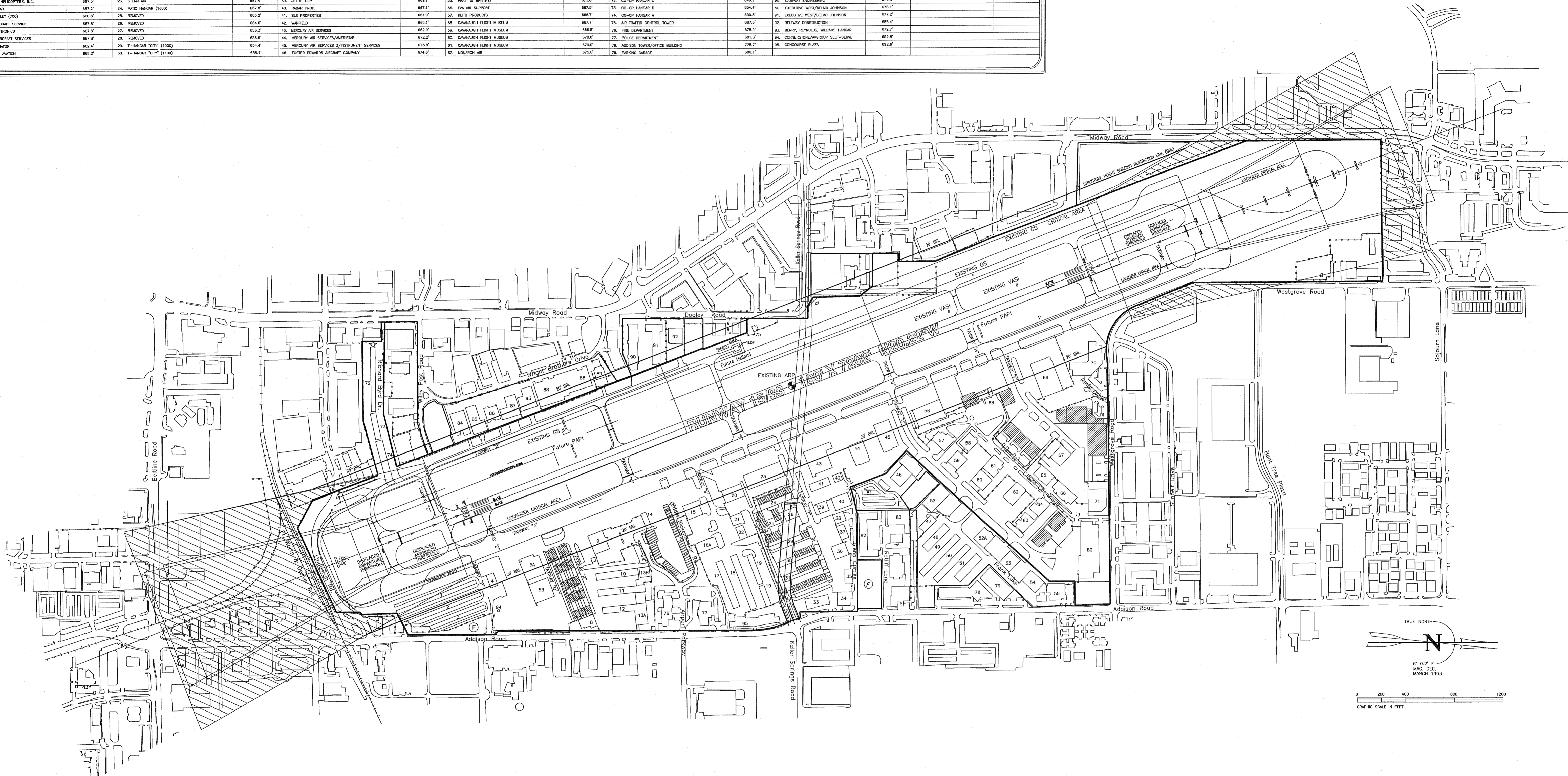


BUILDING LEGEND

#	TENANT OR OWNER	TOP ELEVATION	#	TENANT OR OWNER	TOP ELEVATION	#	TENANT OR OWNER	TOP ELEVATION	#	TENANT OR OWNER	TOP ELEVATION	#	TENANT OR OWNER	TOP ELEVATION	#	TENANT OR OWNER	TOP ELEVATION
1.	T-HANGAR "CITY" (100)	649.2'	16A.	AIRPORT FLYING SCHOOL/OWENS AVIATION	655.2'	47.	CRESCENT REAL ESTATE	667.9'	83.	CHERRY AIR, INC.	672.2'	80.	WESTGROVE AIR PLAZA	683.3'	FE.	Future Executive Hangar	
2.	T-HANGAR "CITY" (400)	648.1'	16B.	PORT-O-PORBS (3)	656.2'	48.	FRENCHLY AVIATION	662.7'	84.	DOYLE HARTMAN	672.2'	81.	ADDISON LOCKER	684.2'	FT.	Future T-Hangar	
3.	T-HANGAR "CITY" (800)	650.9'	17.	PATO HANGAR (1600)	657.8'	49.	FRENCHLY AVIATION	658.4'	85.	METZ INDUSTRIES	672.2'	82.	TED-48 PAVES	653.7'	FL.	Future Large Hangar	
4.	CAKON AVIATION SERVICES	650.2'	18.	PATO HANGAR (1400)	657.8'	50.	FRENCHLY AVIATION	658.0'	86.	HEIDEN INDUSTRIES	682.8'	83.	ADDISON CAR CARE CENTER	681.7'			
5A.	SPORTCH AVIATION, INC.	706.9'	19.	T-HANGAR "CITY" (600)	661.7'	51.	AMERICAN FLYERS	665.4'	87.	INTERLIT	678.4'	84.	ARTEX TOOL	664.2'			
5B.	AVIARUP		20.	WALTER FULLER AIRCRAFT SALES/AIRCRAFT WELDING	661.7'	52.	CRESCENT REAL ESTATE	684.9'	88.	ADDISON AIRPORT OF TEXAS INC.	684.4'	85.	HOWARD TWITCHELL	673.9'			
6.	T-HANGAR "CITY" (TO BE REMOVED)	653.4'	21.	WALTER FULLER AIRCRAFT SALES/AIRCRAFT WELDING	668.8'	53.	LENOX HANGAR	663.2'	89.	WILSON AIR/UNITED STATES CUSTOMS OFFICE	678.4'	86.	RECON/KEITH THOMPSON	699.8'			
7.	T-HANGAR "CITY" (TO BE REMOVED)	653.6'	22.	JET 1 & 2 HANGAR	662.2'	54.	NORTH TEXAS AIRCRAFT SERVICES, INC.	643.8'	90.	WILSON AIR/ENRICHMENT	671.3'	87.	J & W FOSTER/STEW AVIATION	677.9'			
8.	ONEFLIGHT HELICOPTERS, INC.	667.4'	23.	JET 1 & 2 HANGAR	667.2'	55.	AB-C SPECIALISTS	673.8'	91.	ITALIK	693.7'	88.	ENYARD INDUSTRIES	677.4'			
9.	ONEFLIGHT HELICOPTERS, INC.	667.9'	24.	STERN AIR	667.4'	56.	PRATT & WHITNEY	669.1'	92.	CO-OP HANGAR C	649.9'	89.	GATWAY ENGINEERING	674.8'			
10.	PATO HANGAR	657.2'	25.	PATO HANGAR (1600)	657.8'	57.	RAGAR PROP.	667.1'	93.	CO-OP HANGAR B	654.4'	90.	EXECUTIVE WEST/DELMO JOHNSON	678.1'			
11.	CHUCK WAGLEY (700)	660.8'	26.	REMOVED	665.2'	58.	SLS PROPERTIES	664.9'	94.	CO-OP HANGAR A	650.8'	91.	EXECUTIVE WEST/DELMO JOHNSON	677.2'			
12.	HENLEY AIRCRAFT SERVICE	667.8'	27.	REMOVED	664.8'	59.	WARFIELD	669.1'	95.	AIR TRAFFIC CONTROL TOWER	687.7'	92.	BELTWAY CONSTRUCTION	685.4'			
13A.	TUBE ELECTRONICS	667.8'	28.	REMOVED	656.2'	60.	MERCURY AIR SERVICES	662.9'	96.	FIRE DEPARTMENT	678.9'	93.	HERRY, REYNOLDS, WILLIAMS HANGAR	672.7'			
13B.	HENLEY AIRCRAFT SERVICES	667.8'	29.	REMOVED	656.9'	44.	MERCURY AIR SERVICES/AMERSTAR	672.2'	97.	POLICE DEPARTMENT	681.8'	94.	CORNERSTONE/WISDOM SELF-SERVE	653.8'			
14.	AB BEN AVIATOR	662.4'	30.	T-HANGAR "CITY" (1000)	654.4'	45.	MERCURY AIR SERVICES 3/AIRCRAFT SERVICES	675.9'	98.	ADDISON TOWER/OFFICE BUILDING	775.7'	95.	CONCOURSE PLAZA	692.8'			
15.	CENTERLINE AVIATION	669.2'	31.	PATO HANGAR (1200)	658.2'	46.	FOSTER EDWARDS AIRCRAFT COMPANY	674.6'	99.	PARKING GARAGE	680.1'						



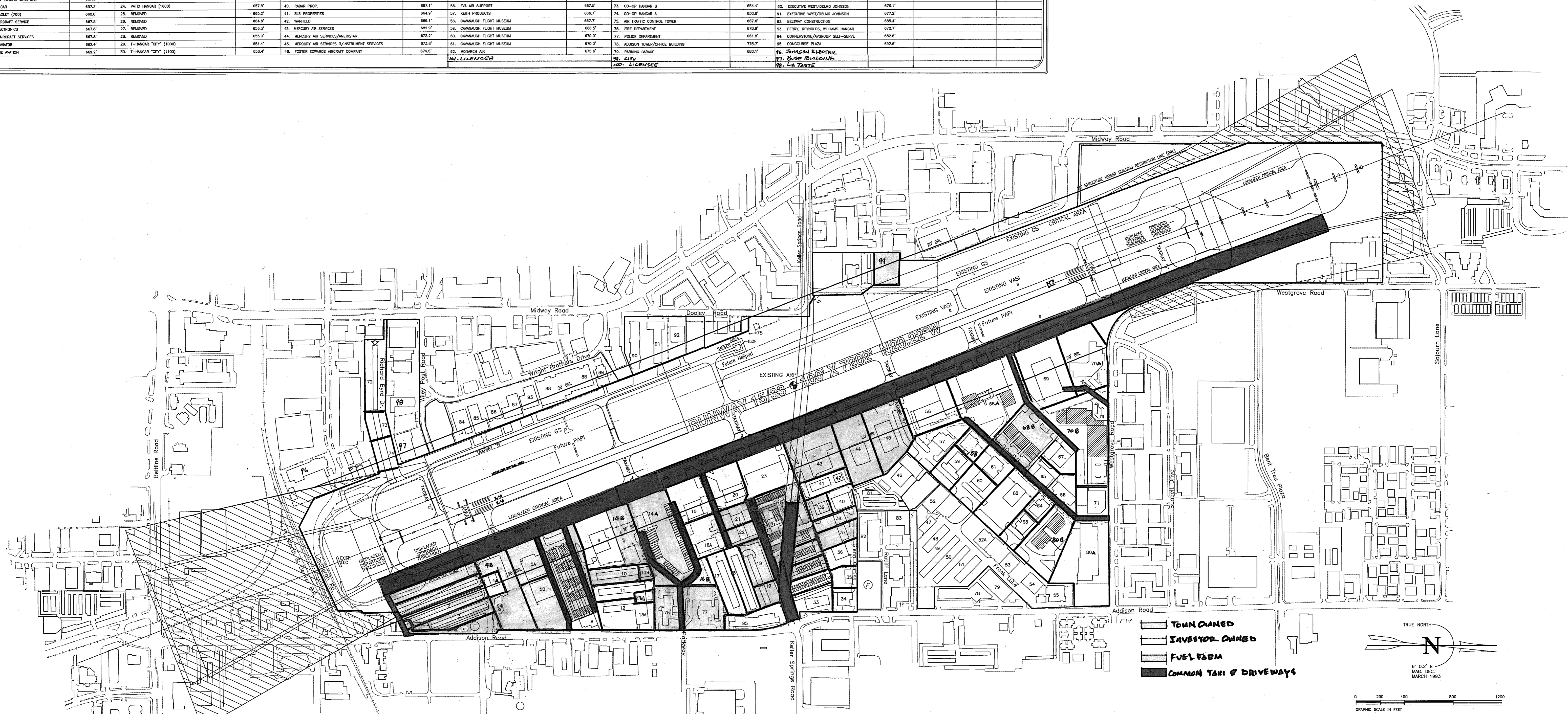
ADDISON AIRPORT
ADDISON, TEXAS

AIRPORT LAYOUT PLAN

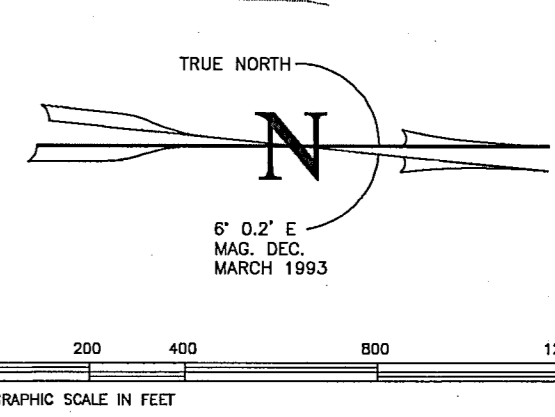
ADDISON AIRPORT PLAN (PARCELS)

BUILDING LEGEND

#	TENANT OR OWNER	TOP ELEVATION	#	TENANT OR OWNER	TOP ELEVATION	#	TENANT OR OWNER	TOP ELEVATION	#	TENANT OR OWNER	TOP ELEVATION	#	TENANT OR OWNER	TOP ELEVATION
1.	T-HANGAR "CITY" (300)	649.2'	16A.	AIRPORT FLYING SCHOOL/OWNERS AVIATION	655.2'	47.	CRESCENT REAL ESTATE	667.2'	83.	CHERRY A&C INC.	672.2'	89.	WESTGROVE AIR PLAZA	683.3'
2.	T-HANGAR "CITY" (600)	648.1'	16B.	PORT-O-PORTS (3)	652.2'	51.	PARO HANGAR (1200)	650.2'	84.	DOYLE WATMAN	672.2'	91.	ADDISON LOCKER	684.2'
3.	T-HANGAR "CITY" (300)	650.2'	17.	PARO HANGAR (1600)	657.2'	32.	HEZ & WIKES (1200)	658.2'	85.	METZ WAGNER	672.2'	92.	33-AIR PARTS	685.2'
4.	CRASH AVIATION SERVICES	659.5'	18.	PARO HANGAR (1400)	657.2'	33.	FLAPS/LONG SHOTS/EMTZ	665.2'	86.	HEMSEN INDUSTRIES	682.2'	93.	ADDISON CAR CARE CENTER	681.2'
5A.	SKYTECH AVIATION, INC.	708.9'	19.	T-HANGAR "CITY" (600)	661.2'	34.	AMERICAN FLYERS	663.2'	87.	INTERJET	678.4'	94.	ARTIC TOOL	654.2'
5B.	AVIAGROUP	708.9'	20.	WALTER FULLER AIRCRAFT SALES/AIRCRAFT WELDING & SHEET METAL CO./ORIBUS AVIATION/DYNAMIC AVIATION	668.2'	35.	TOY BOX	663.9'	88.	ADDISON AIRPORT OF TEXAS INC.	684.4'	95.	HOWARD MITCHELL	673.9'
6.	T-HANGAR "CITY" (TO BE REMOVED)	653.4'	21.	JET TO HANGAR	666.2'	36.	LENIX HANGAR	663.2'	89.	MILLON AIR/UNITED STATES CUSTOMS OFFICE	678.4'	96.	HEIDEN/KATH THOMPSON	666.8'
7.	T-HANGAR "CITY" (TO BE REMOVED)	653.8'	22.	JET 1 & 2 HANGAR	667.2'	37.	NORTH TEXAS AIRCRAFT SERVICES, INC.	663.2'	90.	MILLON AIR/HIGHWAT	671.2'	97.	J. & W/HERSTORY AVIATION	677.2'
8.	CHANGELIGHT HELICOPTERS, INC.	667.4'	23.	STERN AIR	667.4'	38.	AR-O SPECIALISTS	672.8'	91.	ITALY	683.2'	98.	EDWARD INDUSTRIES	677.8'
9.	CHANGELIGHT HELICOPTERS, INC.	667.5'	24.	FATO HANGAR (1600)	657.8'	39.	JET II "CITY"	669.1'	92.	CO-OP HANGAR C	649.9'	99.	GATEWAY ENGINEERING	674.8'
10.	PARO HANGAR	657.2'	25.	REMOVED	662.2'	40.	BACAR PROP.	667.1'	93.	CO-OP HANGAR B	654.4'	100.	EXECUTIVE WEST/DELMO JOHNSON	676.1'
11.	CHUCK WAGLEY (700)	660.8'	26.	REMOVED	664.2'	41.	SLS PROPERTIES	664.9'	94.	CO-OP HANGAR A	650.8'	101.	EXECUTIVE WEST/DELMO JOHNSON	677.2'
12.	HENLEY AIRCRAFT SERVICE	667.8'	27.	REMOVED	664.2'	42.	INWFIELD	669.1'	95.	AIR TRAFFIC CONTROL TOWER	697.8'	102.	BELTWAY CONSTRUCTION	695.4'
13A.	FIVE ELECTRONICS	667.8'	28.	REMOVED	658.2'	43.	WINDOLBY AIR SERVICES	662.2'	96.	FIRE DEPARTMENT	678.8'	103.	BERRY REYNOLDS WILKINS HANGAR	672.2'
13B.	HENLEY AIRCRAFT SERVICE	667.8'	29.	T-HANGAR "CITY" (1000)	654.4'	44.	WINDOLBY AIR SERVICES/AMERSTAR	672.2'	97.	POLICE DEPARTMENT	681.8'	104.	CORNERSTONE/ANGROUP SELF-SERVE	658.8'
14.	AIR BEN AVIATOR	662.4'	30.	T-HANGAR "CITY" (1100)	658.4'	45.	WINDOLBY AIR SERVICES 3/INSTRUMENT SERVICES	673.8'	98.	ADDISON TOWER/OFFICE BUILDING	778.2'	105.	CONCOURSE PLAZA	692.6'
15.	CENTERLINE AVIATION	668.2'	31.	T-HANGAR "CITY" (1100)	658.4'	46.	FOTLER EDWARDS AIRCRAFT COMPANY	674.8'	99.	PARKING GARAGE	680.1'	106.	JANSON ELECTRIC	
									100.	LIKENSEE		107.	LIKENSEE	
												108.	LA TAYE	



[White Box] TOWN OWNED
 [Light Gray Box] INVESTOR OWNED
 [Dark Gray Box] FUEL FARM
 [Black Box] COMMON TAXI & DRIVEWAYS



ADDISON AIRPORT
ADDISON, TEXAS

AIRPORT LAYOUT PLAN

WISBOS