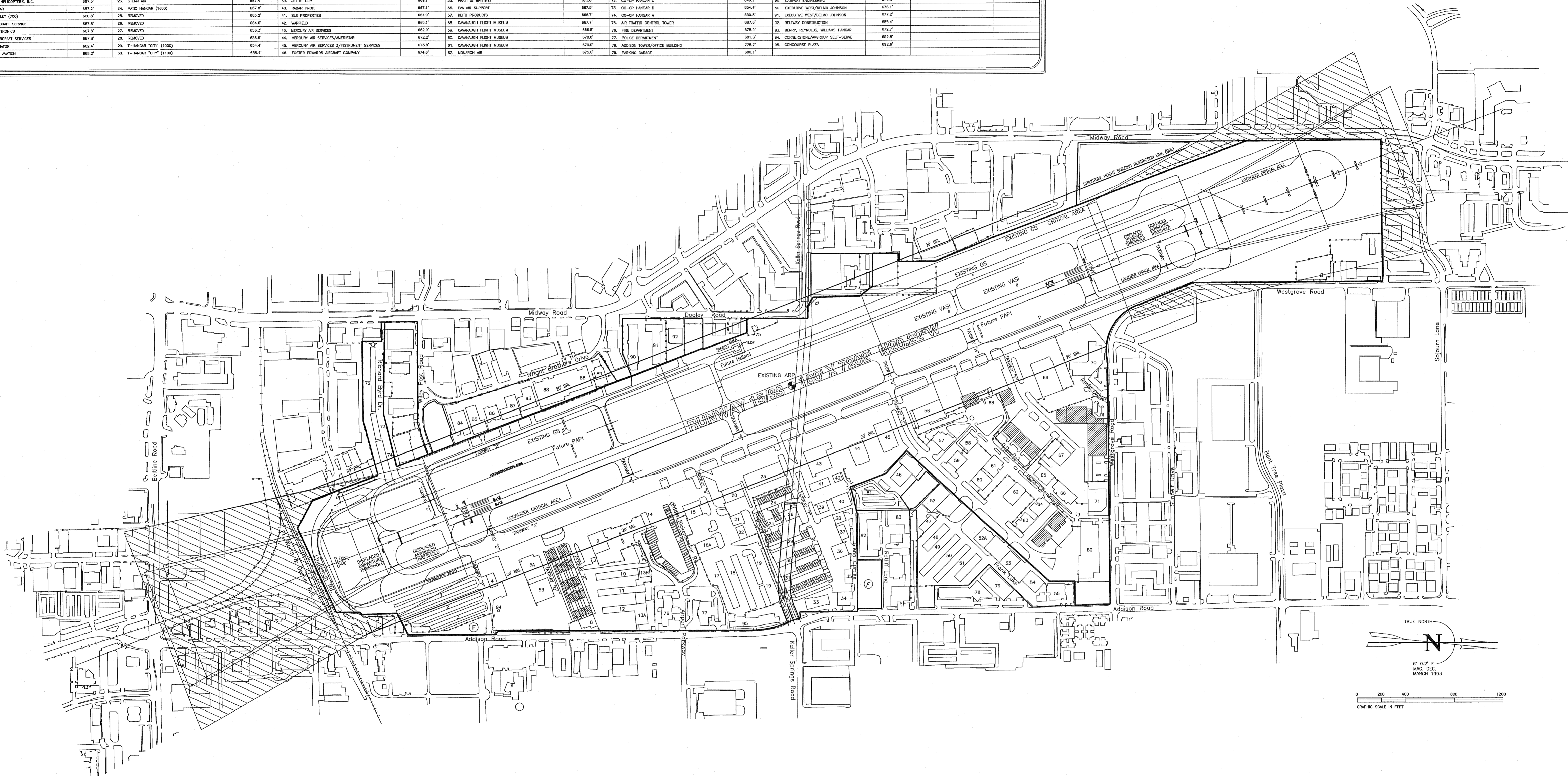


BUILDING LEGEND

#	TENANT OR OWNER	TOP ELEVATION	#	TENANT OR OWNER	TOP ELEVATION	#	TENANT OR OWNER	TOP ELEVATION	#	TENANT OR OWNER	TOP ELEVATION	#	TENANT OR OWNER	TOP ELEVATION	#	TENANT OR OWNER	TOP ELEVATION
1.	T-HANGAR "CITY" (100)	649.2'	16A.	AIRPORT FLYING SCHOOL/OWENS AVIATION	655.2'	47.	CRESCENT REAL ESTATE	667.9'	83.	CHERRY AIR, INC.	672.2'	80.	WESTGROVE AIR PLAZA	683.3'	FE.	Future Executive Hangar	
2.	T-HANGAR "CITY" (400)	648.1'	16B.	PORT-O-PORBS (3)	656.2'	48.	FRENCHLY AVIATION	662.7'	84.	DOYLE HARTMAN	672.2'	81.	ADDISON LOCKER	684.2'	FT.	Future T-Hangar	
3.	T-HANGAR "CITY" (800)	650.9'	17.	PATO HANGAR (1600)	657.8'	49.	FRENCHLY AVIATION	658.4'	85.	METZ INDUSTRIES	672.2'	82.	TED-48 PAVES	653.7'	FL.	Future Large Hangar	
4.	CANON AVIATION SERVICES	650.2'	18.	PATO HANGAR (1400)	657.8'	50.	FRENCHLY AVIATION	658.0'	86.	HEIDEN INDUSTRIES	682.8'	83.	ADDISON CAR CARE CENTER	681.7'			
5A.	SPORTCH AVIATION, INC.	706.9'	19.	T-HANGAR "CITY" (600)	661.7'	51.	AMERICAN FLYERS	665.4'	87.	INTERLIT	678.4'	84.	ARTEX TOOL	664.2'			
5B.	AVIARUP		20.	WALTER FULLER AIRCRAFT SALES/AIRCRAFT WELDING	661.7'	52.	CRESCENT REAL ESTATE	684.9'	88.	ADDISON AIRPORT OF TEXAS INC.	684.4'	85.	HOWARD TWITCHELL	673.9'			
6.	T-HANGAR "CITY" (TO BE REMOVED)	653.4'	21.	WALTER FULLER AIRCRAFT SALES/AIRCRAFT WELDING	668.8'	53.	LENOX HANGAR	663.2'	89.	WILSON AIR/UNITED STATES CUSTOMS OFFICE	678.4'	86.	RECON/KEITH THOMPSON	699.8'			
7.	T-HANGAR "CITY" (TO BE REMOVED)	653.6'	22.	JET 1 & 2 HANGAR	668.2'	54.	CORTER CROWLEY	643.8'	90.	WILSON AIR/ENRICHMENT	671.3'	87.	J & W FOSTER/STEW AVIATION	677.9'			
8.	ONEFLIGHT HELICOPTERS, INC.	667.4'	23.	JET 1 & 2 HANGAR	667.2'	55.	FRENCHLY AVIATION	673.8'	91.	ITALIK	693.7'	88.	ENVIRO INDUSTRIES	677.4'			
9.	ONEFLIGHT HELICOPTERS, INC.	667.9'	24.	STERN AIR	667.4'	56.	PRATT & WHITNEY	669.1'	92.	CO-OP HANGAR C	649.9'	89.	GATWAY ENGINEERING	674.8'			
10.	PATO HANGAR	657.2'	25.	PATO HANGAR (1600)	657.8'	57.	EVA AIR SUPPORT	667.1'	93.	CO-OP HANGAR B	654.4'	90.	EXECUTIVE WEST/DELMO JOHNSON	678.1'			
11.	CHUCK WAGLEY (700)	660.8'	26.	REMOVED	665.2'	58.	SLS PROPERTIES	664.9'	94.	CO-OP HANGAR A	650.8'	91.	EXECUTIVE WEST/DELMO JOHNSON	677.2'			
12.	HENLEY AIRCRAFT SERVICE	667.8'	27.	REMOVED	664.8'	59.	WARFIELD	669.1'	95.	AIR TRAFFIC CONTROL TOWER	667.7'	92.	BELTWAY CONSTRUCTION	685.4'			
13A.	TUBE ELECTRONICS	667.8'	28.	REMOVED	656.7'	60.	MERCURY AIR SERVICES	662.3'	96.	CHANNALUSH FLIGHT MUSEUM	660.2'	93.	HERRY, REYNOLDS, WILLIAMS HANGAR	672.7'			
13B.	HENLEY AIRCRAFT SERVICES	667.8'	29.	REMOVED	672.2'	61.	MERCURY AIR SERVICES/AMERSTAR	656.9'	97.	CHANNALUSH FLIGHT MUSEUM	670.0'	94.	CORNERSTONE/WISDOM SELF-SERVE	653.8'			
14.	ABE BEN AVIATOR	662.4'	30.	T-HANGAR "CITY" (1000)	654.4'	62.	MERCURY AIR SERVICES 3/AIRCRAFT SERVICES	675.9'	98.	CHANNALUSH FLIGHT MUSEUM	670.0'	95.	CONCOURSE PLAZA	692.8'			
15.	CENTERLINE AVIATION	669.2'	31.	T-HANGAR "CITY" (1100)	658.4'	63.	FOSTER EDWARDS AIRCRAFT COMPANY	674.6'	99.	MONARCH AIR	675.6'	96.	PARKING GARAGE	680.1'			



ADDISON AIRPORT
ADDISON, TEXAS

AIRPORT LAYOUT PLAN

ADDISON AIRPORT PLAN (PARCELS)