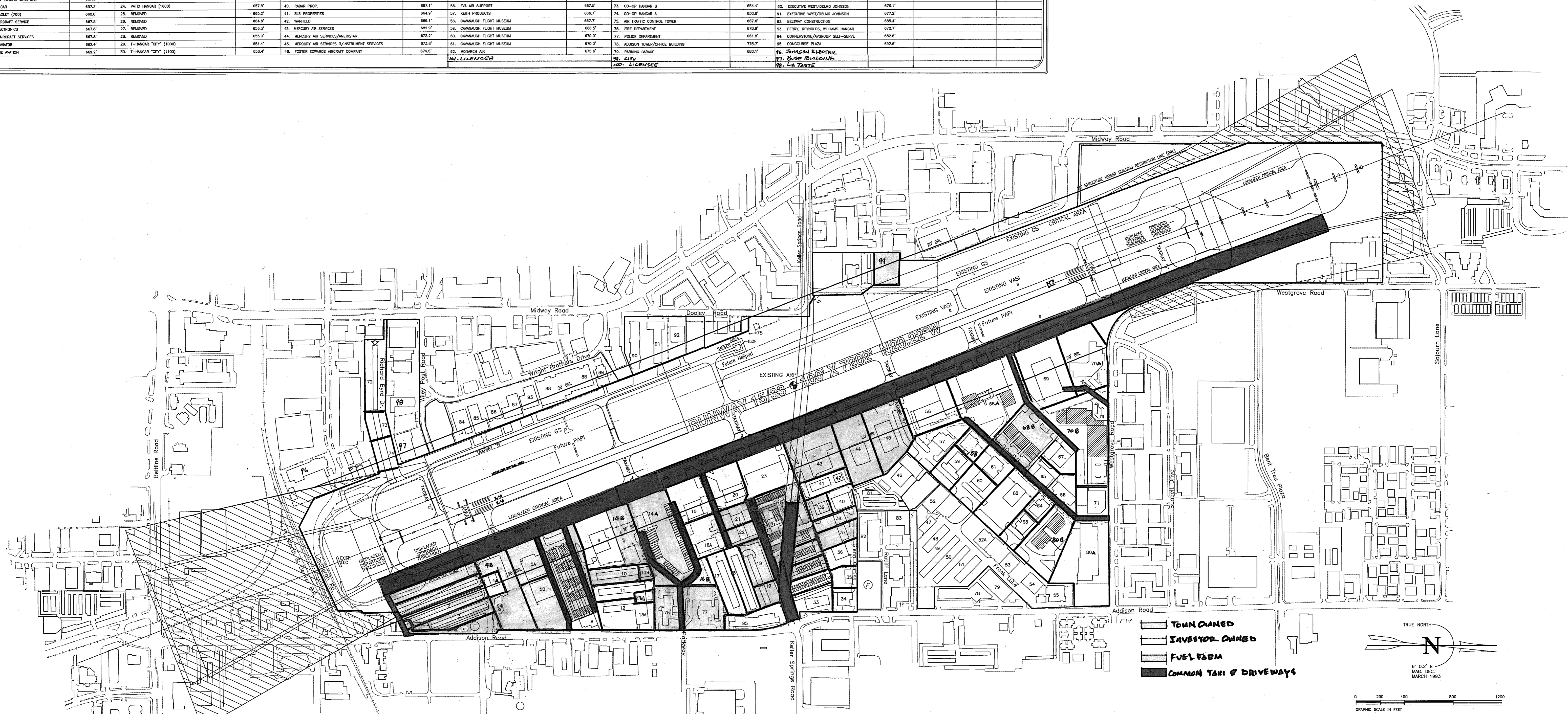
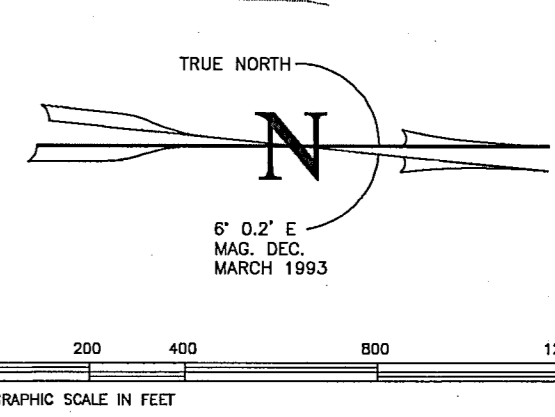


BUILDING LEGEND

#	TENANT OR OWNER	TOP ELEVATION	#	TENANT OR OWNER	TOP ELEVATION	#	TENANT OR OWNER	TOP ELEVATION	#	TENANT OR OWNER	TOP ELEVATION	#	TENANT OR OWNER	TOP ELEVATION
1.	T-HANGAR "CITY" (300)	649.2'	16A.	AIRPORT FLYING SCHOOL/OWNERS AVIATION	655.2'	47.	CRESCENT REAL ESTATE	667.2'	83.	CHERRY AVE. INC.	672.2'	89.	WESTGROVE AIR PLAZA	683.3'
2.	T-HANGAR "CITY" (600)	648.1'	16B.	PORT-O-PORTS (3)	656.2'	51.	PARO HANGAR (1200)	660.2'	84.	DOYLE WATMAN	672.2'	91.	ADDISON LOCKER	684.2'
3.	T-HANGAR "CITY" (300)	650.2'	17.	PARO HANGAR (1600)	657.2'	32.	HEZ & HINES (1200)	658.2'	85.	METZ WAGNER	672.2'	92.	33-AIR PARTS	685.2'
4.	CRASH AVIATION SERVICES	659.5'	18.	PARO HANGAR (1400)	657.2'	33.	FLAPS/LONG SHOTS/EMTZ	665.2'	86.	HEMEN INDUSTRIES	682.2'	93.	ADDISON CAR CARE CENTER	681.2'
5A.	SKYTECH AVIATION, INC.	708.9'	19.	T-HANGAR "CITY" (600)	661.2'	34.	AMERICAN FLYERS	663.2'	87.	INTERJET	678.4'	94.	ARTIC TOOL	654.2'
5B.	AVIAGROUP	708.9'	20.	WALTER FULLER AIRCRAFT SALES/AIRCRAFT WELDING & SHEET METAL CO./ORIBUS AVIATION/DYNAMIC AVIATION	668.2'	35.	TOY BOX	663.9'	88.	ADDISON AIRPORT OF TEXAS INC.	684.4'	95.	HOWARD MITCHELL	673.9'
6.	T-HANGAR "CITY" (TO BE REMOVED)	653.4'	21.	JET TO HANGAR	666.2'	36.	LENDIX HANGAR	663.2'	89.	MILLON AIR/UNITED STATES CUSTOMS OFFICE	678.4'	96.	HEIDEN/KATH THOMPSON	666.8'
7.	T-HANGAR "CITY" (TO BE REMOVED)	653.3'	22.	JET 1 & 2 HANGAR	667.2'	37.	NORTH TEXAS AIRCRAFT SERVICES, INC.	663.2'	90.	MILLON AIR/HIGHWATER	671.2'	97.	J. & W/FUTUREWAY AVIATION	677.2'
8.	ONEFLIGHT HELICOPTERS, INC.	667.4'	23.	STERN AIR	667.4'	38.	AR-O SPECIALISTS	672.8'	91.	ITALY	683.2'	98.	EDWARD INDUSTRIES	677.8'
9.	ONEFLIGHT HELICOPTERS, INC.	667.5'	24.	PARO HANGAR	657.2'	39.	JET II "CITY"	667.1'	92.	CO-OP HANGAR C	649.9'	99.	GATEWAY ENGINEERING	674.8'
10.	PARO HANGAR	657.2'	25.	REMOVED	662.8'	40.	BACAR PROP.	667.1'	93.	CO-OP HANGAR B	654.4'	100.	EXECUTIVE WEST/DELMO JOHNSON	676.1'
11.	CHUCK WAGLEY (700)	660.8'	26.	REMOVED	662.8'	41.	SLS PROPERTIES	664.9'	94.	CO-OP HANGAR A	650.8'	101.	EXECUTIVE WEST/DELMO JOHNSON	677.2'
12.	HENLEY AIRCRAFT SERVICE	667.8'	27.	REMOVED	664.8'	42.	INWFIELD	669.1'	95.	AIR TRAFFIC CONTROL TOWER	697.8'	102.	BELTWAY CONSTRUCTION	695.4'
13A.	FIVE ELECTRONICS	667.8'	28.	REMOVED	665.2'	43.	WINDOLBY AIR SERVICES	665.2'	96.	FIRE DEPARTMENT	678.8'	103.	BERRY REYNOLDS WILKINS HANGAR	672.2'
13B.	HENLEY AIRCRAFT SERVICE	667.8'	29.	T-HANGAR "CITY" (1000)	664.4'	44.	WINDOLBY AIR SERVICES/AMERSTAR	672.2'	97.	POLICE DEPARTMENT	681.8'	104.	CORNERSTONE/ANGROUP SELF-SERVE	658.8'
14.	AN BEN AVIATOR	668.4'	30.	T-HANGAR "CITY" (1000)	664.4'	45.	WINDOLBY AIR SERVICES 3/INSTRUMENT SERVICES	673.8'	98.	ADDISON TOWER/OFFICE BUILDING	778.2'	105.	CONCOURSE PLAZA	692.6'
15.	CENTERLINE AVIATION	668.2'	31.	T-HANGAR "CITY" (1100)	668.4'	46.	FOTLER EDWARDS AIRCRAFT COMPANY	674.8'	99.	PARKING GARAGE	680.1'	106.	JANSON ELECTRIC	
									100.	CITY		107.	BUSE BUILDING	
												108.	LA TASTE	



———— TOWN OWNED
 ———— INVESTOR OWNED
 ———— FUEL TANK
 ———— COMMON TAXI & DRIVEWAYS



ADDISON AIRPORT
ADDISON, TEXAS

AIRPORT LAYOUT PLAN

WISBOS