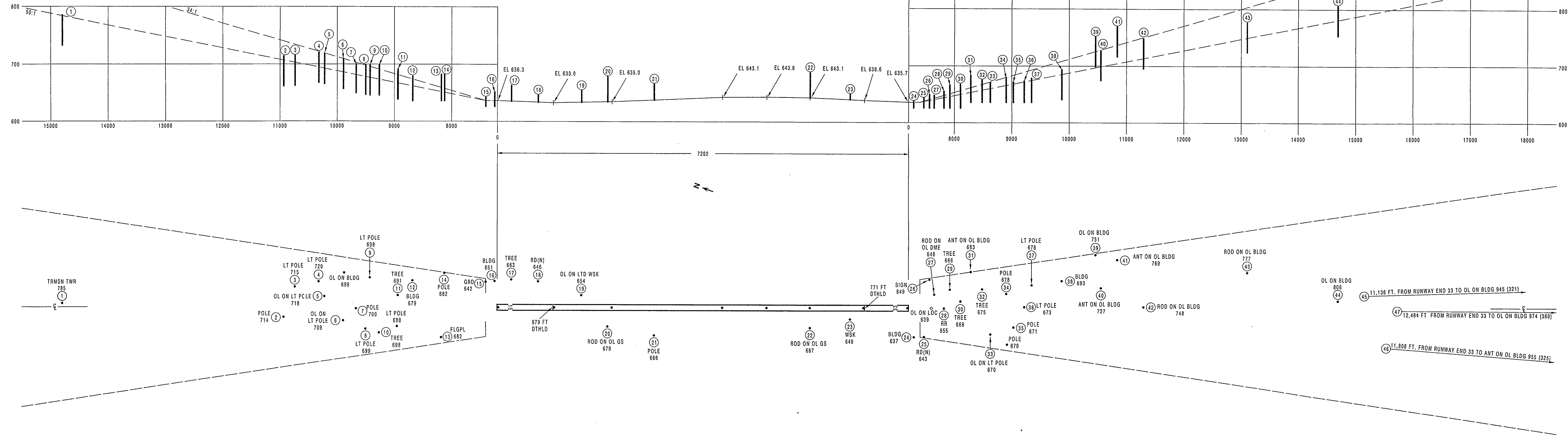


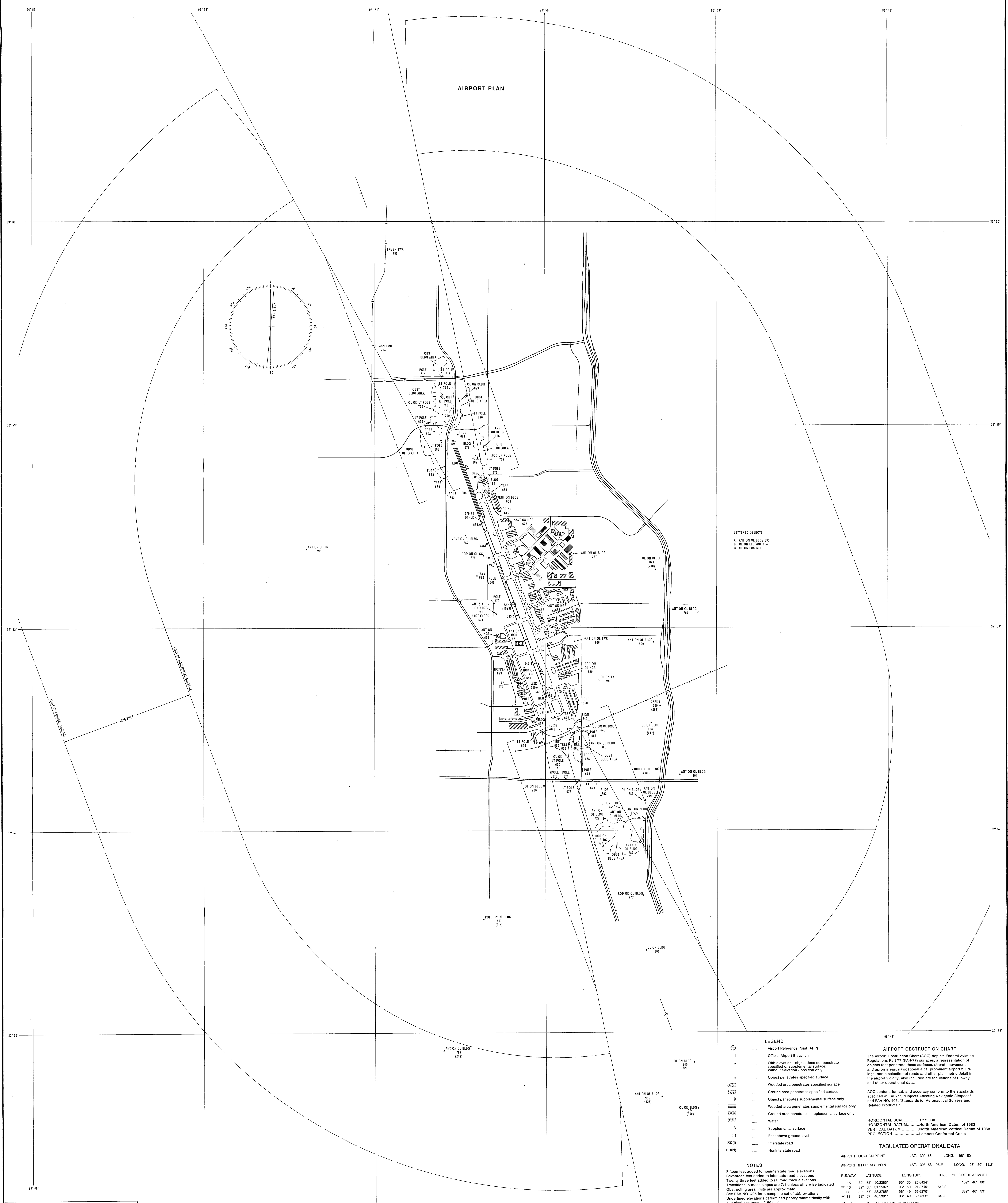


RUNWAY PLANS AND PROFILES

PAPER SCALE
HORIZONTAL 1 INCH EQUALS 1000 FEET
VERTICAL 1 INCH EQUALS 100 FEET



AIRPORT PLAN



LEGEND

- ⊕ Airport Reference Point (ARP)
- Critical Airport Elevation
- With elevation - object does not penetrate specified or supplemental surface; Without elevation - position only
- Object penetrates specified surface
- ⊘ Wooded area penetrates specified surface
- ⊘ Ground area penetrates specified surface
- ⊘ Object penetrates supplemental surface only
- ⊘ Wooded area penetrates supplemental surface only
- ⊘ Ground area penetrates supplemental surface only
- ~ Water
- ~ Supplemental surface
- () Feet above ground level
- RD() Interstate road
- RD(N) Noninterstate road

AIRPORT OBSTRUCTION CHART
The Airport Obstruction Chart (AOC) depicts Federal Aviation Regulations Part 77 (FAR 77) surfaces, a representation of objects that penetrate those surfaces, terrain, obstructions, and apron areas, navigational aids, prominent airport buildings, and a selection of roads and other geographic detail in the airport vicinity, also included are tabulations of runway and other operational data.

AOC content, format, and accuracy conform to the standards specified in FAR 77, "Obstacles Affecting Navigable Airspace" and FAR 105.405, "Standards for Aeronautical Surveys and Related Products."

HORIZONTAL SCALE 1:10,000
HORIZONTAL DATUM North American Datum of 1983
VERTICAL DATUM North American Vertical Datum of 1988
PROJECTION Lambert Conformal Conic

TABULATED OPERATIONAL DATA

AIRPORT LOCATION POINT	LAT.	LONG.	ELEV.
ADDISON AIRPORT	32° 56' 00.0"	96° 50' 50.0"	643.8

NOTES
Elevations are in feet unless otherwise indicated.
Obstructions are shown to the maximum extent shown on the chart.
Obstructions are shown to the maximum extent shown on the chart.
Obstructions are shown to the maximum extent shown on the chart.

AMENDMENT DATA

NO.	DATE	DESCRIPTION

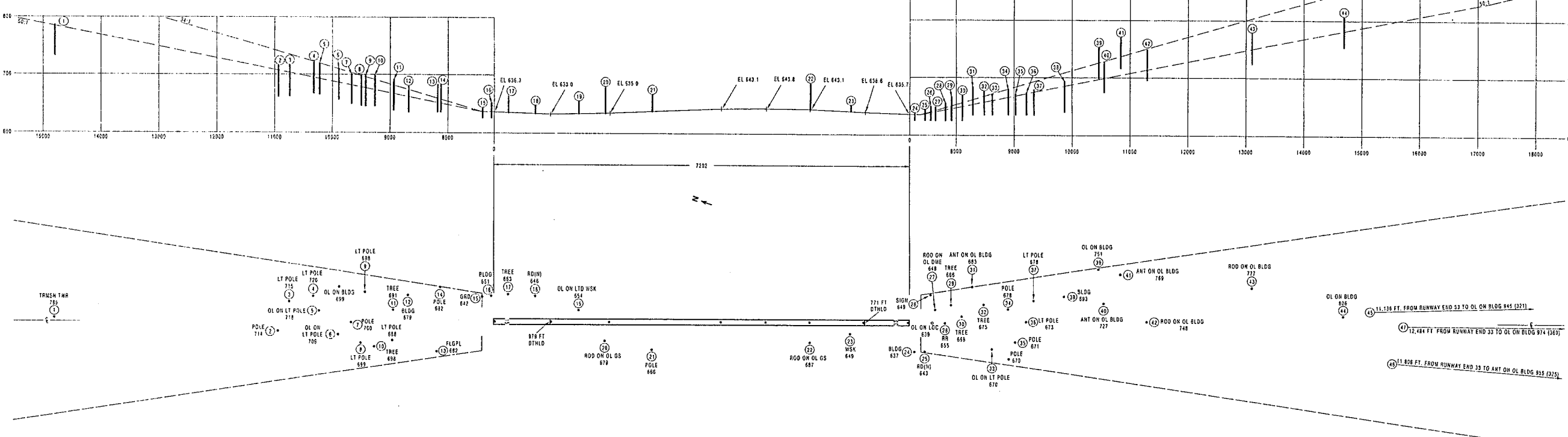
DIMENSIONS AND ELEVATIONS ARE IN FEET

AIRPORT ELEVATION 643.8 FEET

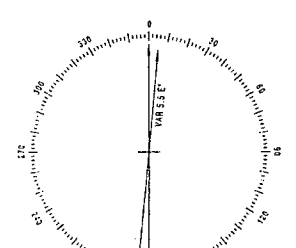
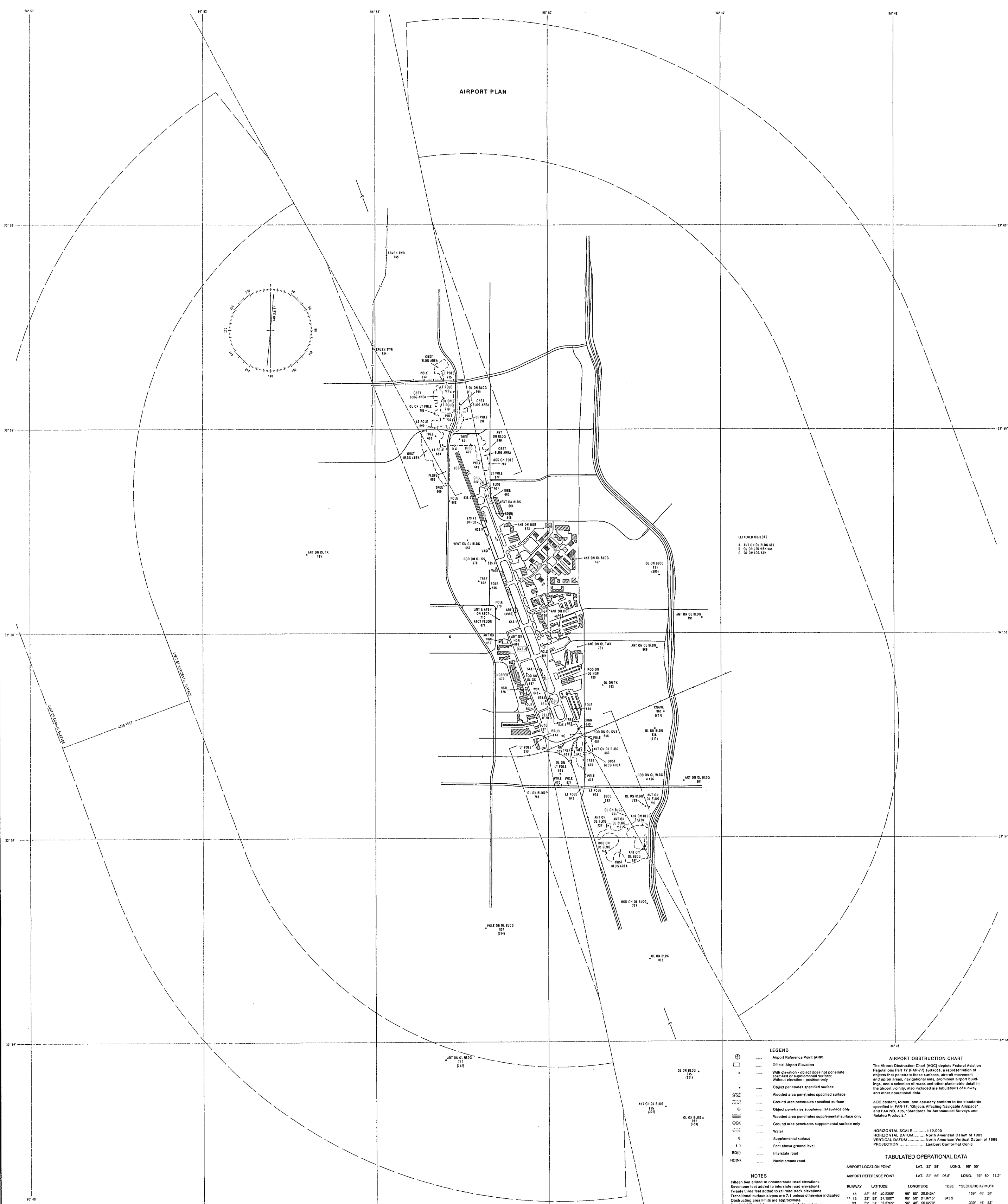


RUNWAY PLANS AND PROFILES

PROFILE SCALE
HORIZONTAL: 1 INCH EQUALS 100 FEET
VERTICAL: 1 INCH EQUALS 100 FEET



AIRPORT PLAN



LETTERED OBJECTS
A. ANT ON OL BLDG 800
B. OL ON BLDG 800
C. OL ON BLDG 800

LEGEND

- ⊕ Airport Reference Point (ARP)
- Official Airport Elevation
- With elevation - object does not penetrate specified or supplemental surface. Without elevation - position only.
- Object penetrates specified surface.
- ⊞ Ground area penetrates specified surface.
- ⊞ Object penetrates supplemental surface only.
- ⊞ Wooded area penetrates supplemental surface only.
- ⊞ Ground area penetrates supplemental surface only.
- ⊞ Water.
- ⊞ Supplemental surface.
- ⊞ Feet above ground level.
- ⊞ Interstate road.
- ⊞ Noninterstate road.

AIRPORT OBSTRUCTION CHART

The Airport Obstruction Chart (AOC) depicts Federal Aviation Regulations Part 77 (FAR 77) surfaces, a representation of objects that penetrate these surfaces, aircraft movement and apron areas, navigational aids, prominent airport buildings, and a selection of trees and other obstructions in the airport vicinity. Also included are substitutions of runway and other operational data.

AOC content, format, and accuracy conform to the standards specified in FAR 77, "Objects Affecting Navigable Airspace" and FAA NO. 405, "Standards for Aeronautical Surveys and Related Products."

HORIZONTAL SCALE: 1:12,000
HORIZONTAL DATUM: North American Datum of 1983
VERTICAL DATUM: North American Vertical Datum of 1988
PROJECTION: Lambert Conformal Conic

TABULATED OPERATIONAL DATA

AMPHIBIOUS POINT	LAT.	LONG.	SOI
AMPHIBIOUS POINT	LAT. 32° 58' 06.4"	LONG. 96° 50' 11.2"	
AMPHIBIOUS POINT	LAT. 32° 58' 06.4"	LONG. 96° 50' 11.2"	

NOTES
Filices feet added to noninterstate road elevations
Ground area not added to interstate road elevations
Twenty three feet added to railroad track elevations
Transition surface slopes are 7:1 unless otherwise indicated
Obstruction area limits are approximate
See FAA NO. 405 for a complete set of abbreviations
Unlighted elevations determined photogrammetrically with a vertical accuracy +/- 40 feet

AMENDMENT DATA

AMENDMENT	DATE	DESCRIPTION

DIMENSIONS AND ELEVATIONS ARE IN FEET

See WEBSITE - <http://www.ngs.noaa.gov> for "CORRECTIONS and DATES OF LATEST EDITIONS" PUBLISHED CHARTS are available through NOAA Distribution (NOCDS), National Ocean Service, Silverdale, MD 20777. Telephone: (301) 438-6978

Surveyed and compiled by the National Ocean Service (NOS), U.S. Department of Commerce in accordance with specifications and standards of accuracy of the Federal Aviation Administration, Department of Transportation and NOS.

Published at Washington, D.C. U.S. Department of Commerce National Oceanic and Atmospheric Administration National Ocean Service

* Airport Obstruction Chart data is available on the Internet at the Universal Data Gateway Format at <http://www.ngs.noaa.gov/>

ADDISON AIRPORT, DALLAS, TEXAS